

Gigue

J. S. Bach (1685–1750)

French Suite no. 5 in G major, BWV 816

1 = 60

12
16

3

5

7

The image displays a musical score for a Gigue, identified as French Suite no. 5 in G major, BWV 816 by J.S. Bach. The score is presented in four systems, each consisting of a treble and bass staff. The first system includes a tempo marking of 1 = 60 and a time signature of 12/16. The second system is marked with a '3' above the first measure. The third system is marked with a '5' above the first measure. The fourth system is marked with a '7' above the first measure. The music is written in G major and 3/4 time. The notation includes various note values, including eighth and sixteenth notes, and rests. The bass staff is mostly empty, with a few notes in the fourth system.

9

11

13

15

17

19

21

23

25

27

29

31

33

The image displays a musical score for a piano piece, spanning measures 25 to 33. The score is written for piano (p) and features a treble and bass staff. The key signature is one flat (B-flat). The tempo is marked 'Cigue'. The score includes various musical notations such as eighth notes, sixteenth notes, and rests. The first system (measures 25-26) shows a treble staff with a whole rest and a bass staff with eighth notes. The second system (measures 27-28) shows a treble staff with eighth notes and a bass staff with eighth notes. The third system (measures 29-30) shows a treble staff with eighth notes and a bass staff with eighth notes. The fourth system (measures 31-32) shows a treble staff with eighth notes and a bass staff with eighth notes. The fifth system (measures 33-34) shows a treble staff with eighth notes and a bass staff with eighth notes. The score is color-coded with red, blue, and orange notes and stems.

35

Measures 35-36. Treble clef: green and red notes. Bass clef: blue notes. Measure 35 ends with a repeat sign. Measure 36 has a repeat sign at the beginning.

37

Measures 37-38. Treble clef: green and red notes. Bass clef: blue notes. Measure 37 ends with a repeat sign. Measure 38 has a repeat sign at the beginning.

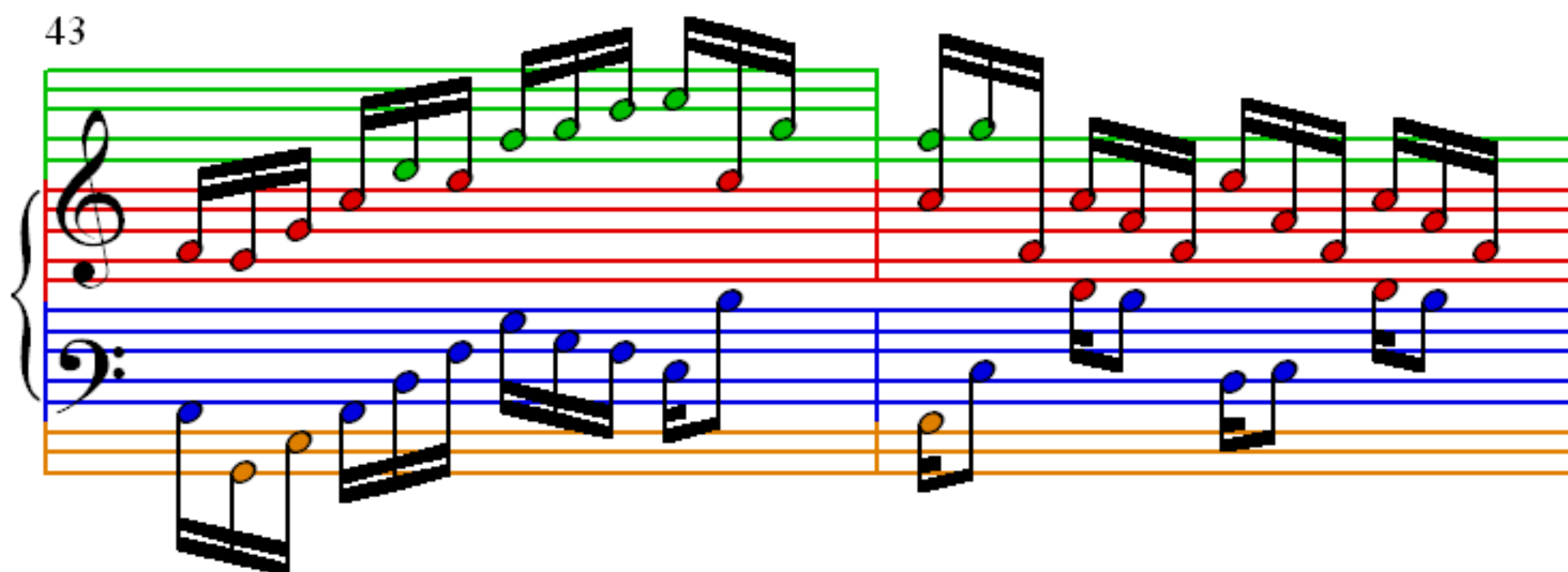
39

Measures 39-40. Treble clef: green and red notes. Bass clef: blue notes. Measure 39 ends with a repeat sign. Measure 40 has a repeat sign at the beginning.

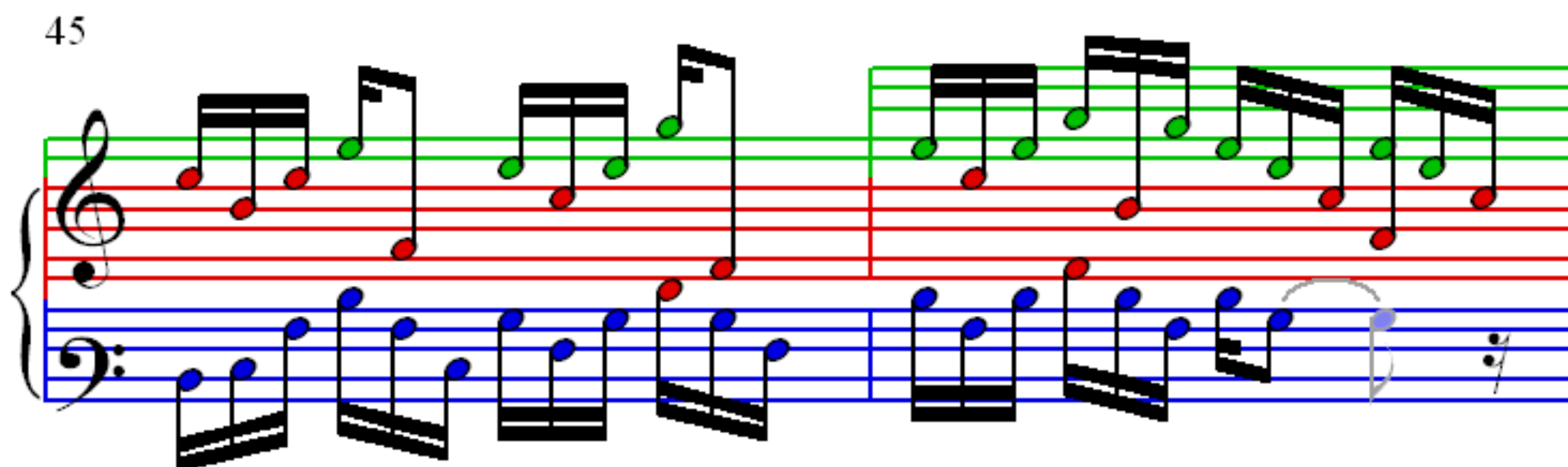
41

Measures 41-42. Treble clef: green and red notes. Bass clef: blue notes. Measure 41 ends with a repeat sign. Measure 42 has a repeat sign at the beginning.

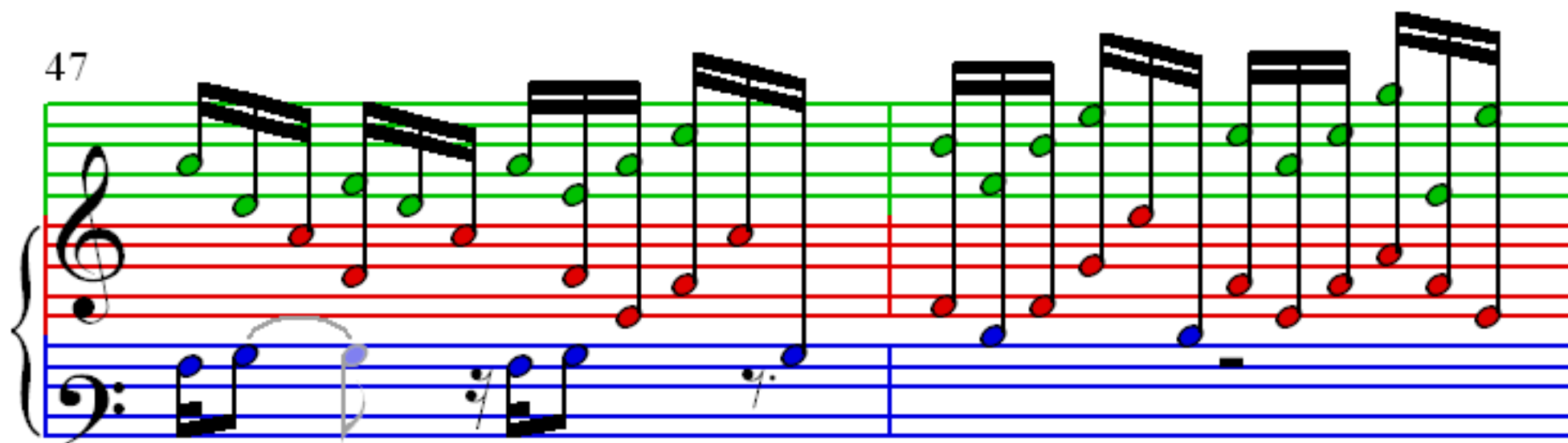
43



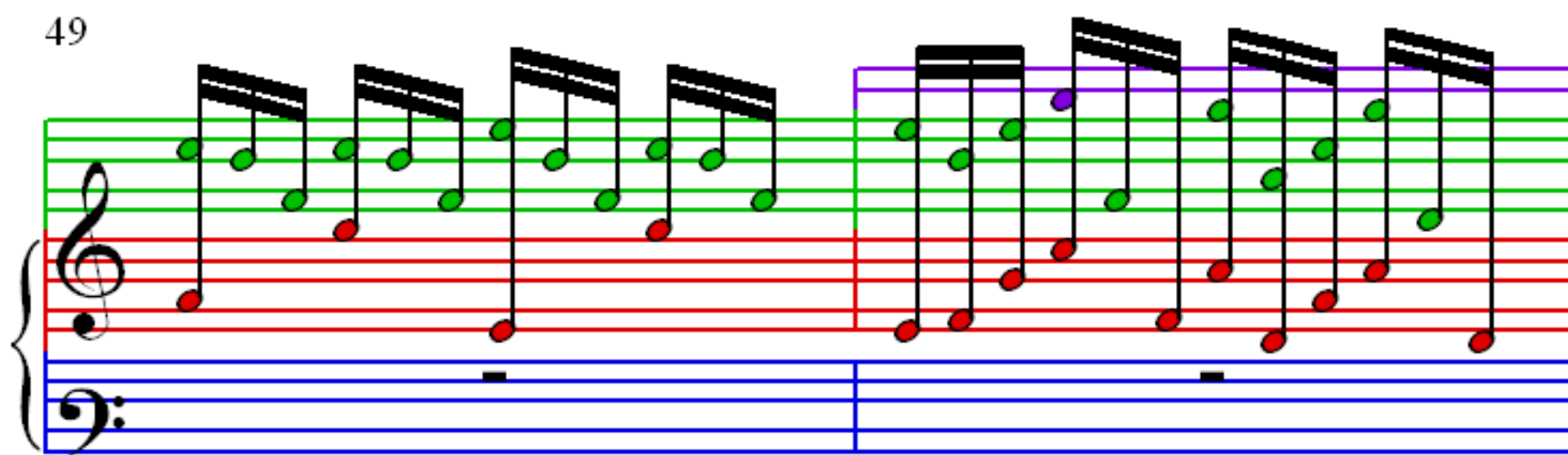
45



47



49



51

Measures 51 and 52 of a musical score. Measure 51 features a treble clef staff with a series of eighth notes (green and red) and a bass clef staff with a single blue note. Measure 52 continues the treble staff with eighth notes and adds a bass clef staff with a sequence of blue and orange notes. A third, empty orange staff is positioned below the bass staff.

53

Measures 53 and 54 of a musical score. Measure 53 shows the treble staff with eighth notes and the bass staff with a sequence of orange and blue notes. Measure 54 continues both staves with similar note patterns. A third, empty orange staff is positioned below the bass staff.

55

Measures 55 and 56 of a musical score. Measure 55 features the treble staff with eighth notes and the bass staff with a sequence of blue and orange notes. Measure 56 continues both staves with similar note patterns. A third, empty orange staff is positioned below the bass staff.