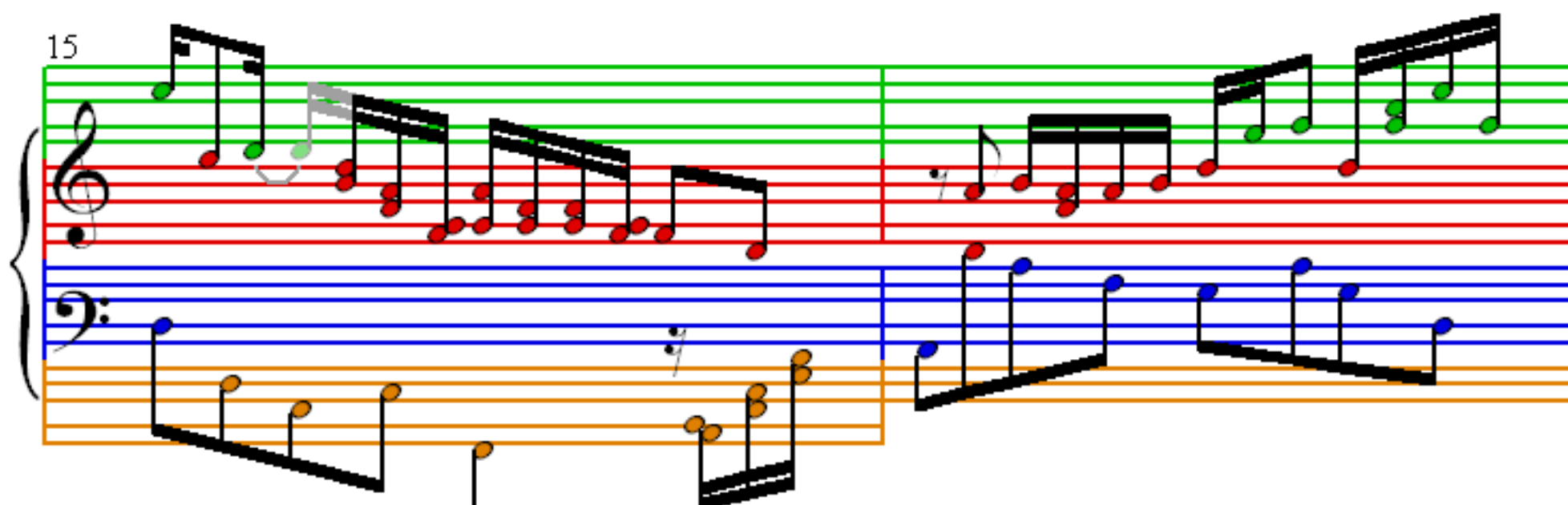
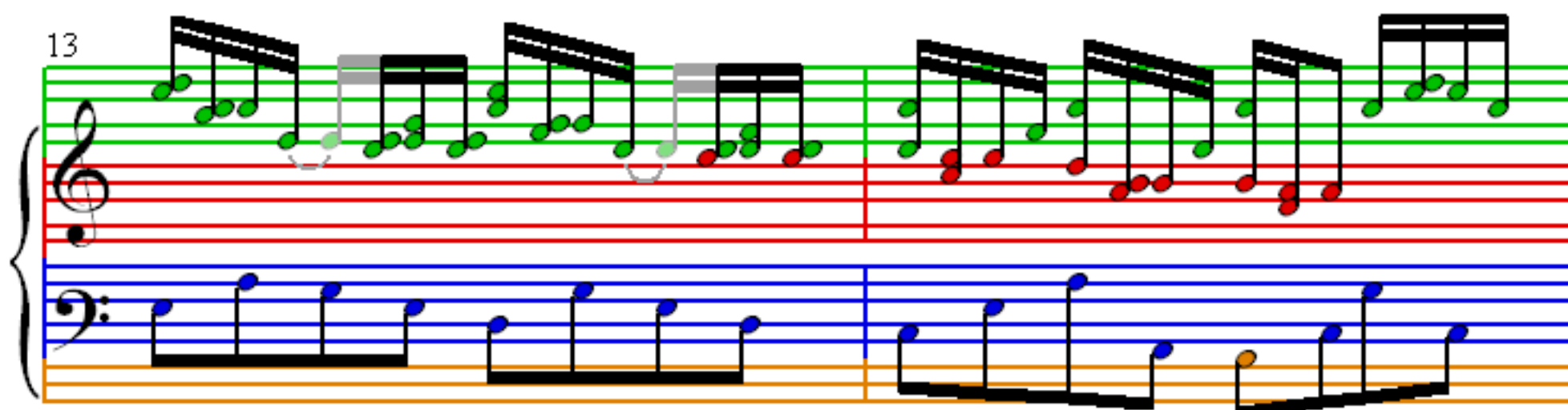
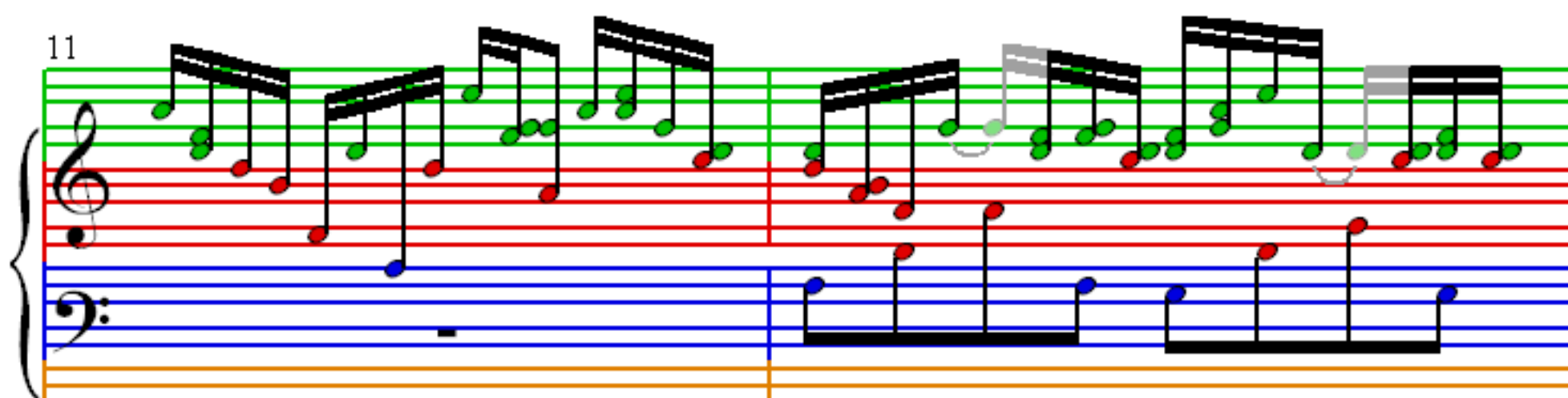
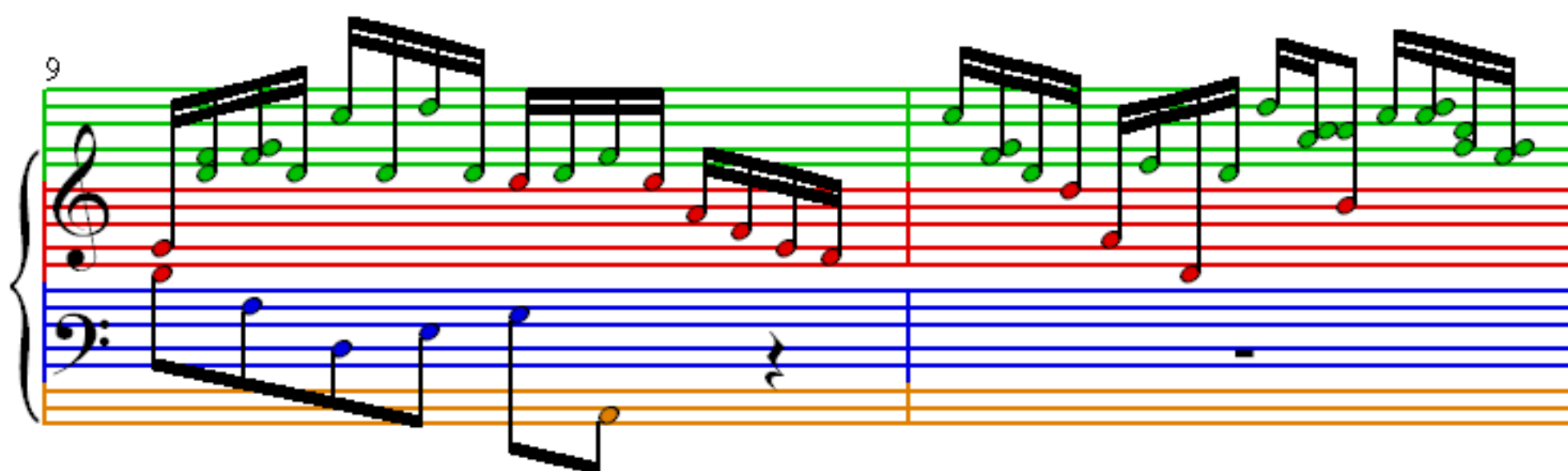


# 6 Partitas, Clavierübung part I, no.2

J. S. Bach (1685–1750) BWV 826

The image displays the first system of a musical score for the 6 Partitas, Clavierübung part I, no. 2 by J.S. Bach. The system consists of four staves, each with a grand staff (treble and bass clef) and a single bass staff. The tempo is marked as 1 = 107. The key signature is one flat (B-flat). The first staff (treble) contains a melodic line with eighth and sixteenth notes, including slurs and ties. The second staff (bass) contains a bass line with eighth and sixteenth notes, including slurs and ties. The third staff (treble) contains a melodic line with eighth and sixteenth notes, including slurs and ties. The fourth staff (bass) contains a bass line with eighth and sixteenth notes, including slurs and ties. The system is divided into two measures by a bar line.



17

19

21

23

25

27

29

31

33

This system contains measures 33 and 34. The treble clef staff features a melodic line with a slur over measures 33 and 34, and a repeat sign at the end of measure 34. The bass clef staff provides a harmonic accompaniment. The staves are color-coded: green for the treble staff, red for the first bass staff, blue for the second bass staff, and orange for the third bass staff.

35

This system contains measures 35 and 36. The treble clef staff continues the melodic line with a slur over measures 35 and 36, and a repeat sign at the end of measure 36. The bass clef staff provides a harmonic accompaniment. The staves are color-coded: green for the treble staff, red for the first bass staff, blue for the second bass staff, and orange for the third bass staff.

37

This system contains measures 37 and 38. The treble clef staff continues the melodic line with a slur over measures 37 and 38, and a repeat sign at the end of measure 38. The bass clef staff provides a harmonic accompaniment. The staves are color-coded: green for the treble staff, red for the first bass staff, blue for the second bass staff, and orange for the third bass staff.

39

This system contains measures 39 and 40. The treble clef staff continues the melodic line with a slur over measures 39 and 40, and a repeat sign at the end of measure 40. The bass clef staff provides a harmonic accompaniment. The staves are color-coded: green for the treble staff, red for the first bass staff, blue for the second bass staff, and orange for the third bass staff.

41

Measures 41 and 42. Measure 41 features a treble staff with a series of eighth-note chords and a bass staff with a descending eighth-note line. Measure 42 continues the treble staff's pattern and introduces a half-note chord in the bass staff.

43

Measures 43 and 44. Measure 43 shows a treble staff with eighth-note chords and a bass staff with a half-note chord. Measure 44 continues the treble staff's pattern and introduces a half-note chord in the bass staff.

45

Measures 45 and 46. Measure 45 features a treble staff with eighth-note chords and a bass staff with a descending eighth-note line. Measure 46 continues the treble staff's pattern and introduces a half-note chord in the bass staff.

47

Measures 47 and 48. Measure 47 shows a treble staff with eighth-note chords and a bass staff with a half-note chord. Measure 48 continues the treble staff's pattern and introduces a half-note chord in the bass staff.

49

51

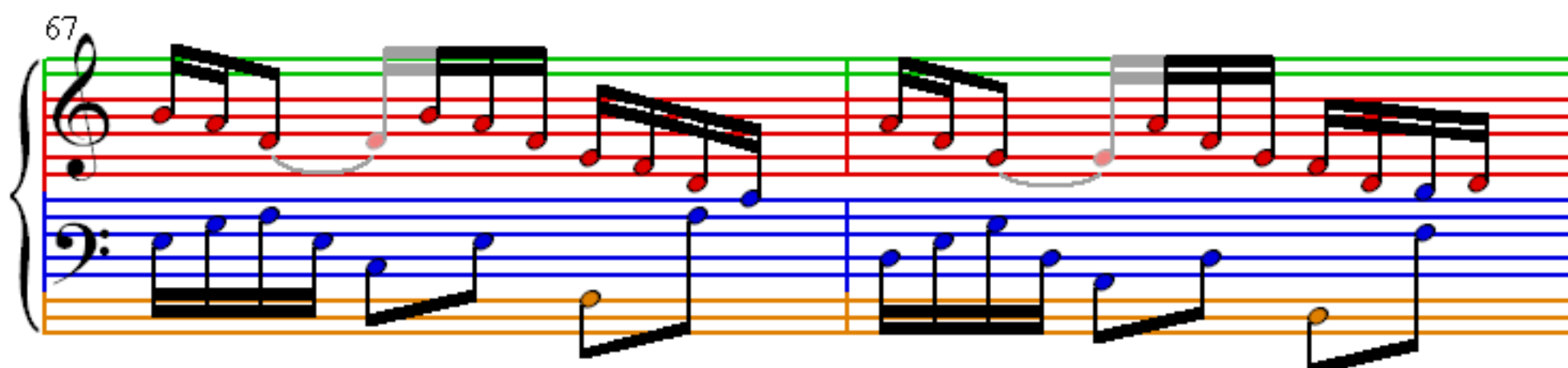
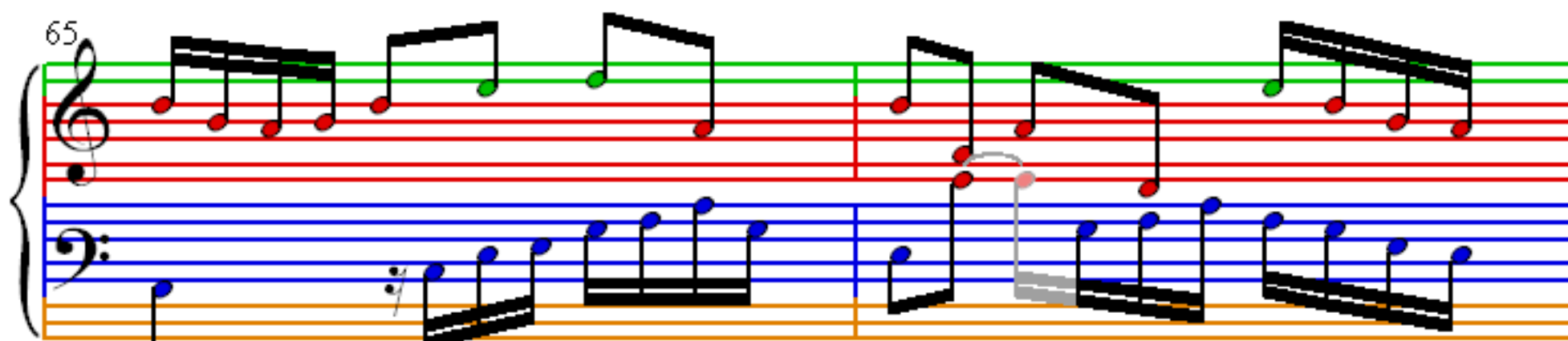
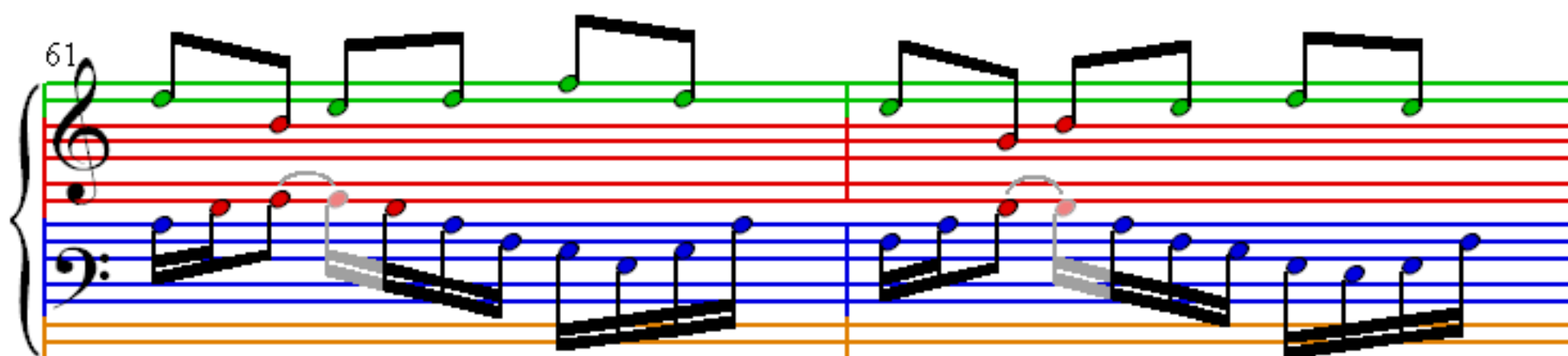
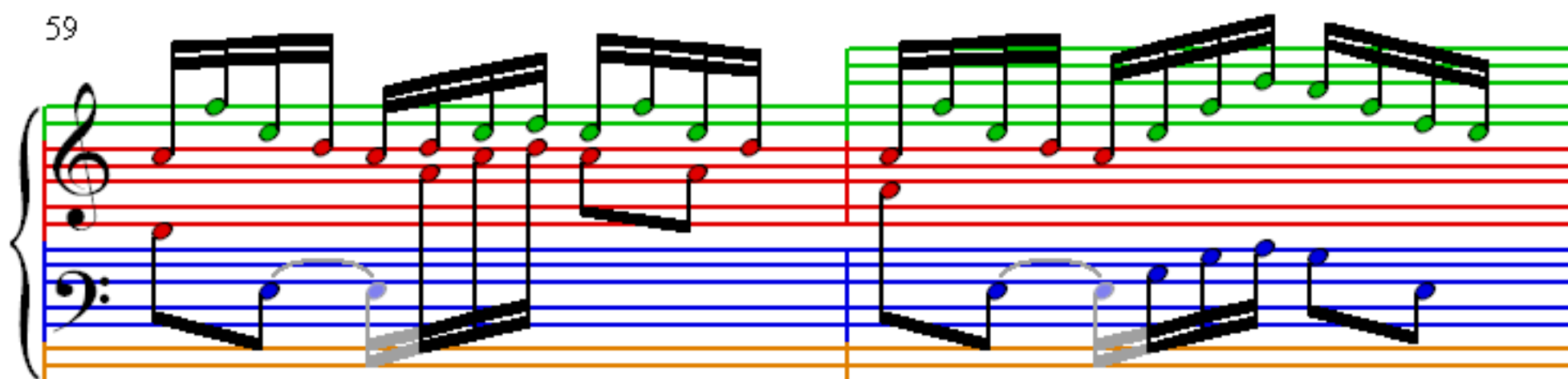
53

55

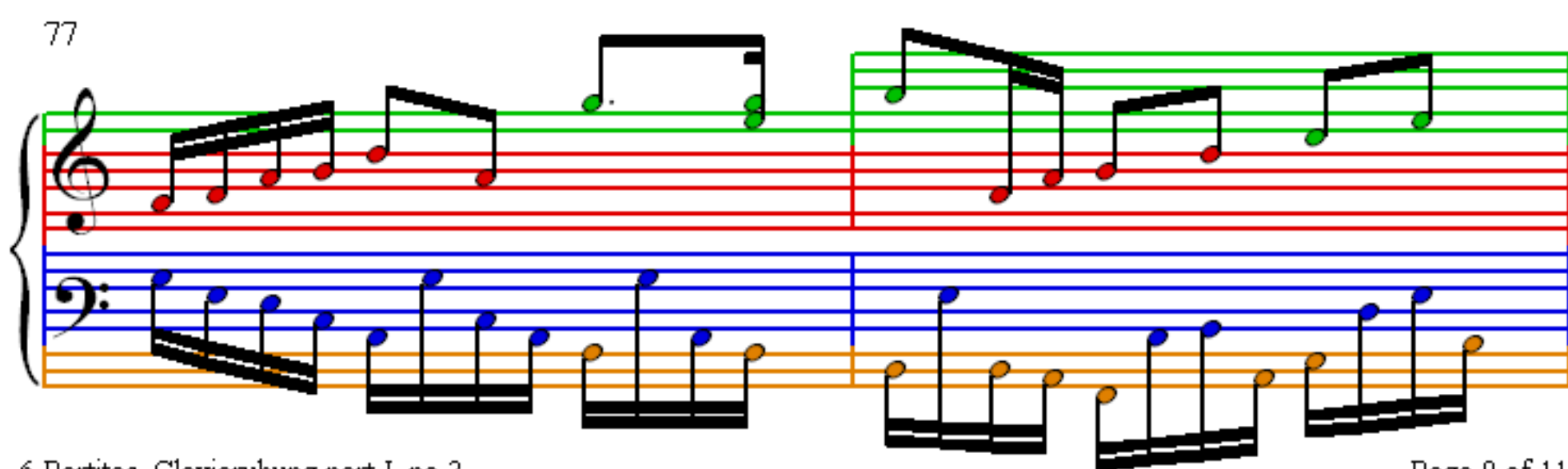
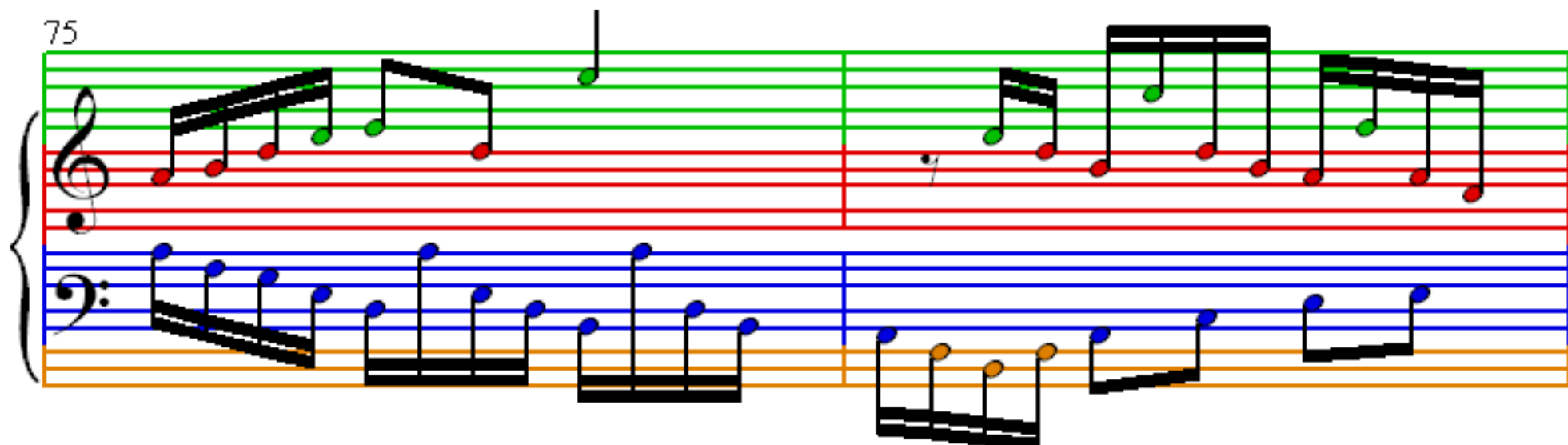
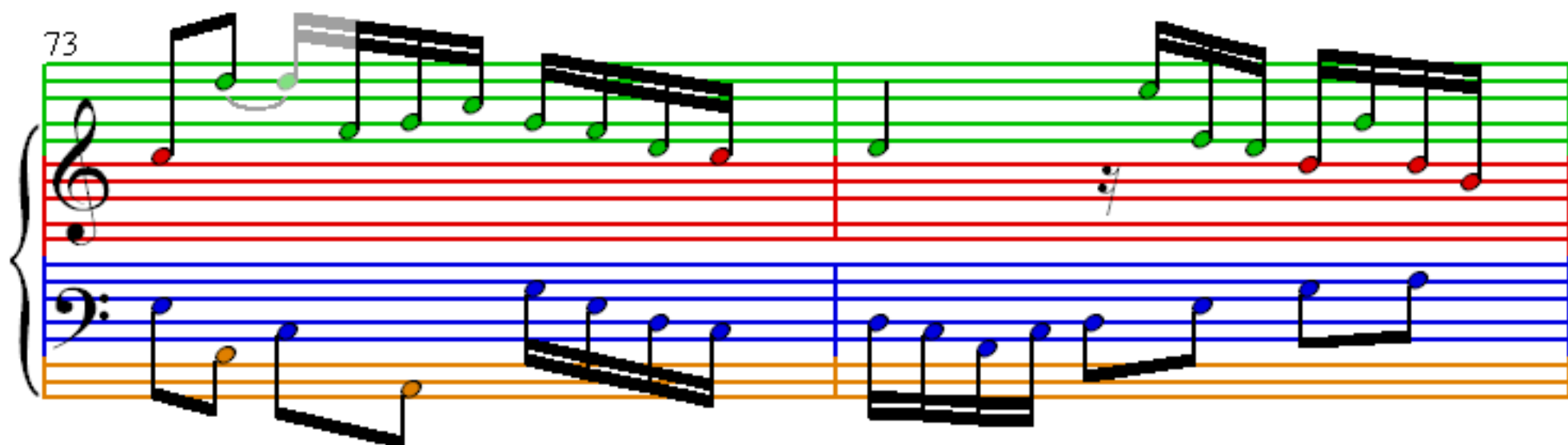
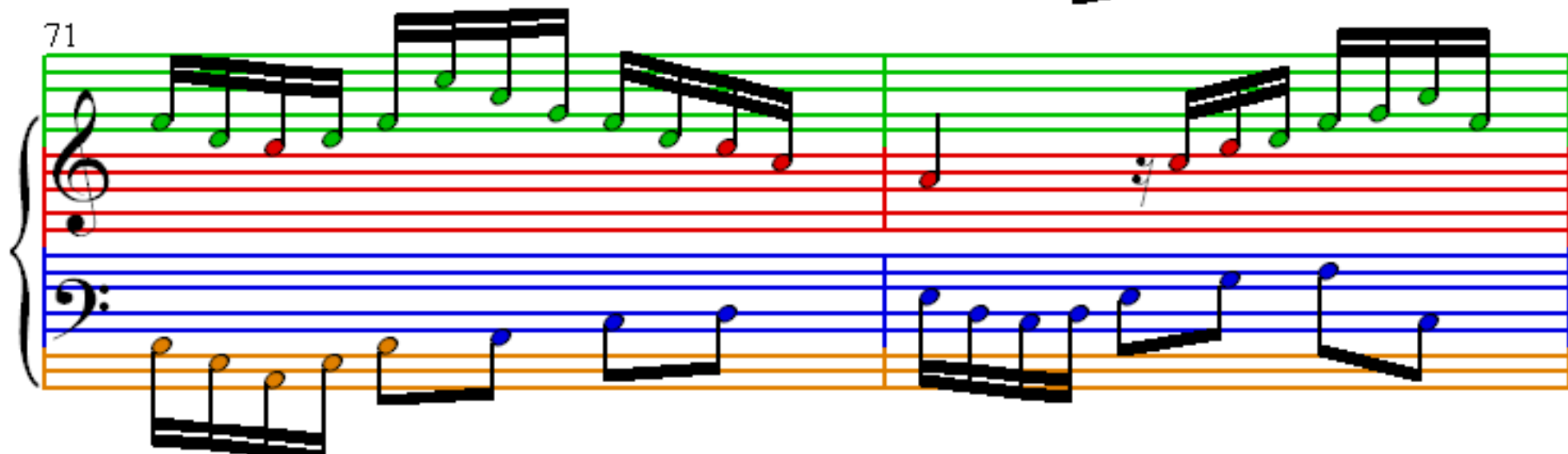
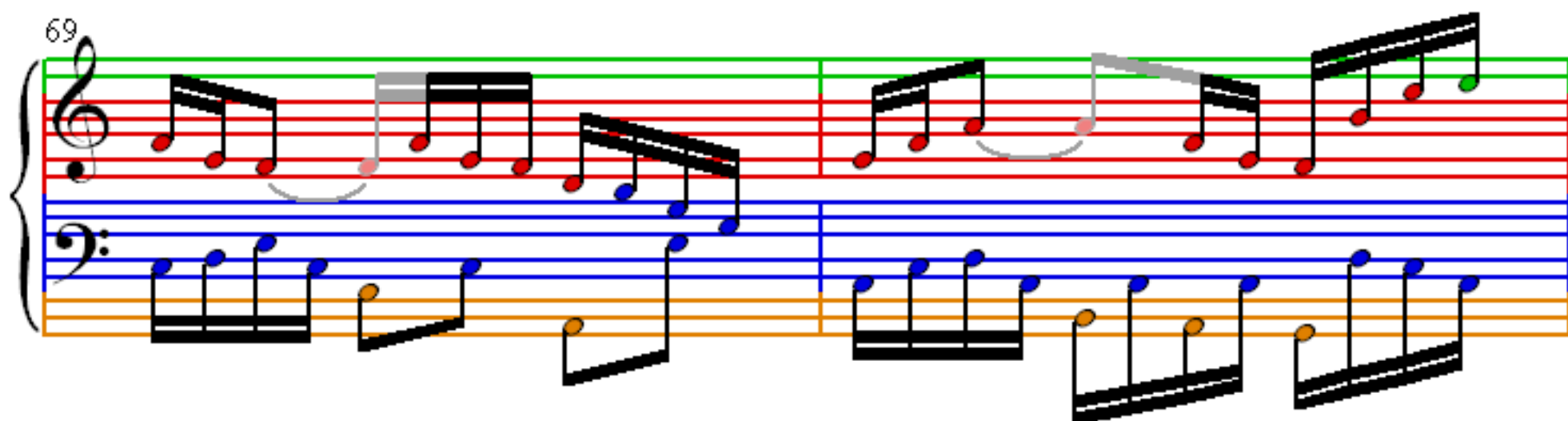
57

This image displays a musical score for a piece from the Notebook for Anna Bach, specifically measures 49 through 57. The score is written for a single melodic line on a five-line staff, with a grand staff bracket on the left. The notation includes treble and bass clefs, a key signature of one flat (B-flat), and a common time signature (C). The music is composed of eighth and sixteenth notes, often beamed together in groups. The notes are color-coded: red for the right hand (treble clef) and blue for the left hand (bass clef). The score is divided into measures by vertical bar lines, with some measures containing multiple beams of notes. The measures are numbered 49, 51, 53, 55, and 57 at the beginning of each system. The overall layout is clean and professional, typical of a printed musical score.









79

81

83

85

87

Two staves of music. The top staff is in treble clef with a green line above it. The bottom staff is in bass clef with a blue line above it and an orange line below it. The music consists of eighth and sixteenth notes, some beamed together. Measure 87 shows a sequence of notes in both hands. Measure 88 continues the pattern with some notes beamed together.

89

Two staves of music. The top staff is in treble clef with a green line above it. The bottom staff is in bass clef with a blue line above it and an orange line below it. The music consists of eighth and sixteenth notes, some beamed together. Measure 89 shows a sequence of notes in both hands. Measure 90 continues the pattern with some notes beamed together.