

6 Partitas, Clavierübung part I, no. 2

J. S. Bach (1685–1750) BWV 826

♩ = 80

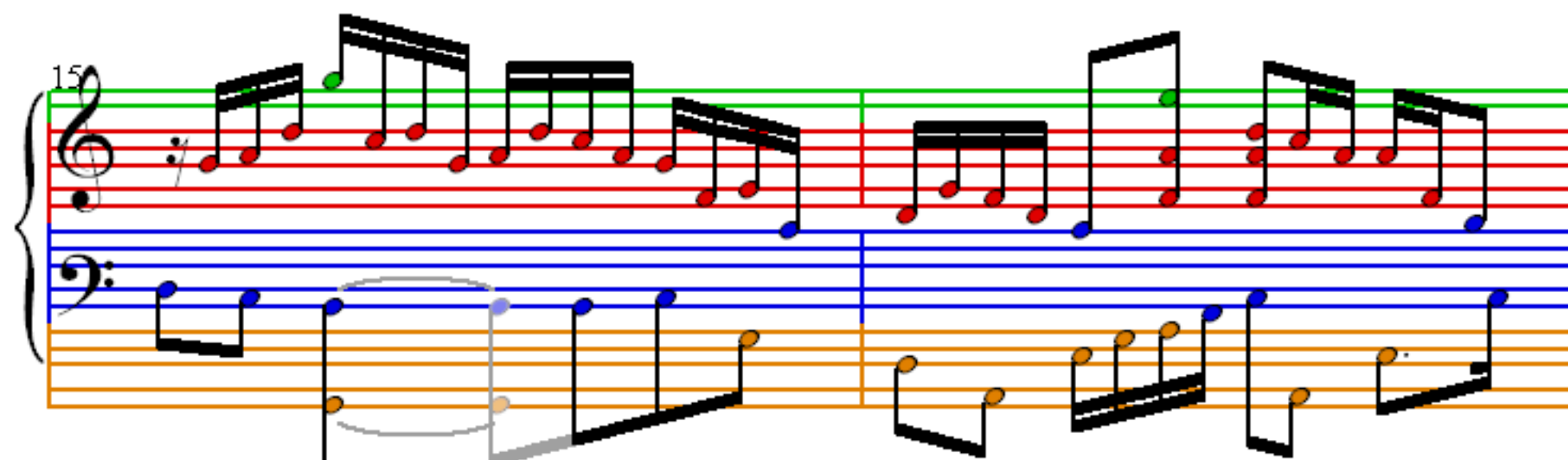
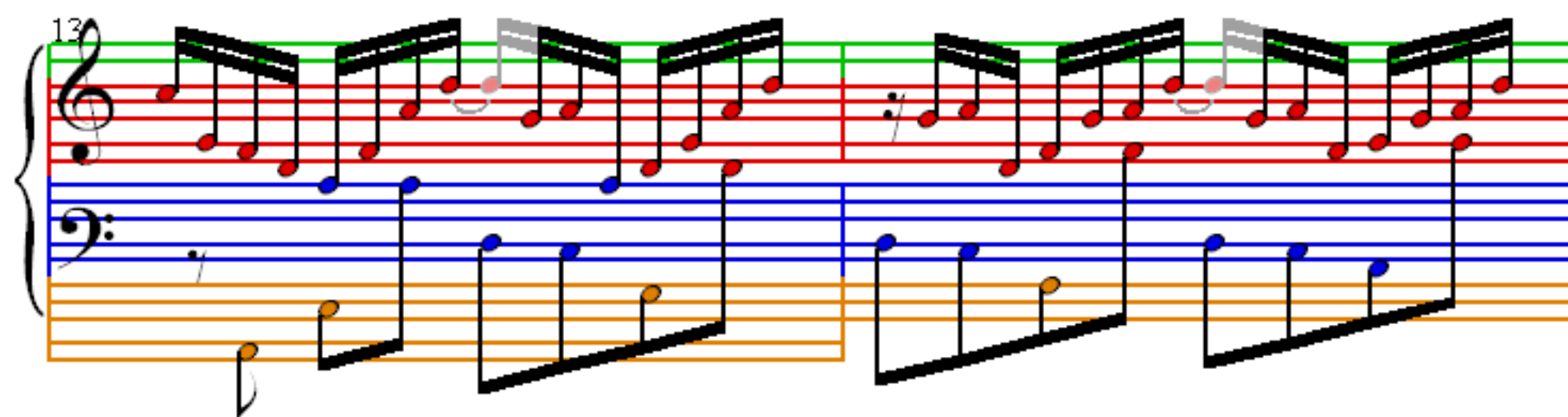
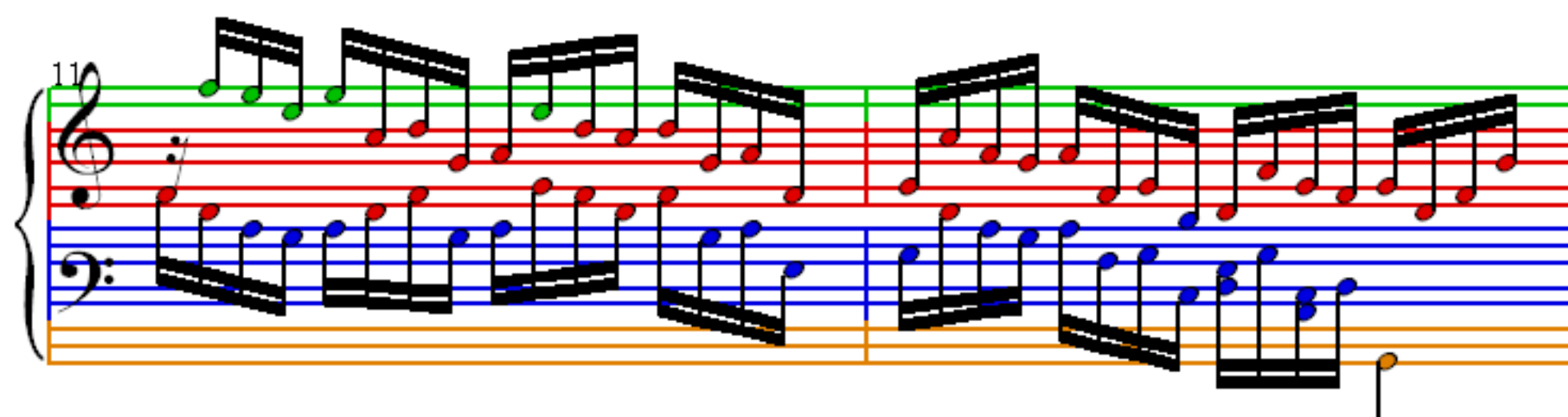
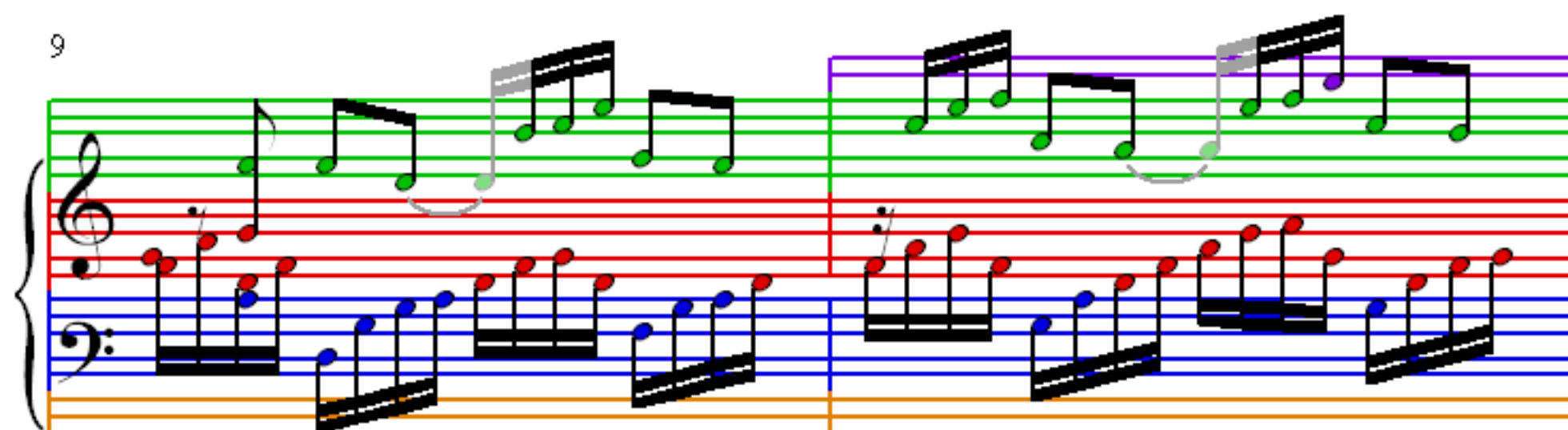
1

3

5

7

9



17

19

21

23

25

Two measures of music. The treble clef staff contains eighth-note chords and single notes, with green and red dots. The bass clef staff contains eighth-note chords and single notes, with blue and orange dots. The staves are color-coded with green, red, blue, and orange lines.

27

Two measures of music. The treble clef staff contains eighth-note chords and single notes, with green and red dots. The bass clef staff contains eighth-note chords and single notes, with blue and orange dots. The staves are color-coded with green, red, blue, and orange lines.

29

Two measures of music. The treble clef staff contains eighth-note chords and single notes, with green and red dots. The bass clef staff contains eighth-note chords and single notes, with blue and orange dots. The staves are color-coded with green, red, blue, and orange lines.

31

Two measures of music. The treble clef staff contains eighth-note chords and single notes, with green and red dots. The bass clef staff contains eighth-note chords and single notes, with blue and orange dots. The staves are color-coded with green, red, blue, and orange lines.