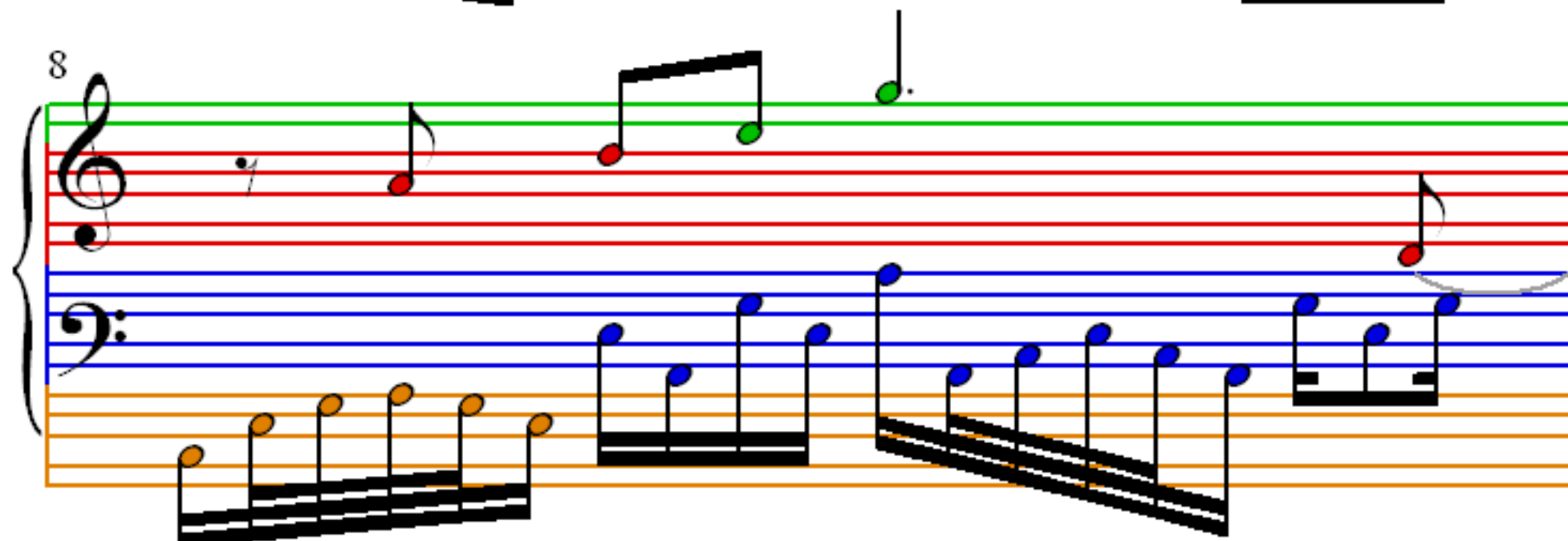
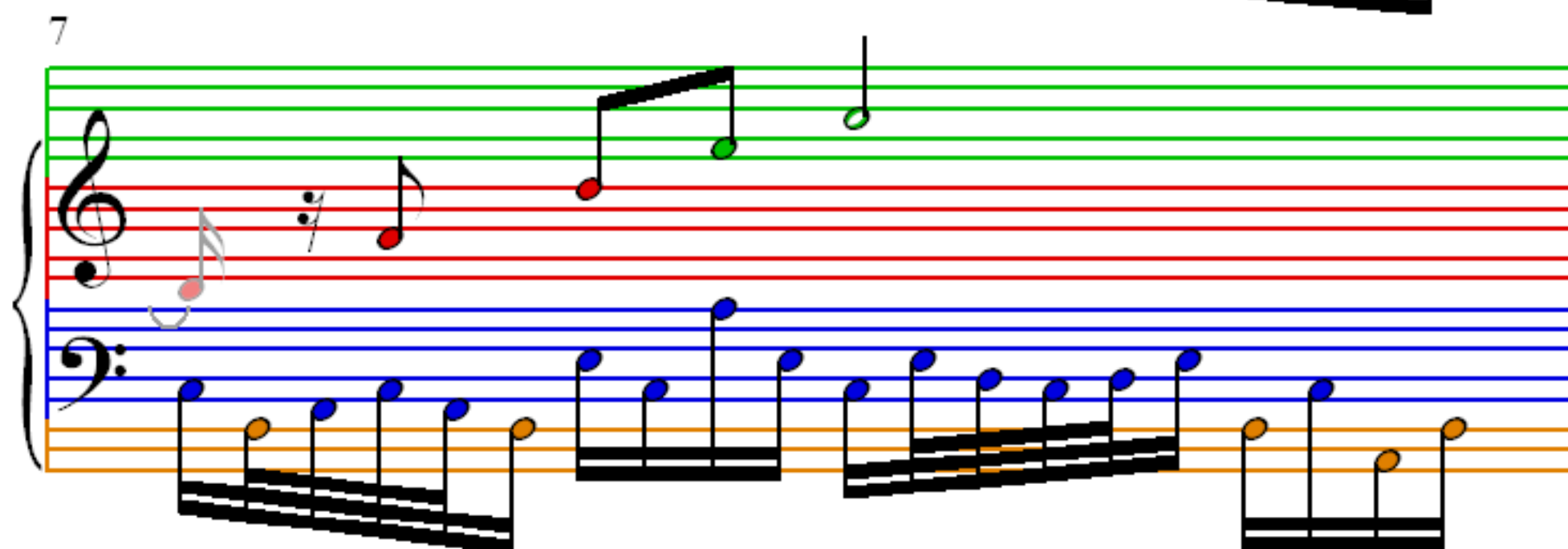
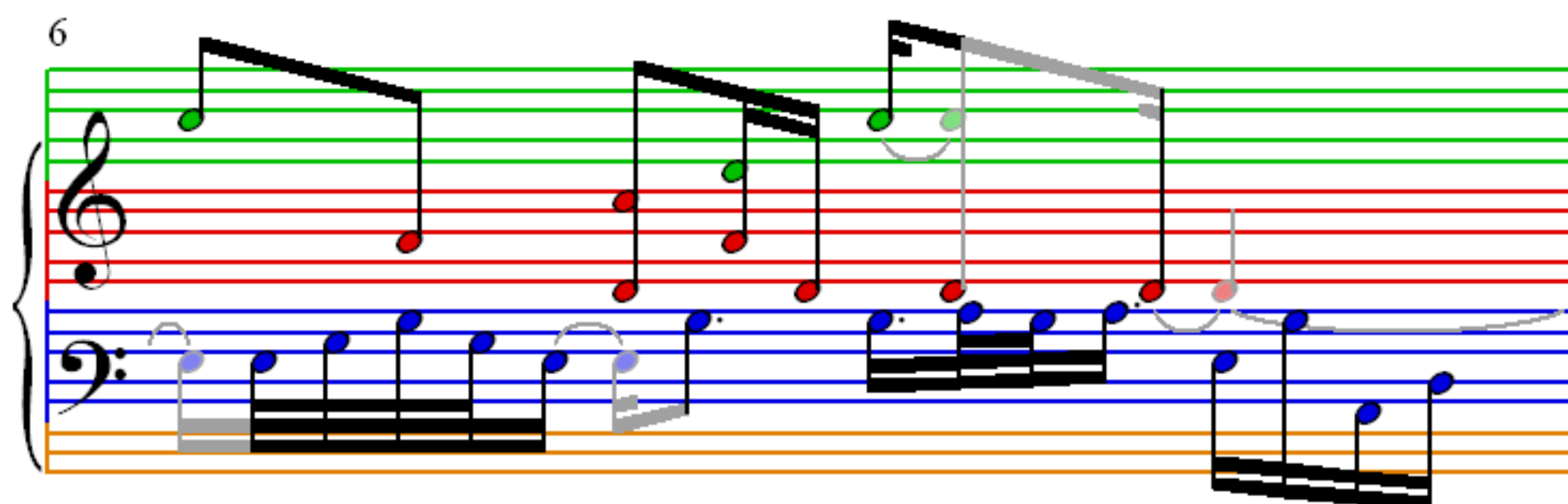
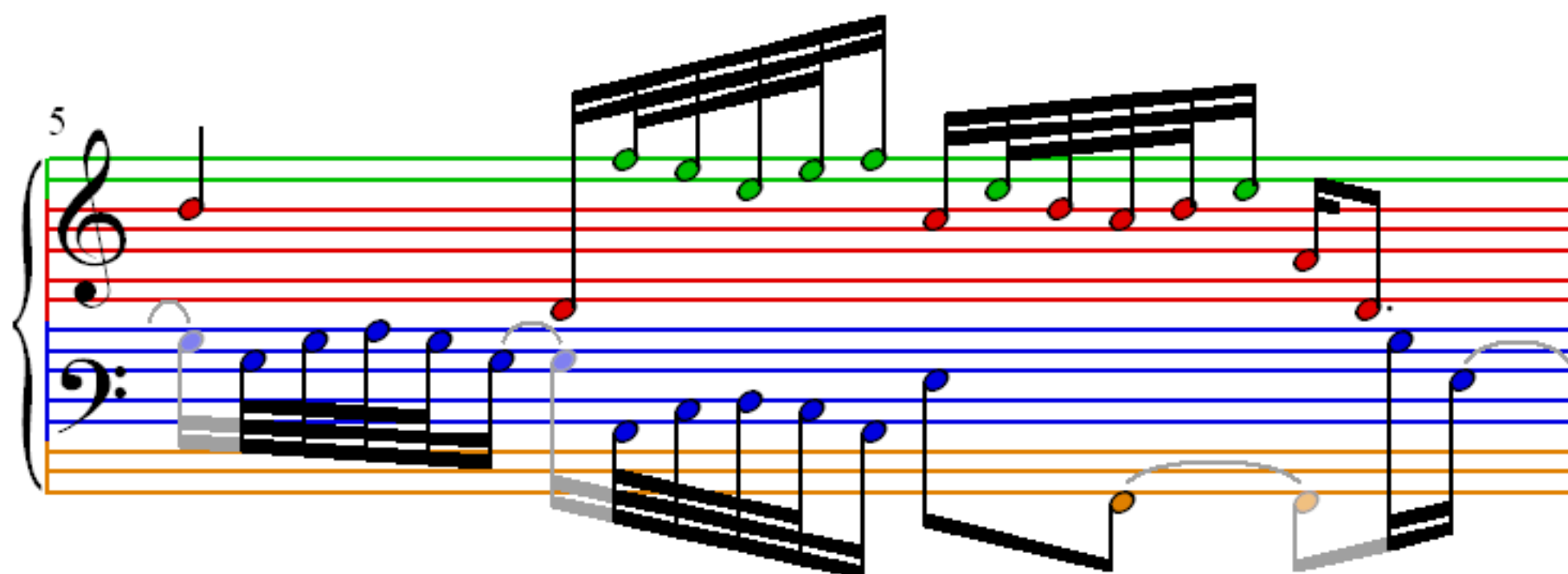


# Invention in B flat

J S Bach

1 = 55

The image displays the first four measures of a musical piece titled 'Invention in B flat' by J.S. Bach. The score is written for a single melodic line on a grand staff, consisting of a treble and a bass clef. The key signature is B-flat major (two flats), and the time signature is 4/4. The tempo is marked as quarter note = 55. The notation includes various musical symbols such as eighth and sixteenth notes, rests, and slurs. The notes are color-coded: red for the first and third measures, blue for the second and fourth measures, and green for the fifth and sixth measures. The first measure begins with a treble clef, a key signature of two flats, and a 4/4 time signature. The second measure starts with a bass clef. The third measure returns to a treble clef, and the fourth measure uses a bass clef. The piece concludes with a double bar line and repeat dots.



9

Measure 9 of the piece. The treble clef staff contains a series of eighth notes, with a group of four notes (F4, G4, A4, Bb4) beamed together and marked with a grey highlight. The bass clef staff contains a series of eighth notes, with a group of four notes (Bb3, A3, G3, F3) beamed together and marked with a grey highlight. The notes are color-coded: red for F4, G4, A4, Bb4, Bb3, A3, G3, F3; green for B4, A4, G4, F4, F3, G3, A3, Bb4; and blue for Bb3, A3, G3, F3.

10

Measure 10 of the piece. The treble clef staff contains a series of eighth notes, with a group of four notes (Bb4, A4, G4, F4) beamed together and marked with a grey highlight. The bass clef staff contains a series of eighth notes, with a group of four notes (Bb3, A3, G3, F3) beamed together and marked with a grey highlight. The notes are color-coded: red for Bb4, A4, G4, F4, Bb3, A3, G3, F3; green for B4, A4, G4, F4, F3, G3, A3, Bb4; and blue for Bb3, A3, G3, F3.

11

Measure 11 of the piece. The treble clef staff contains a series of eighth notes, with a group of four notes (Bb4, A4, G4, F4) beamed together and marked with a grey highlight. The bass clef staff contains a series of eighth notes, with a group of four notes (Bb3, A3, G3, F3) beamed together and marked with a grey highlight. The notes are color-coded: red for Bb4, A4, G4, F4, Bb3, A3, G3, F3; green for B4, A4, G4, F4, F3, G3, A3, Bb4; and blue for Bb3, A3, G3, F3.

12

Measure 12 of the piece. The treble clef staff contains a series of eighth notes, with a group of four notes (Bb4, A4, G4, F4) beamed together and marked with a grey highlight. The bass clef staff contains a series of eighth notes, with a group of four notes (Bb3, A3, G3, F3) beamed together and marked with a grey highlight. The notes are color-coded: red for Bb4, A4, G4, F4, Bb3, A3, G3, F3; green for B4, A4, G4, F4, F3, G3, A3, Bb4; and blue for Bb3, A3, G3, F3.

13

Measure 13 of the 'Invention in B flat' for piano. The treble clef staff (top) features a series of eighth notes ascending from G4 to D5, with a final half note D5. The bass clef staff (bottom) features a series of eighth notes ascending from F3 to C4, with a final half note C4. The notes are color-coded: green for the treble staff and blue for the bass staff. The background has red and blue horizontal lines.

14

Measure 14 of the 'Invention in B flat' for piano. The treble clef staff (top) features a series of eighth notes ascending from E4 to A4, with a final half note A4. The bass clef staff (bottom) features a series of eighth notes ascending from B2 to F3, with a final half note F3. The notes are color-coded: green for the treble staff and blue for the bass staff. The background has red and blue horizontal lines.

15

Measure 15 of the 'Invention in B flat' for piano. The treble clef staff (top) features a series of eighth notes ascending from G4 to D5, with a final half note D5. The bass clef staff (bottom) features a series of eighth notes ascending from F3 to C4, with a final half note C4. The notes are color-coded: green for the treble staff and blue for the bass staff. The background has red and blue horizontal lines.

16

Measure 16 of the 'Invention in B flat' for piano. The treble clef staff (top) features a series of eighth notes ascending from E4 to A4, with a final half note A4. The bass clef staff (bottom) features a series of eighth notes ascending from B2 to F3, with a final half note F3. The notes are color-coded: green for the treble staff and blue for the bass staff. The background has red and blue horizontal lines.

17

Measure 17 of the piece. The treble clef staff (top) features a series of eighth notes, with some notes highlighted in green and others in red. The bass clef staff (bottom) contains a sequence of eighth notes, with some notes highlighted in blue and others in orange. The notation includes a repeat sign in the bass staff.

18

Measure 18 of the piece. The treble clef staff (top) shows a sequence of eighth notes, with some notes highlighted in green and others in red. The bass clef staff (bottom) contains a sequence of eighth notes, with some notes highlighted in blue and others in orange. The notation includes a repeat sign in the bass staff.

19

Measure 19 of the piece. The treble clef staff (top) features a sequence of eighth notes, with some notes highlighted in green and others in red. The bass clef staff (bottom) contains a sequence of eighth notes, with some notes highlighted in blue and others in orange. The notation includes a repeat sign in the bass staff.