

# Canon

Pachaballe

$\bullet = 80$

1

4

7

10

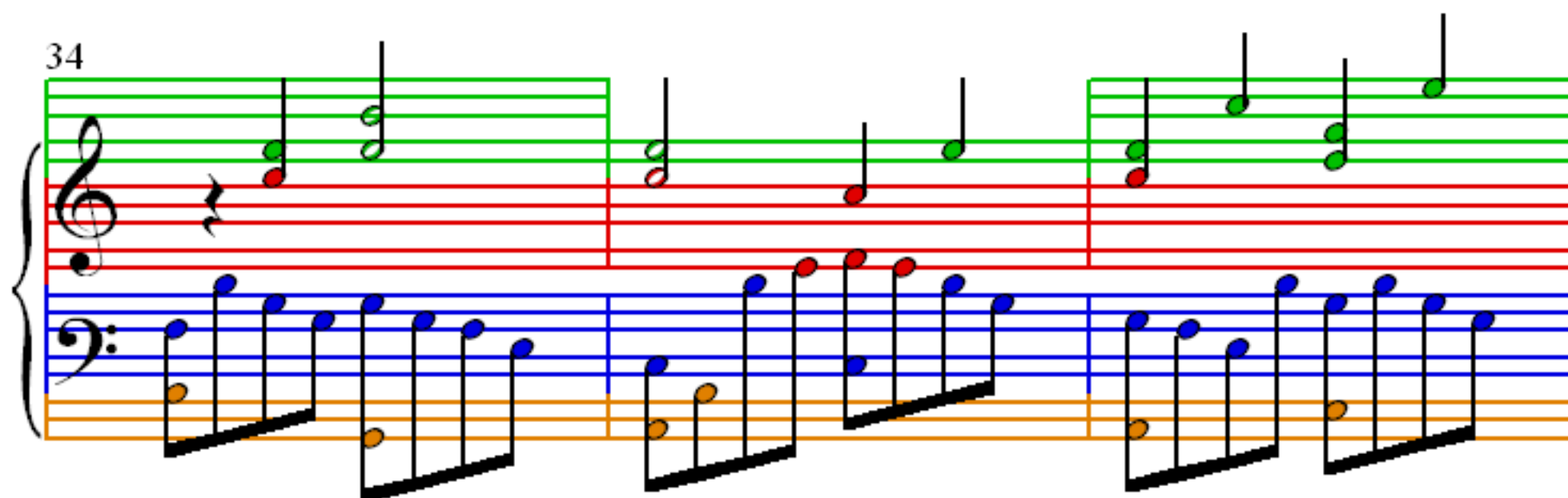
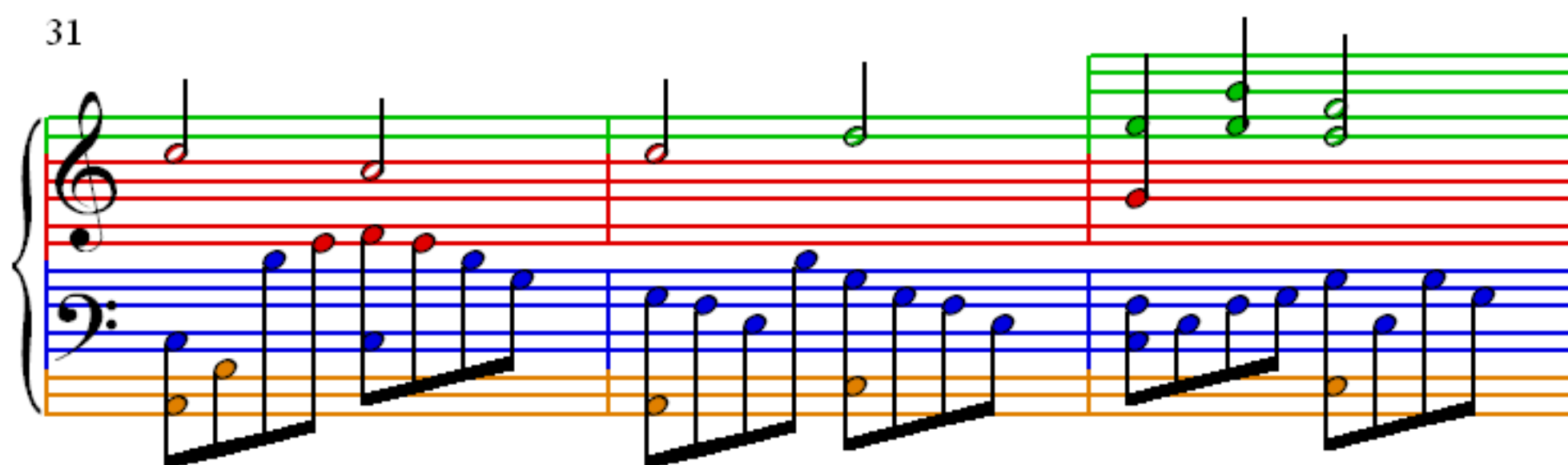
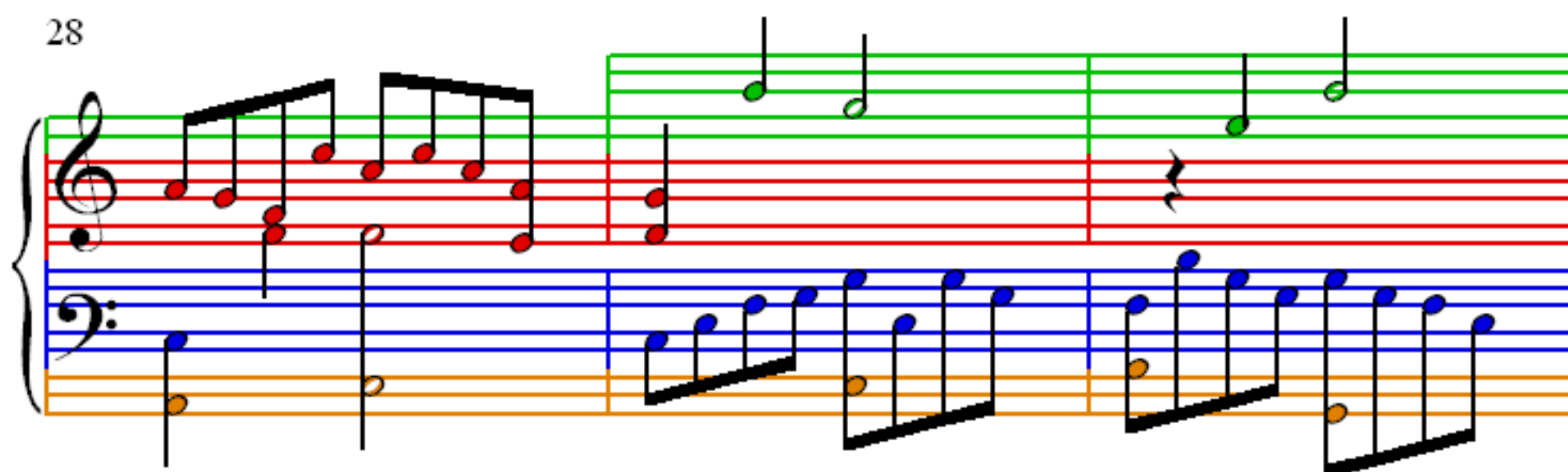
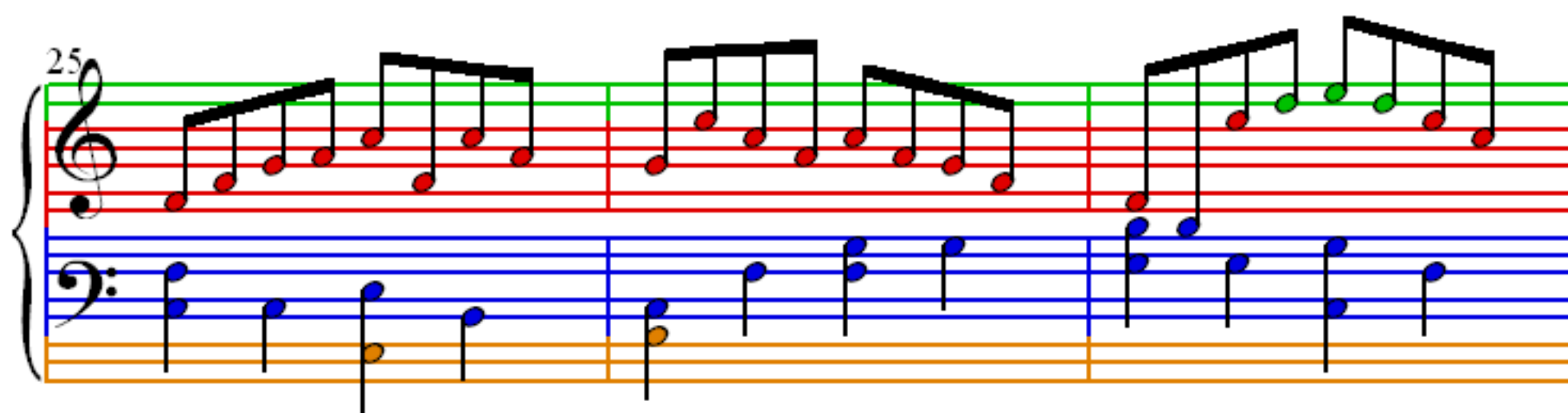
The image displays a musical score for a piano piece titled 'Canon' by J.S. Bach. The score is presented in four systems, each beginning with a measure number: 1, 4, 7, and 10. The music is written for piano, with a treble staff (marked with a red 'C') and a bass staff (marked with a blue 'B'). The time signature is 4/4, and the tempo is indicated as 80 beats per minute. The notation includes various musical symbols such as notes, rests, and bar lines, with some notes highlighted in red and blue. The bass staff is marked with a blue 'B' and the treble staff with a red 'C'.

13

16

19

22



37

Measures 37-38. Treble clef staff: 8 measures of eighth notes, alternating green and red dots. Bass clef staff: 2 measures, mostly empty with a few blue and orange notes.

39

Measures 39-40. Treble clef staff: 8 measures of eighth notes, alternating green and red dots. Bass clef staff: 2 measures, mostly empty with a few blue and orange notes.

41

Measures 41-42. Treble clef staff: 8 measures of eighth notes, alternating green and red dots. Bass clef staff: 2 measures, mostly empty with a few blue and orange notes.

43

Measures 43-44. Treble clef staff: 8 measures of eighth notes, alternating green and red dots. Bass clef staff: 2 measures, mostly empty with a few blue and orange notes.

45

47

49

51

53

Measures 53-55. Treble clef: measures 53-54 have green notes (G4, A4, B4, C5) with black stems; measure 55 has red notes (G4, A4, B4, C5) with black stems. Bass clef: measures 53-54 have blue notes (F3, E3, D3, C3) with black stems; measure 55 has orange notes (F3, E3, D3, C3) with black stems. A third orange line is at the bottom of the system.

56

Measures 56-58. Treble clef: measures 56-57 have green notes (G4, A4, B4, C5) with black stems; measure 58 has red notes (G4, A4, B4, C5) with black stems. Bass clef: measures 56-57 have blue notes (F3, E3, D3, C3) with black stems; measure 58 has orange notes (F3, E3, D3, C3) with black stems. A third orange line is at the bottom of the system.

59

Measures 59-61. Treble clef: measures 59-60 have green notes (G4, A4, B4, C5) with black stems; measure 61 has red notes (G4, A4, B4, C5) with black stems. Bass clef: measures 59-60 have blue notes (F3, E3, D3, C3) with black stems; measure 61 has orange notes (F3, E3, D3, C3) with black stems. A third orange line is at the bottom of the system.

62

Measures 62-64. Treble clef: measures 62-63 have green notes (G4, A4, B4, C5) with black stems; measure 64 has red notes (G4, A4, B4, C5) with black stems. Bass clef: measures 62-63 have blue notes (F3, E3, D3, C3) with black stems; measure 64 has orange notes (F3, E3, D3, C3) with black stems. A third orange line is at the bottom of the system.

65

Measures 65-67. Treble clef: Measure 65 has a half note G4 (green), quarter notes A4 (red), B4 (green), and C5 (red). Measure 66 has a half note D5 (green), quarter notes E5 (red), F5 (green), and G5 (red). Measure 67 has a half note A5 (green), quarter notes B5 (red), C6 (green), and D6 (red). Bass clef: Measure 65 has a half note C3 (blue), quarter notes D3 (blue), E3 (blue), and F3 (blue). Measure 66 has a half note G3 (blue), quarter notes A3 (blue), B3 (blue), and C4 (blue). Measure 67 has a half note D4 (blue), quarter notes E4 (blue), F4 (blue), and G4 (blue). A third line at the bottom has a half note C3 (orange) in measure 65, a half note D3 (orange) in measure 66, and a half note E3 (orange) in measure 67.

68

Measures 68-70. Treble clef: Measure 68 has a half note E5 (green), quarter notes F5 (red), G5 (green), and A5 (red). Measure 69 has a half note B5 (green), quarter notes C6 (red), D6 (green), and E6 (red). Measure 70 has a half note F6 (green), quarter notes G6 (red), A6 (green), and B6 (red). Bass clef: Measure 68 has a half note A2 (blue), quarter notes B2 (blue), C3 (blue), and D3 (blue). Measure 69 has a half note E3 (blue), quarter notes F3 (blue), G3 (blue), and A3 (blue). Measure 70 has a half note B3 (blue), quarter notes C4 (blue), D4 (blue), and E4 (blue). A third line at the bottom has a half note C3 (orange) in measure 68, a half note D3 (orange) in measure 69, and a half note E3 (orange) in measure 70.

71

Measures 71-73. Treble clef: Measure 71 has a half note C6 (green), quarter notes D6 (red), E6 (green), and F6 (red). Measure 72 has a half note G6 (green), quarter notes A6 (red), B6 (green), and C7 (red). Measure 73 has a half note D7 (green), quarter notes E7 (red), F7 (green), and G7 (red). Bass clef: Measure 71 has a half note F3 (blue), quarter notes G3 (blue), A3 (blue), and B3 (blue). Measure 72 has a half note C4 (blue), quarter notes D4 (blue), E4 (blue), and F4 (blue). Measure 73 has a half note G4 (blue), quarter notes A4 (blue), B4 (blue), and C5 (blue). A third line at the bottom has a half note C3 (orange) in measure 71, a half note D3 (orange) in measure 72, and a half note E3 (orange) in measure 73.

74

Measures 74-76. Treble clef: Measure 74 has a half note A6 (green), quarter notes B6 (red), C7 (green), and D7 (red). Measure 75 has a half note E7 (green), quarter notes F7 (red), G7 (green), and A7 (red). Measure 76 has a half note B7 (green), quarter notes C8 (red), D8 (green), and E8 (red). Bass clef: Measure 74 has a half note D4 (blue), quarter notes E4 (blue), F4 (blue), and G4 (blue). Measure 75 has a half note A4 (blue), quarter notes B4 (blue), C5 (blue), and D5 (blue). Measure 76 has a half note E5 (blue), quarter notes F5 (blue), G5 (blue), and A5 (blue). A third line at the bottom has a half note C3 (orange) in measure 74, a half note D3 (orange) in measure 75, and a half note E3 (orange) in measure 76.

77

Measures 77-79: The treble staff contains a series of beamed eighth and sixteenth notes, mostly on the green line. The bass staff has a blue line at the top and an orange line at the bottom, with notes primarily on the blue line and the orange line.

80

Measures 80-82: The treble staff continues with beamed notes, including some on the green line. The bass staff has a blue line at the top and an orange line at the bottom, with notes primarily on the blue line and the orange line.

83

Measures 83-85: The treble staff continues with beamed notes, including some on the green line. The bass staff has a blue line at the top and an orange line at the bottom, with notes primarily on the blue line and the orange line.

86

Measures 86-88: The treble staff continues with beamed notes, including some on the green line. The bass staff has a blue line at the top and an orange line at the bottom, with notes primarily on the blue line and the orange line.

89

Measures 89-91. Treble clef: Measure 89 has a half note G4 (green dot) and a half note F#4 (red dot). Measure 90 has a half note E4 (green dot) and a half note D4 (red dot). Measure 91 has a half note C4 (green dot) and a half note B3 (red dot). Bass clef: Measure 89 has a half note G3 (blue dot) and a half note F#3 (orange dot). Measure 90 has a half note E3 (blue dot) and a half note D3 (orange dot). Measure 91 has a half note C3 (blue dot) and a half note B2 (orange dot).

92

Measures 92-94. Treble clef: Measure 92 has a half note A4 (green dot) and a half note G4 (red dot). Measure 93 has a half note F#4 (green dot) and a half note E4 (red dot). Measure 94 has a half note D4 (green dot) and a half note C4 (red dot). Bass clef: Measure 92 has a half note G3 (blue dot) and a half note F#3 (orange dot). Measure 93 has a half note E3 (blue dot) and a half note D3 (orange dot). Measure 94 has a half note C3 (blue dot) and a half note B2 (orange dot).

95

Measures 95-97. Treble clef: Measure 95 has a half note B4 (green dot) and a half note A4 (red dot). Measure 96 has a half note G4 (green dot) and a half note F#4 (red dot). Measure 97 has a half note E4 (green dot) and a half note D4 (red dot). Bass clef: Measure 95 has a half note G3 (blue dot) and a half note F#3 (orange dot). Measure 96 has a half note E3 (blue dot) and a half note D3 (orange dot). Measure 97 has a half note C3 (blue dot) and a half note B2 (orange dot).

98

Measures 98-100. Treble clef: Measure 98 has a half note F#4 (green dot) and a half note E4 (purple dot). Measure 99 has a half note D4 (green dot) and a half note C4 (purple dot). Measure 100 has a half note B3 (green dot) and a half note A3 (purple dot). Bass clef: Measure 98 has a half note G3 (blue dot) and a half note F#3 (orange dot). Measure 99 has a half note E3 (blue dot) and a half note D3 (orange dot). Measure 100 has a half note C3 (blue dot) and a half note B2 (orange dot).

101

104

107

110