

Minuet

Luigi Boccherini

$\text{♩} = 75$

1

3

5

7


This image displays the first seven measures of a Minuet by Luigi Boccherini. The score is written for piano in 3/4 time, with a tempo of 75 beats per minute. The notation is color-coded: the right hand (treble clef) uses green notes, and the left hand (bass clef) uses blue notes. Red notes indicate accidentals. The first measure is marked with a '1' and a slur over the first two notes. Measures 3 and 5 are marked with '3' and '5' respectively. The score is divided into four systems, each containing a grand staff. The first system covers measures 1-2, the second covers measures 3-4, the third covers measures 5-6, and the fourth covers measures 7-8. The notation includes various musical symbols such as treble and bass clefs, a key signature of one flat (B-flat), and a variety of note values including eighth and sixteenth notes, as well as rests.

A musical score for the song 'The Rose Tree'. The score is written for three parts: Treble, Alto, and Bass. The Treble part is on a five-line staff with a green top line and a red bottom line. The Alto part is on a four-line staff with a red top line and a blue bottom line. The Bass part is on a five-line staff with a blue top line and a red bottom line. The score is divided into two measures by a vertical bar line. The first measure contains the following notes: Treble (G4, A4, B4, C5, B4, A4, G4), Alto (D4, E4, F4, G4, F4, E4, D4), and Bass (C3, D3, E3, F3, G3, F3, E3). The second measure contains the following notes: Treble (G4, A4, B4, C5, B4, A4, G4), Alto (D4, E4, F4, G4, F4, E4, D4), and Bass (C3, D3, E3, F3, G3, F3, E3). The notes are color-coded: Treble notes are green, Alto notes are red, and Bass notes are blue. The Treble part has a treble clef and a key signature of one sharp (F#). The Alto part has an alto clef and a key signature of one sharp (F#). The Bass part has a bass clef and a key signature of one sharp (F#). The score is labeled '10' in the top left corner.

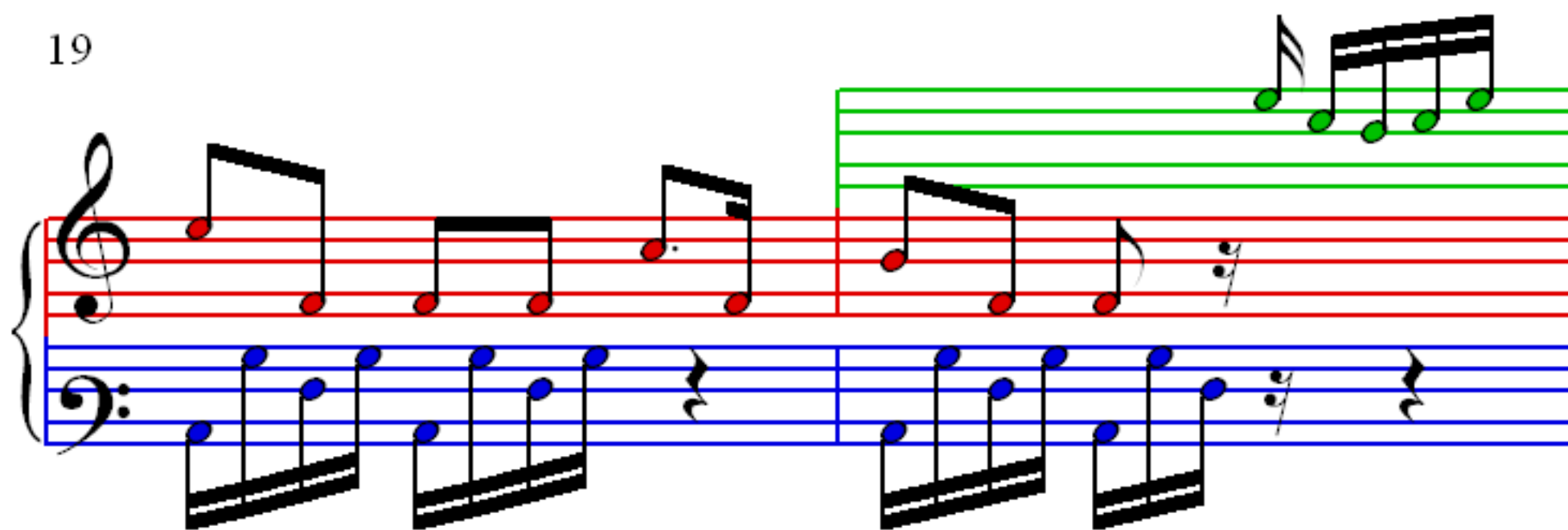
12

The musical score for Example 12 consists of two staves. The top staff is a treble clef staff with a key signature of one flat (B-flat). It contains two measures of music. The first measure has a quarter note on G4, a quarter note on A4, and a quarter note on B4. The second measure has a quarter note on C5, a quarter note on B4, and a quarter note on A4. The bottom staff is a bass clef staff with a key signature of one flat (B-flat). It contains two measures of music. The first measure has a quarter note on F3, a quarter note on G3, and a quarter note on A3. The second measure has a quarter note on B2, a quarter note on C3, and a quarter note on D3. The notes are color-coded: green for the treble staff and blue for the bass staff.

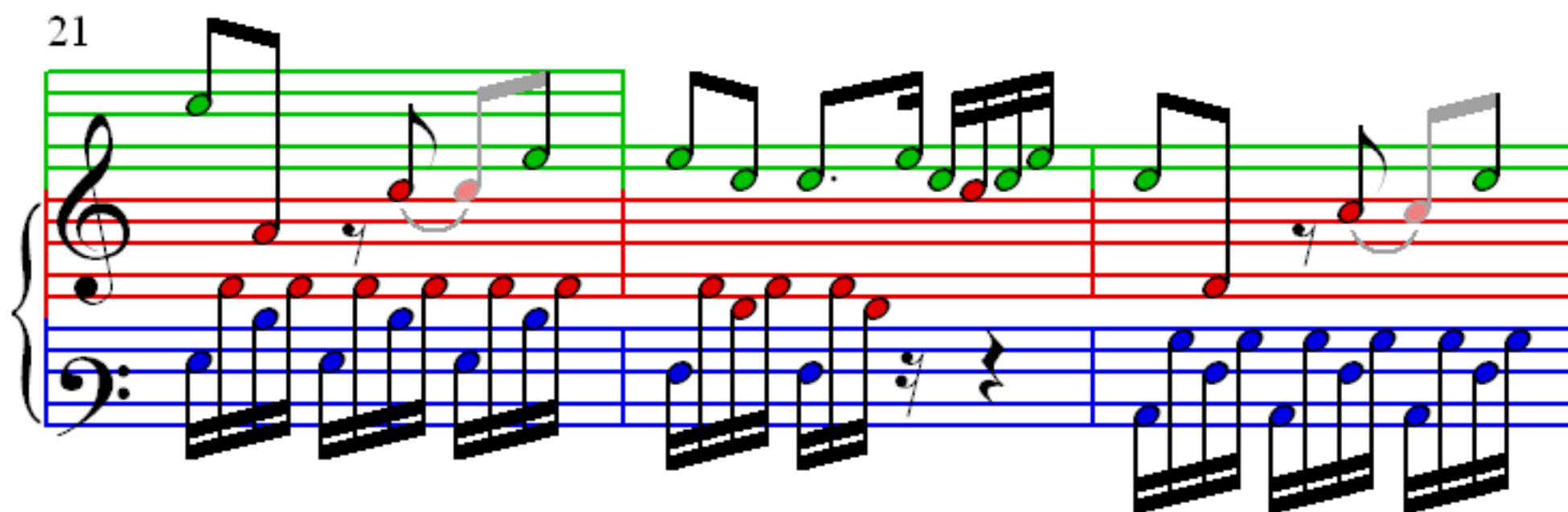
14



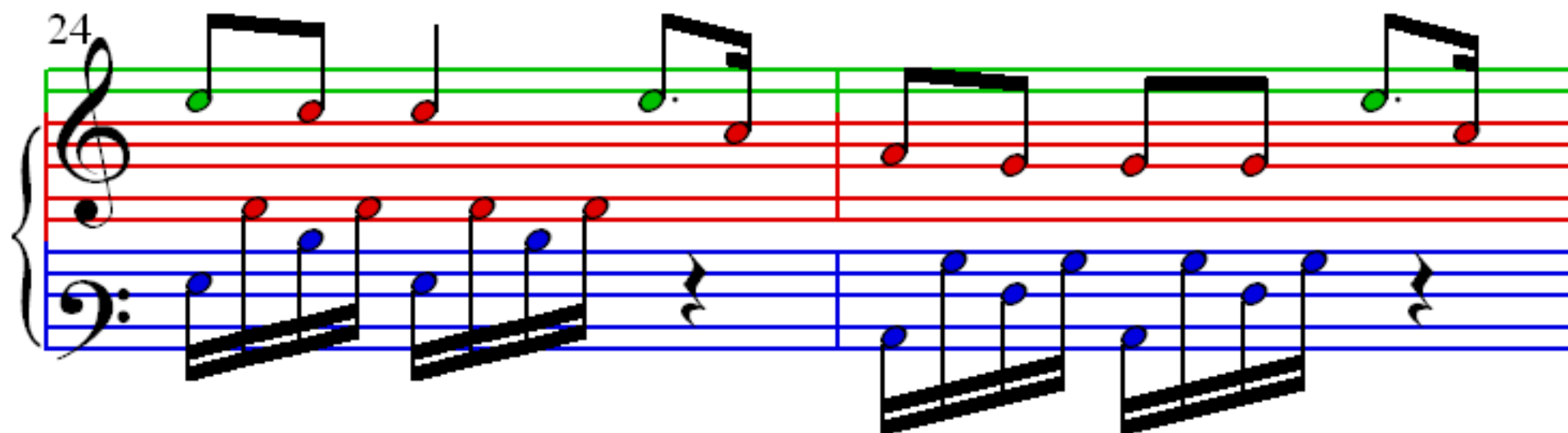
19



21



24



26

