

Ain't No Pleasing You

Chas'n'Dave

♩ = 140

1

Measures 1-4 of the piece. The treble clef staff has a key signature of one flat (Bb) and a time signature of 6/8. The melody consists of quarter and eighth notes, mostly on the upper half of the staff. The bass clef staff provides a harmonic accompaniment with chords and single notes, primarily on the lower half of the staff. The notes are color-coded: green for the melody and blue for the accompaniment.

5

Measures 5-8. The melody continues with eighth and quarter notes. There are some rests in the melody in measures 7 and 8. The bass line remains consistent with the previous section.

9

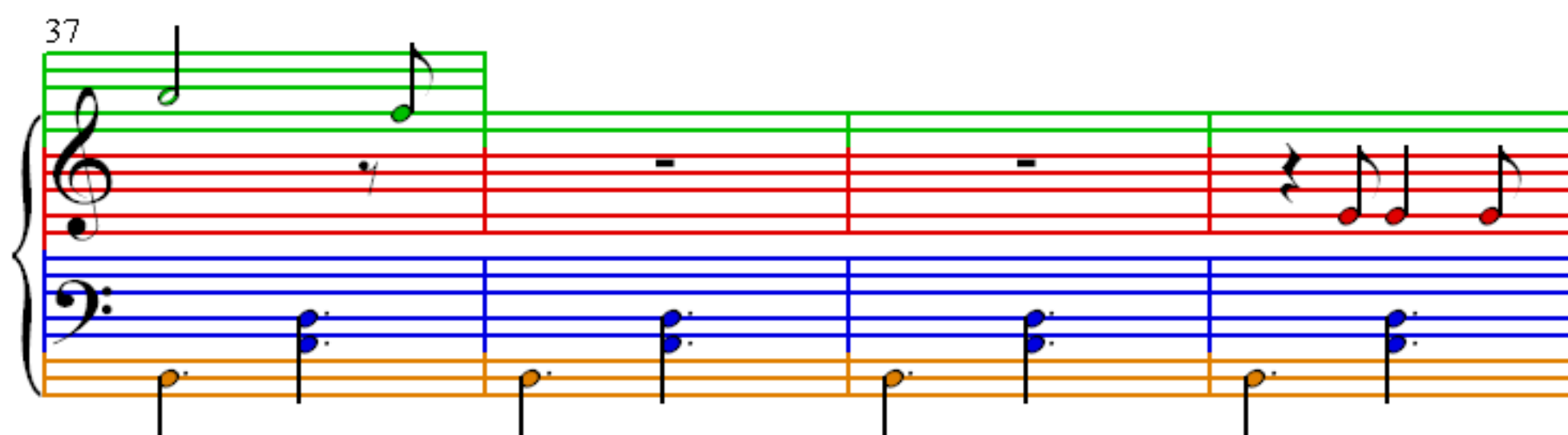
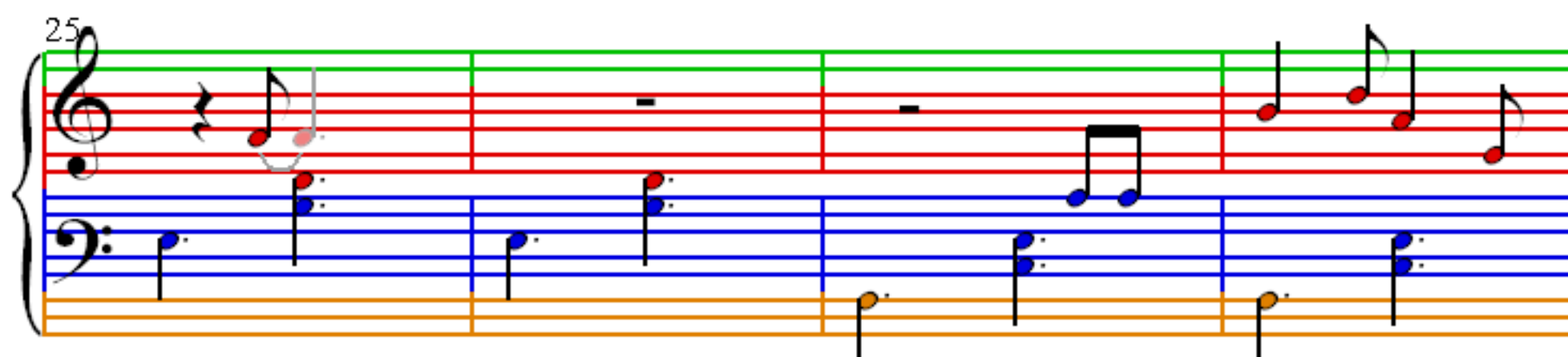
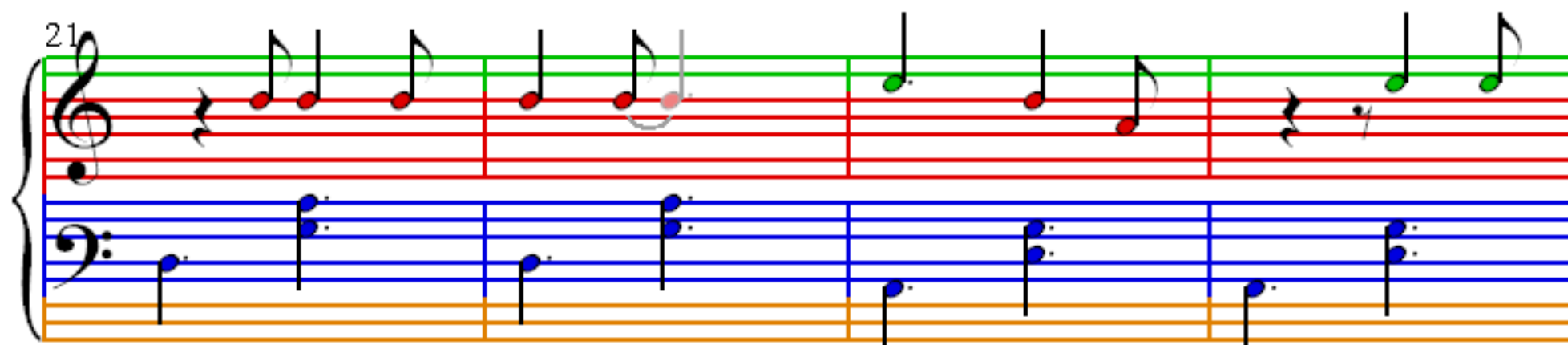
Measures 9-12. Measures 9 and 10 feature a whole rest in the melody. Measures 11 and 12 show the melody re-entering with quarter notes. The bass line continues with its accompaniment.

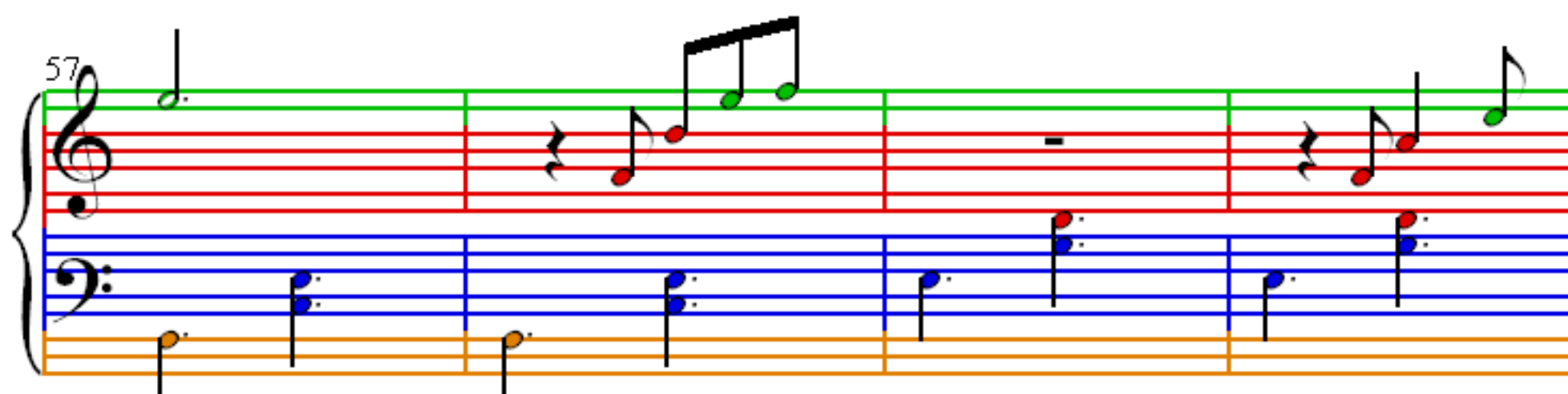
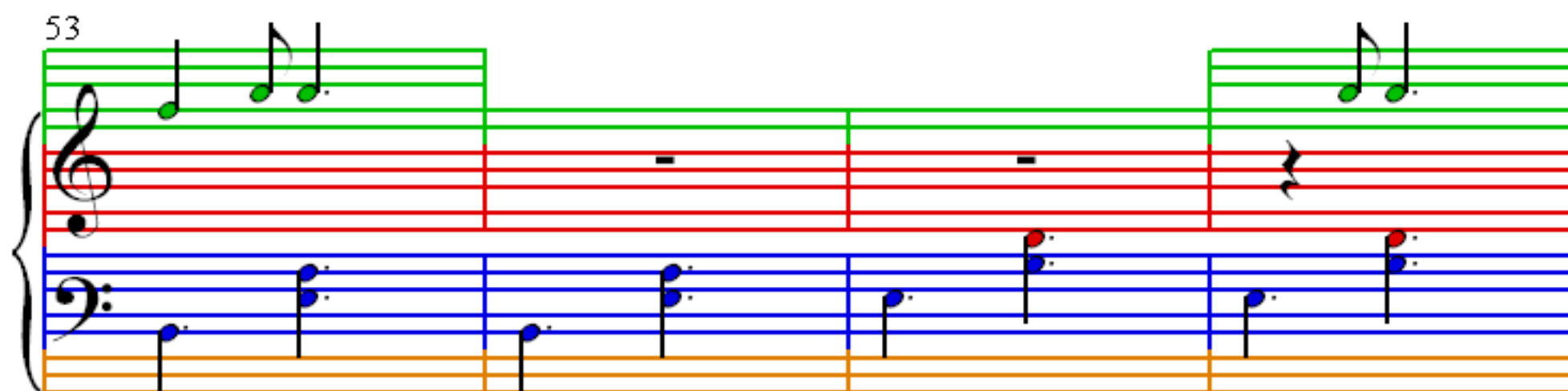
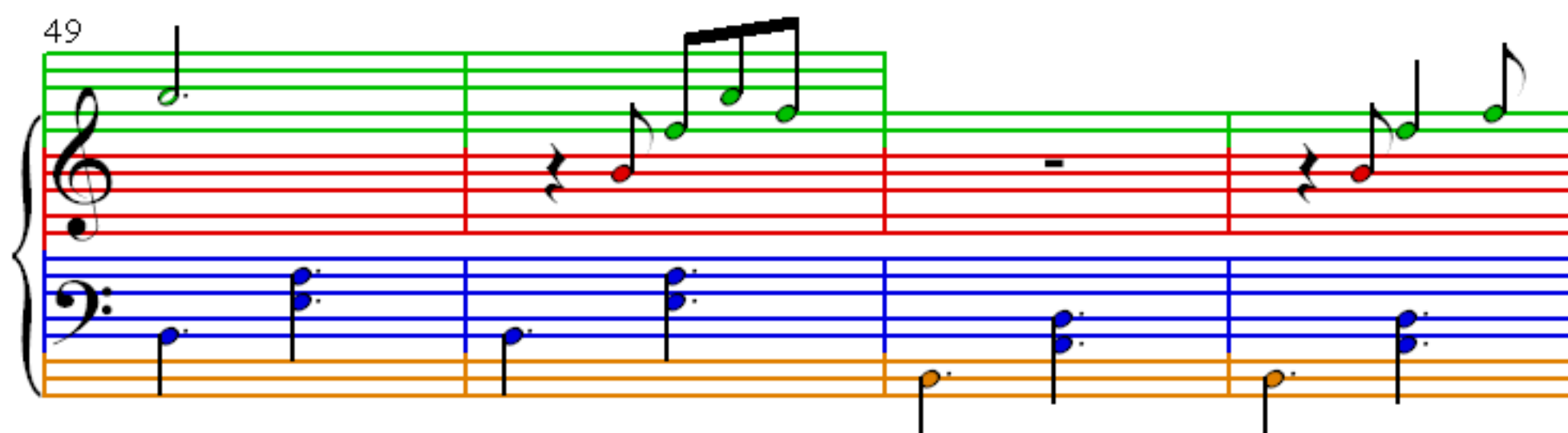
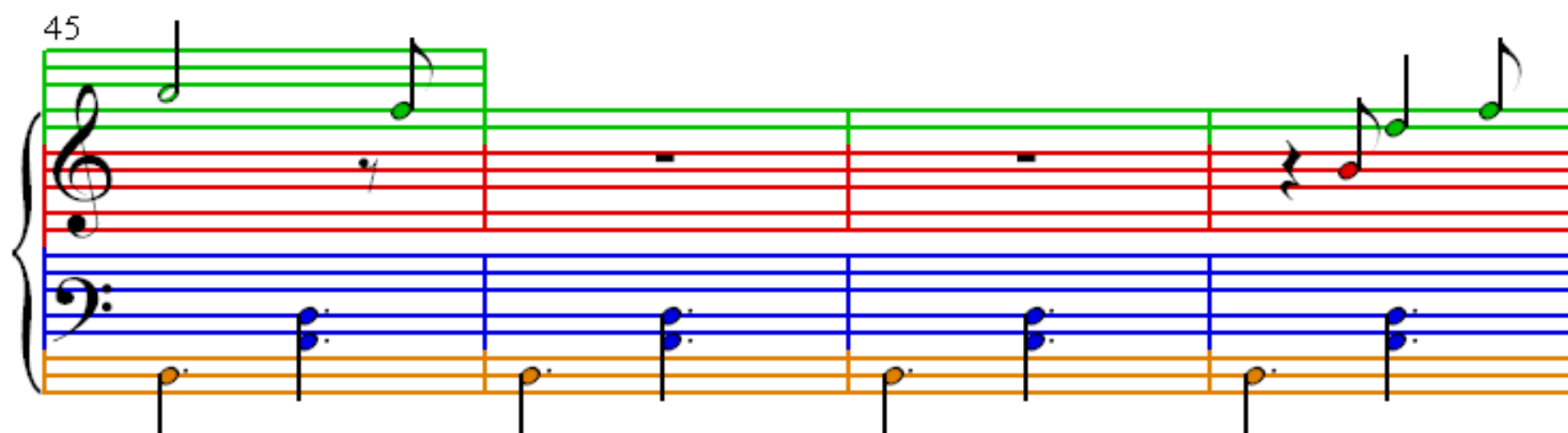
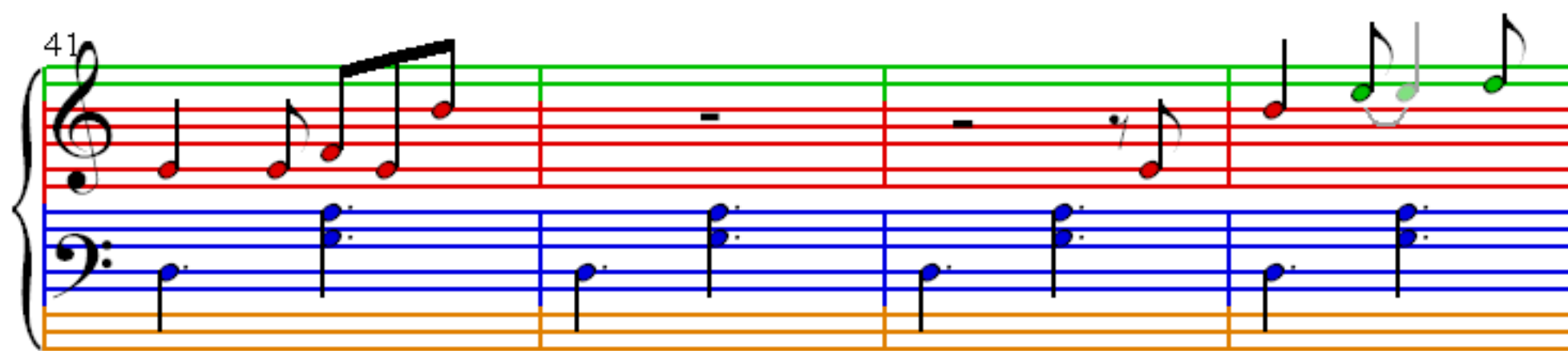
13

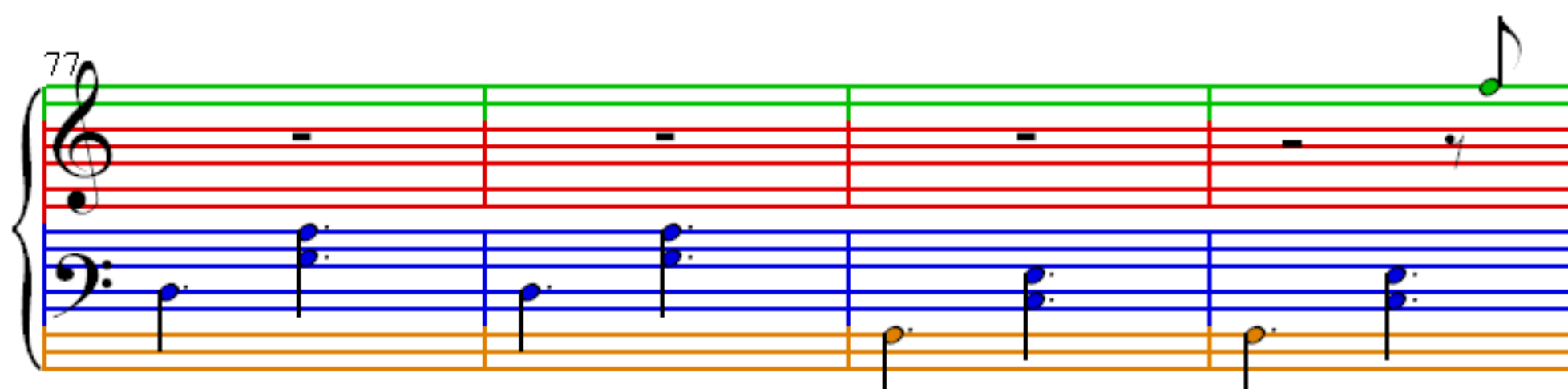
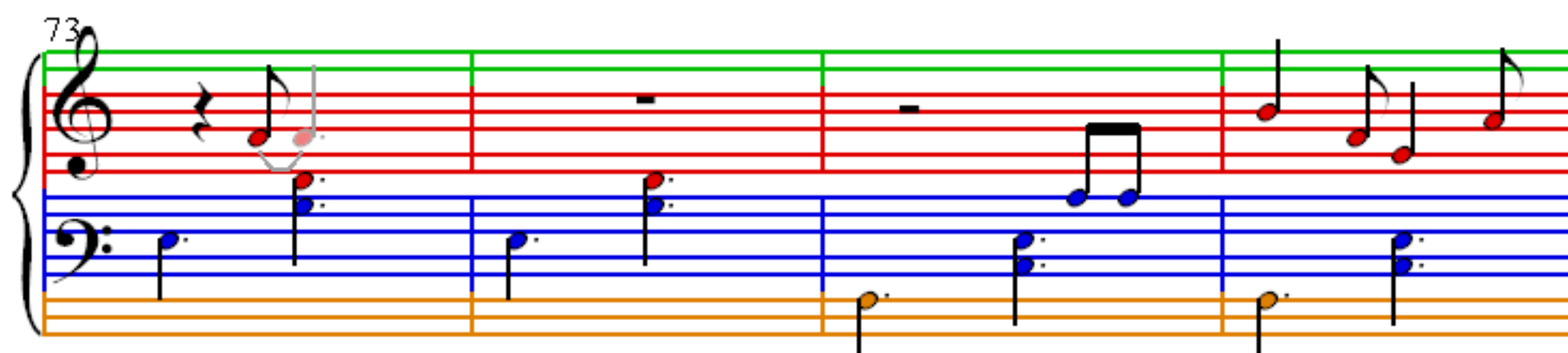
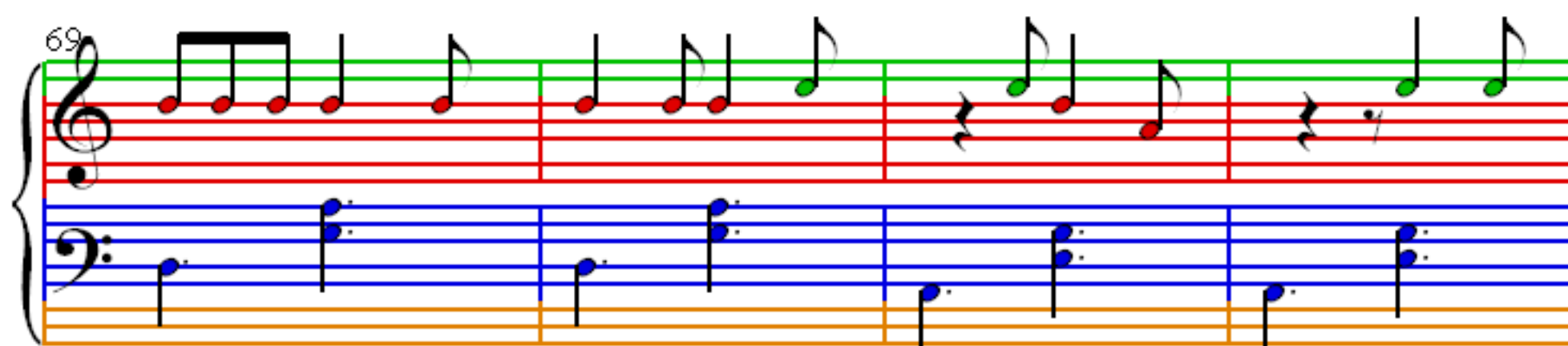
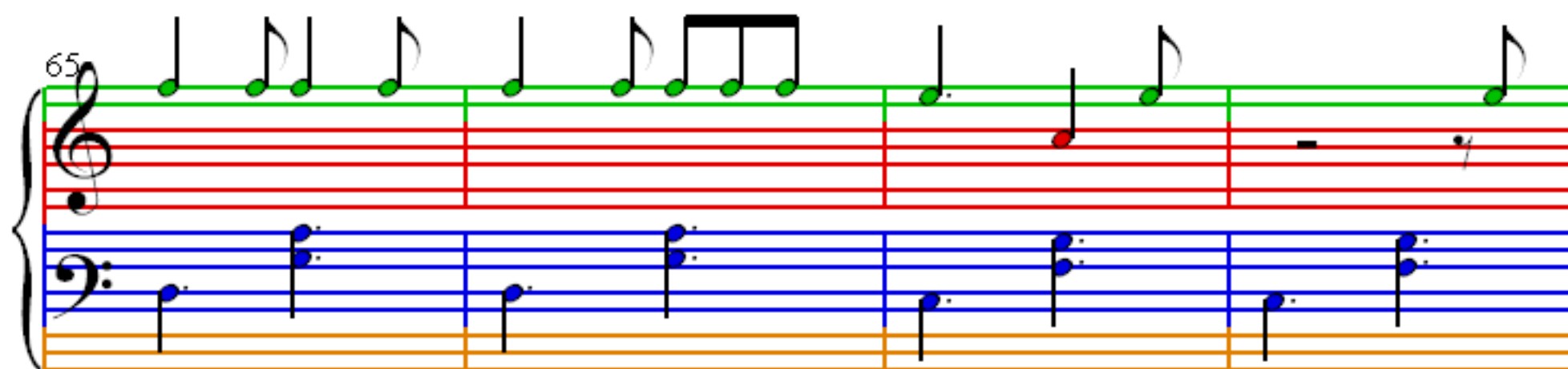
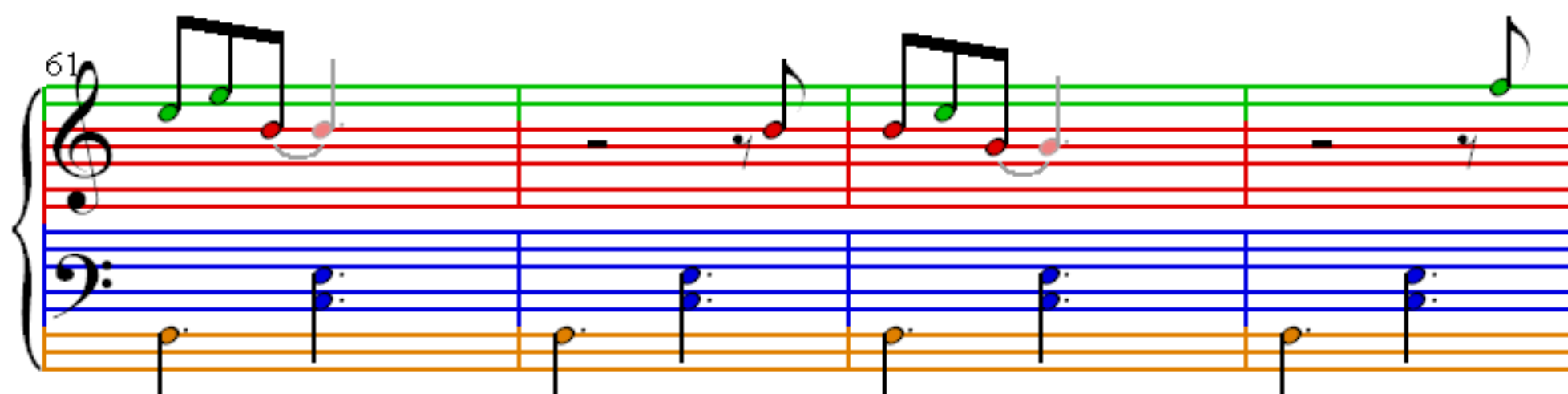
Measures 13-16. Measures 13, 14, and 15 have whole rests in the melody. Measure 16 ends with a single eighth note in the melody. The bass line continues with its accompaniment.

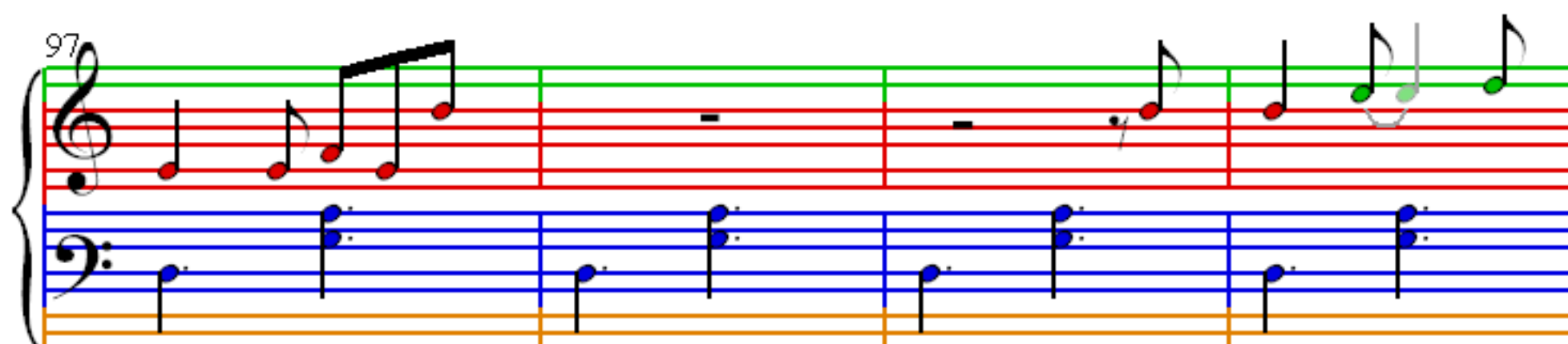
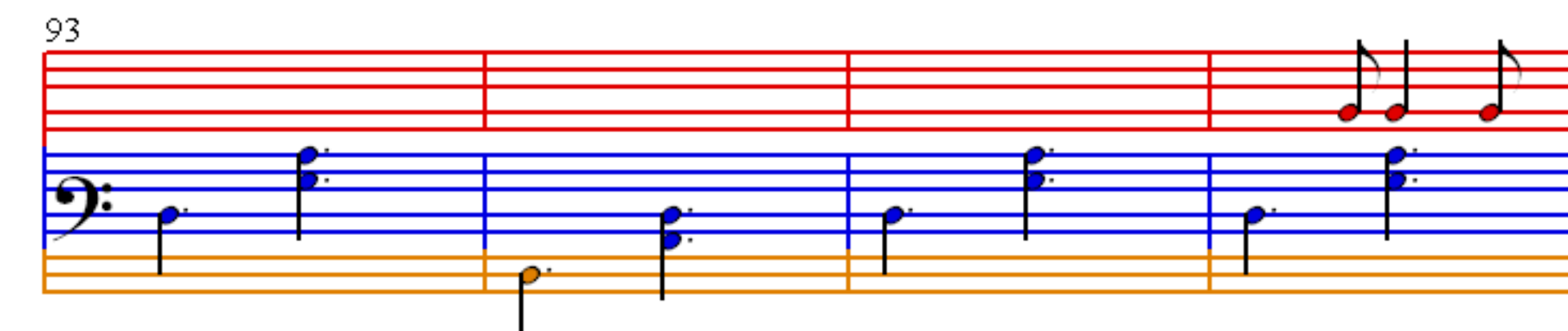
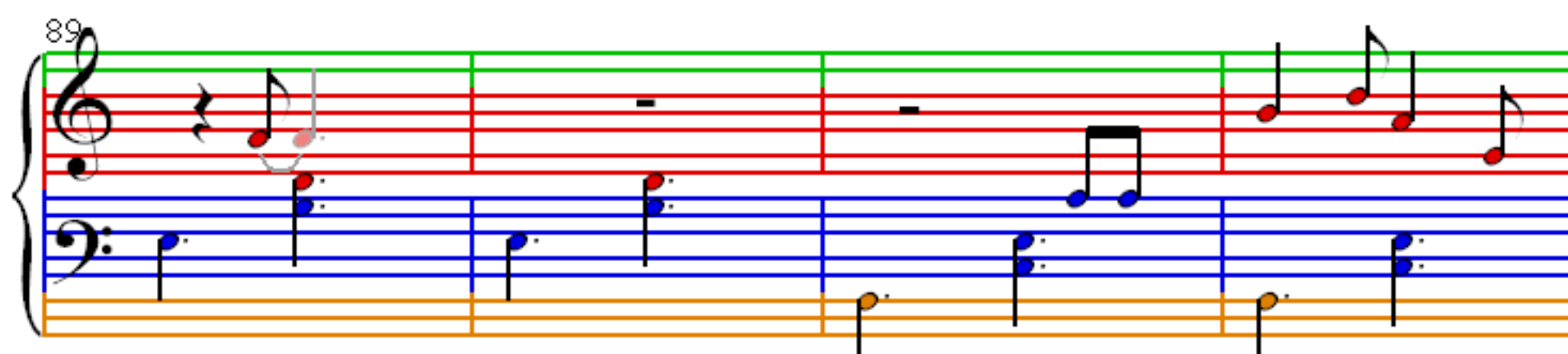
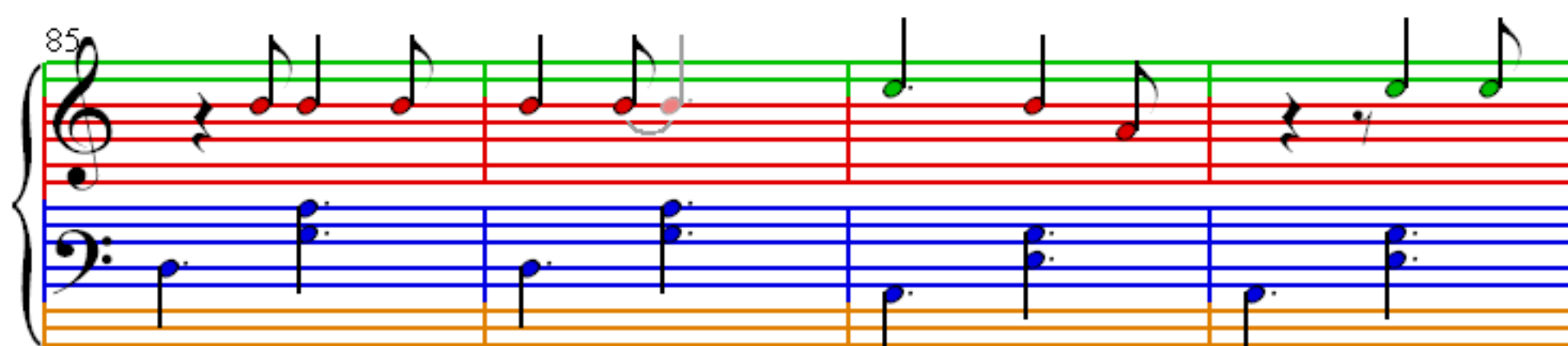
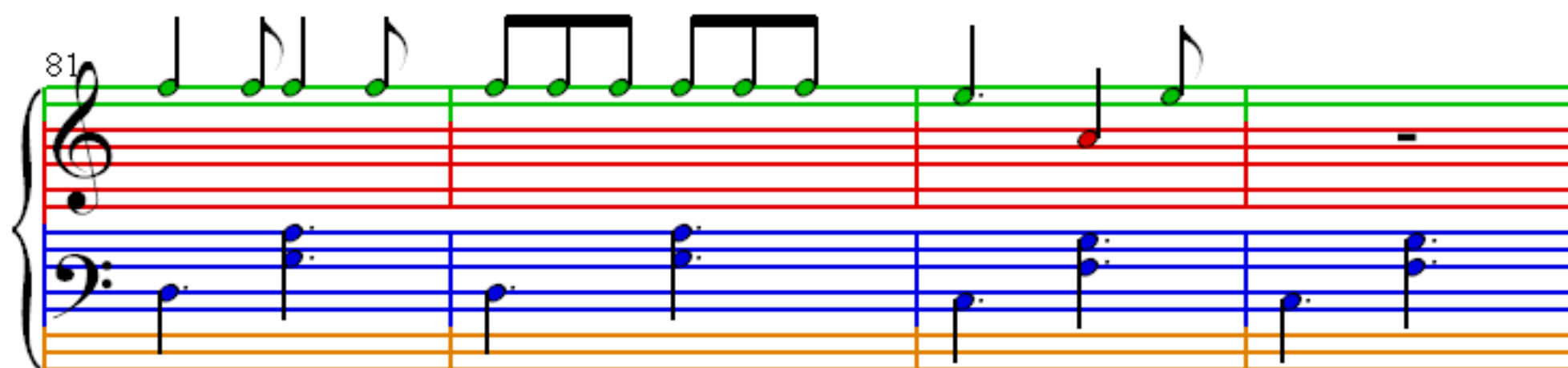
17

Measures 17-20. Measures 17 and 18 contain eighth and quarter notes in the melody. Measures 19 and 20 have whole rests in the melody. The bass line continues with its accompaniment.









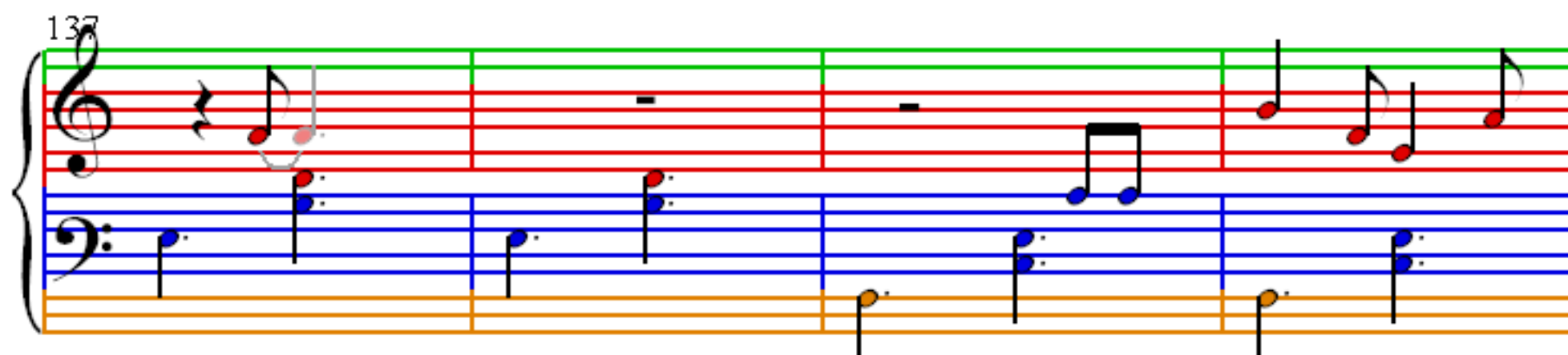
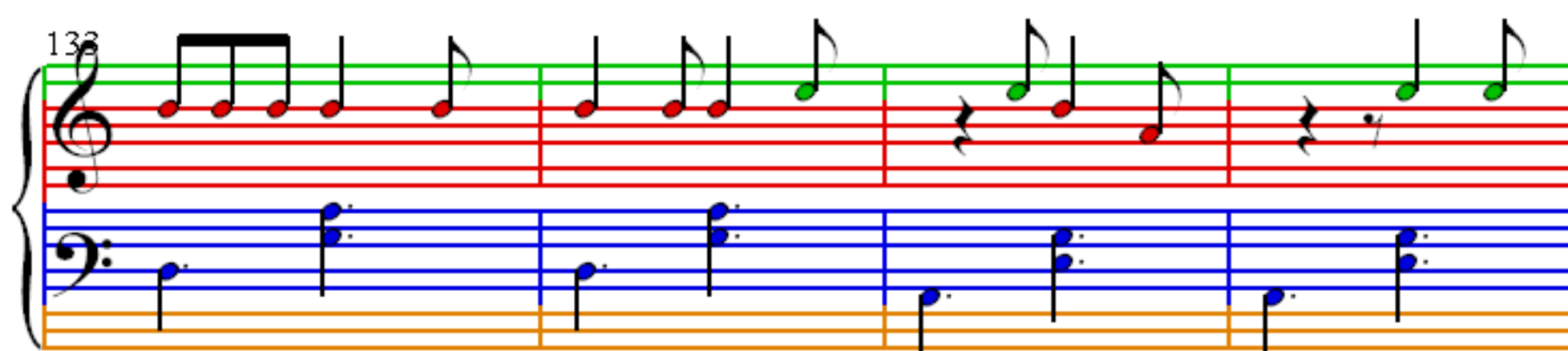
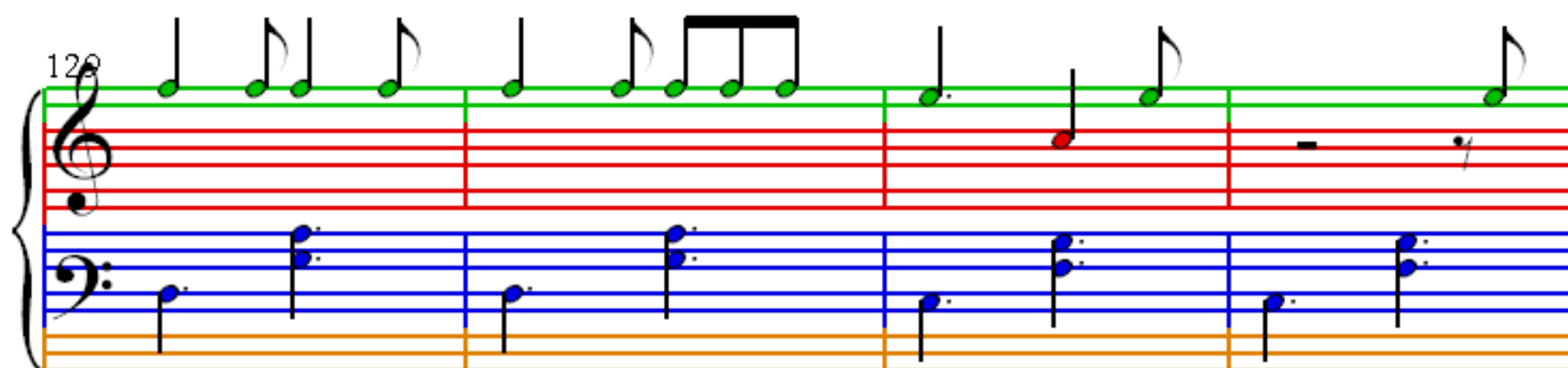
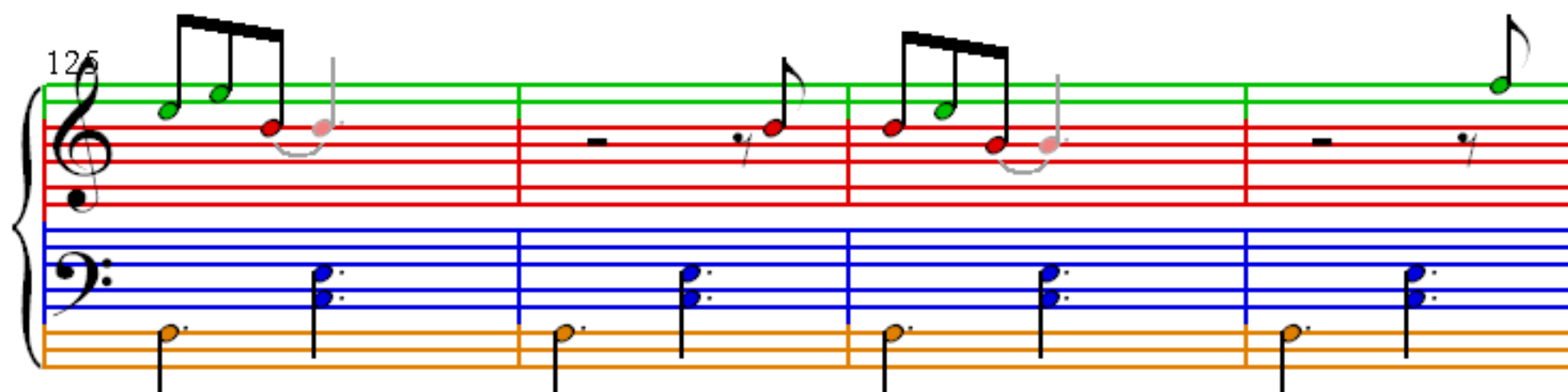
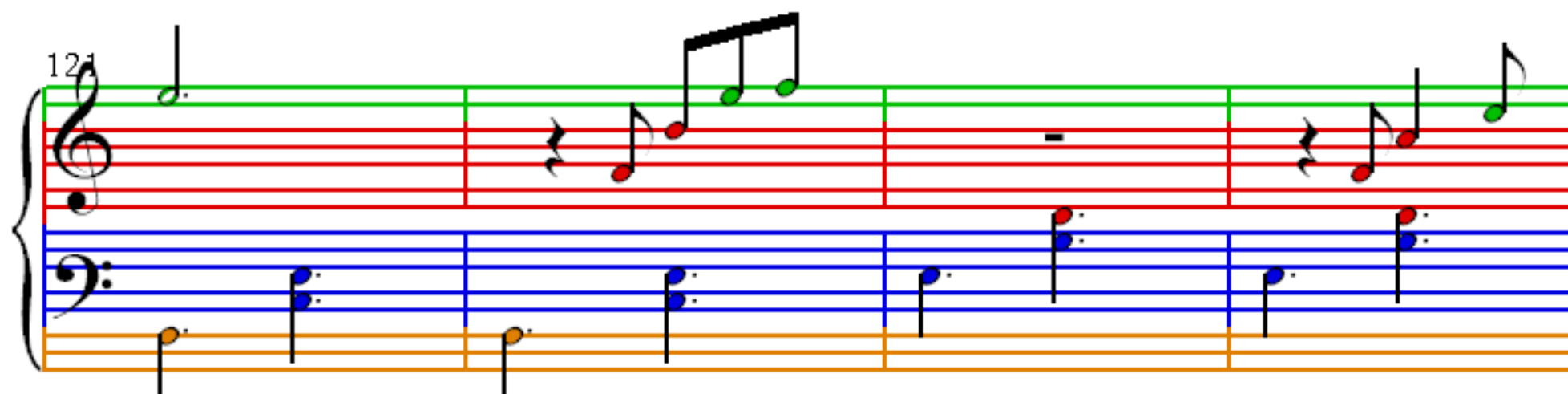
101

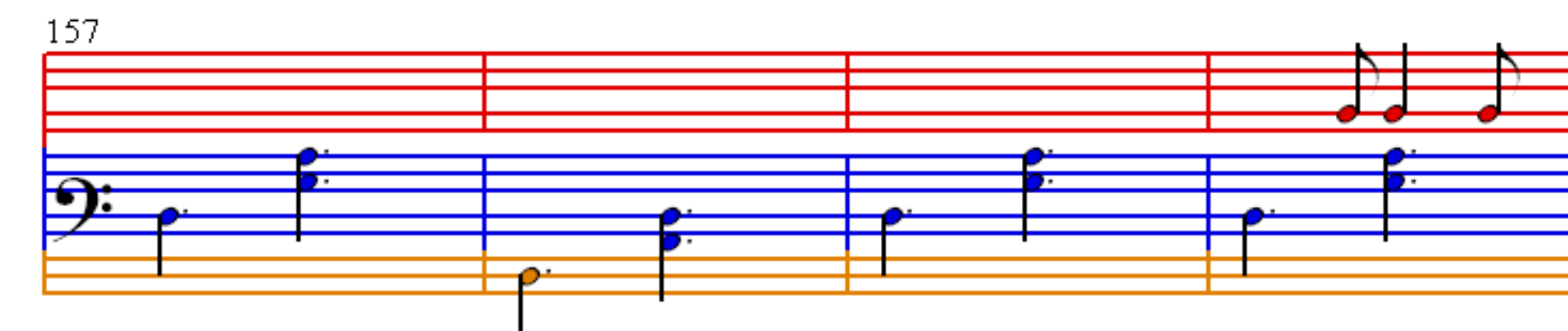
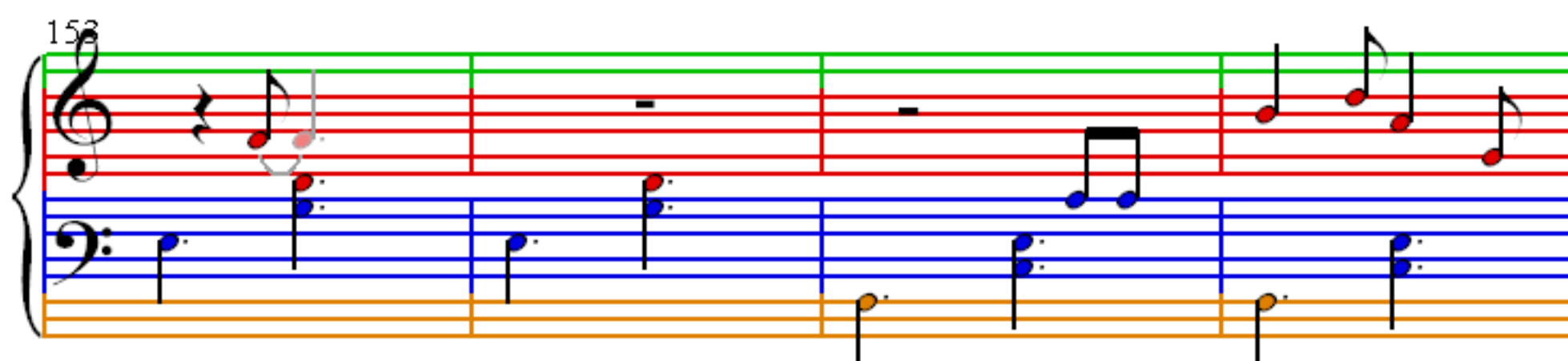
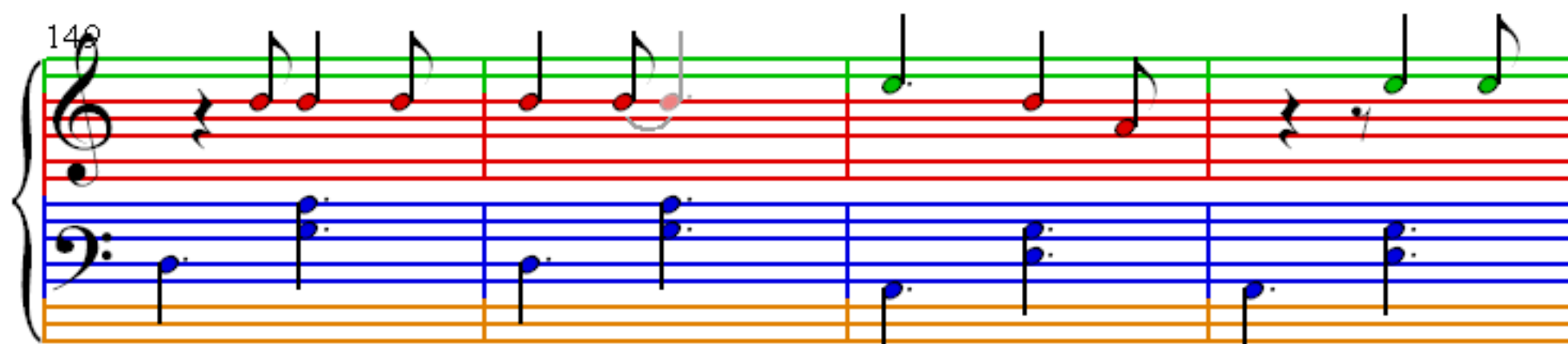
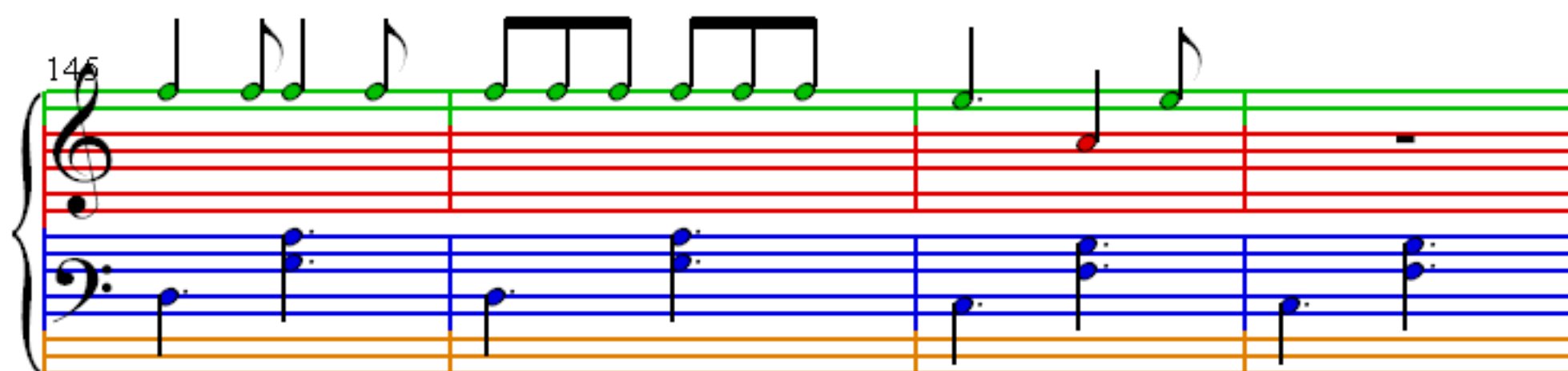
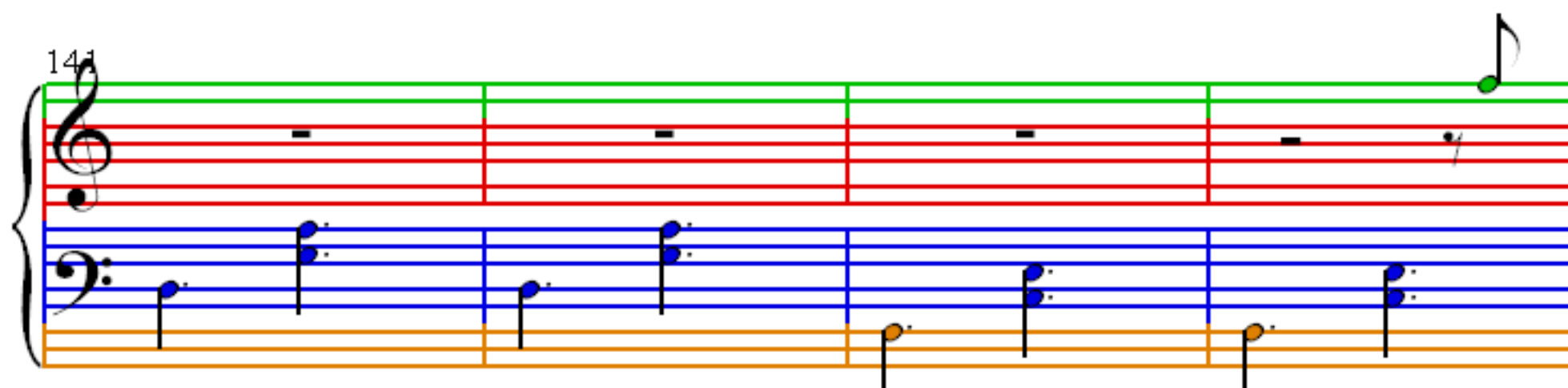
106

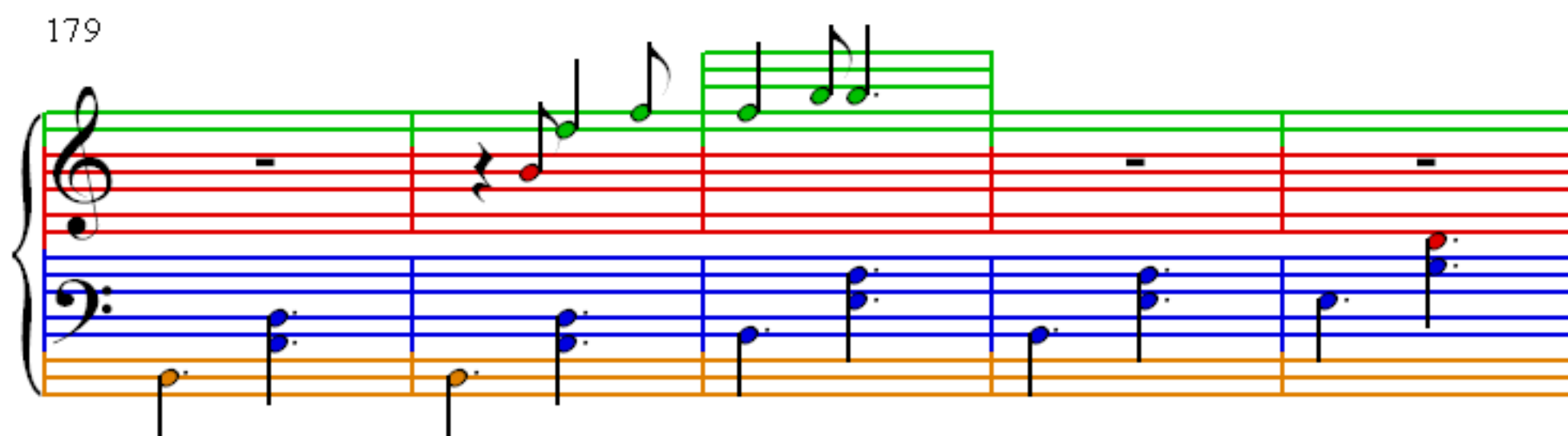
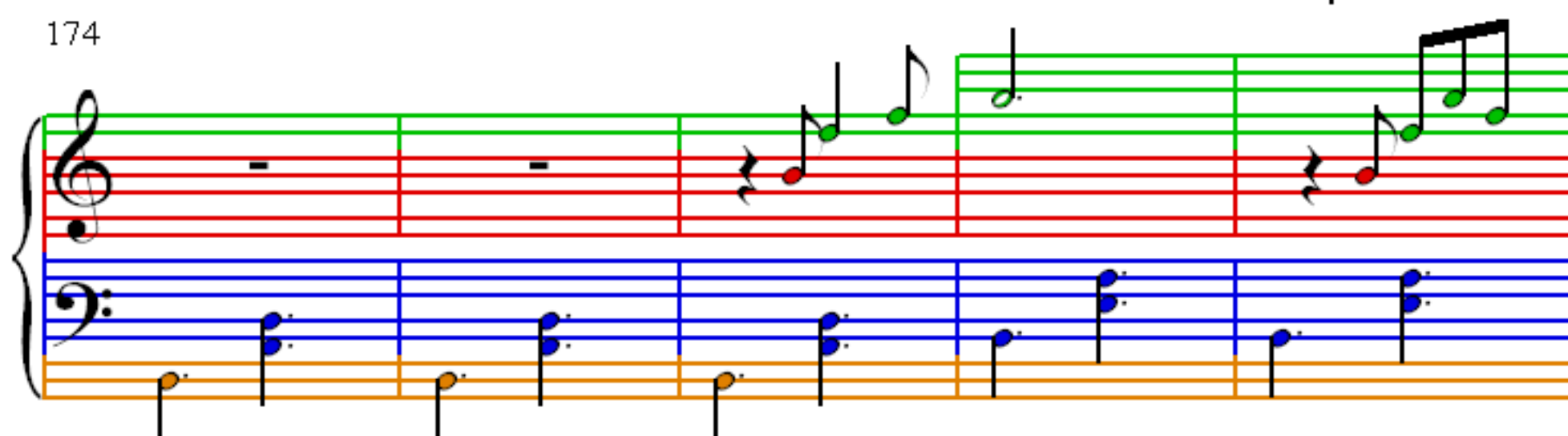
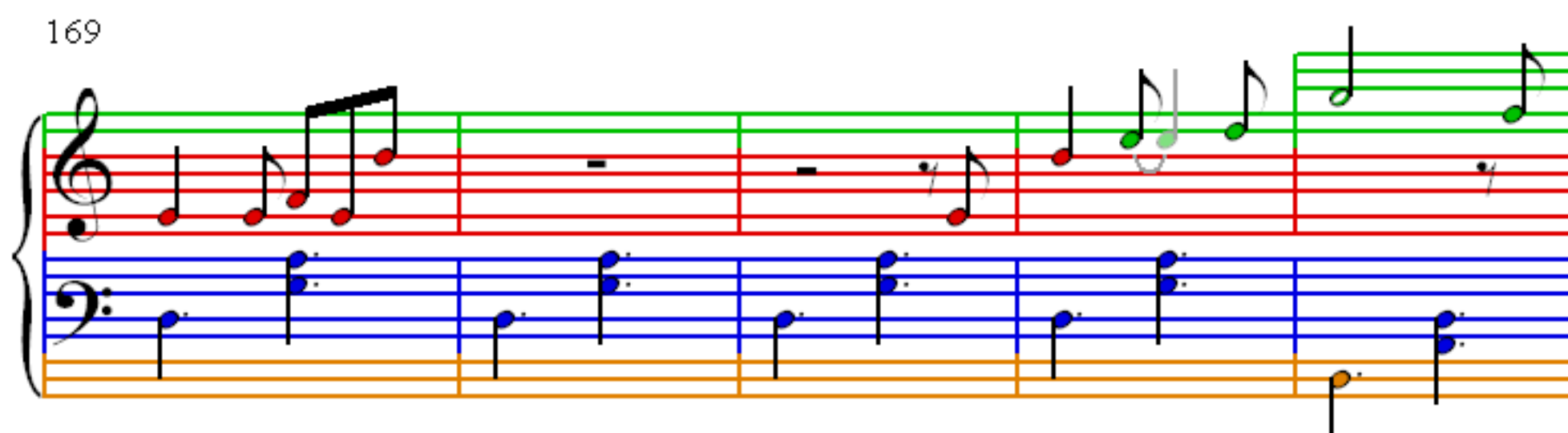
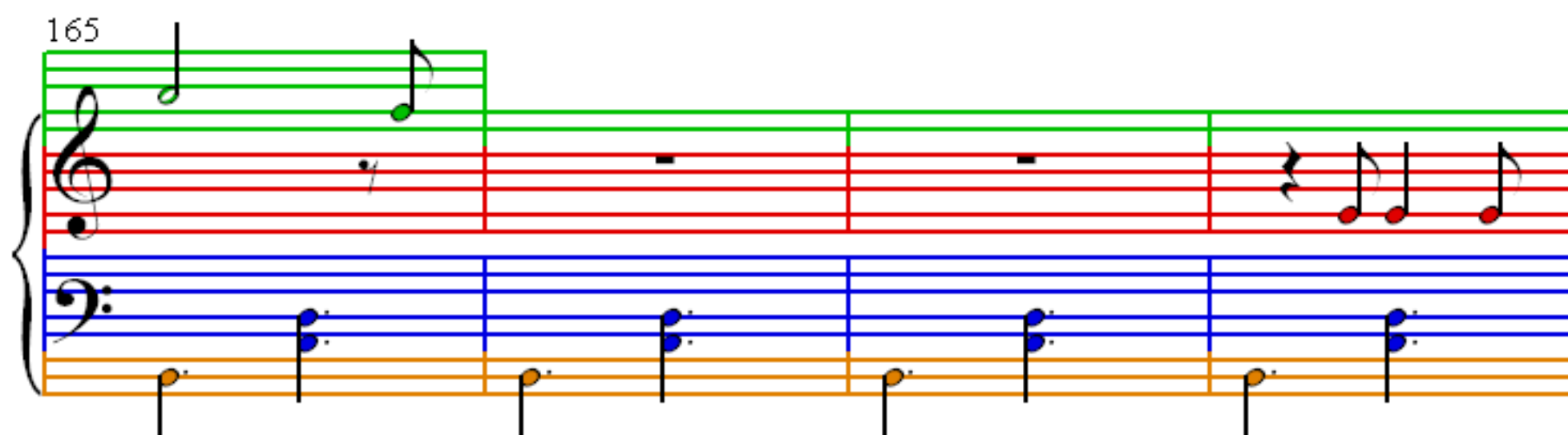
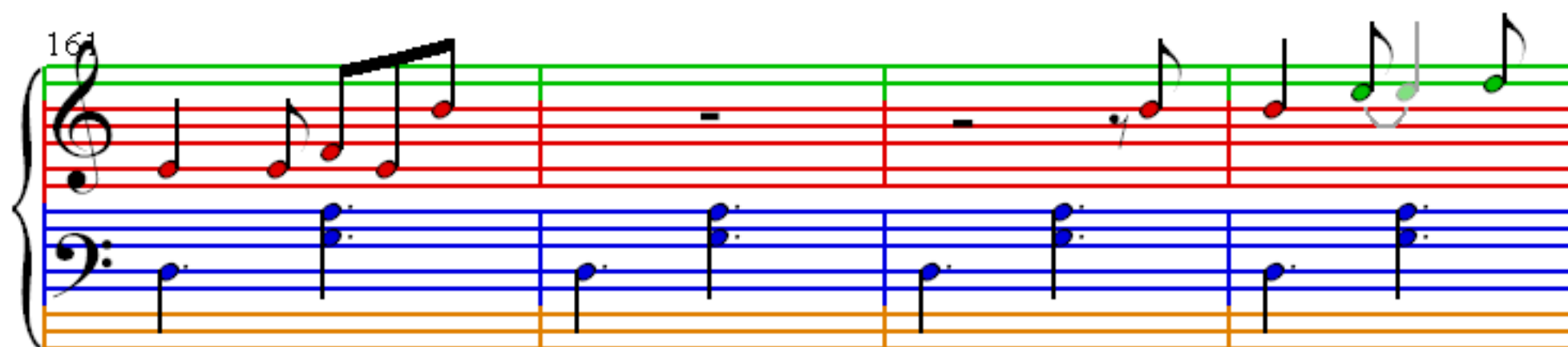
109

113

117







184

189

194

199

204