
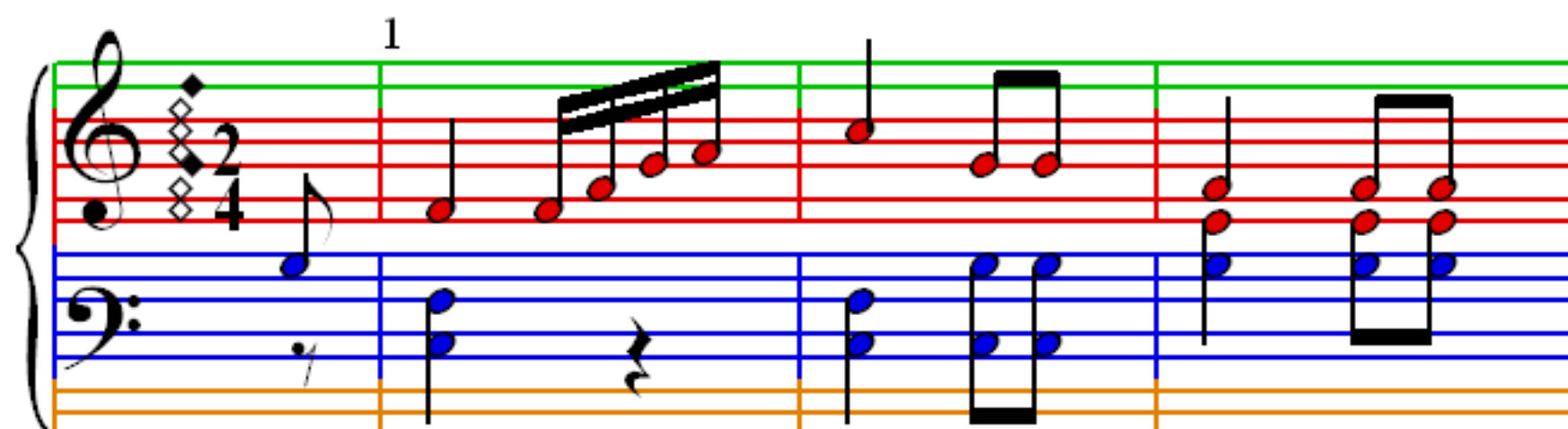


Huntsmen's Chorus

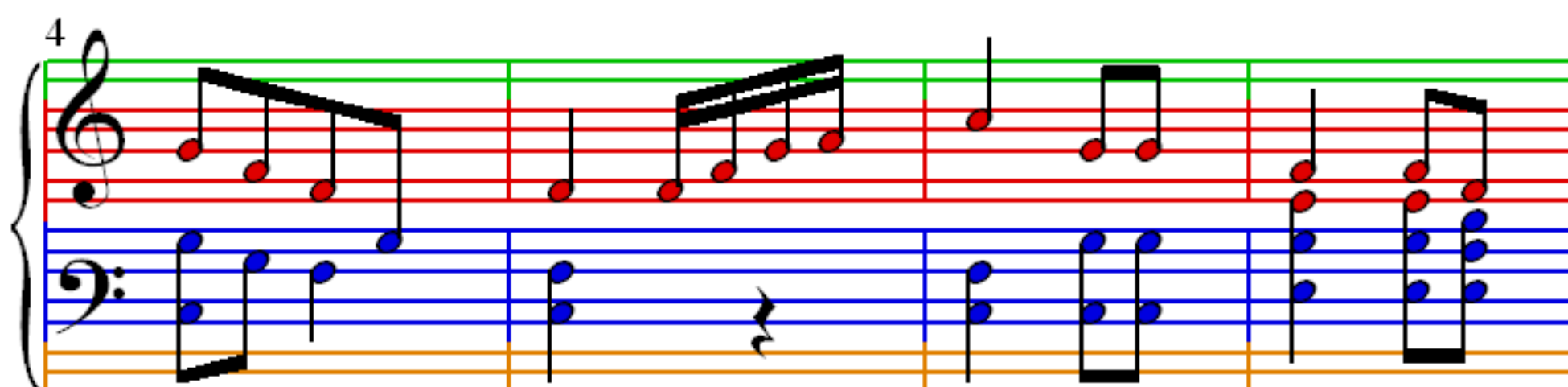
Carl Maria von Weber

 = 100

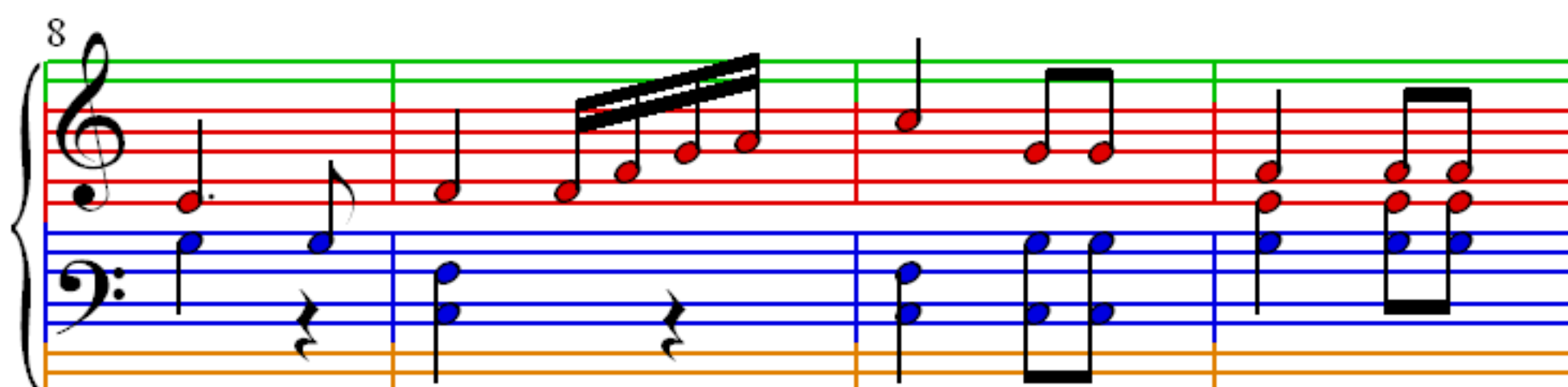
1



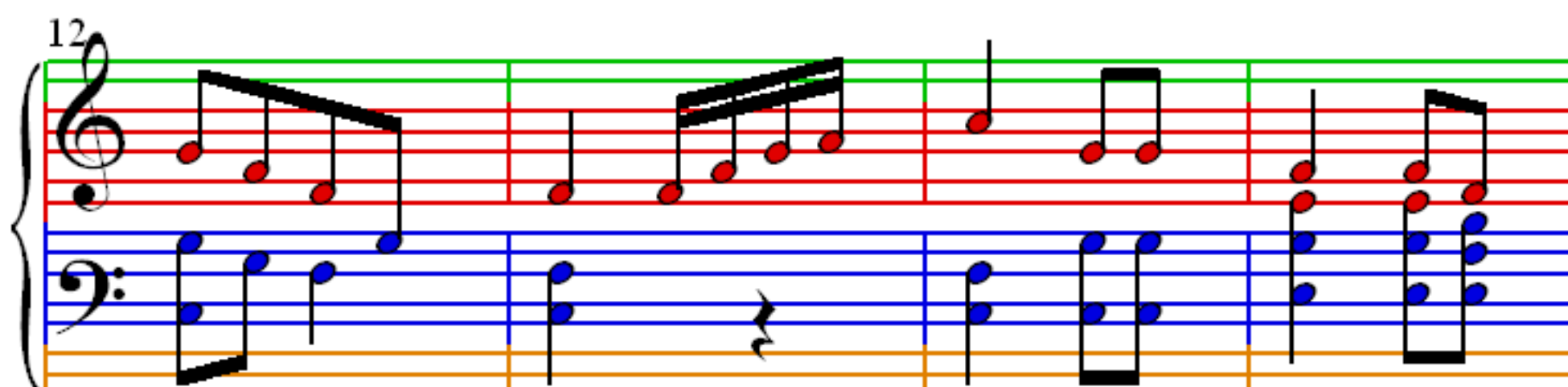
4



8



12



16

Measures 16-19: Treble clef (green line), Bass clef (blue line). Notes are red in treble and blue in bass. Measure 16: Treble has a dotted quarter note, Bass has a dotted quarter note. Measure 17: Treble has a quarter note, Bass has a quarter note. Measure 18: Treble has a quarter note, Bass has a quarter note. Measure 19: Treble has a quarter note, Bass has a quarter note.

20

Measures 20-23: Treble clef (green line), Bass clef (blue line). Notes are red in treble and blue in bass. Measure 20: Treble has a quarter note, Bass has a quarter note. Measure 21: Treble has a quarter note, Bass has a quarter note. Measure 22: Treble has a quarter note, Bass has a quarter note. Measure 23: Treble has a quarter note, Bass has a quarter note.

24

Measures 24-27: Treble clef (green line), Bass clef (blue line). Notes are red in treble and blue in bass. Measure 24: Treble has a quarter note, Bass has a quarter note. Measure 25: Treble has a quarter note, Bass has a quarter note. Measure 26: Treble has a quarter note, Bass has a quarter note. Measure 27: Treble has a quarter note, Bass has a quarter note.

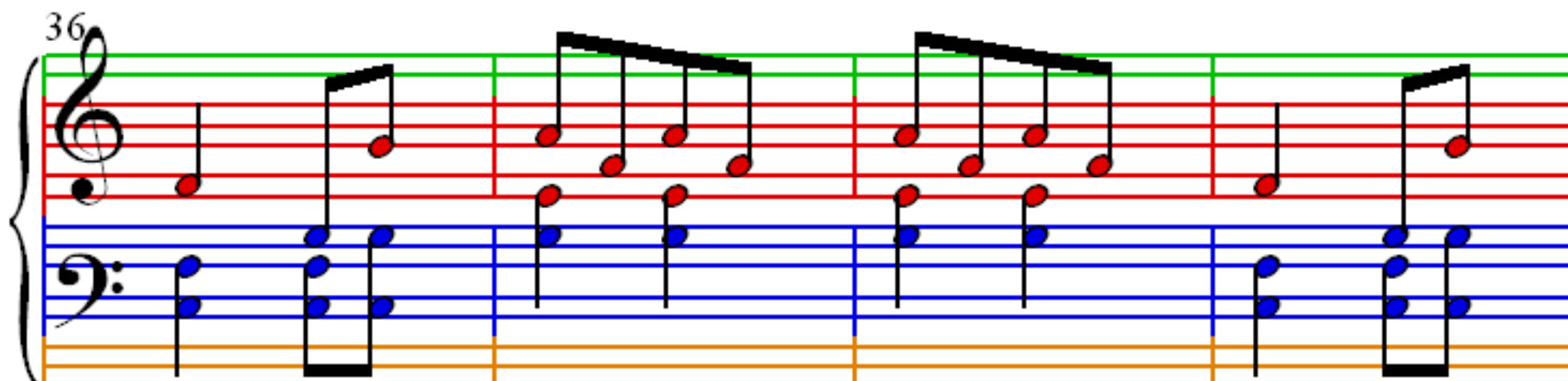
28

Measures 28-31: Treble clef (green line), Bass clef (blue line). Notes are red in treble and blue in bass. Measure 28: Treble has a quarter note, Bass has a quarter note. Measure 29: Treble has a quarter note, Bass has a quarter note. Measure 30: Treble has a quarter note, Bass has a quarter note. Measure 31: Treble has a quarter note, Bass has a quarter note.

32



36



40



44

