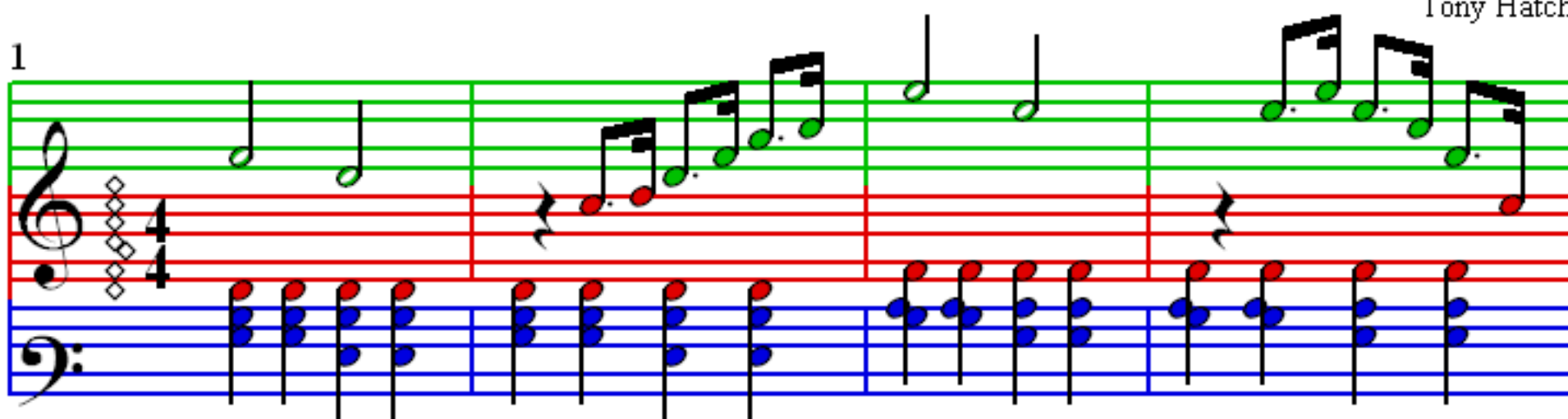
 = 110

# Neighbours

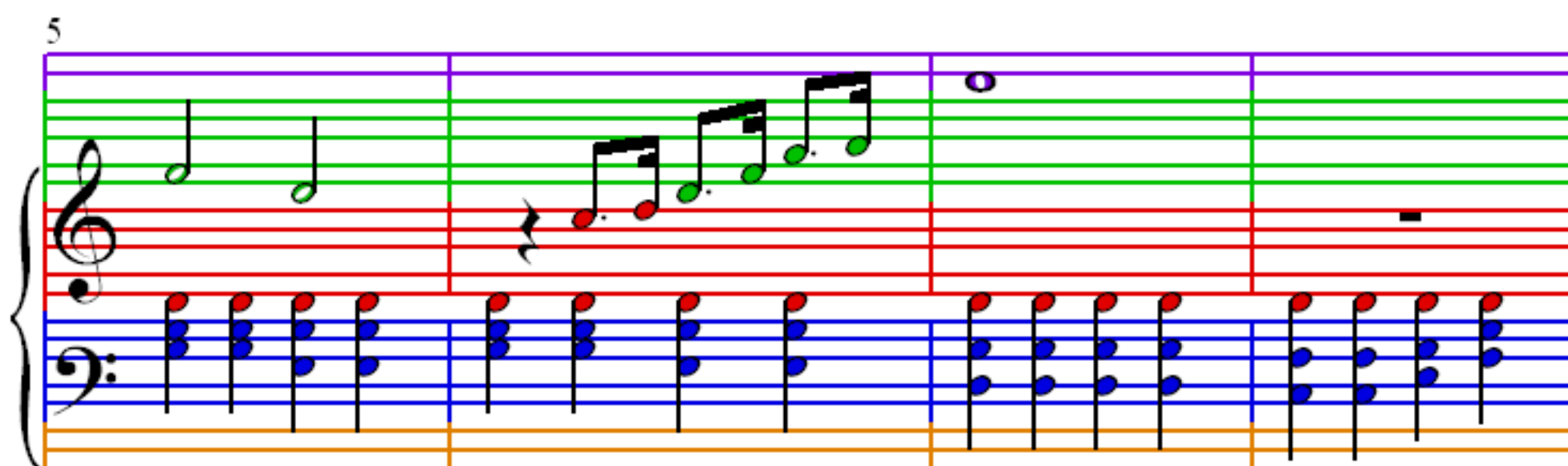
Tony Hatch

1




Measures 1-4 of the piece. The music is in 4/4 time. The treble clef staff has a key signature of one flat (Bb). The bass clef staff has a key signature of one flat (Bb). The melody in the treble clef starts with a quarter note G4, followed by a quarter note A4, then a quarter note Bb4, and a quarter note C5. The bass clef staff has a steady eighth-note accompaniment pattern: G3, A3, Bb3, C4, D4, E4, F4, G4.

5



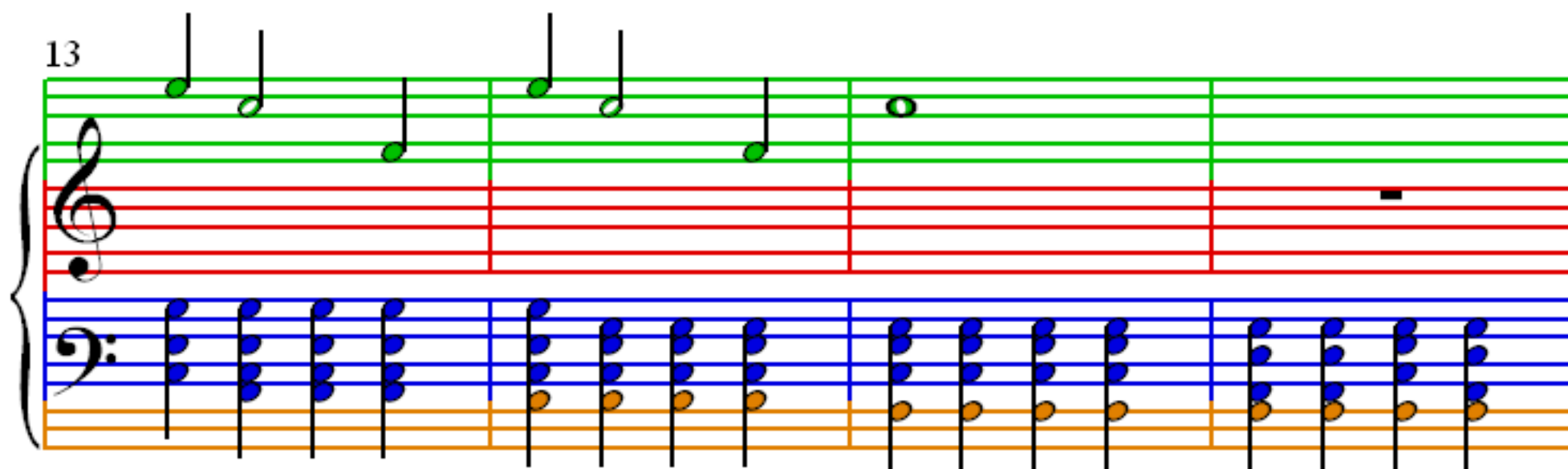
Measures 5-8 of the piece. The melody in the treble clef continues with a quarter note D5, followed by a quarter note E5, then a quarter note F5, and a quarter note G5. The bass clef staff continues with the same eighth-note accompaniment pattern.

9



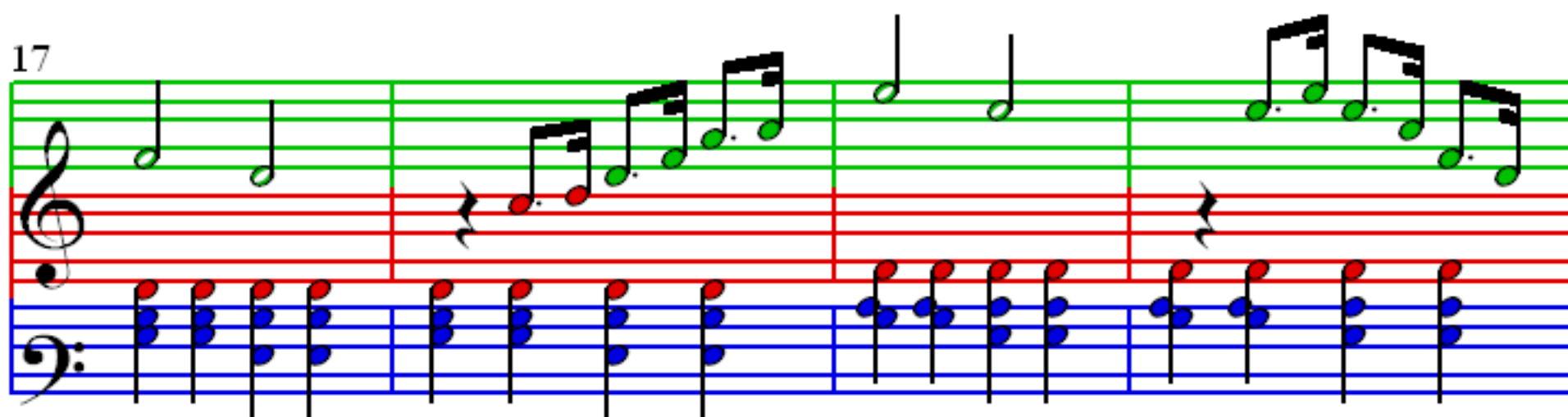
Measures 9-12 of the piece. The melody in the treble clef continues with a quarter note A5, followed by a quarter note Bb5, then a quarter note C6, and a quarter note D6. The bass clef staff continues with the same eighth-note accompaniment pattern.

13

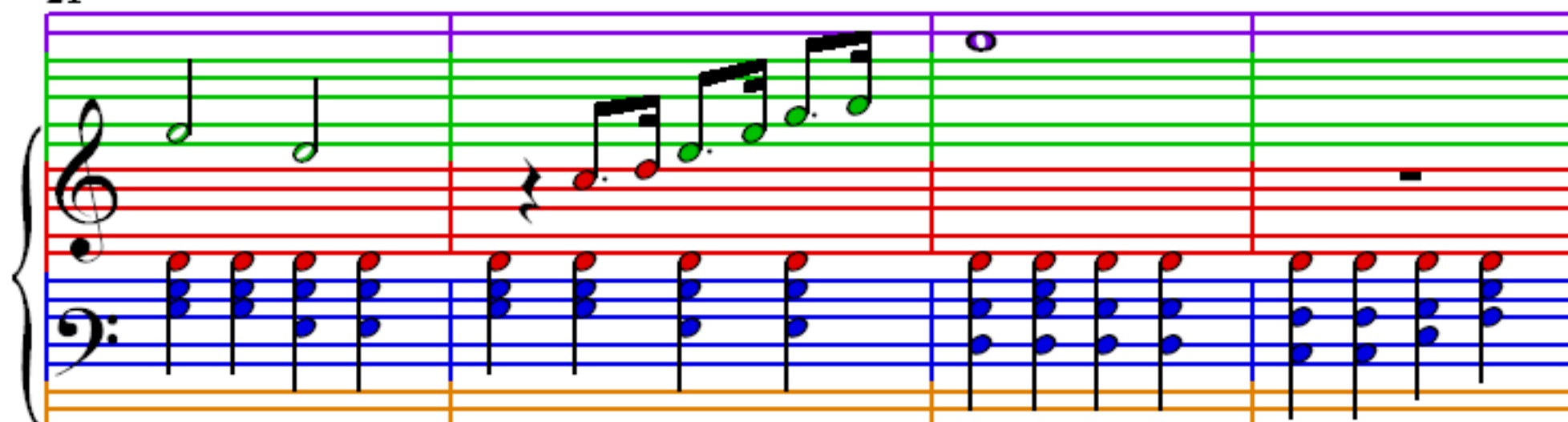


Measures 13-16 of the piece. The melody in the treble clef continues with a quarter note E6, followed by a quarter note F6, then a quarter note G6, and a quarter note A6. The bass clef staff continues with the same eighth-note accompaniment pattern.

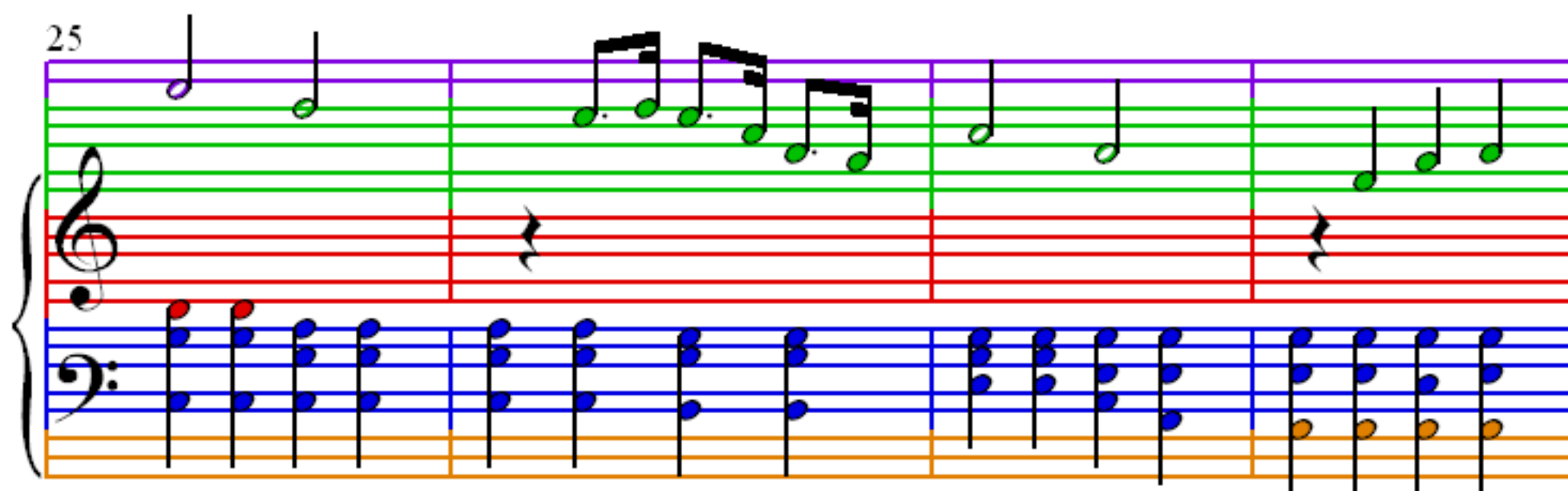
17



21



25



29

