


5th Symphony

Beethoven

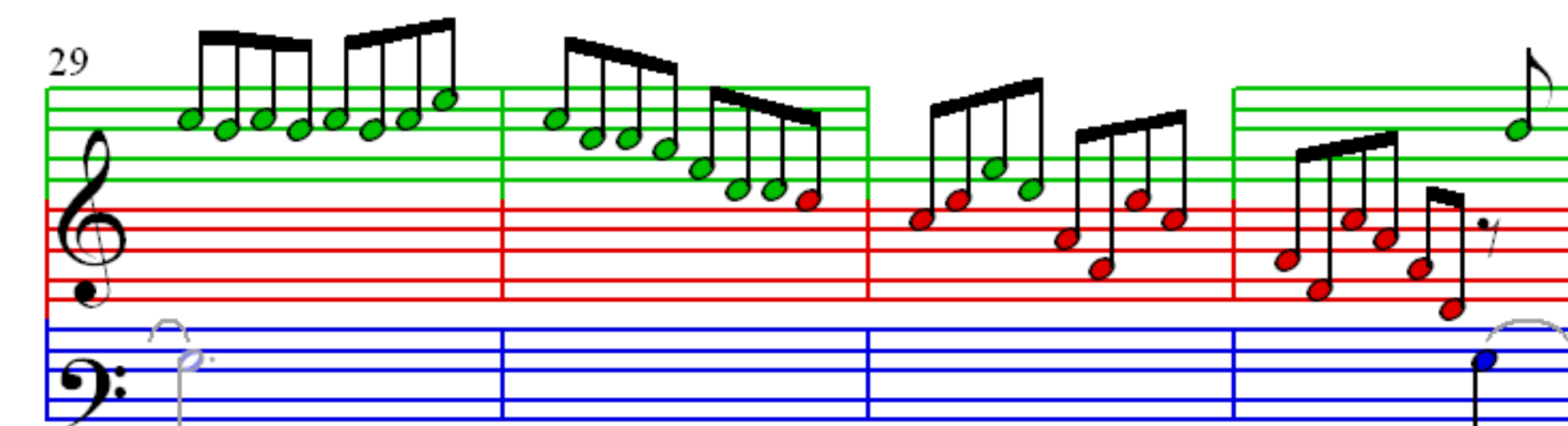
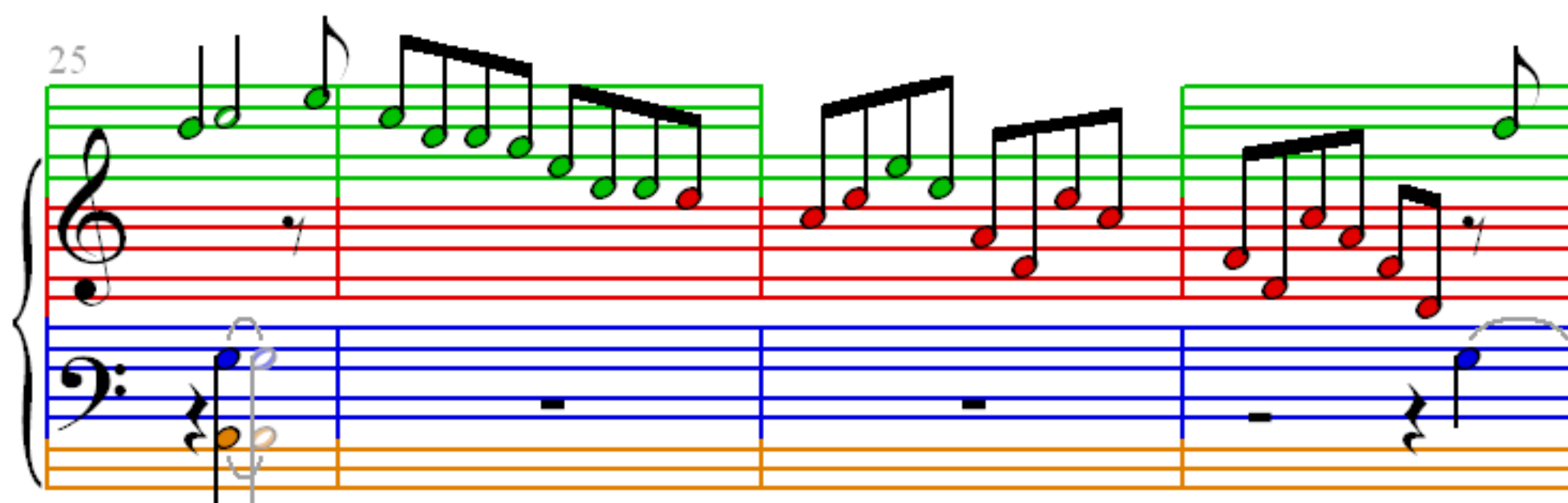
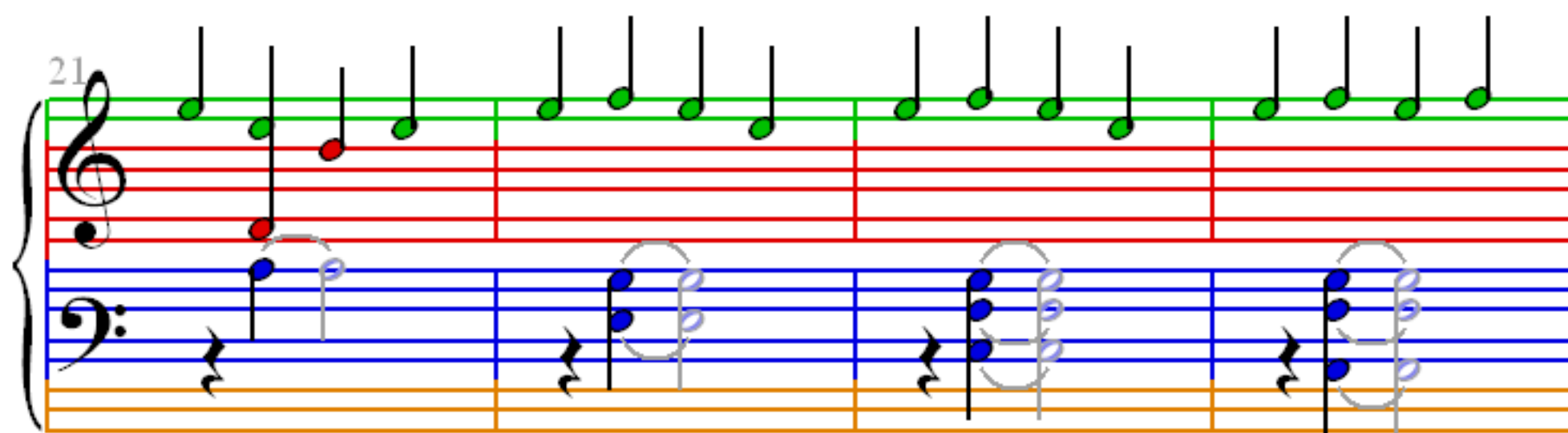
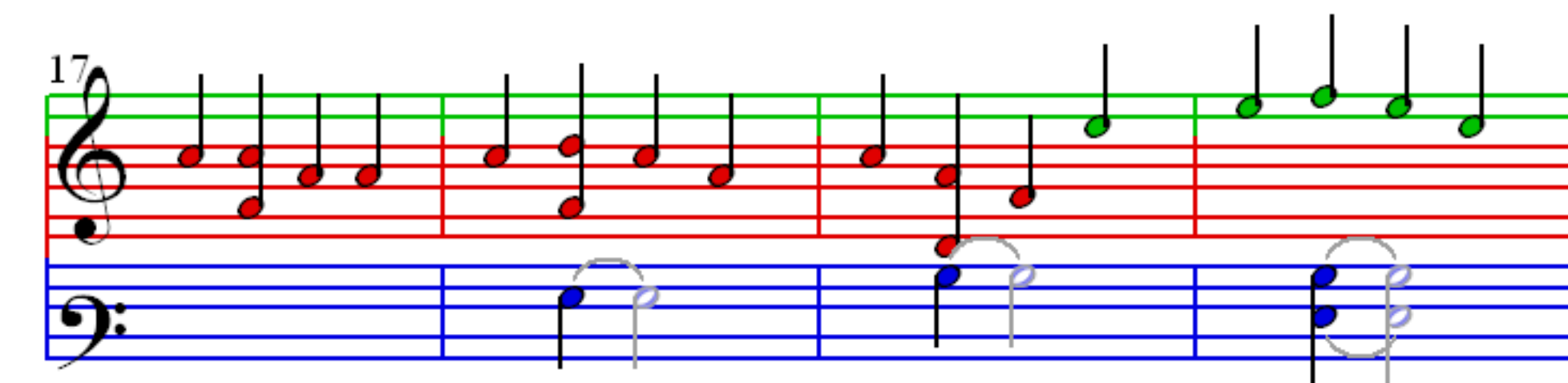
 = 120

1

5

9

13



33

Measures 33-36. Treble clef: Measure 33 has two groups of four eighth notes (green). Measure 34 has two groups of four eighth notes (green). Measure 35 has a half note (green) and a half note (purple). Measure 36 has a half note (green). Bass clef: Measure 33 has a half note (purple). Measure 34 has a half note (blue). Measure 35 has a half note (blue) and a half note (purple). Measure 36 has a half note (blue) and a half note (purple).

37

Measures 37-41. Treble clef: Measure 37 has a half note (green). Measure 38 has a half note (green). Measure 39 has a half note (green). Measure 40 has a half note (green). Measure 41 has a half note (green). Bass clef: Measure 37 has a half note (blue). Measure 38 has a half note (blue). Measure 39 has a half note (blue). Measure 40 has a half note (blue). Measure 41 has a half note (blue).

42

Measures 42-46. Treble clef: Measure 42 has a half note (purple). Measure 43 has a half note (green). Measure 44 has a half note (green). Measure 45 has a half note (green). Measure 46 has a half note (green). Bass clef: Measure 42 has a half note (blue). Measure 43 has a half note (blue). Measure 44 has a half note (blue). Measure 45 has a half note (blue). Measure 46 has a half note (blue).