

Eleanor Rigby

Beatles

1 = 130

5

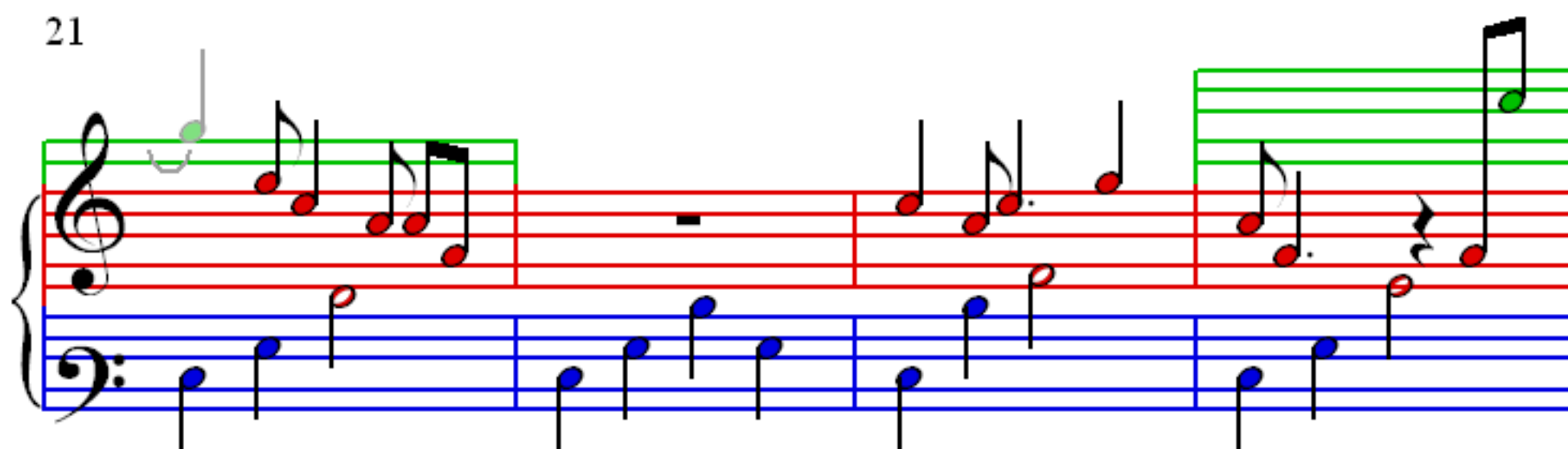
9

13

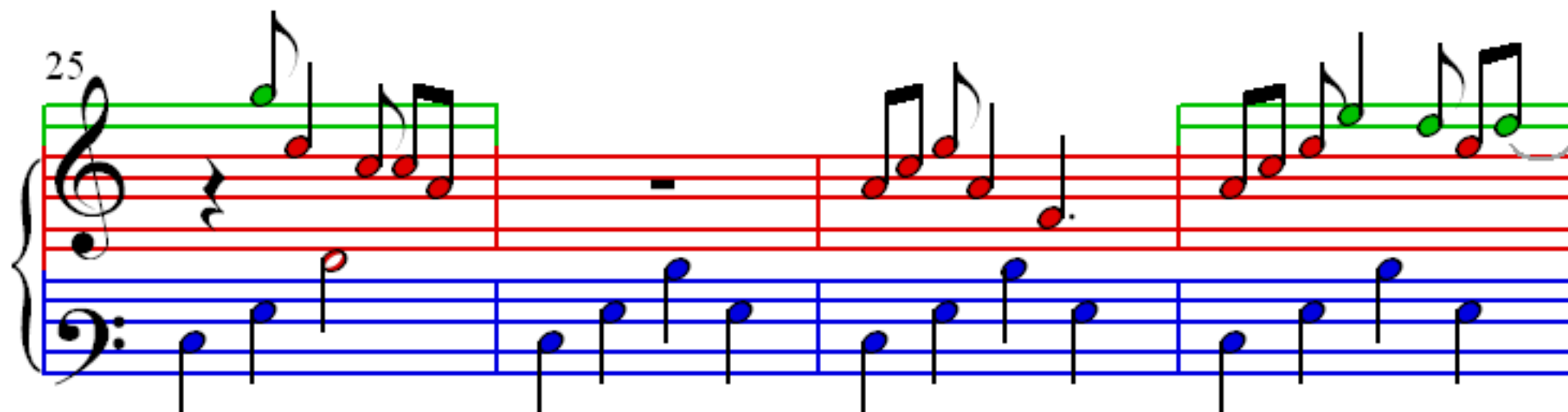
17

This musical score for 'Eleanor Rigby' by The Beatles is presented in a system of five staves. Each staff consists of a treble and bass clef joined by a brace. The treble clef staves are highlighted with a green background, and the bass clef staves with a blue background. The music is in 4/4 time, indicated by a '4' over a vertical line. The tempo is marked as 130 beats per minute. The score is divided into measures by vertical bar lines. Measures 1-4 are on the first staff, measures 5-8 on the second, measures 9-12 on the third, measures 13-16 on the fourth, and measures 17-19 on the fifth. The melody in the treble clef features a mix of eighth and sixteenth notes, with some notes highlighted in green. The bass clef accompaniment consists of a steady eighth-note pattern. The key signature is one flat (B-flat major or D minor).

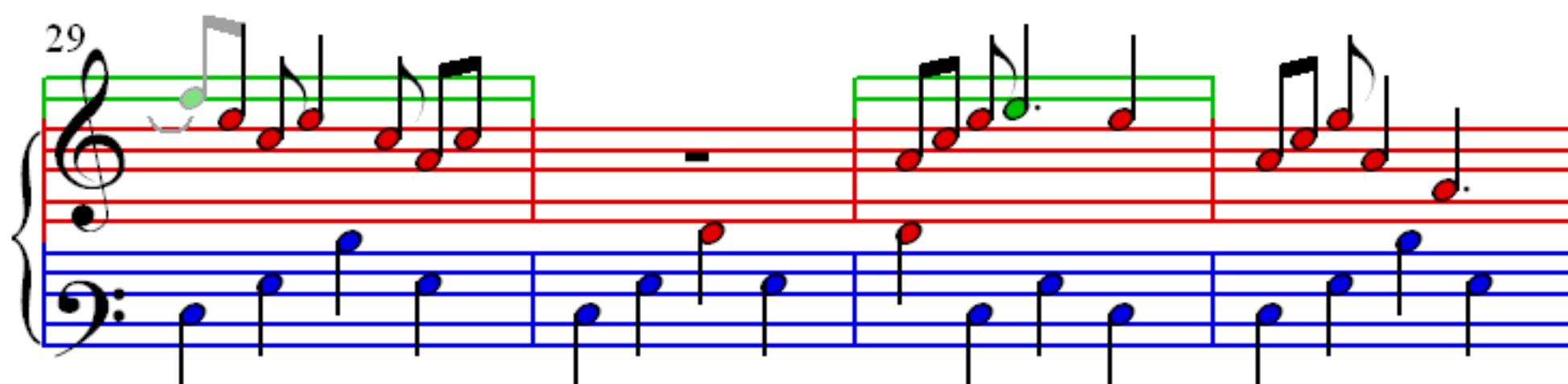
21



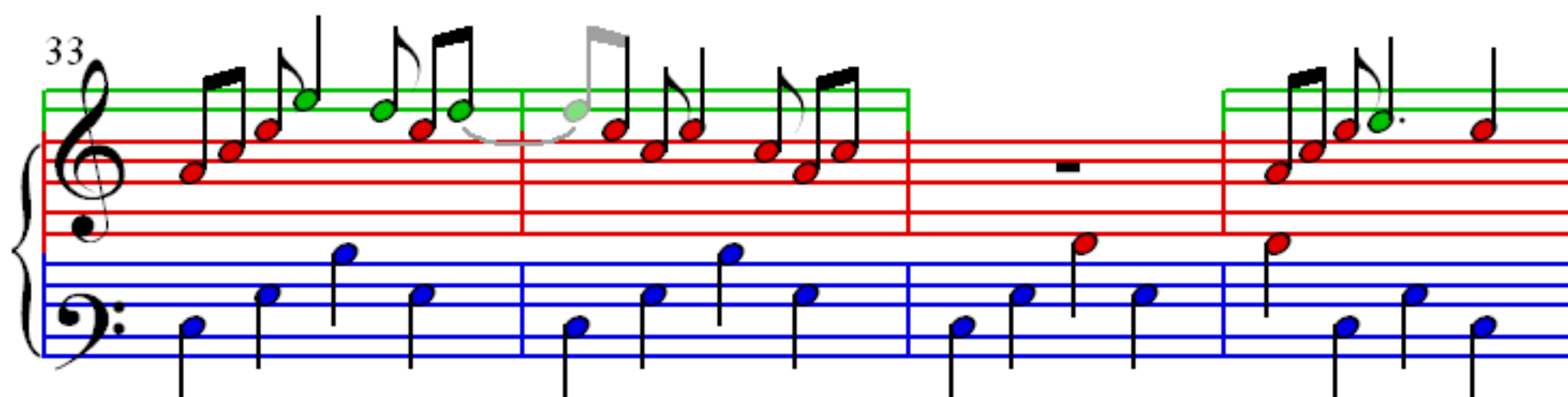
25



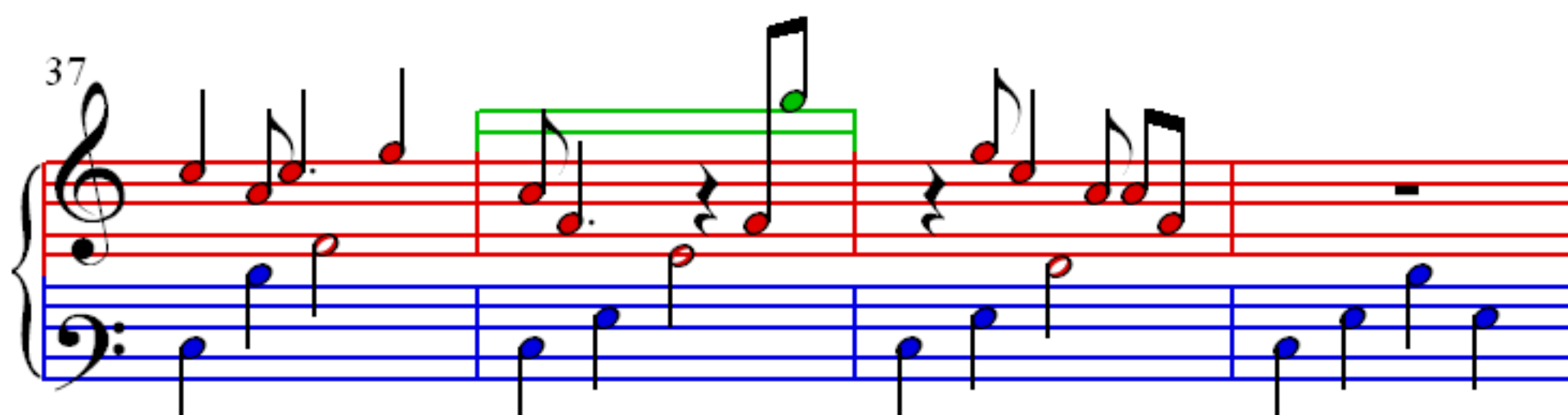
29



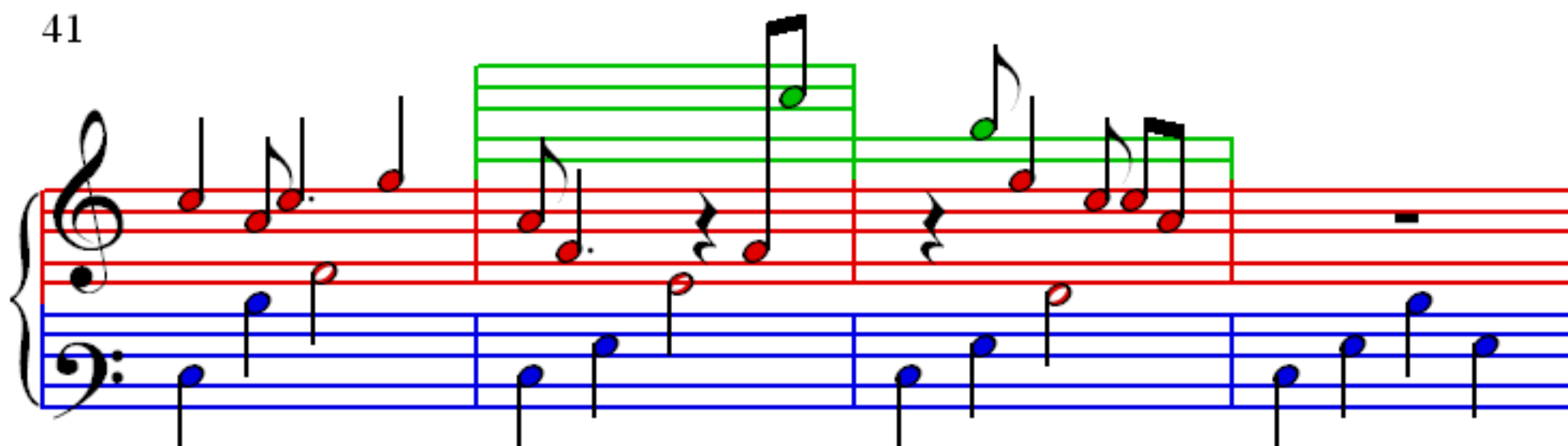
33



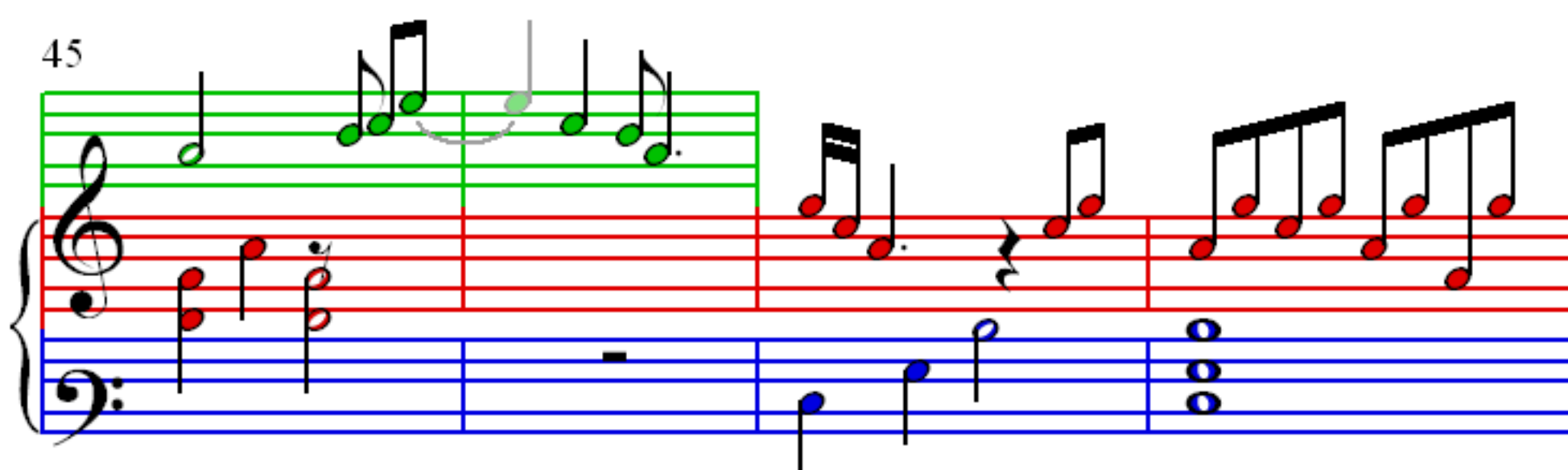
37



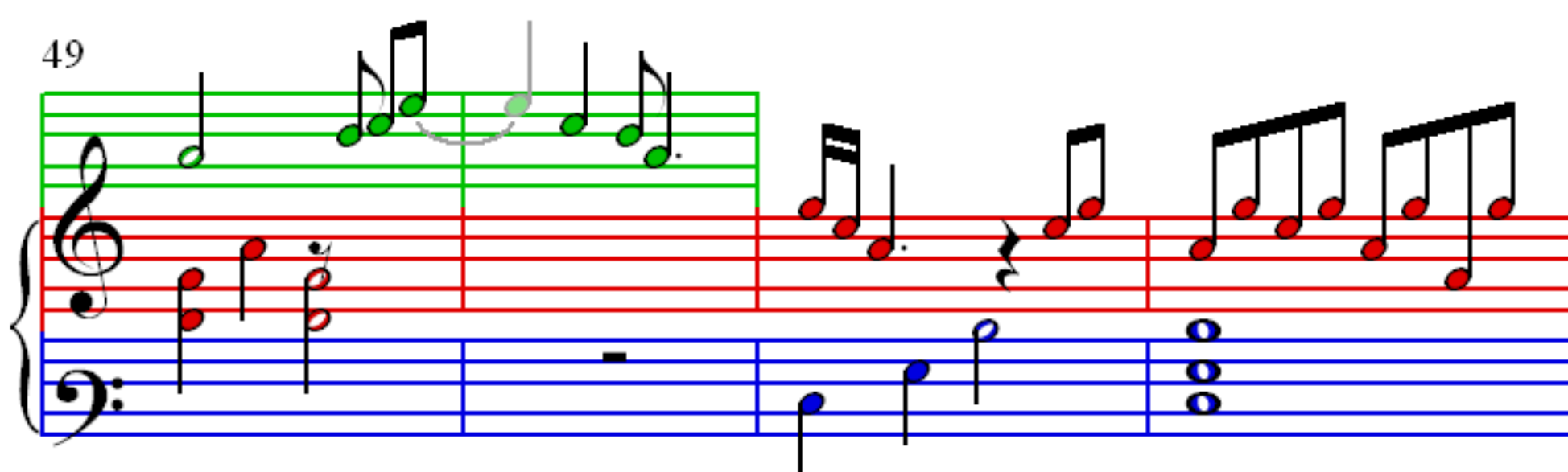
41



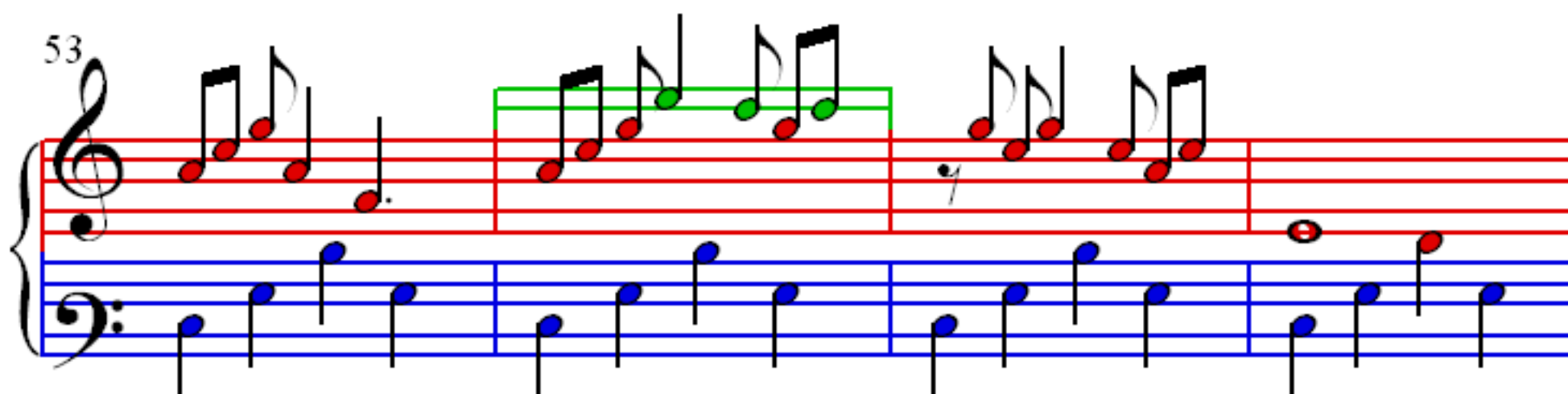
45



49



53



57

Measures 57-60. Treble clef: 57 (eighth notes), 58 (eighth notes), 59 (eighth notes), 60 (eighth notes). Bass clef: 57 (eighth notes), 58 (eighth notes), 59 (eighth notes), 60 (eighth notes).

61

Measures 61-64. Treble clef: 61 (rest), 62 (eighth notes), 63 (eighth notes), 64 (eighth notes). Bass clef: 61 (eighth notes), 62 (eighth notes), 63 (eighth notes), 64 (eighth notes).

65

Measures 65-68. Treble clef: 65 (eighth notes), 66 (eighth notes), 67 (eighth notes), 68 (eighth notes). Bass clef: 65 (eighth notes), 66 (eighth notes), 67 (eighth notes), 68 (eighth notes).

69

Measures 69-71. Treble clef: 69 (eighth notes), 70 (eighth notes), 71 (eighth notes). Bass clef: 69 (eighth notes), 70 (chords), 71 (chords).