

No Bravery

♩ = 83

James Blunt

1

Measures 1-4 of the piece. The music is in 4/4 time. The right hand (treble clef) features a melody of eighth notes, with some notes beamed together. The left hand (bass clef) provides a harmonic accompaniment with eighth notes and some chords. The bottom staff (orange) shows a simple bass line with quarter and eighth notes.

5

Measures 5-8 of the piece. The right hand continues the melody with eighth notes. The left hand has more complex accompaniment, including some beamed eighth notes and chords. The bottom staff (orange) continues the bass line.

9

Measures 9-12 of the piece. The right hand melody continues. The left hand accompaniment features some chords and eighth notes. The bottom staff (orange) has a few longer notes, including a half note.

13

Measures 13-16 of the piece. The right hand melody continues. The left hand accompaniment features some chords and eighth notes. The bottom staff (orange) has a few longer notes, including a half note.

17

This system contains measures 17 through 20. The treble clef staff features a continuous sequence of eighth notes, with red notes on the upper staff and blue notes on the lower staff. The bass clef staff has a single eighth note in measure 17, followed by a pair of beamed eighth notes in measure 18, and then a single eighth note in measures 19 and 20. The piano part consists of a single eighth note in measure 17 and a pair of beamed eighth notes in measure 18, with rests in measures 19 and 20.

21

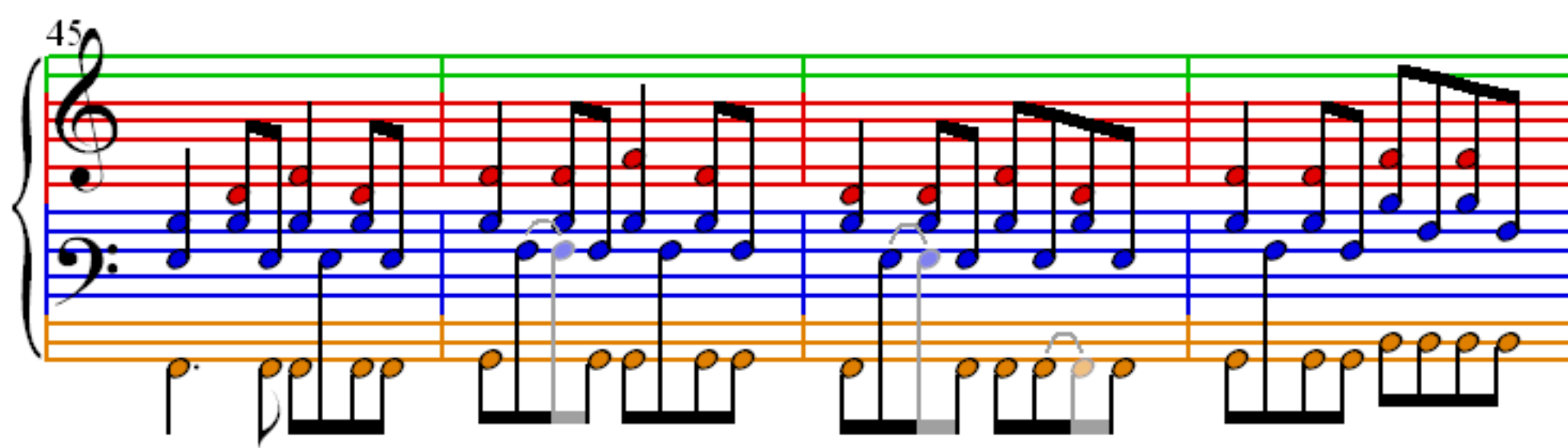
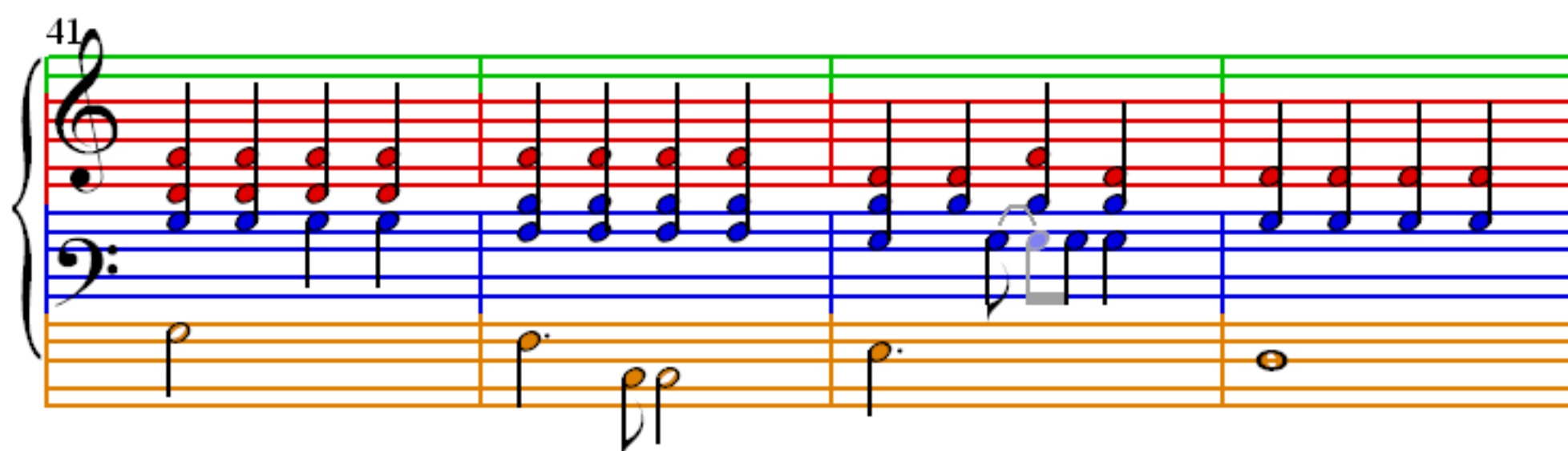
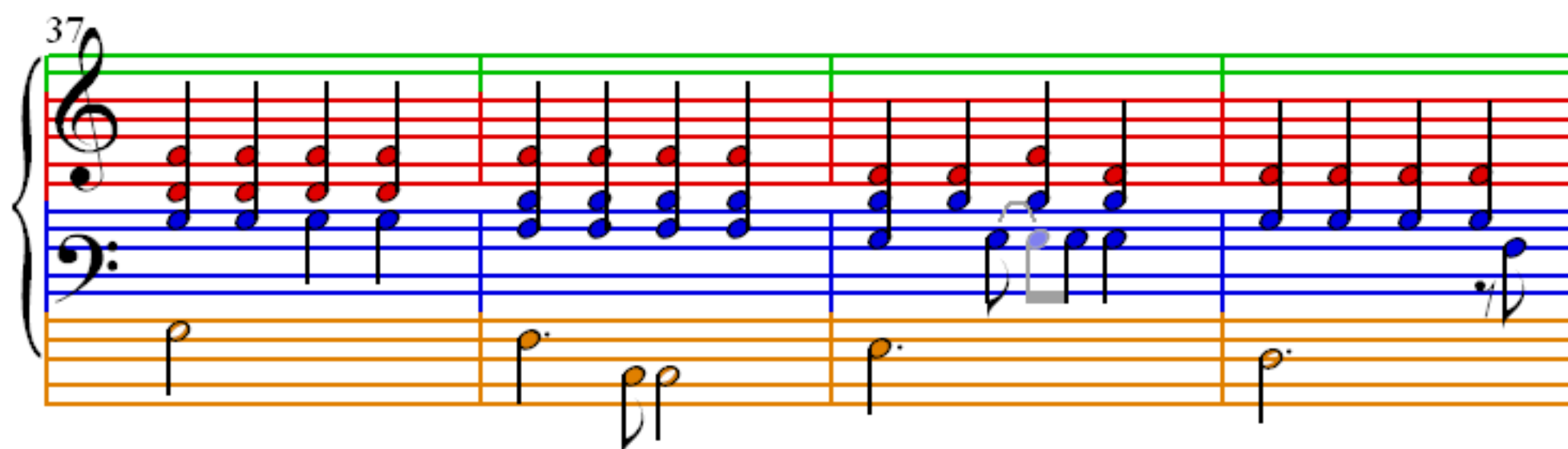
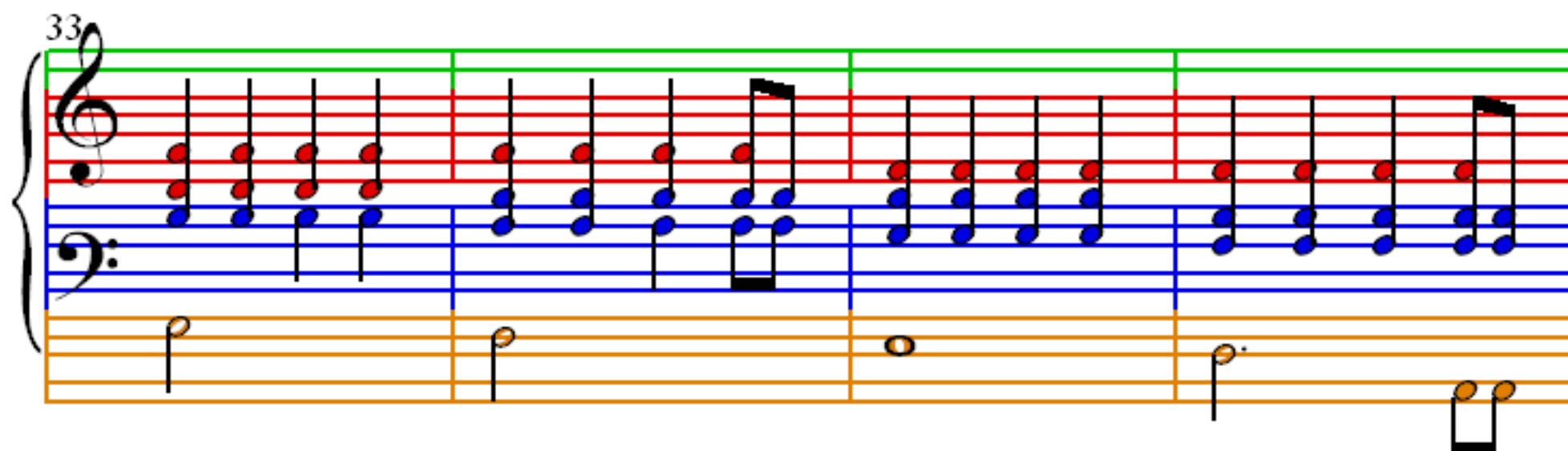
This system contains measures 21 through 24. The treble clef staff continues with eighth notes. The bass clef staff has a single eighth note in measure 21, followed by a pair of beamed eighth notes in measure 22, and then a single eighth note in measures 23 and 24. The piano part has a single eighth note in measure 21, followed by a pair of beamed eighth notes in measure 22, and then a single eighth note in measures 23 and 24.

25

This system contains measures 25 through 28. The treble clef staff continues with eighth notes. The bass clef staff has a pair of beamed eighth notes in measure 25, followed by a pair of beamed eighth notes in measure 26, and then a pair of beamed eighth notes in measures 27 and 28. The piano part has a pair of beamed eighth notes in measure 25, followed by a pair of beamed eighth notes in measure 26, and then a pair of beamed eighth notes in measures 27 and 28.

29

This system contains measures 29 through 32. The treble clef staff continues with eighth notes. The bass clef staff has a single eighth note in measure 29, followed by a pair of beamed eighth notes in measure 30, and then a single eighth note in measures 31 and 32. The piano part has a single eighth note in measure 29, followed by a pair of beamed eighth notes in measure 30, and then a single eighth note in measures 31 and 32.



49

Measures 49-52. Treble and bass staves with red and blue notes. A third staff at the bottom has orange notes.

53

Measures 53-56. Treble and bass staves with red and blue notes. A third staff at the bottom has orange notes.

57

Measures 57-60. Treble and bass staves with red and blue notes. A third staff at the bottom has orange notes. Measures 58-59 show a transition with grey notes.

61

Measures 61-64. Treble and bass staves with red and blue notes. A third staff at the bottom has orange notes. Measures 62-63 show a transition with grey notes.

65

69

73

77

81

85

86