

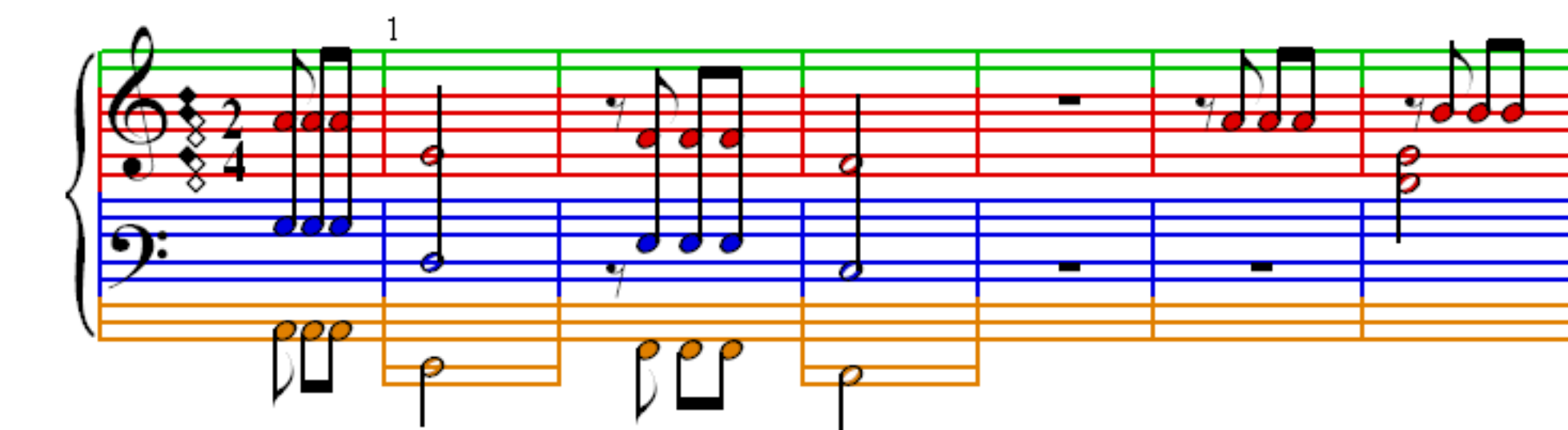
5th. Symphony

C minor Op.67

Beethoven

♩ = 120

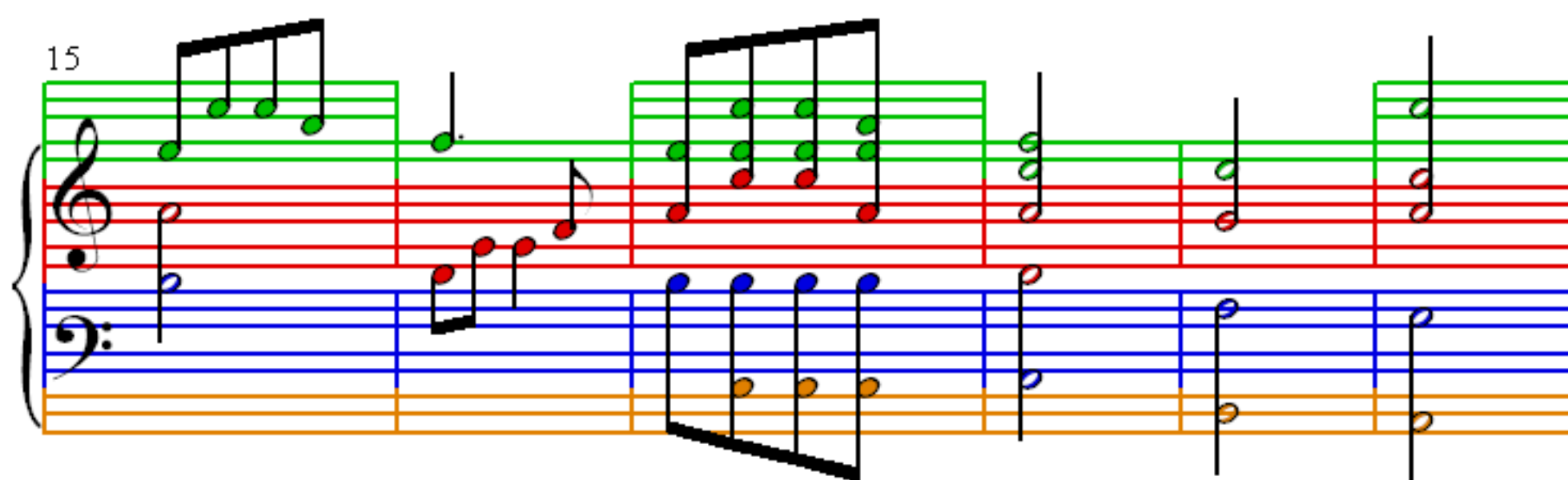
1



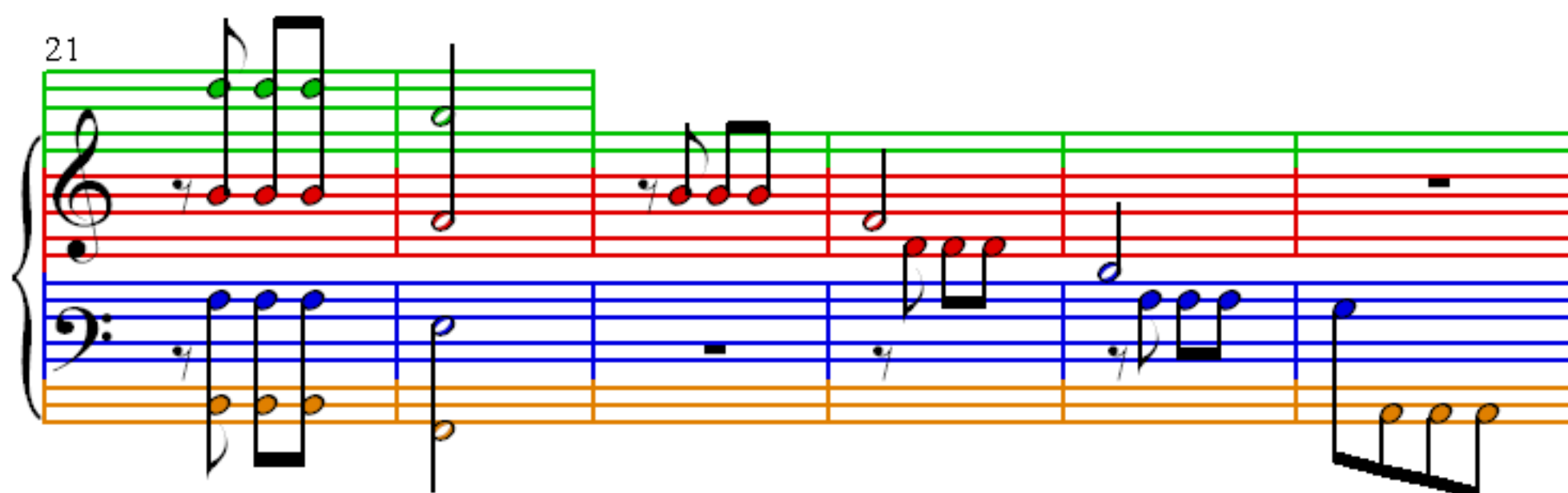
7



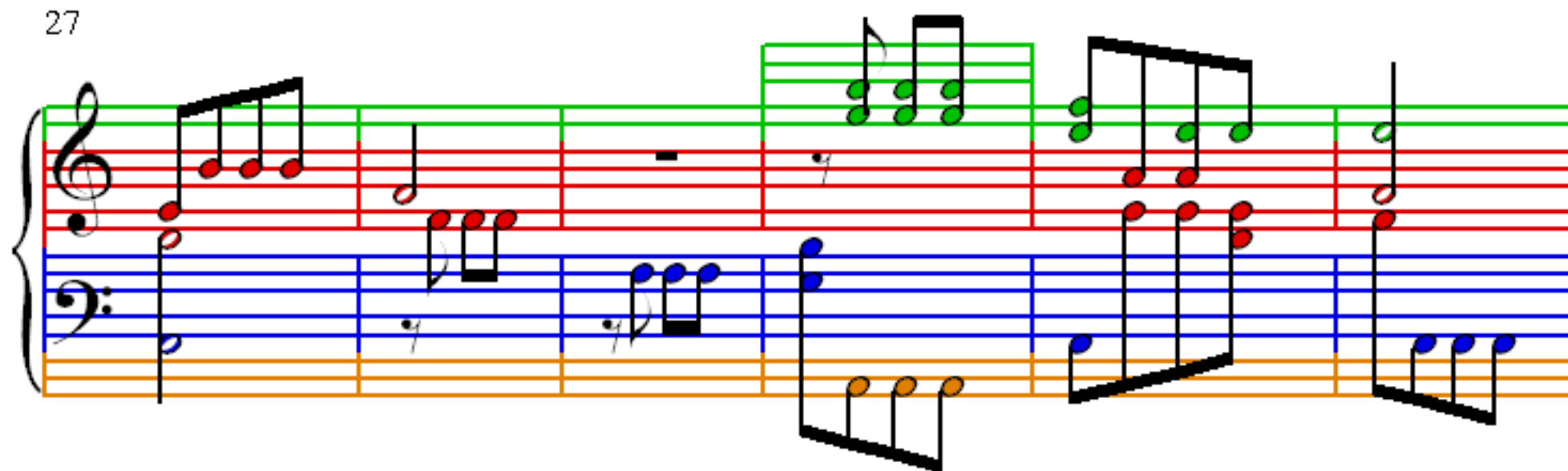
15



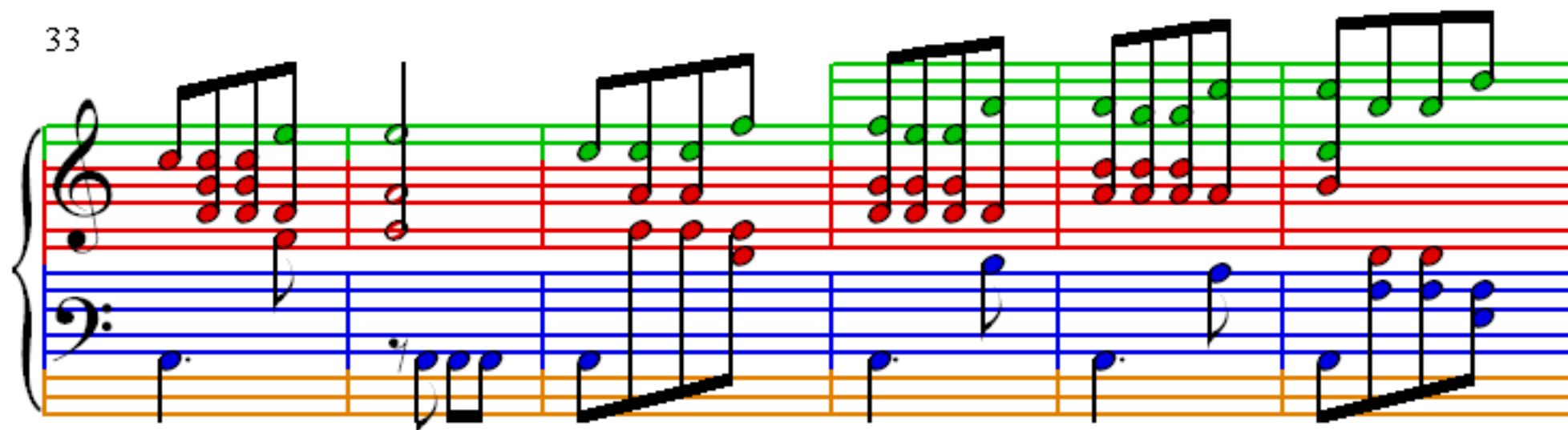
21



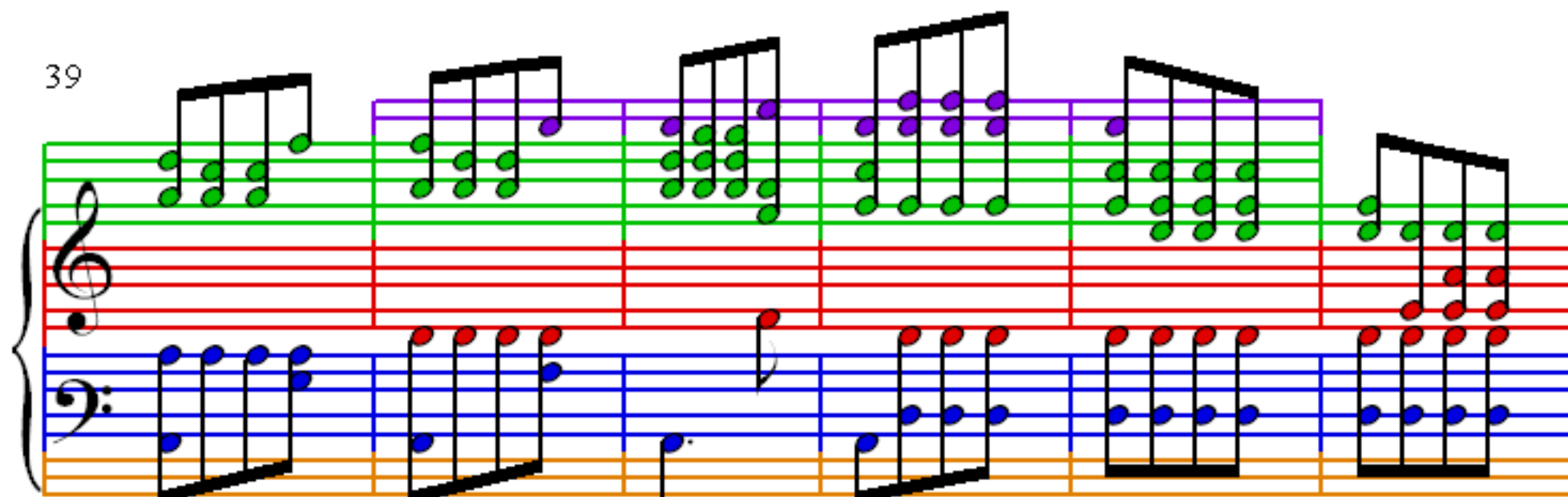
27



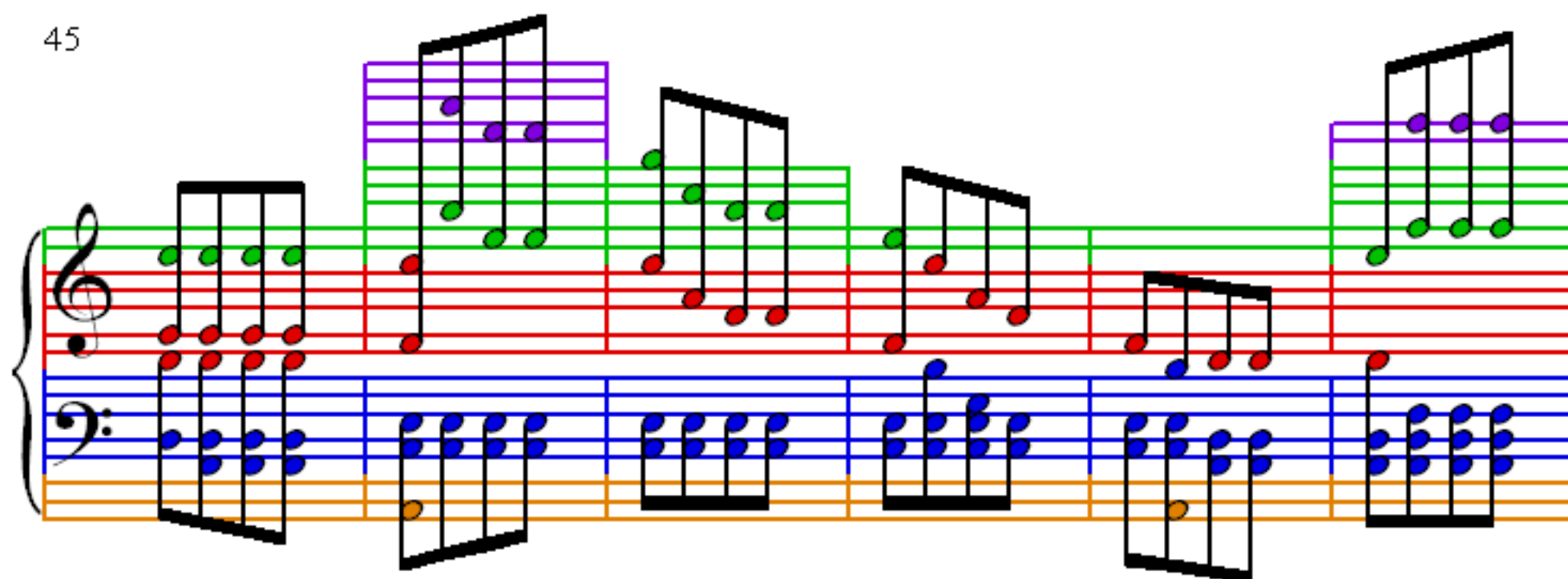
33



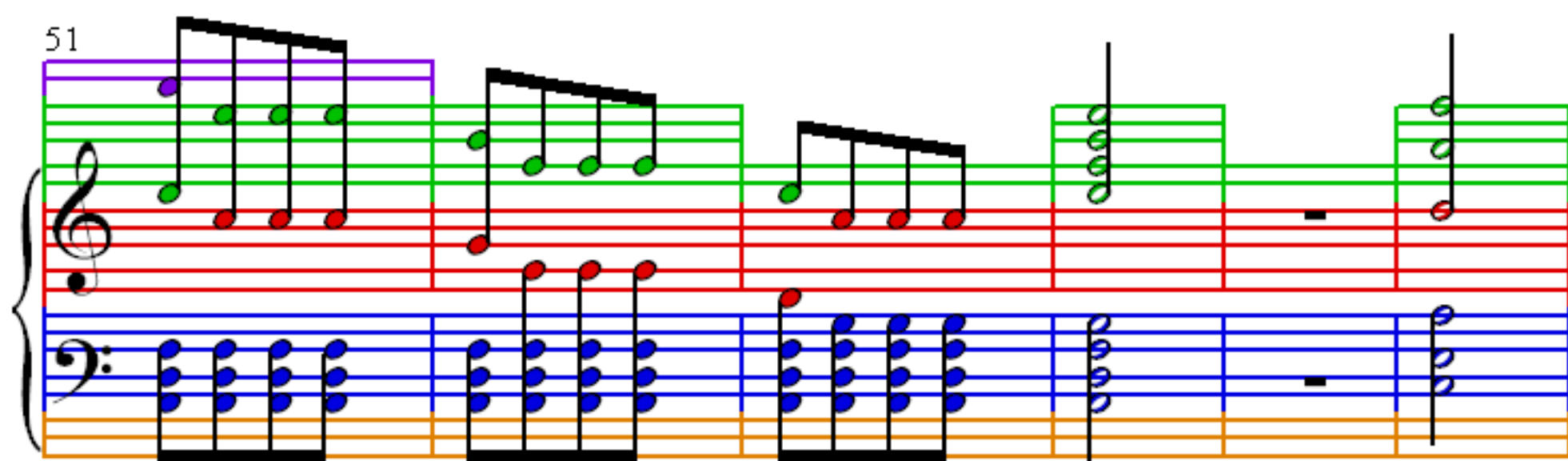
39



45

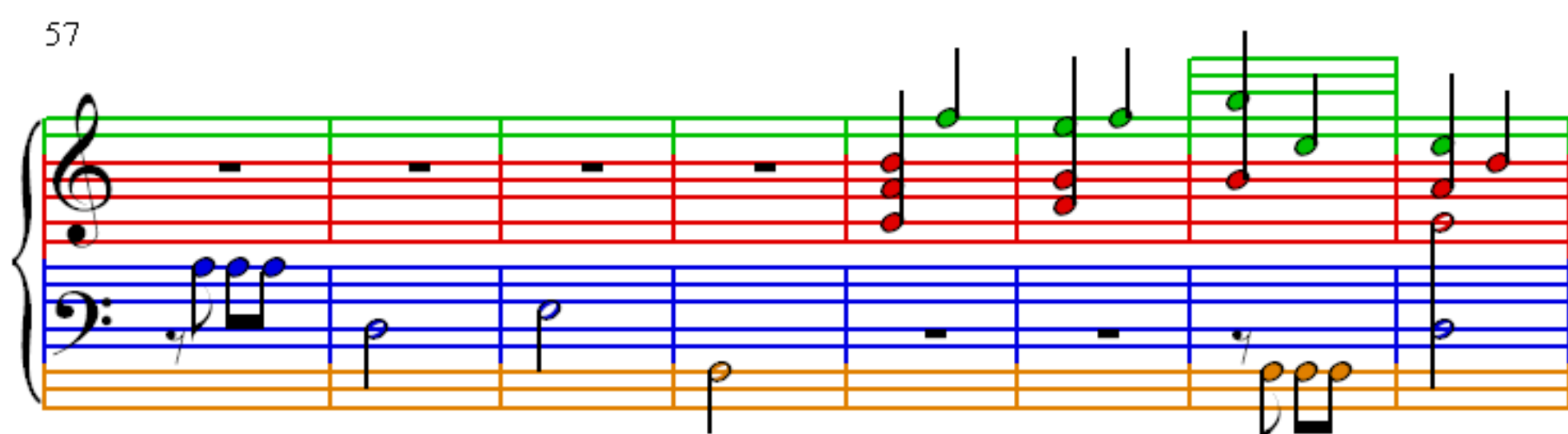


51



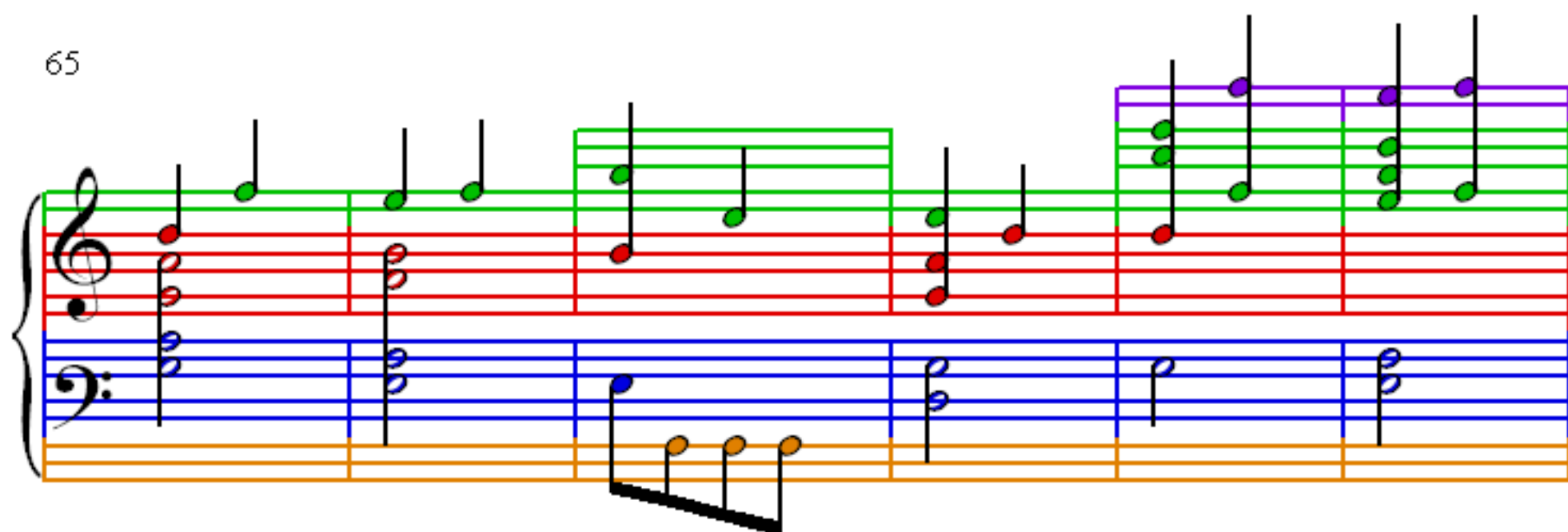
System 51: Treble clef (green notes), Bass clef (blue notes). The system consists of six measures. Measures 1-3 feature a descending eighth-note scale in the treble and a descending eighth-note scale in the bass. Measures 4-5 feature a whole note chord in the treble and a whole note chord in the bass. Measure 6 features a whole note chord in the treble and a whole note chord in the bass.

57



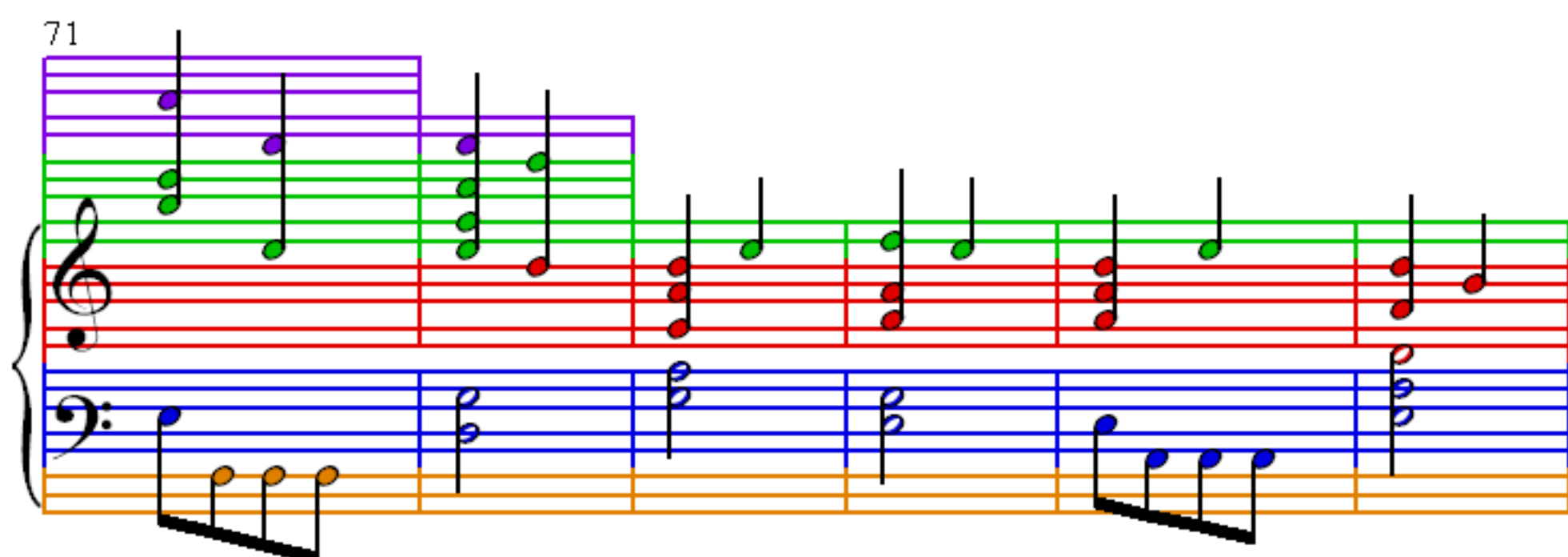
System 57: Treble clef (green notes), Bass clef (blue notes). The system consists of six measures. Measures 1-4 feature a whole note chord in the treble and a whole note chord in the bass. Measures 5-6 feature a descending eighth-note scale in the treble and a descending eighth-note scale in the bass.

65



System 65: Treble clef (green notes), Bass clef (blue notes). The system consists of six measures. Measures 1-4 feature a descending eighth-note scale in the treble and a descending eighth-note scale in the bass. Measures 5-6 feature a whole note chord in the treble and a whole note chord in the bass.

71



System 71: Treble clef (green notes), Bass clef (blue notes). The system consists of six measures. Measures 1-2 feature a descending eighth-note scale in the treble and a descending eighth-note scale in the bass. Measures 3-4 feature a whole note chord in the treble and a whole note chord in the bass. Measures 5-6 feature a whole note chord in the treble and a whole note chord in the bass.

77

77

83

83

89

89

95

95

101

Measures 101-106 of a piano score. The treble staff features a series of ascending and descending eighth-note runs, with some notes highlighted in green and purple. The bass staff provides a steady accompaniment with eighth-note patterns. The staves are color-coded: green for the treble staff, red for the middle staves, blue for the bass staff, and orange for the bottom staves.

107

Measures 107-112 of a piano score. The treble staff shows a mix of eighth-note runs and rests, with some notes highlighted in green and purple. The bass staff continues with eighth-note patterns. The staves are color-coded: green for the treble staff, red for the middle staves, blue for the bass staff, and orange for the bottom staves.

113

Measures 113-118 of a piano score. The treble staff features eighth-note runs and rests, with some notes highlighted in green and purple. The bass staff provides a steady accompaniment with eighth-note patterns. The staves are color-coded: green for the treble staff, red for the middle staves, blue for the bass staff, and orange for the bottom staves.

119

Measures 119-124 of a piano score. The treble staff shows eighth-note runs and rests, with some notes highlighted in green and purple. The bass staff continues with eighth-note patterns. The staves are color-coded: green for the treble staff, red for the middle staves, blue for the bass staff, and orange for the bottom staves.

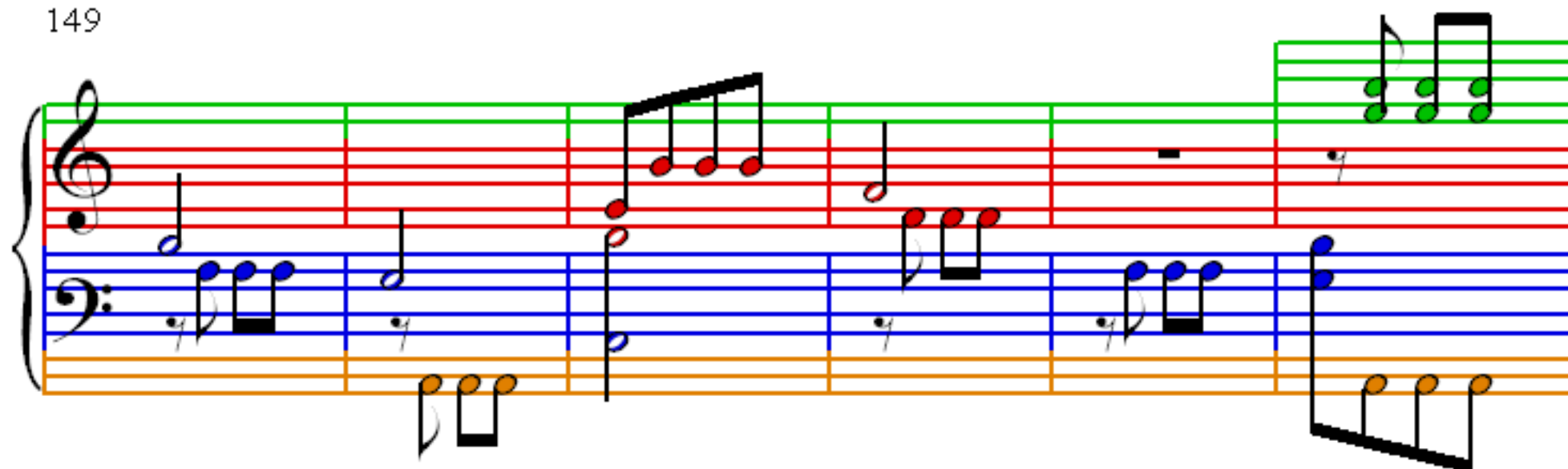
125

131

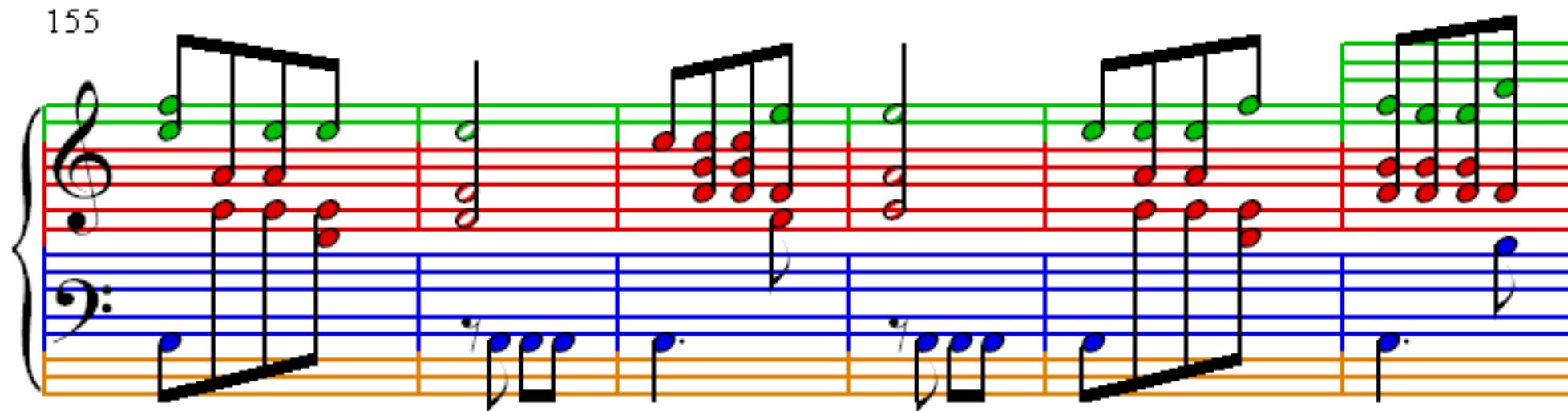
137

143

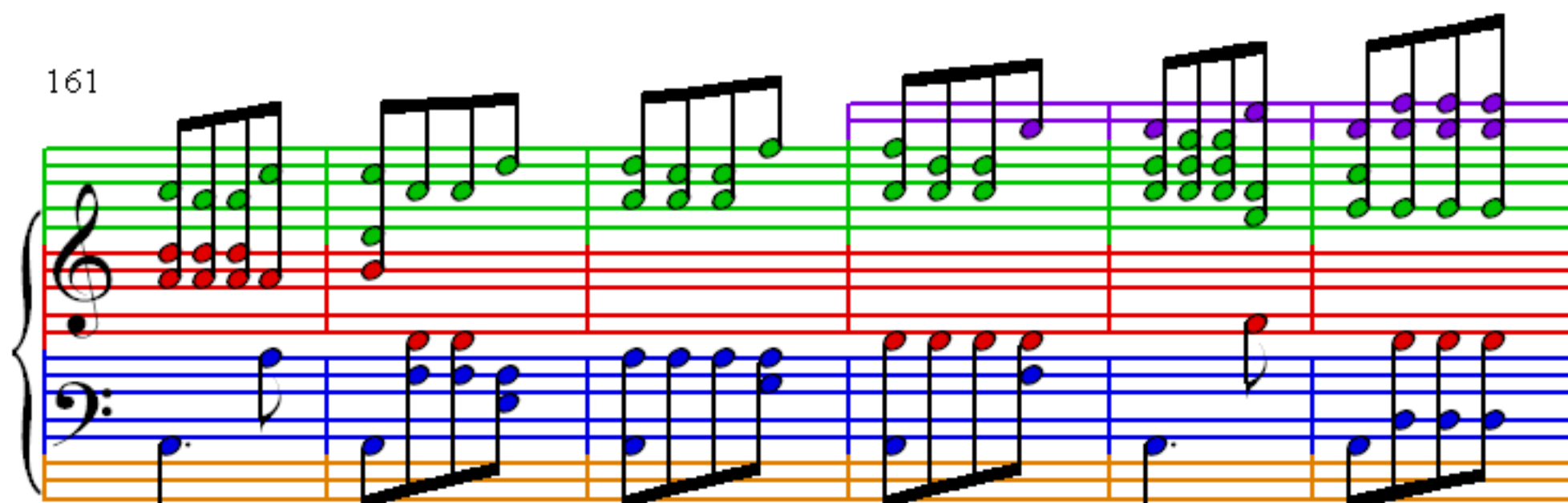
149



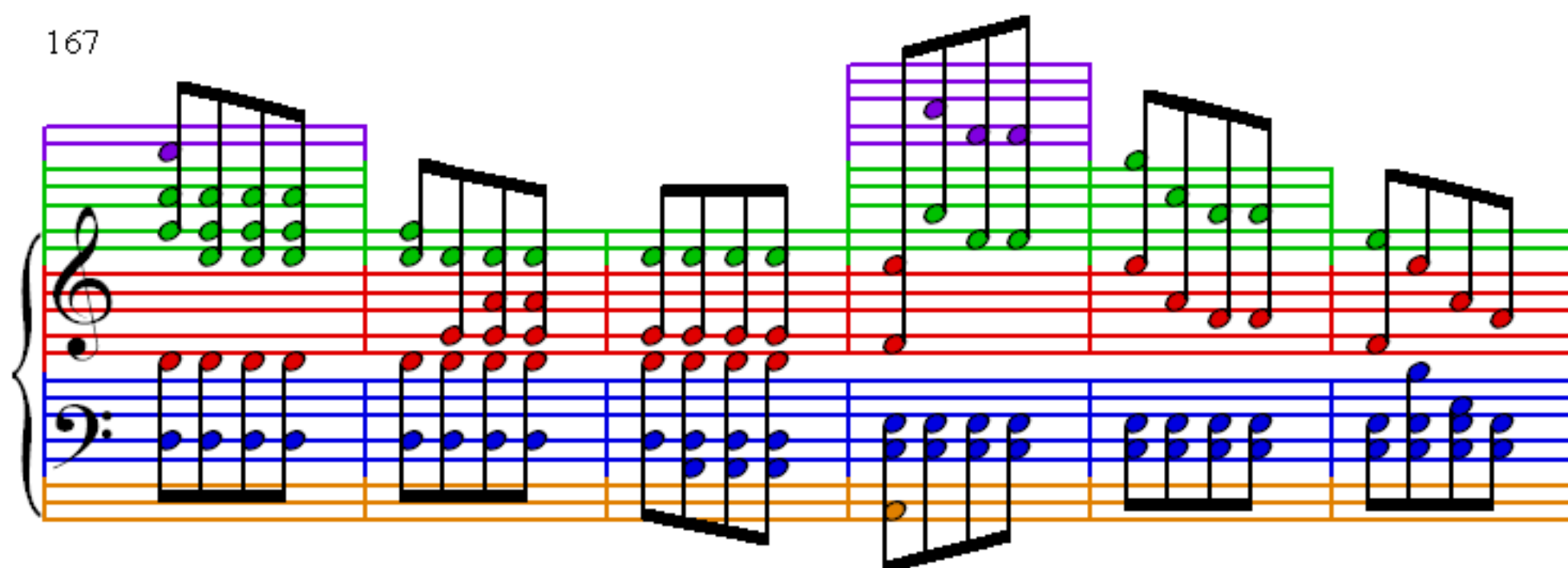
155



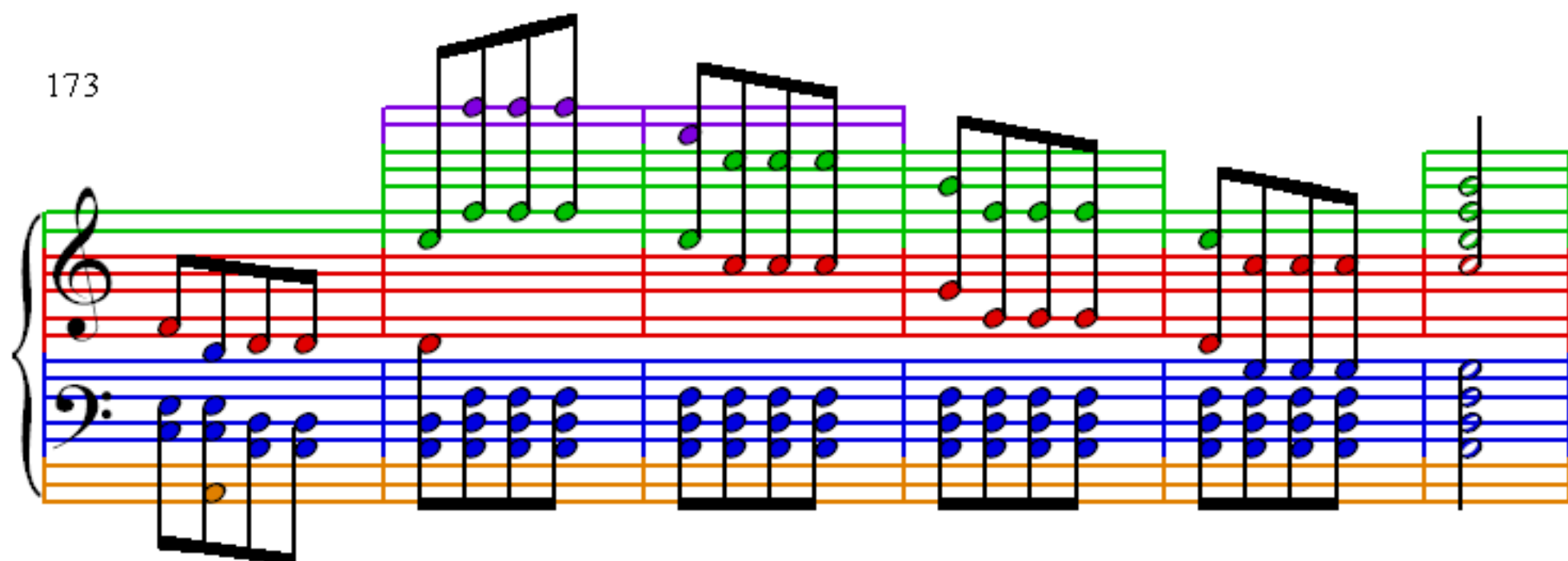
161



167

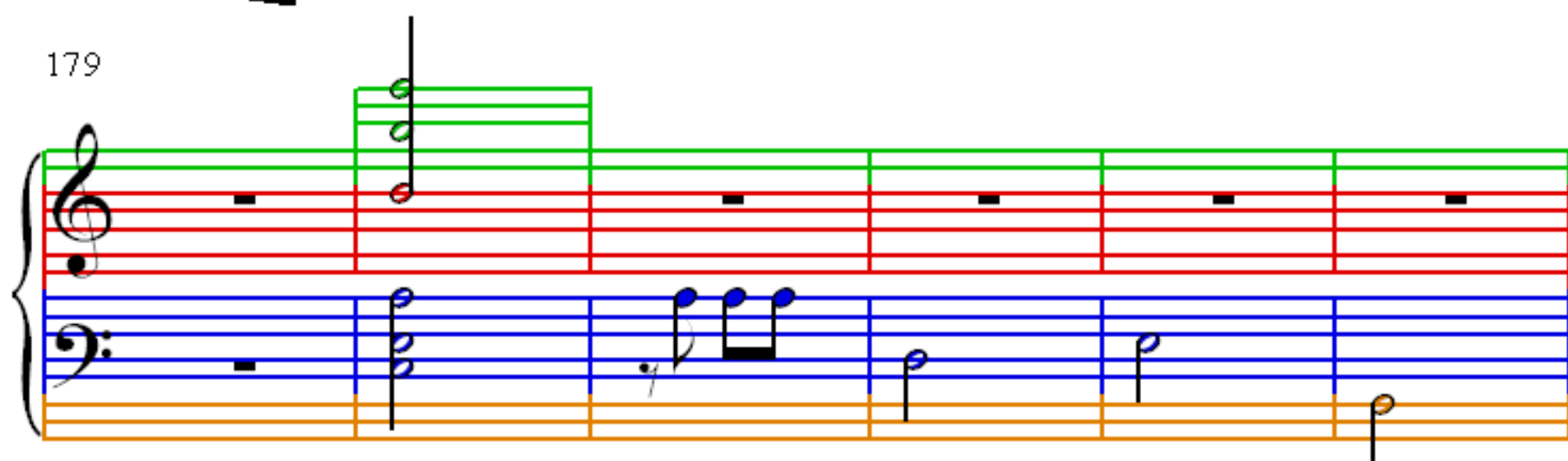


173



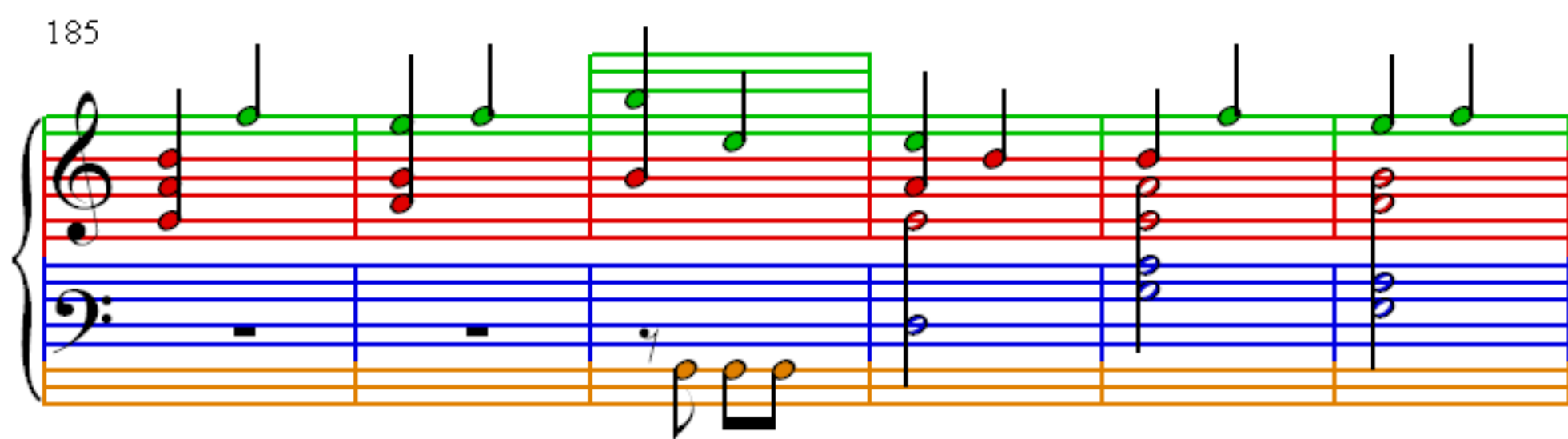
Measures 173-178. Treble clef: measures 173-174 have a green staff with a whole note chord; measures 175-178 have a green staff with a whole note chord. Bass clef: measures 173-174 have a blue staff with a whole note chord; measures 175-178 have a blue staff with a whole note chord. The bottom staff is orange and contains a whole note chord in measure 173, a whole note chord in measure 174, and a whole note chord in measure 175. The top staff is green and contains a whole note chord in measure 173, a whole note chord in measure 174, and a whole note chord in measure 175.

179



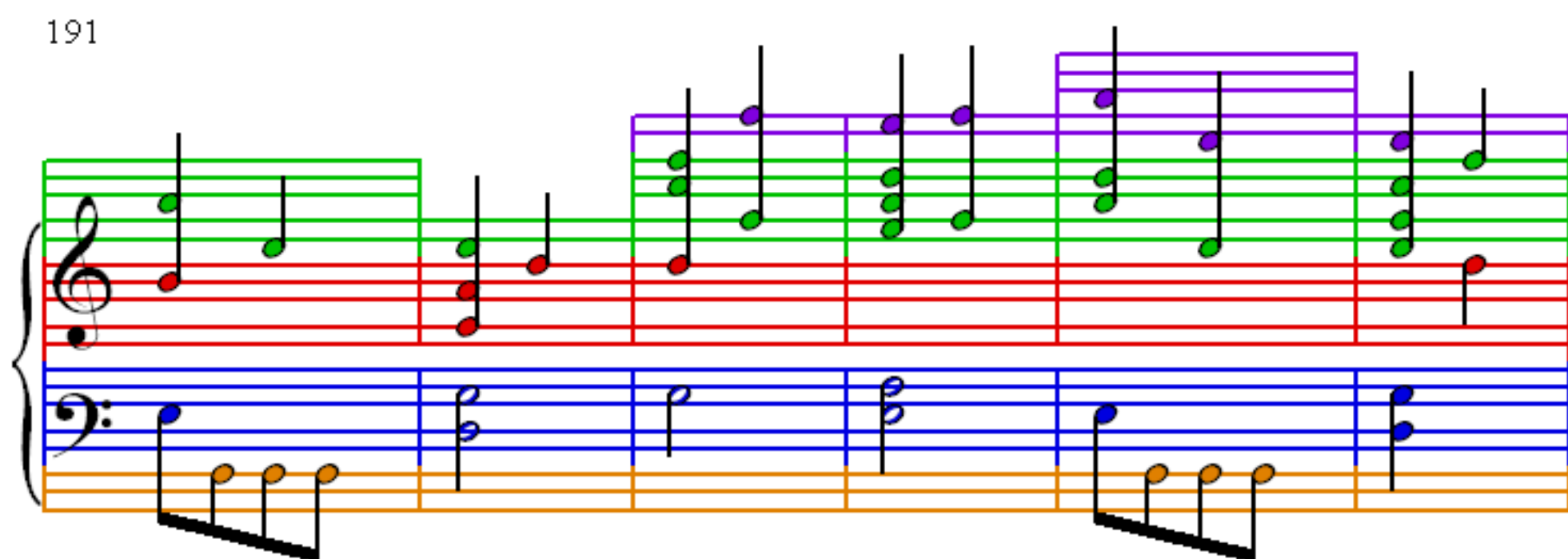
Measures 179-184. Treble clef: measures 179-184 have a green staff with a whole note chord. Bass clef: measures 179-184 have a blue staff with a whole note chord. The bottom staff is orange and contains a whole note chord in measure 179, a whole note chord in measure 180, and a whole note chord in measure 181.

185



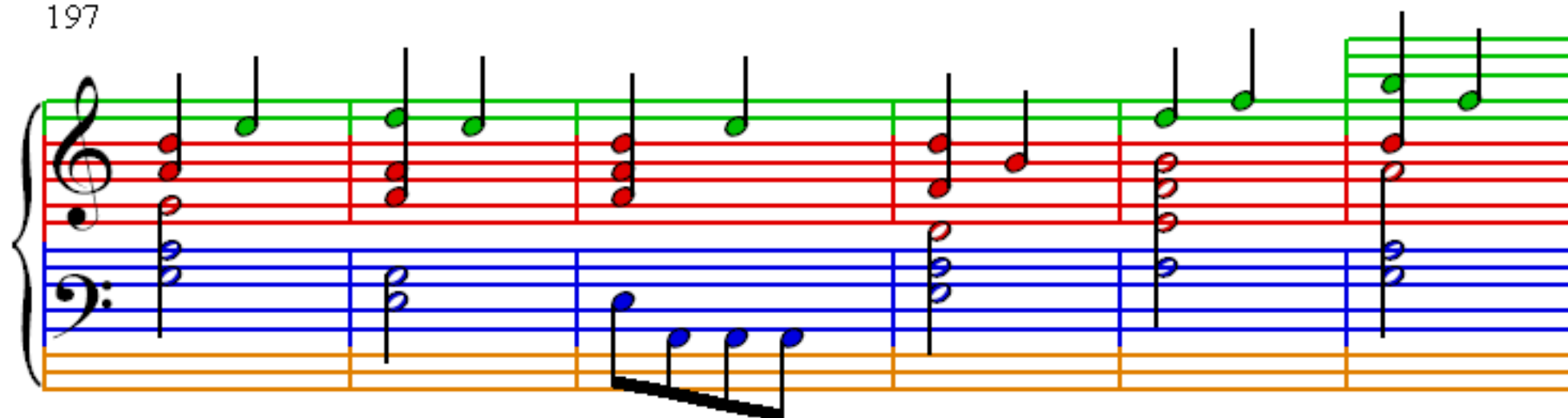
Measures 185-190. Treble clef: measures 185-186 have a green staff with a whole note chord; measures 187-190 have a green staff with a whole note chord. Bass clef: measures 185-186 have a blue staff with a whole note chord; measures 187-190 have a blue staff with a whole note chord. The bottom staff is orange and contains a whole note chord in measure 185, a whole note chord in measure 186, and a whole note chord in measure 187.

191

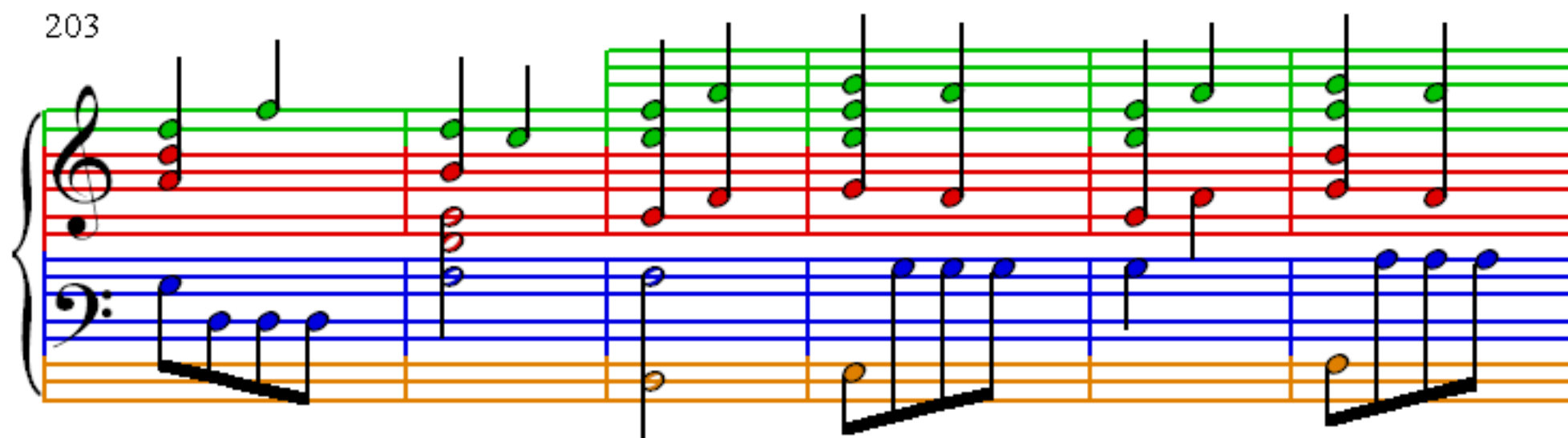


Measures 191-196. Treble clef: measures 191-192 have a green staff with a whole note chord; measures 193-196 have a green staff with a whole note chord. Bass clef: measures 191-192 have a blue staff with a whole note chord; measures 193-196 have a blue staff with a whole note chord. The bottom staff is orange and contains a whole note chord in measure 191, a whole note chord in measure 192, and a whole note chord in measure 193.

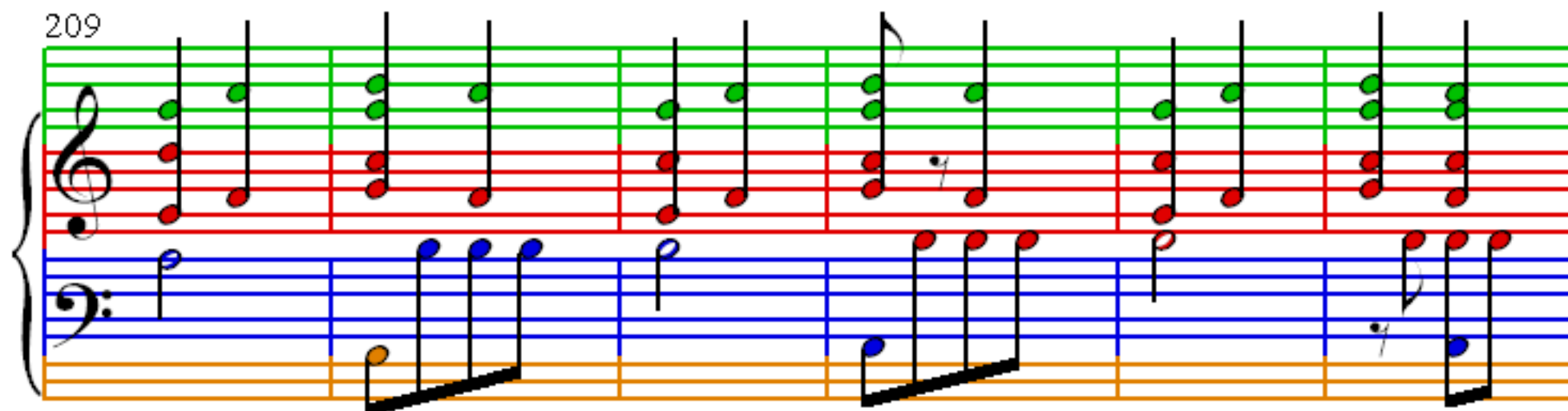
197



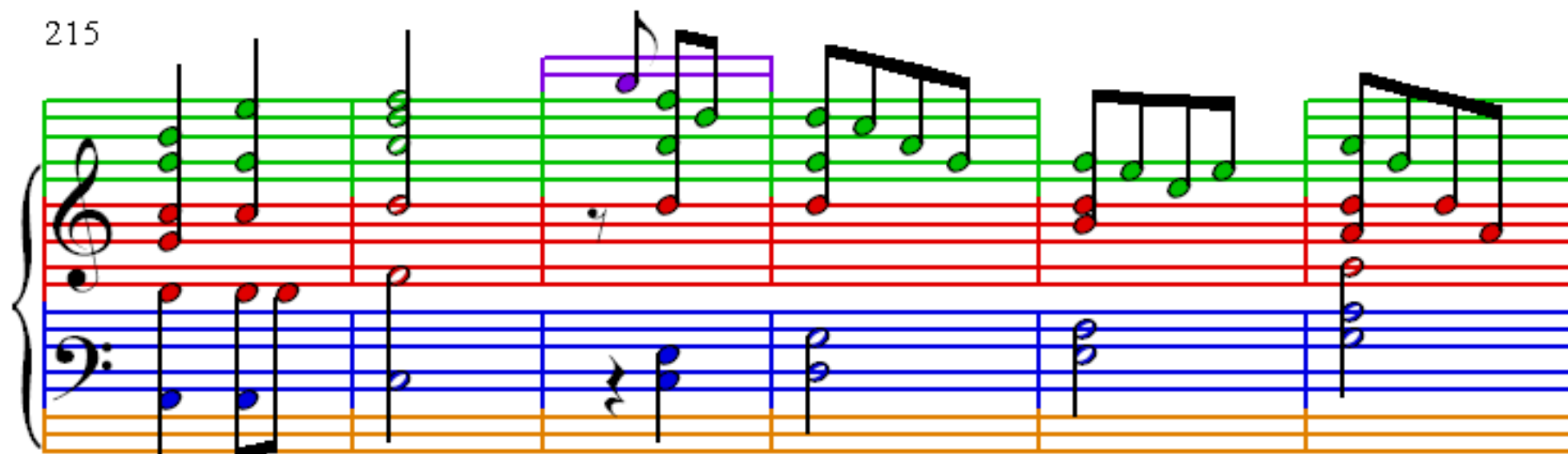
203



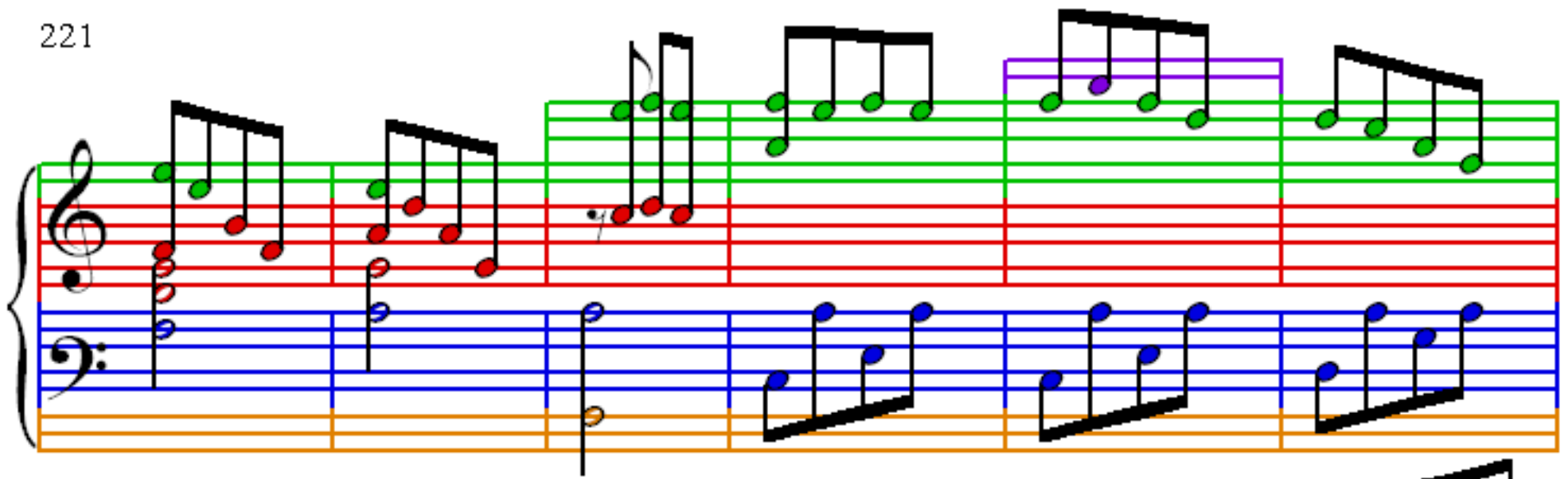
209



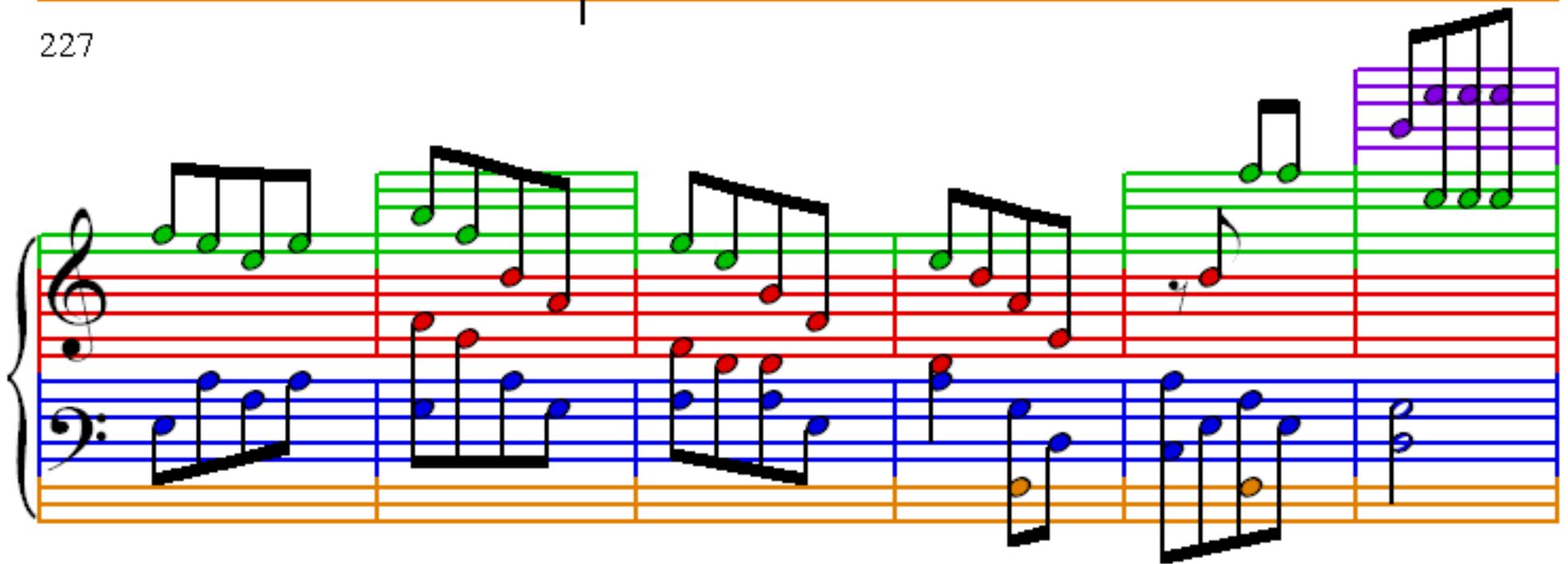
215



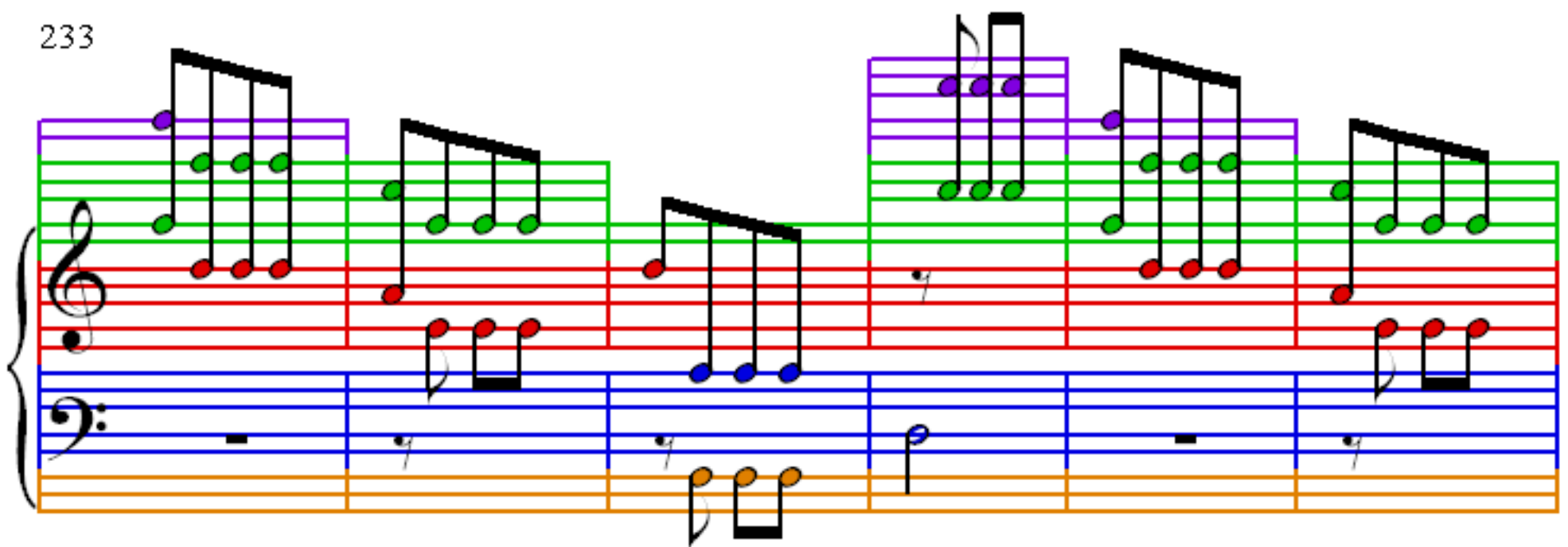
221



227



233



239

