
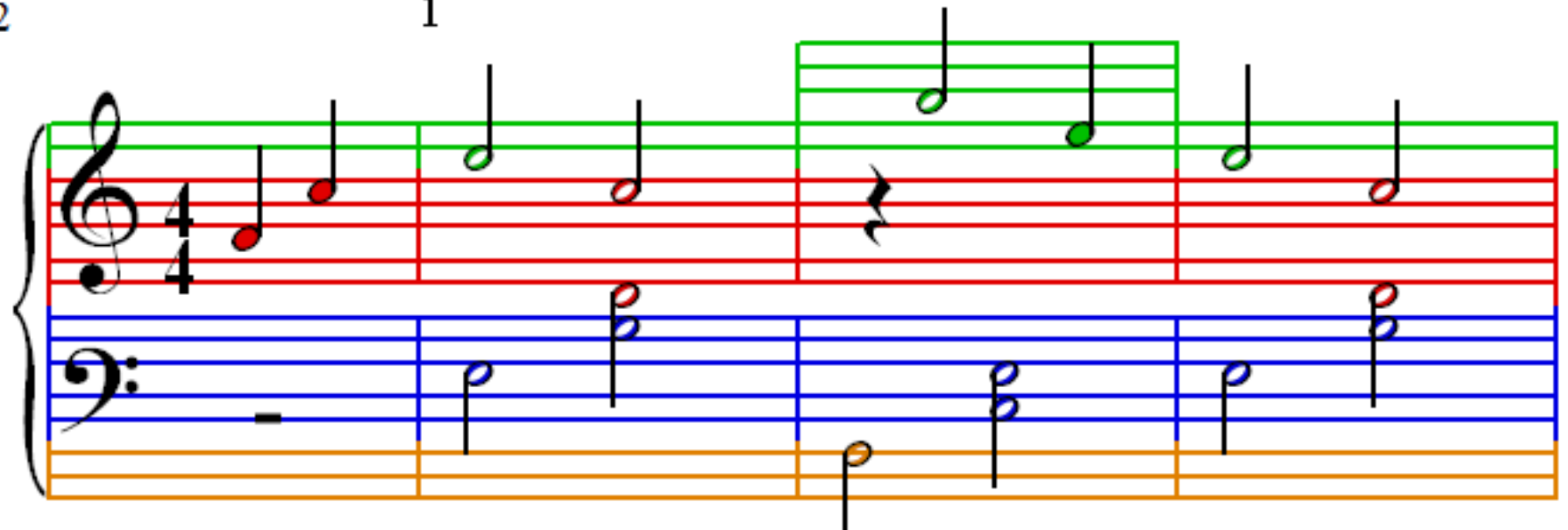


Una Paloma Blanca

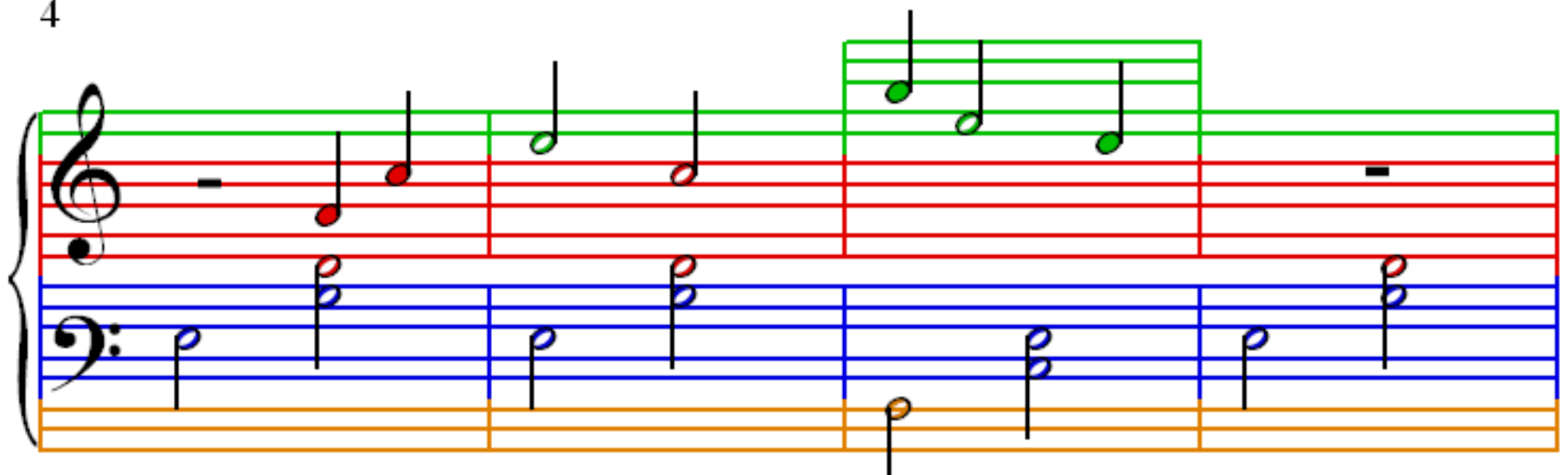
George Baker

 = 222

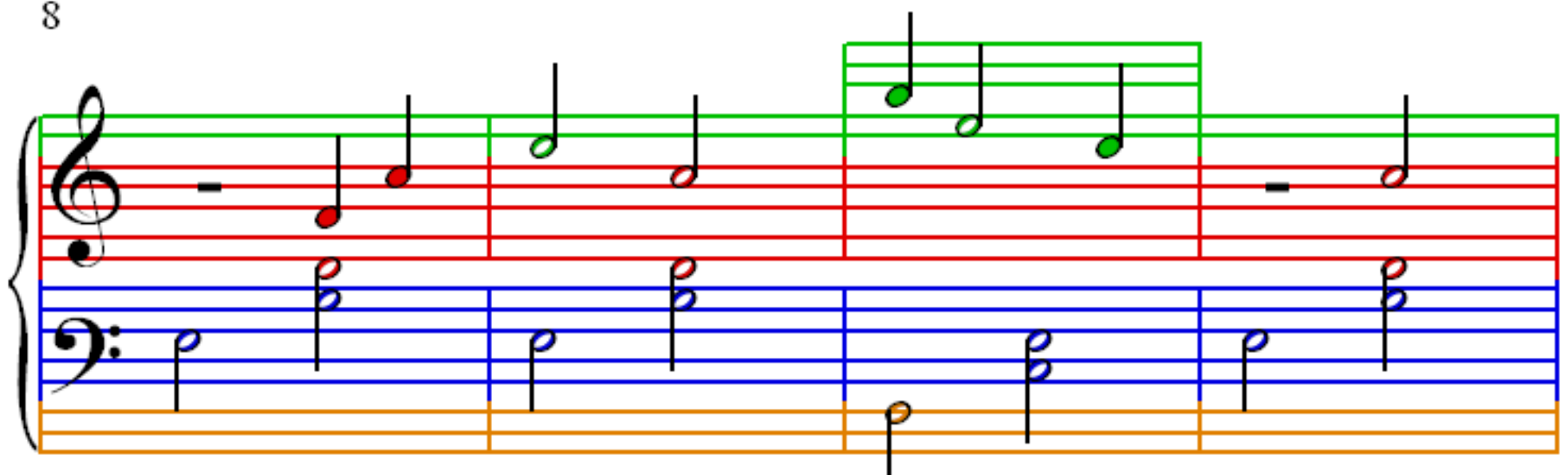
1



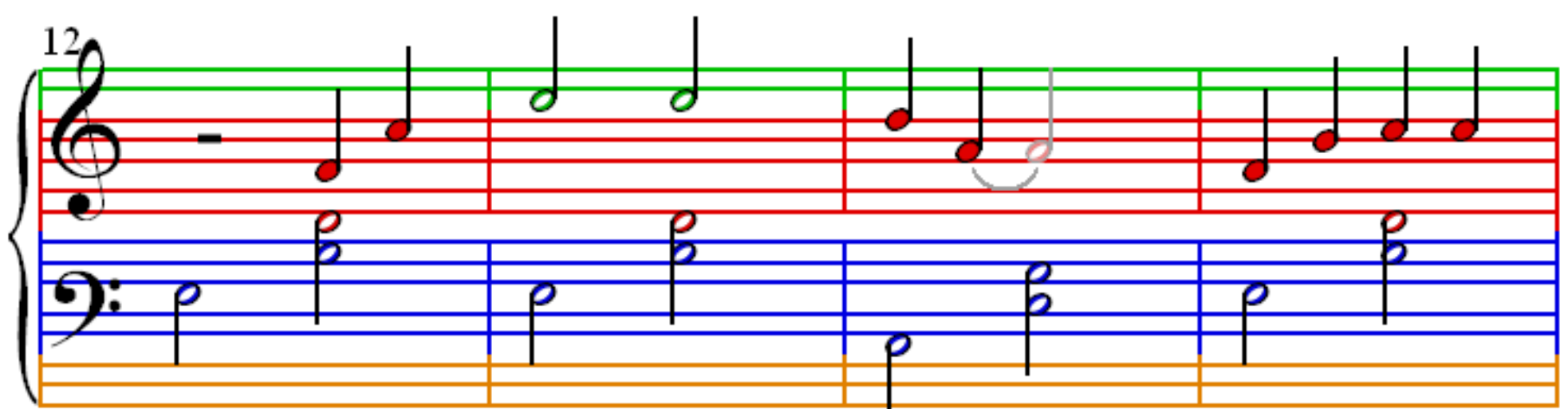
4



8



12



16

20

24

28

32

Measures 32-35: Treble clef contains red eighth notes (G4, A4, B4, C5, D5, E5, F5, G5) and a quarter rest. Bass clef contains blue chords (F3-A2, G3-B2, A3-C3, B2-D3) and an orange bass line (F2, G2, A2, B2).

36

Measures 36-39: Treble clef contains green notes (G4, A4, B4, C5, D5, E5, F5, G5) and a half note (G5). Bass clef contains blue chords (F3-A2, G3-B2, A3-C3, B2-D3) and an orange bass line (F2, G2, A2, B2).

40

Measures 40-43: Treble clef contains rests in measures 40-42 and green notes (G4, A4, B4, C5) in measure 43. Bass clef contains blue chords (F3-A2, G3-B2, A3-C3, B2-D3) and an orange bass line (F2, G2, A2, B2).

44

Measures 44-47: Treble clef contains green notes (G4, A4, B4, C5) in measure 44, rests in measures 45-46, and green notes (G4, A4, B4, C5) in measure 47. Bass clef contains blue chords (F3-A2, G3-B2, A3-C3, B2-D3) and an orange bass line (F2, G2, A2, B2).

48

Measures 48-51. Treble clef: Measure 48 has two green quarter notes (G4, A4) beamed together, followed by a green quarter note (B4) and a whole rest. Measure 49 has two green quarter notes (C5, B4). Measure 50 has a whole rest. Measure 51 has a whole rest. Bass clef: Measure 48 has a blue chord (F3, A2) and an orange quarter note (F2). Measure 49 has a blue chord (G3, B2) and an orange quarter note (G2). Measure 50 has a blue chord (A3, C3) and an orange quarter note (A2). Measure 51 has a blue chord (B3, D3) and an orange quarter note (B2).

52

Measures 52-55. Treble clef: Measure 52 has a whole rest. Measure 53 has two green quarter notes (C5, B4). Measure 54 has two green quarter notes (A4, G4). Measure 55 has a whole rest. Bass clef: Measure 52 has a blue chord (F3, A2) and an orange quarter note (F2). Measure 53 has a blue chord (G3, B2) and an orange quarter note (G2). Measure 54 has a blue chord (A3, C3) and an orange quarter note (A2). Measure 55 has a blue chord (B3, D3) and an orange quarter note (B2).

56

Measures 56-59. Treble clef: Measure 56 has a green quarter note (G4), a red quarter note (A4), and a red quarter note (B4). Measure 57 has a whole rest, a red quarter note (C5), and a red quarter note (B4). Measure 58 has a red quarter note (A4), a red quarter note (G4), and a red quarter note (F4). Measure 59 has a whole rest. Bass clef: Measure 56 has a blue chord (F3, A2) and an orange quarter note (F2). Measure 57 has a blue chord (G3, B2) and an orange quarter note (G2). Measure 58 has a blue chord (A3, C3) and an orange quarter note (A2). Measure 59 has a blue chord (B3, D3) and an orange quarter note (B2).