

# What a Feeling

from Flash Dance

Irene Cara

$\bullet = 126$

1

Measures 1-5 of the piece. The treble clef staff has a 4/4 time signature. The melody is in the treble clef, starting on a whole note G4, followed by quarter notes A4, B4, C5, D5, E5, F#5, and G5. The bass clef staff has a whole note chord of C4 and E3 in the first measure, followed by whole notes G2, C3, and E3. A slur connects the last two measures of the bass line.

6

Measures 6-10. The treble clef staff continues the melody with eighth notes: G5, F#5, E5, D5, C5, B4, A4, and G4. The bass clef staff has whole notes: G2, C3, E3, G2, C3, E3, G2, C3, E3, and G2, C3, E3.

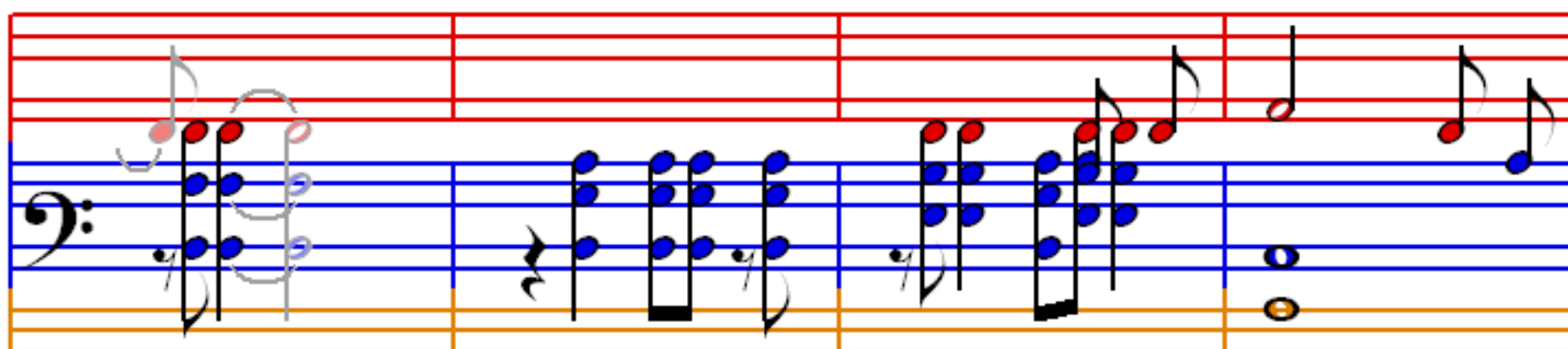
11

Measures 11-15. The treble clef staff continues the melody with eighth notes: F#4, E4, D4, C4, B3, A3, G3, and F#3. The bass clef staff has whole notes: G2, C3, E3, G2, C3, E3, G2, C3, E3, and G2, C3, E3.

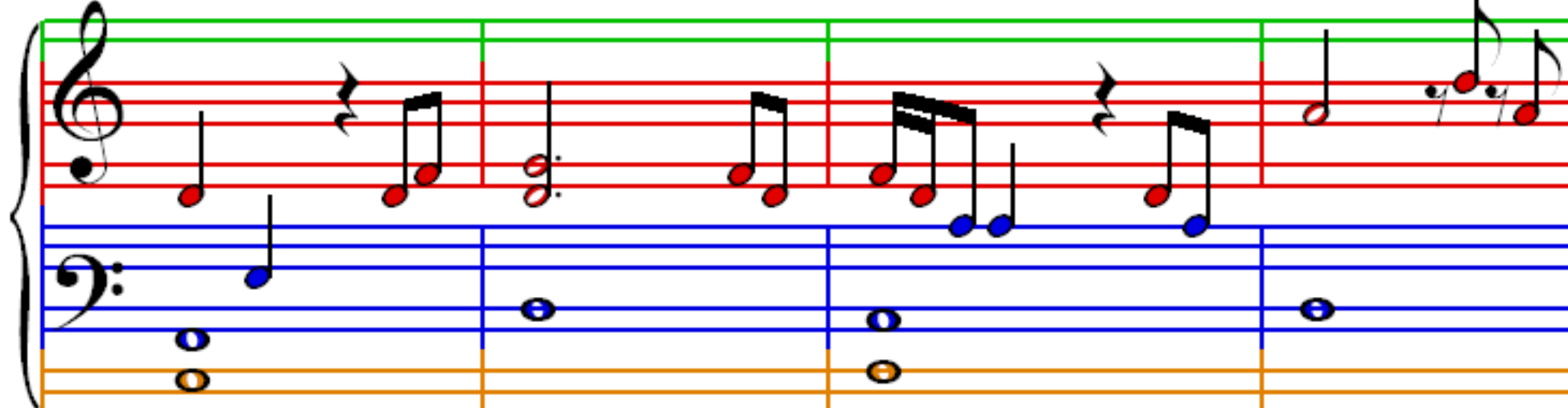
16

Measures 16-19. The treble clef staff continues the melody with eighth notes: E4, D4, C4, B3, A3, G3, F#3, and E4. The bass clef staff has whole notes: G2, C3, E3, G2, C3, E3, G2, C3, E3, and a final chord of G2, C3, E3, G2, C3, E3.

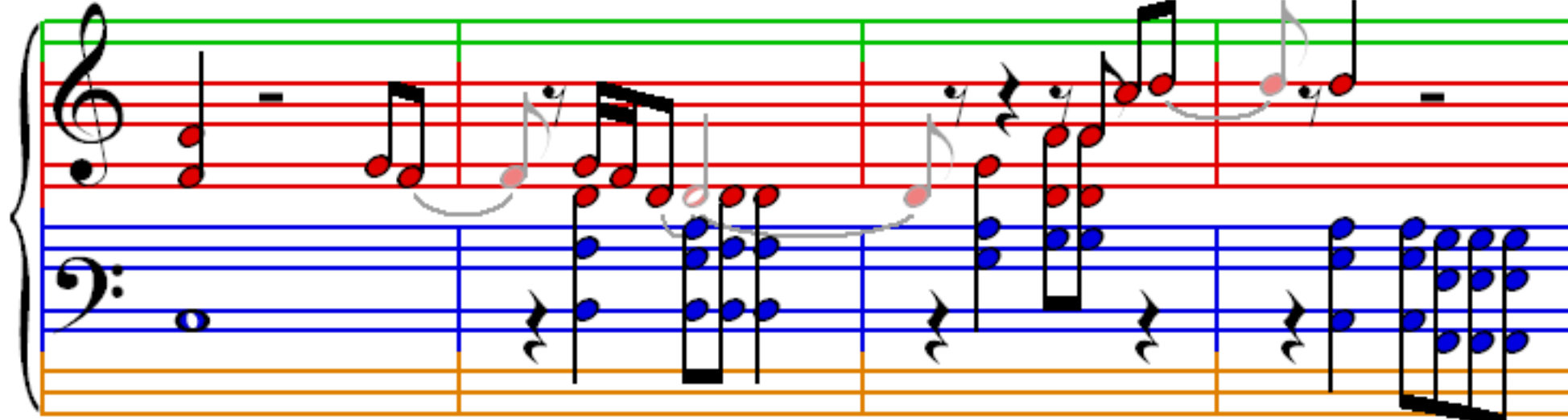
20



24



28



32



36

Measures 36-39. Treble clef: Measure 36 has a quarter rest, eighth notes G4 and A4, quarter note B4, eighth notes A4 and G4, quarter note F#4. Measure 37 has a quarter rest, eighth notes E4 and D4, quarter note C4, eighth notes B3 and A3, quarter note G3. Measure 38 has a half rest, eighth notes F#3 and E3, quarter note D3, eighth notes C3 and B2, quarter note A2. Measure 39 has a quarter rest, eighth notes G2 and F#2, quarter note E2, eighth notes D2 and C2, quarter note B1. Bass clef: Measure 36 has a quarter rest, eighth notes G2 and F#2, quarter note E2, eighth notes D2 and C2, quarter note B1. Measure 37 has a quarter rest, eighth notes A1 and G1, quarter note F#1, eighth notes E1 and D1, quarter note C1. Measure 38 has a quarter rest, eighth notes B1 and A1, quarter note G1, eighth notes F#1 and E1, quarter note D1. Measure 39 has a quarter rest, eighth notes C1 and B1, quarter note A1, eighth notes G1 and F#1, quarter note E1.

40

Measures 40-43. Treble clef: Measure 40 has a quarter rest, eighth notes G4 and A4, quarter note B4, eighth notes A4 and G4, quarter note F#4. Measure 41 has a quarter rest, eighth notes E4 and D4, quarter note C4, eighth notes B3 and A3, quarter note G3. Measure 42 has a half rest, eighth notes F#3 and E3, quarter note D3, eighth notes C3 and B2, quarter note A2. Measure 43 has a quarter rest, eighth notes G2 and F#2, quarter note E2, eighth notes D2 and C2, quarter note B1. Bass clef: Measure 40 has a quarter rest, eighth notes G2 and F#2, quarter note E2, eighth notes D2 and C2, quarter note B1. Measure 41 has a quarter rest, eighth notes A1 and G1, quarter note F#1, eighth notes E1 and D1, quarter note C1. Measure 42 has a quarter rest, eighth notes B1 and A1, quarter note G1, eighth notes F#1 and E1, quarter note D1. Measure 43 has a quarter rest, eighth notes C1 and B1, quarter note A1, eighth notes G1 and F#1, quarter note E1.

44

Measures 44-47. Treble clef: Measure 44 has a quarter rest, eighth notes G4 and A4, quarter note B4, eighth notes A4 and G4, quarter note F#4. Measure 45 has a quarter rest, eighth notes E4 and D4, quarter note C4, eighth notes B3 and A3, quarter note G3. Measure 46 has a half rest, eighth notes F#3 and E3, quarter note D3, eighth notes C3 and B2, quarter note A2. Measure 47 has a quarter rest, eighth notes G2 and F#2, quarter note E2, eighth notes D2 and C2, quarter note B1. Bass clef: Measure 44 has a quarter rest, eighth notes G2 and F#2, quarter note E2, eighth notes D2 and C2, quarter note B1. Measure 45 has a quarter rest, eighth notes A1 and G1, quarter note F#1, eighth notes E1 and D1, quarter note C1. Measure 46 has a quarter rest, eighth notes B1 and A1, quarter note G1, eighth notes F#1 and E1, quarter note D1. Measure 47 has a quarter rest, eighth notes C1 and B1, quarter note A1, eighth notes G1 and F#1, quarter note E1.

48

Measures 48-51. Treble clef: Measure 48 has a quarter rest, eighth notes G4 and A4, quarter note B4, eighth notes A4 and G4, quarter note F#4. Measure 49 has a quarter rest, eighth notes E4 and D4, quarter note C4, eighth notes B3 and A3, quarter note G3. Measure 50 has a half rest, eighth notes F#3 and E3, quarter note D3, eighth notes C3 and B2, quarter note A2. Measure 51 has a quarter rest, eighth notes G2 and F#2, quarter note E2, eighth notes D2 and C2, quarter note B1. Bass clef: Measure 48 has a quarter rest, eighth notes G2 and F#2, quarter note E2, eighth notes D2 and C2, quarter note B1. Measure 49 has a quarter rest, eighth notes A1 and G1, quarter note F#1, eighth notes E1 and D1, quarter note C1. Measure 50 has a quarter rest, eighth notes B1 and A1, quarter note G1, eighth notes F#1 and E1, quarter note D1. Measure 51 has a quarter rest, eighth notes C1 and B1, quarter note A1, eighth notes G1 and F#1, quarter note E1.

52

57

62

67

71

Measures 71-73. Treble clef: Measure 71 has a quarter rest, a quarter note, and a quarter rest. Measure 72 has a quarter rest, a quarter note, an eighth note, and a quarter note. Measure 73 has a quarter note, a quarter note, and a quarter rest. Bass clef: Measures 71-73 feature a steady eighth-note accompaniment. Measure 72 has a circled triplet of eighth notes in the bass.

74

Measures 74-77. Treble clef: Measure 74 has a quarter rest, a quarter note, and a quarter note. Measure 75 has a quarter note, a quarter note, and a quarter note. Measure 76 has a quarter note, a quarter note, and a quarter note. Measure 77 has a quarter note, a quarter note, and a quarter rest. Bass clef: Measures 74-77 feature a steady eighth-note accompaniment. Measure 75 has a circled triplet of eighth notes in the bass.

78

Measures 78-82. Treble clef: Measure 78 has a quarter rest, a quarter note, and a quarter note. Measure 79 has a quarter note, a quarter note, and a quarter note. Measure 80 has a quarter note, a quarter note, and a quarter note. Measure 81 has a quarter note, a quarter note, and a quarter note. Measure 82 has a quarter note, a quarter note, and a quarter rest. Bass clef: Measures 78-82 feature a steady eighth-note accompaniment. Measure 79 has a circled triplet of eighth notes in the bass.

83

Measures 83-87. Treble clef: Measure 83 has a quarter rest, a quarter note, and a quarter note. Measure 84 has a quarter note, a quarter note, and a quarter note. Measure 85 has a quarter note, a quarter note, and a quarter note. Measure 86 has a quarter note, a quarter note, and a quarter note. Measure 87 has a quarter note, a quarter note, and a quarter rest. Bass clef: Measures 83-87 feature a steady eighth-note accompaniment. Measure 84 has a circled triplet of eighth notes in the bass.



87

Measures 87-89. Treble clef: Measure 87 has a quarter rest, followed by eighth notes G4, A4, B4, C5, and a quarter note D5. Measure 88 has a quarter rest, followed by eighth notes E5, D5, C5, B4, and a quarter note A4. Measure 89 has a quarter rest, followed by eighth notes G4, F4, E4, D4, and a quarter note C4. Bass clef: Measure 87 has a quarter note C3, followed by a beamed eighth-note pair (D3, E3), and a quarter note F3. Measure 88 has a quarter note G3, followed by a beamed eighth-note pair (A3, B3), and a quarter note C4. Measure 89 has a quarter note D4, followed by a beamed eighth-note pair (E4, F4), and a quarter note G4.

90

Measures 90-92. Treble clef: Measure 90 has a quarter rest, followed by eighth notes G4, A4, B4, C5, and a quarter note D5. Measure 91 has a quarter rest, followed by eighth notes E5, D5, C5, B4, and a quarter note A4. Measure 92 has a quarter rest, followed by eighth notes G4, F4, E4, D4, and a quarter note C4. Bass clef: Measure 90 has a quarter note C3, followed by a beamed eighth-note pair (D3, E3), and a quarter note F3. Measure 91 has a quarter note G3, followed by a beamed eighth-note pair (A3, B3), and a quarter note C4. Measure 92 has a quarter note D4, followed by a beamed eighth-note pair (E4, F4), and a quarter note G4.

93

Measures 93-96. Treble clef: Measure 93 has a quarter rest, followed by eighth notes G4, A4, B4, C5, and a quarter note D5. Measure 94 has a quarter rest, followed by eighth notes E5, D5, C5, B4, and a quarter note A4. Measure 95 has a quarter rest, followed by eighth notes G4, F4, E4, D4, and a quarter note C4. Measure 96 has a quarter rest, followed by eighth notes B3, A3, G3, F3, and a quarter note E3. Bass clef: Measure 93 has a quarter note C3, followed by a beamed eighth-note pair (D3, E3), and a quarter note F3. Measure 94 has a quarter note G3, followed by a beamed eighth-note pair (A3, B3), and a quarter note C4. Measure 95 has a quarter note D4, followed by a beamed eighth-note pair (E4, F4), and a quarter note G4. Measure 96 has a quarter note A4, followed by a beamed eighth-note pair (B4, C5), and a quarter note D5.

97

Measures 97-100. Treble clef: Measure 97 has a quarter rest, followed by eighth notes G4, A4, B4, C5, and a quarter note D5. Measure 98 has a quarter rest, followed by eighth notes E5, D5, C5, B4, and a quarter note A4. Measure 99 has a quarter rest, followed by eighth notes G4, F4, E4, D4, and a quarter note C4. Measure 100 has a quarter rest, followed by eighth notes B3, A3, G3, F3, and a quarter note E3. Bass clef: Measure 97 has a quarter note C3, followed by a beamed eighth-note pair (D3, E3), and a quarter note F3. Measure 98 has a quarter note G3, followed by a beamed eighth-note pair (A3, B3), and a quarter note C4. Measure 99 has a quarter note D4, followed by a beamed eighth-note pair (E4, F4), and a quarter note G4. Measure 100 has a quarter note A4, followed by a beamed eighth-note pair (B4, C5), and a quarter note D5.