

The Ugly Bug Ball

Richard M. Sherman and Robert B. Sherman

$\text{♩} = 100$

Steadily

1

Measures 1 and 2 of the piece. The key signature has one sharp (F#). The time signature is 4/4. The melody in the treble clef starts on G4, moves to A4, then B4, and continues with eighth notes. The bass clef accompaniment consists of two chords: G2-B2-D3 in the first measure and A2-C3-E3 in the second measure.

3

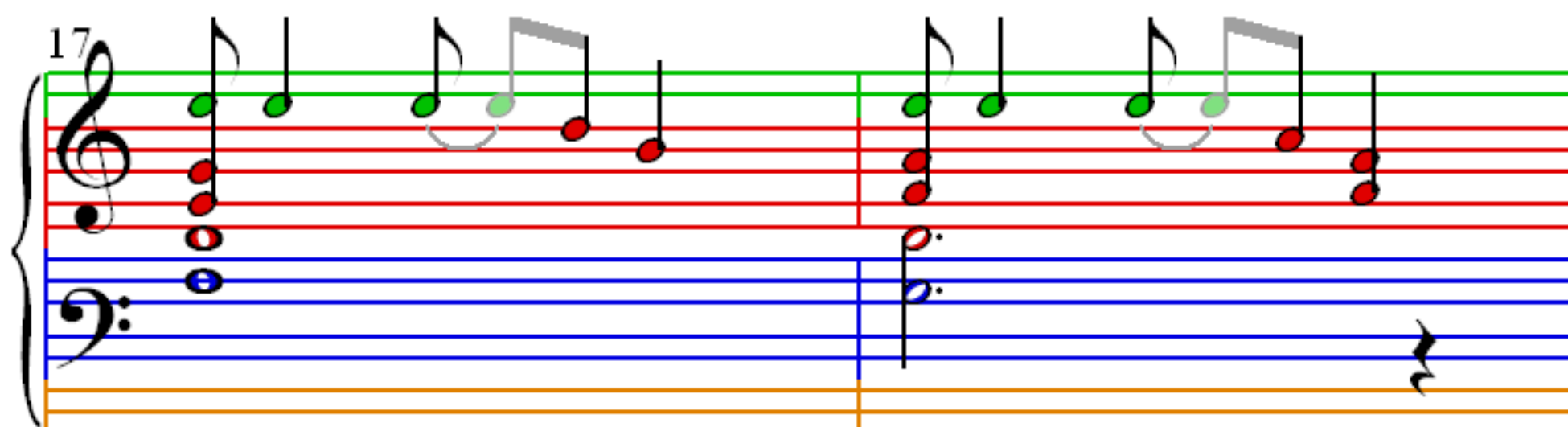
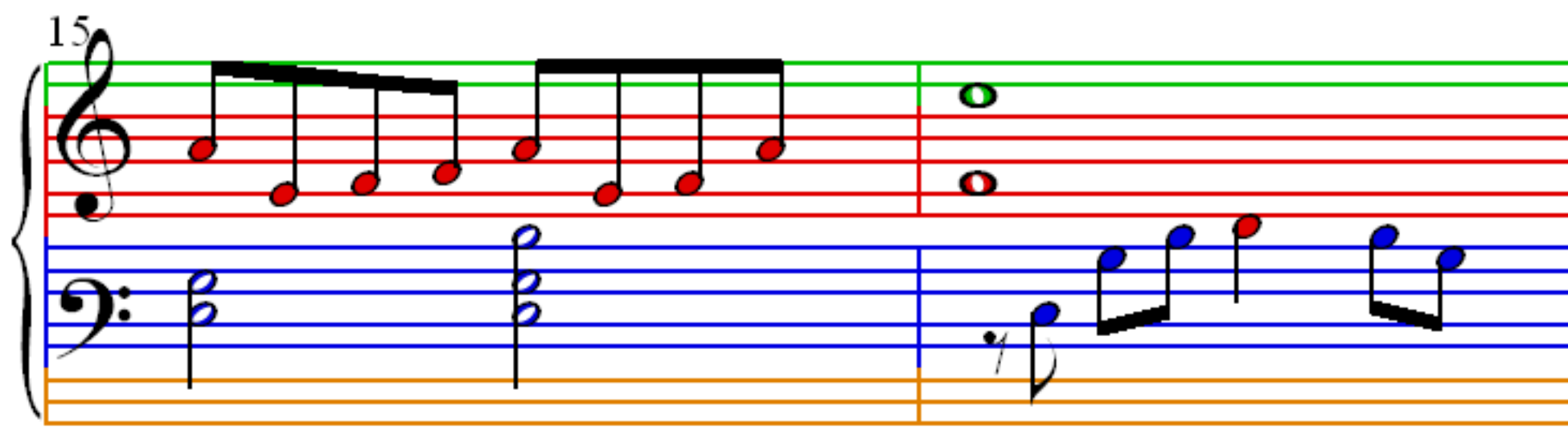
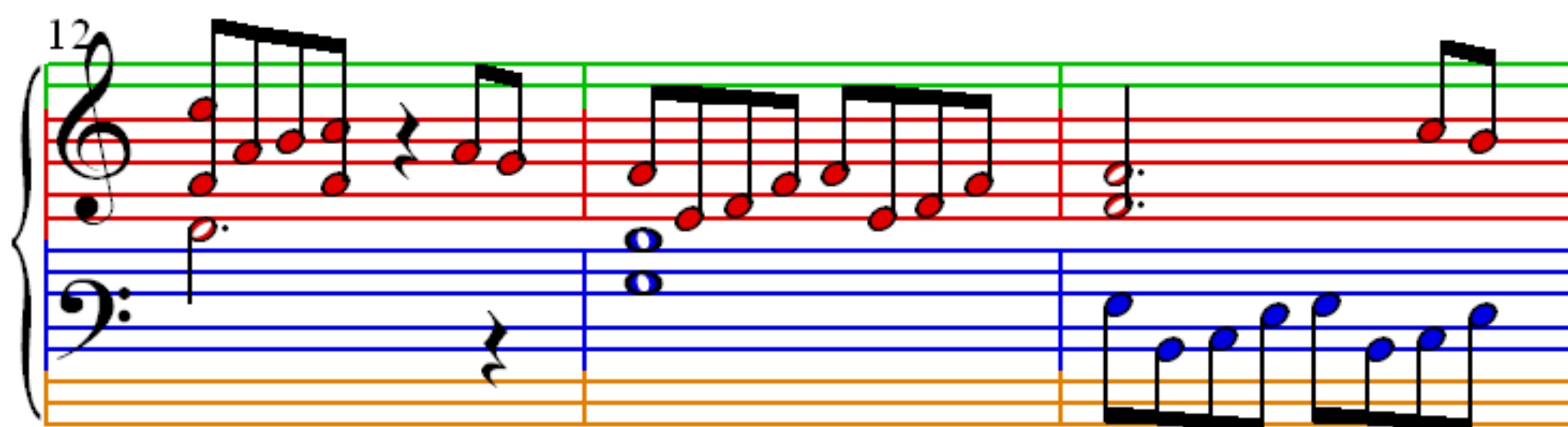
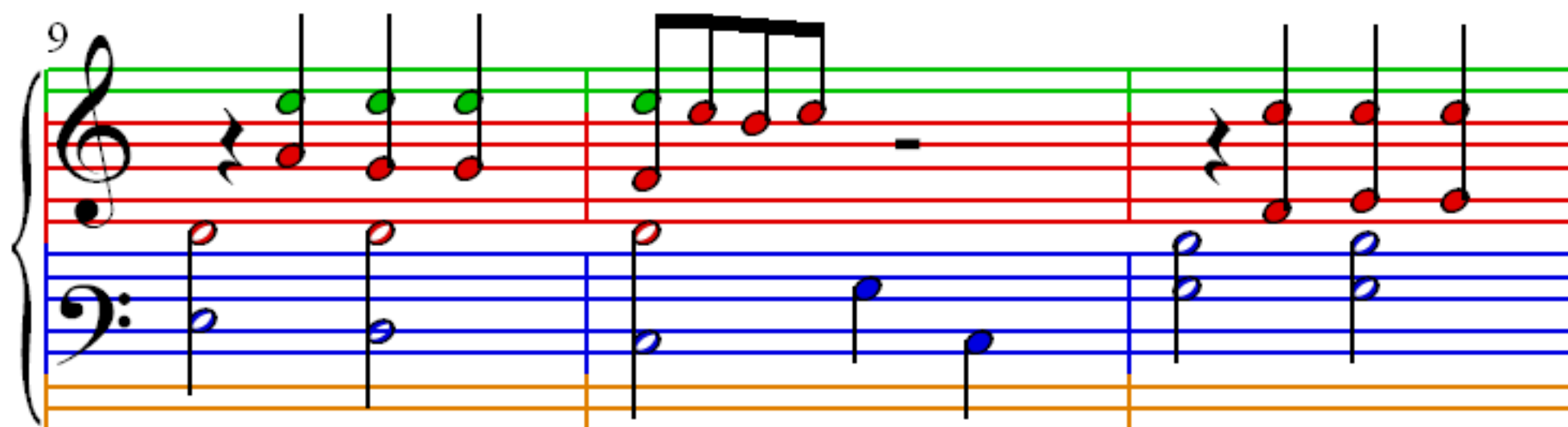
Measures 3 and 4. The melody continues with eighth notes. The bass clef accompaniment changes in measure 4 to a moving line of eighth notes: G2, A2, B2, C3, D3, E3, F#3, G3. A *mf* (mezzo-forte) dynamic marking is present at the end of measure 4.

5

Measures 5 and 6. The melody continues with eighth notes. The bass clef accompaniment changes in measure 6 to a moving line of eighth notes: G2, A2, B2, C3, D3, E3, F#3, G3.

7

Measures 7 and 8. The melody continues with eighth notes. The bass clef accompaniment changes in measure 8 to a moving line of eighth notes: G2, A2, B2, C3, D3, E3, F#3, G3.



19

22

25

1. 2.

28