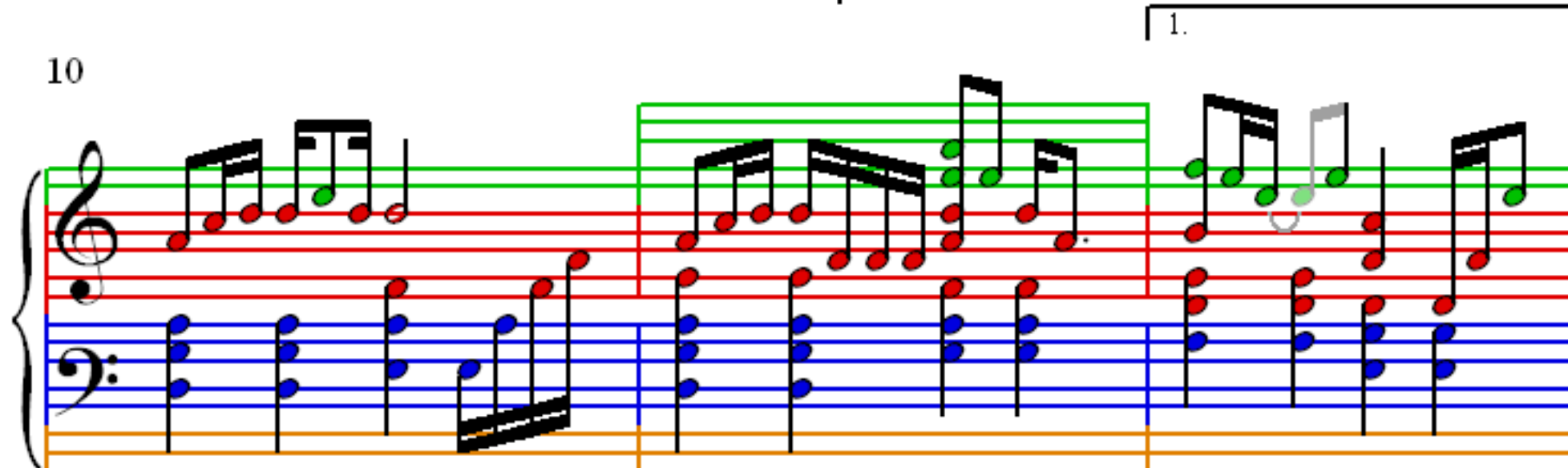
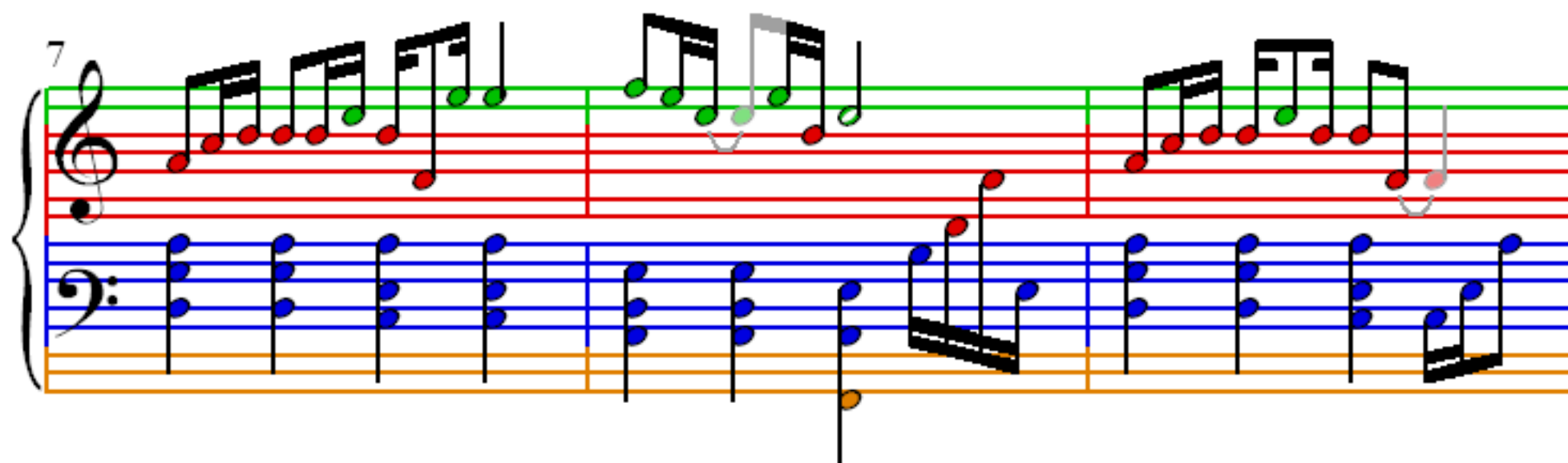
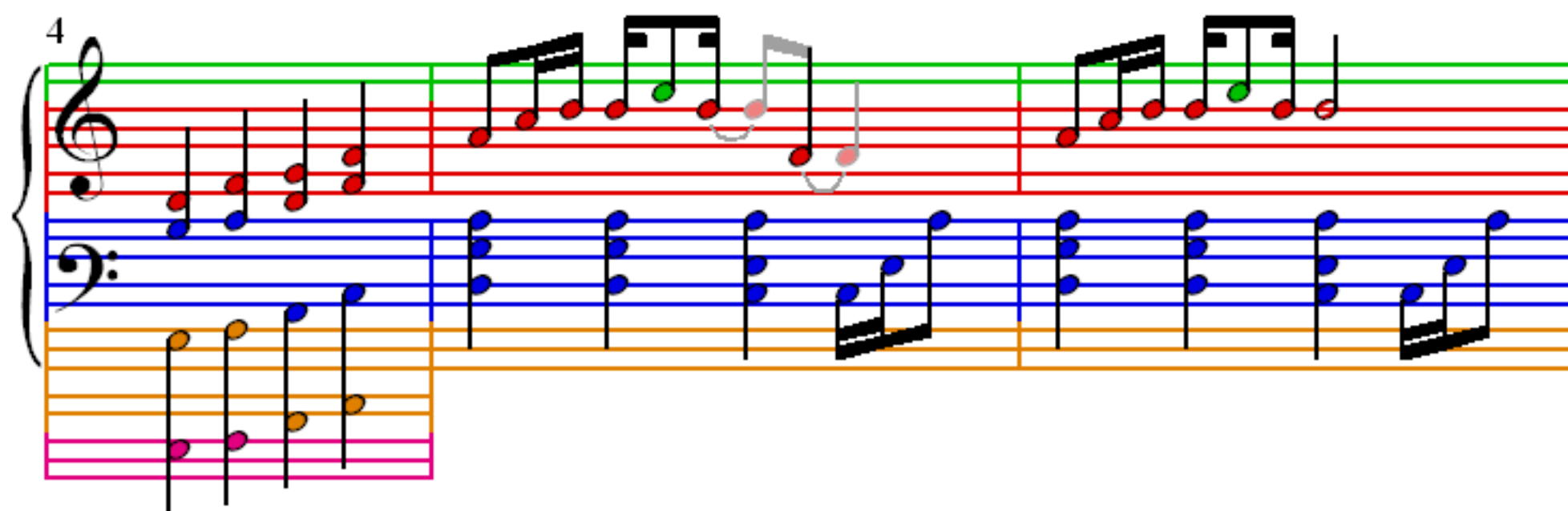
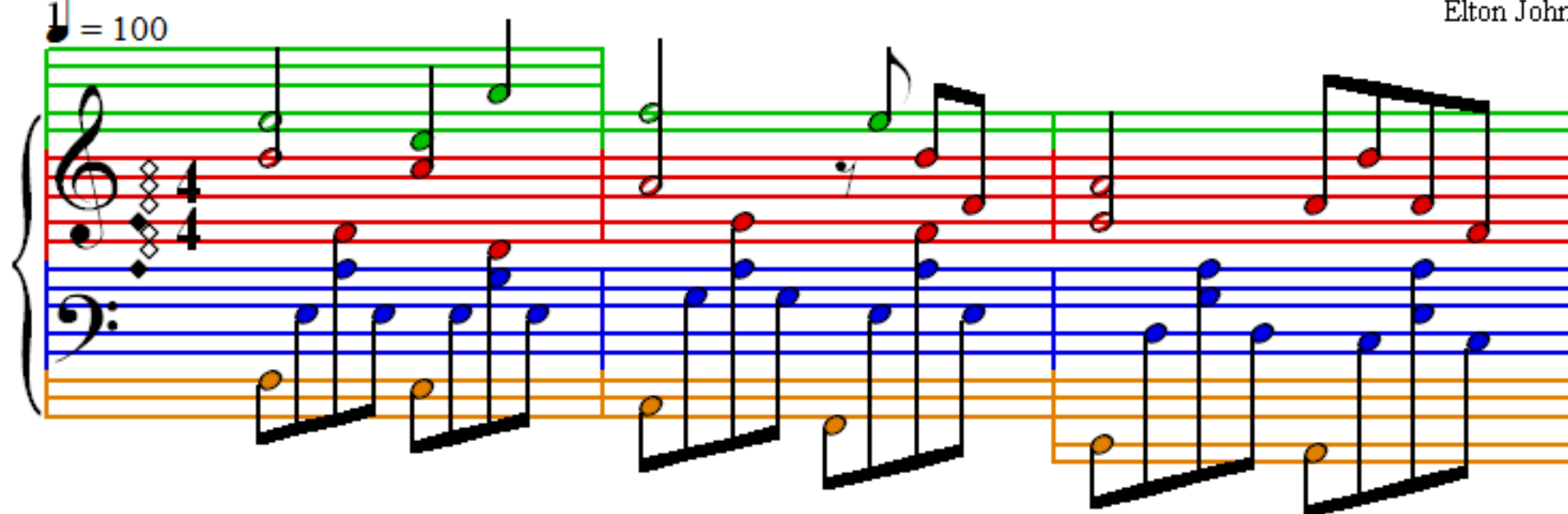


# Can You Feel the Love Tonight

Elton John

♩ = 100



13

16

19

22

25

Measures 25-27 of a musical score. The score is written for piano on a grand staff with treble and bass clefs. The music is in 4/4 time. The notes are color-coded: purple for the melody in the treble clef, green for the inner voices, red for the bass line, blue for the bass clef notes, orange for the bass clef notes, and pink for the bass clef notes. The melody in measure 25 starts with a quarter rest, followed by a quarter note G4, a quarter note A4, and a quarter note B4. In measure 26, the melody starts with a quarter note G4, a quarter note A4, a quarter note B4, and a quarter note C5. In measure 27, the melody starts with a quarter note G4, a quarter note A4, a quarter note B4, and a quarter note C5. The bass line in measure 25 starts with a quarter note G2, a quarter note A2, a quarter note B2, and a quarter note C3. In measure 26, the bass line starts with a quarter note G2, a quarter note A2, a quarter note B2, and a quarter note C3. In measure 27, the bass line starts with a quarter note G2, a quarter note A2, a quarter note B2, and a quarter note C3.

28

Measures 28-30 of a musical score. The score is written for piano on a grand staff with treble and bass clefs. The music is in 4/4 time. The notes are color-coded: purple for the melody in the treble clef, green for the inner voices, red for the bass line, blue for the bass clef notes, orange for the bass clef notes, and pink for the bass clef notes. The melody in measure 28 starts with a quarter note G4, a quarter note A4, a quarter note B4, and a quarter note C5. In measure 29, the melody starts with a quarter note G4, a quarter note A4, a quarter note B4, and a quarter note C5. In measure 30, the melody starts with a quarter note G4, a quarter note A4, a quarter note B4, and a quarter note C5. The bass line in measure 28 starts with a quarter note G2, a quarter note A2, a quarter note B2, and a quarter note C3. In measure 29, the bass line starts with a quarter note G2, a quarter note A2, a quarter note B2, and a quarter note C3. In measure 30, the bass line starts with a quarter note G2, a quarter note A2, a quarter note B2, and a quarter note C3.

31

Measures 31-33 of a musical score. The score is written for piano on a grand staff with treble and bass clefs. The music is in 4/4 time. The notes are color-coded: purple for the melody in the treble clef, green for the inner voices, red for the bass line, blue for the bass clef notes, orange for the bass clef notes, and pink for the bass clef notes. The melody in measure 31 starts with a quarter note G4, a quarter note A4, a quarter note B4, and a quarter note C5. In measure 32, the melody starts with a quarter note G4, a quarter note A4, a quarter note B4, and a quarter note C5. In measure 33, the melody starts with a quarter note G4, a quarter note A4, a quarter note B4, and a quarter note C5. The bass line in measure 31 starts with a quarter note G2, a quarter note A2, a quarter note B2, and a quarter note C3. In measure 32, the bass line starts with a quarter note G2, a quarter note A2, a quarter note B2, and a quarter note C3. In measure 33, the bass line starts with a quarter note G2, a quarter note A2, a quarter note B2, and a quarter note C3.

34

Measures 34-36 of the musical score. The score is written for piano with a grand staff (treble and bass clefs). The music is in 4/4 time. The melody is in the treble clef, and the bass line is in the bass clef. The notes are color-coded: purple for the melody, green for the bass line, red for the right hand, blue for the left hand, and orange for the bass line. The melody consists of eighth and sixteenth notes, and the bass line consists of eighth and sixteenth notes. The right hand plays a series of chords, and the left hand plays a series of chords. The music is in a key of C major.

37

Measures 37-39 of the musical score. The score is written for piano with a grand staff (treble and bass clefs). The music is in 4/4 time. The melody is in the treble clef, and the bass line is in the bass clef. The notes are color-coded: purple for the melody, green for the bass line, red for the right hand, blue for the left hand, and orange for the bass line. The melody consists of eighth and sixteenth notes, and the bass line consists of eighth and sixteenth notes. The right hand plays a series of chords, and the left hand plays a series of chords. The music is in a key of C major.

40

Measures 40-42 of the musical score. The score is written for piano with a grand staff (treble and bass clefs). The music is in 4/4 time. The melody is in the treble clef, and the bass line is in the bass clef. The notes are color-coded: purple for the melody, green for the bass line, red for the right hand, blue for the left hand, and orange for the bass line. The melody consists of eighth and sixteenth notes, and the bass line consists of eighth and sixteenth notes. The right hand plays a series of chords, and the left hand plays a series of chords. The music is in a key of C major.