

Peacherine Rag

S. Joplin (1868–1917)

1 = 80

Measures 1-4 of the Peacherine Rag. The music is in 2/4 time, marked with a tempo of 80. The key signature has one sharp (F#). The notation is presented in a grand staff with a treble clef on the top staff and a bass clef on the bottom staff. The notes are color-coded: green for the right hand and blue for the left hand. The first measure contains a treble staff with a quarter note F#4, an eighth note G#4, and a quarter note A4, followed by a bass staff with a quarter note F#2, an eighth note G#2, and a quarter note A2. The second measure contains a treble staff with a quarter note B4, an eighth note C#5, and a quarter note D5, followed by a bass staff with a quarter note B1, an eighth note C#2, and a quarter note D2. The third measure contains a treble staff with a quarter note E5, an eighth note F#5, and a quarter note G5, followed by a bass staff with a quarter note E2, an eighth note F#2, and a quarter note G2. The fourth measure contains a treble staff with a quarter note A5, an eighth note B5, and a quarter note C6, followed by a bass staff with a quarter note A2, an eighth note B2, and a quarter note C3.

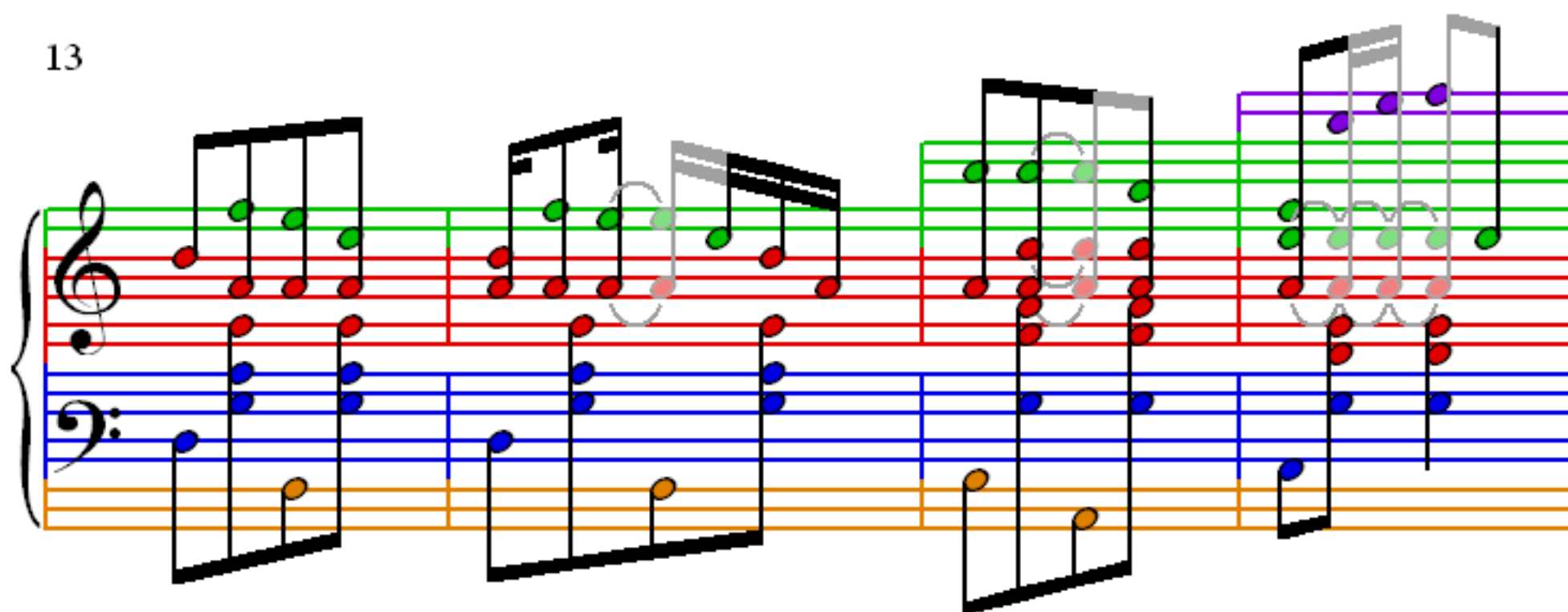
5

Measures 5-8 of the Peacherine Rag. The notation continues in the same grand staff format. The fifth measure contains a treble staff with a quarter note D5, an eighth note E5, and a quarter note F#5, followed by a bass staff with a quarter note D2, an eighth note E2, and a quarter note F#2. The sixth measure contains a treble staff with a quarter note G5, an eighth note A5, and a quarter note B5, followed by a bass staff with a quarter note G2, an eighth note A2, and a quarter note B2. The seventh measure contains a treble staff with a quarter note C6, an eighth note D6, and a quarter note E6, followed by a bass staff with a quarter note C2, an eighth note D2, and a quarter note E2. The eighth measure contains a treble staff with a quarter note F#5, an eighth note G#5, and a quarter note A5, followed by a bass staff with a quarter note F#2, an eighth note G#2, and a quarter note A2.

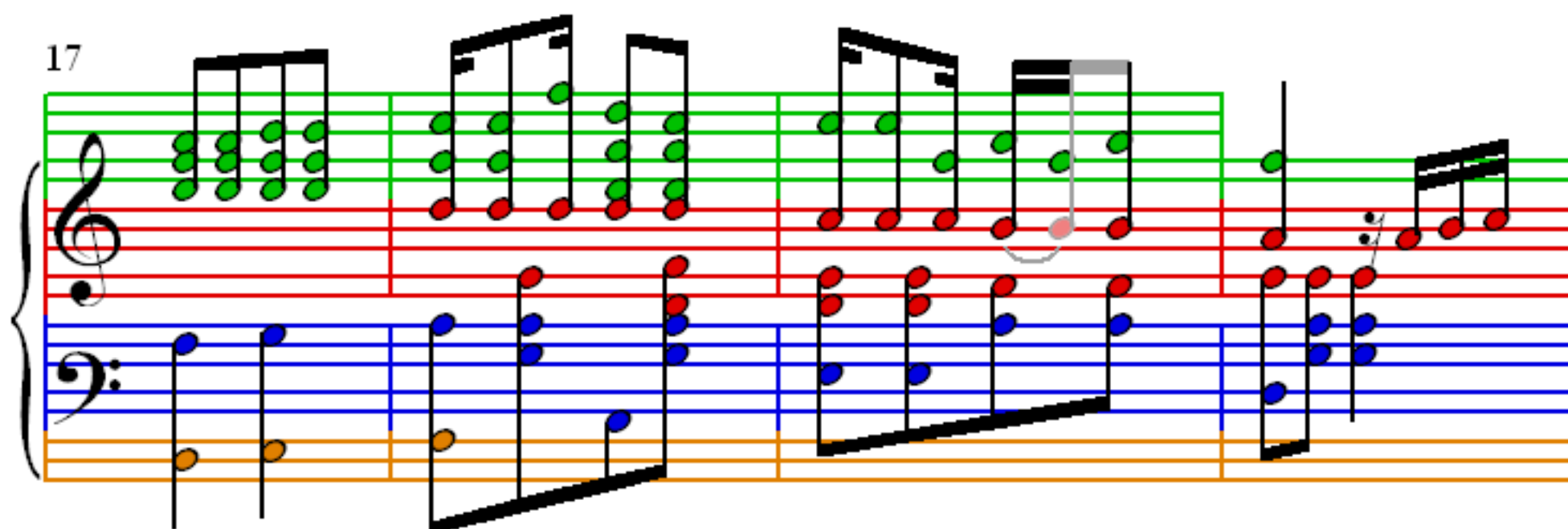
9

Measures 9-12 of the Peacherine Rag. The notation continues in the same grand staff format. The ninth measure contains a treble staff with a quarter note B5, an eighth note C#6, and a quarter note D6, followed by a bass staff with a quarter note B2, an eighth note C#2, and a quarter note D2. The tenth measure contains a treble staff with a quarter note C6, an eighth note D6, and a quarter note E6, followed by a bass staff with a quarter note C2, an eighth note D2, and a quarter note E2. The eleventh measure contains a treble staff with a quarter note D6, an eighth note E6, and a quarter note F#6, followed by a bass staff with a quarter note D2, an eighth note E2, and a quarter note F#2. The twelfth measure contains a treble staff with a quarter note E6, an eighth note F#6, and a quarter note G6, followed by a bass staff with a quarter note E2, an eighth note F#2, and a quarter note G2.

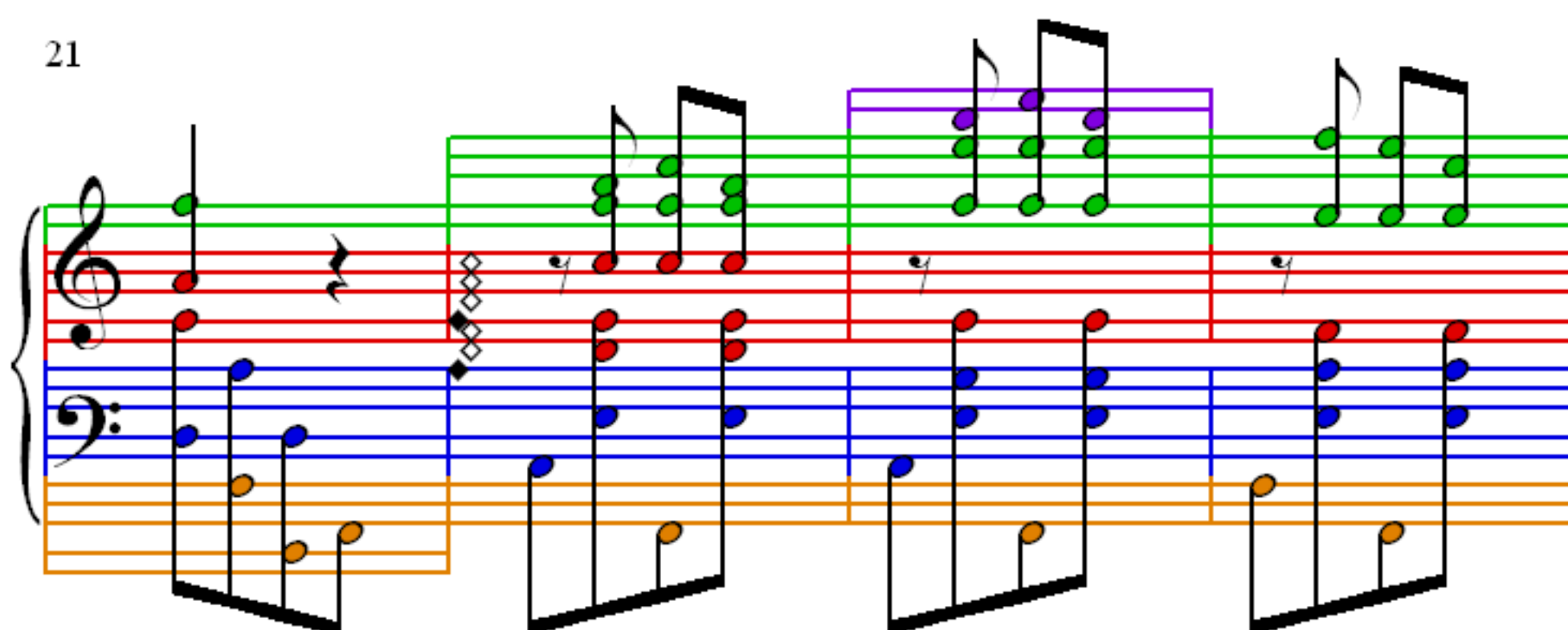
13



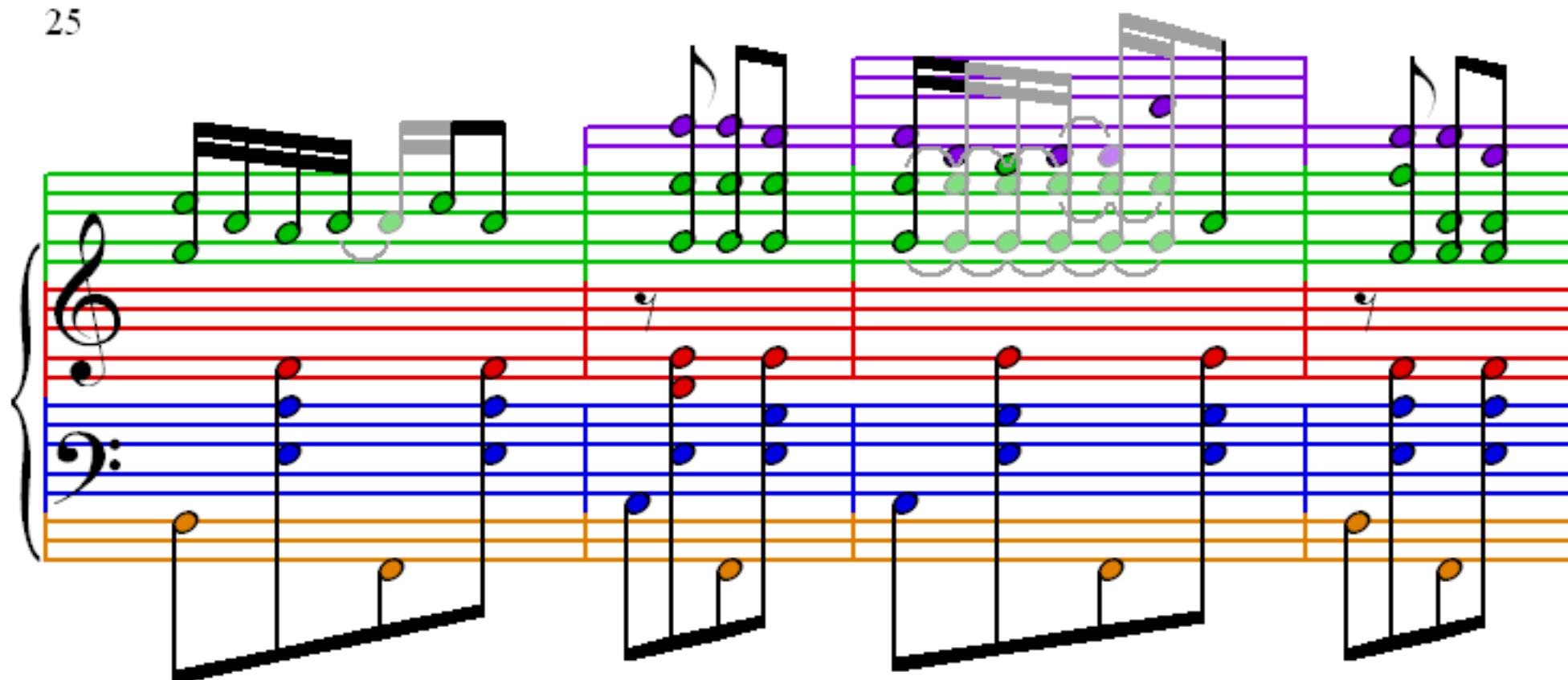
17



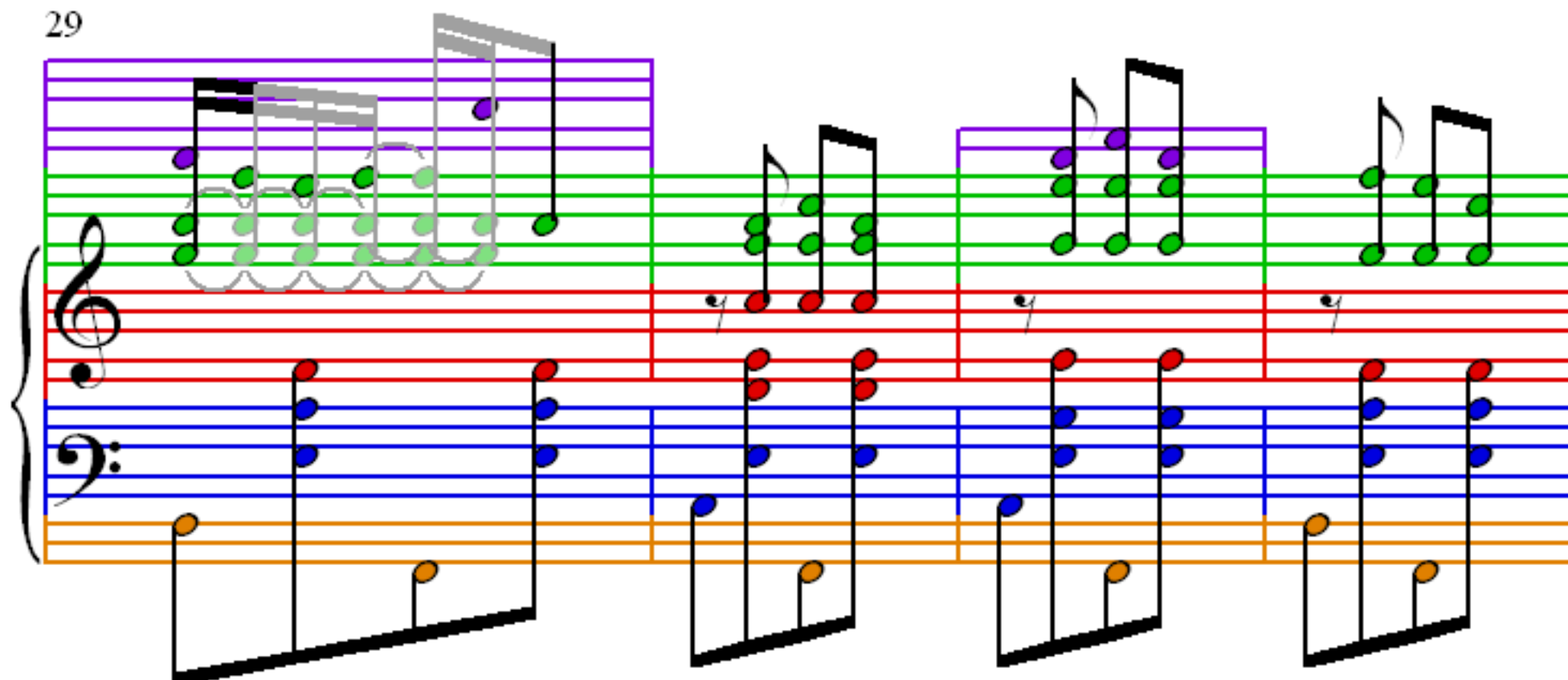
21



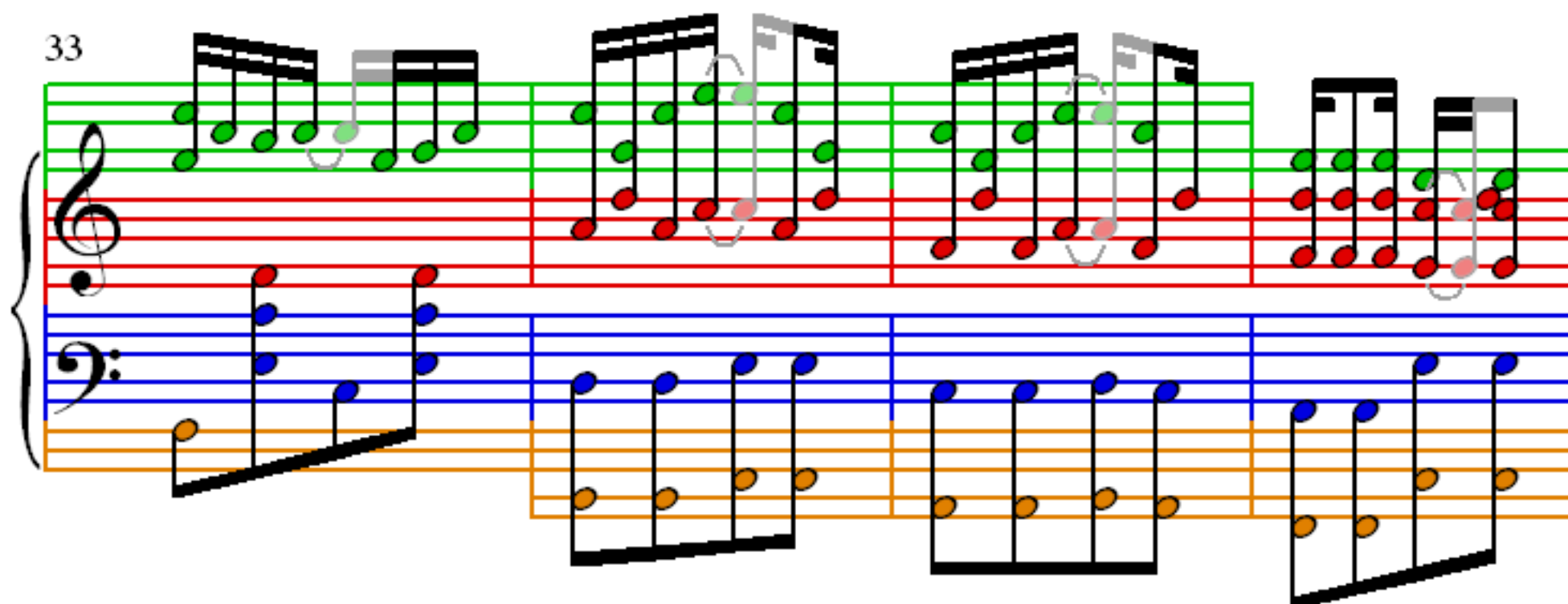
25



29



33



37

Measures 37-40 of the musical score. The notation includes treble and bass staves with various notes and rests. A pink circle highlights a chord in measure 39.

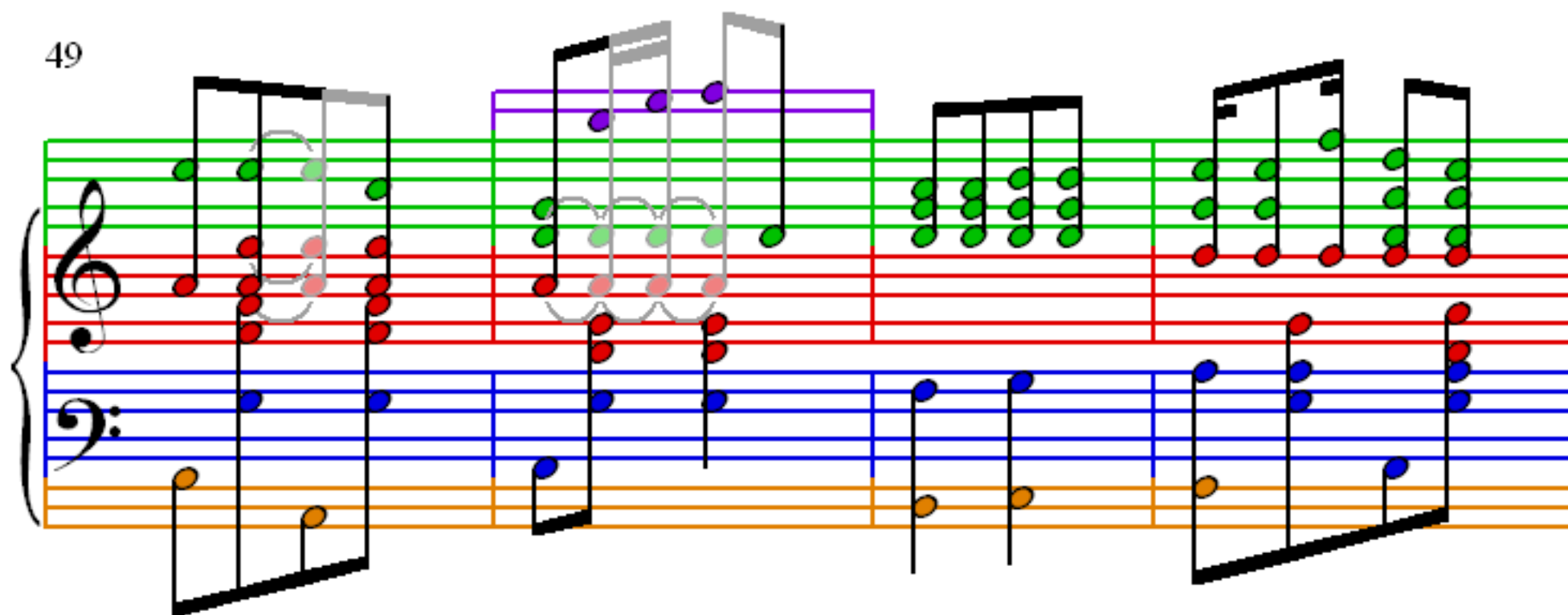
41

Measures 41-44 of the musical score. The notation includes treble and bass staves with various notes and rests. A pink circle highlights a chord in measure 42.

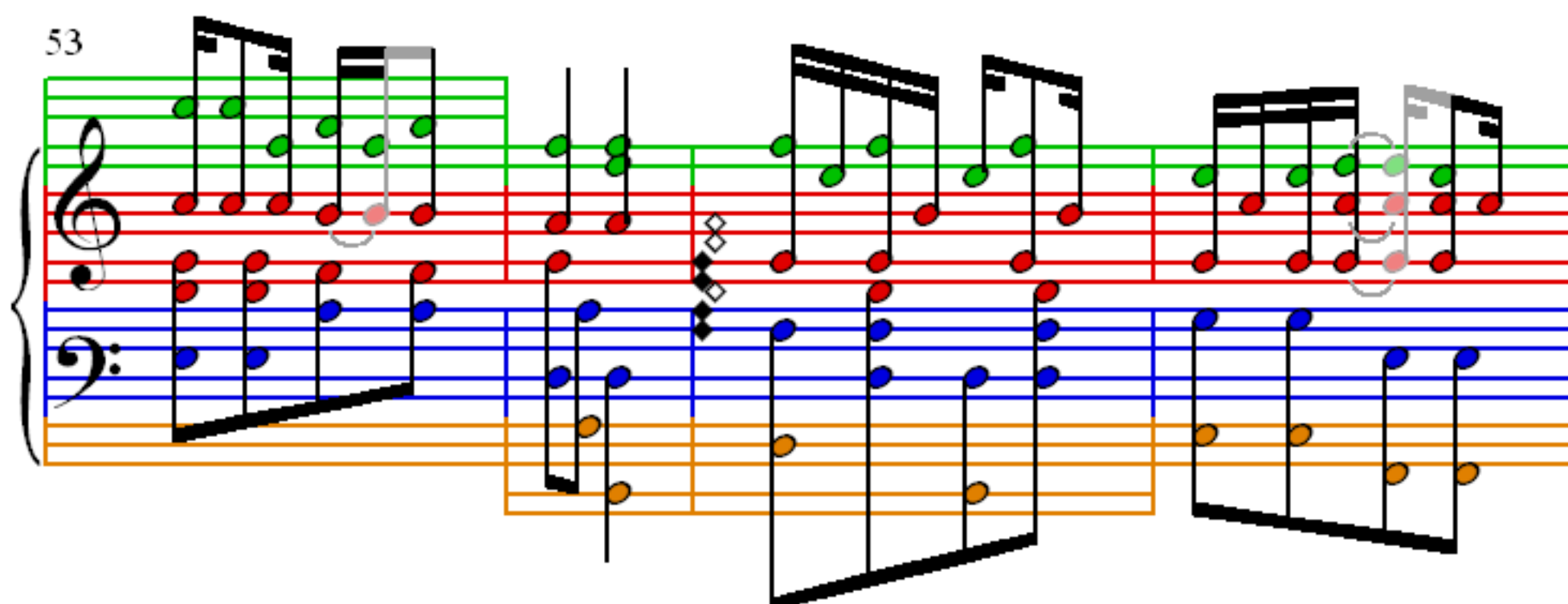
45

Measures 45-48 of the musical score. The notation includes treble and bass staves with various notes and rests. A pink circle highlights a chord in measure 46.

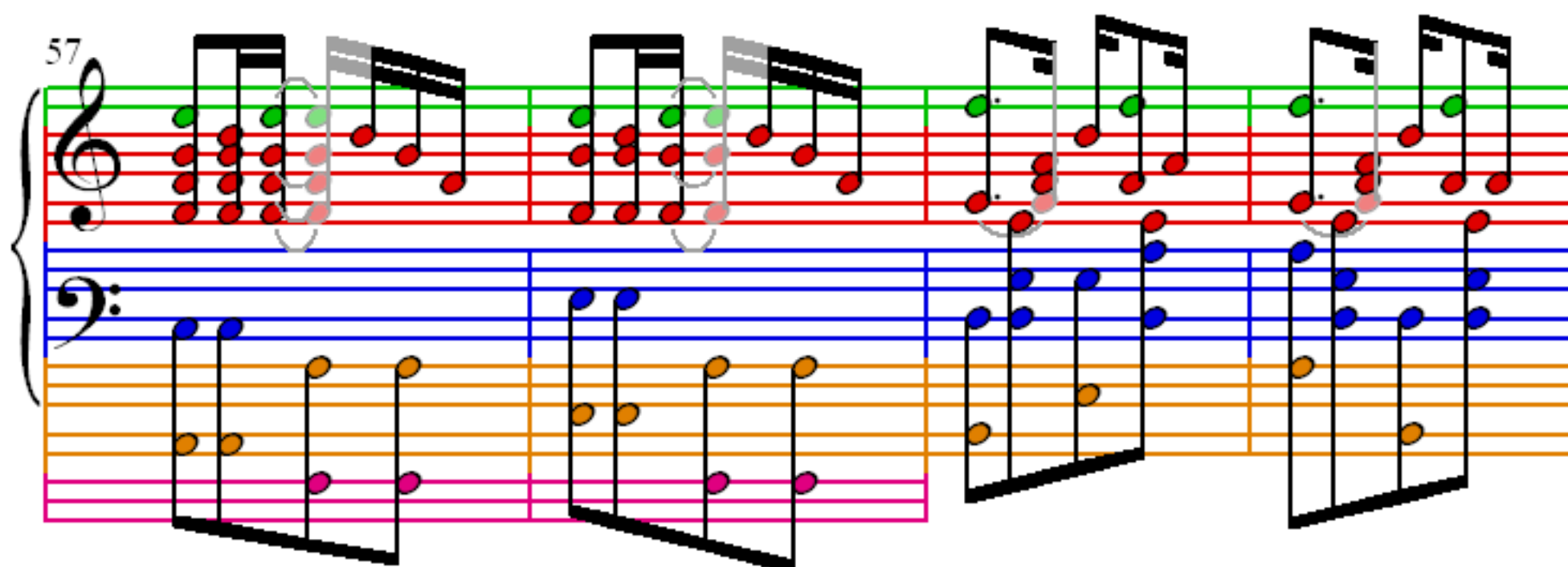
49



53



57



61

Measures 61-64 of Peacherine Rag. The treble staff features a repeating eighth-note pattern with some notes highlighted in green and red. The bass staff provides a steady accompaniment with blue and orange notes.

65

Measures 65-68 of Peacherine Rag. The treble staff continues the eighth-note pattern, with some notes highlighted in green and red. The bass staff continues the accompaniment with blue and orange notes.

69

Measures 69-72 of Peacherine Rag. The treble staff continues the eighth-note pattern, with some notes highlighted in green and red. The bass staff continues the accompaniment with blue and orange notes.

73

77

81

85

89