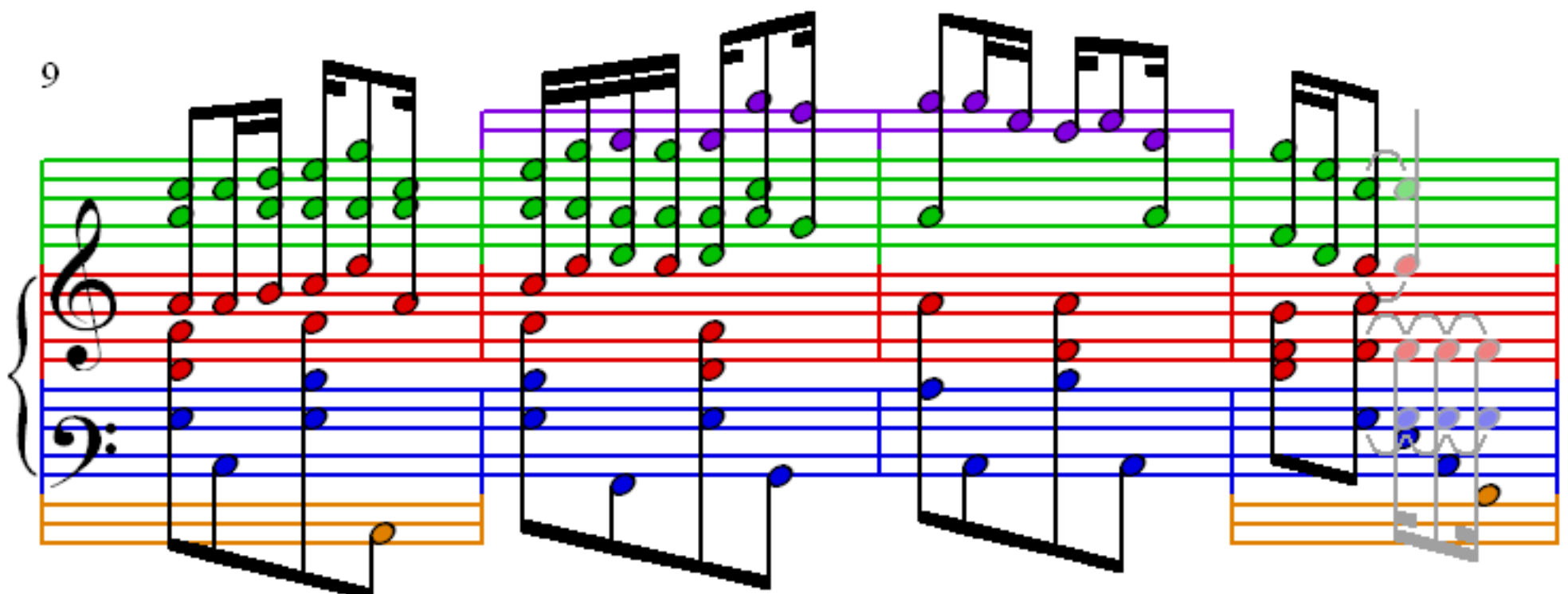
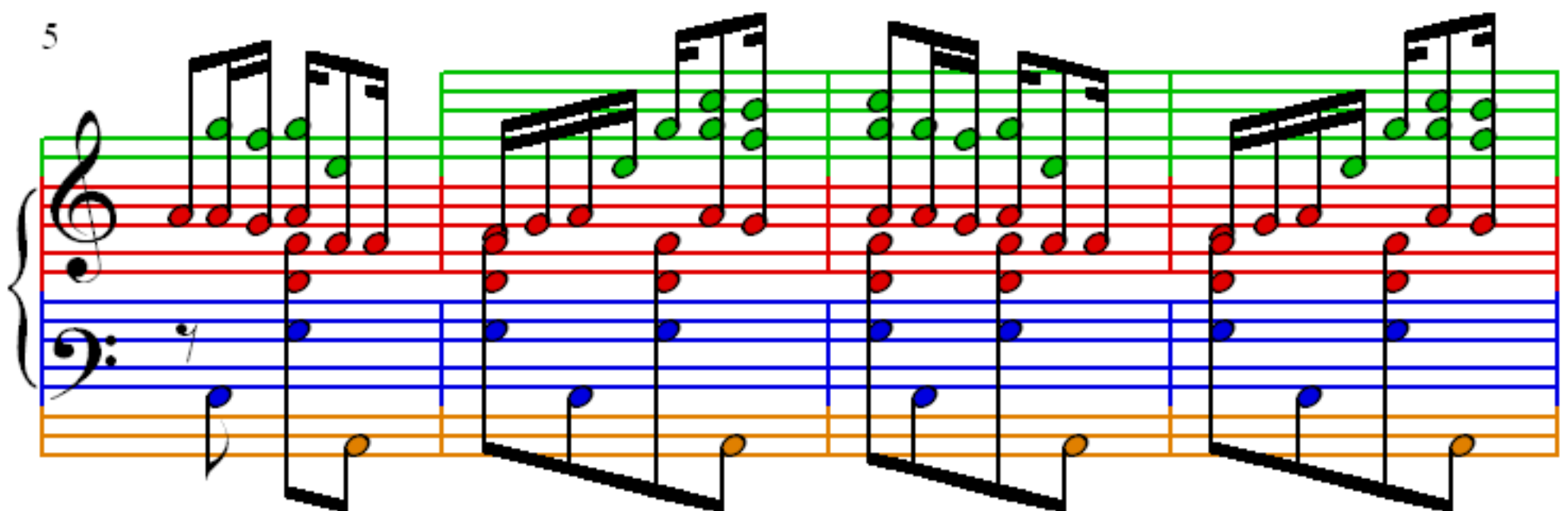
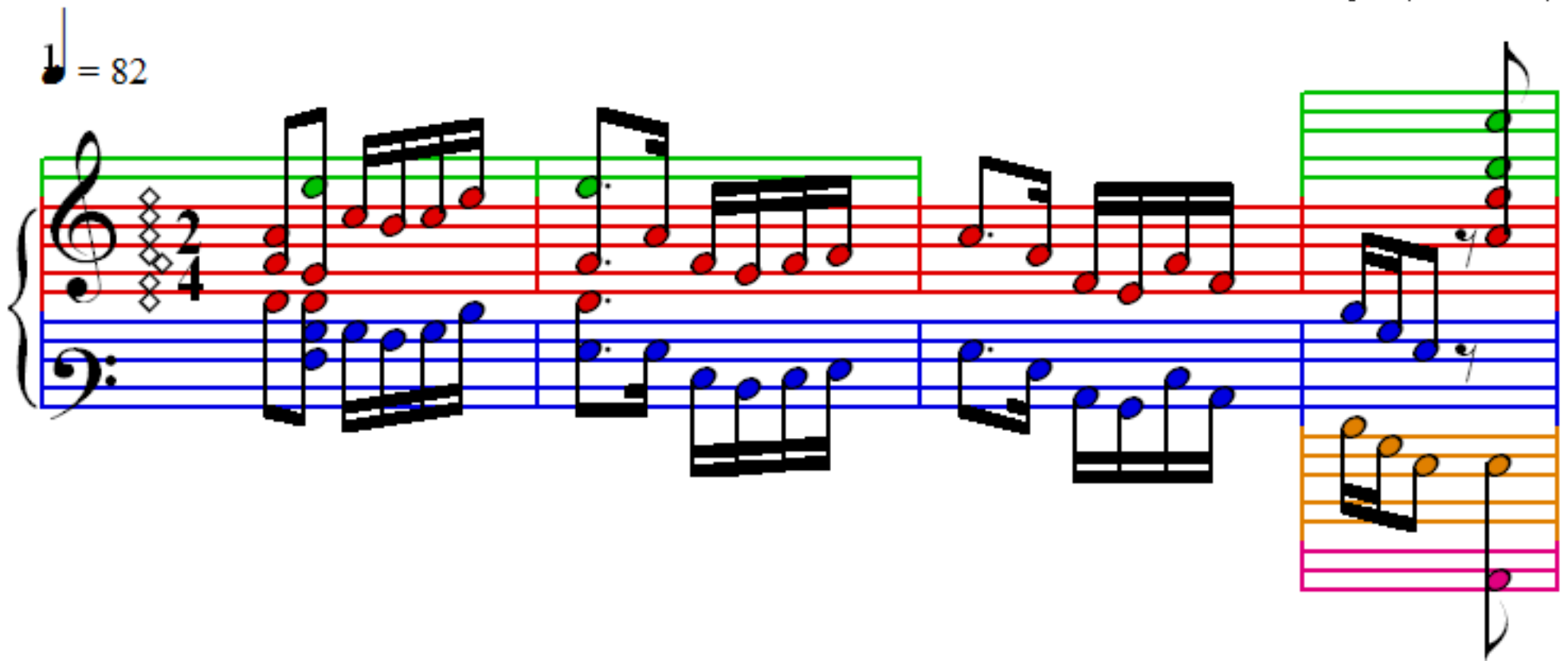


A Breeze From Alabama

S. Joplin (1868–1917)

$\text{♩} = 82$



13

This system contains measures 13 through 16. The treble clef staff features a melody with eighth-note runs, with notes colored green and red. The bass clef staff provides a harmonic accompaniment with blue notes. A single orange note is visible on a lower staff at the beginning of the system.

17

This system contains measures 17 through 20. Measures 17-19 follow the same pattern as the previous system. Measure 20 is a final measure for this system, featuring a pink note on a lower staff. The treble clef staff continues with green and red notes, while the bass clef staff uses blue notes.

21

This system contains measures 21 through 24. The treble clef staff continues with green and red notes. The bass clef staff uses blue notes. A single orange note is visible on a lower staff at the beginning of the system.

25

This system contains measures 25 through 28. The treble staff features a melody with eighth-note patterns, primarily colored green and red, with some purple notes in measures 26 and 27. The bass staff provides a harmonic accompaniment with blue and red notes. An orange staff at the bottom shows a simple bass line. A grey bracket in measure 28 groups the final notes of the treble and bass staves.

29

This system contains measures 29 through 32. The treble staff continues the melody with eighth-note patterns, mostly green and red. The bass staff has blue and red notes. The orange staff at the bottom continues the simple bass line. The system ends with a double bar line in measure 32.

33

This system contains measures 33 through 36. The treble staff has a melody with eighth notes, mostly green and red. The bass staff has blue and red notes. The orange staff at the bottom has a simple bass line. A purple box highlights the final measure (36) in the treble staff. A grey bracket in measure 35 groups the final notes of the treble and bass staves.

37

This system contains measures 37 through 40. The treble clef staff features a melody with green and red notes, including a circled measure at the end. The bass clef staff provides a harmonic accompaniment with blue and orange notes. The music is written in a 4/4 time signature.

41

This system contains measures 41 through 44. The treble clef staff continues the melody with green and red notes, featuring a circled measure at the end. The bass clef staff continues the accompaniment with blue and orange notes. The music is written in a 4/4 time signature.

45

This system contains measures 45 through 48. The treble clef staff continues the melody with green and red notes, featuring a circled measure at the end. The bass clef staff continues the accompaniment with blue and orange notes. The music is written in a 4/4 time signature.

49

This system contains measures 49 through 52. The treble clef staff features a melody with eighth and sixteenth notes, some marked with a grey hairpin. The bass clef staff provides a harmonic accompaniment with chords and single notes. The system is color-coded with purple, green, red, and blue staves. A grey oval highlights a measure in the bass staff at the end of the system.

53

This system contains measures 53 through 56. The treble clef staff continues the melody with various note values. The bass clef staff shows a steady accompaniment. The system is color-coded with purple, green, red, and blue staves. A grey oval highlights a measure in the treble staff near the end of the system.

57

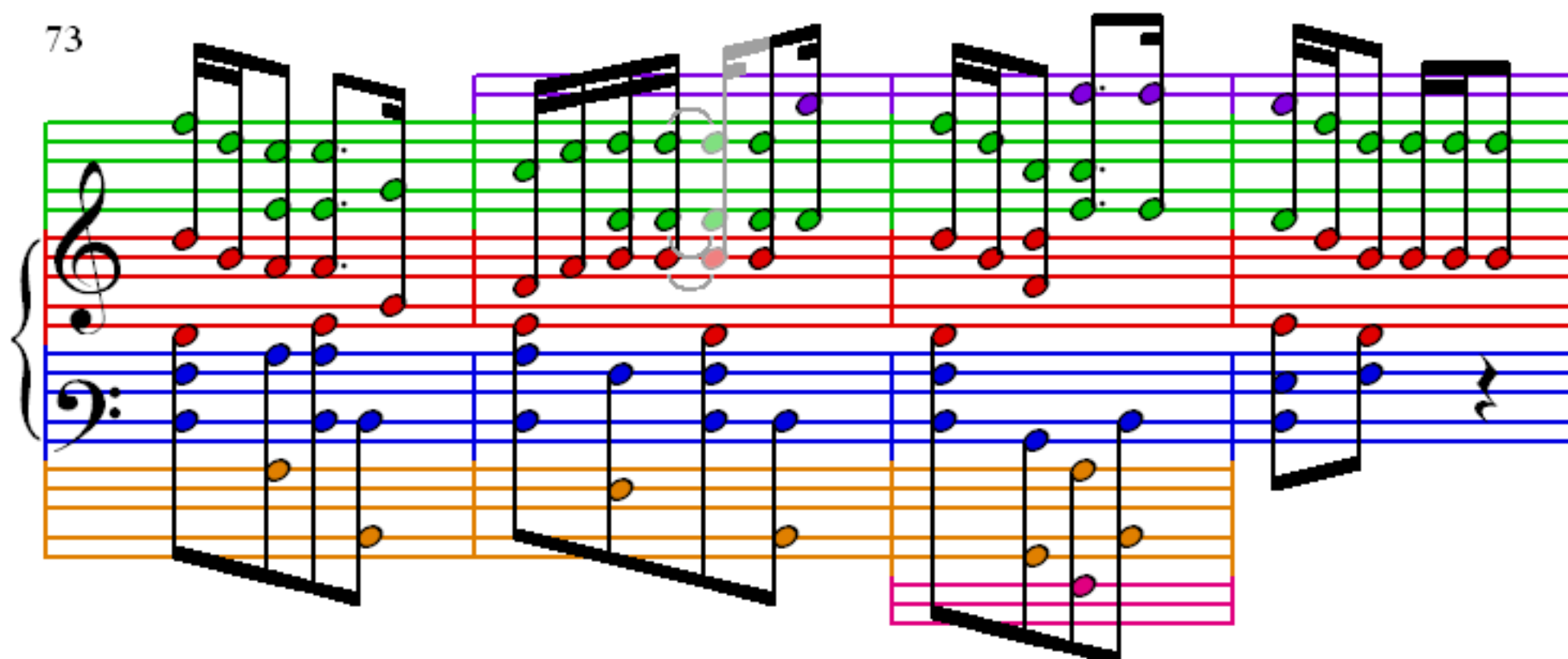
This system contains measures 57 through 60. The treble clef staff features a melody with eighth and sixteenth notes. The bass clef staff provides a harmonic accompaniment. The system is color-coded with purple, green, red, and blue staves. A grey oval highlights a measure in the treble staff at the end of the system.

61

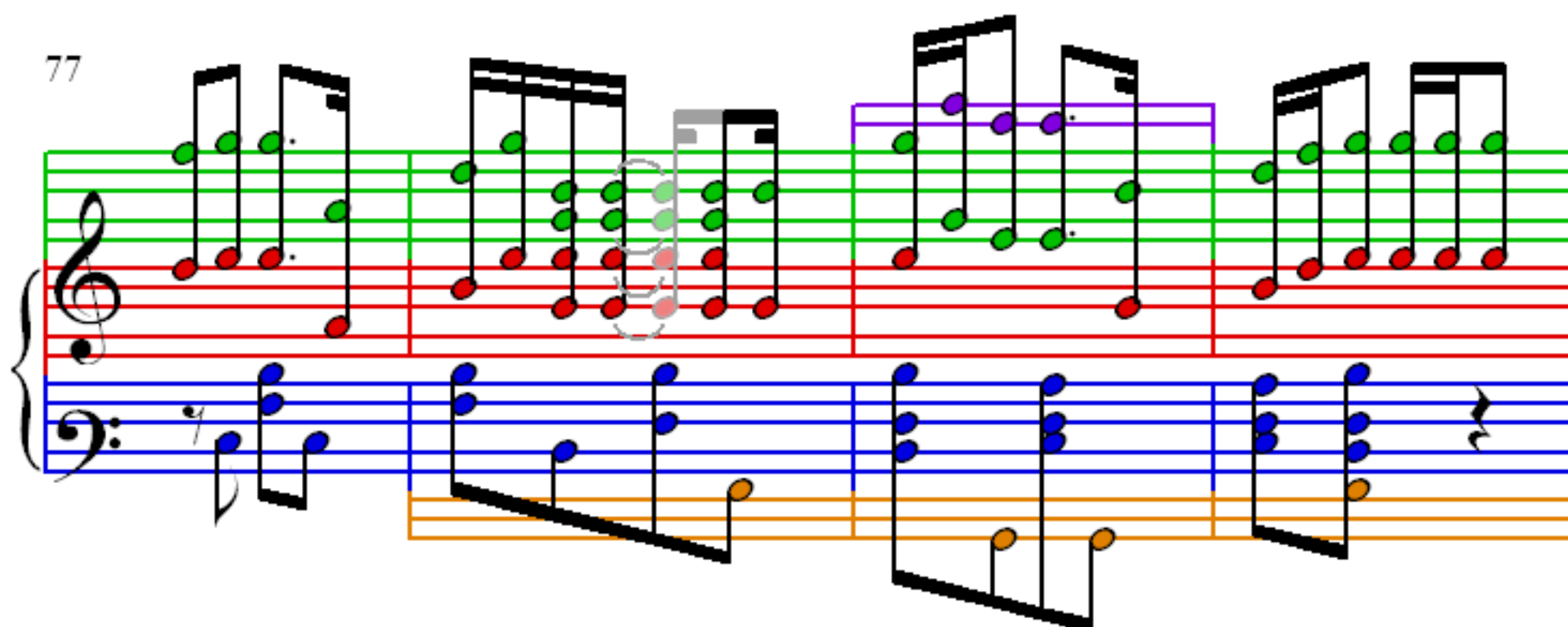
65

69

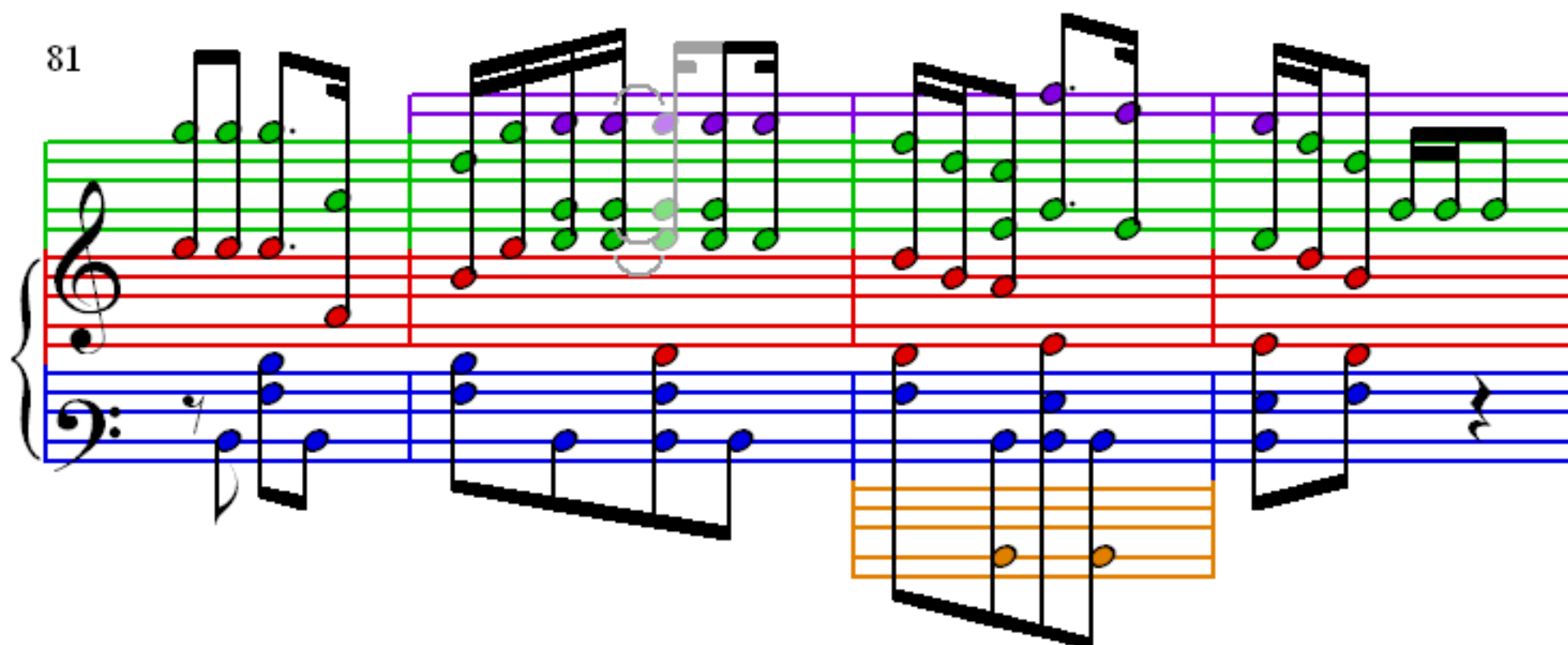
73



77



81



85

Measures 85-88 of the musical score. The treble clef staff features a melody with green and purple notes, while the bass clef staff provides a harmonic accompaniment with blue and orange notes. The music is divided into four measures, each with a distinct melodic and harmonic structure. The notes are color-coded to highlight specific intervals and chord progressions.

89

Measures 89-92 of the musical score. The treble clef staff continues the melody with green and purple notes, and the bass clef staff provides a harmonic accompaniment with blue and orange notes. The music is divided into four measures, each with a distinct melodic and harmonic structure. The notes are color-coded to highlight specific intervals and chord progressions.

93

Measures 93-96 of the musical score. The treble clef staff features a melody with green and purple notes, while the bass clef staff provides a harmonic accompaniment with blue and orange notes. The music is divided into four measures, each with a distinct melodic and harmonic structure. The notes are color-coded to highlight specific intervals and chord progressions.

97

This system contains measures 97 through 100. The treble staff features a melody with green and purple notes, while the bass staff provides accompaniment with blue and orange notes. Measure 98 includes a greyed-out section. Measure 100 ends with a fermata over a blue note in the bass staff.

101

This system contains measures 101 through 104. The treble staff continues the melody with green and purple notes. The bass staff accompaniment uses blue and orange notes. Measure 104 concludes with a fermata over a blue note in the bass staff.

105

This system contains measures 105 through 108. The treble staff features a melody with green and purple notes. The bass staff accompaniment uses blue and orange notes. Measure 108 ends with a fermata over a blue note in the bass staff.

109

This system contains measures 109 through 112. The treble clef staff features a melody with eighth and sixteenth notes, some of which are highlighted in green. The bass clef staff provides a harmonic accompaniment with chords and single notes, some highlighted in blue. The system is divided into four measures by bar lines.

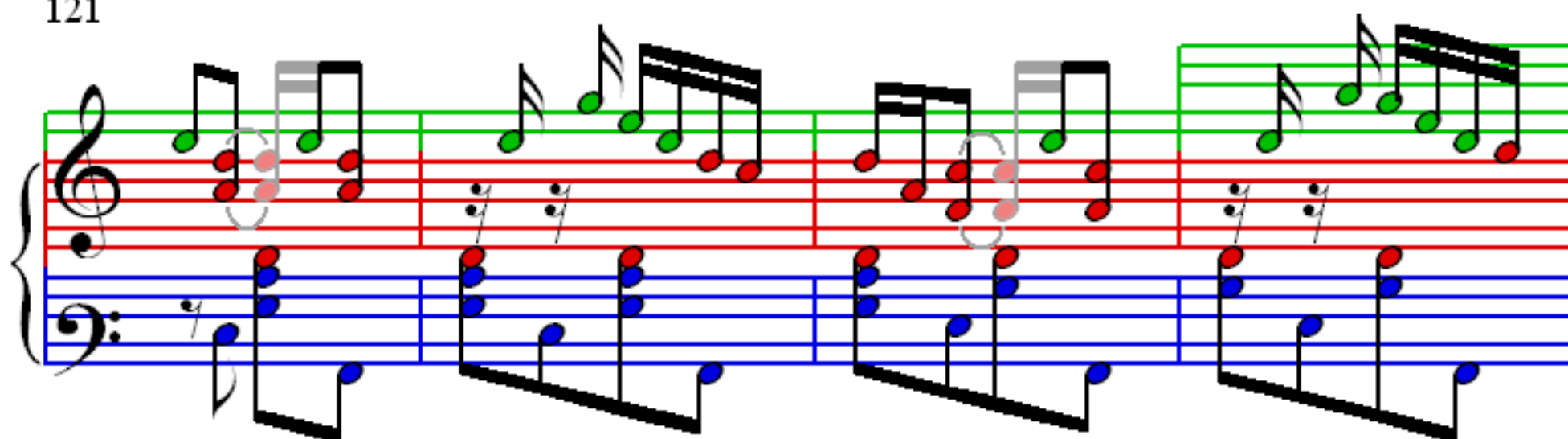
113

This system contains measures 113 through 116. The treble clef staff continues the melody, with green highlights on specific notes. The bass clef staff continues the accompaniment with blue highlights. The system is divided into four measures by bar lines.

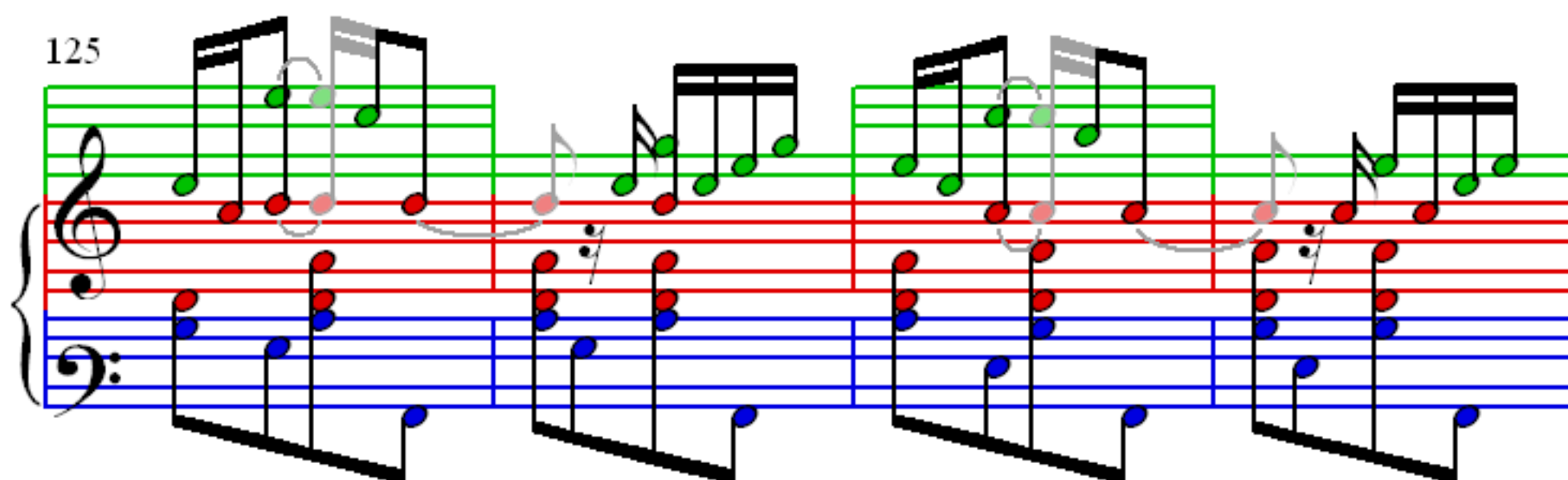
117

This system contains measures 117 through 120. The treble clef staff shows the melody, with a purple highlight on a note in measure 118. The bass clef staff shows the accompaniment. The system is divided into four measures by bar lines.

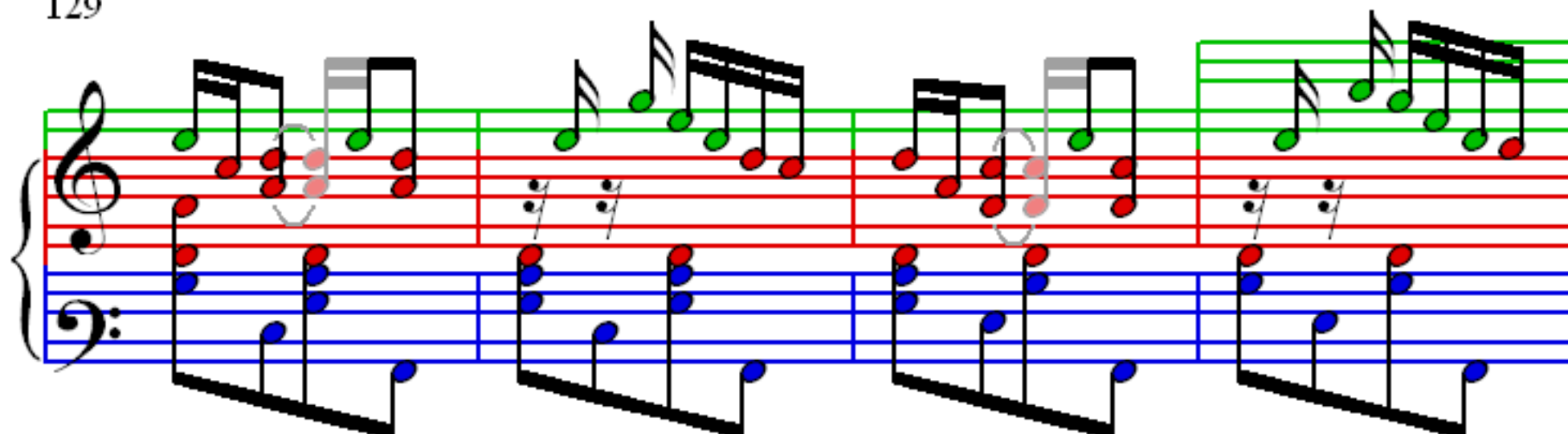
121



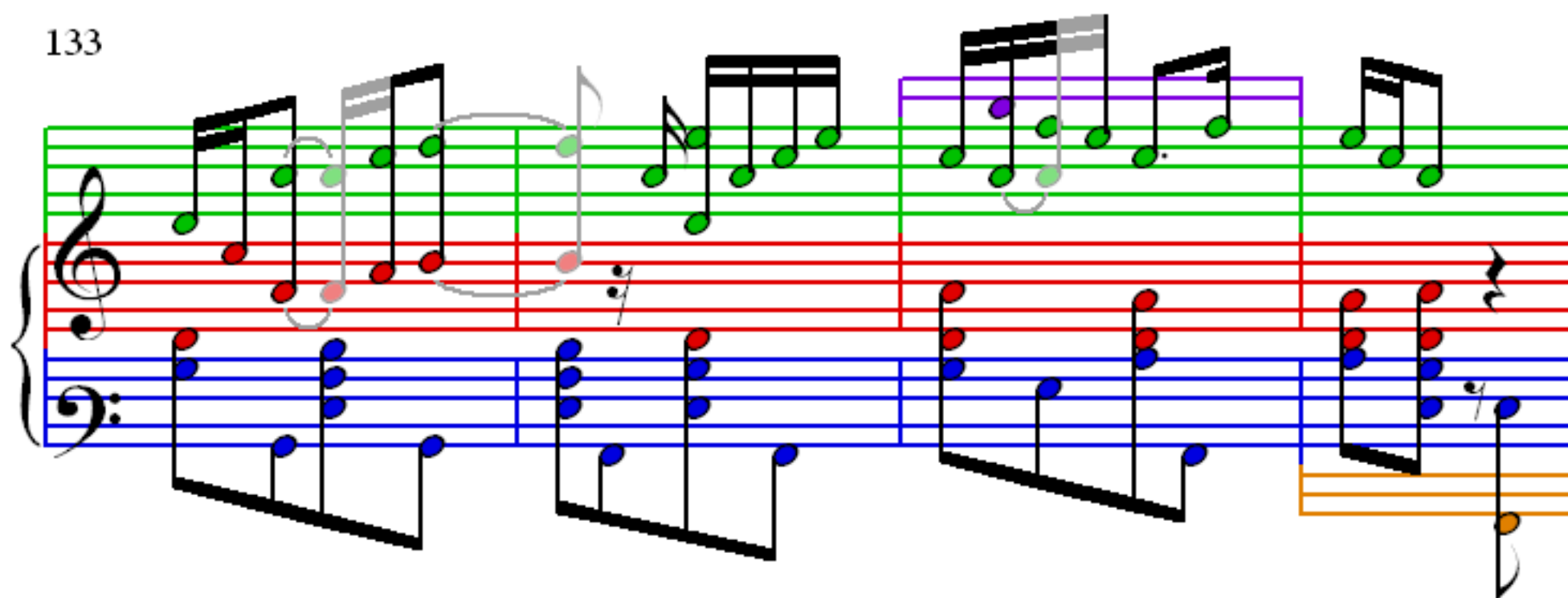
125



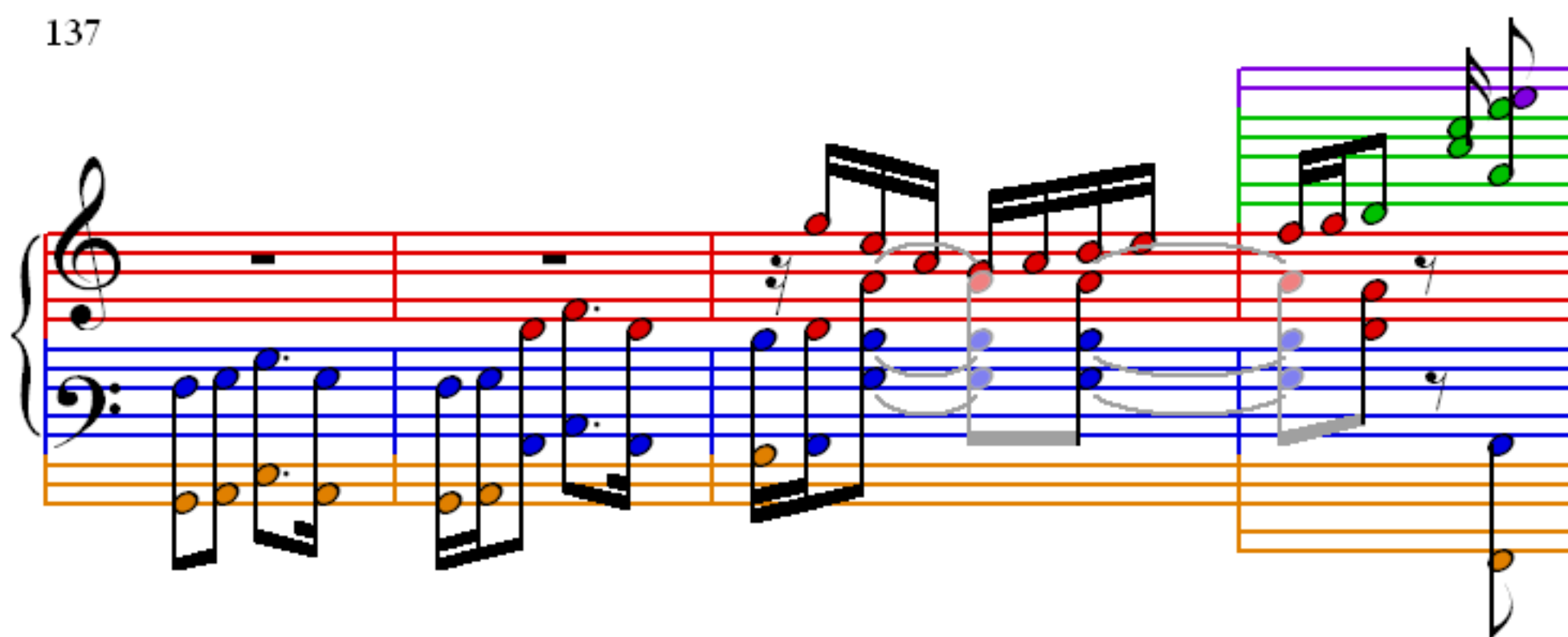
129



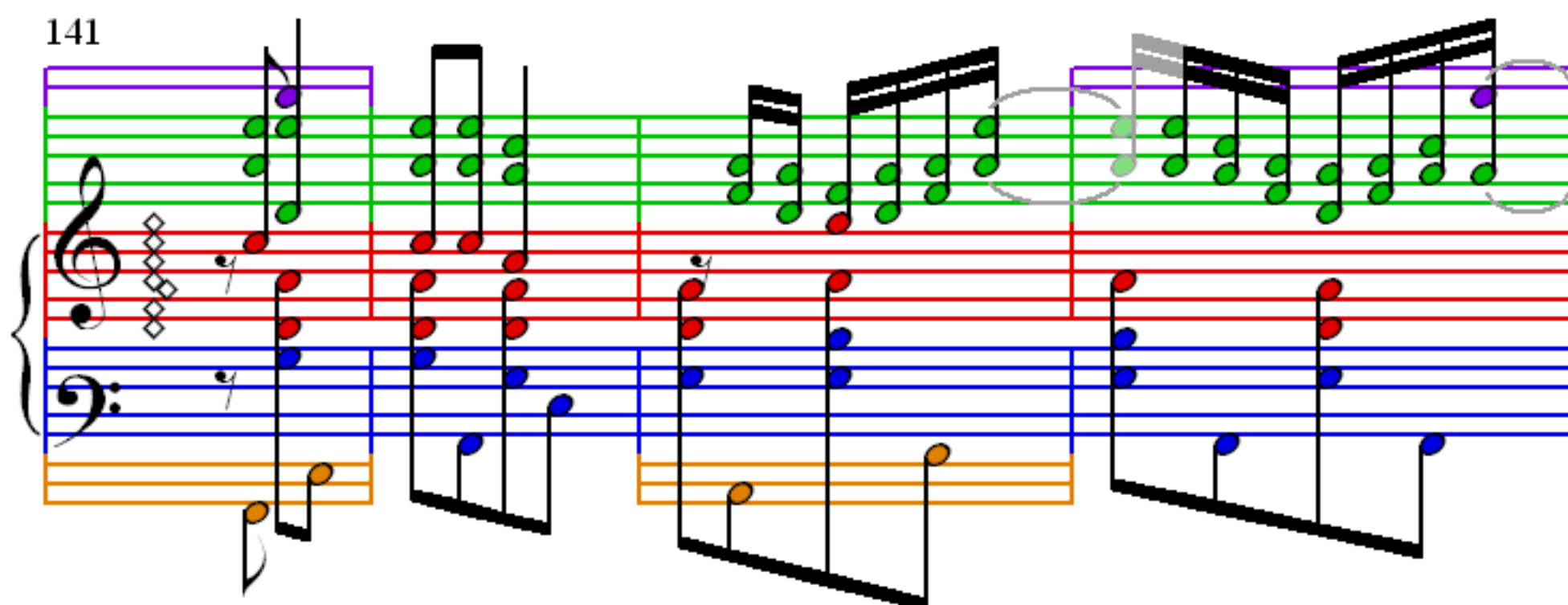
133



137



141



145

This system contains measures 145 through 148. The treble staff features a melody with eighth and sixteenth notes, often beamed together. The bass staff provides a harmonic accompaniment with chords and single notes. The piano part includes a steady eighth-note accompaniment in the lower register. Measure 148 concludes with a final chord in the treble and a sustained note in the bass.

149

This system contains measures 149 through 152. The melody continues with similar rhythmic patterns. In measure 152, the treble staff has a final chord, and the bass staff has a sustained note. The piano accompaniment remains consistent throughout the system.

153

This system contains measures 153 through 156. The melody continues with similar rhythmic patterns. In measure 156, the treble staff has a final chord, and the bass staff has a sustained note. The piano accompaniment remains consistent throughout the system.

157

This system contains measures 157 through 160. The treble clef staff features a melody with green and red notes, while the bass clef staff provides a harmonic accompaniment with blue and orange notes. Measure 157 begins with a treble staff measure containing a whole note chord and a bass staff measure with a half note. Measures 158 and 159 each consist of a treble staff measure with a half note and a bass staff measure with a half note. Measure 160 is a final measure with a treble staff measure containing a whole note chord and a bass staff measure with a half note. The system is divided into four measures by vertical bar lines.

161

This system contains measures 161 through 164. The treble clef staff features a melody with green and red notes, while the bass clef staff provides a harmonic accompaniment with blue and orange notes. Measure 161 begins with a treble staff measure containing a whole note chord and a bass staff measure with a half note. Measures 162 and 163 each consist of a treble staff measure with a half note and a bass staff measure with a half note. Measure 164 is a final measure with a treble staff measure containing a whole note chord and a bass staff measure with a half note. The system is divided into four measures by vertical bar lines.

165

This system contains measures 165 through 168. The treble clef staff features a melody with green and red notes, while the bass clef staff provides a harmonic accompaniment with blue and orange notes. Measure 165 begins with a treble staff measure containing a whole note chord and a bass staff measure with a half note. Measures 166 and 167 each consist of a treble staff measure with a half note and a bass staff measure with a half note. Measure 168 is a final measure with a treble staff measure containing a whole note chord and a bass staff measure with a half note. The system is divided into four measures by vertical bar lines.

169

This musical score segment covers measures 169 through 172. It is written for a piano with a treble and bass staff. The treble staff features a melody with notes colored purple, green, and red, and is accompanied by a purple bracket. The bass staff features a bass line with notes colored red, blue, and orange, and is accompanied by a blue bracket. The music is in 4/4 time and includes various musical notations such as eighth notes, quarter notes, and rests. A double bar line is present at the end of measure 172.