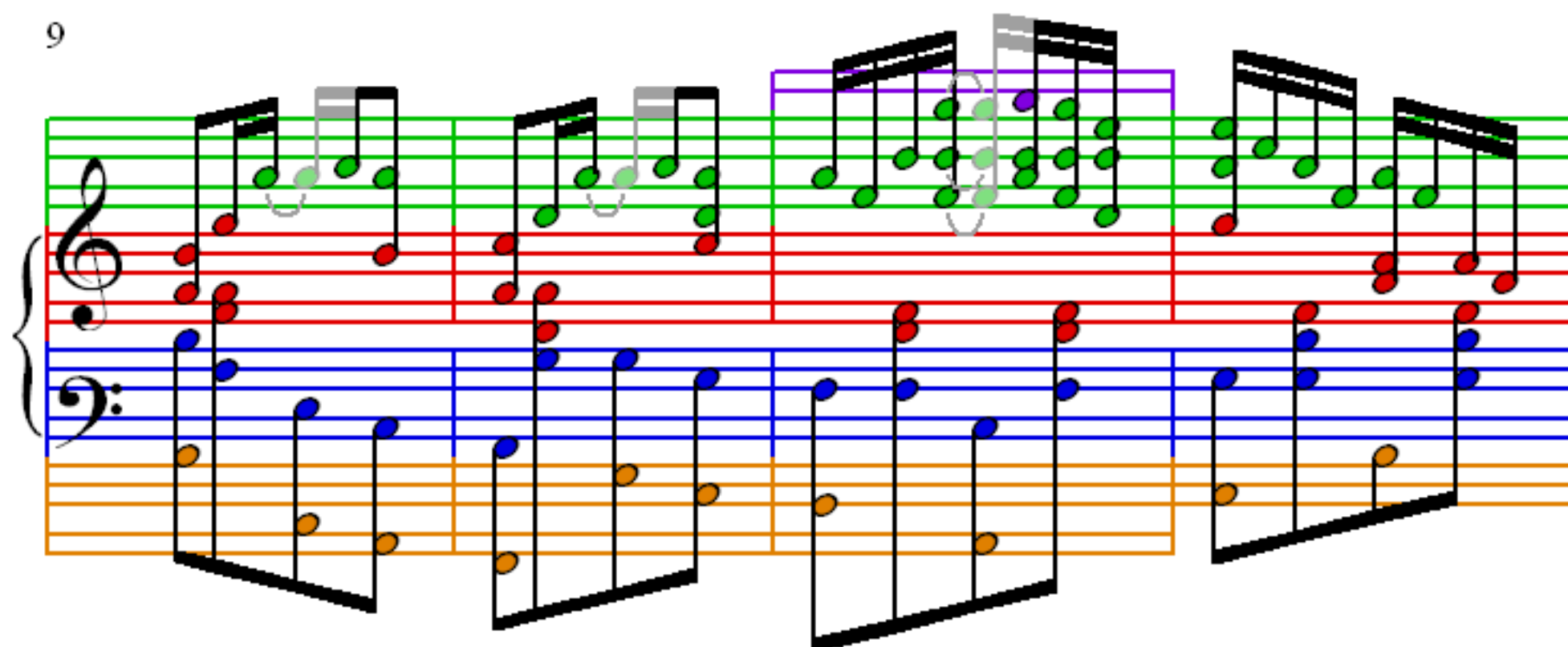
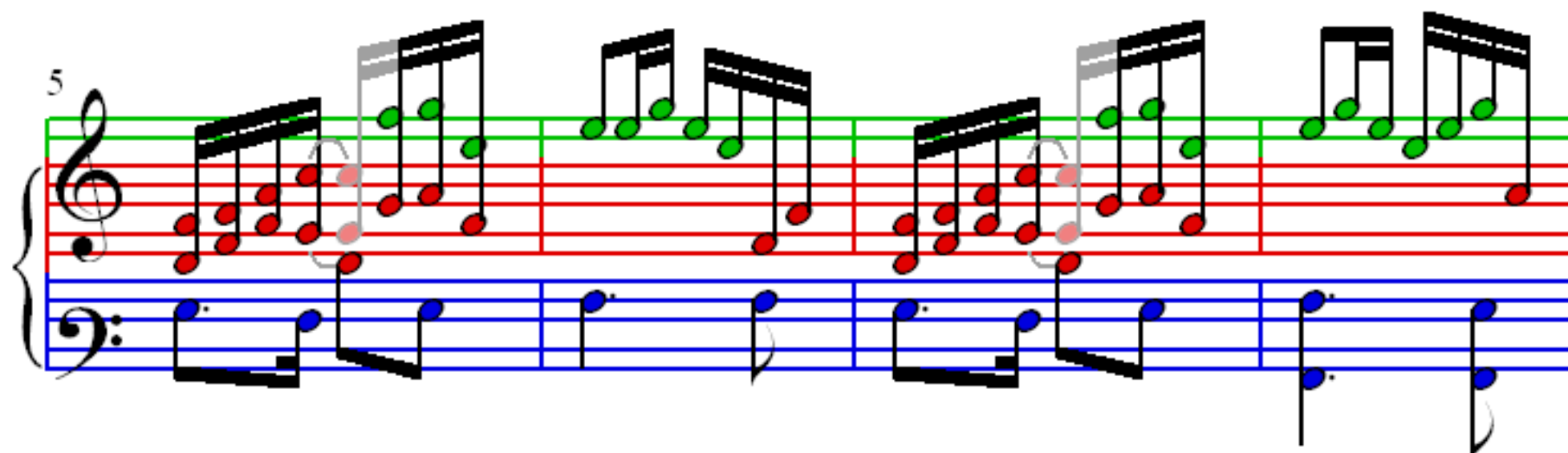
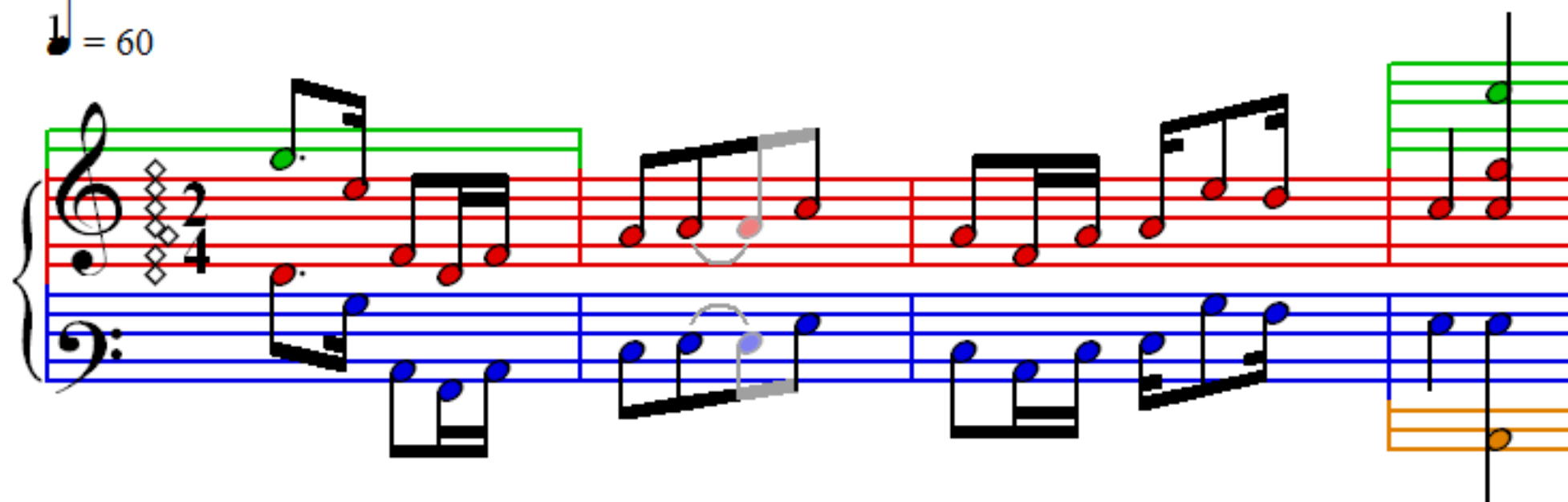
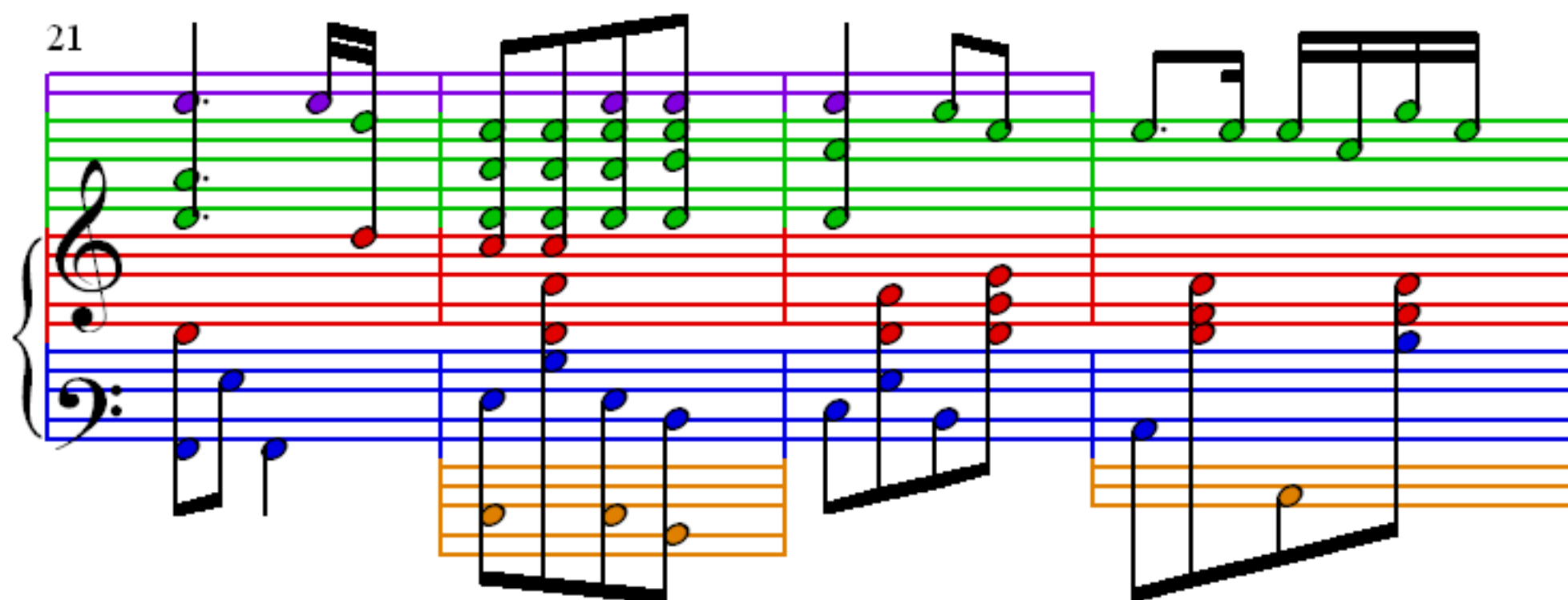
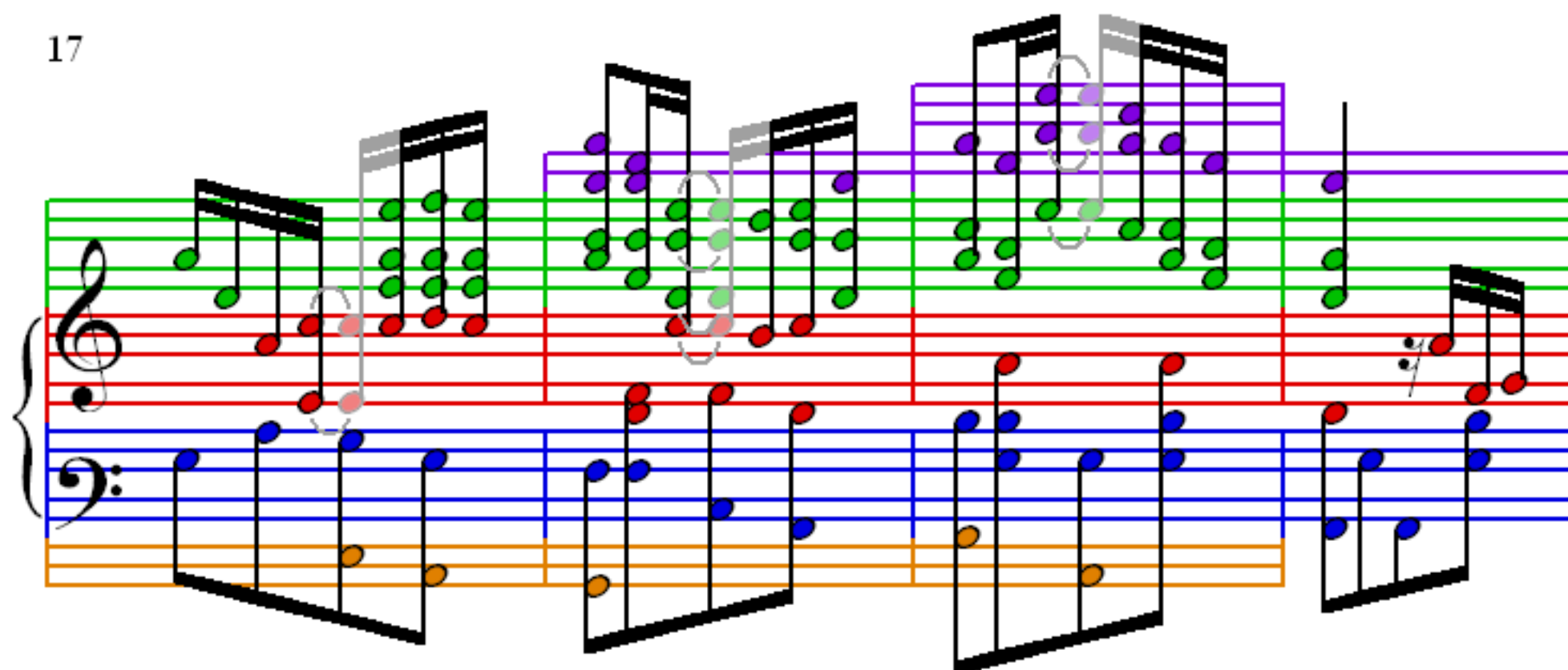


Wall Street Rag

S. Joplin (1868–1917)

$\text{♩} = 60$





25

Measures 25-28 of the piece. The right hand (treble clef) features a melody with eighth and sixteenth notes, accented in measures 25, 26, and 28. The left hand (bass clef) provides a bass line with eighth and sixteenth notes. The music is divided into four measures, each with a vertical bar line. The notes are color-coded: green for the right hand and blue for the left hand. The background has a purple top staff, green middle staff, red bottom staff, and orange bottom staff.

29

Measures 29-32 of the piece. The right hand (treble clef) continues the melody with eighth and sixteenth notes, accented in measures 29, 30, and 32. The left hand (bass clef) provides a bass line with eighth and sixteenth notes. The music is divided into four measures, each with a vertical bar line. The notes are color-coded: green for the right hand and blue for the left hand. The background has a purple top staff, green middle staff, red bottom staff, and orange bottom staff.

33

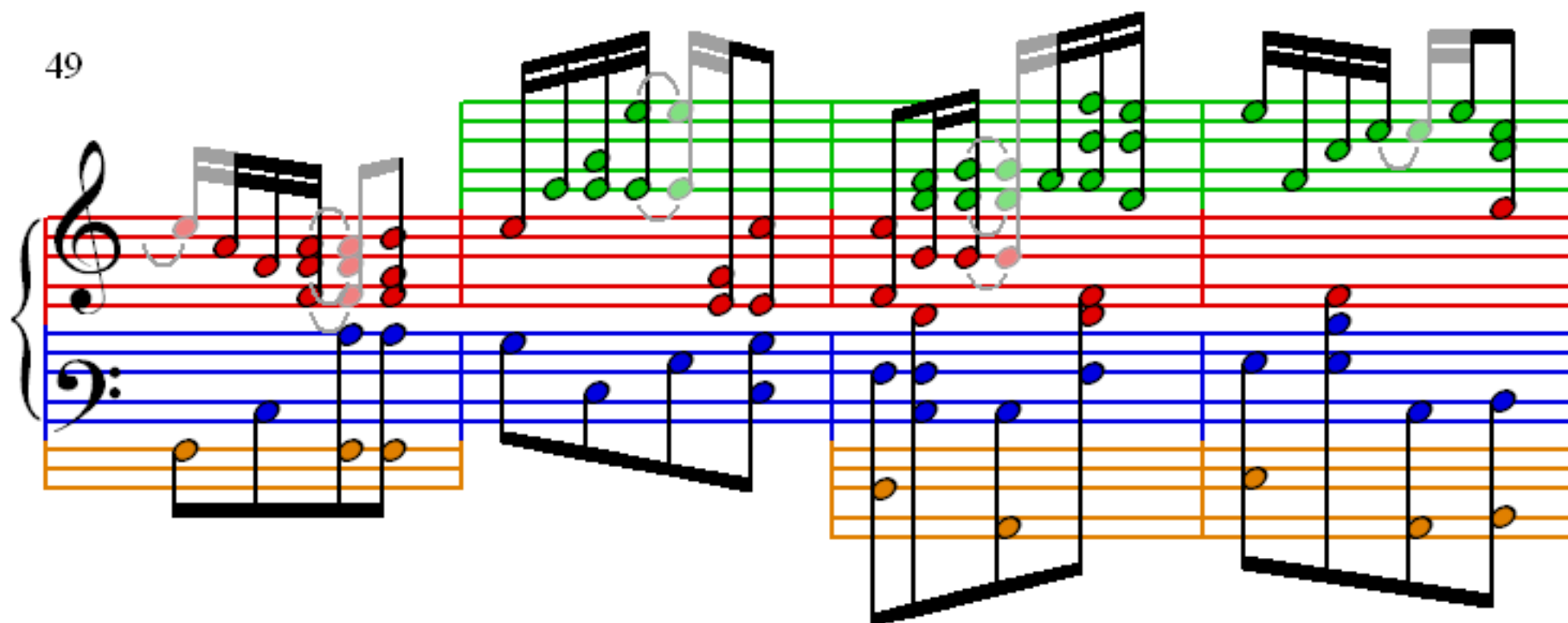
Measures 33-36 of the piece. The right hand (treble clef) continues the melody with eighth and sixteenth notes, accented in measures 33, 34, and 36. The left hand (bass clef) provides a bass line with eighth and sixteenth notes. The music is divided into four measures, each with a vertical bar line. The notes are color-coded: green for the right hand and blue for the left hand. The background has a purple top staff, green middle staff, red bottom staff, and orange bottom staff.

37

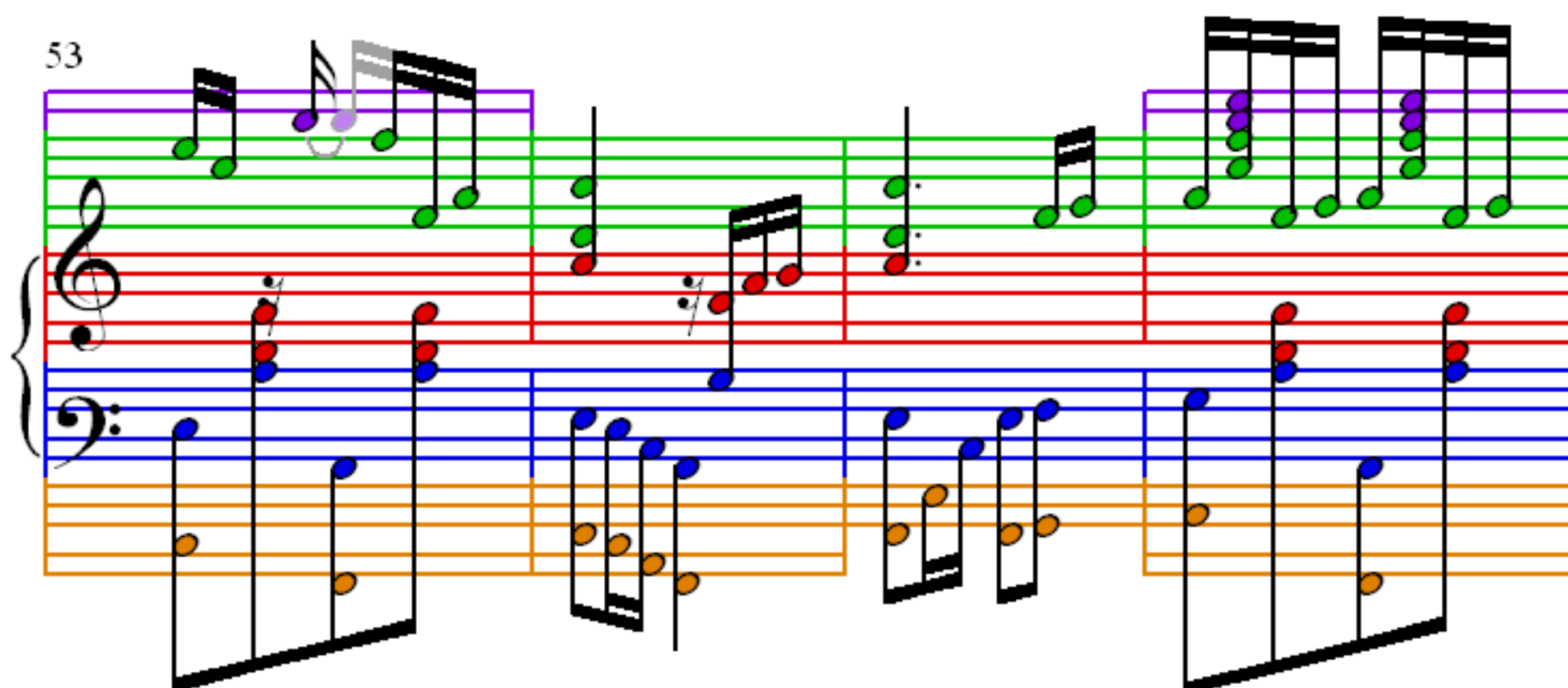
41

45

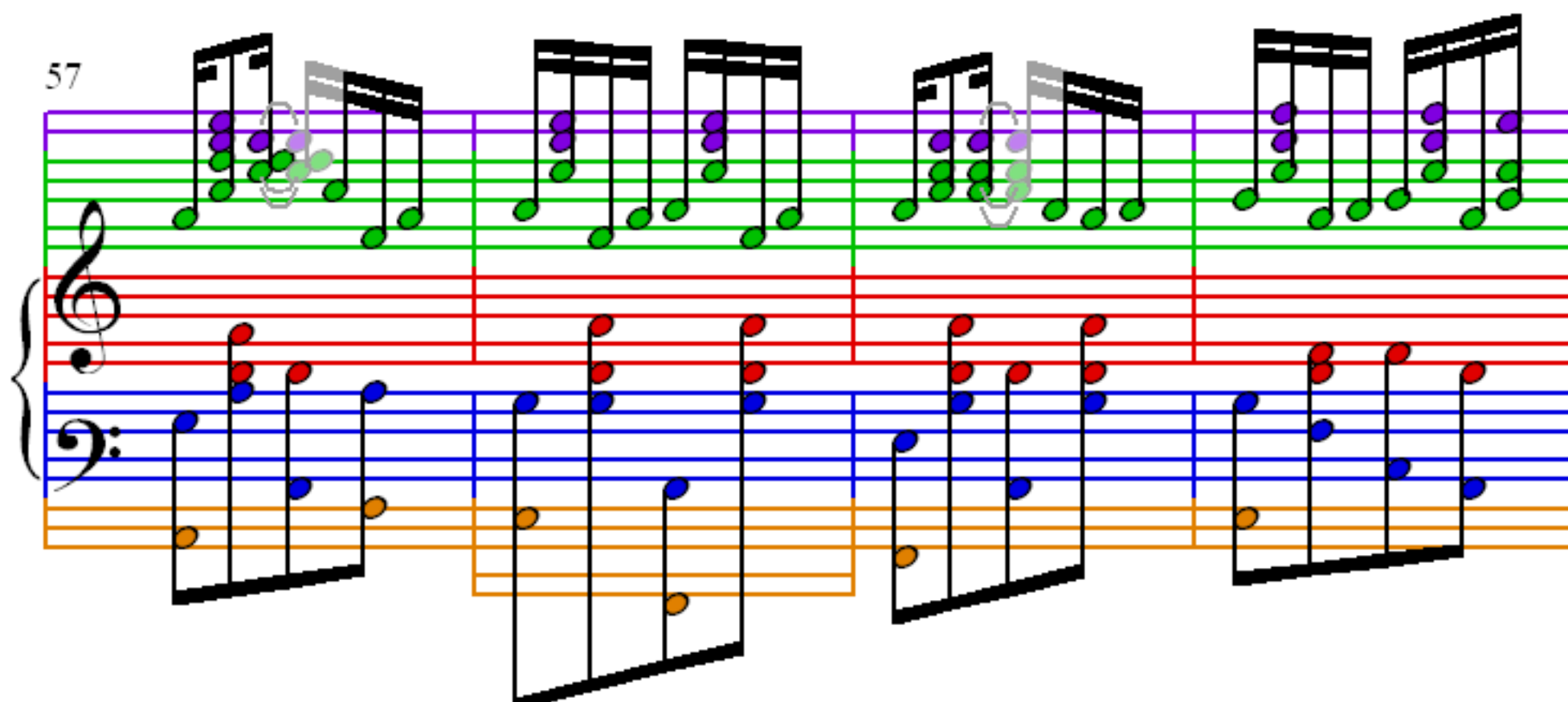
49



53



57



61

61

65

65

69

69