

Elite Syncopations

S. Joplin (1868–1917)

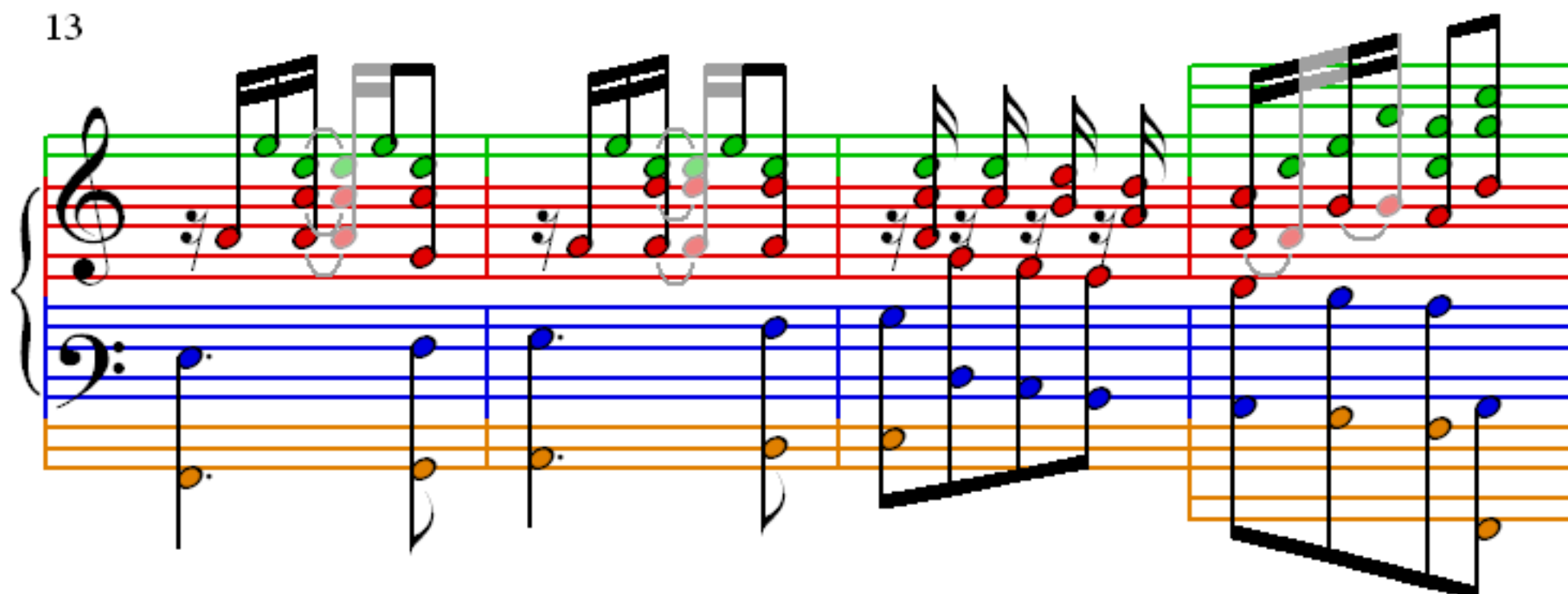
1 = 60

5

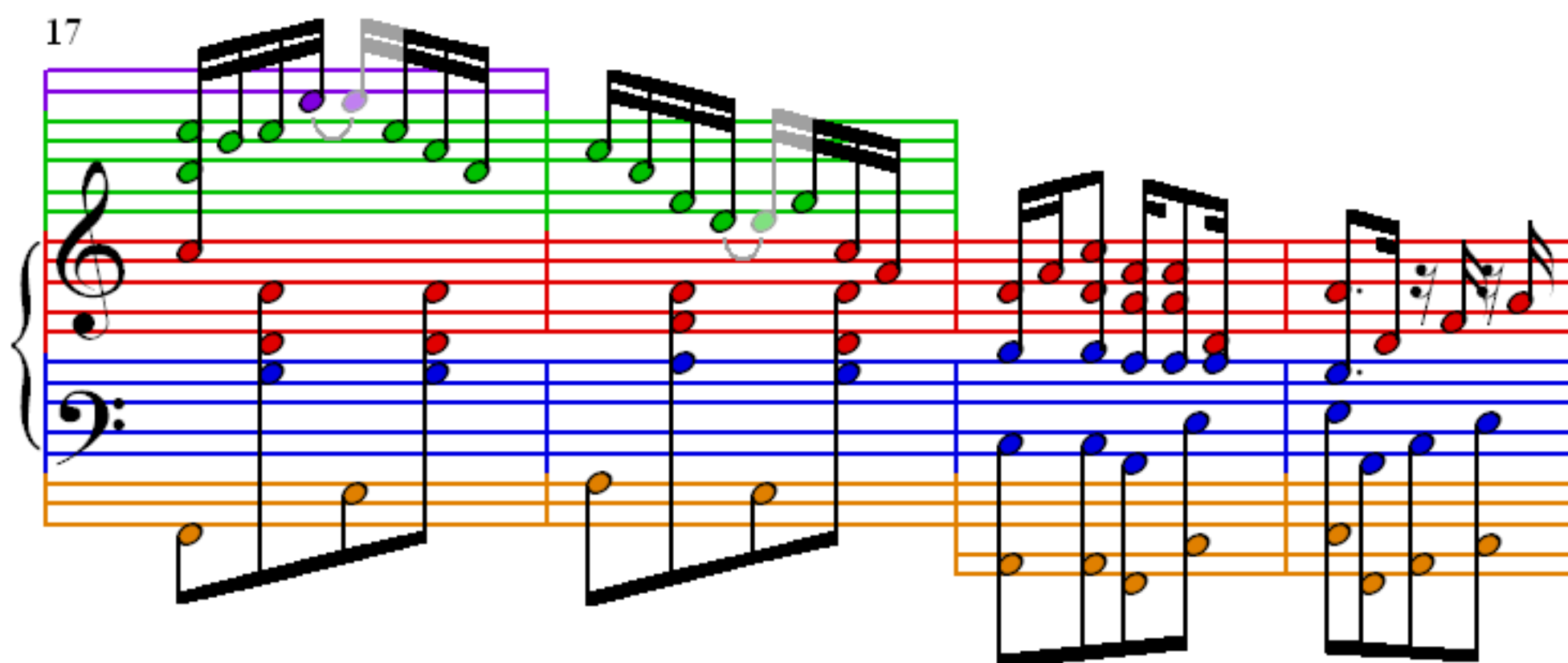
9

This image displays the first nine measures of the piano introduction to 'Elite Syncopations' by Scott Joplin. The score is written for piano in 2/4 time, with a tempo marking of quarter note = 60. The notation is color-coded: the right hand (treble clef) features green notes on the upper staff and red notes on the lower staff, while the left hand (bass clef) features blue notes on the upper staff and orange notes on the lower staff. Measures 1-4 are grouped by a purple bracket, measures 5-8 by a green bracket, and measure 9 by a purple bracket. The score illustrates complex syncopation, with many notes placed on off-beats. In measures 1-4, the right hand plays a series of eighth-note chords, while the left hand provides a steady eighth-note bass line. Measures 5-8 show a more intricate interplay between the hands, with the right hand often playing syncopated chords and the left hand continuing its rhythmic foundation. Measure 9 concludes the sequence with a final chord in the right hand and a sustained note in the left hand.

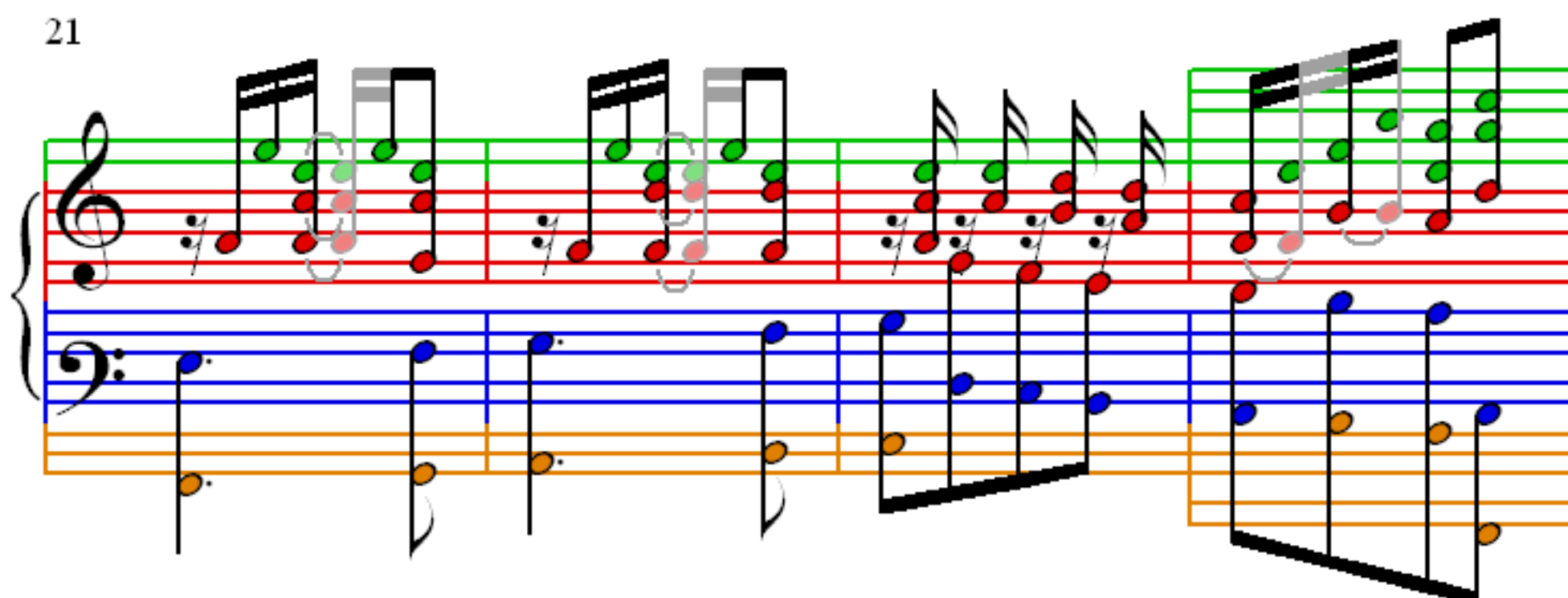
13



17



21



25

Measures 25-28 of a musical score. The score is written for piano on a grand staff with treble and bass clefs. The treble staff has a purple line at the top. The bass staff has a blue line at the bottom. The music features a complex rhythmic pattern with many beamed sixteenth and thirty-second notes. The notes are color-coded: green for the treble staff, red for the bass staff, and orange for the piano accompaniment. The piano accompaniment consists of a steady eighth-note bass line and a series of chords in the right hand.

29

Measures 29-32 of a musical score. The score is written for piano on a grand staff with treble and bass clefs. The treble staff has a purple line at the top. The bass staff has a blue line at the bottom. The music features a complex rhythmic pattern with many beamed sixteenth and thirty-second notes. The notes are color-coded: green for the treble staff, red for the bass staff, and orange for the piano accompaniment. The piano accompaniment consists of a steady eighth-note bass line and a series of chords in the right hand.

33

Measures 33-36 of a musical score. The score is written for piano on a grand staff with treble and bass clefs. The treble staff has a purple line at the top. The bass staff has a blue line at the bottom. The music features a complex rhythmic pattern with many beamed sixteenth and thirty-second notes. The notes are color-coded: green for the treble staff, red for the bass staff, and orange for the piano accompaniment. The piano accompaniment consists of a steady eighth-note bass line and a series of chords in the right hand.

37

41

45

49

53

Measures 53-56. Treble clef has green and red notes. Bass clef has blue notes. Measure 53 has a green note on the treble staff. Measure 54 has a red note on the treble staff. Measure 55 has a red note on the treble staff. Measure 56 has a green note on the treble staff.

57

Measures 57-60. Treble clef has green and red notes. Bass clef has blue notes. Measure 57 has a green note on the treble staff. Measure 58 has a red note on the treble staff. Measure 59 has a red note on the treble staff. Measure 60 has a green note on the treble staff.

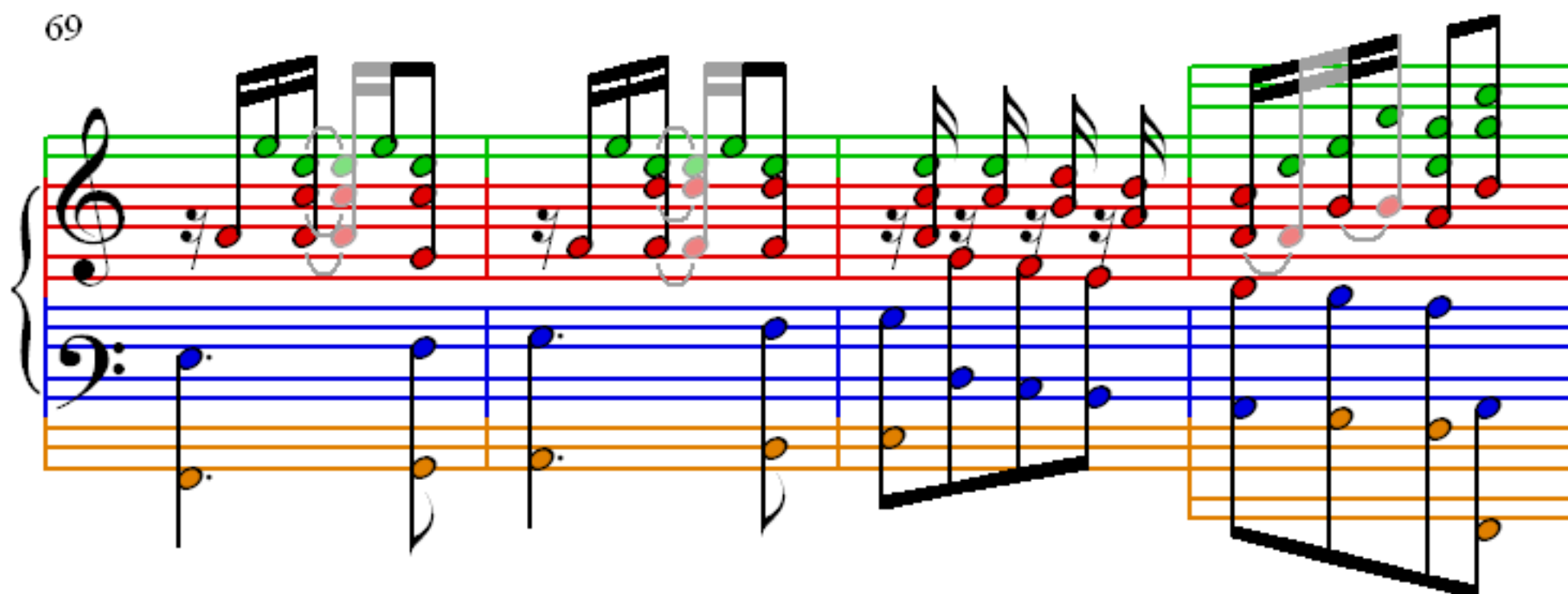
61

Measures 61-64. Treble clef has green and red notes. Bass clef has blue notes. Measure 61 has a green note on the treble staff. Measure 62 has a red note on the treble staff. Measure 63 has a red note on the treble staff. Measure 64 has a green note on the treble staff.

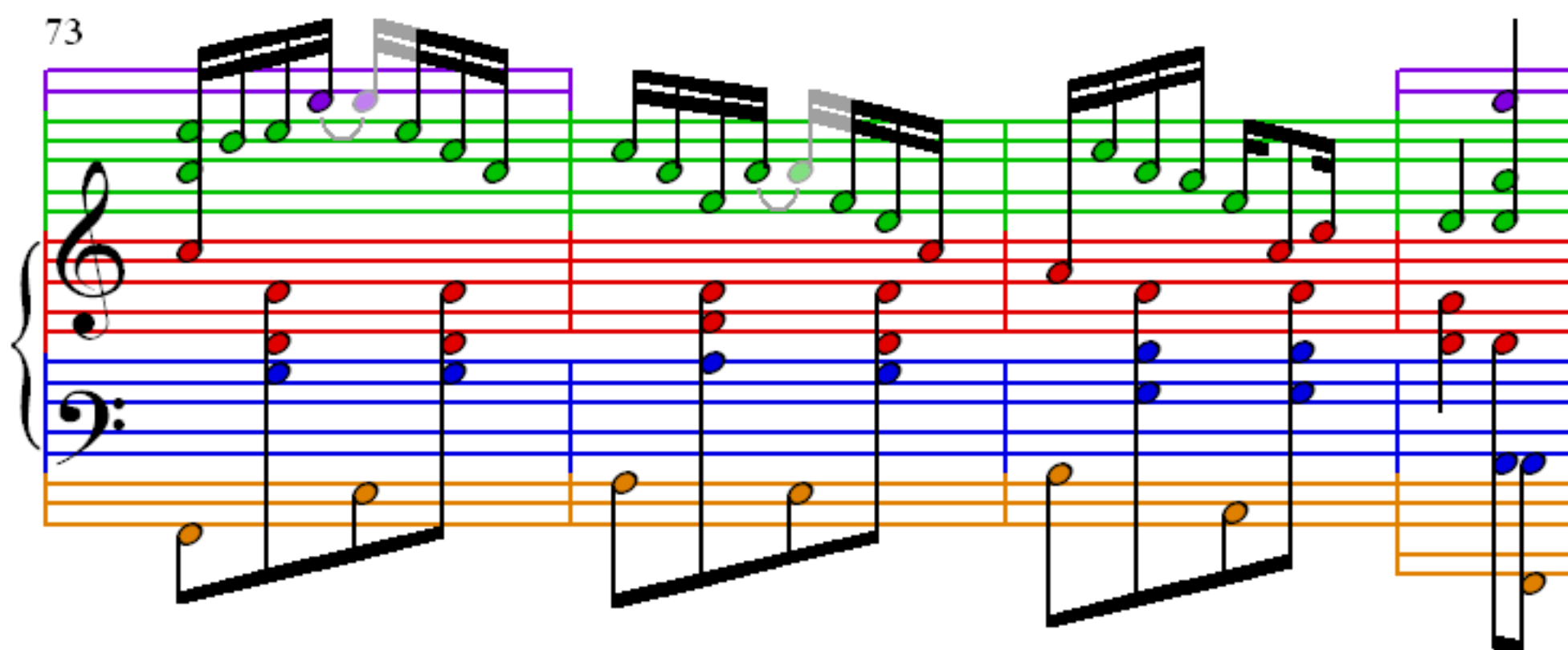
65

Measures 65-68. Treble clef has green and red notes. Bass clef has blue notes. Measure 65 has a green note on the treble staff. Measure 66 has a red note on the treble staff. Measure 67 has a red note on the treble staff. Measure 68 has a green note on the treble staff.

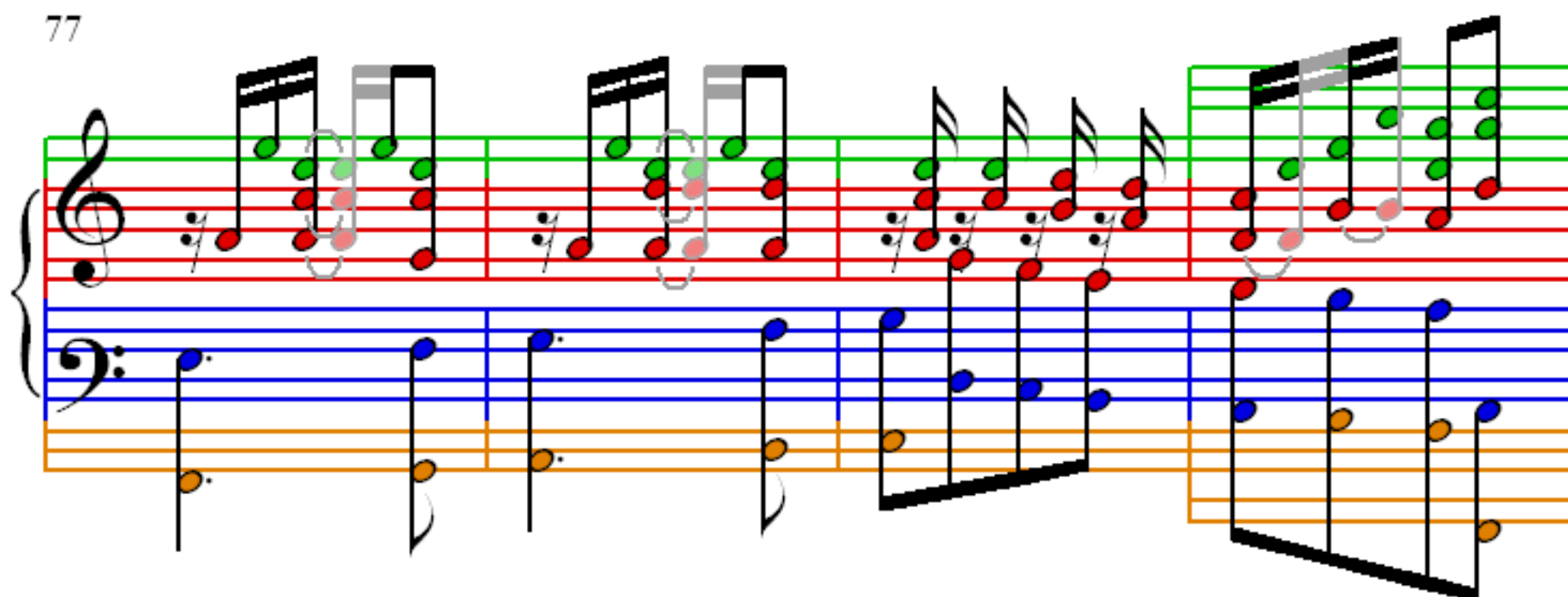
69



73



77



81

Measures 81-84 of a musical score. The score is written for piano, featuring a treble and bass staff. The treble staff has a purple key signature and a green staff line. The bass staff has a blue staff line. The music is in 4/4 time. Measures 81 and 82 show a treble staff with a sequence of eighth notes (G4, A4, B4, C5, B4, A4, G4) and a bass staff with a sequence of eighth notes (F3, E3, D3, C3, B2, A2, G2). Measures 83 and 84 show a treble staff with a sequence of eighth notes (G4, A4, B4, C5, B4, A4, G4) and a bass staff with a sequence of eighth notes (F3, E3, D3, C3, B2, A2, G2). The notes are color-coded: green for treble and blue for bass. The treble staff has a purple key signature and a green staff line. The bass staff has a blue staff line.

85

Measures 85-88 of a musical score. The score is written for piano, featuring a treble and bass staff. The treble staff has a purple key signature and a green staff line. The bass staff has a blue staff line. The music is in 4/4 time. Measures 85 and 86 show a treble staff with a sequence of eighth notes (G4, A4, B4, C5, B4, A4, G4) and a bass staff with a sequence of eighth notes (F3, E3, D3, C3, B2, A2, G2). Measures 87 and 88 show a treble staff with a sequence of eighth notes (G4, A4, B4, C5, B4, A4, G4) and a bass staff with a sequence of eighth notes (F3, E3, D3, C3, B2, A2, G2). The notes are color-coded: green for treble and blue for bass. The treble staff has a purple key signature and a green staff line. The bass staff has a blue staff line.

89

Measures 89-92 of a musical score. The score is written for piano, featuring a treble and bass staff. The treble staff has a purple key signature and a green staff line. The bass staff has a blue staff line. The music is in 4/4 time. Measures 89 and 90 show a treble staff with a sequence of eighth notes (G4, A4, B4, C5, B4, A4, G4) and a bass staff with a sequence of eighth notes (F3, E3, D3, C3, B2, A2, G2). Measures 91 and 92 show a treble staff with a sequence of eighth notes (G4, A4, B4, C5, B4, A4, G4) and a bass staff with a sequence of eighth notes (F3, E3, D3, C3, B2, A2, G2). The notes are color-coded: green for treble and blue for bass. The treble staff has a purple key signature and a green staff line. The bass staff has a blue staff line.

93

Measures 93-96 of a musical score. The score is written for piano (piano) and features a complex rhythmic pattern. The melody is in the right hand, and the bass line is in the left hand. The notes are color-coded: green for the melody, blue for the bass line, and orange for the piano accompaniment. A grey oval highlights a specific melodic phrase in measure 96.

97

Measures 97-100 of a musical score. The score is written for piano (piano) and features a complex rhythmic pattern. The melody is in the right hand, and the bass line is in the left hand. The notes are color-coded: green for the melody, blue for the bass line, and orange for the piano accompaniment. A grey oval highlights a specific melodic phrase in measure 100.

101

Measures 101-104 of a musical score. The score is written for piano (piano) and features a complex rhythmic pattern. The melody is in the right hand, and the bass line is in the left hand. The notes are color-coded: green for the melody, blue for the bass line, and orange for the piano accompaniment. A grey oval highlights a specific melodic phrase in measure 104.

105

109

113

125

129

133

141

145

