

The St. Louis Rag

T. Turpin (1873–1922)

1
♩ = 96

Measures 1-4 of the piece. The music is in 2/4 time, indicated by the key signature of two flats and the time signature. The tempo is marked as quarter note = 96. The notation is presented on a grand staff with a treble and bass clef. The notes are color-coded: green for the right hand and blue for the left hand. The right hand features a complex, syncopated melody with many beamed eighth and sixteenth notes. The left hand provides a steady, rhythmic accompaniment with eighth notes.

5

Measures 5-8 of the piece. The notation continues on the grand staff. In measures 5 and 7, the right hand has a triplet of eighth notes, which are highlighted with a grey oval. The left hand continues its rhythmic accompaniment. The color-coding of notes (green for right hand, blue for left hand) is maintained.

9

Measures 9-12 of the piece. The notation continues on the grand staff. In measures 10 and 12, the right hand has a triplet of eighth notes, highlighted with a grey oval. The left hand continues its rhythmic accompaniment. The color-coding of notes (green for right hand, blue for left hand) is maintained.

13

17

21

25

Measures 25-28 of the musical score. The treble clef staff features a series of eighth-note chords, primarily in green, with some red notes in measures 26 and 28. The bass clef staff has a whole rest in measure 25, followed by eighth-note chords in blue and orange in measures 26-28. A small 'y' symbol is present in the red line of the treble staff in measures 26 and 28.

29

Measures 29-32 of the musical score. The treble clef staff continues with eighth-note chords, mostly green, with some red notes. Measures 30 and 31 have a grey oval highlighting a specific chord. Measure 32 features a purple eighth-note chord. The bass clef staff has eighth-note chords in blue and orange. A small 'y' symbol is present in the red line of the treble staff in measure 29.

33

Measures 33-36 of the musical score. The treble clef staff has eighth-note chords, mostly green, with some red notes. Measure 34 has a purple eighth-note chord. The bass clef staff has eighth-note chords in blue and orange. A small 'y' symbol is present in the red line of the treble staff in measures 33, 34, and 35.

37

This system contains measures 37 through 40. The treble clef staff features a complex melody with many beamed sixteenth notes, primarily in green and red. The bass clef staff provides a harmonic accompaniment with blue notes. An orange staff at the bottom shows a separate line of music. Measures 38 and 39 include slurs and ties over the treble staff. Measure 40 contains a double bar line.

41

This system contains measures 41 through 44. The treble clef staff continues the melodic line with beamed sixteenth notes in green and red. The bass clef staff has blue notes. The orange staff at the bottom continues its line. Measures 42 and 43 show slurs and ties in the treble staff. Measure 44 ends with a double bar line.

45

This system contains measures 45 through 48. The treble clef staff features the same complex melodic pattern of beamed sixteenth notes in green and red. The bass clef staff has blue notes. The orange staff at the bottom continues its line. Measures 46 and 47 include slurs and ties in the treble staff. Measure 48 ends with a double bar line.

49

Measures 49-52 of the musical score. The treble clef staff features a complex melody with many beamed sixteenth and thirty-second notes, some highlighted in green. The bass clef staff provides a steady accompaniment with eighth and sixteenth notes, some highlighted in blue. The system is divided into four measures by vertical bar lines.

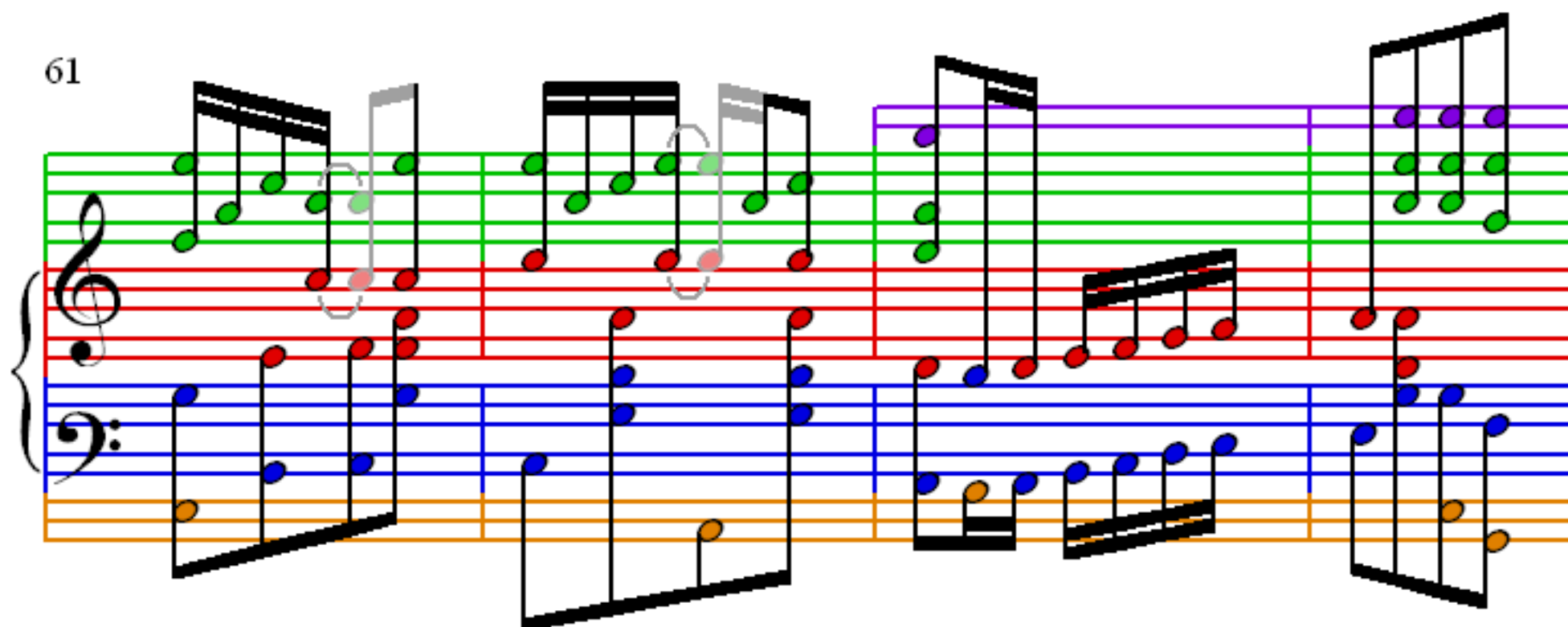
53

Measures 53-56 of the musical score. The treble clef staff continues the intricate melody, with some notes highlighted in green and others in red. The bass clef staff maintains the rhythmic accompaniment, with some notes highlighted in blue. The system is divided into four measures by vertical bar lines.

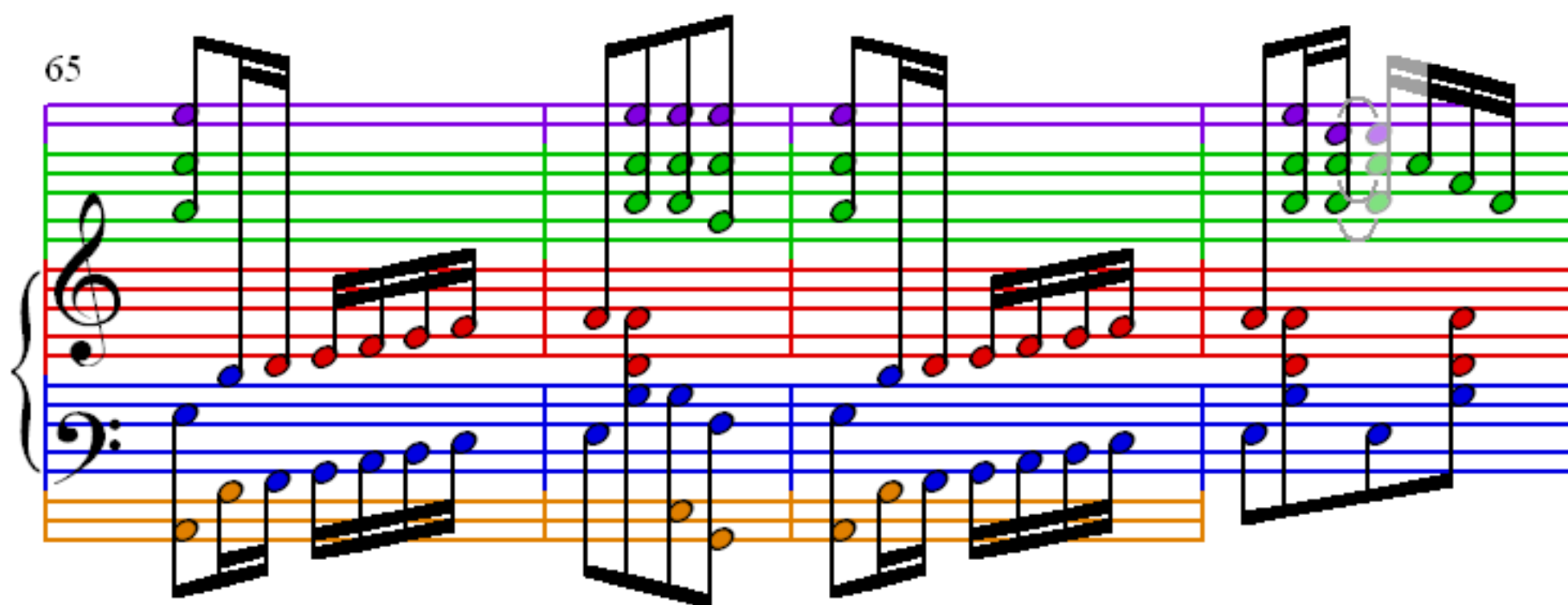
57

Measures 57-60 of the musical score. The treble clef staff shows a continuation of the fast-paced melody, with some notes highlighted in green and others in red. The bass clef staff provides a consistent accompaniment, with some notes highlighted in blue. The system is divided into four measures by vertical bar lines.

61



65



69

