

# May Day Maching Song

FR. Bell

$\text{♩} = 120$

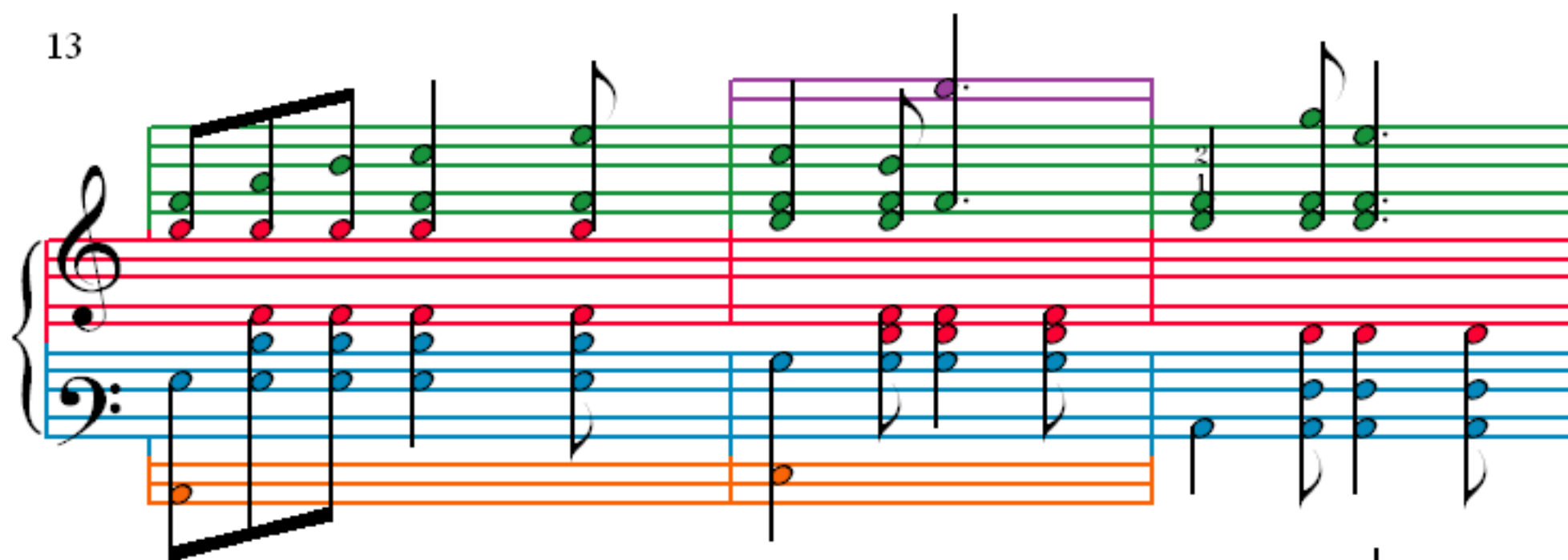
Measures 1-3 of the May Day Maching Song. The notation is in 6/8 time. The treble clef staff has a key signature of one flat (Bb). The bass clef staff has a key signature of one flat (Bb). The music features a melody in the treble and a bass line in the bass. Fingerings are indicated by numbers 1-5. A repeat sign is present at the end of measure 3.

Measures 4-6 of the May Day Maching Song. The notation continues from the previous system. The treble clef staff has a key signature of one flat (Bb). The bass clef staff has a key signature of one flat (Bb). The music features a melody in the treble and a bass line in the bass. Fingerings are indicated by numbers 1-5. A repeat sign is present at the end of measure 6.

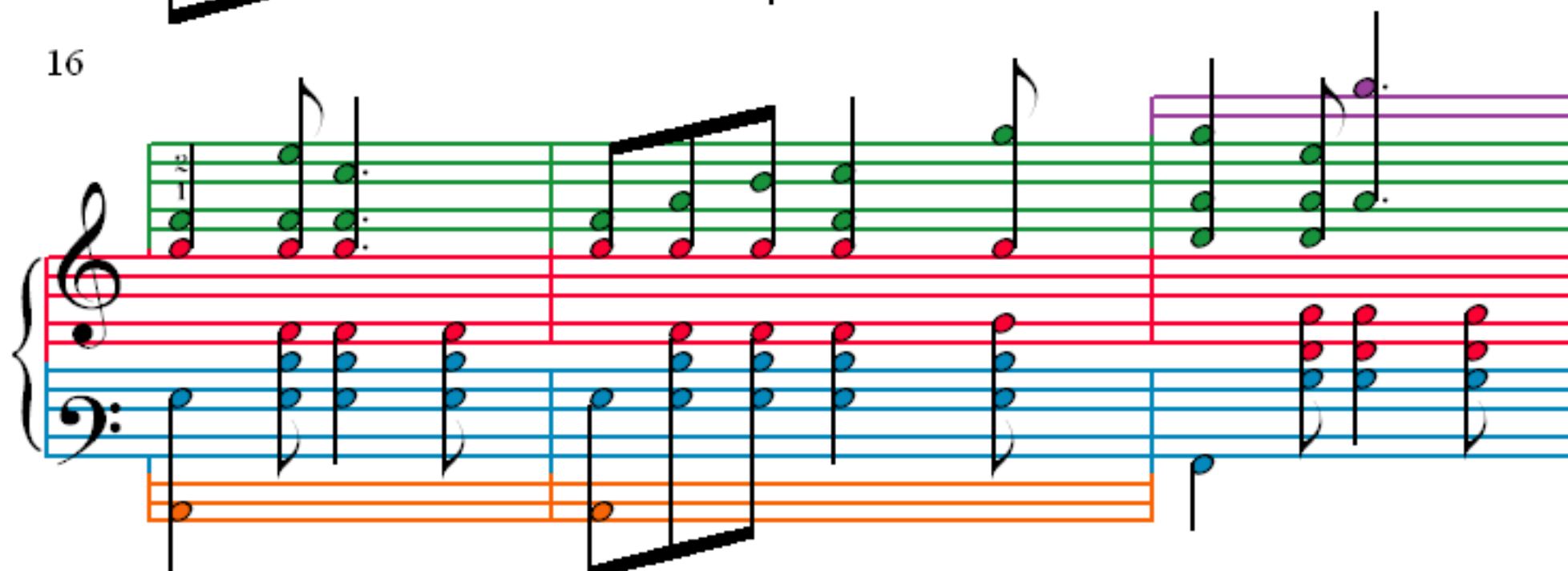
Measures 7-9 of the May Day Maching Song. The notation continues from the previous system. The treble clef staff has a key signature of one flat (Bb). The bass clef staff has a key signature of one flat (Bb). The music features a melody in the treble and a bass line in the bass. Fingerings are indicated by numbers 1-5. A repeat sign is present at the end of measure 9.

Measures 10-12 of the May Day Maching Song. The notation continues from the previous system. The treble clef staff has a key signature of one flat (Bb). The bass clef staff has a key signature of one flat (Bb). The music features a melody in the treble and a bass line in the bass. Fingerings are indicated by numbers 1-5. A repeat sign is present at the end of measure 12.

13



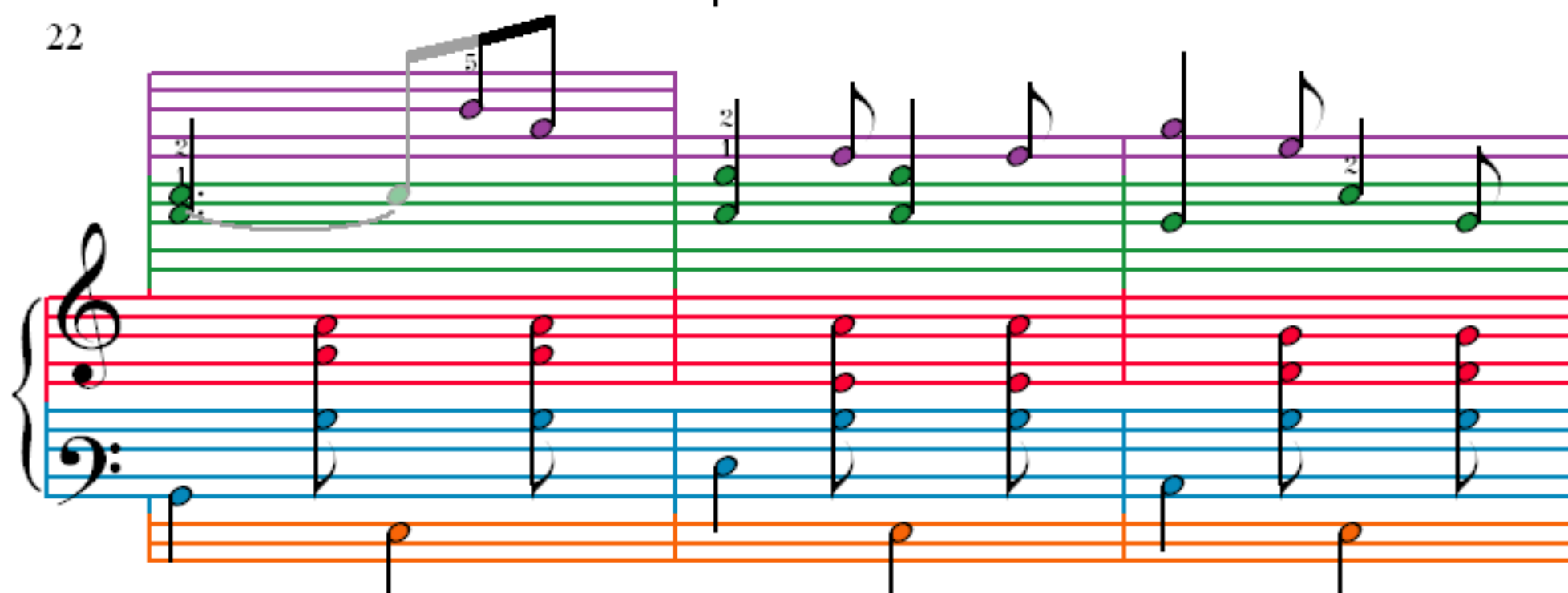
16



19



22



25

28

31

34

37

Measures 37-39. Treble clef has green notes, bass clef has blue notes, and a lower orange staff has orange notes. Measure 37 has a black wedge. Measure 38 has a purple box. Measure 39 has a black wedge.

40

Measures 40-42. Treble clef has green notes, bass clef has blue notes, and a lower orange staff has orange notes. Measure 40 has a black wedge. Measure 41 has a black wedge. Measure 42 has a purple box.

43

Measures 43-46. Treble clef has green notes, bass clef has blue notes, and a lower orange staff has orange notes. Measure 43 has a purple box. Measure 44 has a black wedge. Measure 45 has a black wedge. Measure 46 has a black wedge.

47

Measures 47-50. Treble clef has green notes, bass clef has blue notes, and a lower orange staff has orange notes. Measure 47 has a black wedge. Measure 48 has a black wedge. Measure 49 has a black wedge. Measure 50 has a black wedge.

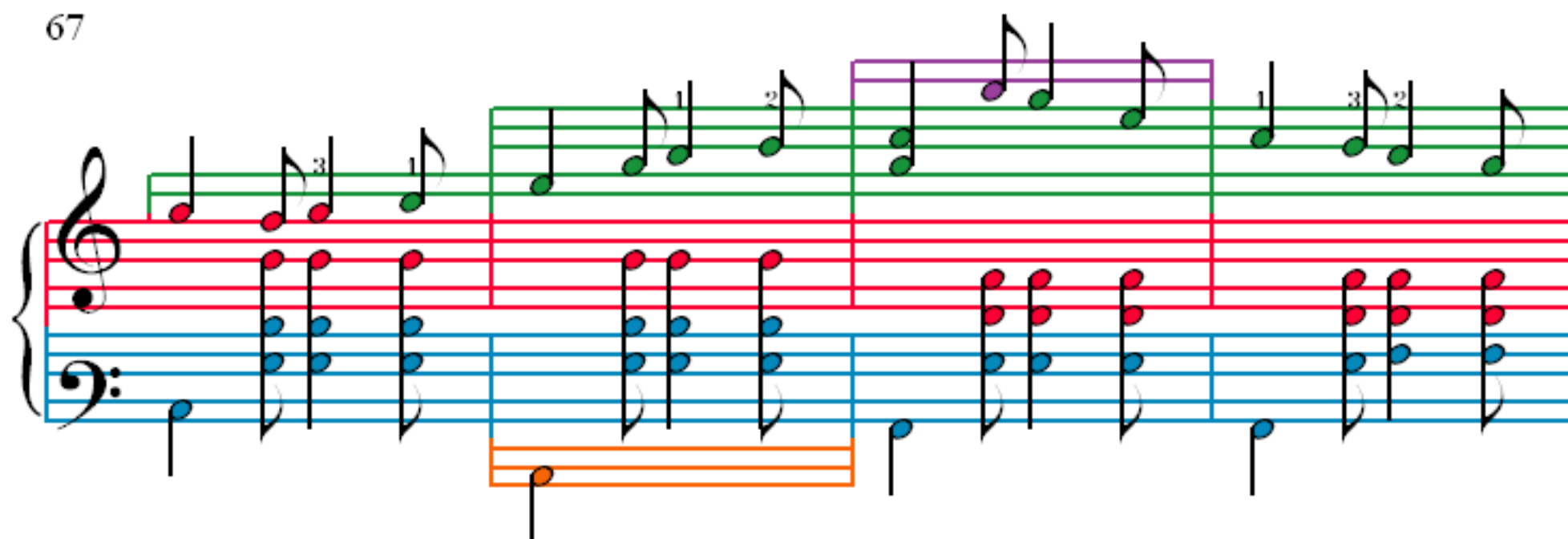
51

55

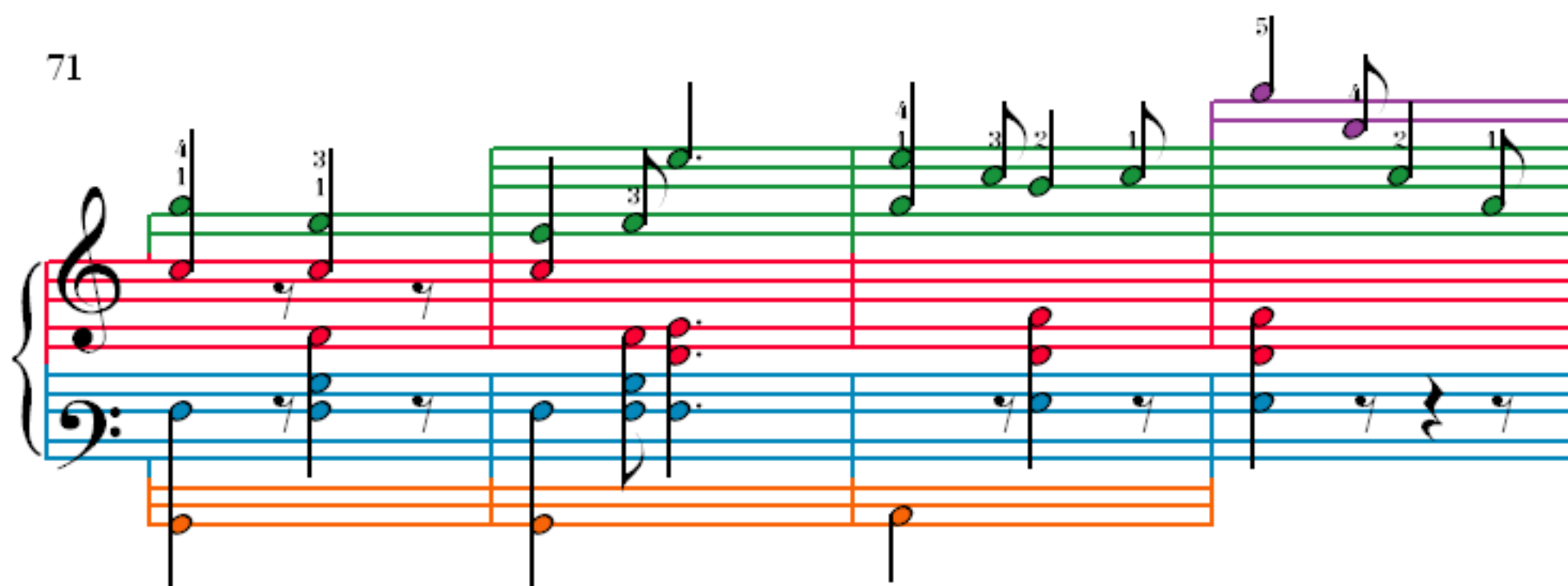
59

63

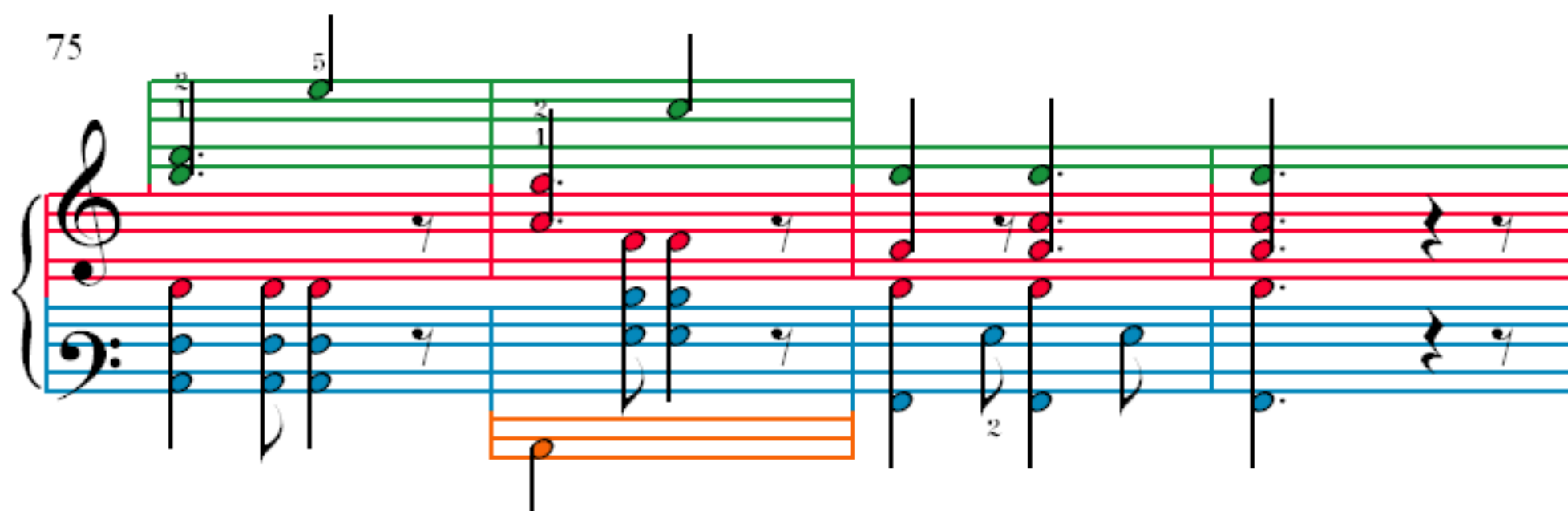
67



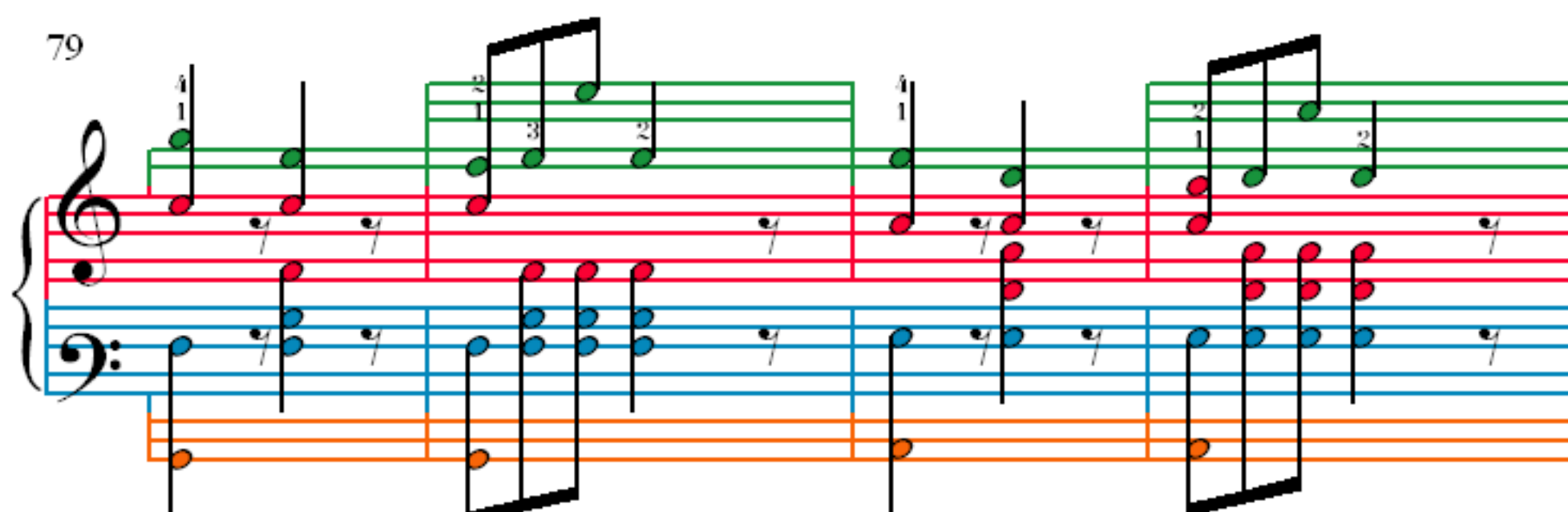
71



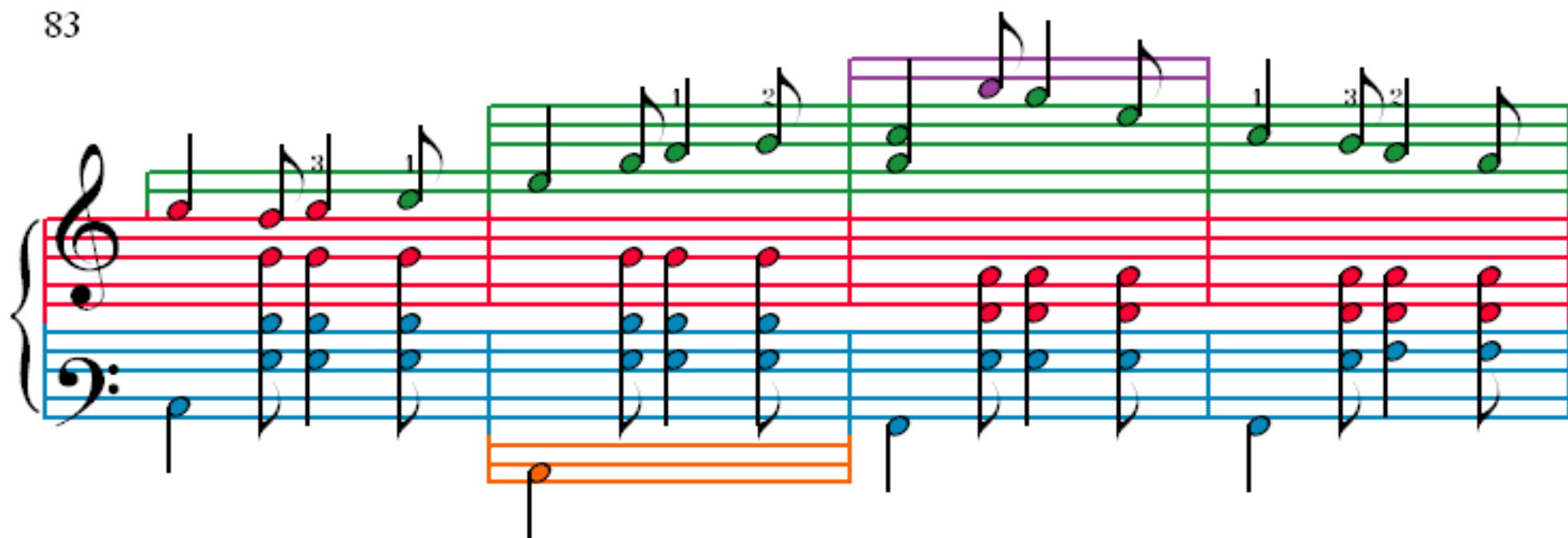
75



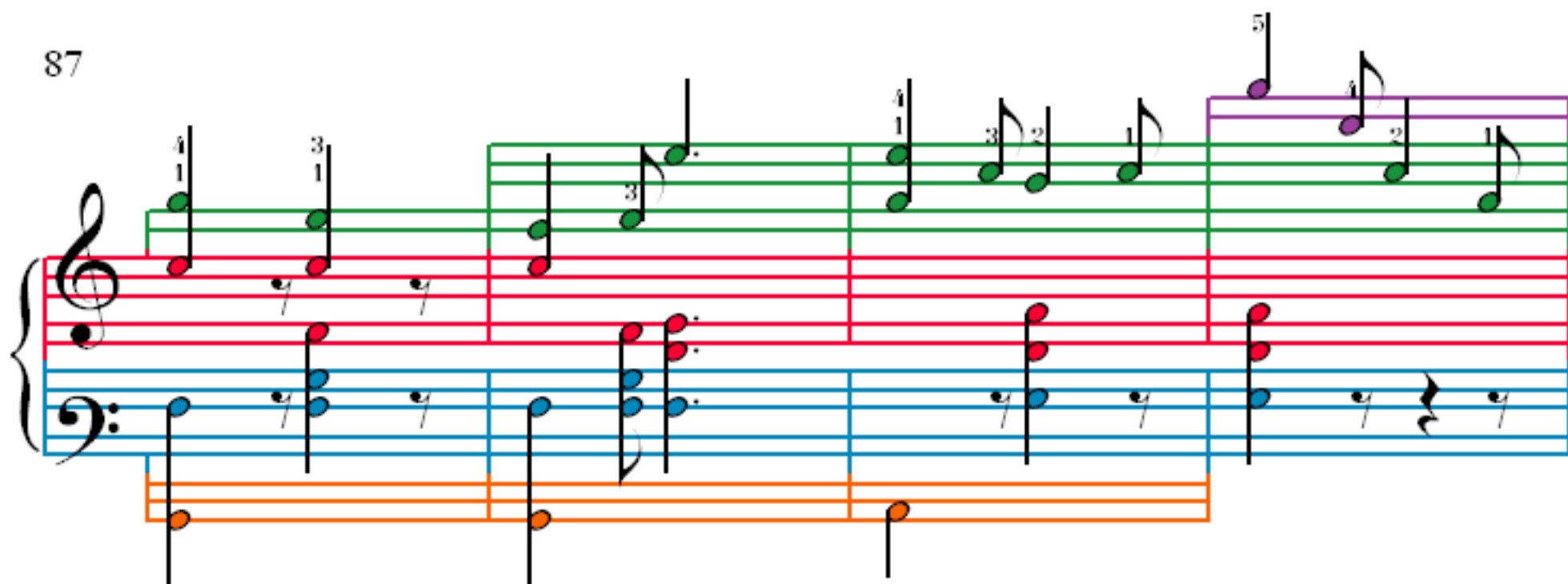
79



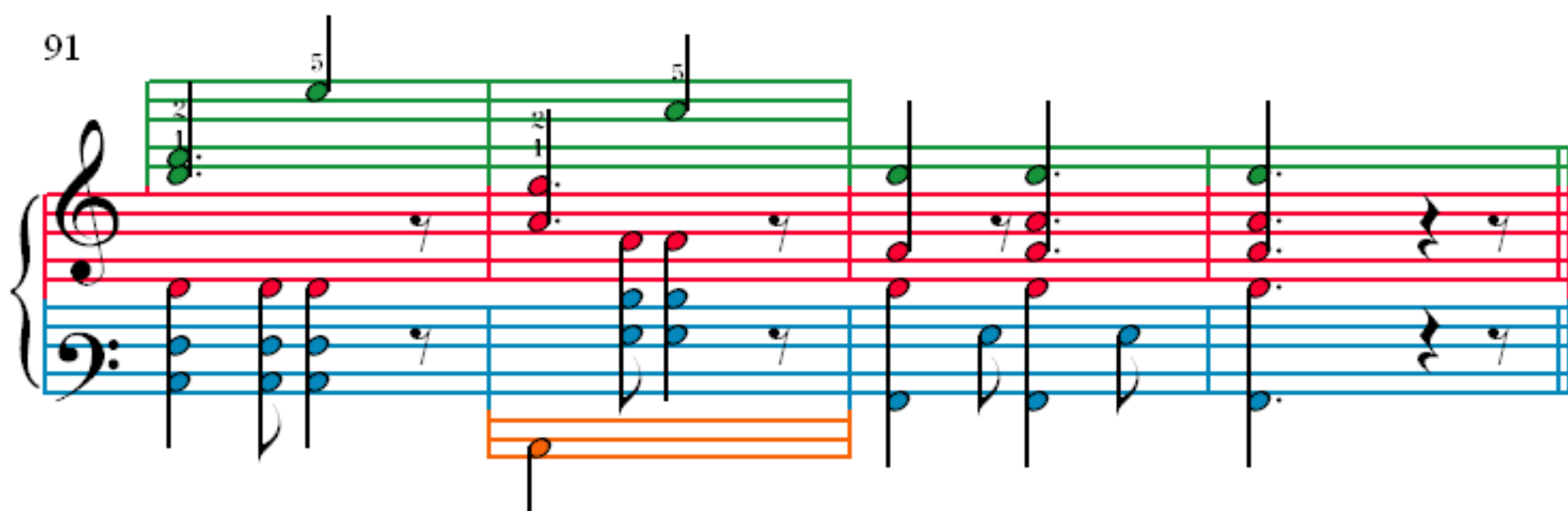
83



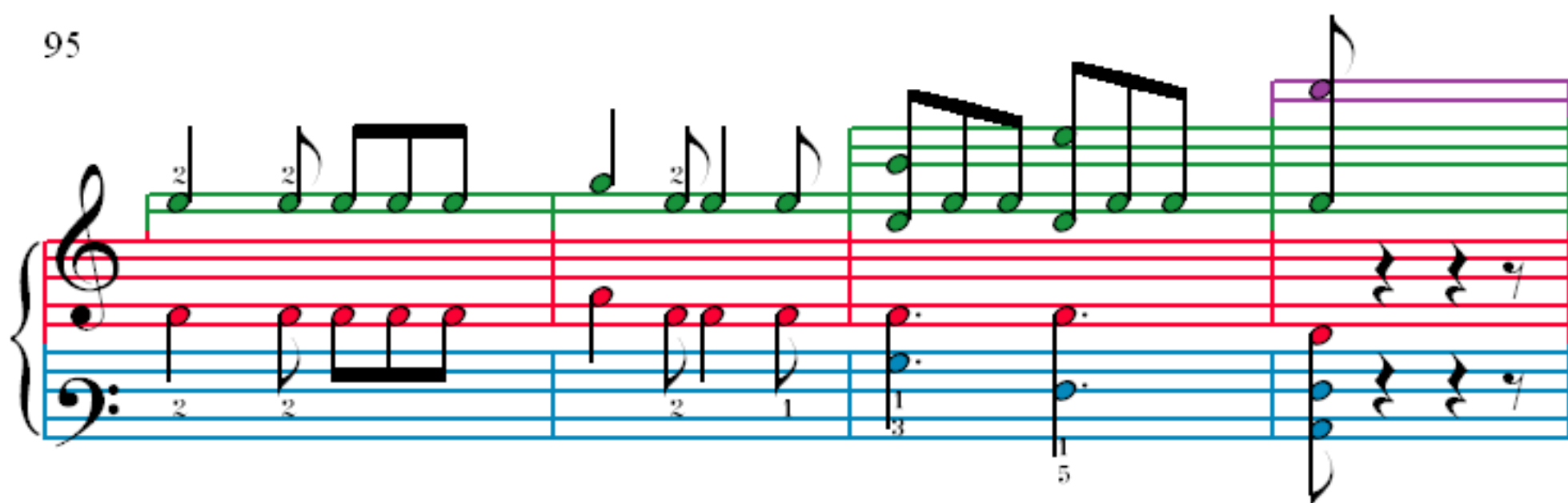
87



91



95



99

102

105

108

112

115

118

122

126

129

132

135