

A Little Study

The musical score for "A Little Study" is written in 6/8 time and consists of five systems of piano accompaniment. Each system is composed of a treble staff and a bass staff, with a brace connecting them. The notes are color-coded: red for the right hand (treble staff) and blue for the left hand (bass staff). Fingerings are indicated by numbers 1-5 above or below the notes. The score is divided into measures by vertical bar lines, with some measures containing a repeat sign (a double bar line with a diagonal slash). The first system begins with a treble staff containing a treble clef, a key signature of one sharp (F#), and a time signature of 6/8. The first measure of the first system contains a treble staff with a treble clef, a key signature of one sharp (F#), and a time signature of 6/8. The first measure of the first system contains a treble staff with a treble clef, a key signature of one sharp (F#), and a time signature of 6/8. The first measure of the first system contains a treble staff with a treble clef, a key signature of one sharp (F#), and a time signature of 6/8.

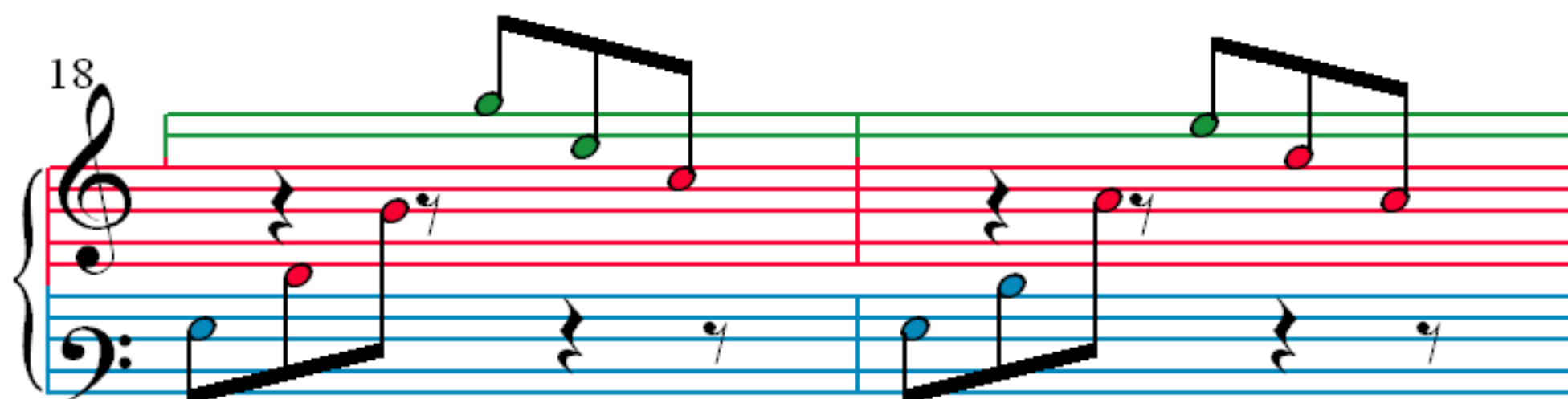
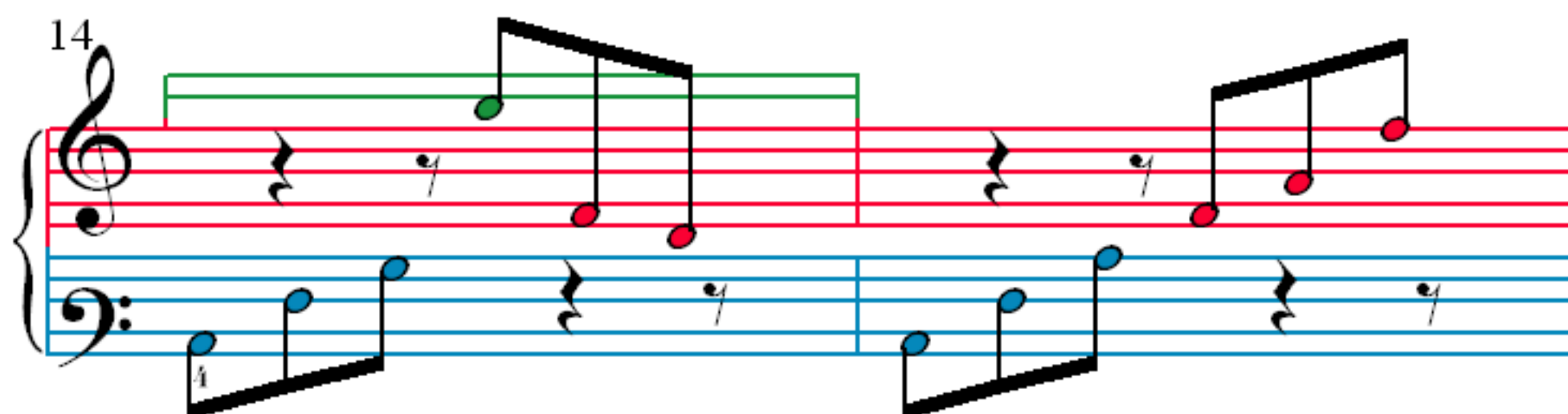
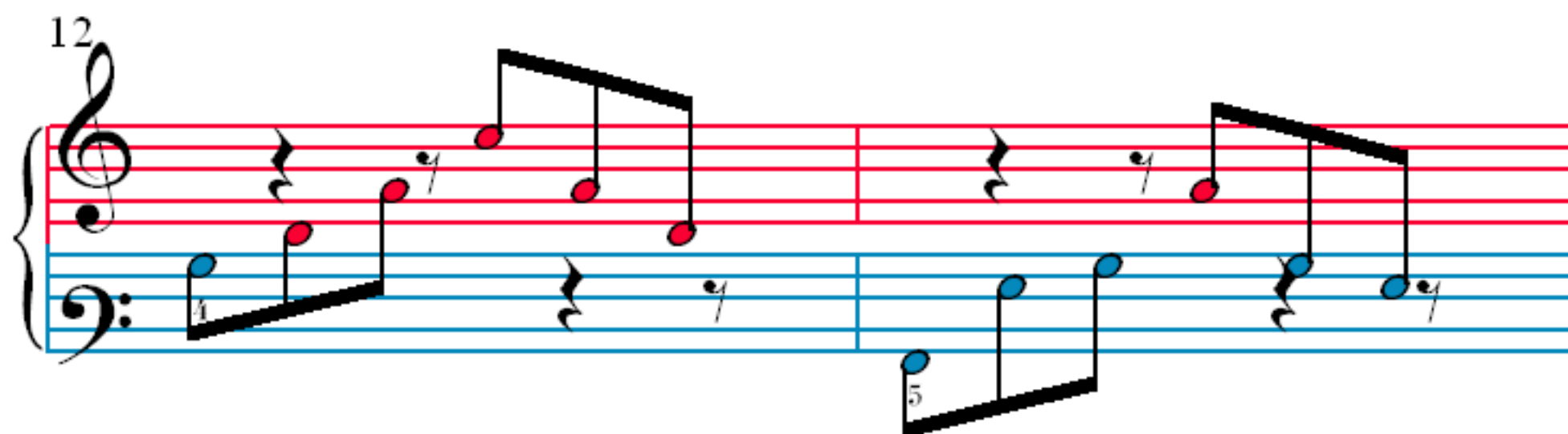
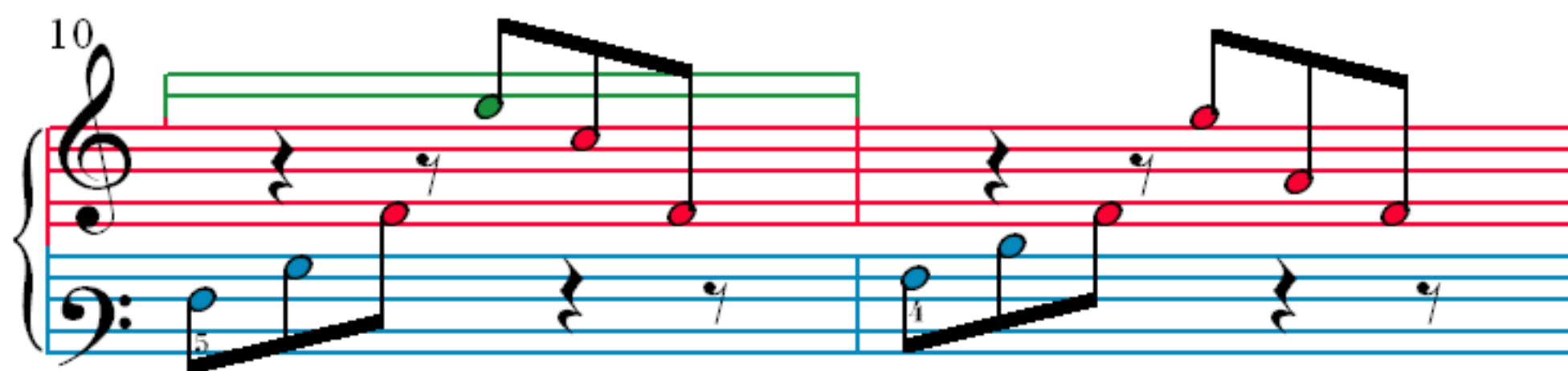
1

2

4

6

8



20

Measures 20-21. Treble clef: Measure 20 has a green line and red notes (G4, A4, B4). Measure 21 has a green line and red notes (G4, A4, B4). Bass clef: Measure 20 has blue notes (F3, G3, A3). Measure 21 has blue notes (F3, G3, A3). Slurs connect notes across measures.

22

Measures 22-23. Treble clef: Measure 22 has a green line and red notes (G4, A4, B4). Measure 23 has a green line and red notes (G4, A4, B4). Bass clef: Measure 22 has blue notes (F3, G3, A3). Measure 23 has blue notes (F3, G3, A3). Slurs connect notes across measures.

24

Measures 24-25. Treble clef: Measure 24 has a green line and red notes (G4, A4, B4). Measure 25 has a green line and red notes (G4, A4, B4). Bass clef: Measure 24 has blue notes (F3, G3, A3). Measure 25 has blue notes (F3, G3, A3). Slurs connect notes across measures.

26

Measures 26-27. Treble clef: Measure 26 has a green line and red notes (G4, A4, B4). Measure 27 has a green line and red notes (G4, A4, B4). Bass clef: Measure 26 has blue notes (F3, G3, A3). Measure 27 has blue notes (F3, G3, A3). Slurs connect notes across measures.

28

Measures 28-29. Treble clef: Measure 28 has a green line and red notes (G4, A4, B4). Measure 29 has a green line and red notes (G4, A4, B4). Bass clef: Measure 28 has blue notes (F3, G3, A3). Measure 29 has blue notes (F3, G3, A3). Slurs connect notes across measures.

30

32

34

36

38

40

Measures 40-41. Treble clef has a green staff line. Bass clef has a blue staff line. Notes are red and blue.

42

Measures 42-43. Treble clef has a green staff line. Bass clef has a blue staff line. Notes are red and blue.

44

Measures 44-45. Treble clef has a red staff line. Bass clef has a blue staff line. Notes are red and blue.

46

Measures 46-47. Treble clef has a red staff line. Bass clef has a blue staff line. Notes are red and blue.

48

Measures 48-49. Treble clef has a green staff line. Bass clef has a blue staff line. Notes are red and blue.

50

Measures 50-52. Treble clef has a green line extension. Notes are colored green, red, and blue. Bass clef has blue notes and rests.

53

Measures 53-55. Treble clef has a green line extension. Notes are colored green, red, and blue. Bass clef has blue notes and rests.

56

Measures 56-58. Treble clef has a green line extension. Notes are colored green, red, and blue. Bass clef has blue notes and rests.

59

Measures 59-60. Treble clef has a green line extension. Notes are colored green, red, and blue. Bass clef has blue notes and rests.

61

Measures 61-63. Treble clef has a green line extension. Notes are colored green, red, and blue. Bass clef has blue notes and rests. Measure 63 has an orange line extension.