

# Hardhearted Hannah

Milton Ager

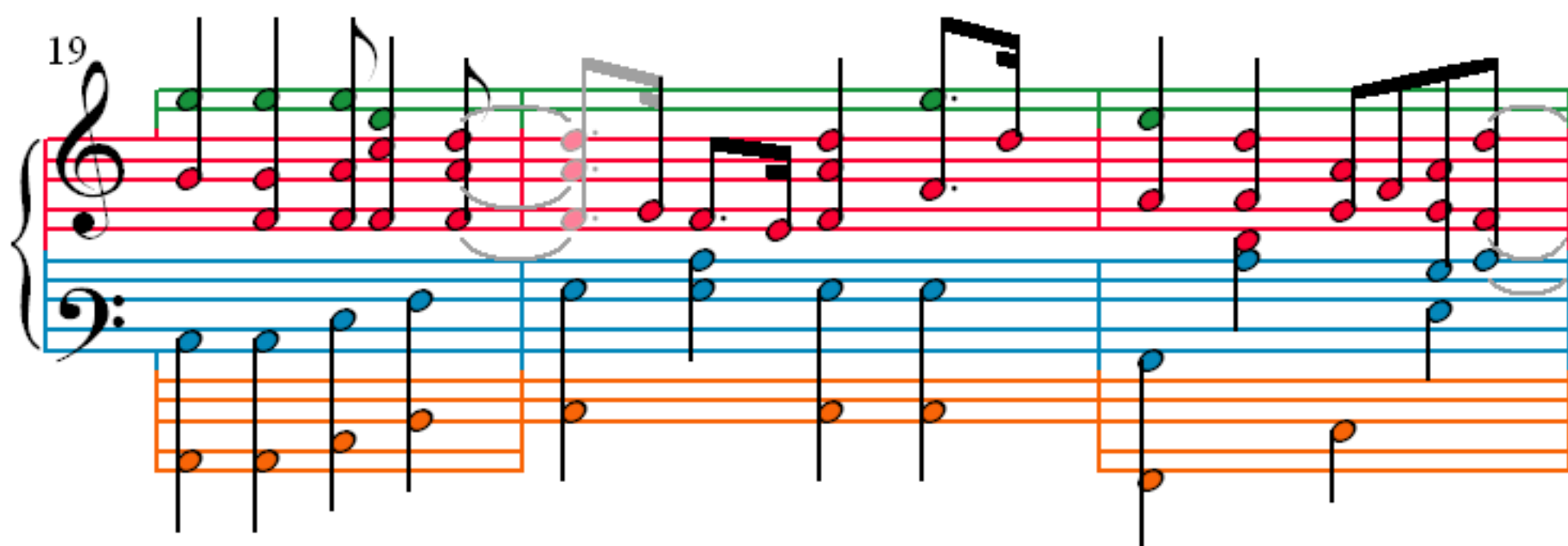
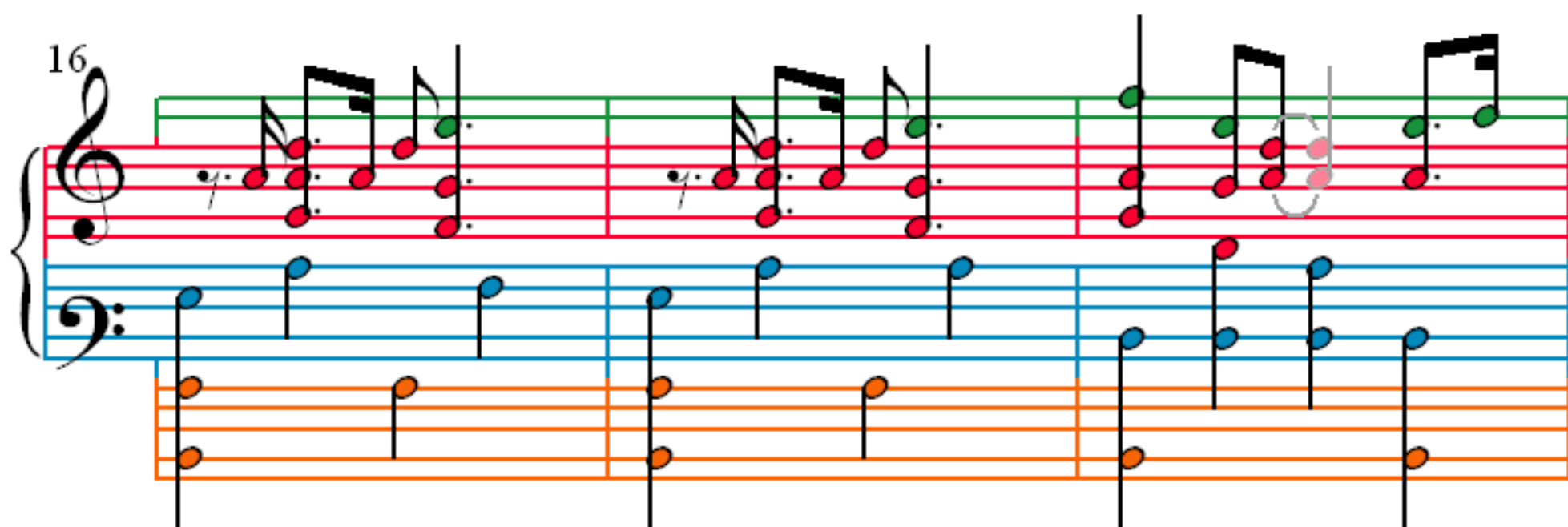
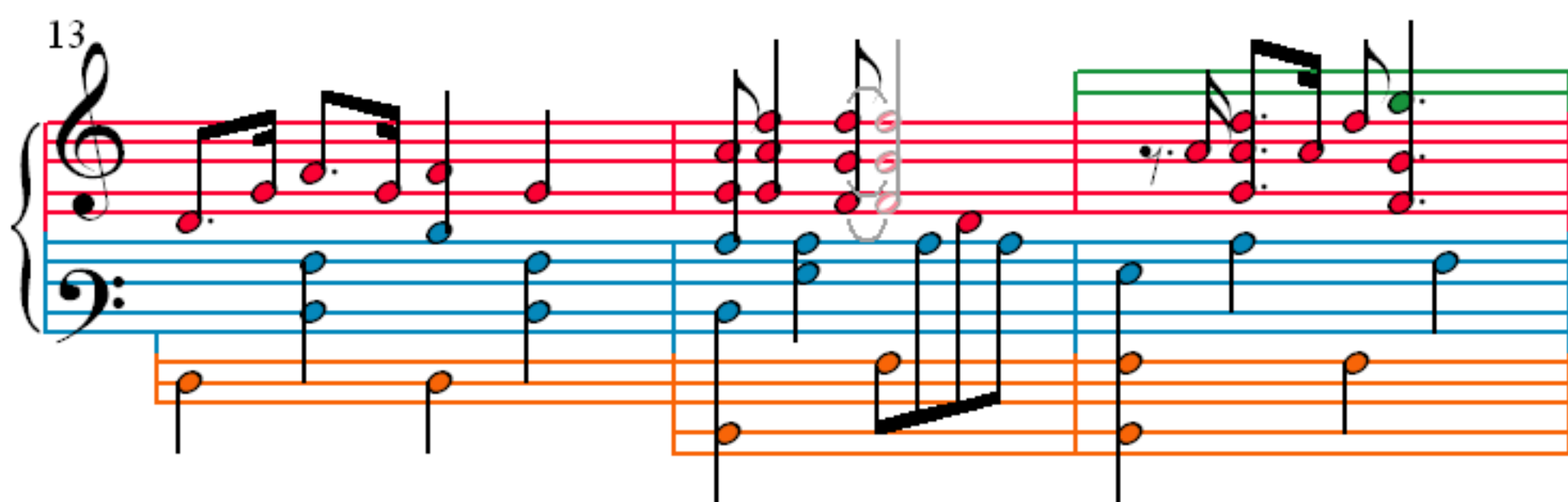
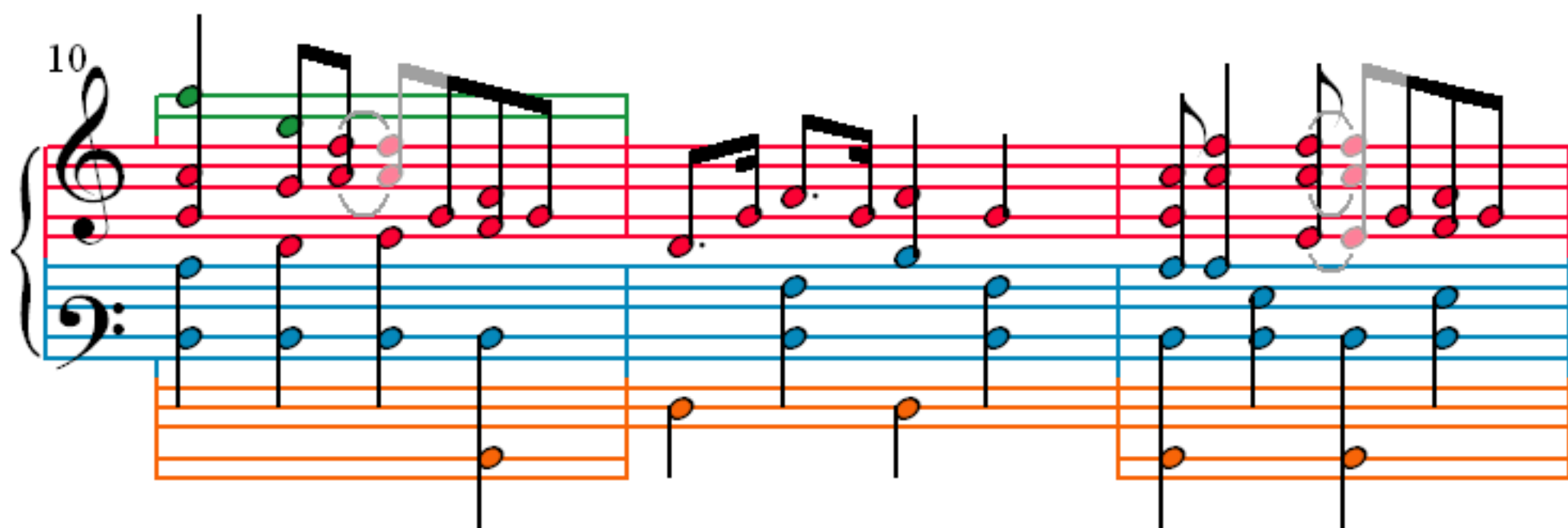
The musical score for "Hardhearted Hannah" by Milton Ager is presented in four systems, covering measures 1 through 7. The score is written for piano and features a complex arrangement of staves and notes.

**System 1 (Measures 1-2):** The first system begins with a treble clef and a key signature of one sharp (F#). The melody is written on a single staff with a green line above it. The accompaniment consists of a bass line on a blue staff and a lower line on an orange staff. The notes are colored green, red, and blue.

**System 2 (Measures 3-4):** The second system continues the melody and accompaniment. The notes are colored red, blue, and orange.

**System 3 (Measures 5-6):** The third system shows the melody and accompaniment. The notes are colored red, blue, and orange.

**System 4 (Measures 7-8):** The fourth system concludes the piece. The notes are colored red, blue, and orange.



22

24

27

30

33

Measures 33-35. Treble clef: eighth-note chords. Bass clef: walking bass line. A third staff shows a single-note line.

36

Measures 36-38. Treble clef: eighth-note chords. Bass clef: walking bass line. A third staff shows a single-note line.

39

Measures 39-41. Treble clef: eighth-note chords. Bass clef: walking bass line. A third staff shows a single-note line.

42

Measures 42-44. Treble clef: eighth-note chords. Bass clef: walking bass line. A third staff shows a single-note line.