

# Hula Lou

Milton Charles

1

3

5

7

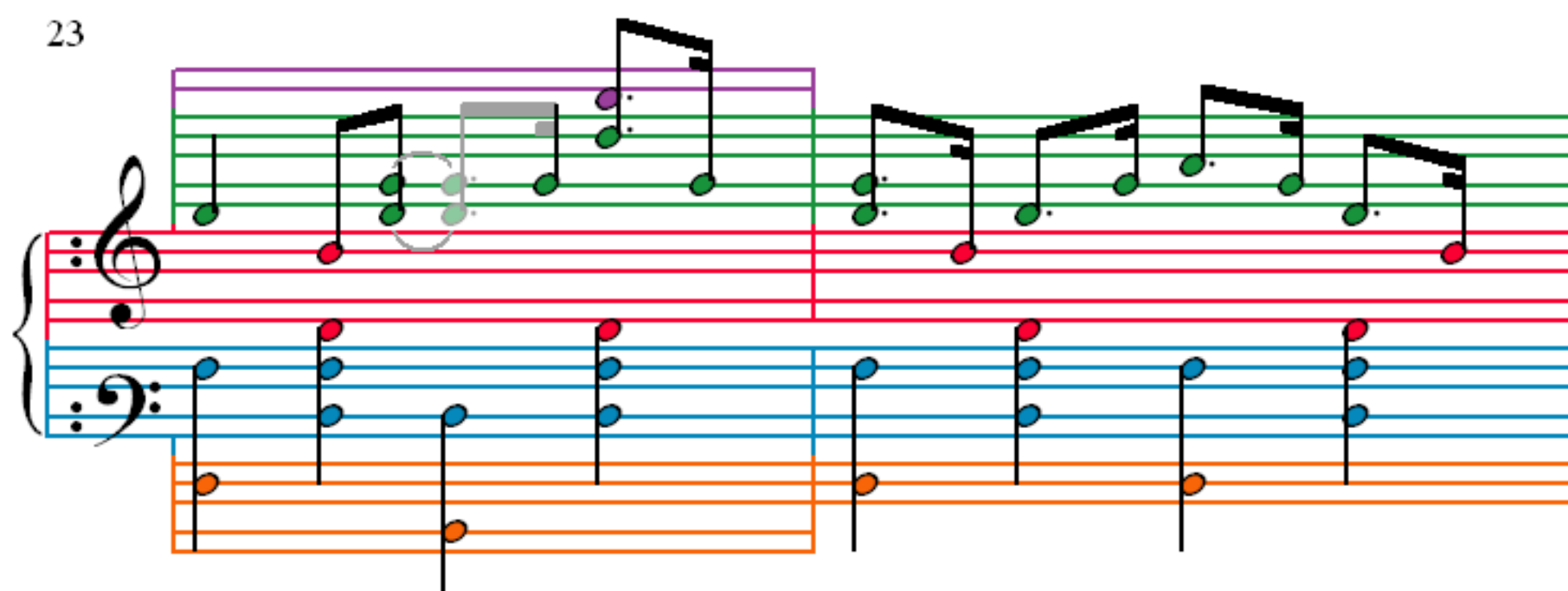
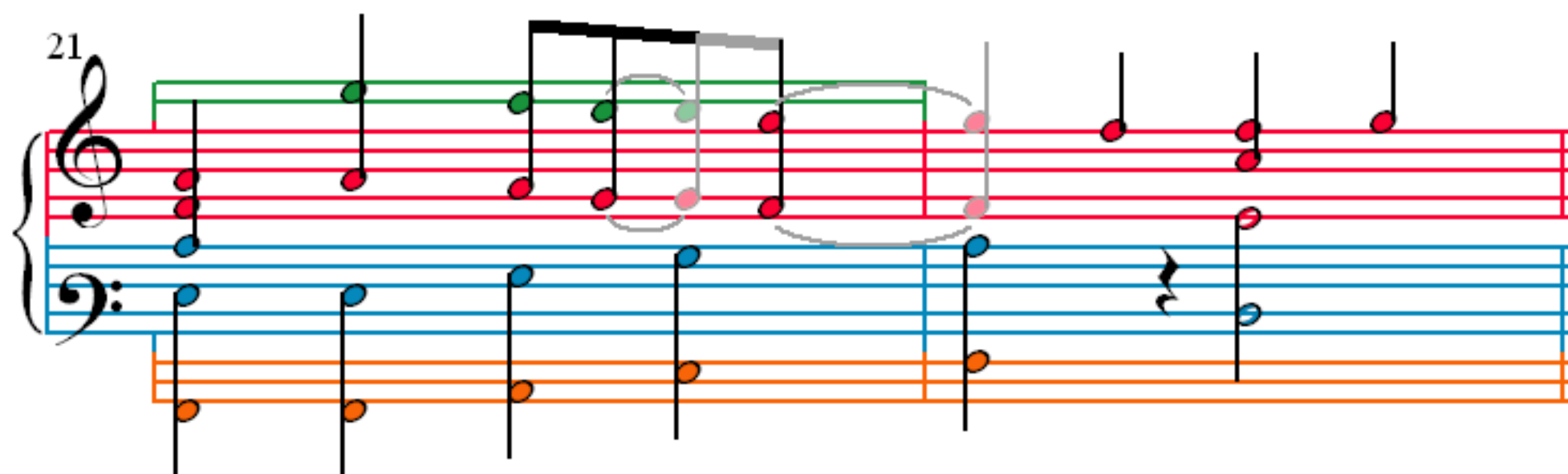
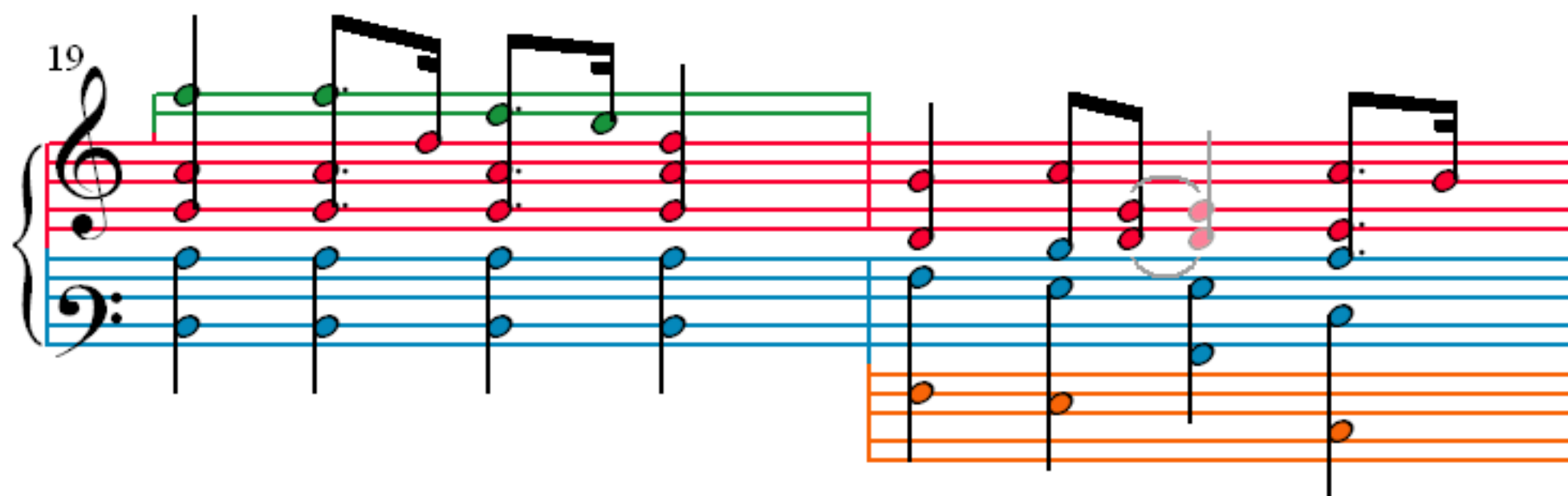
The image displays the first eight measures of the piano score for the song 'Hula Lou' by Milton Charles. The music is written in 4/4 time and D major. It features a three-staff system: a treble staff (green), a middle staff (red), and a bass staff (blue). The right hand plays a melody primarily in the treble staff, while the left hand provides harmonic support in the middle and bass staves. Measures 1-2 show a melodic phrase in the treble and a bass line in the middle staff. Measures 3-4 continue the melody and introduce a new bass line. Measures 5-6 feature a more complex melodic line with some grace notes and a bass line. Measures 7-8 conclude the phrase with a final melodic flourish and a bass line. The notation includes various musical symbols such as notes, rests, and bar lines, with some notes highlighted in different colors (green, red, blue, orange) to indicate different parts of the melody or harmony.

9

11

13

15



25

27

29

31

33

35

38

41

43

45

47

50