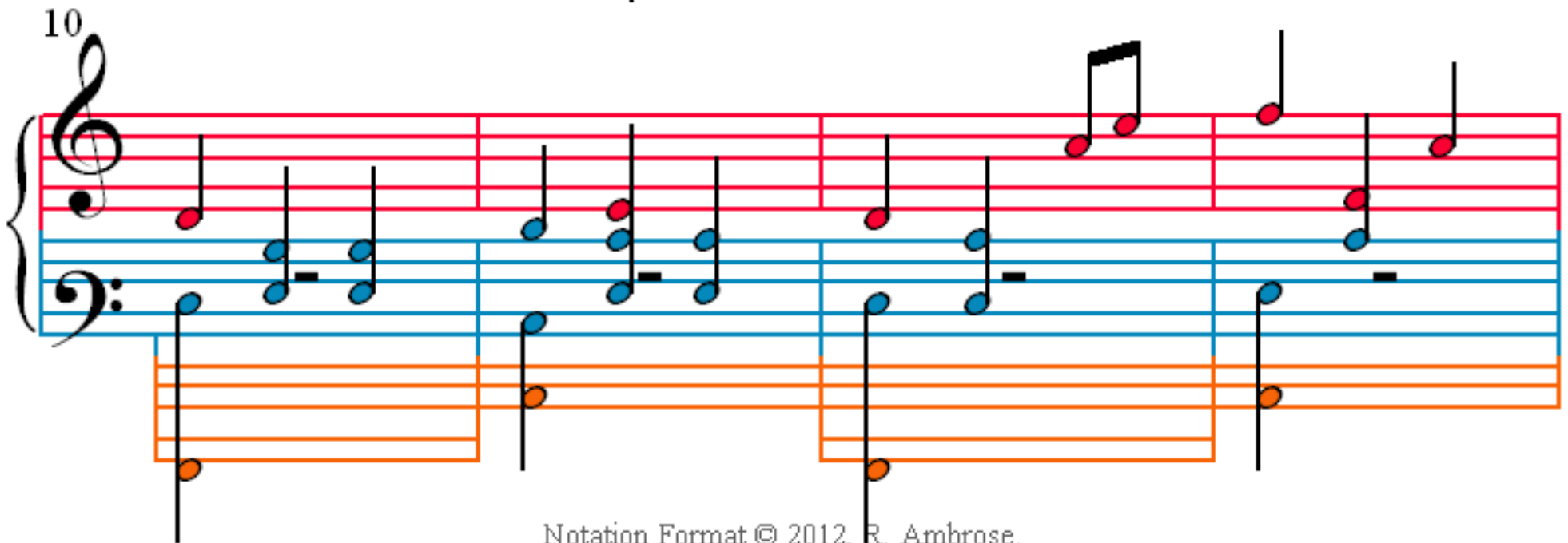
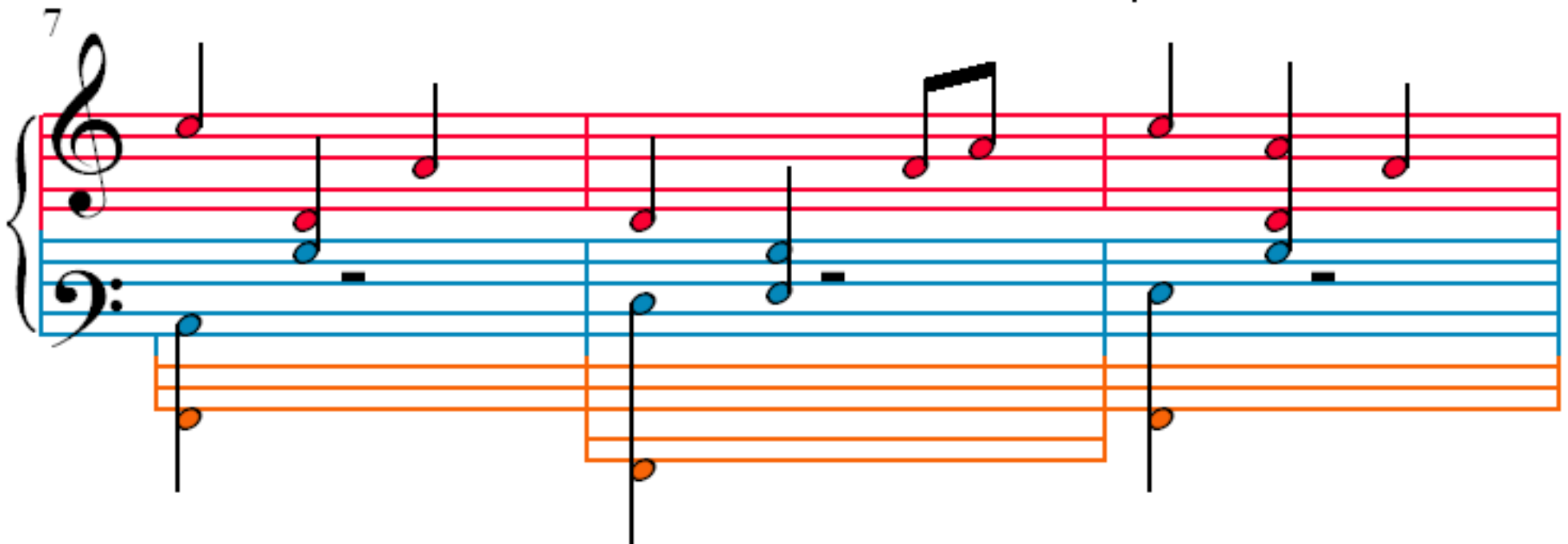
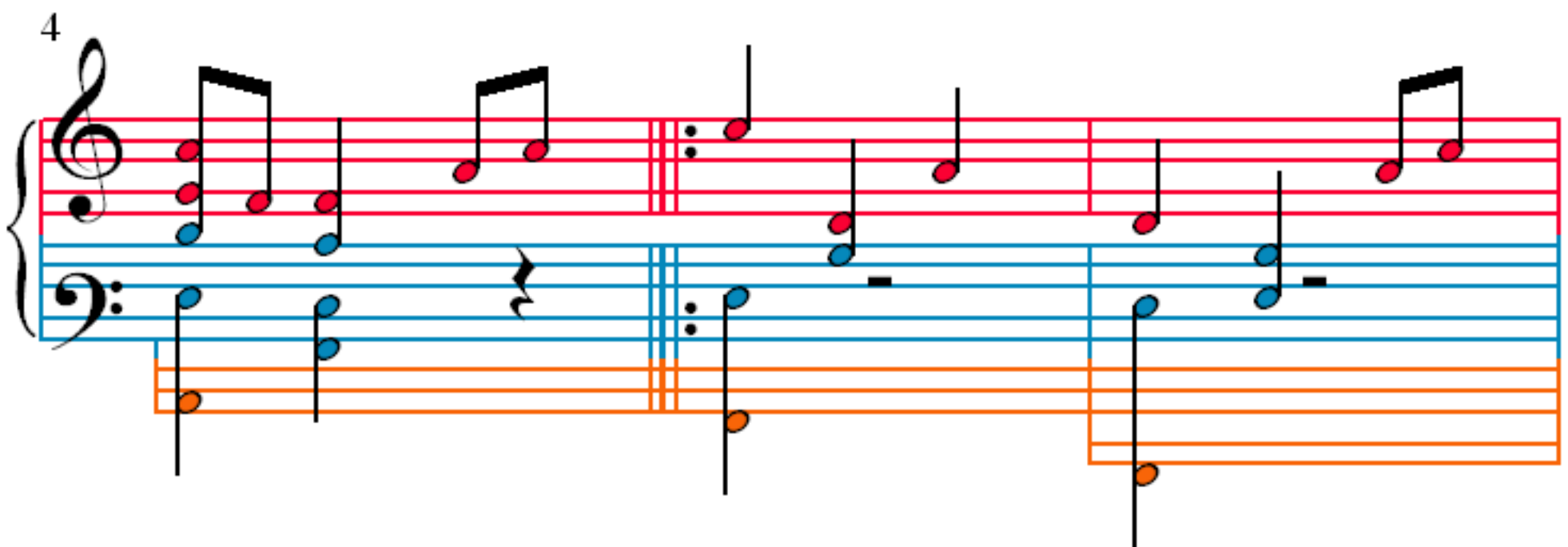
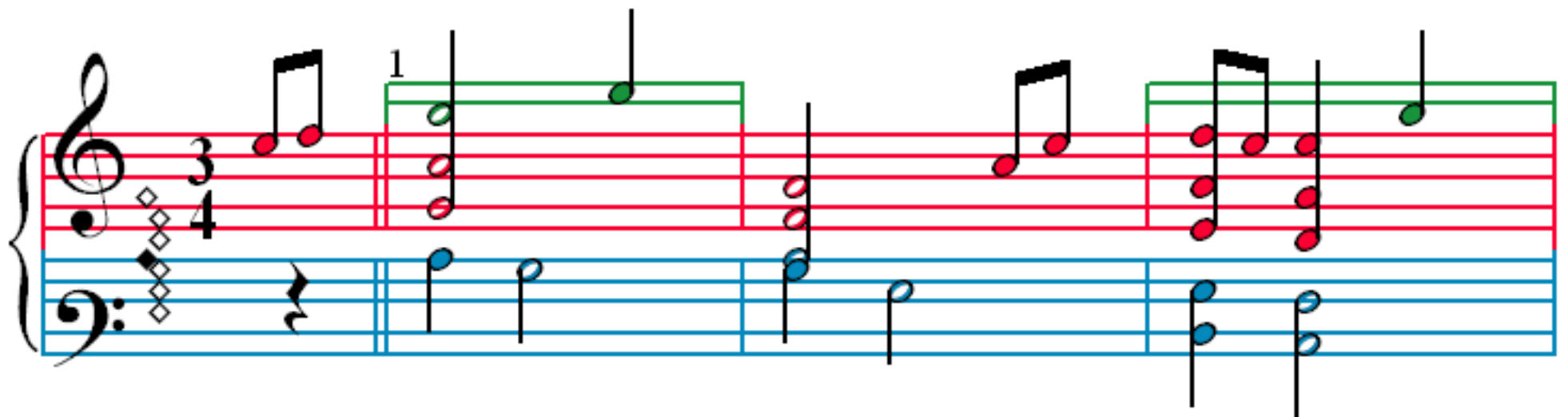


Married

John Kander



14

Measures 14-16. Treble clef: Red notes. Bass clef: Blue notes. Orange staves below show a sequence of notes with stems.

17

Measures 17-19. Treble clef: Red notes. Bass clef: Blue notes. Orange staves below show a sequence of notes with stems.

20

Measures 20-23. Treble clef: Red notes. Bass clef: Blue notes. Orange staves below show a sequence of notes with stems. A green box highlights measures 21-22 in the treble clef.

24

Measures 24-27. Treble clef: Red notes. Bass clef: Blue notes. Orange staves below show a sequence of notes with stems.

28

Measures 28-30. Treble clef has red notes, bass clef has blue notes. An orange staff is below the bass staff.

31

Measures 31-33. Treble clef has red notes, bass clef has blue notes. An orange staff is below the bass staff.

34

Measures 34-36. Treble clef has red notes, bass clef has blue notes. An orange staff is below the bass staff.

1
37

Measures 37-40. Treble clef has red notes, bass clef has blue notes. An orange staff is below the bass staff.