

Alice. Where Art Thou?

J.Ascher(1829-1869)

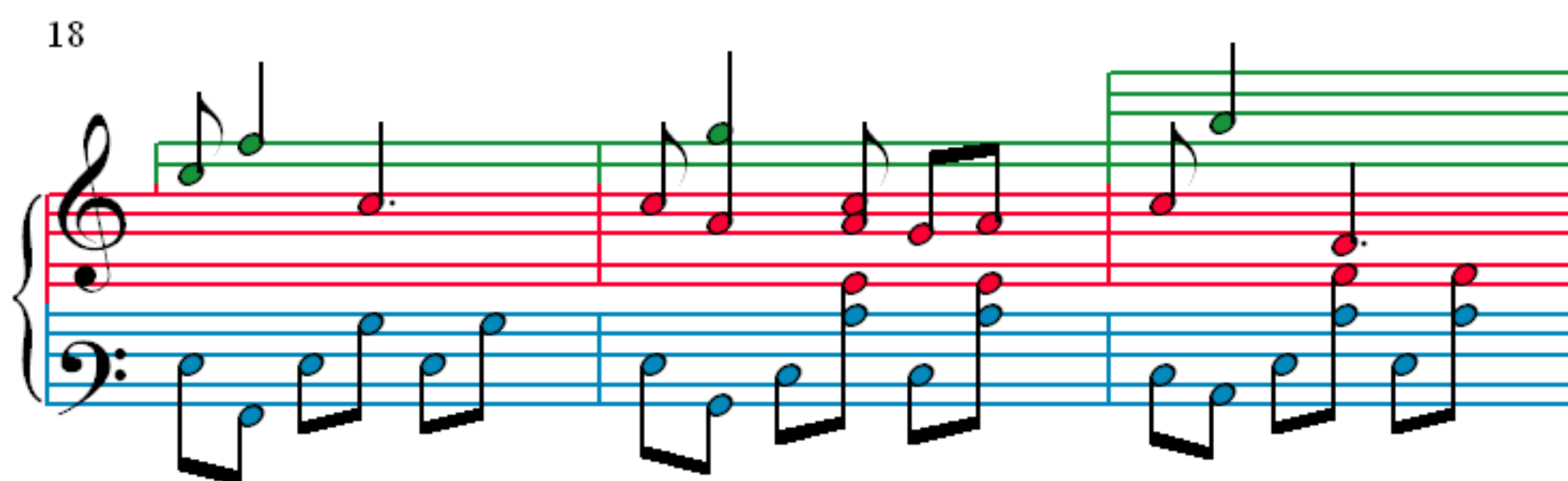
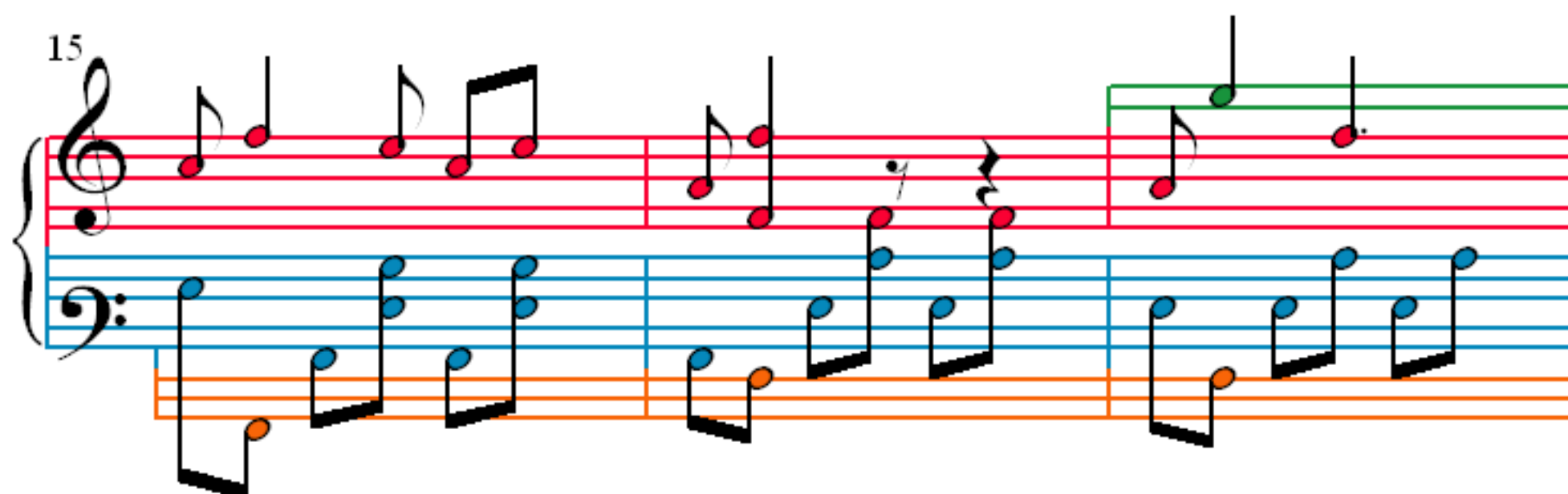
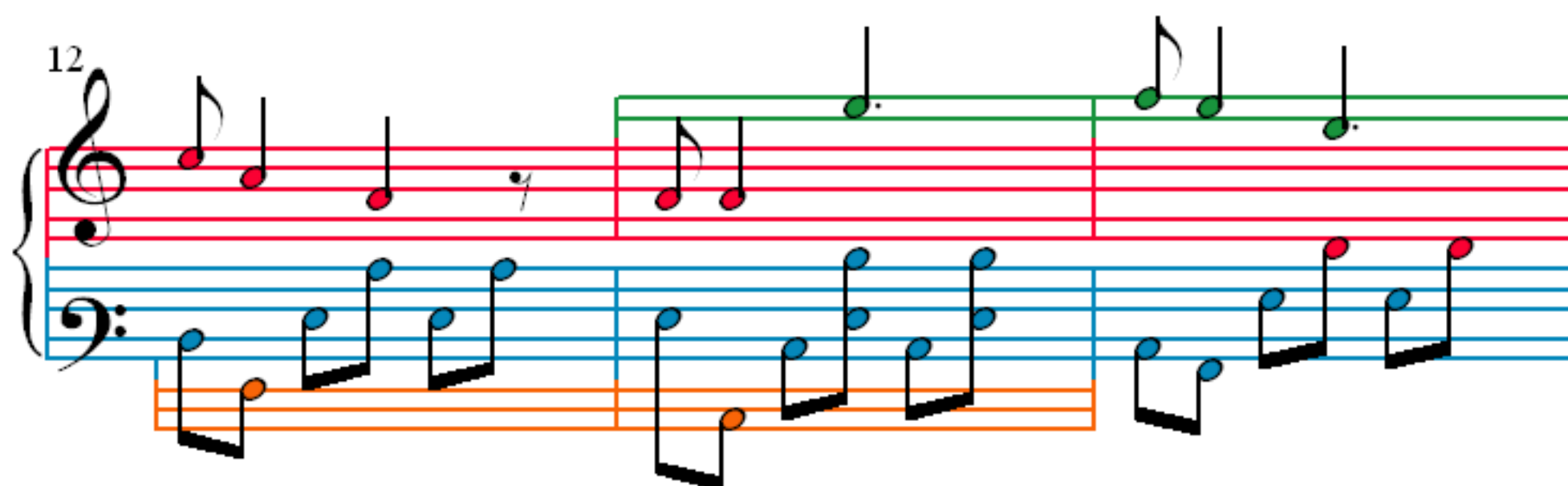
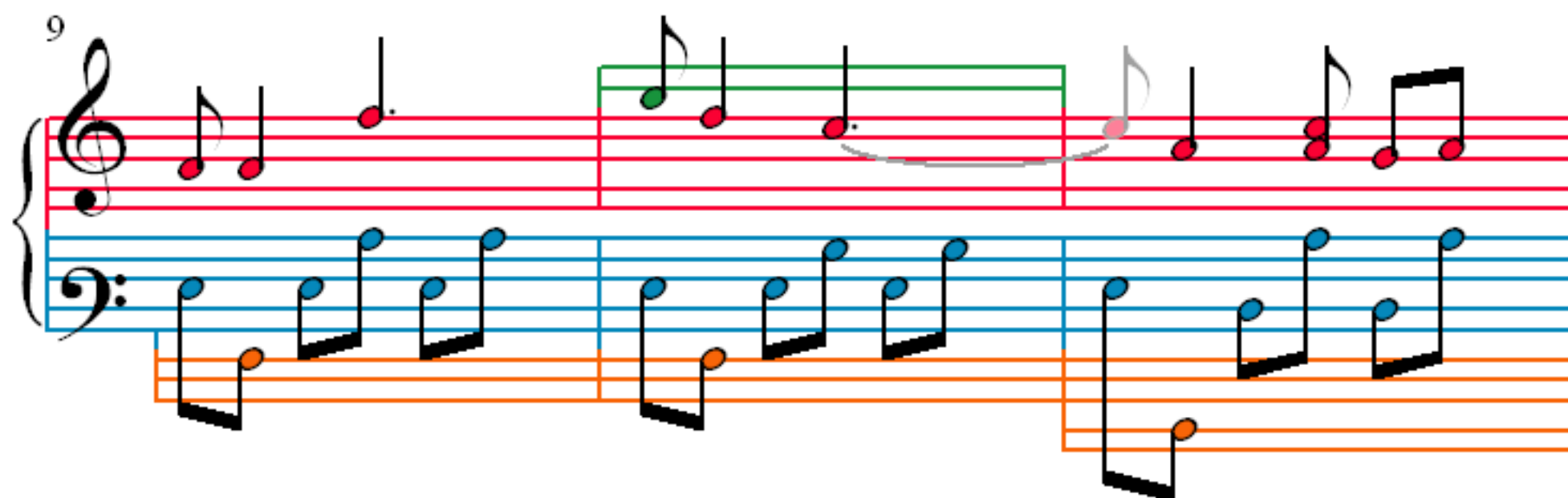
1

3

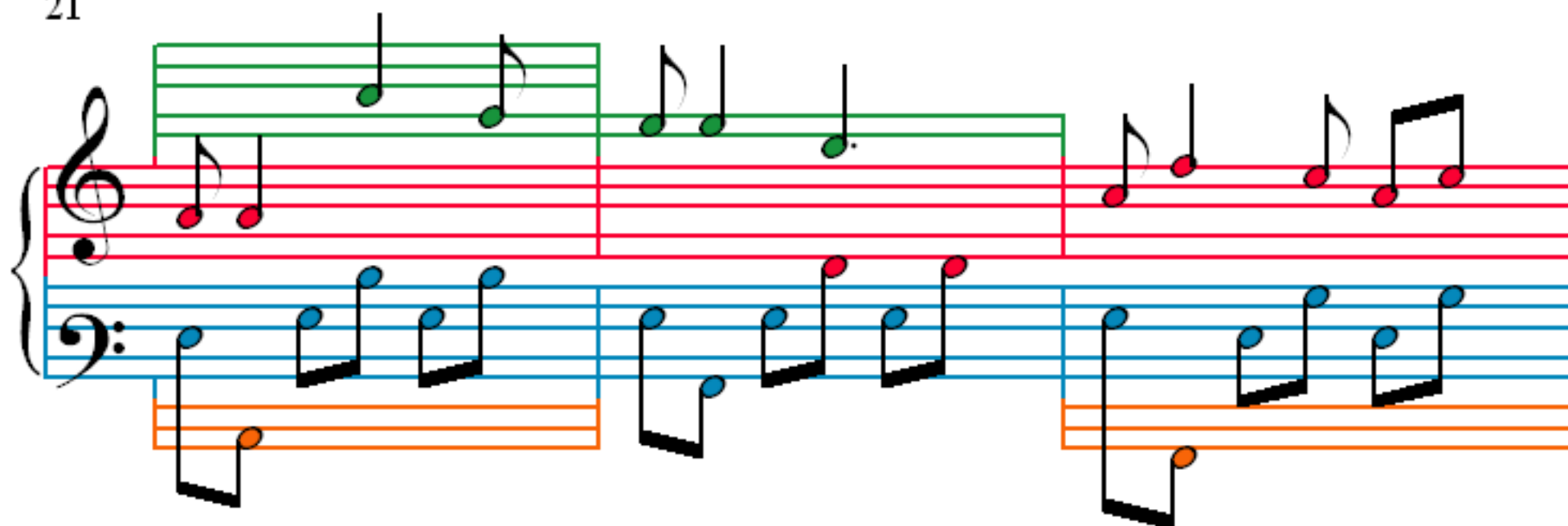
5

7

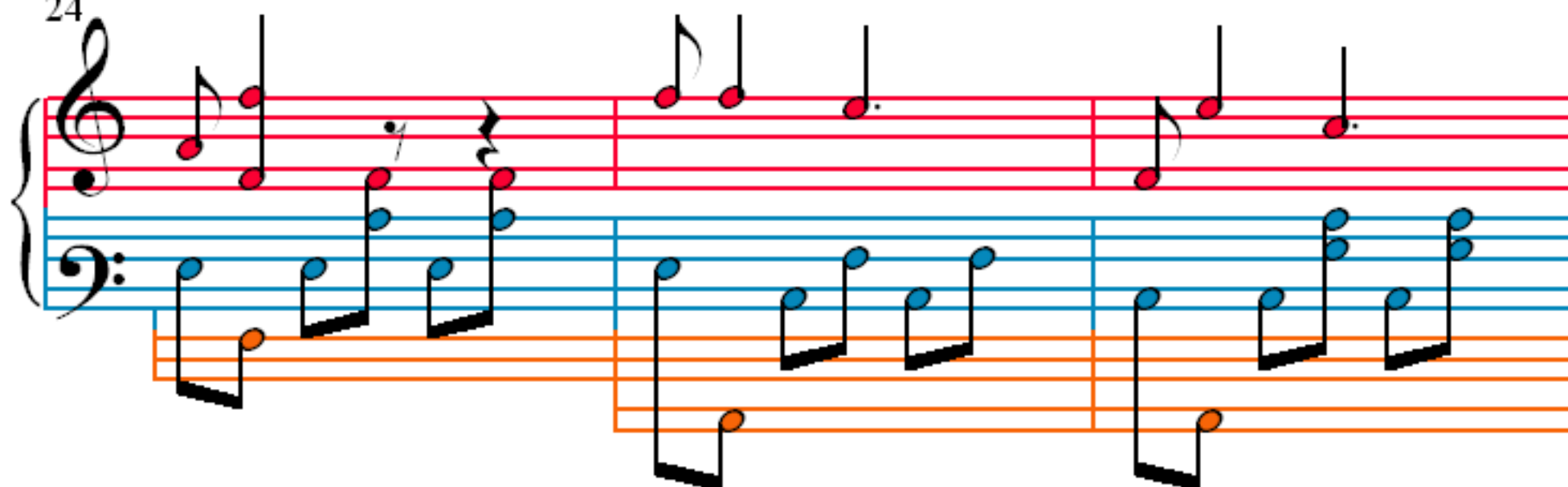
The image displays a musical score for the piece 'Alice. Where Art Thou?' by J. Ascher (1829-1869). The score is presented in four systems, each containing two staves (treble and bass clef) and a third staff below the bass staff. The first system is marked with a '1' and a '3/4' time signature. The second system is marked with a '3'. The third system is marked with a '5'. The fourth system is marked with a '7'. The notation includes various musical symbols such as notes, rests, and accidentals, with some notes highlighted in different colors (red, blue, orange, green, purple) to indicate specific melodic lines or chords. The score is written in a standard musical notation format.



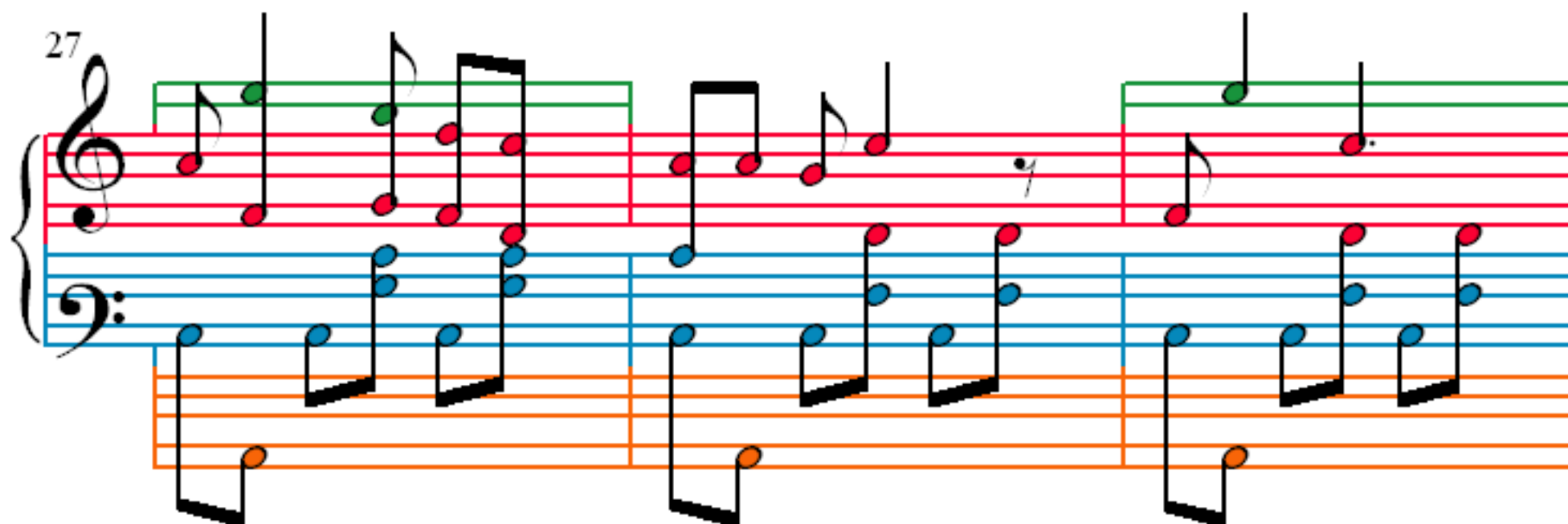
21



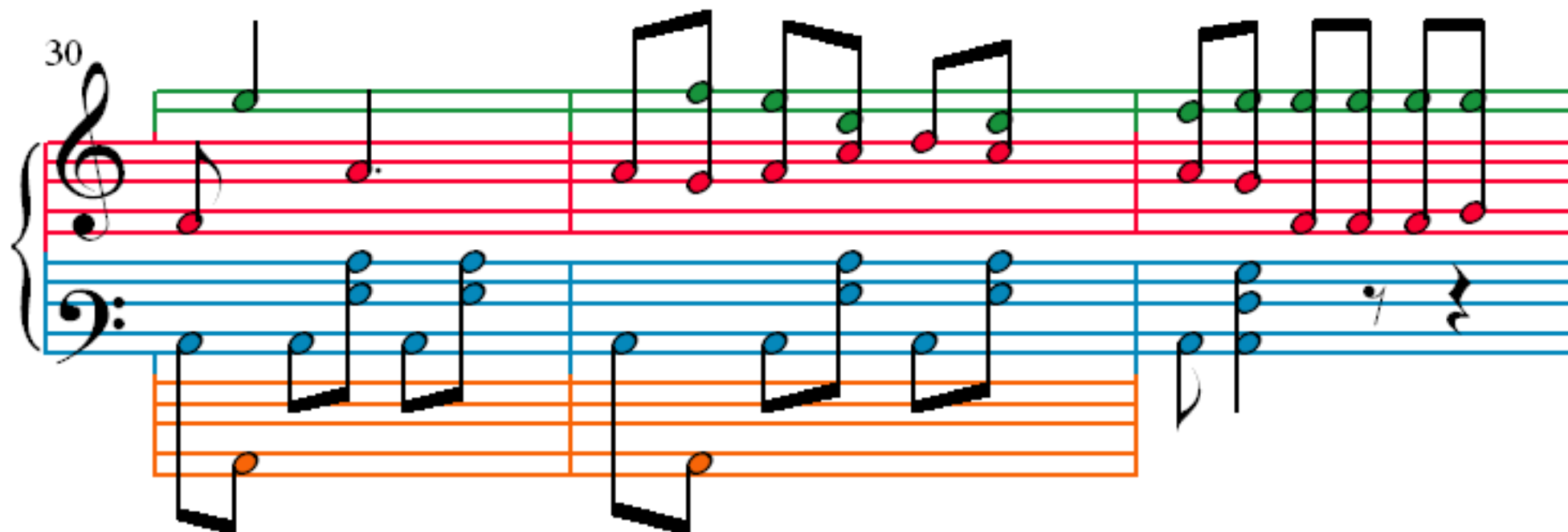
24



27



30



33

Measures 33-35. Treble clef: G4 (green), A4 (red), B4 (green), C5 (red), B4 (green), A4 (red), G4 (green), F#4 (grey), E4 (red), D4 (green). Bass clef: C3 (orange), D3 (blue), E3 (blue), F3 (blue), G3 (blue), A3 (blue), B3 (blue), C4 (blue). Third staff: C3 (orange), D3 (blue), E3 (blue), F3 (blue), G3 (blue), A3 (blue), B3 (blue), C4 (blue).

36

Measures 36-38. Treble clef: D4 (green), E4 (red), F#4 (grey), G4 (green), A4 (red), B4 (green), C5 (red), B4 (green), A4 (red), G4 (green), F#4 (grey), E4 (red), D4 (green). Bass clef: C3 (orange), D3 (blue), E3 (blue), F3 (blue), G3 (blue), A3 (blue), B3 (blue), C4 (blue). Third staff: C3 (orange), D3 (blue), E3 (blue), F3 (blue), G3 (blue), A3 (blue), B3 (blue), C4 (blue).

39

Measures 39-41. Treble clef: D4 (green), E4 (red), F#4 (grey), G4 (green), A4 (red), B4 (green), C5 (red), B4 (green), A4 (red), G4 (green), F#4 (grey), E4 (red), D4 (green). Bass clef: C3 (orange), D3 (blue), E3 (blue), F3 (blue), G3 (blue), A3 (blue), B3 (blue), C4 (blue). Third staff: C3 (orange), D3 (blue), E3 (blue), F3 (blue), G3 (blue), A3 (blue), B3 (blue), C4 (blue).

42

Measures 42-45. Treble clef: D4 (green), E4 (red), F#4 (grey), G4 (green), A4 (red), B4 (green), C5 (red), B4 (green), A4 (red), G4 (green), F#4 (grey), E4 (red), D4 (green). Bass clef: C3 (orange), D3 (blue), E3 (blue), F3 (blue), G3 (blue), A3 (blue), B3 (blue), C4 (blue). Third staff: C3 (orange), D3 (blue), E3 (blue), F3 (blue), G3 (blue), A3 (blue), B3 (blue), C4 (blue).