

Preludio con Fuga

BWV 895

J. S. Bach (1685–1750)

The image displays the first seven measures of the Preludio con Fuga BWV 895 by J.S. Bach. The score is written for piano in 4/4 time, featuring a treble and bass staff joined by a brace. The notation includes various musical symbols such as treble and bass clefs, a 4/4 time signature, and a key signature of one sharp (F#). The notes are color-coded: red for the right hand and blue for the left hand. Measure numbers 1, 3, 5, and 7 are indicated at the beginning of their respective systems. The first system (measures 1-2) shows a treble staff with a melodic line and a bass staff with a supporting line. The second system (measures 3-4) continues the melodic development in the treble and the supporting line in the bass. The third system (measures 5-6) features a more complex texture with multiple voices in both hands. The fourth system (measures 7-8) shows a continuation of the melodic and harmonic patterns. The notation includes various musical symbols such as treble and bass clefs, a 4/4 time signature, and a key signature of one sharp (F#). The notes are color-coded: red for the right hand and blue for the left hand. Measure numbers 1, 3, 5, and 7 are indicated at the beginning of their respective systems. The first system (measures 1-2) shows a treble staff with a melodic line and a bass staff with a supporting line. The second system (measures 3-4) continues the melodic development in the treble and the supporting line in the bass. The third system (measures 5-6) features a more complex texture with multiple voices in both hands. The fourth system (measures 7-8) shows a continuation of the melodic and harmonic patterns.

9

11

13

15

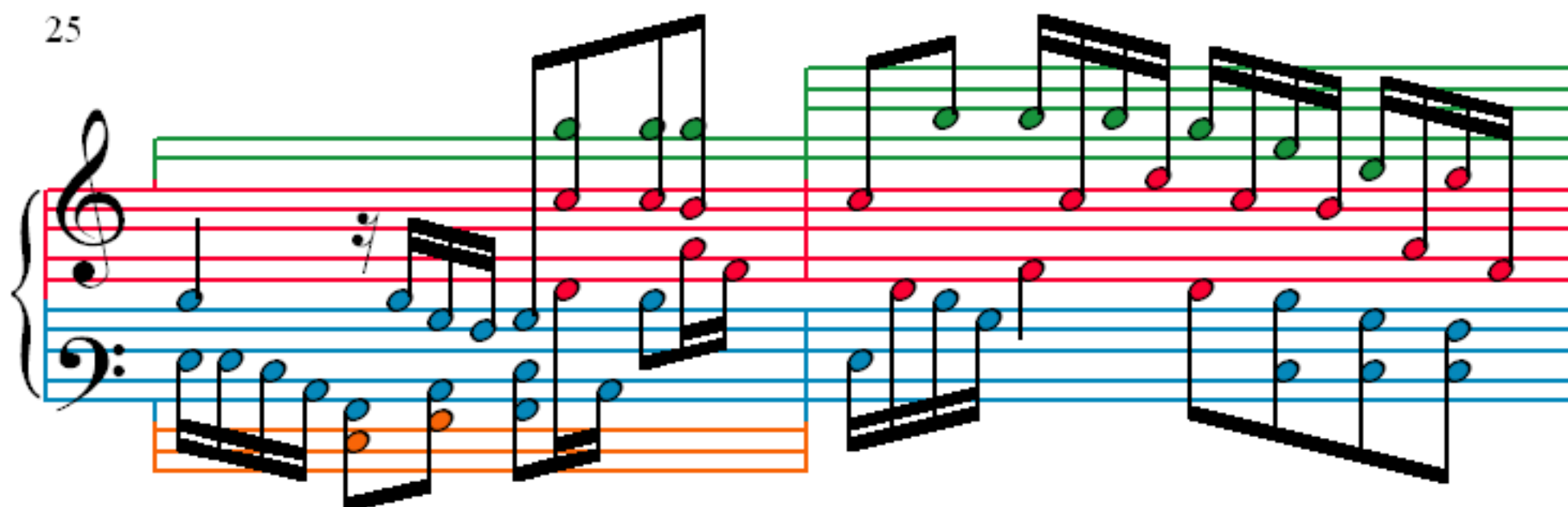
17

19

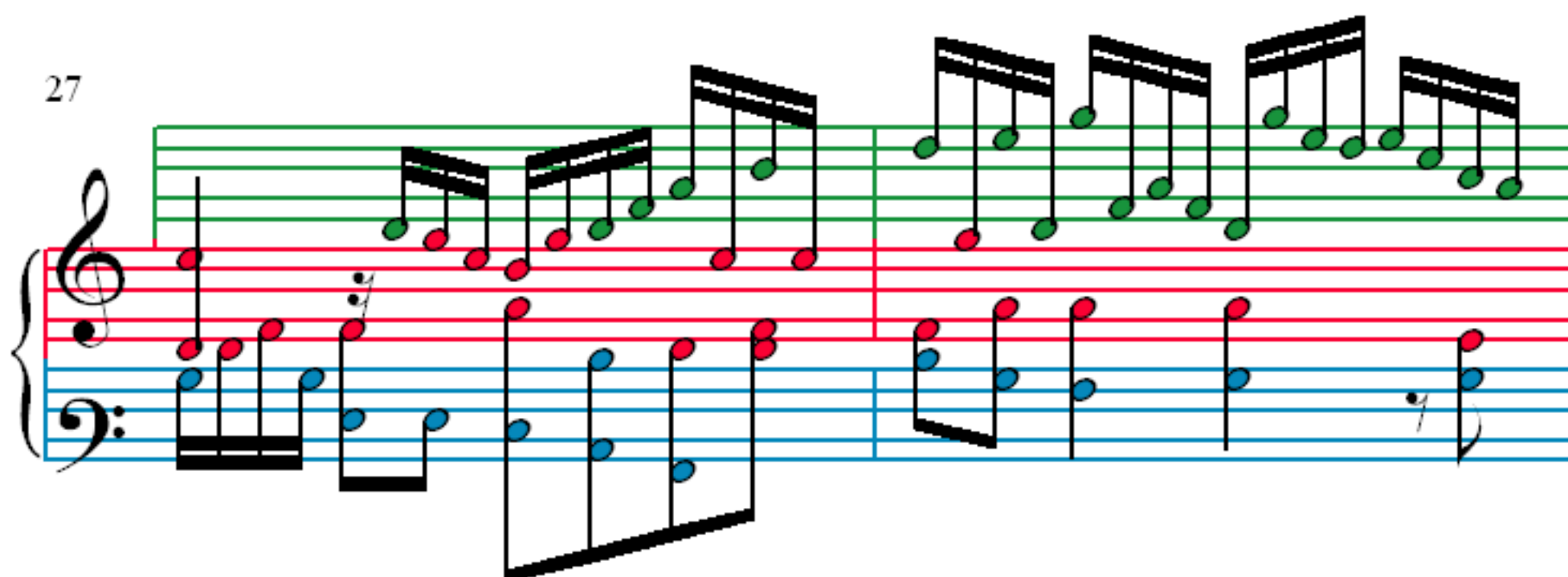
21

23

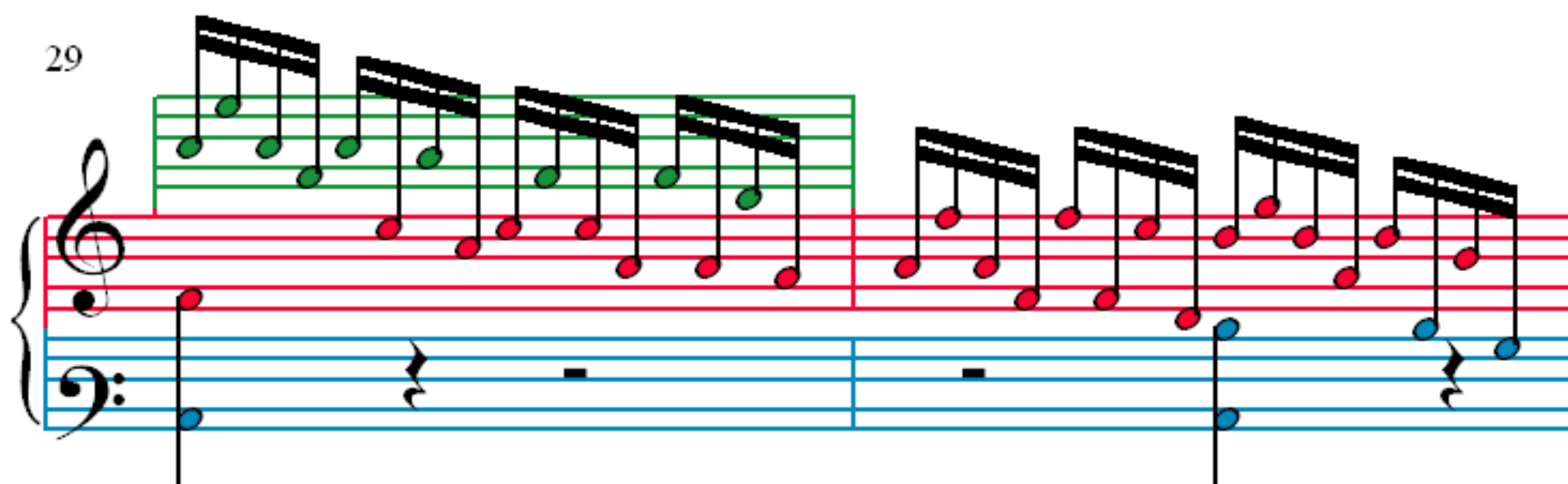
25



27



29



31

