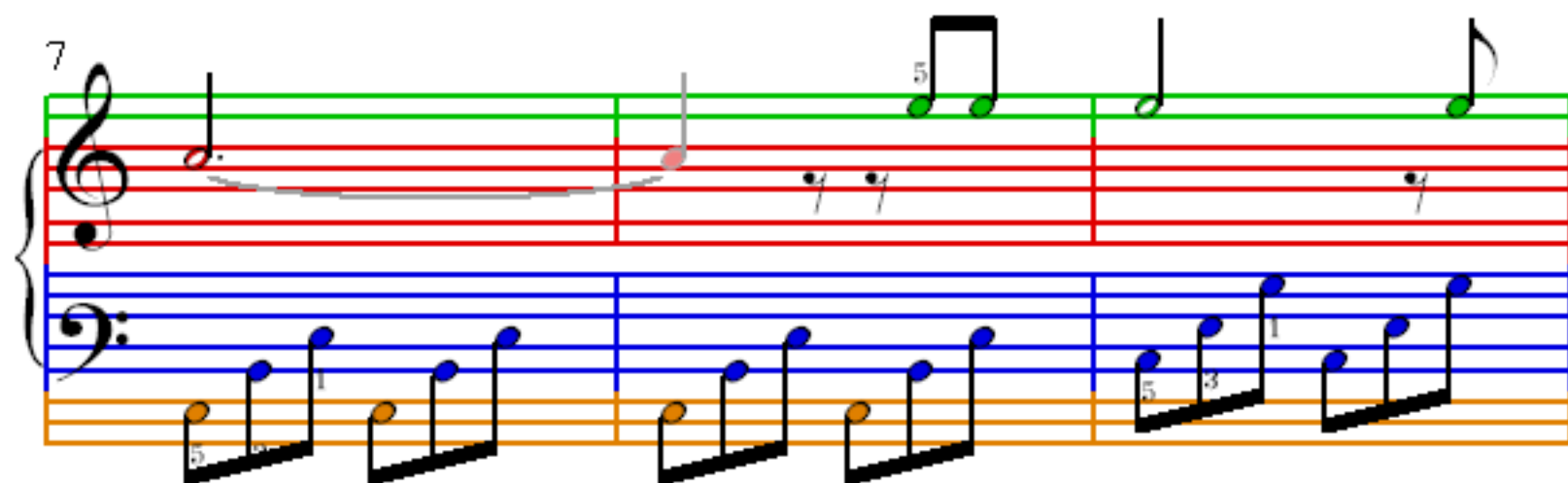
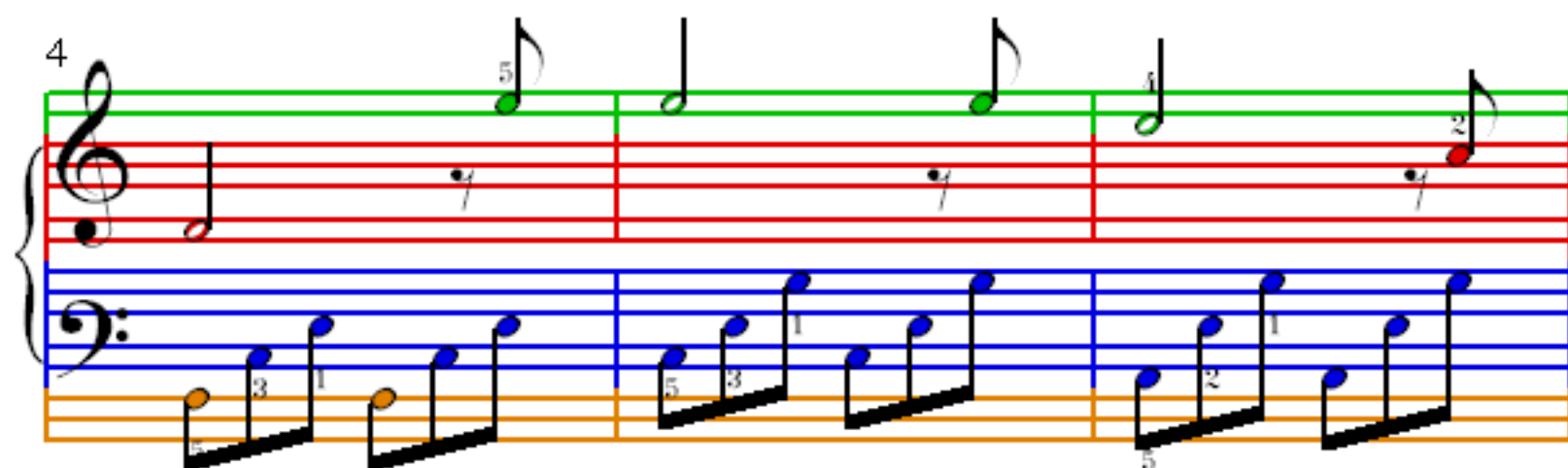
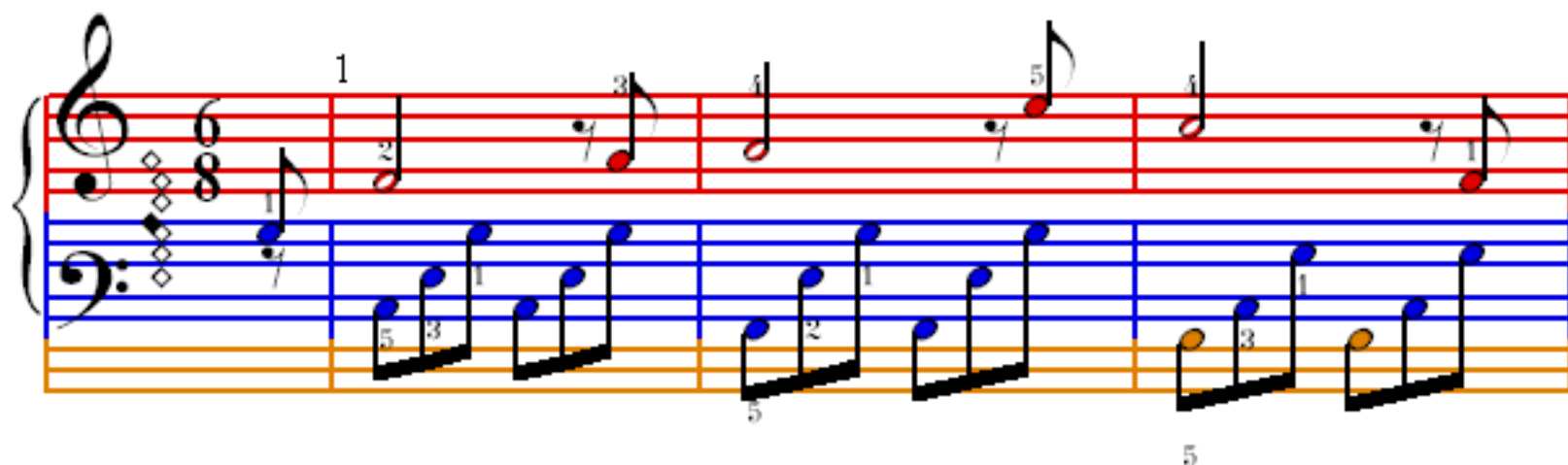


House of The Rising Sun

♩ = 96

American Folk Song



10

Handwritten musical notation for measures 10 and 11. The treble clef staff (red lines) contains a half note G4 in measure 10, a quarter rest in measure 11, and a half note A4 in measure 12. The bass clef staff (blue lines) contains a half note G3 in measure 10, a half note F3 in measure 11, and a half note E3 in measure 12. Fingering numbers 1, 2, 3, and 5 are visible. A green line is drawn above the treble staff.

12

Handwritten musical notation for measures 12, 13, and 14. The treble clef staff (red lines) contains a half note G4 in measure 12, a quarter rest in measure 13, and a half note A4 in measure 14. The bass clef staff (blue lines) contains a half note G3 in measure 12, a half note F3 in measure 13, and a half note E3 in measure 14. Fingering numbers 1, 2, 3, and 5 are visible. A green line is drawn above the treble staff.

15

Handwritten musical notation for measures 15, 16, and 17. The treble clef staff (red lines) contains a half note G4 in measure 15, a quarter rest in measure 16, and a half note A4 in measure 17. The bass clef staff (blue lines) contains a half note G3 in measure 15, a half note F3 in measure 16, and a half note E3 in measure 17. Fingering numbers 1, 2, 3, and 5 are visible. A green line is drawn above the treble staff.