

Tara's Theme

Max Steiner

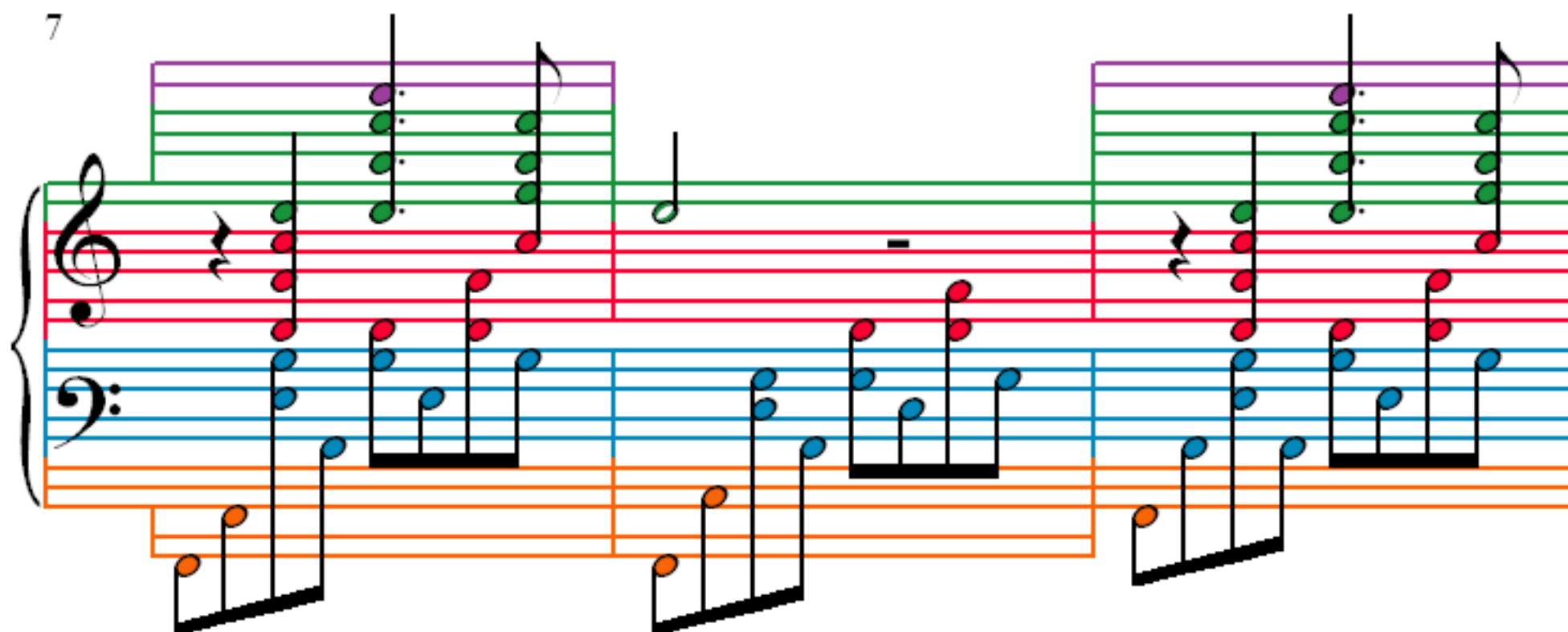
1
♩ = 100

3

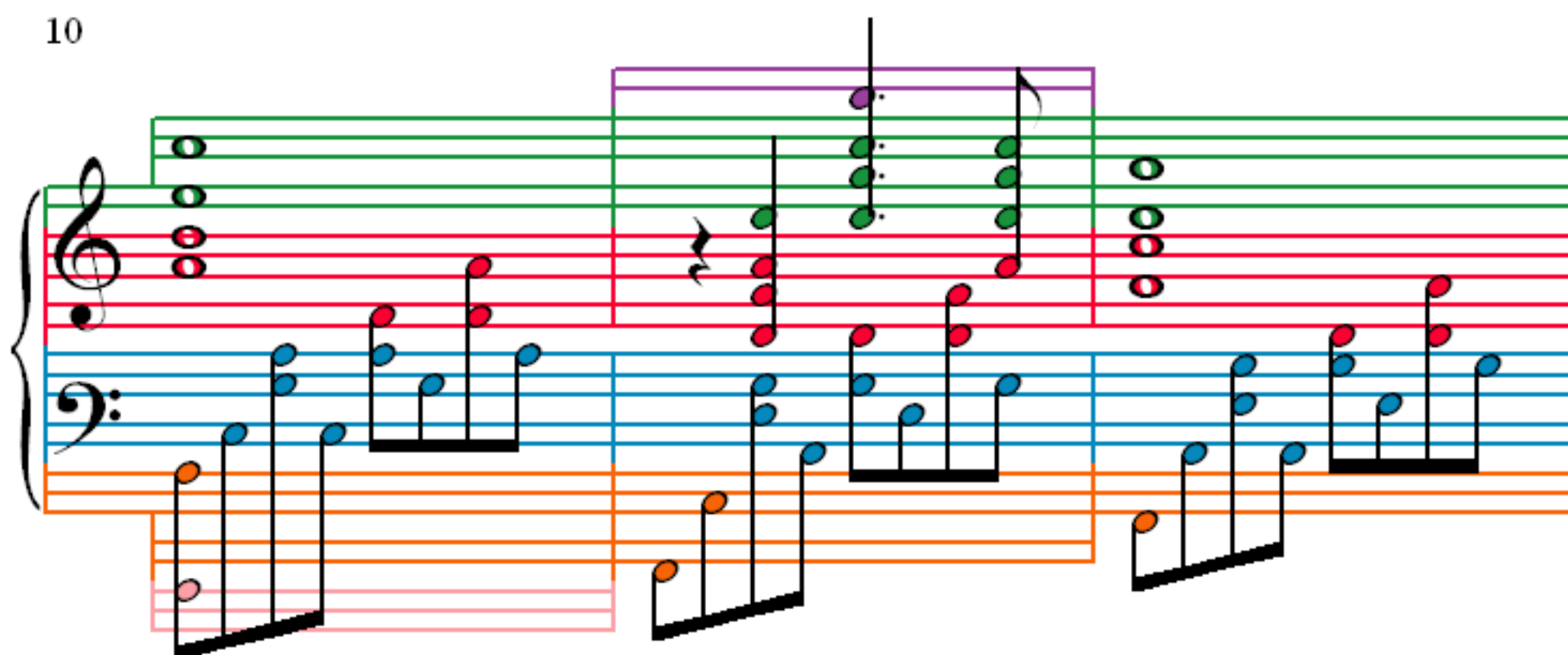
5

The image displays a musical score for 'Tara's Theme' by Max Steiner, organized into three systems of four measures each. The notation is presented in a color-coded format: the treble clef staff is red, the bass clef staff is blue, and the piano accompaniment staves are orange. The melody is written in green, while the piano accompaniment is in blue. The score begins with a tempo marking of 100 beats per minute (♩ = 100) and a 4/4 time signature. The first system (measures 1-4) shows the melody entering in measure 1, followed by the piano accompaniment. The second system (measures 5-8) continues the melody and accompaniment. The third system (measures 9-12) concludes the piece. The notation includes various musical symbols such as notes, rests, and bar lines, all rendered in a clean, modern style.

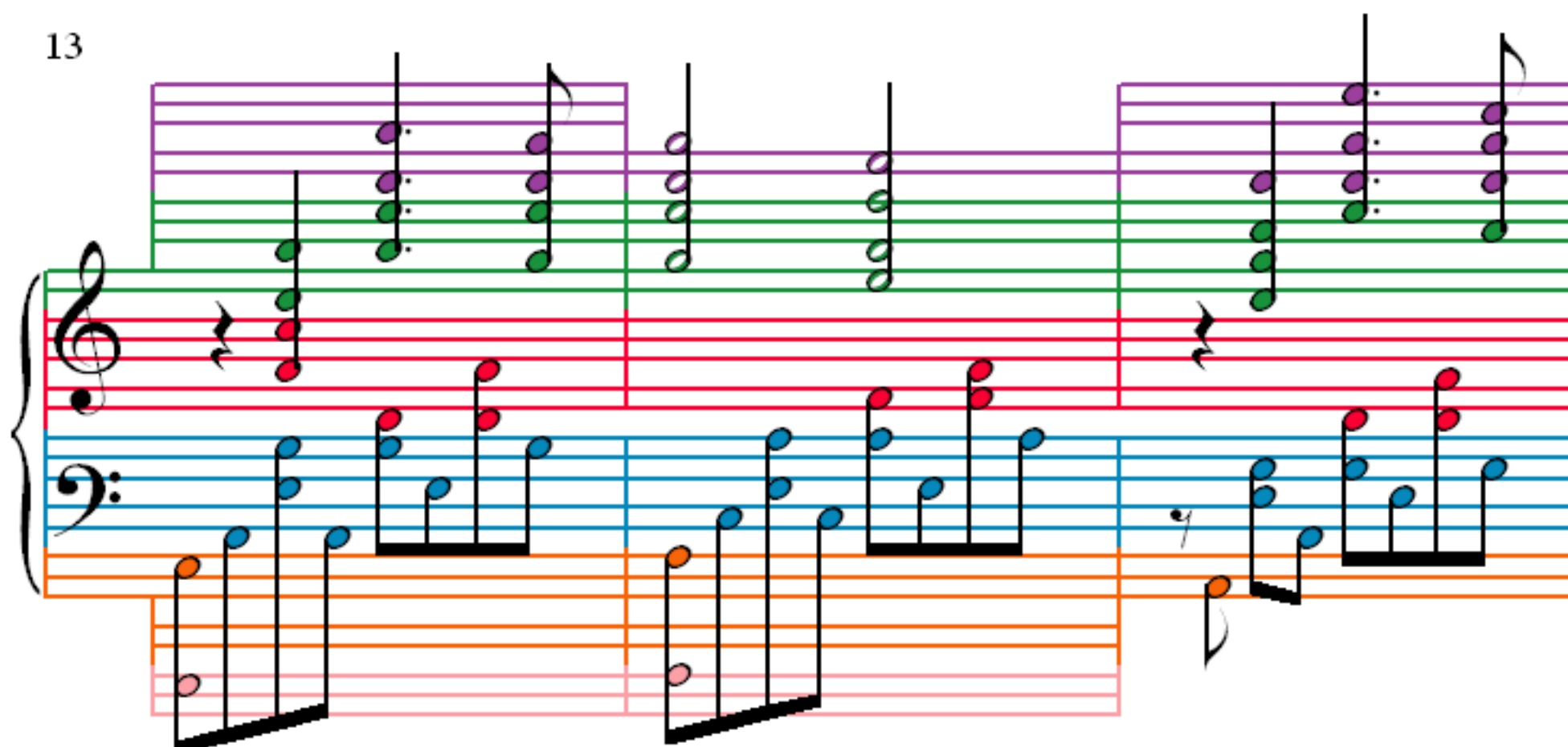
7



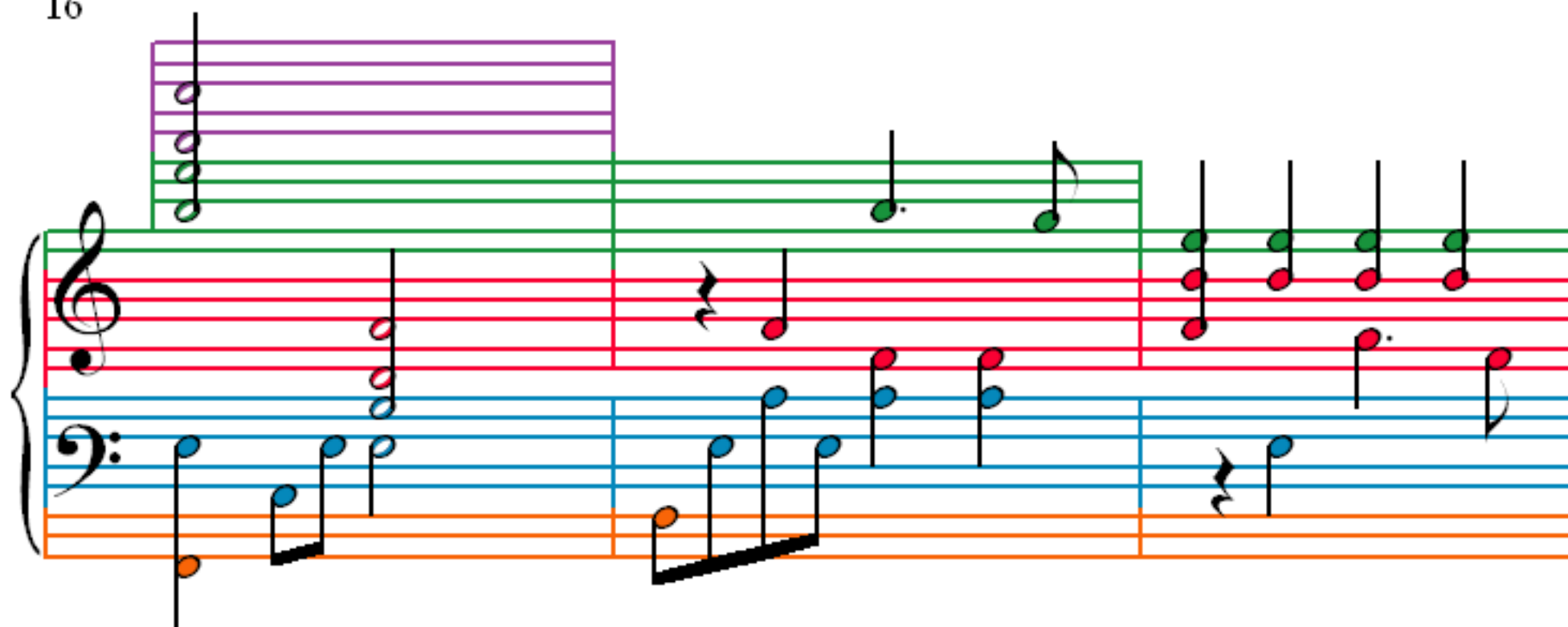
10



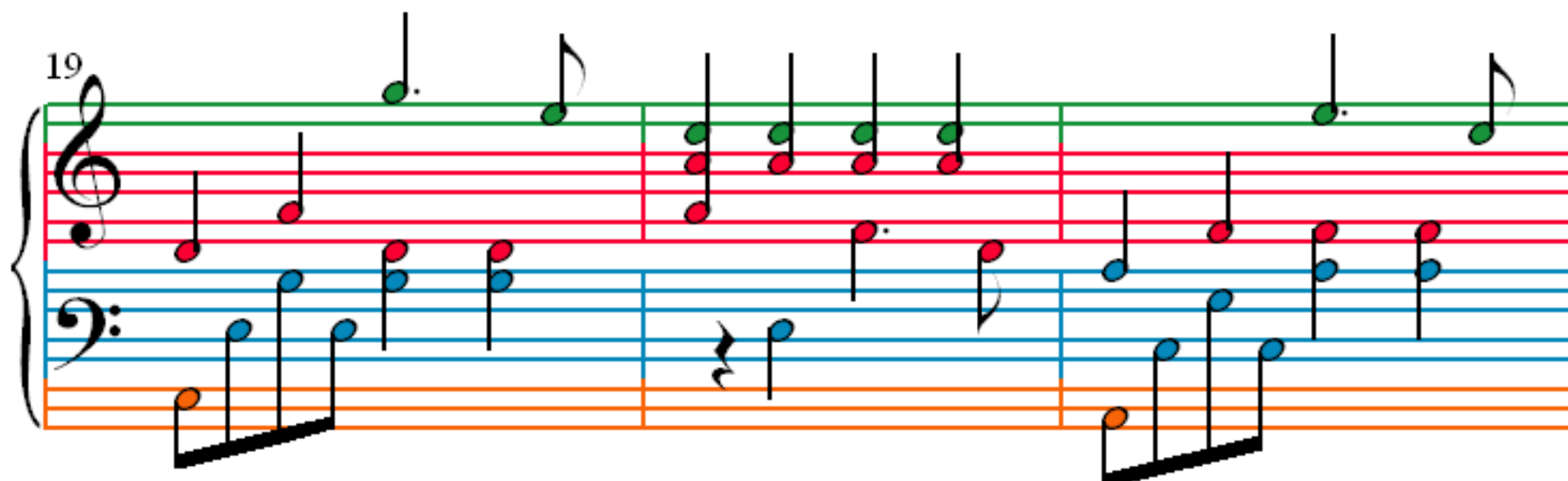
13



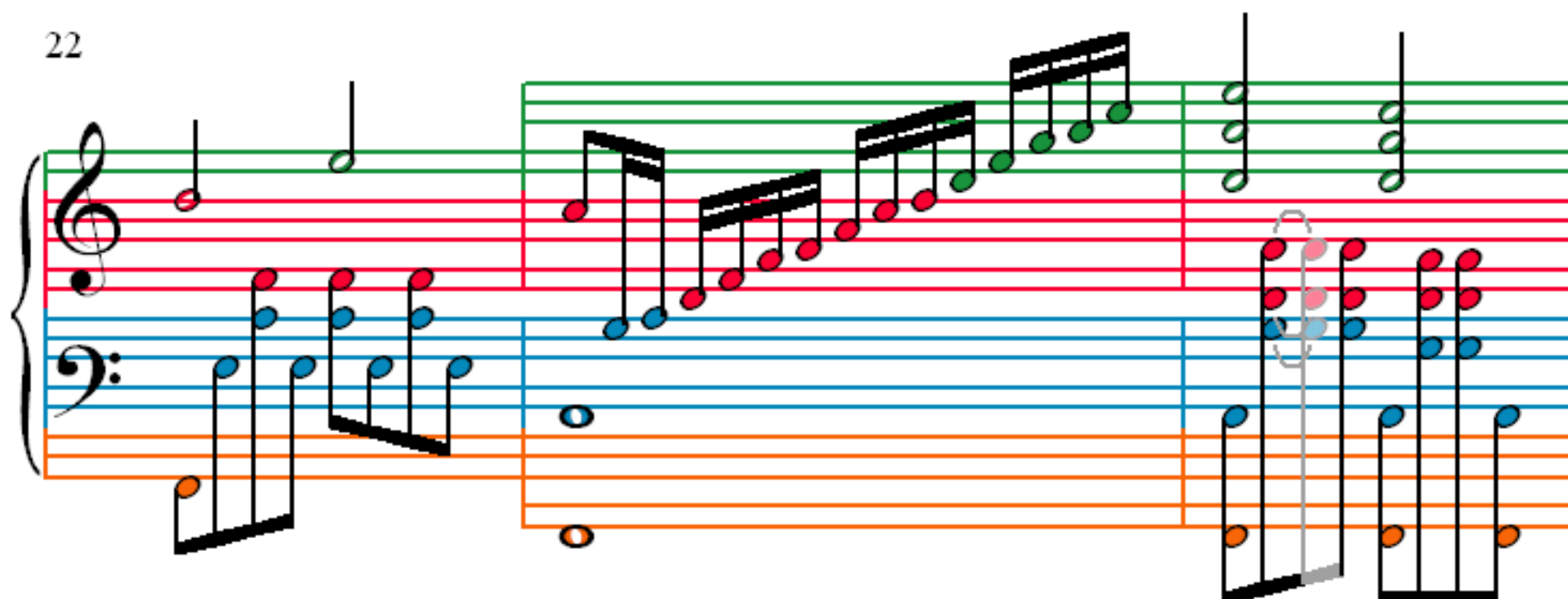
16



19



22



25

28

31

34

3

3

37

40

44

47

50

53

56

Measures 56-59 of the piece. Measure 56 features a treble clef with a single eighth note and a bass clef with a triplet of eighth notes. Measures 57-59 are marked with a repeat sign and contain complex chords and melodic lines in both staves, with some notes highlighted in purple and green.

60

Measures 60-63 of the piece. Measure 60 continues the melodic and harmonic development. Measures 61-63 show a progression of chords and melodic fragments, with some notes highlighted in purple and green.

64

Measures 64-67 of the piece. Measure 64 features a treble clef with a single eighth note and a bass clef with a triplet of eighth notes. Measures 65-67 are marked with a repeat sign and contain complex chords and melodic lines in both staves, with some notes highlighted in purple and green.