

# Sonata No. 25 3rd

Movement: Vivace Op. 79

L. V. Beethoven (1770–1827)

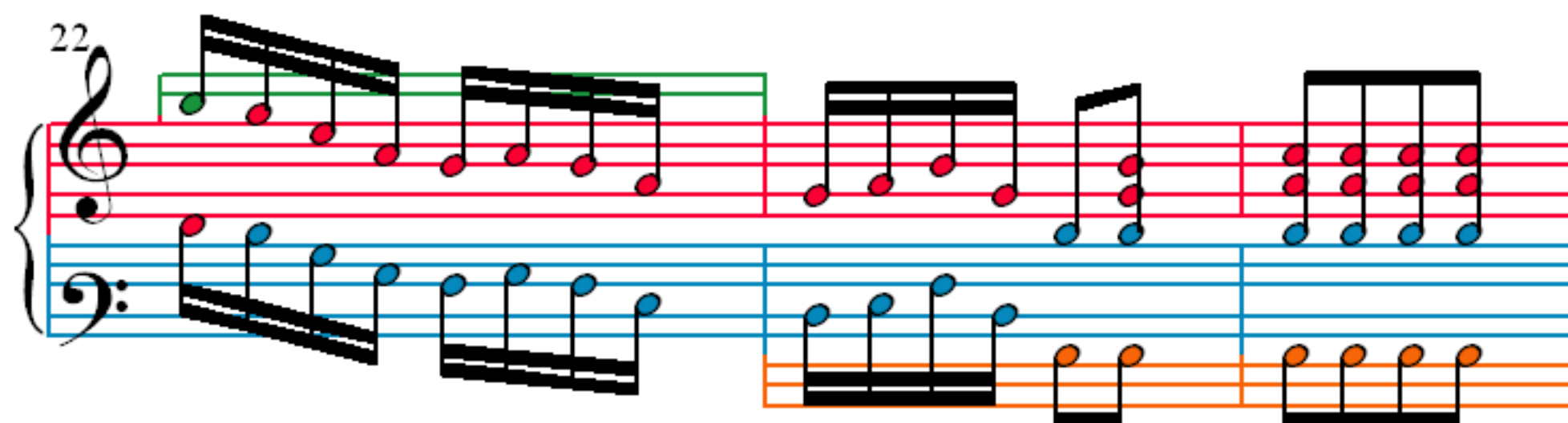
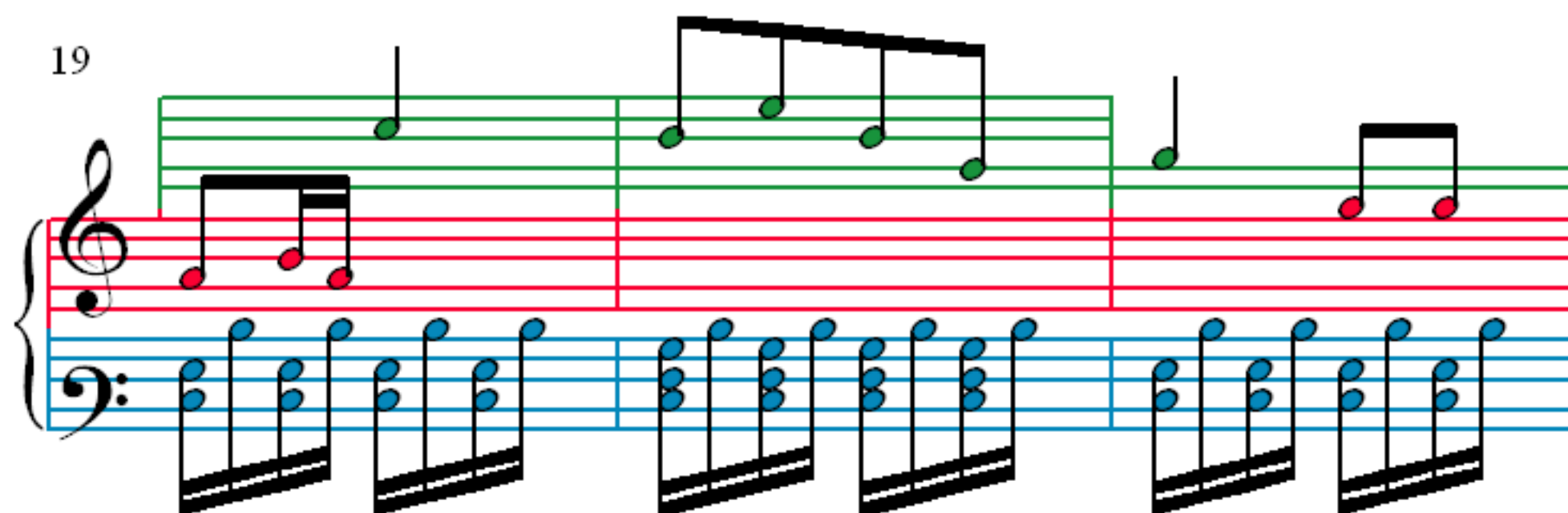
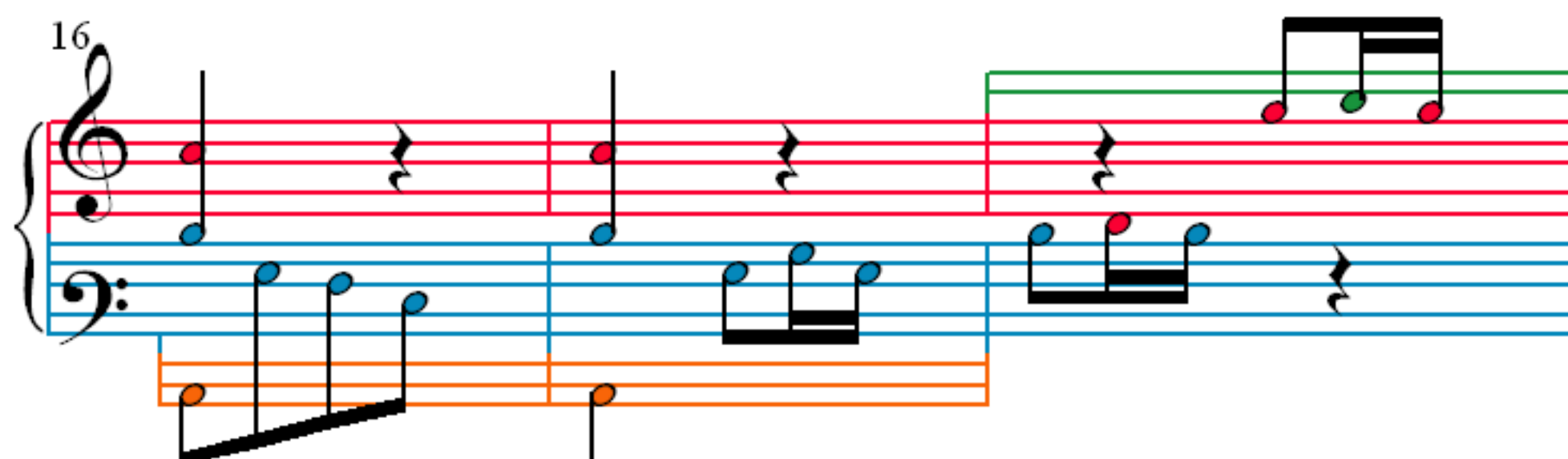
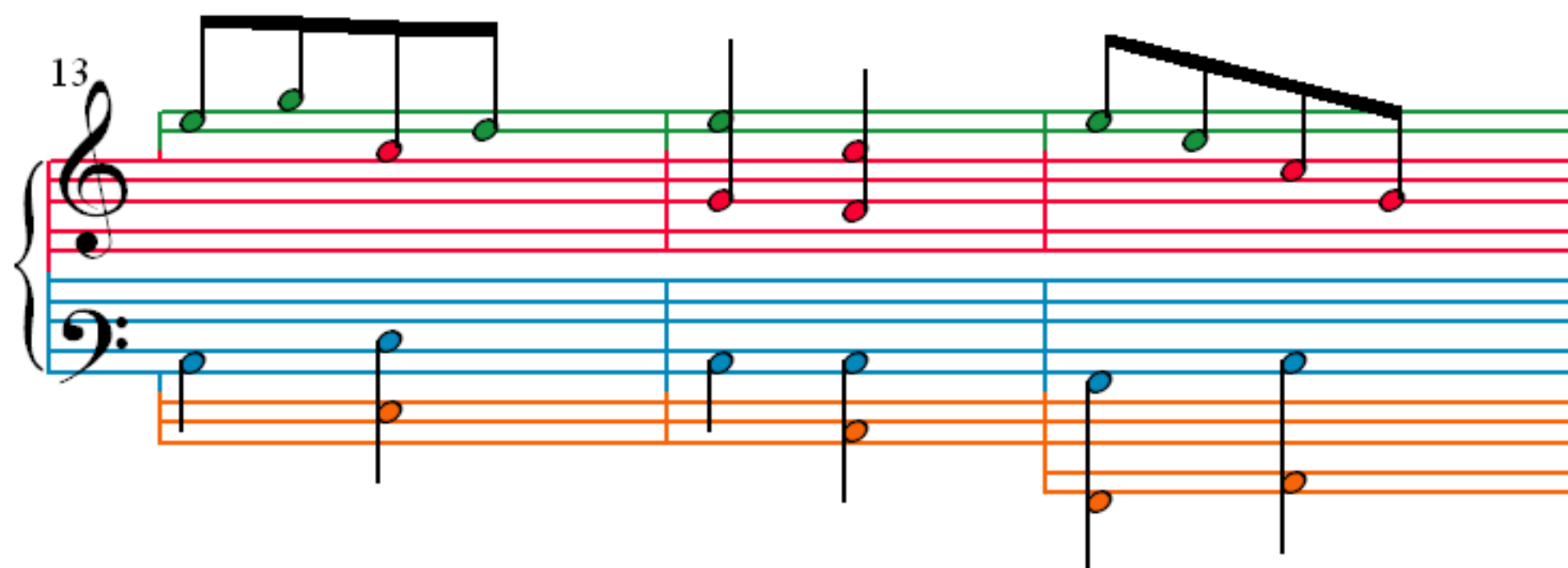
1

4

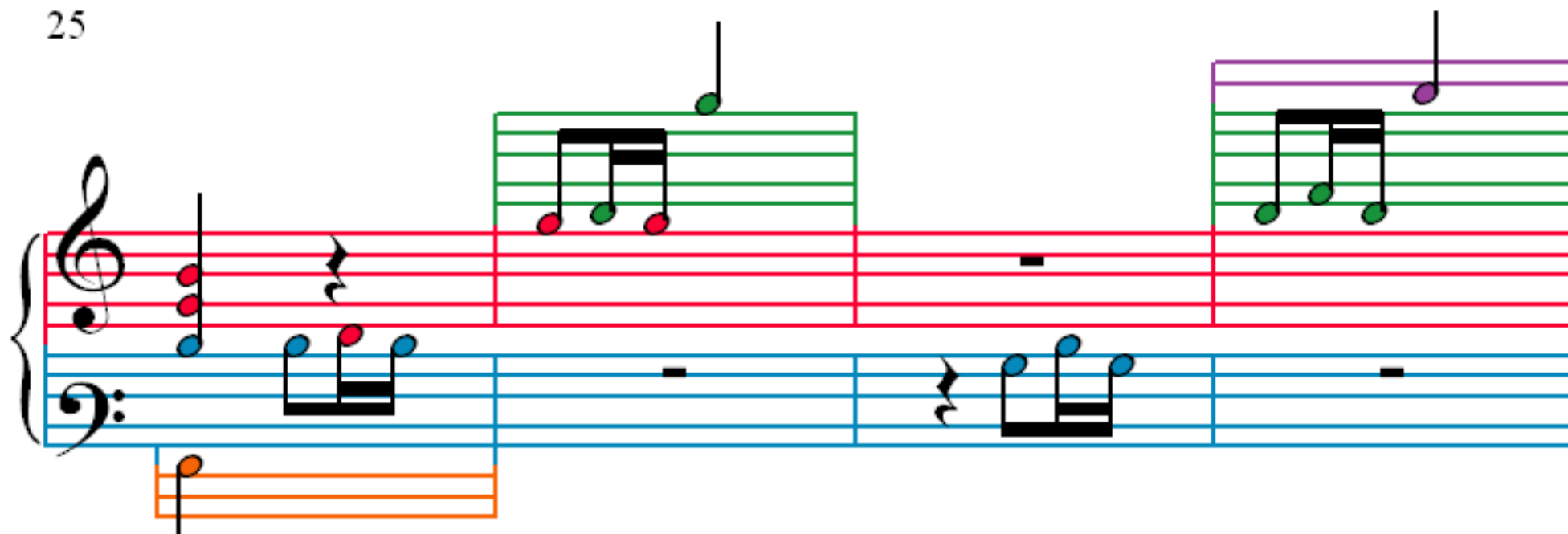
7

10

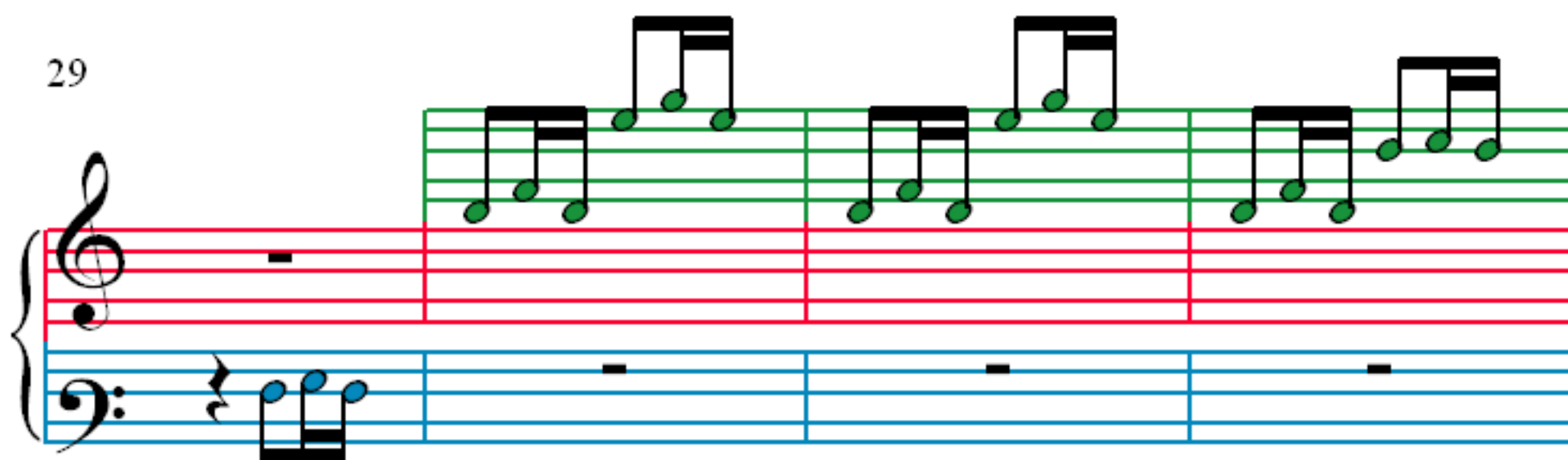
The image displays the first 12 measures of the third movement of Beethoven's Sonata No. 25, Op. 79. The notation is presented in a four-measure system. Each system consists of a grand staff with a treble and bass clef. The treble staff is highlighted with a red background, and the bass staff with a blue background. The key signature is one flat (B-flat major or D minor), and the time signature is 2/4. The notation includes various musical symbols such as eighth notes, sixteenth notes, and rests. The first measure is marked with a '1' and a diamond-shaped repeat sign. The fourth measure is marked with a '4'. The seventh measure is marked with a '7'. The tenth measure is marked with a '10'. The notation is color-coded: red for the treble staff, blue for the bass staff, and orange for the lower part of the bass staff. The notes are color-coded: red for the treble staff, blue for the bass staff, and orange for the lower part of the bass staff. The notes are also color-coded: red for the treble staff, blue for the bass staff, and orange for the lower part of the bass staff.



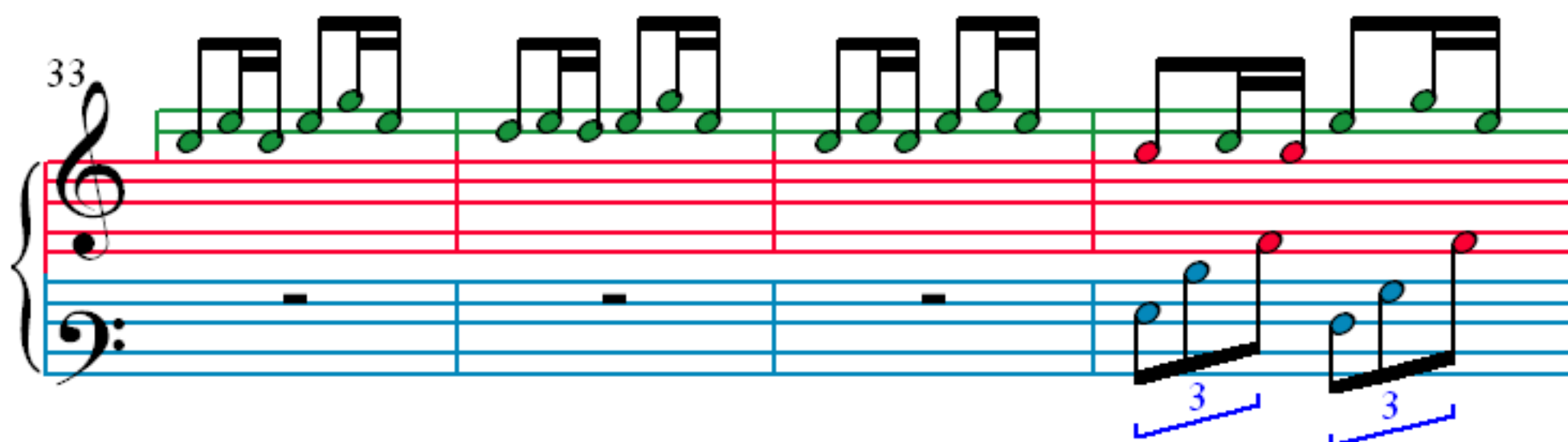
25



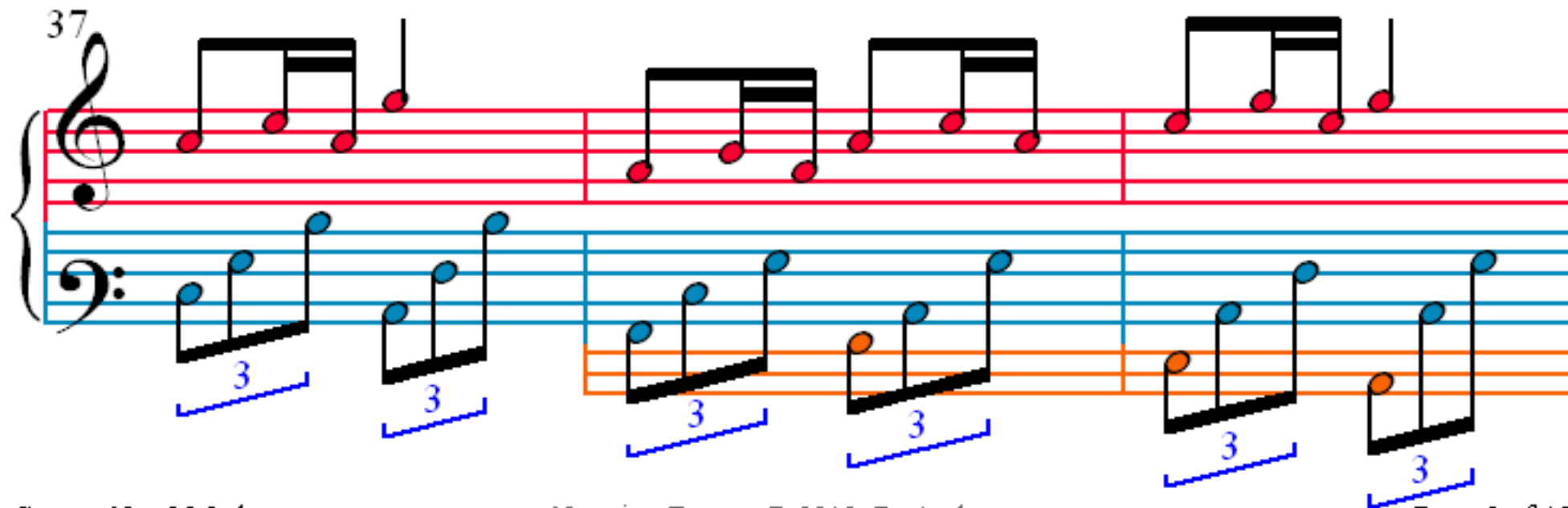
29



33



37



40

Measures 40-42. Treble clef: Green notes. Bass clef: Blue notes with triplets (3) marked with a blue bracket.

43

Measures 43-45. Treble clef: Red notes. Bass clef: Blue notes with triplets (3) and orange notes.

46

Measures 46-48. Treble clef: Red notes. Bass clef: Blue notes with triplets (3) and orange notes.

49

Measures 49-51. Treble clef: Green notes. Bass clef: Blue notes with triplets (3) and orange notes.

52

Measures 52-54 of a musical score. Measure 52 features a treble clef with a key signature change (two sharps) and a bass clef with a key signature change (two flats). Measure 53 continues the bass line. Measure 54 shows a treble clef with a key signature change (one sharp) and a bass clef with a key signature change (one flat). The notation includes various note values, rests, and dynamic markings.

55

Measures 55-57 of a musical score. Measure 55 features a treble clef with a key signature change (one sharp) and a bass clef with a key signature change (one flat). Measure 56 continues the bass line. Measure 57 shows a treble clef with a key signature change (one sharp) and a bass clef with a key signature change (one flat). The notation includes various note values, rests, and dynamic markings.

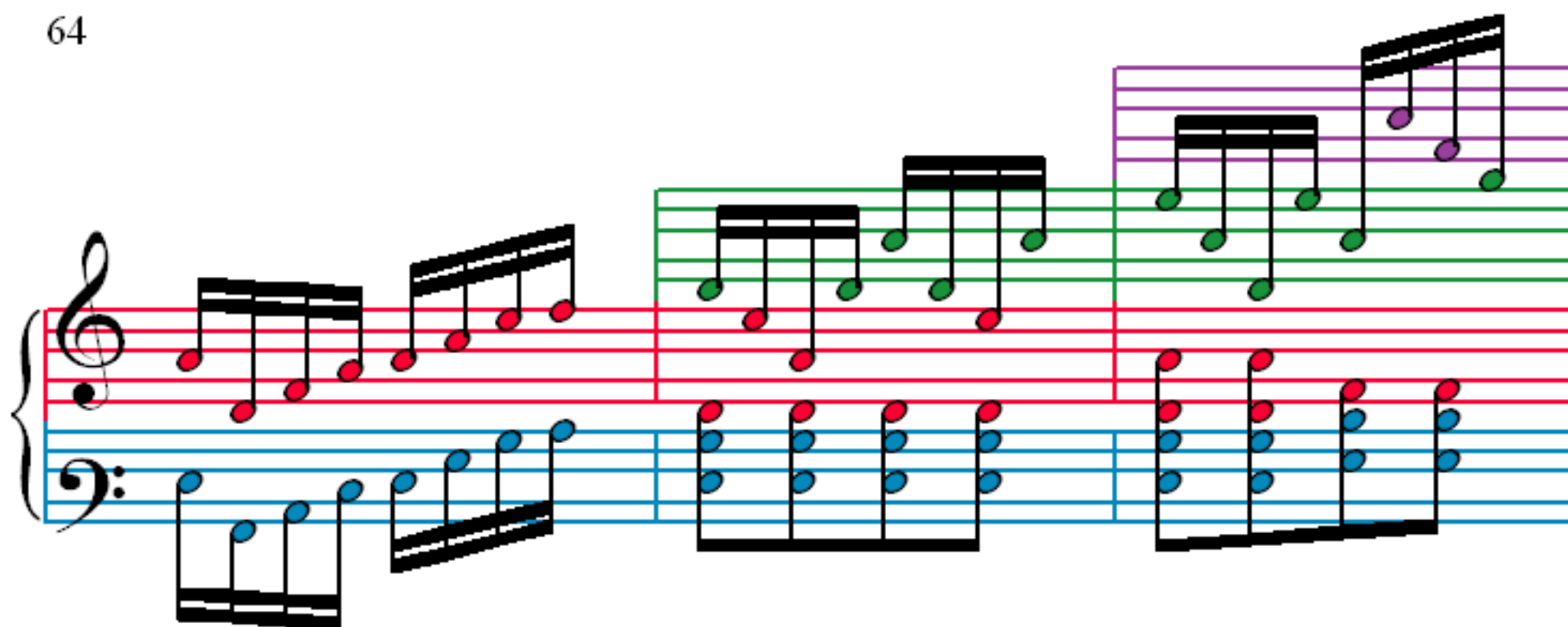
58

Measures 58-60 of a musical score. Measure 58 features a treble clef with a key signature change (one sharp) and a bass clef with a key signature change (one flat). Measure 59 continues the bass line. Measure 60 shows a treble clef with a key signature change (one sharp) and a bass clef with a key signature change (one flat). The notation includes various note values, rests, and dynamic markings.

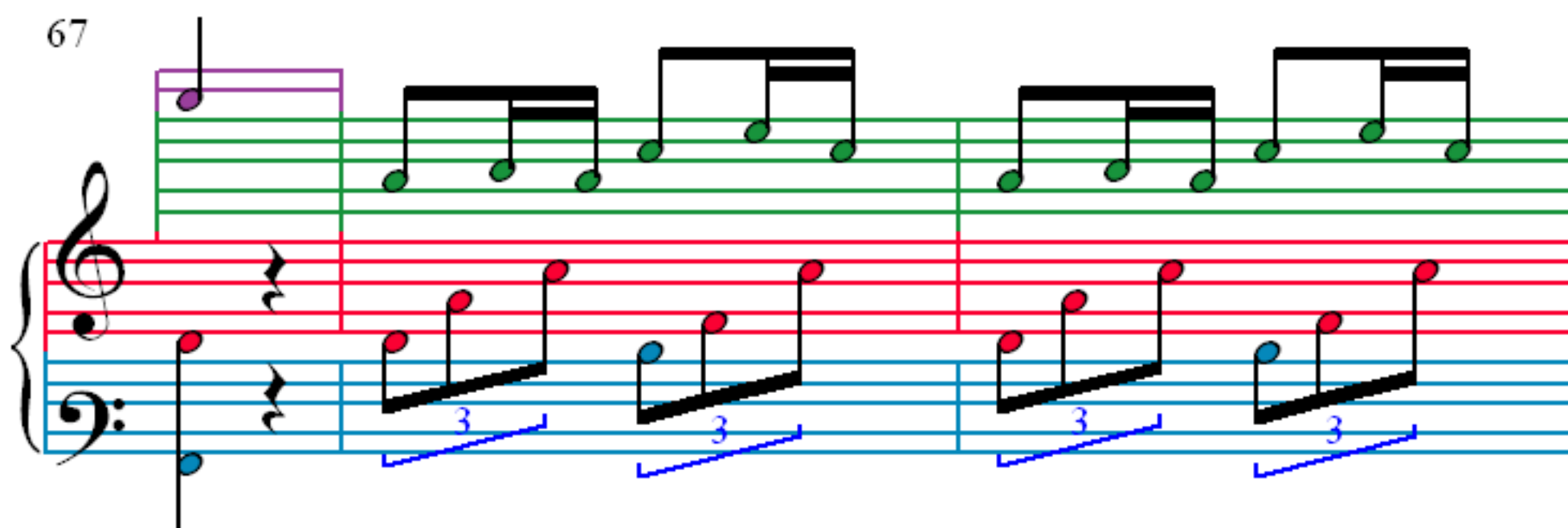
61

Measures 61-63 of a musical score. Measure 61 features a treble clef with a key signature change (one sharp) and a bass clef with a key signature change (one flat). Measure 62 continues the bass line. Measure 63 shows a treble clef with a key signature change (one sharp) and a bass clef with a key signature change (one flat). The notation includes various note values, rests, and dynamic markings.

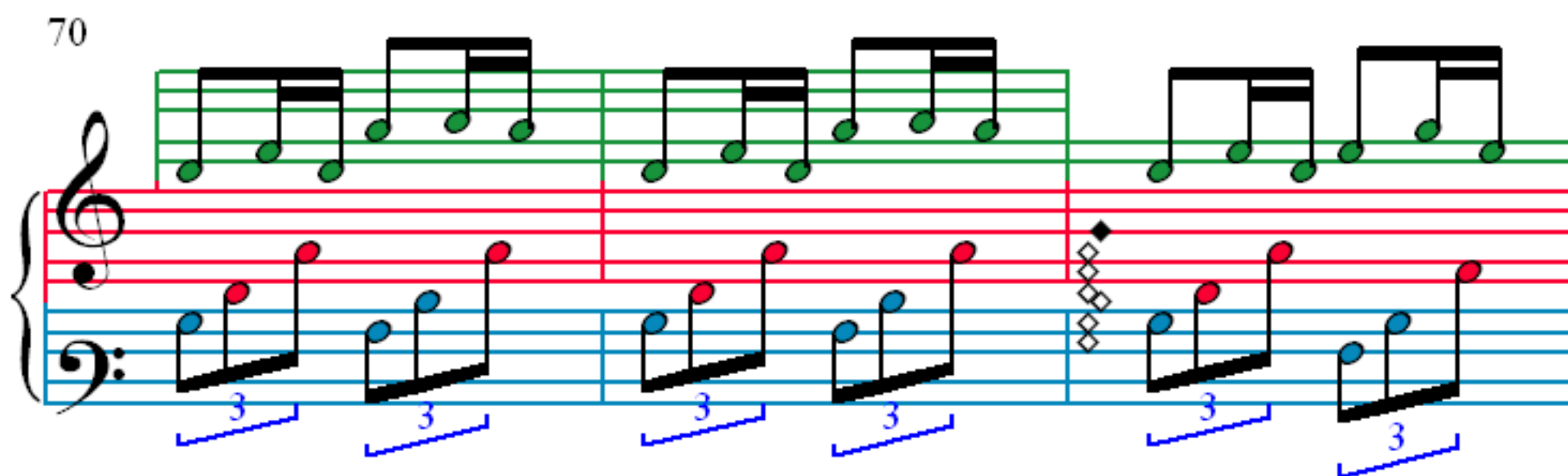
64



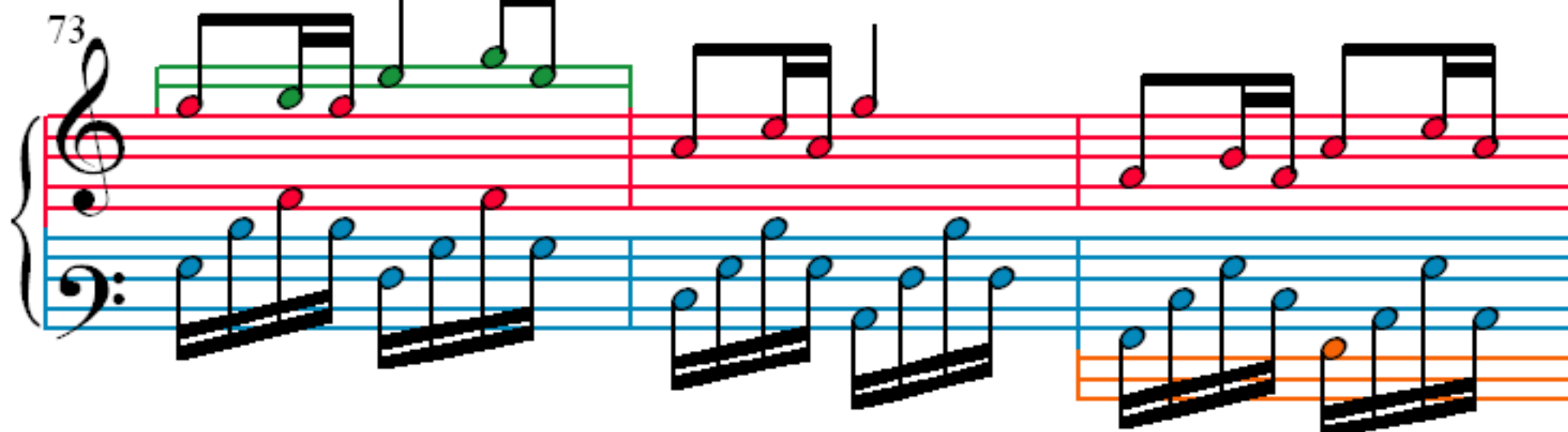
67



70



73



76

79

82

85



88

90

93

96

3

3

3

3

3

3



99

101

103

106

109

Measures 109 and 110 of the musical score. Measure 109 features a treble staff with a half note G4 and a half note A4, and a bass staff with a half note G3 and a half note A3. Measure 110 features a treble staff with a half note G4 and a half note A4, and a bass staff with a half note G3 and a half note A3. A blue bracket with the number 3 is positioned above the treble staff in measure 110, spanning the G4 and A4 notes.

111

Measures 111 and 112 of the musical score. Measure 111 features a treble staff with a half note G4 and a half note A4, and a bass staff with a half note G3 and a half note A3. Measure 112 features a treble staff with a half note G4 and a half note A4, and a bass staff with a half note G3 and a half note A3. Blue brackets with the number 3 are positioned above the treble staff in measures 111 and 112, spanning the G4 and A4 notes.

113

Measures 113, 114, and 115 of the musical score. Measure 113 features a treble staff with a half note G4 and a half note A4, and a bass staff with a half note G3 and a half note A3. Measure 114 features a treble staff with a half note G4 and a half note A4, and a bass staff with a half note G3 and a half note A3. Measure 115 features a treble staff with a half note G4 and a half note A4, and a bass staff with a half note G3 and a half note A3. Blue brackets with the number 3 are positioned above the treble staff in measures 113 and 114, spanning the G4 and A4 notes.

116

Measures 116 and 117 of the musical score. Measure 116 features a treble staff with a half note G4 and a half note A4, and a bass staff with a half note G3 and a half note A3. Measure 117 features a treble staff with a half note G4 and a half note A4, and a bass staff with a half note G3 and a half note A3. A blue bracket with the number 3 is positioned above the treble staff in measure 116, spanning the G4 and A4 notes.