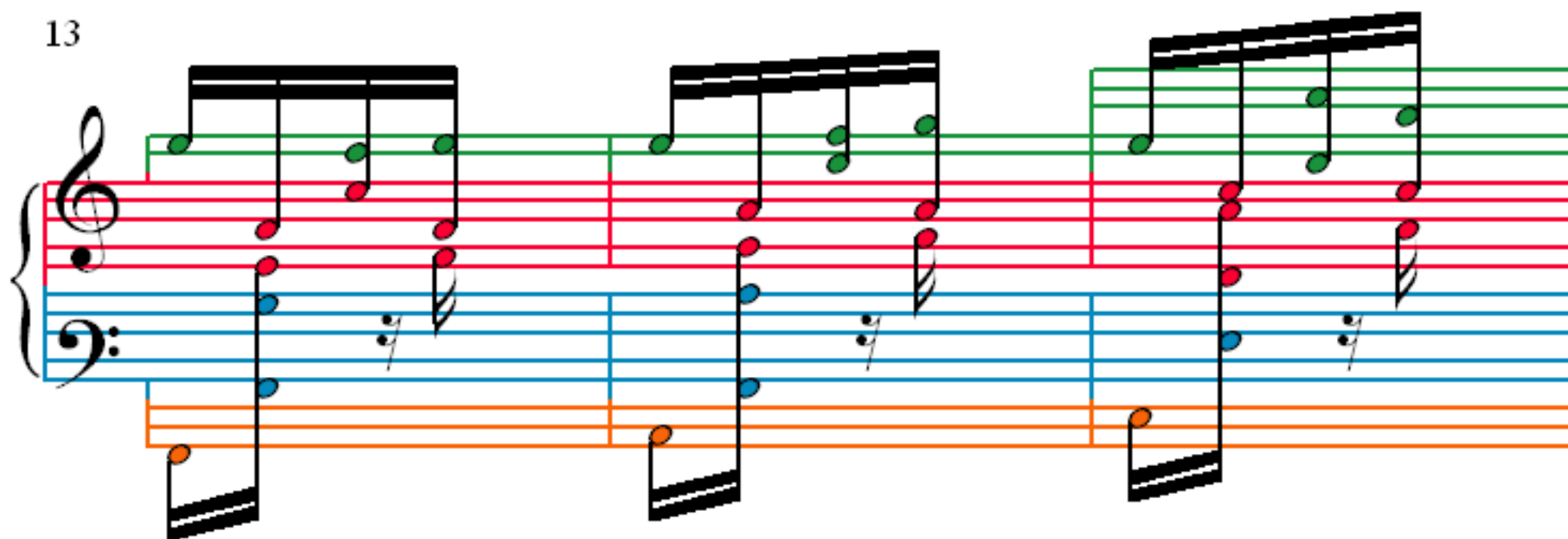


Prelude: Op. 28 No. 1

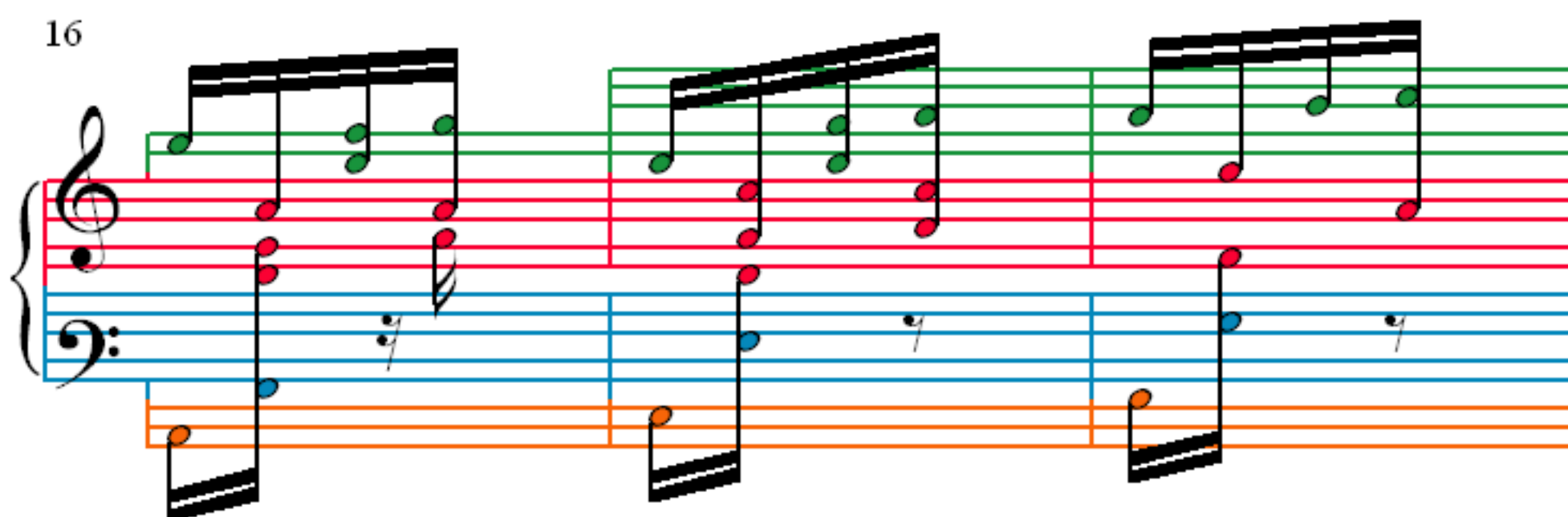
F. F. Chopin (1810–1849)

The image displays the first ten measures of Chopin's Prelude, Op. 28 No. 1. The score is written for piano and is in 2/8 time. It features a treble and bass staff joined by a brace, with an additional single staff below. The treble staff contains a continuous eighth-note melody, with notes colored green, red, and blue. The bass staff provides a harmonic accompaniment with chords and single notes, colored blue and pink. The single staff below contains a simple bass line with notes colored orange and pink. Measure numbers 1, 4, 7, and 10 are indicated at the start of their respective systems. The notation includes various musical symbols such as treble and bass clefs, a key signature of one flat (B-flat), and time signatures.

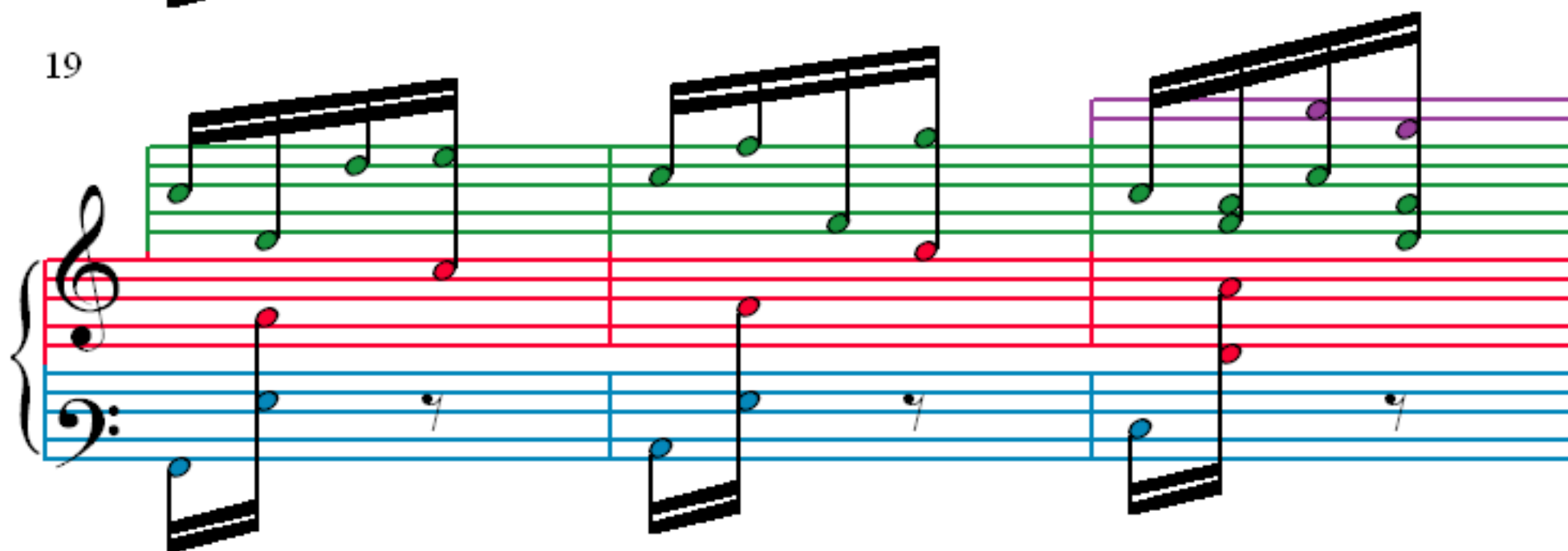
13



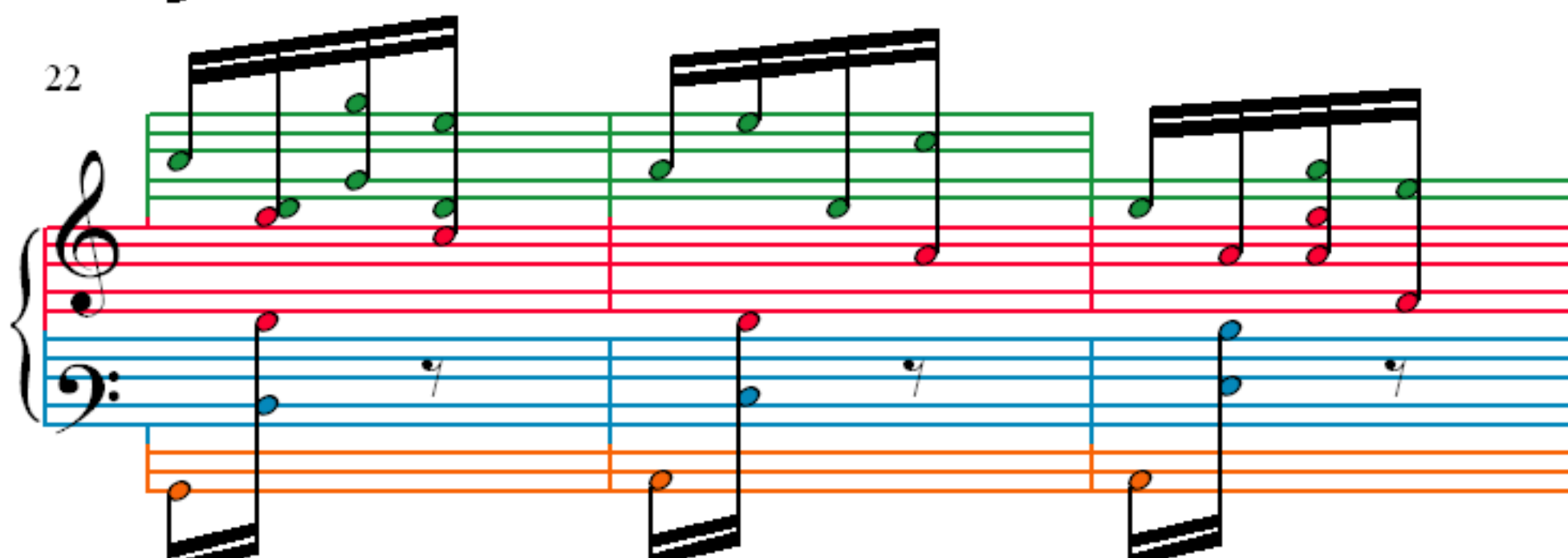
16



19



22



25

27

29

32