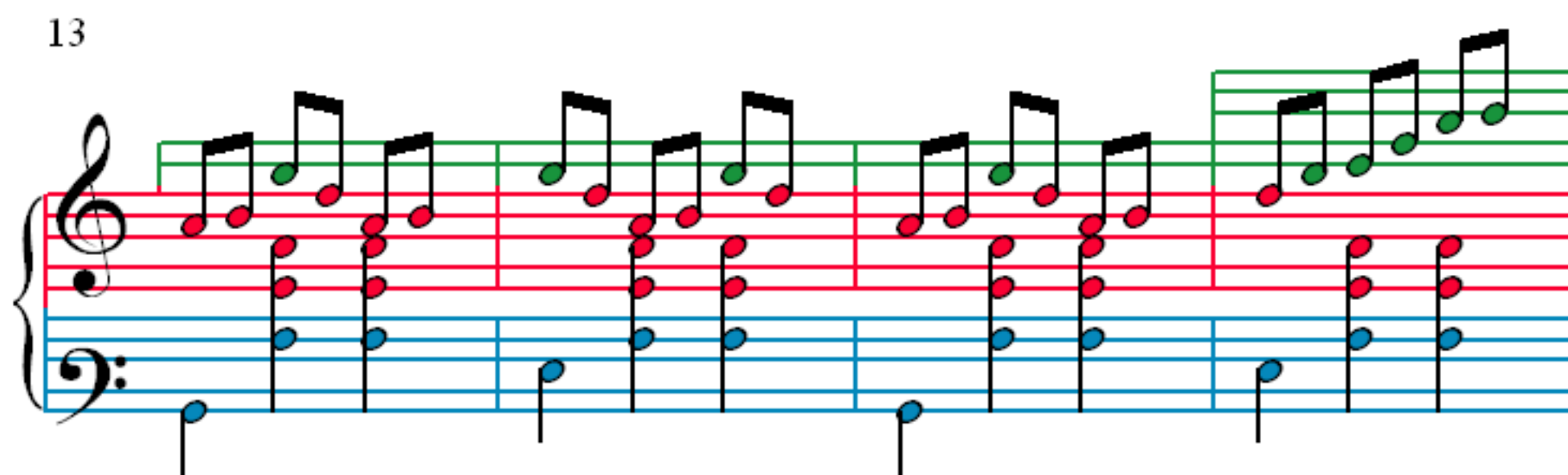
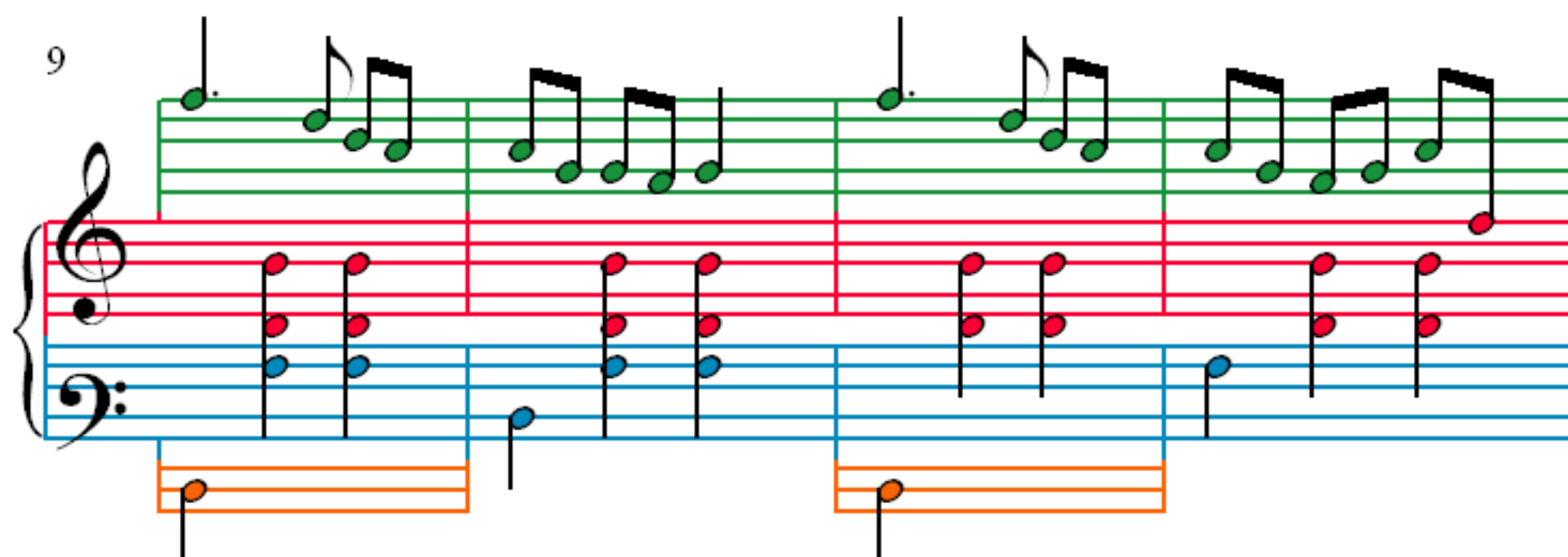
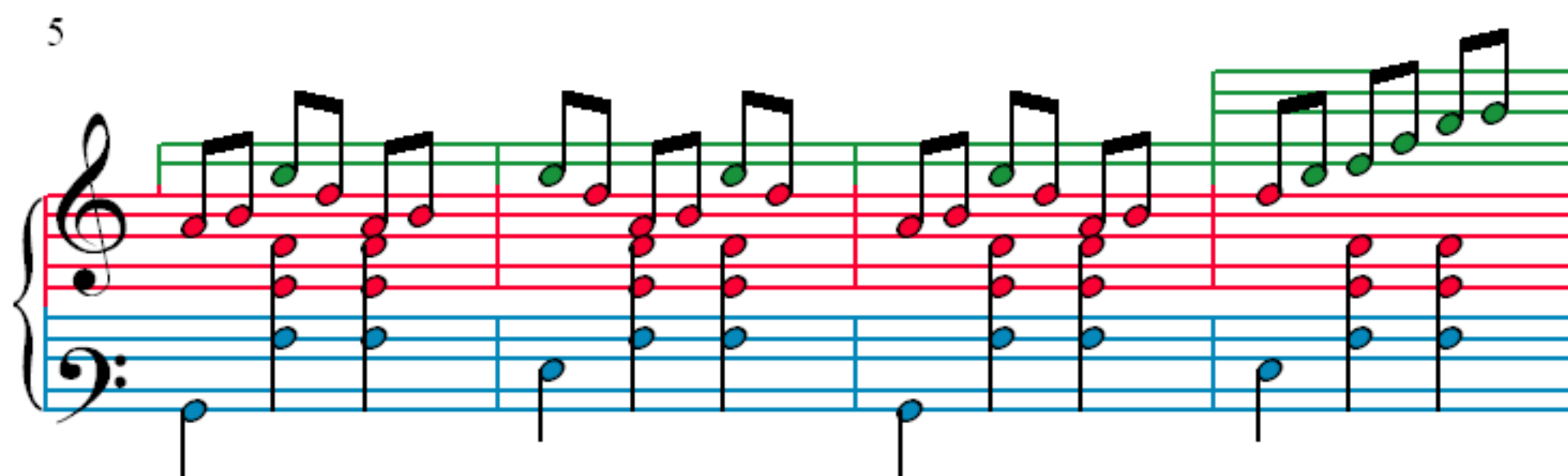


Valse Op. 64, No. 1 'Minute Waltz'

F. F. Chopin (1810–1849)



17

Measures 17-20 of the musical score. The treble clef staff features a melody of eighth and sixteenth notes, with some notes highlighted in green. The right hand of the piano accompaniment plays chords of two eighth notes, with notes colored red and blue. The left hand plays a simple bass line with notes colored blue and orange. Measure 19 includes a repeat sign.

21

Measures 21-24 of the musical score. The treble clef staff continues the melody, with some notes highlighted in green and purple. The right hand of the piano accompaniment plays chords of two eighth notes, with notes colored red and blue. The left hand plays a simple bass line with notes colored blue and orange. Measure 23 includes a repeat sign.

25

Measures 25-28 of the musical score. The treble clef staff features a melody of eighth and sixteenth notes, with some notes highlighted in green and purple. The right hand of the piano accompaniment plays chords of two eighth notes, with notes colored red and blue. The left hand plays a simple bass line with notes colored blue and orange. Measure 27 includes a repeat sign.

29

Measures 29-32 of the musical score. The treble clef staff continues the melody, with some notes highlighted in green and purple. The right hand of the piano accompaniment plays chords of two eighth notes, with notes colored red and blue. The left hand plays a simple bass line with notes colored blue and orange. Measure 31 includes a repeat sign.

34

Measures 34-37. Treble clef: Green line with eighth notes. Bass clef: Blue line with chords, orange line with a single note.

38

Measures 38-41. Treble clef: Purple line with eighth notes. Bass clef: Blue line with chords, orange line with a single note.

42

Measures 42-45. Treble clef: Green line with eighth notes. Bass clef: Blue line with chords, orange line with a single note.

46

Measures 46-49. Treble clef: Purple line with eighth notes. Bass clef: Blue line with chords, orange line with a single note.

51

56

61

66

72

Measures 72-76 of the musical score. The treble clef staff (green) contains a continuous eighth-note melody. The right hand of the piano (red) plays a steady accompaniment of eighth notes. The left hand (blue) plays a steady accompaniment of eighth notes. The bass clef staff (blue) contains a continuous eighth-note melody. The right hand of the piano (red) plays a steady accompaniment of eighth notes. The left hand (blue) plays a steady accompaniment of eighth notes. The bass clef staff (blue) contains a continuous eighth-note melody.

77

Measures 77-81 of the musical score. The treble clef staff (green) contains a continuous eighth-note melody. The right hand of the piano (red) plays a steady accompaniment of eighth notes. The left hand (blue) plays a steady accompaniment of eighth notes. The bass clef staff (blue) contains a continuous eighth-note melody. The right hand of the piano (red) plays a steady accompaniment of eighth notes. The left hand (blue) plays a steady accompaniment of eighth notes. The bass clef staff (blue) contains a continuous eighth-note melody.

82

Measures 82-87 of the musical score. The treble clef staff (green) contains a continuous eighth-note melody. The right hand of the piano (red) plays a steady accompaniment of eighth notes. The left hand (blue) plays a steady accompaniment of eighth notes. The bass clef staff (blue) contains a continuous eighth-note melody. The right hand of the piano (red) plays a steady accompaniment of eighth notes. The left hand (blue) plays a steady accompaniment of eighth notes. The bass clef staff (blue) contains a continuous eighth-note melody.

88

Measures 88-92 of the musical score. The treble clef staff (green) contains a continuous eighth-note melody. The right hand of the piano (red) plays a steady accompaniment of eighth notes. The left hand (blue) plays a steady accompaniment of eighth notes. The bass clef staff (blue) contains a continuous eighth-note melody. The right hand of the piano (red) plays a steady accompaniment of eighth notes. The left hand (blue) plays a steady accompaniment of eighth notes. The bass clef staff (blue) contains a continuous eighth-note melody.

Measures 93-96 of the musical score. The treble clef staff features a melody of eighth notes, with notes in measures 93-95 colored red and notes in measure 96 colored green. The bass clef staff provides a harmonic accompaniment with chords of red and blue notes. An orange box highlights a single note in the bass clef staff at the beginning of measure 93.

Measures 97-101 of the musical score. The treble clef staff continues the melody with eighth notes, colored red in measures 97-100 and green in measure 101. The bass clef staff accompaniment consists of red and blue chords. Two orange boxes highlight single notes in the bass clef staff at the beginning of measures 97 and 100.

Measures 102-105 of the musical score. The treble clef staff shows the melody with eighth notes, colored red in measures 102-104 and green in measure 105. The bass clef staff accompaniment is composed of red and blue chords. An orange box highlights a single note in the bass clef staff at the beginning of measure 105.

Measures 106-109 of the musical score. The treble clef staff continues the melody with eighth notes, colored red in measures 106-108 and green in measure 109. The bass clef staff accompaniment features red and blue chords. An orange box highlights a single note in the bass clef staff at the beginning of measure 106.

110

114

118

122

126

130

134

138