

Villanelle

P. Dukas (1865–1935)

1

4

7

11

The image displays the first eleven measures of the piano introduction to 'Villanelle' by P. Dukas. The score is written for piano in 6/8 time, featuring a treble and bass staff joined by a brace. The notation includes various musical symbols such as treble and bass clefs, a key signature of one flat (B-flat), a 6/8 time signature, and a variety of note values including eighth, quarter, and half notes. Some notes are color-coded: green for the first system, blue for the second, and orange for the third. There are also some purple notes in the first system. The score is divided into systems by vertical bar lines. The first system (measures 1-3) shows a treble staff with a whole rest in the first measure, followed by a half note and a quarter note. The second system (measures 4-6) features a more active melody in the treble staff. The third system (measures 7-9) continues the melody. The fourth system (measures 10-11) shows the final two measures of the excerpt. The notation is clear and legible, with a focus on the melodic line in the treble staff.

16

Measures 16-19. Treble and bass staves with red and blue notes. An orange staff is below the bass staff.

20

Measures 20-23. Treble and bass staves with red and blue notes. An orange staff is below the bass staff.

24

Measures 24-27. Treble and bass staves with red and blue notes. An orange staff is below the bass staff.

28

Measures 28-31. Treble and bass staves with red and blue notes. An orange staff is below the bass staff. A green staff is above the treble staff starting at measure 29.

32

Measures 32-34 of a musical score. Measure 32 features a treble staff with a purple and green chordal pattern and a bass staff with a blue and orange chordal pattern. Measure 33 shows a continuation of the bass staff pattern with a blue and orange chordal pattern. Measure 34 features a treble staff with a purple and green chordal pattern and a bass staff with a blue and orange chordal pattern.

35

Measures 35-37 of a musical score. Measure 35 features a treble staff with a green and red chordal pattern and a bass staff with a blue and orange chordal pattern. Measure 36 shows a continuation of the treble staff pattern with a green and red chordal pattern. Measure 37 features a treble staff with a green and red chordal pattern and a bass staff with a blue and orange chordal pattern.

38

Measures 38-41 of a musical score. Measure 38 features a treble staff with a 4/4 time signature and a bass staff with a blue and orange chordal pattern. Measure 39 shows a continuation of the treble staff pattern with a 4/4 time signature. Measure 40 features a treble staff with a 4/4 time signature and a bass staff with a blue and orange chordal pattern. Measure 41 shows a continuation of the treble staff pattern with a 4/4 time signature.

42

Measures 42-44 of a musical score. Measure 42 features a treble staff with a blue and orange chordal pattern and a bass staff with a blue and orange chordal pattern. Measure 43 shows a continuation of the treble staff pattern with a blue and orange chordal pattern. Measure 44 features a treble staff with a blue and orange chordal pattern and a bass staff with a blue and orange chordal pattern.

45

Measures 45-47. Treble and bass staves with red and blue notes. An orange staff with pink notes is below the bass staff.

48

Measures 48-50. Treble and bass staves with red and blue notes. An orange staff with a single note is below the bass staff.

51

Measures 51-53. Treble and bass staves with red and blue notes. An orange staff with a single note is below the bass staff.

54

Measures 54-56. Treble and bass staves with red and blue notes. An orange staff with a single note is below the bass staff.

57

Measures 57-60. Treble clef: Red notes, mostly eighth and sixteenth notes. Bass clef: Blue notes, mostly eighth notes. An orange staff is positioned below the bass staff, containing a few notes.

61

Measures 61-63. Treble clef: Purple notes, mostly eighth notes. Bass clef: Blue notes, mostly eighth notes. An orange staff is positioned below the bass staff, containing a few notes.

64

Measures 64-66. Treble clef: Green notes, mostly eighth notes. Bass clef: Blue notes, mostly eighth notes. An orange staff is positioned below the bass staff, containing a few notes.

67

Measures 67-70. Treble clef: Green notes, mostly eighth notes. Bass clef: Blue notes, mostly eighth notes. An orange staff is positioned below the bass staff, containing a few notes.

71

74

78

82

86

90

94

97

100

103

106

110

113

Measures 113-116 of a musical score. The system consists of three staves: a grand staff (treble and bass clefs) and a single staff below. The grand staff has a red line and a blue line. The single staff has an orange line. The music is written in treble and bass clefs. The notes are colored: red, blue, and orange. The notes are grouped by measure lines. The notes are connected by stems. The notes are placed on the lines of the staves.

117

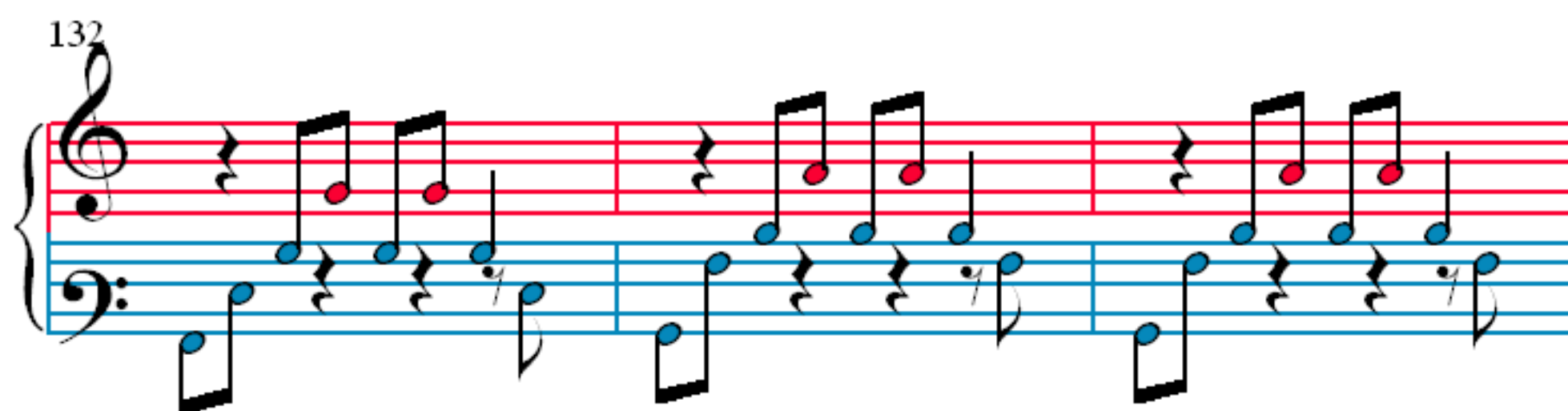
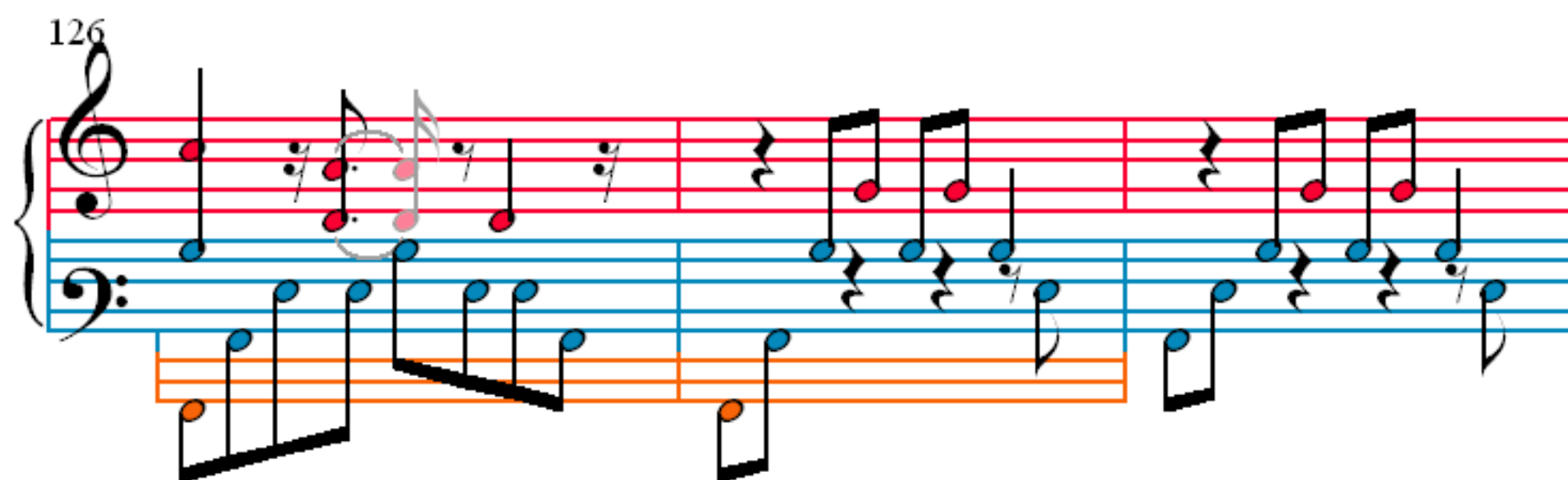
Measures 117-119 of a musical score. The system consists of three staves: a grand staff (treble and bass clefs) and a single staff below. The grand staff has a red line and a blue line. The single staff has an orange line. The music is written in treble and bass clefs. The notes are colored: red, blue, and orange. The notes are grouped by measure lines. The notes are connected by stems. The notes are placed on the lines of the staves.

120

Measures 120-122 of a musical score. The system consists of three staves: a grand staff (treble and bass clefs) and a single staff below. The grand staff has a red line and a blue line. The single staff has an orange line. The music is written in treble and bass clefs. The notes are colored: red, blue, and orange. The notes are grouped by measure lines. The notes are connected by stems. The notes are placed on the lines of the staves.

123

Measures 123-125 of a musical score. The system consists of three staves: a grand staff (treble and bass clefs) and a single staff below. The grand staff has a red line and a blue line. The single staff has an orange line. The music is written in treble and bass clefs. The notes are colored: red, blue, and orange. The notes are grouped by measure lines. The notes are connected by stems. The notes are placed on the lines of the staves.



138

141

144

147

150

Measures 150-152 of a musical score. The system consists of a grand staff with a treble clef and a bass clef. The treble staff has a green staff line above it. The bass staff has a blue staff line above it. The treble staff contains a melody of eighth notes, with some notes highlighted in green and others in red. The bass staff contains a melody of eighth notes, with some notes highlighted in blue and others in red. The notes are grouped in pairs, suggesting a 16th-note rhythm.

153

Measures 153-156 of a musical score. The system consists of a grand staff with a treble clef and a bass clef. The treble staff has a red staff line above it. The bass staff has a blue staff line above it. The treble staff contains a melody of eighth notes, with some notes highlighted in red and others in blue. The bass staff contains a melody of eighth notes, with some notes highlighted in blue and others in red. The notes are grouped in pairs, suggesting a 16th-note rhythm.

157

Measures 157-160 of a musical score. The system consists of a grand staff with a treble clef and a bass clef. The treble staff has a green staff line above it. The bass staff has a blue staff line above it. The treble staff contains a melody of eighth notes, with some notes highlighted in green and others in red. The bass staff contains a melody of eighth notes, with some notes highlighted in blue and others in red. The notes are grouped in pairs, suggesting a 16th-note rhythm.

161

Measures 161-164 of a musical score. The system consists of a grand staff with a treble clef and a bass clef. The treble staff has a red staff line above it. The bass staff has a blue staff line above it. The treble staff contains a melody of eighth notes, with some notes highlighted in red and others in blue. The bass staff contains a melody of eighth notes, with some notes highlighted in blue and others in red. The notes are grouped in pairs, suggesting a 16th-note rhythm.

165

Measures 165-168. Treble clef: Red eighth notes. Bass clef: Blue eighth notes and whole notes.

169

Measures 169-172. Treble clef: Red eighth notes. Bass clef: Blue eighth notes and whole notes.

173

Measures 173-176. Treble clef: Red eighth notes and green sixteenth notes. Bass clef: Blue eighth notes and whole notes.

177

Measures 177-180. Treble clef: Green and purple sixteenth notes. Bass clef: Blue eighth notes and whole notes.

181

185

189

193

197

Measures 197-200. Treble clef, key signature of one flat. Measure 197: Treble has a half note G4, quarter note A4, quarter note Bb4, quarter note C5. Bass has a half note G3, quarter note A3, quarter note Bb3, quarter note C4. Measure 198: Treble has a half note G4, quarter note A4, quarter note Bb4, quarter note C5. Bass has a half note G3, quarter note A3, quarter note Bb3, quarter note C4. Measure 199: Treble has a half note G4, quarter note A4, quarter note Bb4, quarter note C5. Bass has a half note G3, quarter note A3, quarter note Bb3, quarter note C4. Measure 200: Treble has a half note G4, quarter note A4, quarter note Bb4, quarter note C5. Bass has a half note G3, quarter note A3, quarter note Bb3, quarter note C4. A purple box highlights the treble staff in measures 199 and 200. An orange box highlights the bass staff in measures 199 and 200.

201

Measures 201-204. Treble clef, key signature of one flat. Measure 201: Treble has a half note G4, quarter note A4, quarter note Bb4, quarter note C5. Bass has a half note G3, quarter note A3, quarter note Bb3, quarter note C4. Measure 202: Treble has a half note G4, quarter note A4, quarter note Bb4, quarter note C5. Bass has a half note G3, quarter note A3, quarter note Bb3, quarter note C4. Measure 203: Treble has a half note G4, quarter note A4, quarter note Bb4, quarter note C5. Bass has a half note G3, quarter note A3, quarter note Bb3, quarter note C4. Measure 204: Treble has a half note G4, quarter note A4, quarter note Bb4, quarter note C5. Bass has a half note G3, quarter note A3, quarter note Bb3, quarter note C4. A green box highlights the treble staff in measures 201 and 202. An orange box highlights the bass staff in measures 203 and 204.

205

Measures 205-208. Treble clef, key signature of one flat. Measure 205: Treble has a half note G4, quarter note A4, quarter note Bb4, quarter note C5. Bass has a half note G3, quarter note A3, quarter note Bb3, quarter note C4. Measure 206: Treble has a half note G4, quarter note A4, quarter note Bb4, quarter note C5. Bass has a half note G3, quarter note A3, quarter note Bb3, quarter note C4. Measure 207: Treble has a half note G4, quarter note A4, quarter note Bb4, quarter note C5. Bass has a half note G3, quarter note A3, quarter note Bb3, quarter note C4. Measure 208: Treble has a half note G4, quarter note A4, quarter note Bb4, quarter note C5. Bass has a half note G3, quarter note A3, quarter note Bb3, quarter note C4. A green box highlights the treble staff in measures 205 and 206. A pink box highlights the bass staff in measures 207 and 208.

209

Measures 209-212. Treble clef, key signature of one flat. Measure 209: Treble has a half note G4, quarter note A4, quarter note Bb4, quarter note C5. Bass has a half note G3, quarter note A3, quarter note Bb3, quarter note C4. Measure 210: Treble has a half note G4, quarter note A4, quarter note Bb4, quarter note C5. Bass has a half note G3, quarter note A3, quarter note Bb3, quarter note C4. Measure 211: Treble has a half note G4, quarter note A4, quarter note Bb4, quarter note C5. Bass has a half note G3, quarter note A3, quarter note Bb3, quarter note C4. Measure 212: Treble has a half note G4, quarter note A4, quarter note Bb4, quarter note C5. Bass has a half note G3, quarter note A3, quarter note Bb3, quarter note C4. A green box highlights the treble staff in measures 209 and 210. A pink box highlights the bass staff in measures 211 and 212.

215

219

223

227

Measures 231-235. Treble clef: Measure 231 has a whole rest. Measure 232 has a half note G4. Measure 233 has a half note A4. Measure 234 has a half note B4. Measure 235 has a half note C5. Bass clef: Measure 231 has a whole rest. Measure 232 has a whole rest. Measure 233 has a whole rest. Measure 234 has a whole rest. Measure 235 has a whole rest.

Measures 236-238. Treble clef: Measure 236 has a half note G4. Measure 237 has a half note A4. Measure 238 has a half note B4. Bass clef: Measure 236 has a whole rest. Measure 237 has a whole rest. Measure 238 has a whole rest.

Measures 239-243. Treble clef: Measure 239 has a whole rest. Measure 240 has a whole rest. Measure 241 has a whole rest. Measure 242 has a whole rest. Measure 243 has a whole rest. Bass clef: Measure 239 has a whole rest. Measure 240 has a whole rest. Measure 241 has a whole rest. Measure 242 has a whole rest. Measure 243 has a whole rest.

Measures 244-247. Treble clef: Measure 244 has a half note G4. Measure 245 has a half note A4. Measure 246 has a half note B4. Measure 247 has a half note C5. Bass clef: Measure 244 has a whole rest. Measure 245 has a whole rest. Measure 246 has a whole rest. Measure 247 has a whole rest.

248

Measures 248-251. Treble and bass staves with red and blue notes. An orange staff is introduced below the bass staff in measures 249-251.

252

Measures 252-257. Treble and bass staves with red and blue notes. An orange staff is introduced below the bass staff in measures 253-257.

258

Measures 258-261. Treble and bass staves with red and blue notes. An orange staff is introduced below the bass staff in measures 259-261.

262

Measures 262-265. Treble and bass staves with red and blue notes. An orange staff is introduced below the bass staff in measures 263-265.

266

Measures 266-270. The system features a grand staff with treble and bass clefs. The treble staff has a red line and a green line. The bass staff has a blue line and a red line. The music is in 2/2 time. Measures 266-268 show a melody in the treble staff with green notes and a bass line with red notes. Measure 269 has a 2/2 time signature change. Measure 270 has a yellow box around the treble staff.

270

Measures 271-275. The system features a grand staff with treble and bass clefs. The treble staff has a red line and a green line. The bass staff has a blue line and a red line. The music is in 2/2 time. Measures 271-273 show a melody in the treble staff with green notes and a bass line with red notes. Measure 274 has a yellow box around the treble staff. Measure 275 has a yellow box around the treble staff.

275

Measures 276-280. The system features a grand staff with treble and bass clefs. The treble staff has a red line and a green line. The bass staff has a blue line and a red line. The music is in 2/2 time. Measures 276-280 show a melody in the treble staff with green notes and a bass line with red notes. Measures 276-280 have a yellow box around the treble staff.

281

Measures 281-285. The system features a grand staff with treble and bass clefs. The treble staff has a red line and a green line. The bass staff has a blue line and a red line. The music is in 2/2 time. Measures 281-285 show a melody in the treble staff with green notes and a bass line with red notes. Measures 281-285 have a yellow box around the treble staff.

286

286

290

A musical score for the song "The Rose Tree". The score is written for a piano and voice. The piano part is in 2/4 time and consists of a melody in the right hand and a bass line in the left hand. The melody is written on a five-line staff with a treble clef, and the bass line is written on a five-line staff with a bass clef. The key signature is one flat (B-flat). The score is divided into measures by vertical bar lines. The first measure of the piano part is marked with a measure rest. The voice part is written on a five-line staff with a soprano clef. The lyrics are written below the voice staff. The score is numbered 290 at the beginning and 294 at the end.

294

298

[illegible]