

# Les Djinns

G. Fauré (1845–1924)

1

Measures 1-5 of the piece. The music is in 4/4 time with a key signature of two flats (B-flat and E-flat). The right hand (treble clef) has a green bracket over measures 1-2, indicating a first ending. The left hand (bass clef) has a blue bracket over measures 1-2, indicating a second ending. The notes are colored red and blue.

6

Measures 6-10 of the piece. The right hand (treble clef) has a blue bracket over measures 6-7, indicating a first ending. The left hand (bass clef) has a blue bracket over measures 6-7, indicating a second ending. The notes are colored red and blue.

10

Measures 11-13 of the piece. The right hand (treble clef) has a green bracket over measures 11-12, indicating a first ending. The left hand (bass clef) has a blue bracket over measures 11-12, indicating a second ending. The notes are colored red and blue.

14

Measures 14-18 of the piece. The right hand (treble clef) has a green bracket over measures 14-15, indicating a first ending. The left hand (bass clef) has a blue bracket over measures 14-15, indicating a second ending. The notes are colored red and blue.

18

21

24

27

29

Measures 29-31: Treble staff (green background), Bass staff, and Orange staff.

32

Measures 32-34: Treble staff (green background), Bass staff, and Orange staff.

35

Measures 35-37: Treble staff (green background), Bass staff, and Orange staff.

38

Measures 38 and 39 of a musical score. The score is written for a grand staff (treble and bass clefs) with a red line for the right hand and a blue line for the left hand. The right hand plays a series of chords, each consisting of a purple note, a green note, and a red note. The left hand plays a series of chords, each consisting of a blue note, an orange note, and a pink note. The notes are connected by stems, and the chords are grouped by a brace. The background is divided into two systems by a vertical line.

40

Measures 40 and 41 of a musical score. The score is written for a grand staff (treble and bass clefs) with a red line for the right hand and a blue line for the left hand. The right hand plays a series of chords, each consisting of a purple note, a green note, and a red note. The left hand plays a series of chords, each consisting of a blue note, an orange note, and a pink note. The notes are connected by stems, and the chords are grouped by a brace. The background is divided into two systems by a vertical line.

42

Measures 42 and 43 of a musical score. The score is written for a grand staff (treble and bass clefs) with a red line for the right hand and a blue line for the left hand. The right hand plays a series of chords, each consisting of a purple note, a green note, and a red note. The left hand plays a series of chords, each consisting of a blue note, an orange note, and a pink note. The notes are connected by stems, and the chords are grouped by a brace. The background is divided into two systems by a vertical line.

44

46

48



50

Measure 50: Treble staff has three groups of green triplets. Bass staff has three groups of blue triplets. A third staff below the bass staff has orange notes.

Measure 51: Treble staff has three groups of green triplets. Bass staff has three groups of blue triplets. A third staff below the bass staff has orange notes.

52

Measure 52: Treble staff has three groups of green triplets. Bass staff has three groups of blue triplets. A third staff below the bass staff has orange notes.

Measure 53: Treble staff has three groups of green triplets. Bass staff has three groups of blue triplets. A third staff below the bass staff has orange notes.

54

Measure 54: Treble staff has three groups of green triplets. Bass staff has three groups of blue triplets. A third staff below the bass staff has orange notes.

Measure 55: Treble staff has three groups of green triplets. Bass staff has three groups of blue triplets. A third staff below the bass staff has orange notes.

56

58

60

62

63

64

65

66

67

68

69

70

71

72



73

Measures 73-75: The right hand plays a sequence of triplets (three eighth notes beamed together) on a red staff. The left hand plays single notes on a blue staff. A green bracket highlights the first two notes of measure 73.

76

Measures 76-78: The right hand continues with triplets. The left hand plays single notes. A green bracket highlights the first two notes of measure 78.

79

Measures 79-81: The right hand continues with triplets. The left hand plays single notes. A green bracket highlights the first two notes of measure 81.

82

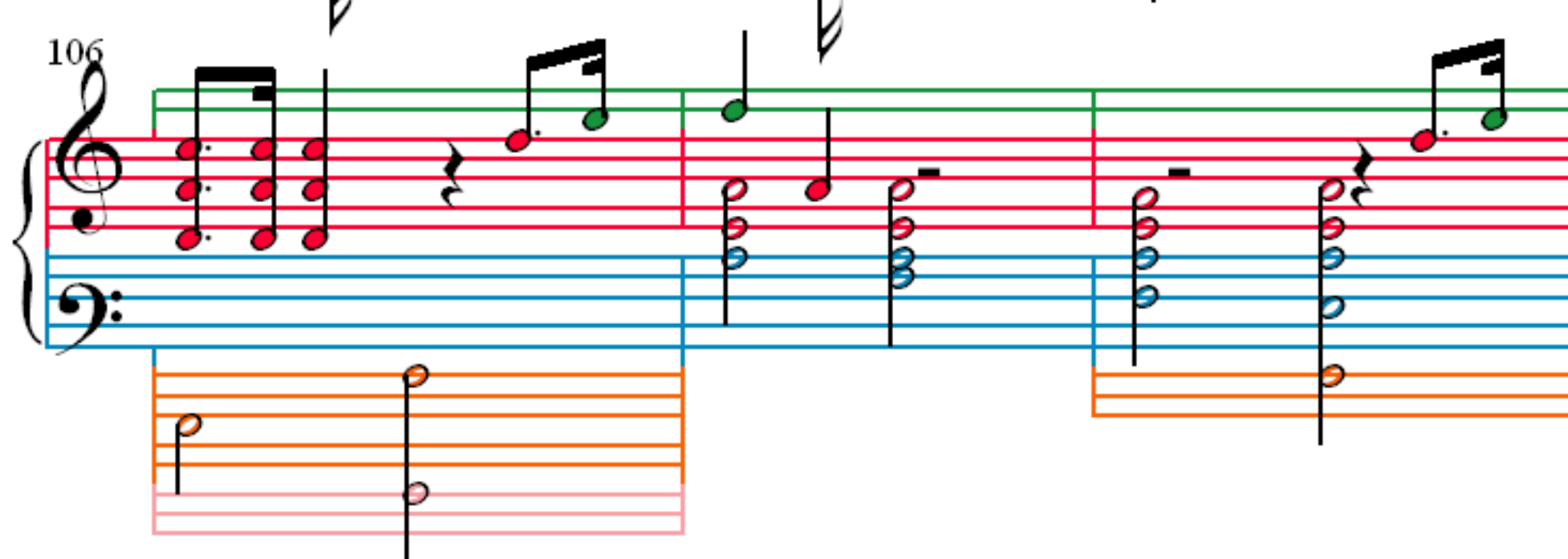
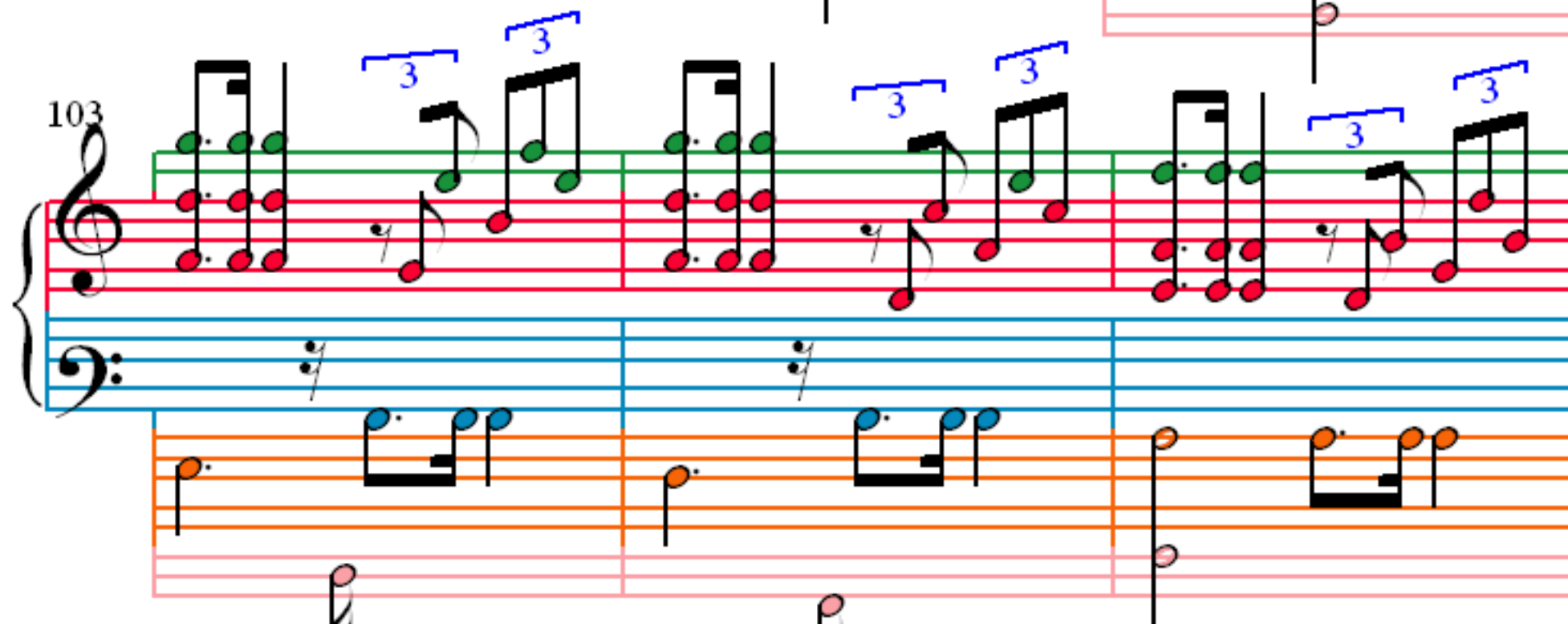
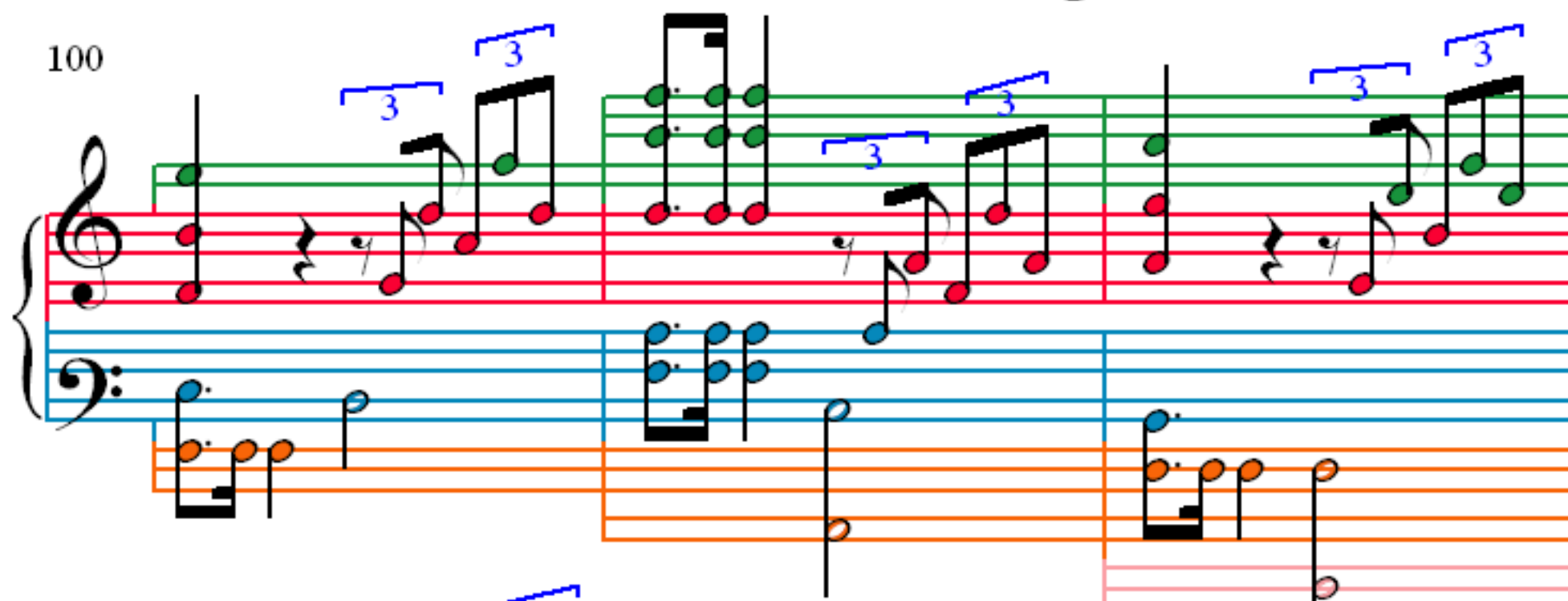
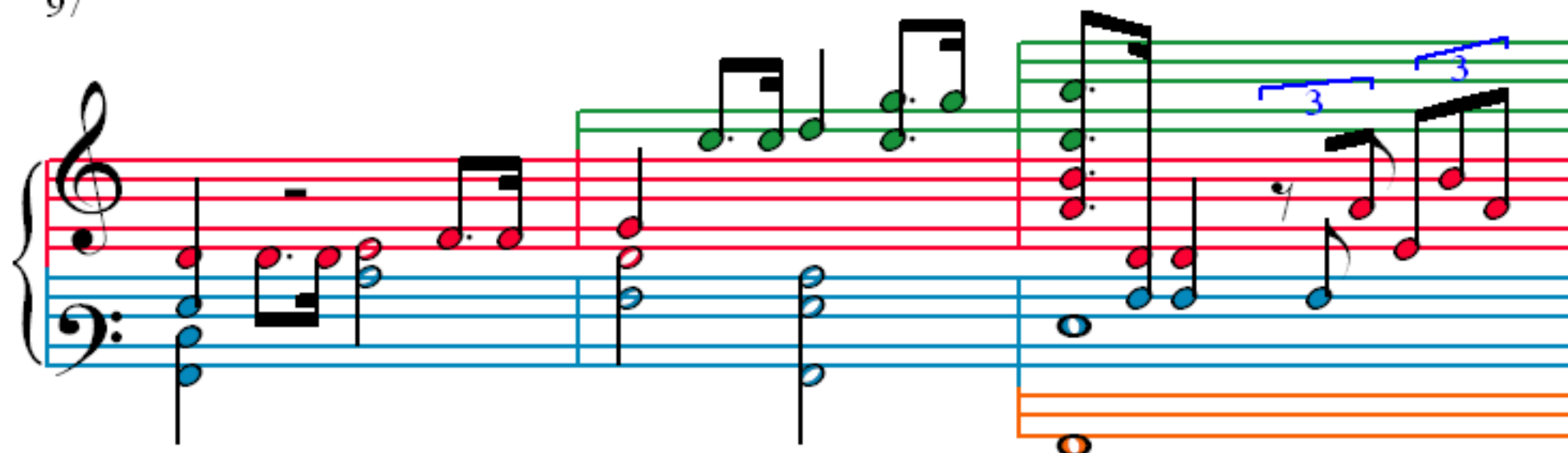
Measures 82-84: The right hand continues with triplets. The left hand plays single notes. A green bracket highlights the first two notes of measure 84.

85

88

91

94



109

Measures 109-112. The system features a grand staff with a treble clef and a bass clef. The treble staff has a green line at the top. The bass staff has a blue line at the bottom. The music is written in a key with one flat (B-flat). The melody in the treble staff consists of eighth and quarter notes, some with slurs. The bass staff contains chords and single notes, with a blue line at the bottom. A blue line is also present at the bottom of the bass staff.

113

Measures 113-116. The system features a grand staff with a treble clef and a bass clef. The treble staff has a red line at the top. The bass staff has a blue line at the bottom. The music is written in a key with one flat (B-flat). The melody in the treble staff consists of eighth and quarter notes, some with slurs. The bass staff contains chords and single notes, with a blue line at the bottom.

117

Measures 117-120. The system features a grand staff with a treble clef and a bass clef. The treble staff has a red line at the top. The bass staff has a blue line at the bottom. The music is written in a key with one flat (B-flat). The melody in the treble staff consists of eighth and quarter notes, some with slurs. The bass staff contains chords and single notes, with a blue line at the bottom.

121

Measures 121-124. The system features a grand staff with a treble clef and a bass clef. The treble staff has a red line at the top. The bass staff has a blue line at the bottom. The music is written in a key with one flat (B-flat). The melody in the treble staff consists of eighth and quarter notes, some with slurs. The bass staff contains chords and single notes, with a blue line at the bottom.