

Ouvertuere

G. F. Handel (1685–1759)

1

4

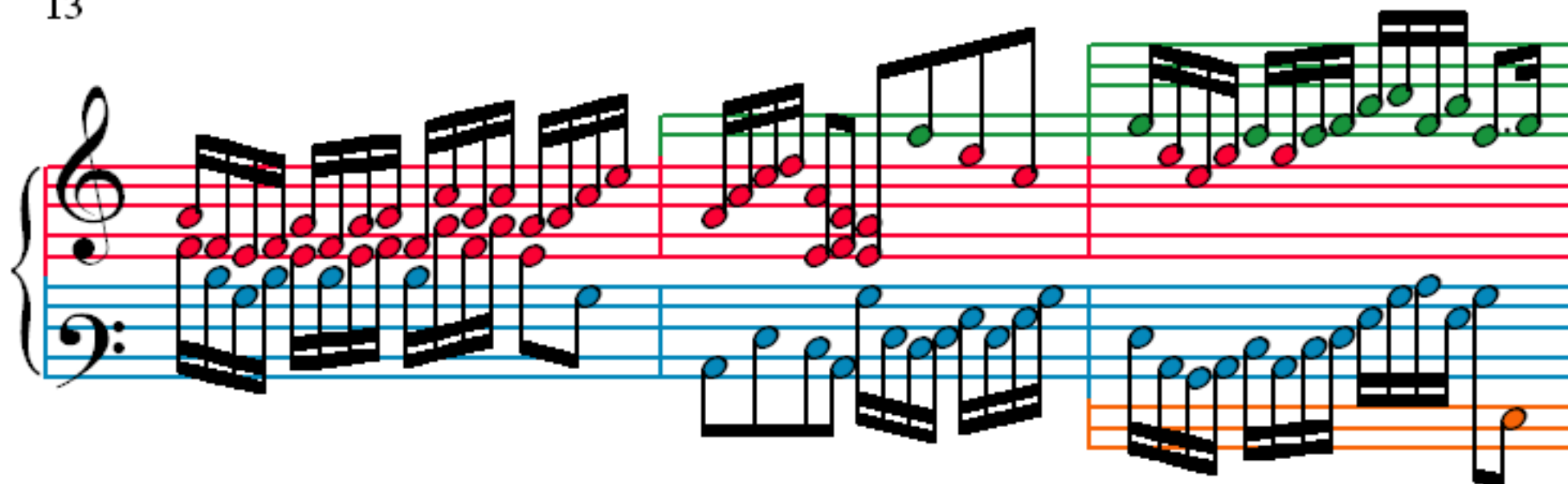
7

10

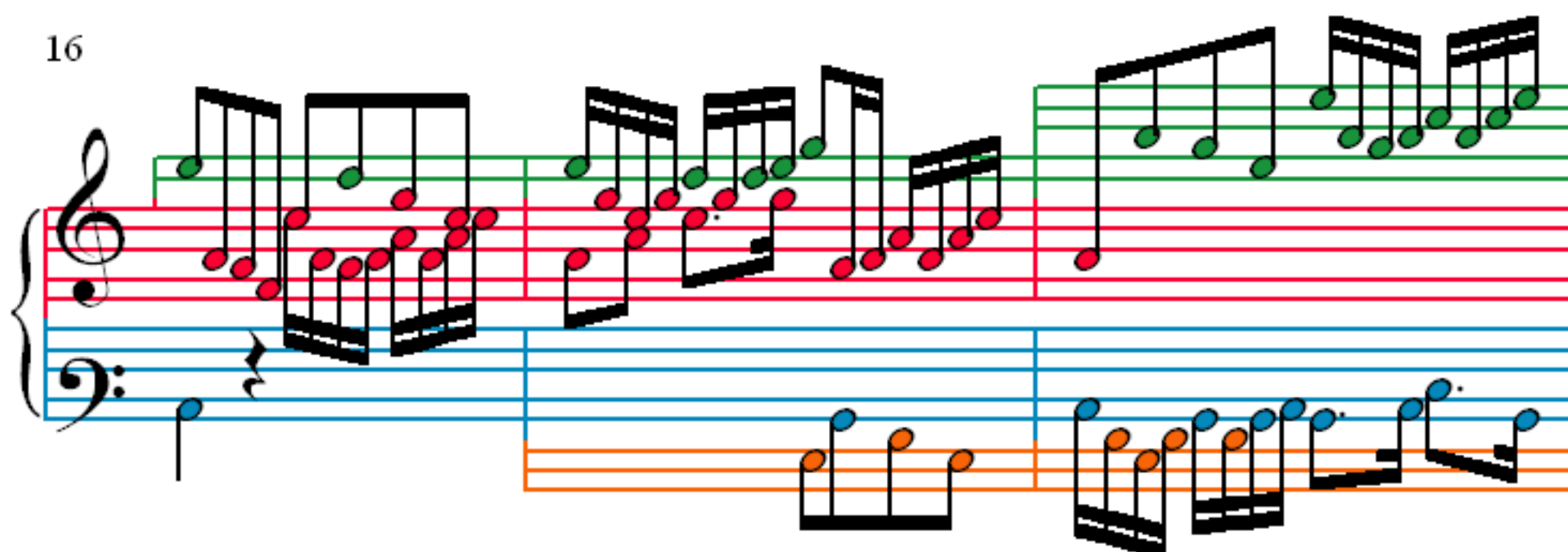
The image displays the first ten measures of the Ouverture by George Frideric Handel. The score is written for a grand staff (treble and bass clefs) in 4/4 time. The notation is color-coded: green for the first system (measures 1-4), orange for the second system (measures 5-8), and blue for the third system (measures 9-10). The first system shows a treble staff with a series of eighth-note chords and a bass staff with a single note. The second system features a treble staff with a single note and a bass staff with a series of eighth-note chords. The third system shows a treble staff with a series of eighth-note chords and a bass staff with a single note. The notation is clear and easy to read, with a focus on the melodic and harmonic structure of the piece.

Notation Format © 2012, R. Ambrose.

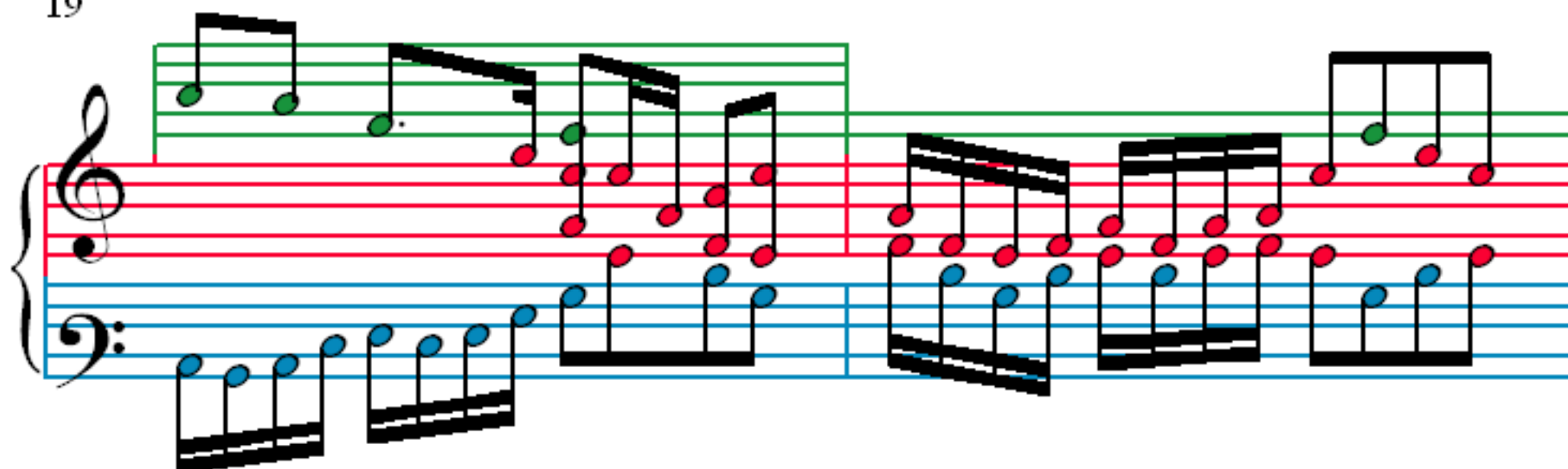
13



16



19



21

