

Lani

R. Kumar (1988–)

1

Measures 1-4 of the piece 'Lani'. The music is in 4/4 time, key of D major (indicated by two sharps). The right hand (treble clef) features a melody with eighth and sixteenth notes, while the left hand (bass clef) provides a harmonic accompaniment with eighth notes. A third staff in orange is present below the bass staff, containing a single note in the first measure.

5

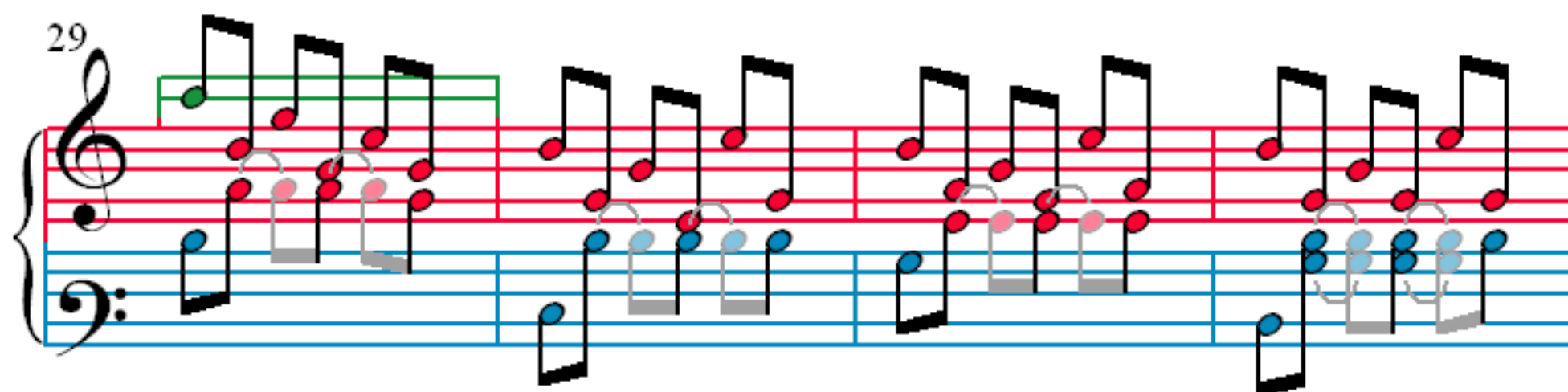
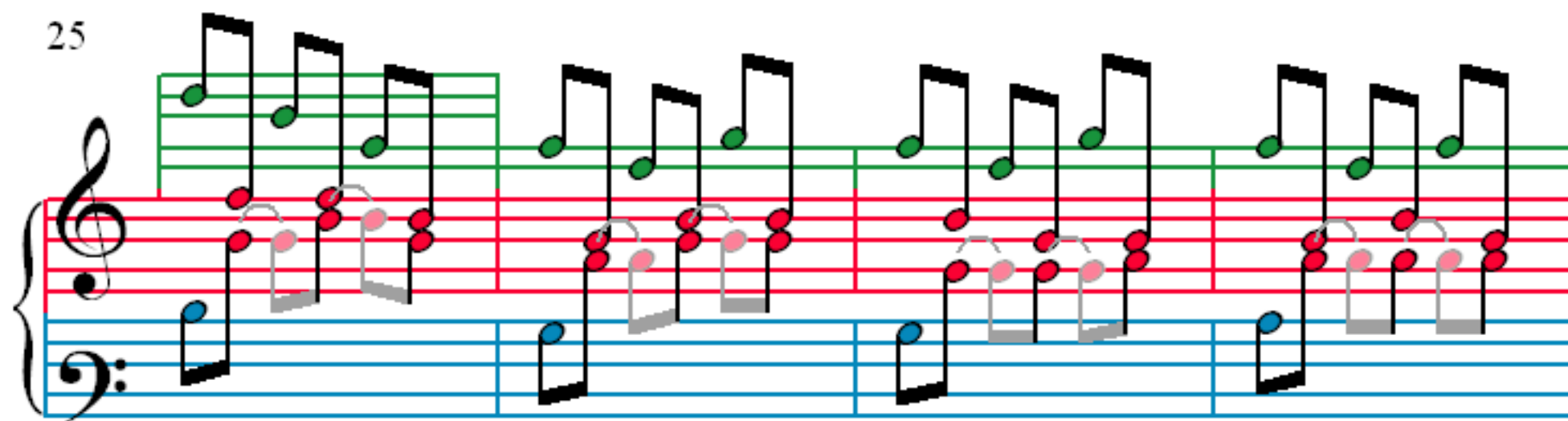
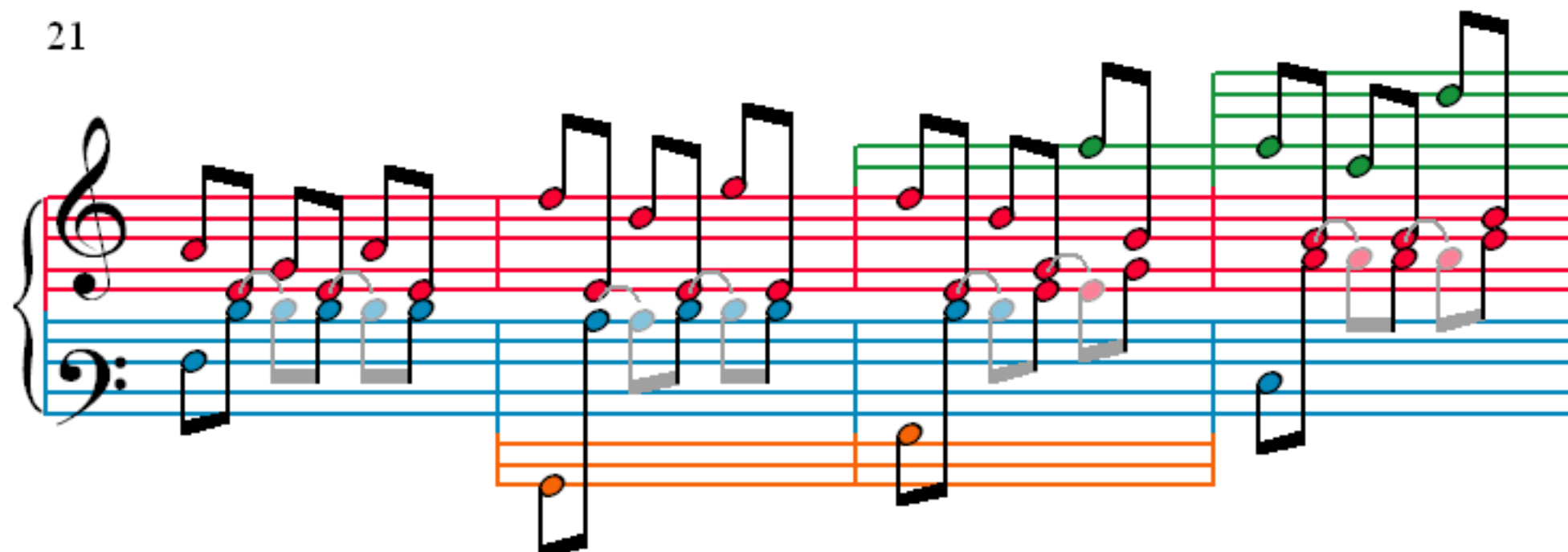
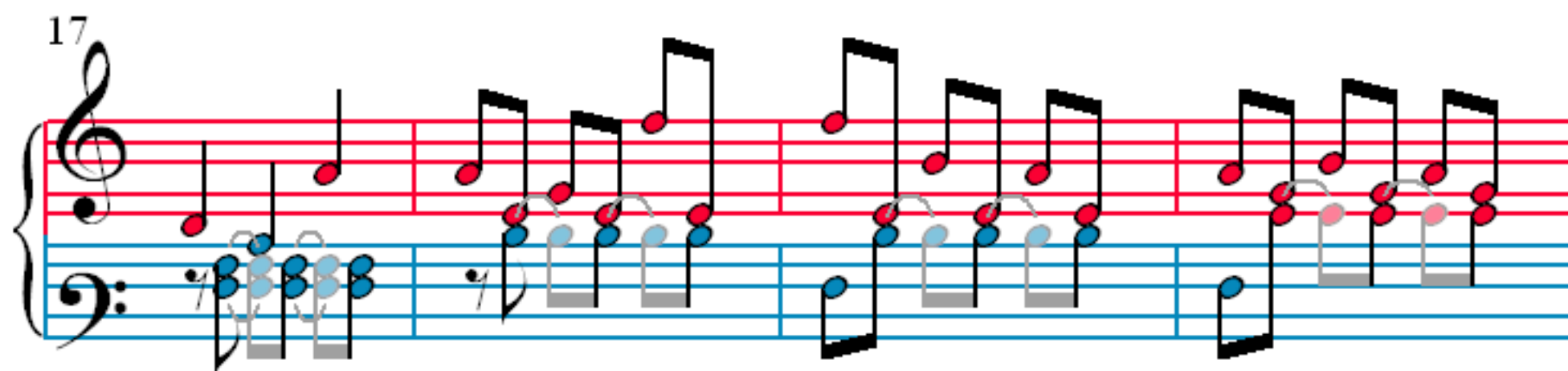
Measures 5-8 of the piece 'Lani'. The right hand continues the melodic line with eighth notes, and the left hand continues the accompaniment with eighth notes. The orange staff remains empty.

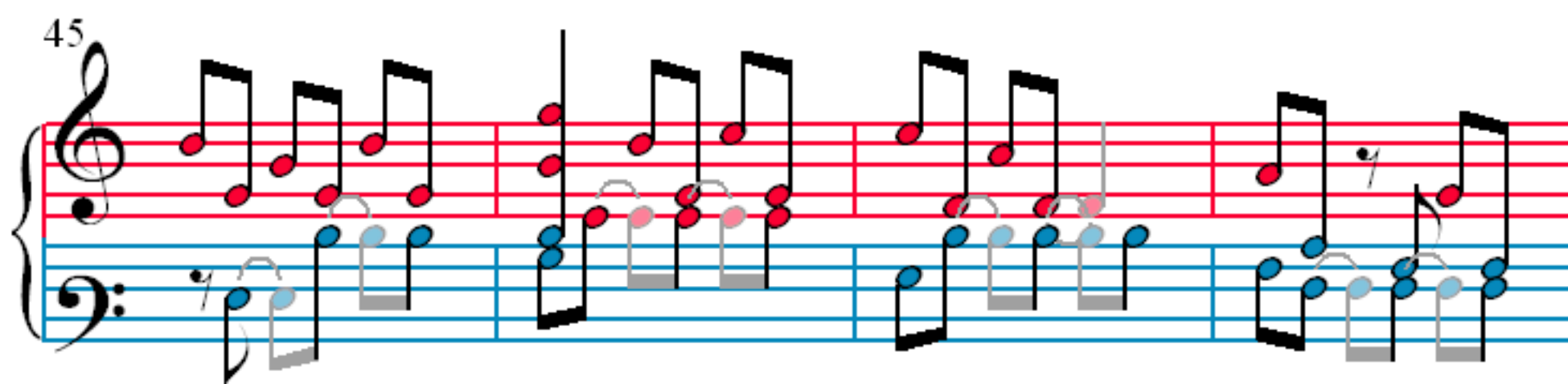
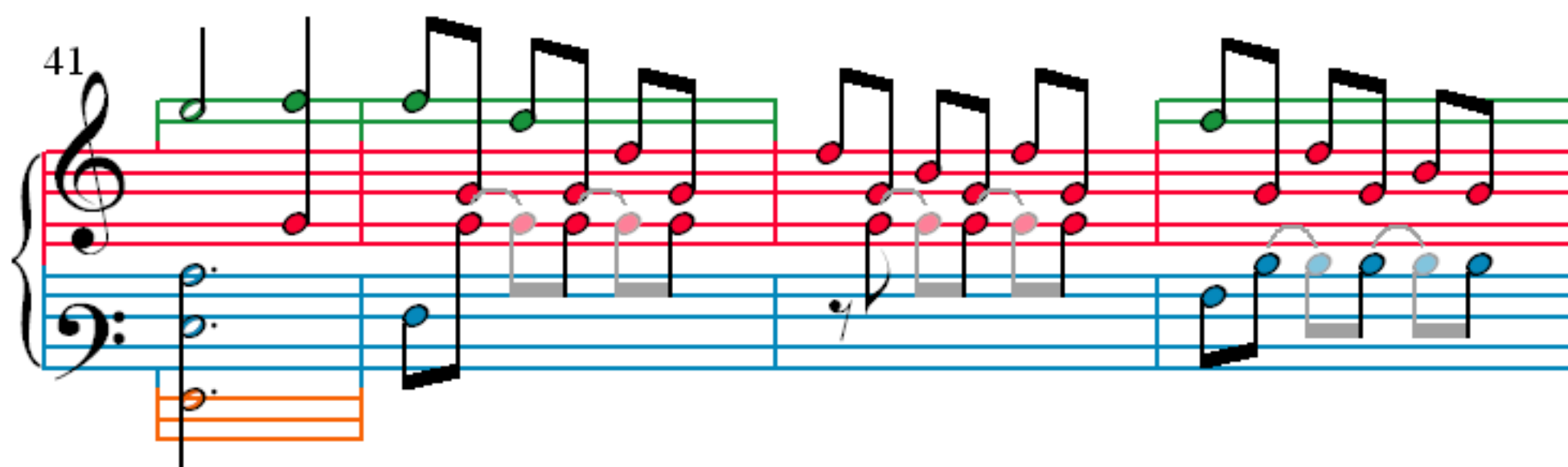
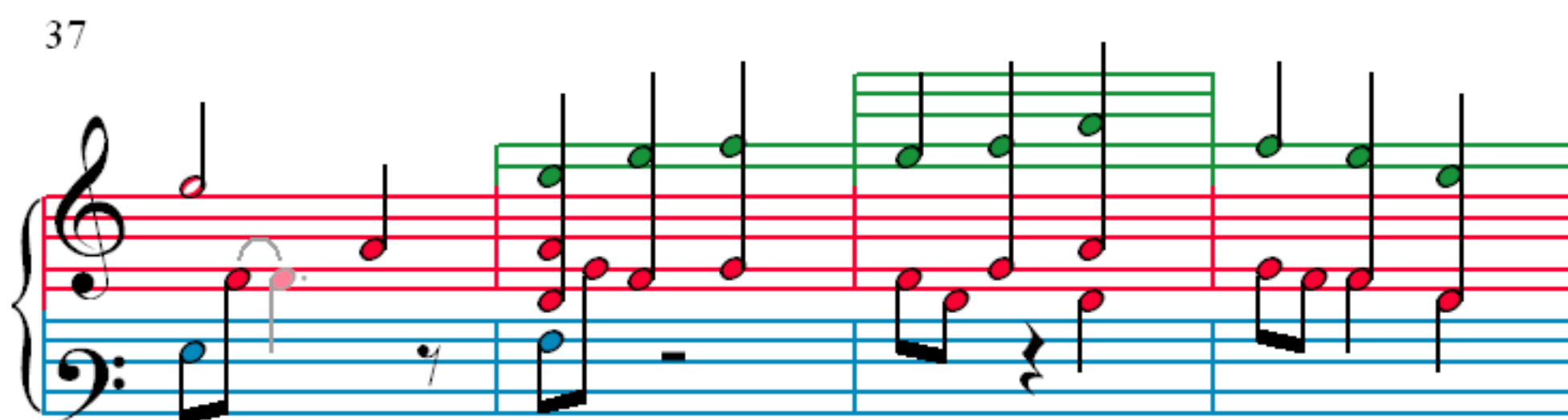
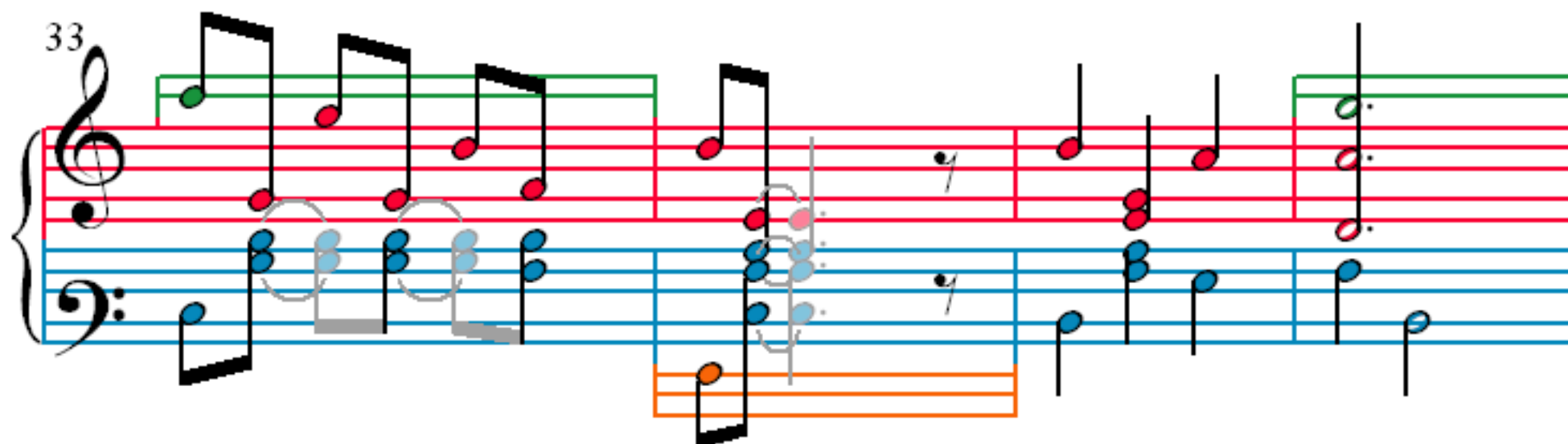
9

Measures 9-12 of the piece 'Lani'. The right hand continues the melodic line. In measure 12, the left hand has a whole rest, and the orange staff contains a single note.

13

Measures 13-16 of the piece 'Lani'. The right hand continues the melodic line. In measure 16, the time signature changes to 3/4. The left hand continues the accompaniment, and the orange staff contains a single note.





49

52

56

60