

Op.19 No.6

Lieder ohne Worte: Venetianisches Gondellied

F. Mendelssohn-Bartholdy (1809–1847)

1

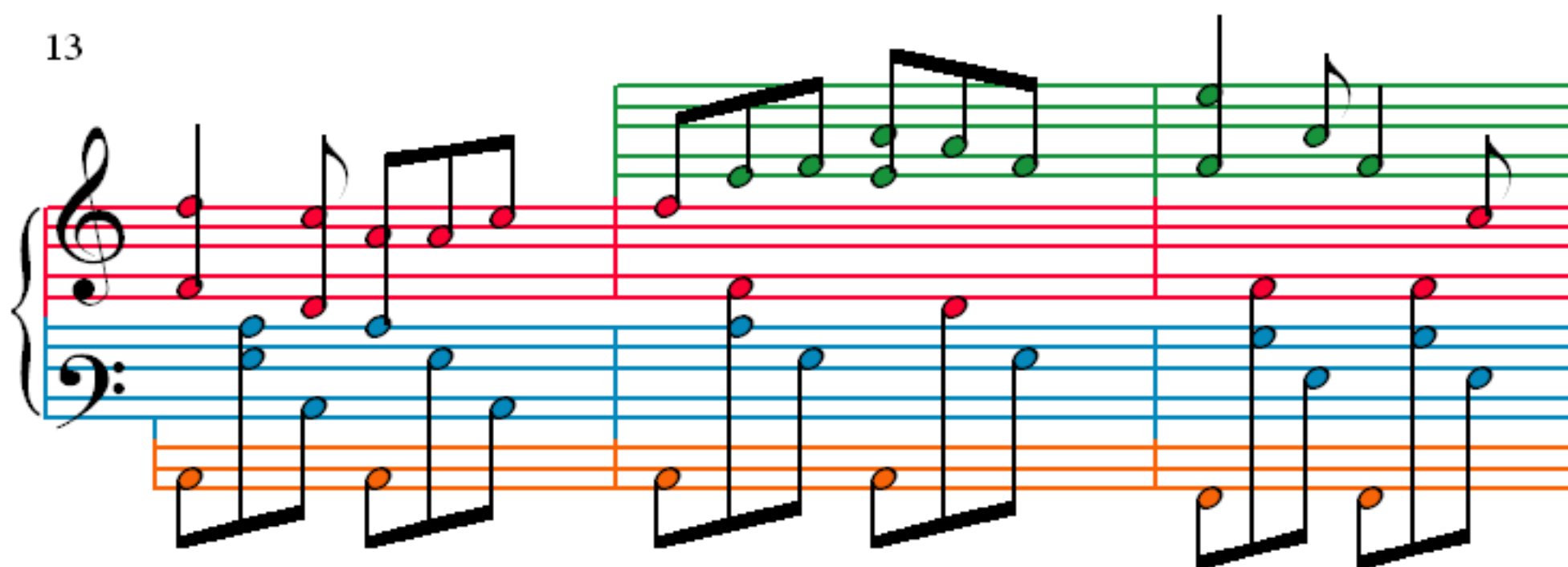
4

7

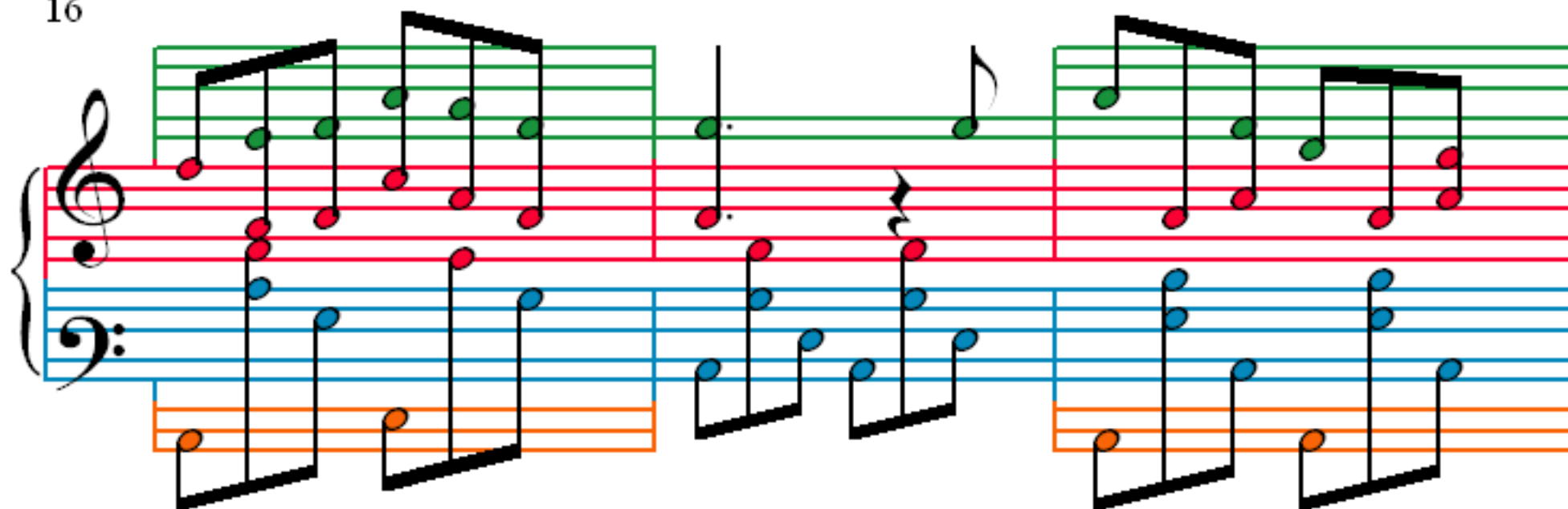
10

The image displays the first four systems of a musical score for 'Venetianisches Gondellied' by Felix Mendelssohn-Bartholdy. Each system consists of a grand staff with a treble and bass clef. The treble staff is highlighted with a green line, and the bass staff is highlighted with a blue line. The notes are color-coded: red for the treble staff, blue for the bass staff, and orange for the lower bass staff. The first system (measures 1-3) shows a treble staff with a whole rest and a bass staff with a sequence of eighth notes. The second system (measures 4-6) shows a treble staff with a whole rest and a bass staff with a sequence of eighth notes. The third system (measures 7-9) shows a treble staff with a whole rest and a bass staff with a sequence of eighth notes. The fourth system (measures 10-12) shows a treble staff with a whole rest and a bass staff with a sequence of eighth notes.

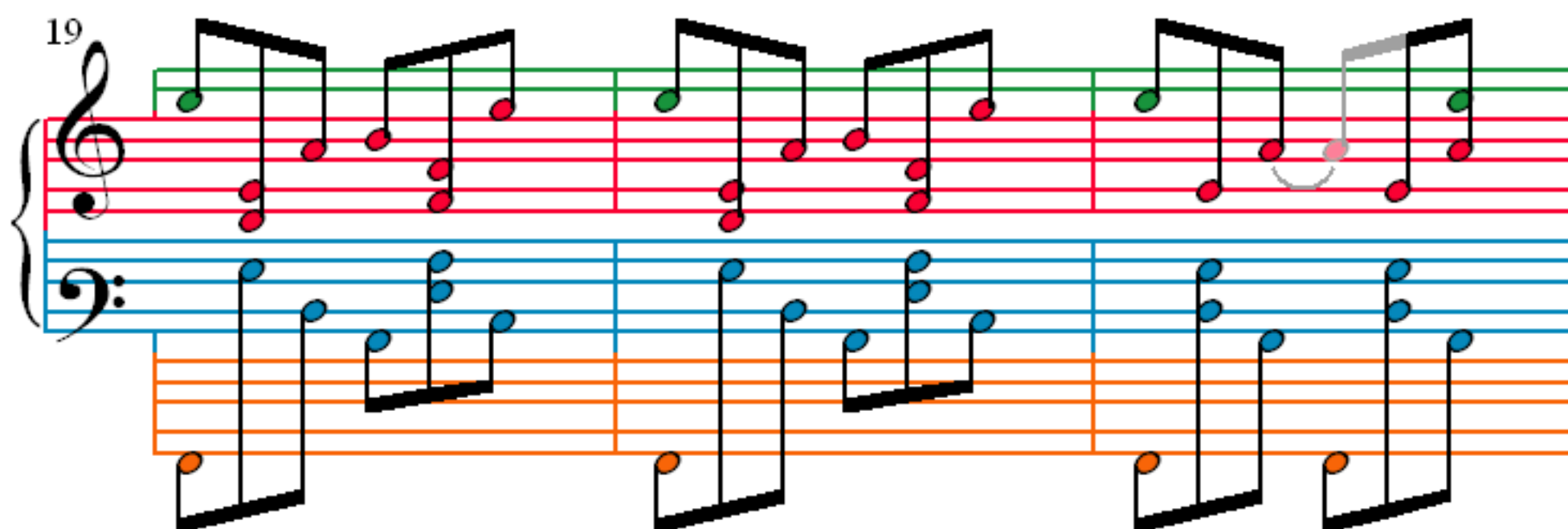
13



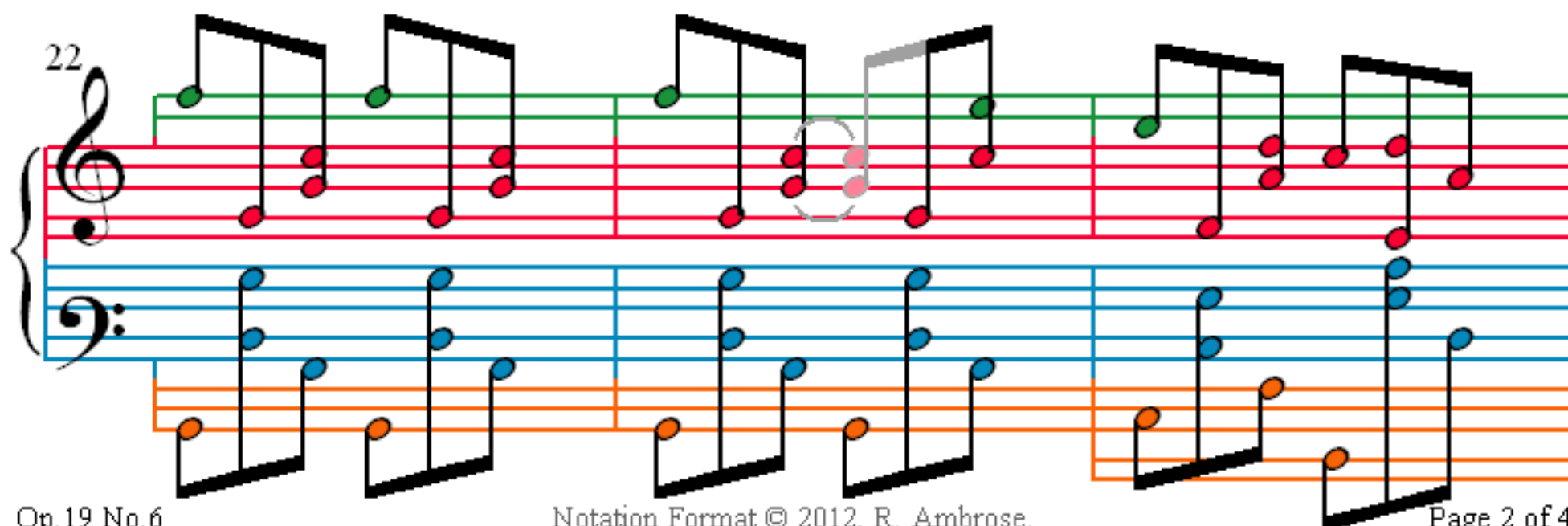
16



19



22



25

Measures 25-27 of a musical score. The system consists of three staves: a grand staff (treble and bass clefs) and a lower staff. The grand staff has a green line above it. The treble staff contains eighth-note chords, with green notes on the green line and red notes on the red lines. The bass staff contains whole notes, with blue notes on the blue line and red notes on the red lines. The lower staff contains whole notes, with orange notes on the orange line and pink notes on the pink line. The measures are: 25 (treble: two eighth-note chords, bass: whole note, lower: whole note), 26 (treble: two eighth-note chords, bass: whole note, lower: whole note), 27 (treble: two eighth-note chords, bass: whole note, lower: whole note).

28

Measures 28-30 of a musical score. The system consists of three staves: a grand staff (treble and bass clefs) and a lower staff. The grand staff has a green line above it. The treble staff contains eighth-note chords, with green notes on the green line and red notes on the red lines. The bass staff contains whole notes, with blue notes on the blue line and red notes on the red lines. The lower staff contains whole notes, with orange notes on the orange line and pink notes on the pink line. The measures are: 28 (treble: two eighth-note chords, bass: whole note, lower: whole note), 29 (treble: two eighth-note chords, bass: whole note, lower: whole note), 30 (treble: two eighth-note chords, bass: whole note, lower: whole note).

31

Measures 31-33 of a musical score. The system consists of three staves: a grand staff (treble and bass clefs) and a lower staff. The grand staff has a green line above it. The treble staff contains eighth-note chords, with green notes on the green line and red notes on the red lines. The bass staff contains whole notes, with blue notes on the blue line and red notes on the red lines. The lower staff contains whole notes, with orange notes on the orange line and pink notes on the pink line. The measures are: 31 (treble: two eighth-note chords, bass: whole note, lower: whole note), 32 (treble: two eighth-note chords, bass: whole note, lower: whole note), 33 (treble: two eighth-note chords, bass: whole note, lower: whole note).

34

Measures 34-36 of a musical score. The system consists of three staves: a grand staff (treble and bass clefs) and a lower staff. The grand staff has a green line above it. The treble staff contains eighth-note chords, with green notes on the green line and red notes on the red lines. The bass staff contains whole notes, with blue notes on the blue line and red notes on the red lines. The lower staff contains whole notes, with orange notes on the orange line and pink notes on the pink line. The measures are: 34 (treble: two eighth-note chords, bass: whole note, lower: whole note), 35 (treble: two eighth-note chords, bass: whole note, lower: whole note), 36 (treble: two eighth-note chords, bass: whole note, lower: whole note).

36

38

40

43