

La Bayadère - Variation de Nikya

L. A. Minkus (1826–1917)

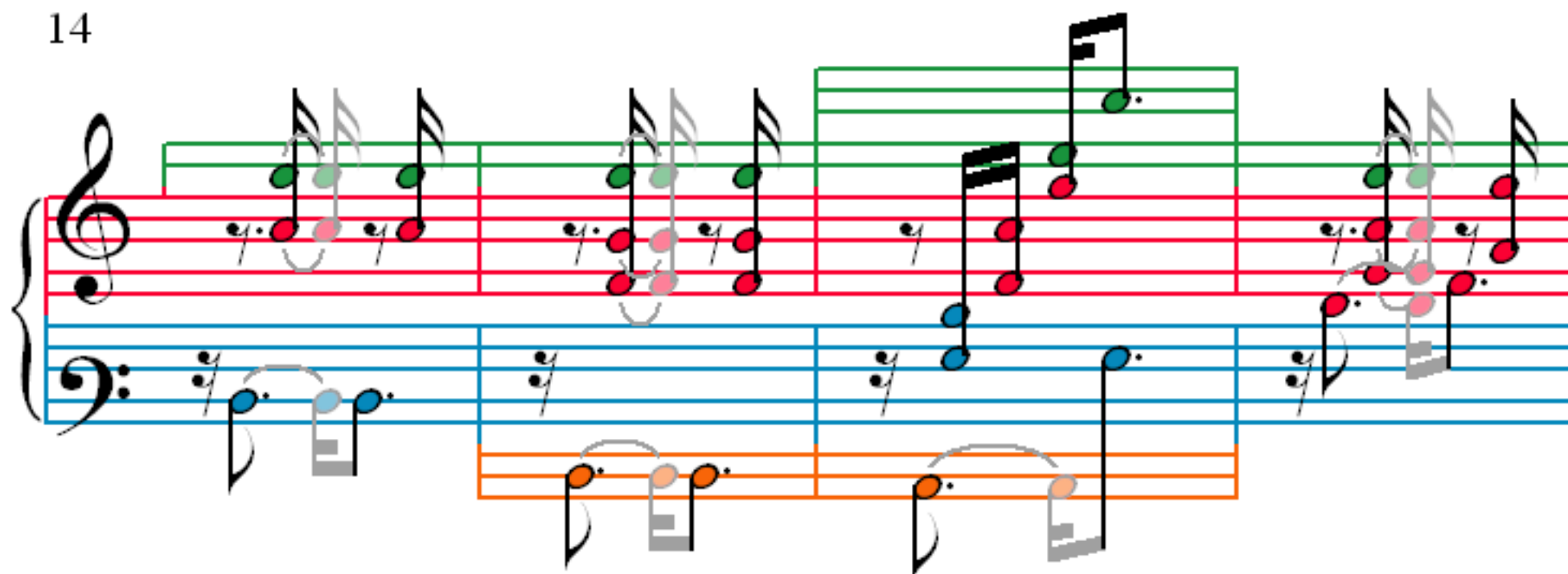
1

5

8

11

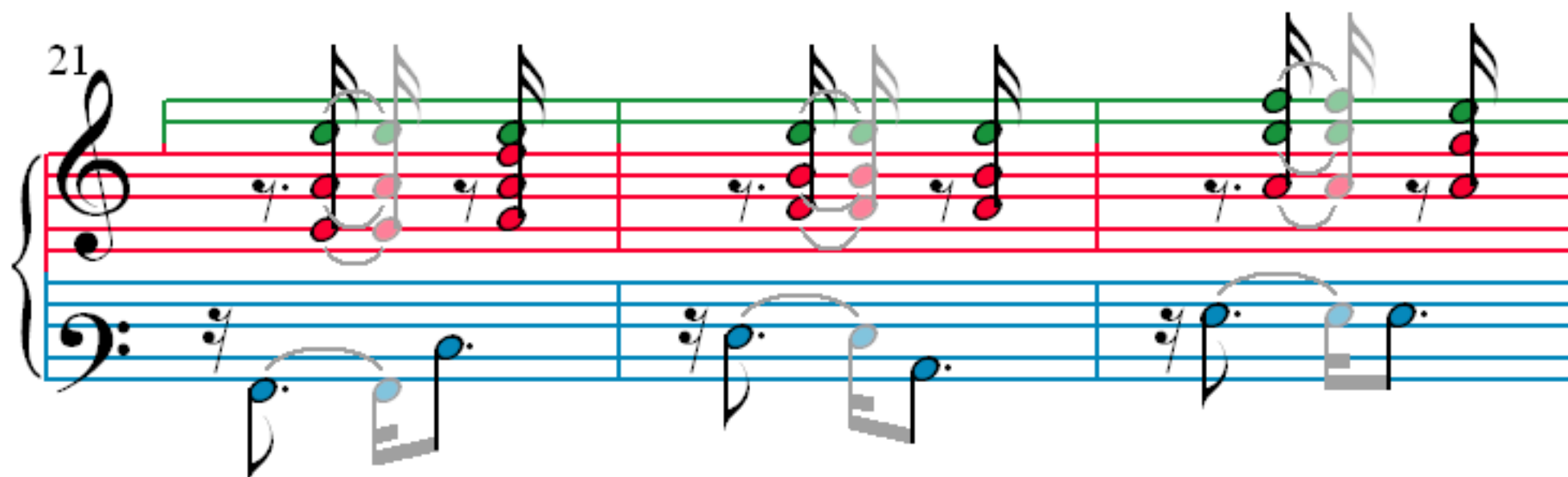
14



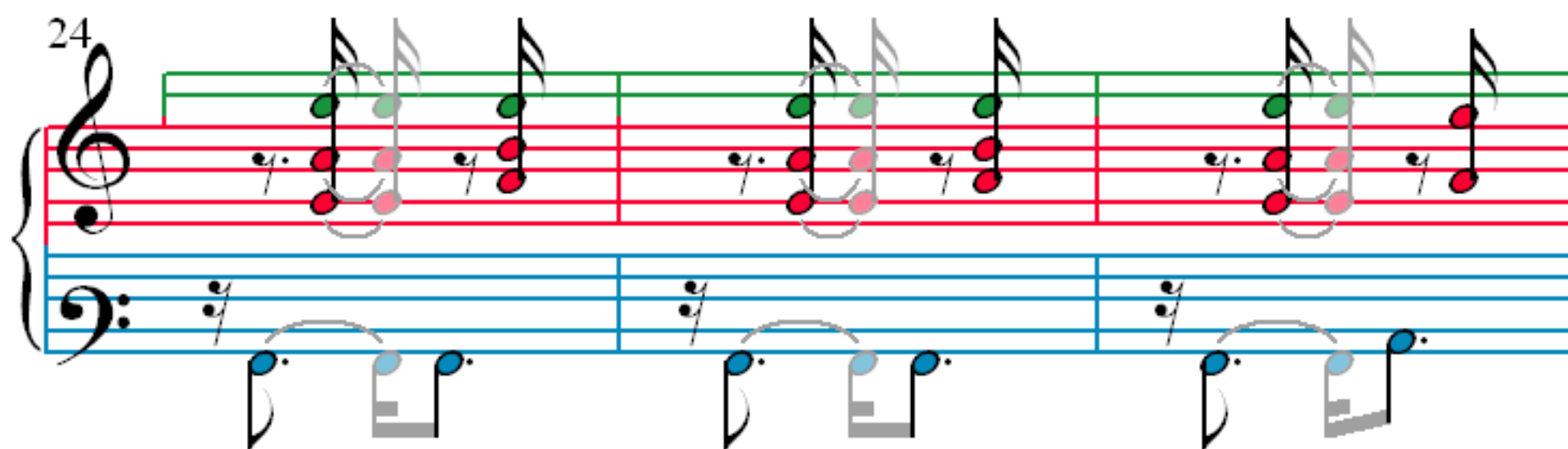
18



21



24



27

Measures 27-30: Treble clef (green line), Bass clef (orange line). Notes are colored red, blue, and orange.

31

Measures 31-34: Treble clef (green line), Bass clef (orange line). Notes are colored red, blue, and orange.

35

Measures 35-38: Treble clef (green line), Bass clef (orange line). Notes are colored red, blue, and orange.

39

Measures 39-42: Treble clef (green line), Bass clef (orange line). Notes are colored red, blue, and orange.