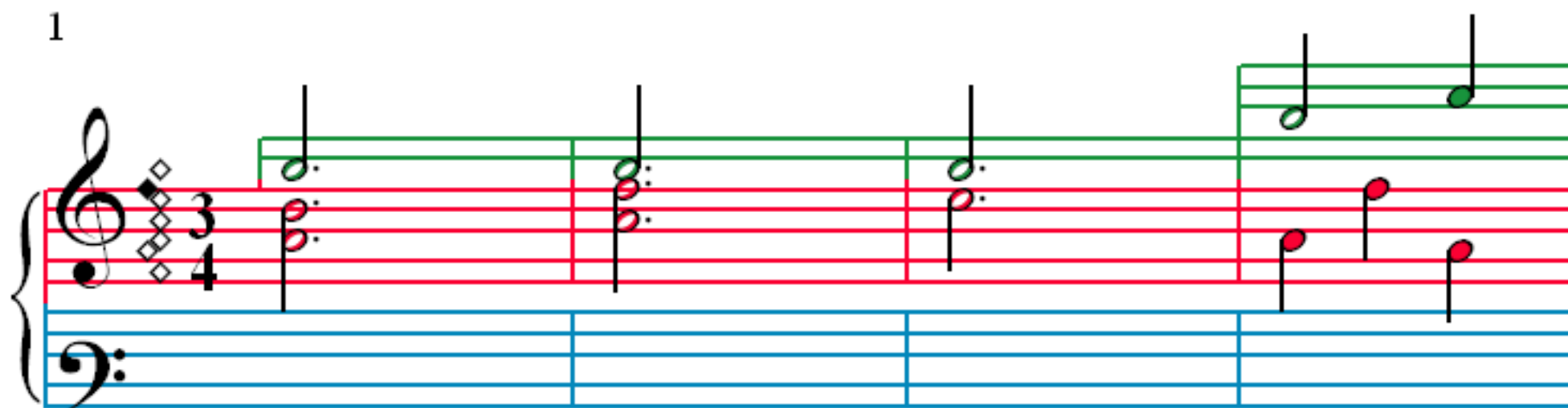


Fantasia

W. A. Mozart (1756–1791)

1



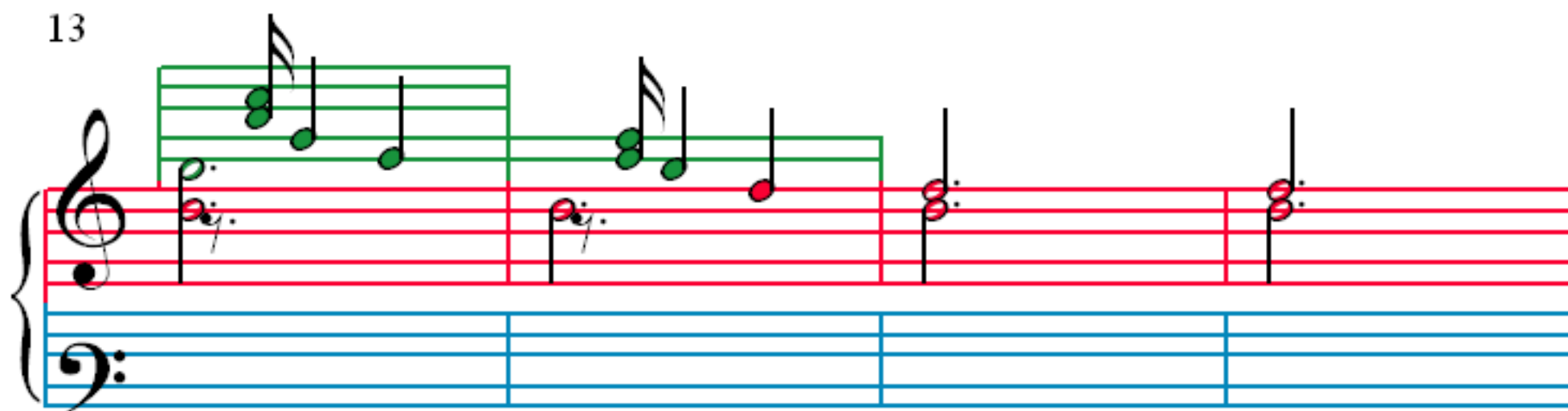
5



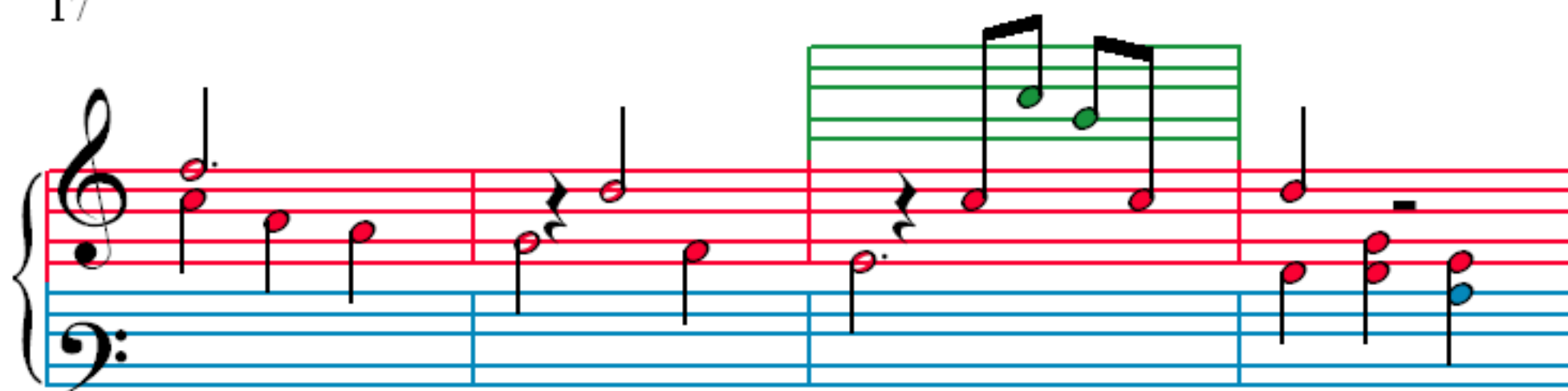
9



13



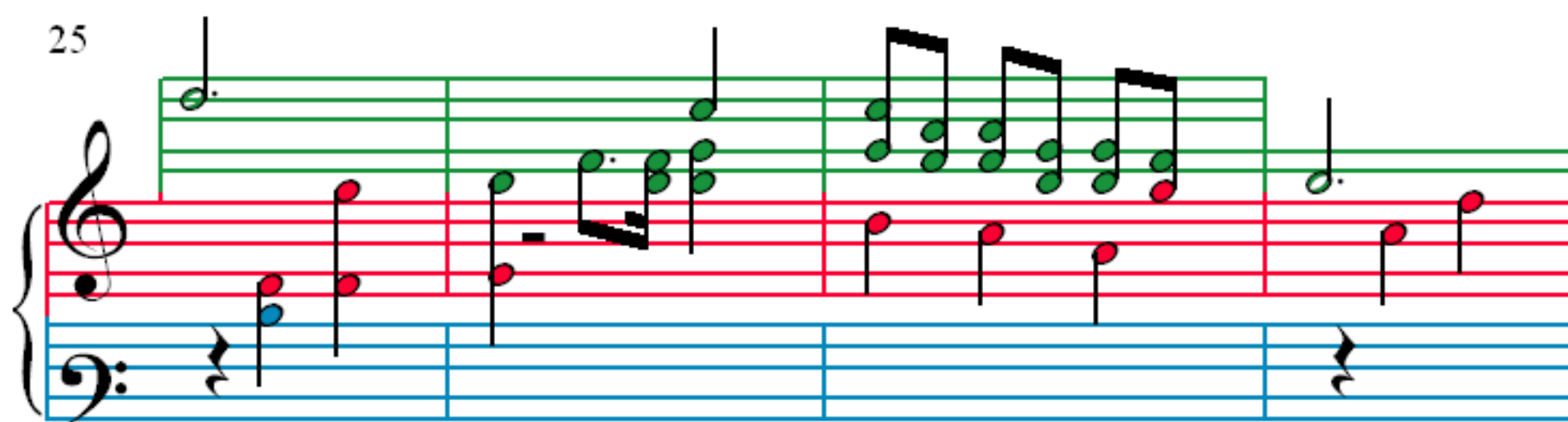
17



21



25



29



34

37

41

44

47

47

The musical score for Example 47 consists of two staves. The treble staff (top) features a series of notes, some of which are grouped together in a single measure, indicating a complex rhythmic pattern. The notes are primarily green, with some red notes appearing in the final measures. The bass staff (bottom) contains several measures with notes, some of which are grouped together, and some measures with rests. The notes in the bass staff are primarily black, with some red notes appearing in the final measures. The score is divided into measures by vertical bar lines, and the overall structure suggests a complex, multi-measure piece.

50

50

The musical score for Example 10.10 is presented in three measures. The vocal line, written on a single staff with a treble clef, features a melody of eighth and sixteenth notes. The piano accompaniment is written on two staves: the right hand on a treble clef and the left hand on a bass clef. The piano part features a complex, arpeggiated figure in the right hand and a simpler, rhythmic pattern in the left hand. The notes are color-coded: green for the vocal line, red for the piano right hand, and blue for the piano left hand.

53

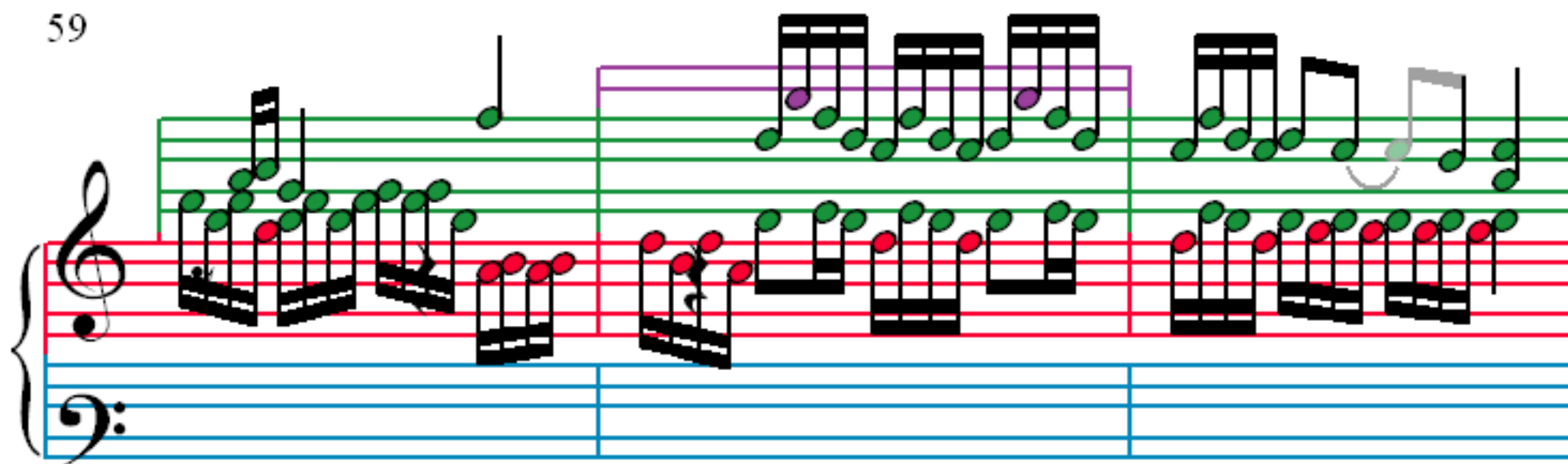
53

56

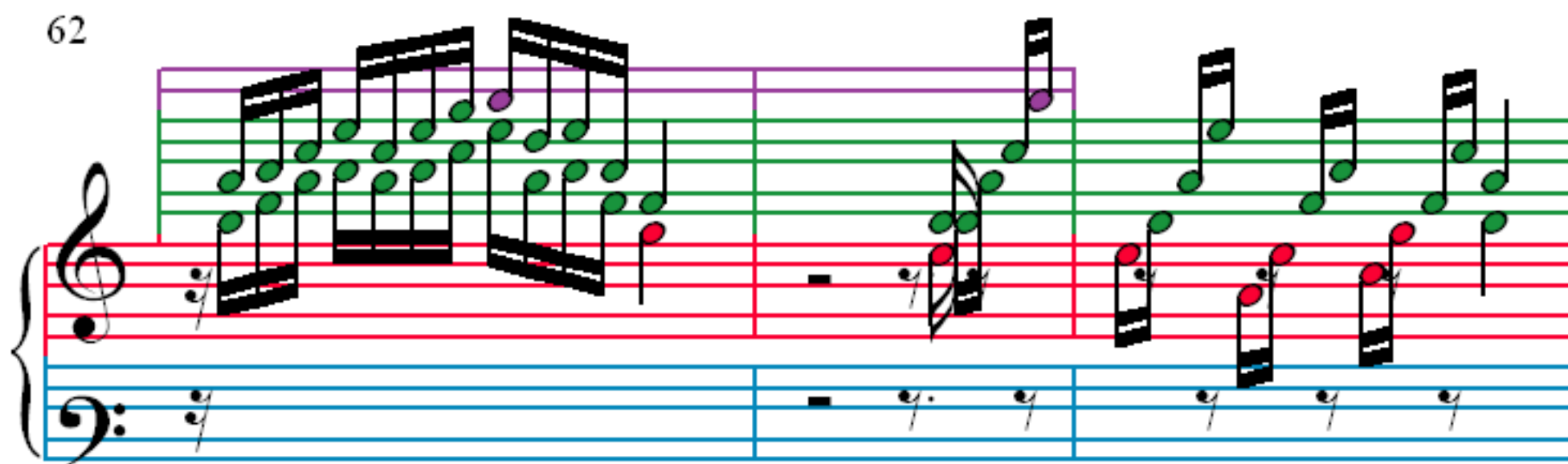
56

The image shows a musical score for Example 10-10. It consists of a piano accompaniment and a vocal line. The piano part is written on a grand staff (treble and bass clefs) with red and green notes. The vocal line is written on a single staff with green notes. The piano part features a complex rhythmic pattern with many beamed notes, while the vocal line is simpler, consisting of a few notes.

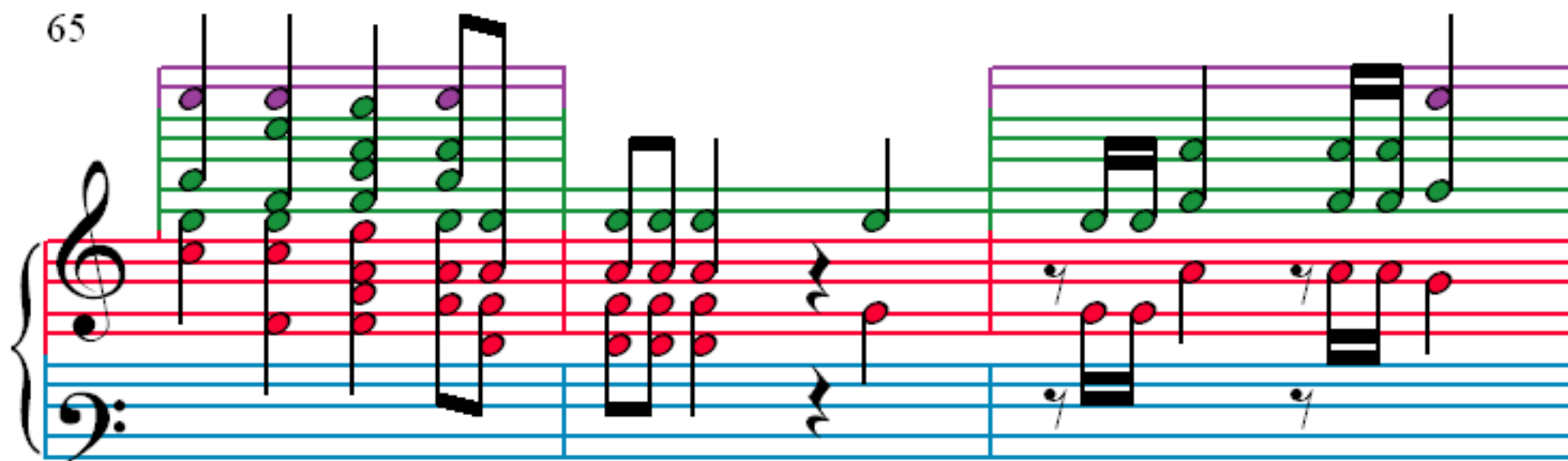
59



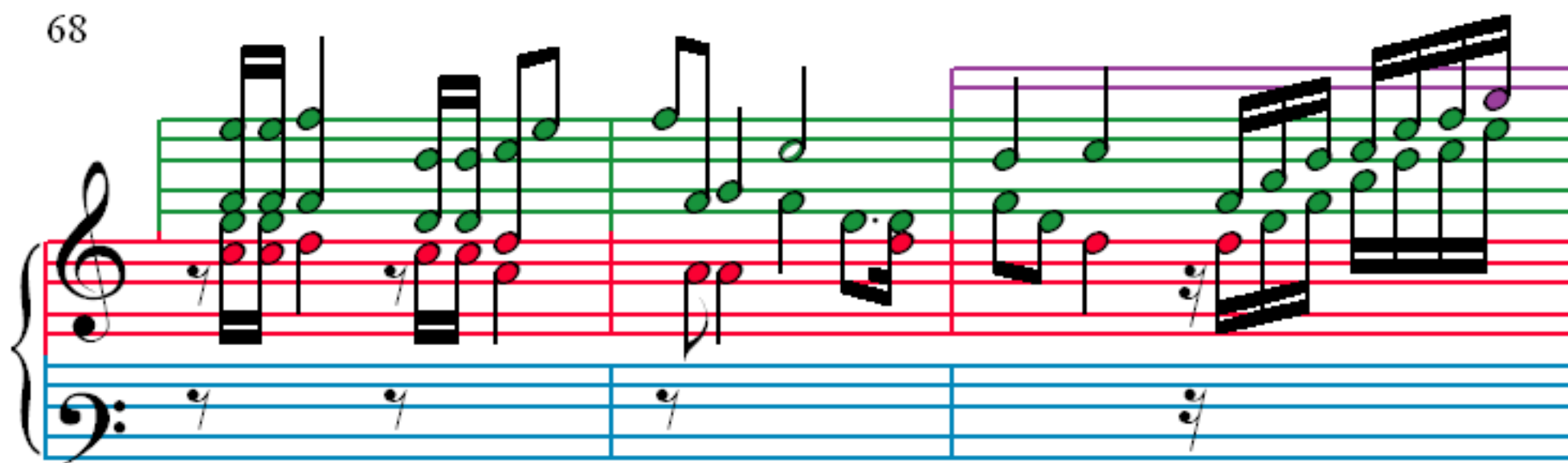
62



65



68



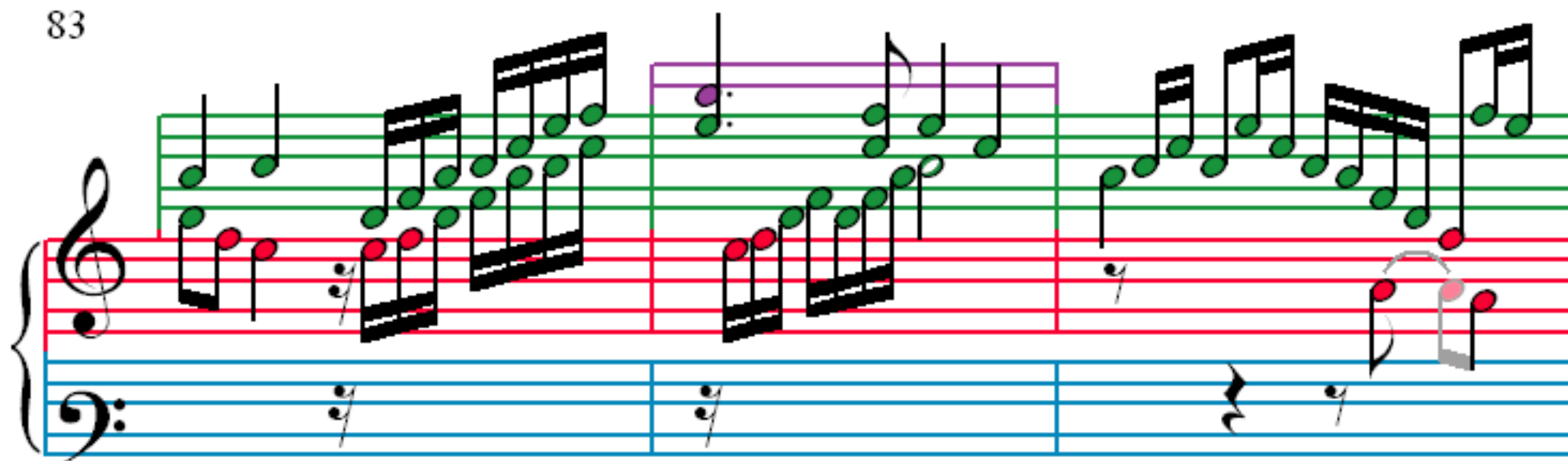
71

74

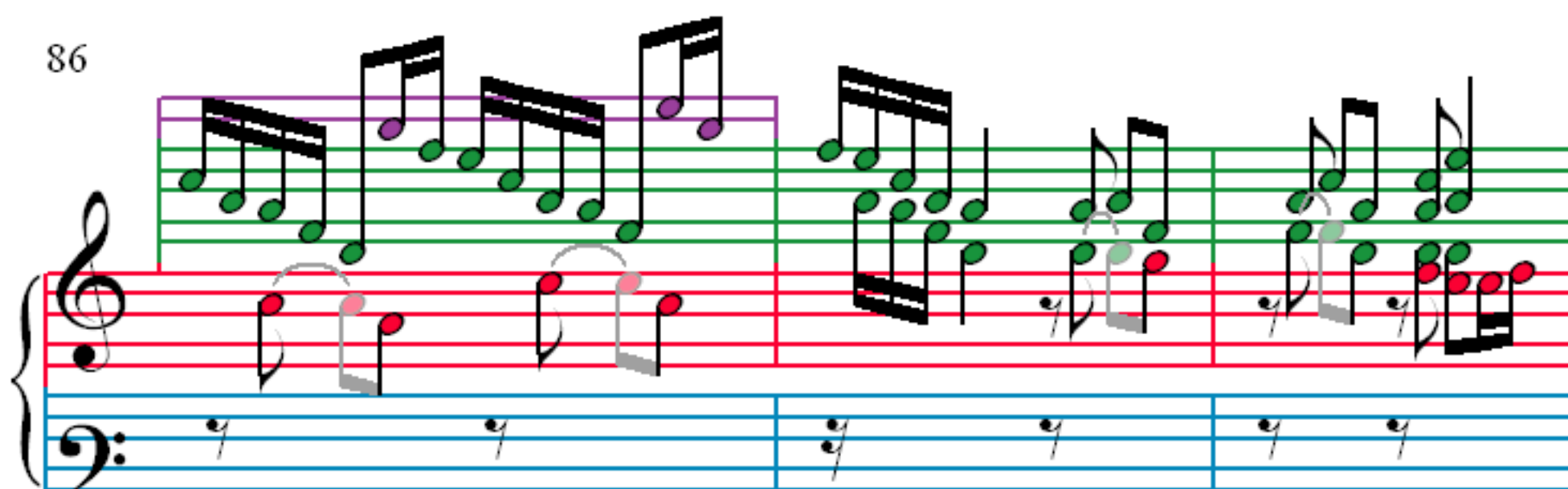
77

80

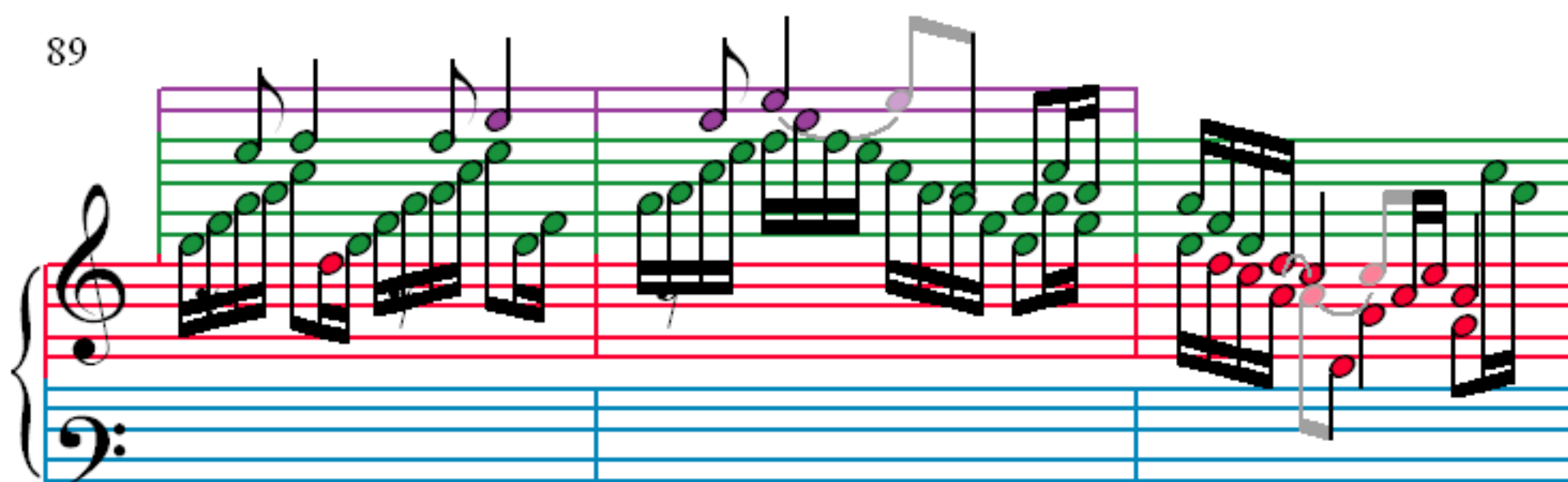
83



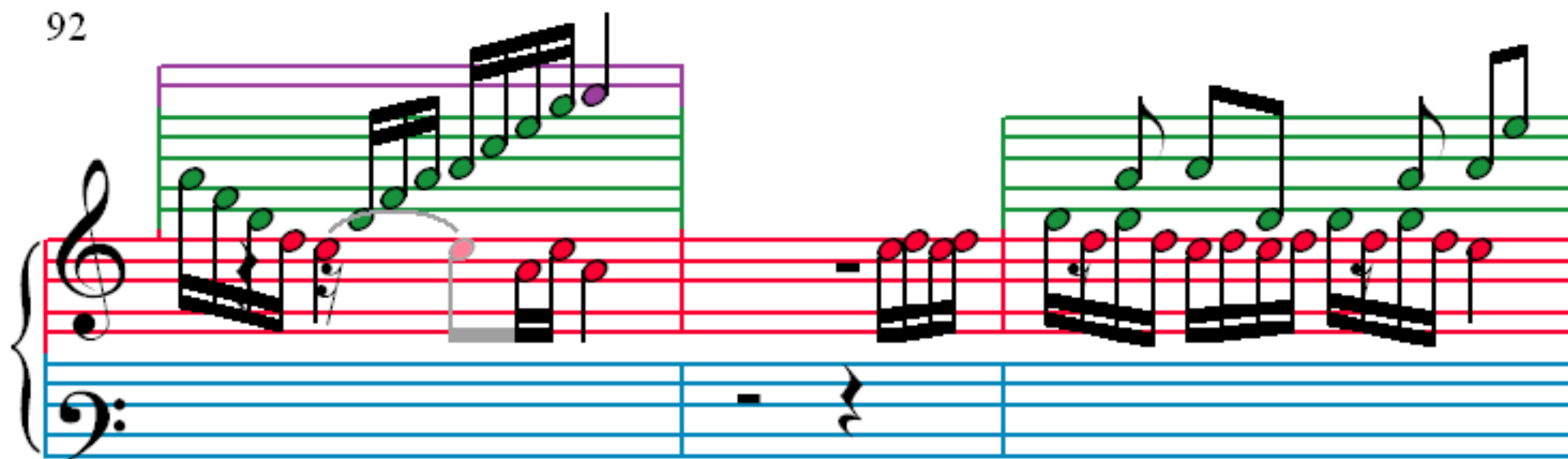
86



89



92



95

98

101

104

107

110

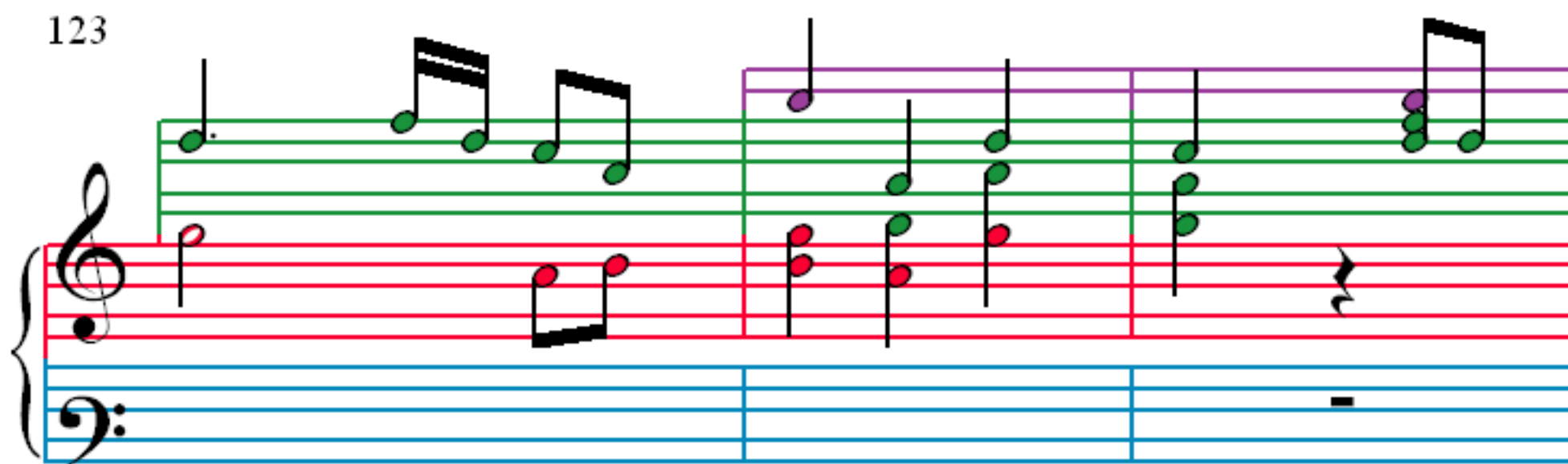
113

116

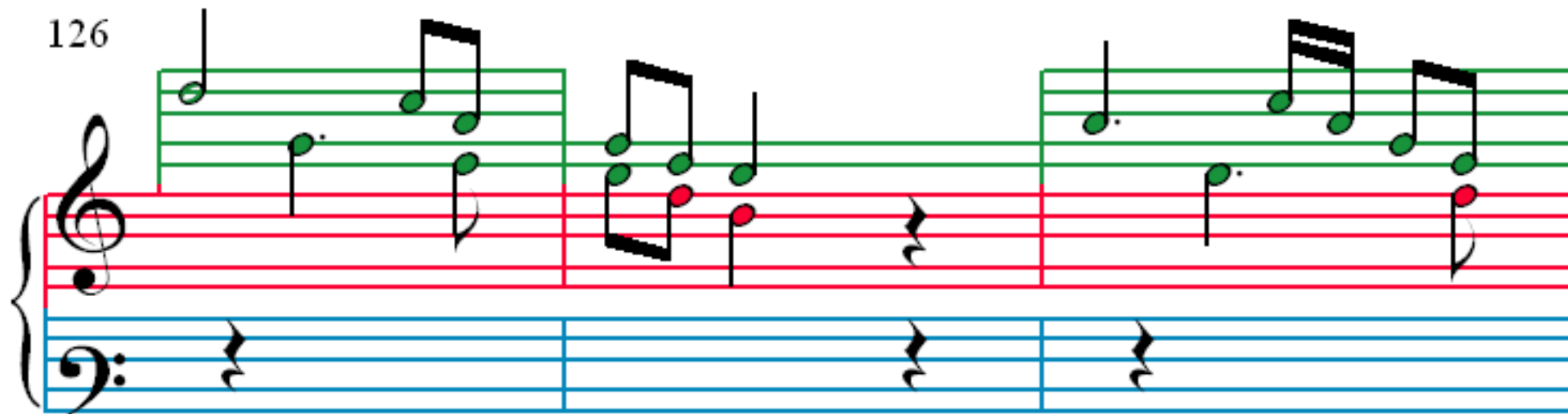
119



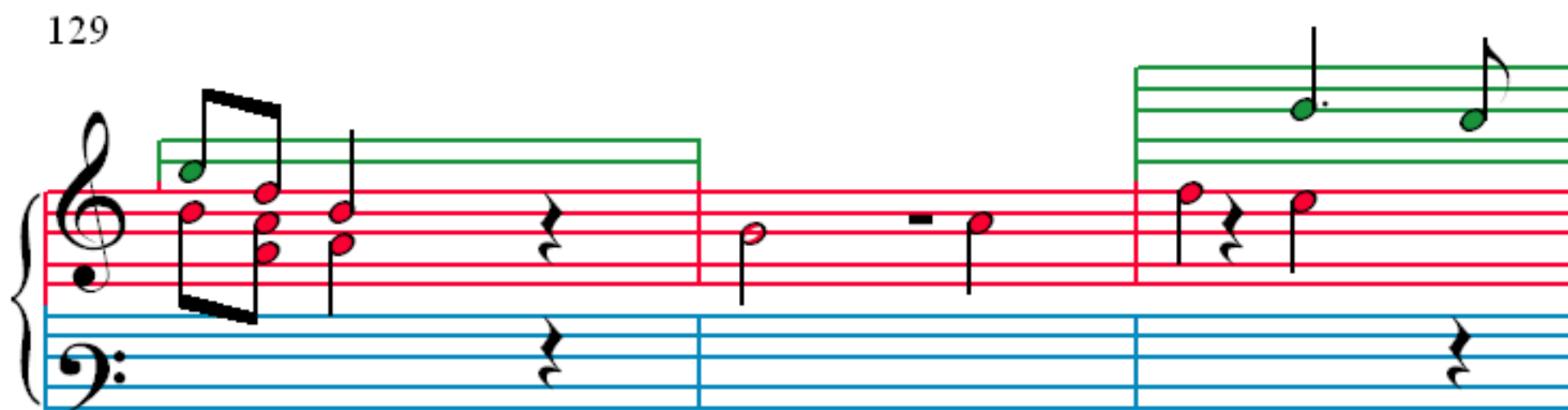
123



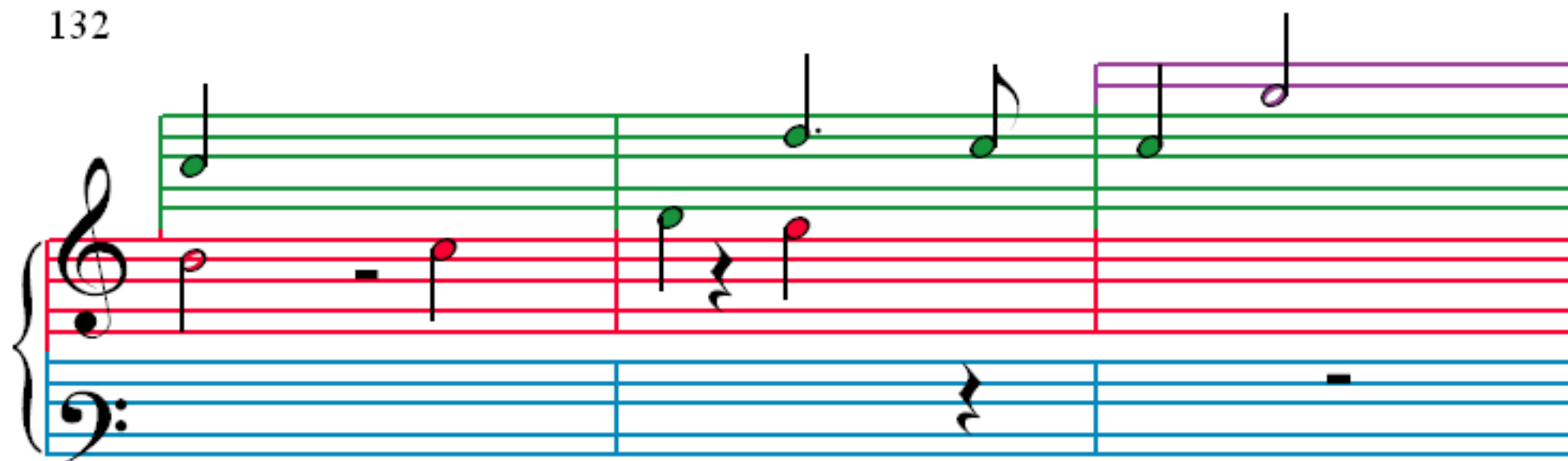
126



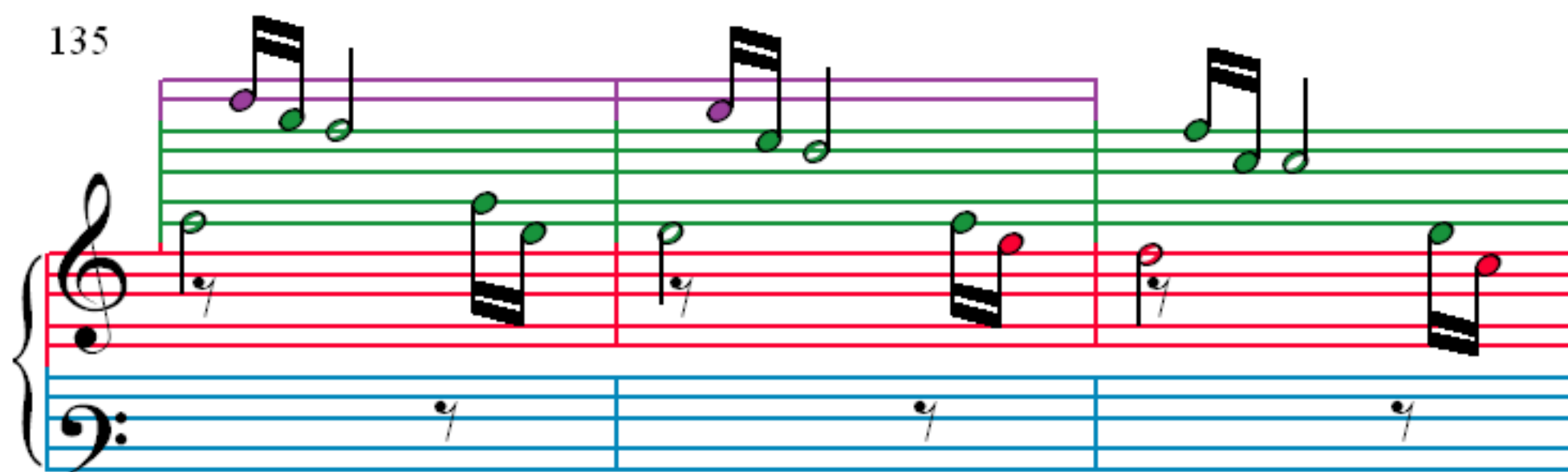
129



132



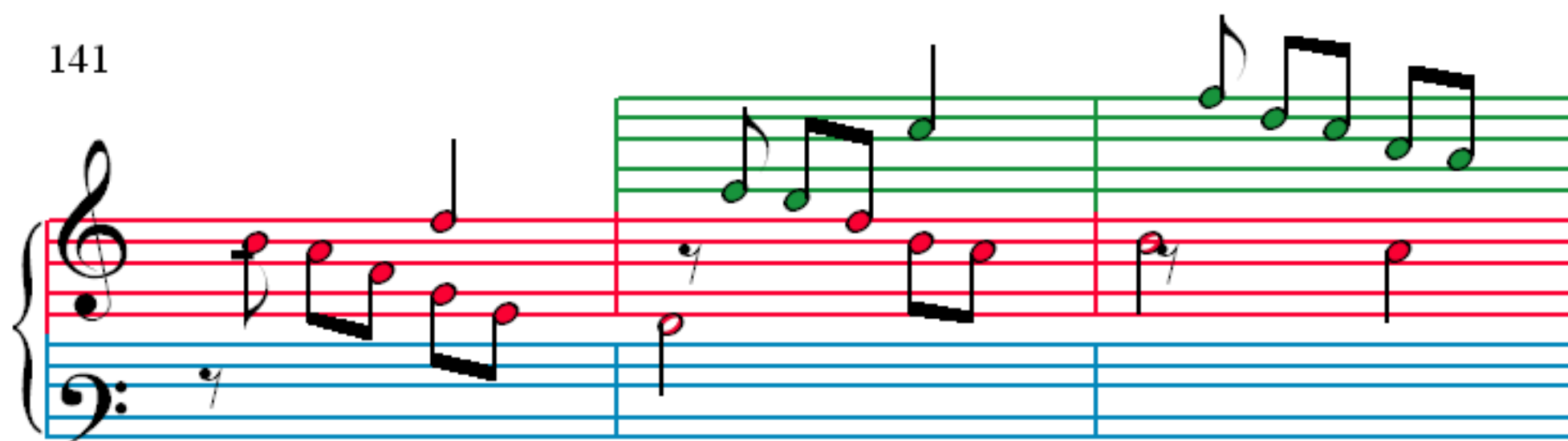
135



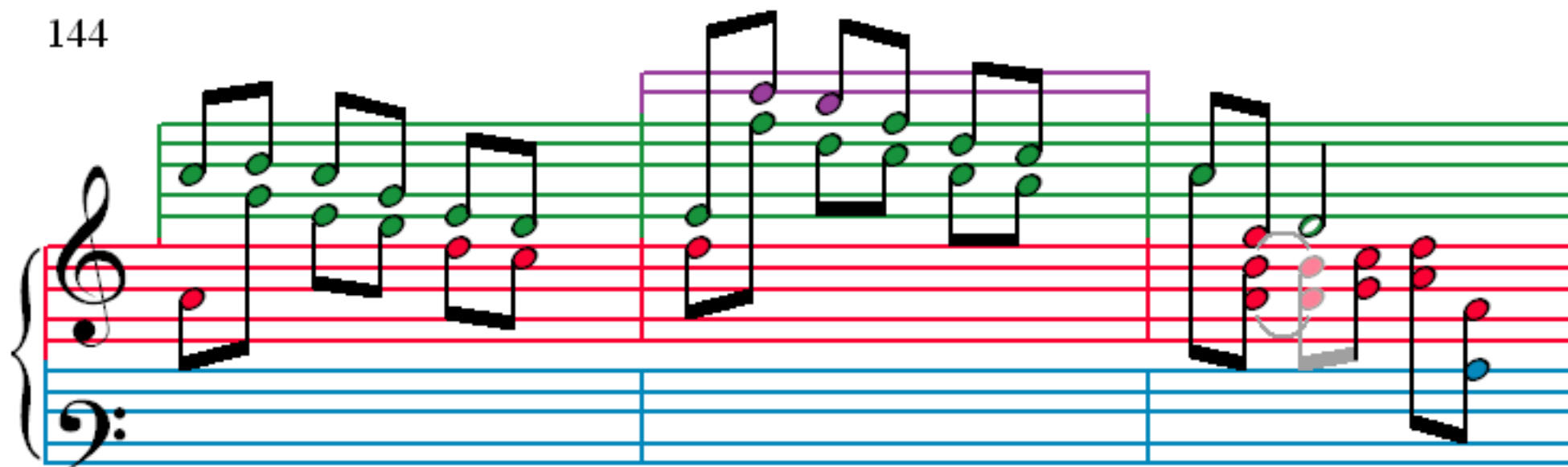
138



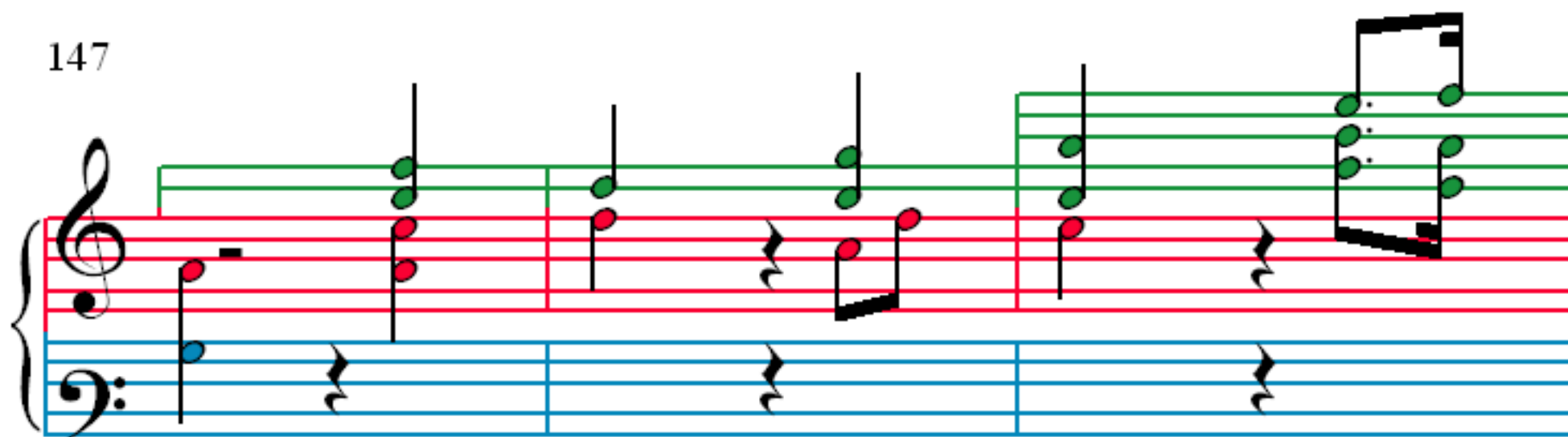
141



144



147



150



153

