

Etude

N. Rimsky-Korsakov (1844–1908)

1

4

7

10

The image displays a musical score for a piece titled 'Etude' by N. Rimsky-Korsakov. The score is presented in a simplified, color-coded notation format. It consists of four systems of music, each representing a four-measure phrase. The first system is labeled with a '1' at the beginning. The second system is labeled with a '4' at the beginning. The third system is labeled with a '7' at the beginning. The fourth system is labeled with a '10' at the beginning. Each system contains two staves: a treble staff (top) and a bass staff (bottom). The notes are color-coded: green for the treble staff and blue for the bass staff. The notes are connected by stems, and the rhythm is indicated by the placement of the notes on the staff lines. The score is set in 3/4 time, as indicated by the '3' over the '4' in the first system. The notation is simplified, with no accidentals or dynamic markings. The background is white, and the staves are blue. The notes are green and blue. The stems are black. The time signature is 3/4. The piece is in G major, as indicated by the one sharp (F#) in the key signature of the first system.

13

Measures 13-15. Treble clef has a green line at the top. Bass clef has a blue line at the bottom. An orange line is below the bass staff. Notes are colored green, red, blue, and orange.

16

Measures 16-18. Treble clef has a green line at the top. Bass clef has a blue line at the bottom. An orange line is below the bass staff. Notes are colored green, red, blue, and orange.

19

Measures 19-21. Treble clef has a green line at the top. Bass clef has a blue line at the bottom. An orange line is below the bass staff. Notes are colored green, red, blue, and orange.

22

Measures 22-24. Treble clef has a green line at the top. Bass clef has a blue line at the bottom. An orange line is below the bass staff. Notes are colored green, red, blue, and orange.

25

Measures 25-27: Treble clef (red notes), Bass clef (blue notes), and a lower staff (orange notes).

28

Measures 28-30: Treble clef (green notes), Bass clef (blue notes), and a lower staff (orange notes).

31

Measures 31-33: Treble clef (green notes), Bass clef (blue notes), and a lower staff (orange notes).

34

Measures 34-36: Treble clef (green notes), Bass clef (blue notes), and a lower staff (orange notes).

37

Measures 37-39: Treble clef (green line), Bass clef (blue line), and an orange line below the bass staff. Notes are colored: green for the top line, red for the middle lines, blue for the bottom line, and orange for the line below the bass staff.

40

Measures 40-42: Treble clef (green line), Bass clef (blue line), and an orange line below the bass staff. Notes are colored: green for the top line, red for the middle lines, blue for the bottom line, and orange for the line below the bass staff.

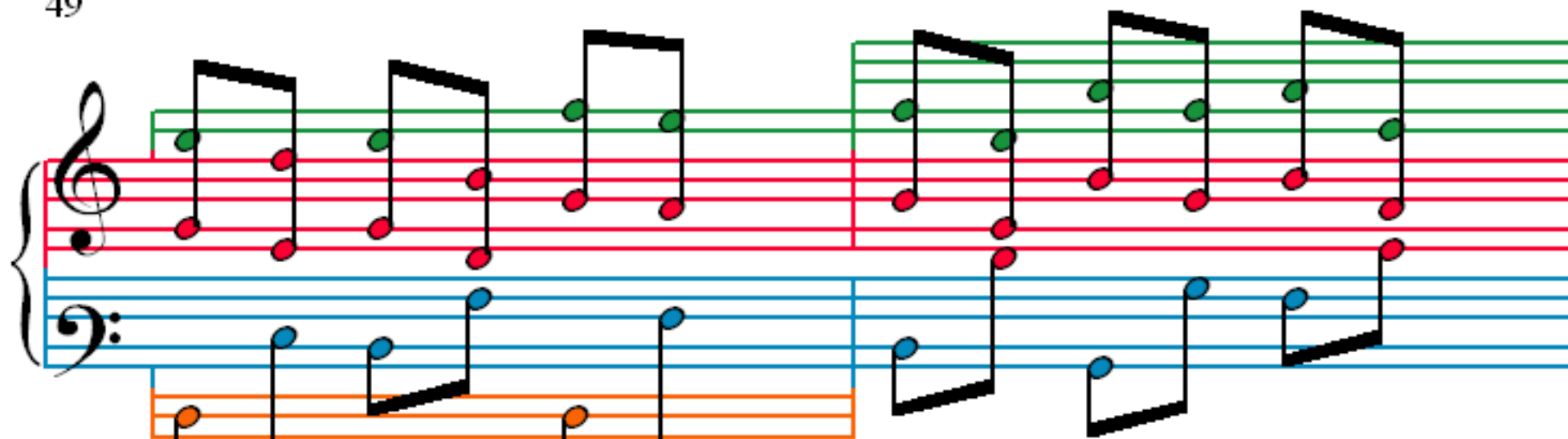
43

Measures 43-45: Treble clef (green line), Bass clef (blue line), and an orange line below the bass staff. Notes are colored: green for the top line, red for the middle lines, blue for the bottom line, and orange for the line below the bass staff.

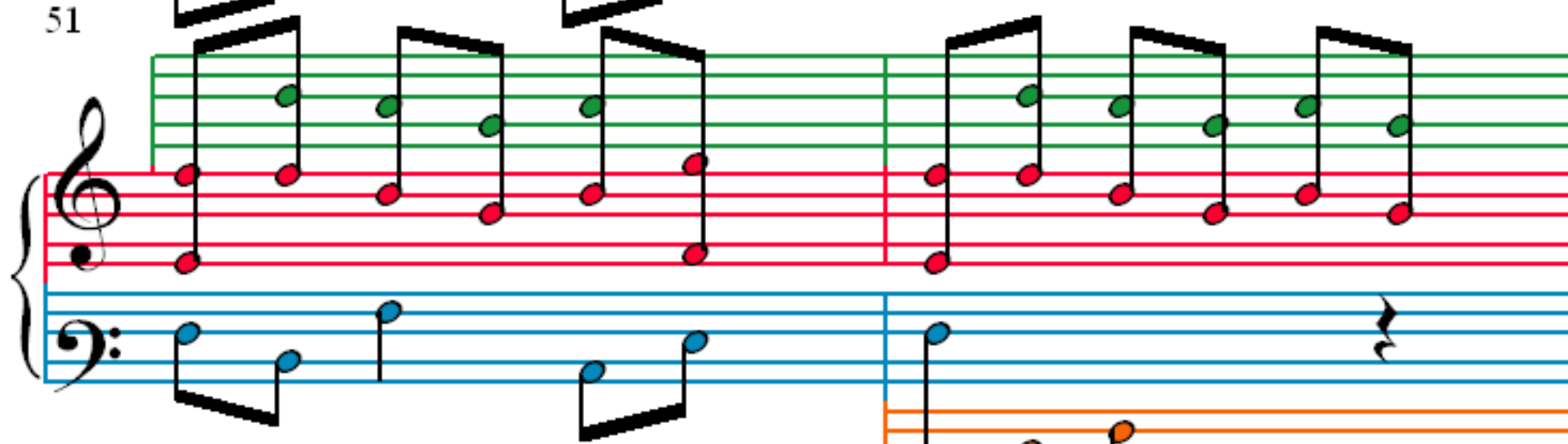
46

Measures 46-48: Treble clef (green line), Bass clef (blue line), and an orange line below the bass staff. Notes are colored: green for the top line, red for the middle lines, blue for the bottom line, and orange for the line below the bass staff.

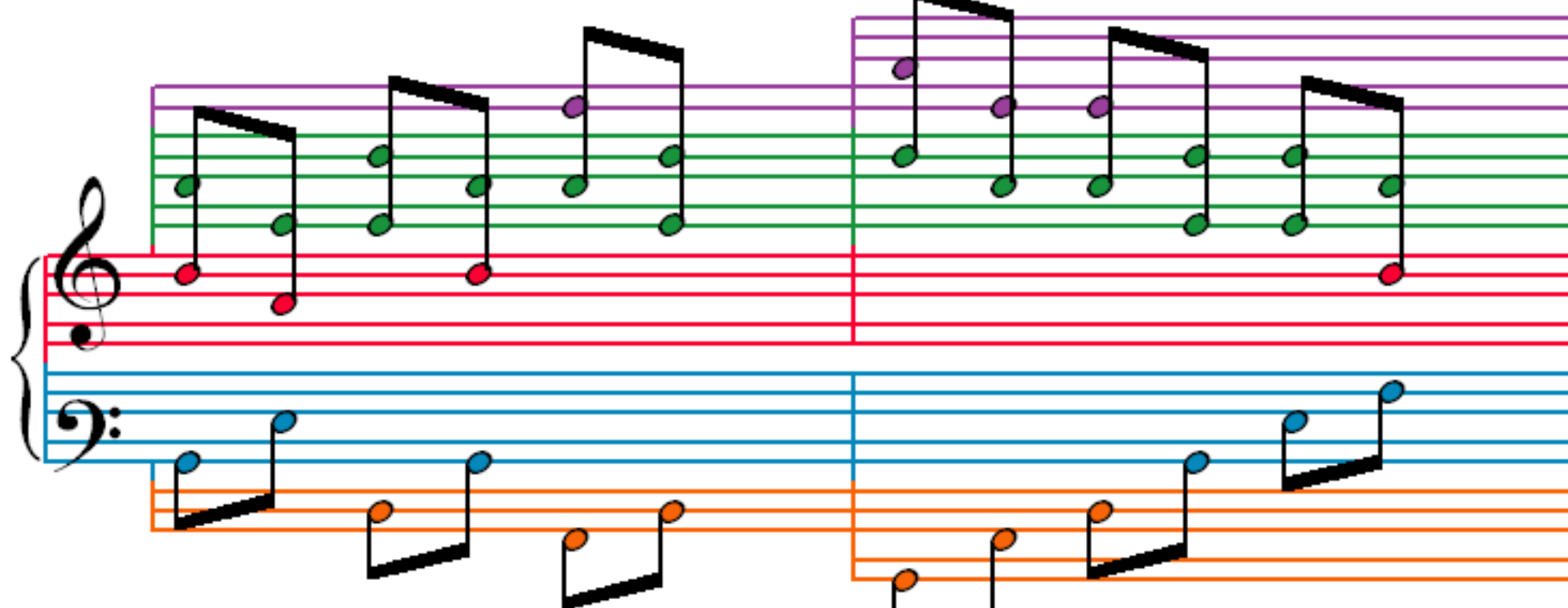
49



51



53



55

