

An den Mond D.296

F. Schubert (1797–1828)

1

4

7

10

The image displays a musical score for the song 'The Rose Tree'. The score is written in 3/4 time, indicated by the '3' over the '4' in the time signature. It consists of four systems of music, each with a treble and bass staff. The notes are color-coded: green for the melody in the treble staff, red for the accompaniment in the treble staff, and blue for the accompaniment in the bass staff. Bar lines are used to divide the music into measures. The first system starts with a treble clef and a key signature of one flat (B-flat). The second system begins with a measure rest in the treble staff. The third system has a measure rest in the bass staff. The fourth system has a measure rest in the bass staff. The score is numbered 1, 4, 7, and 10 at the beginning of each system.

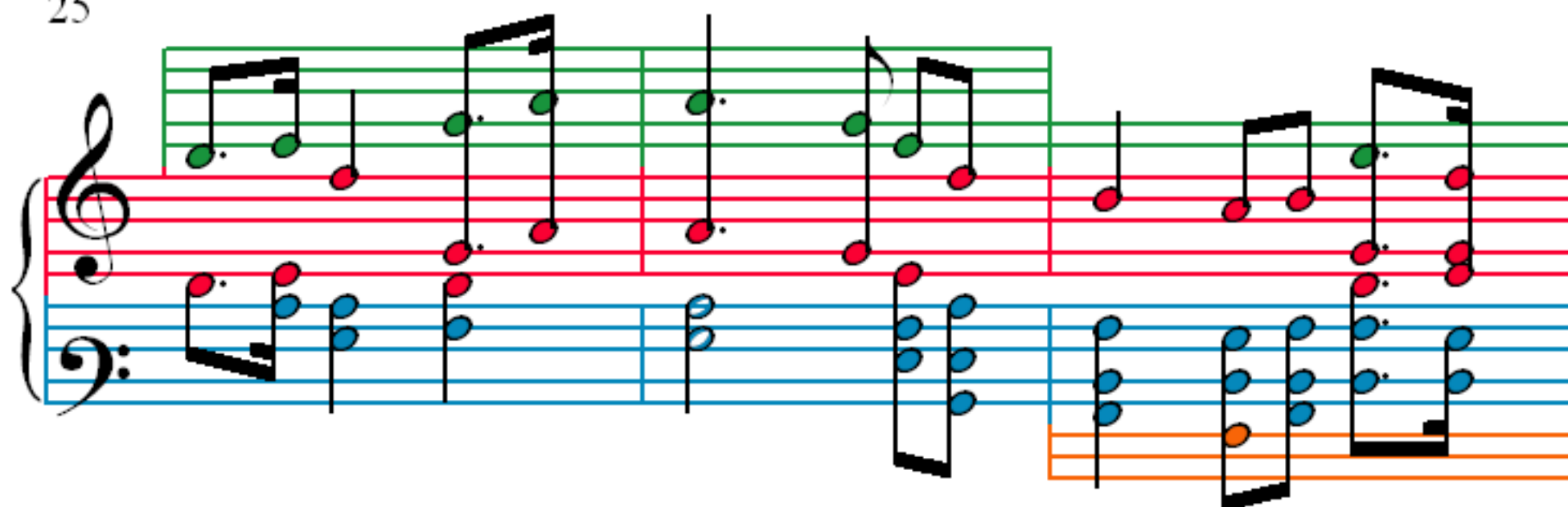
13

16

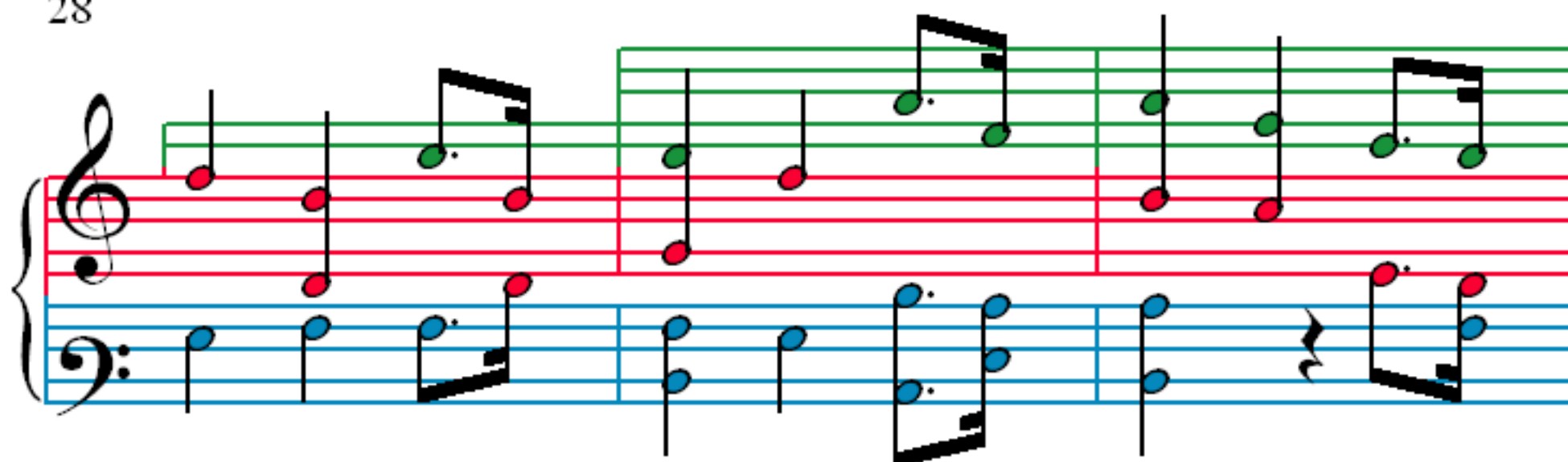
19

22

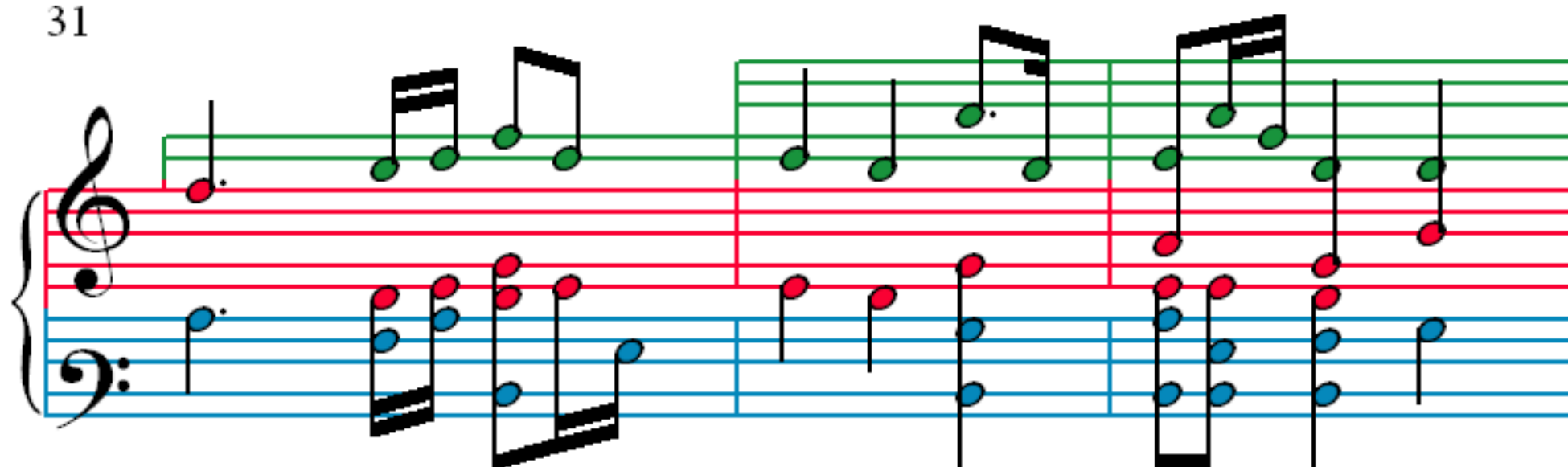
25



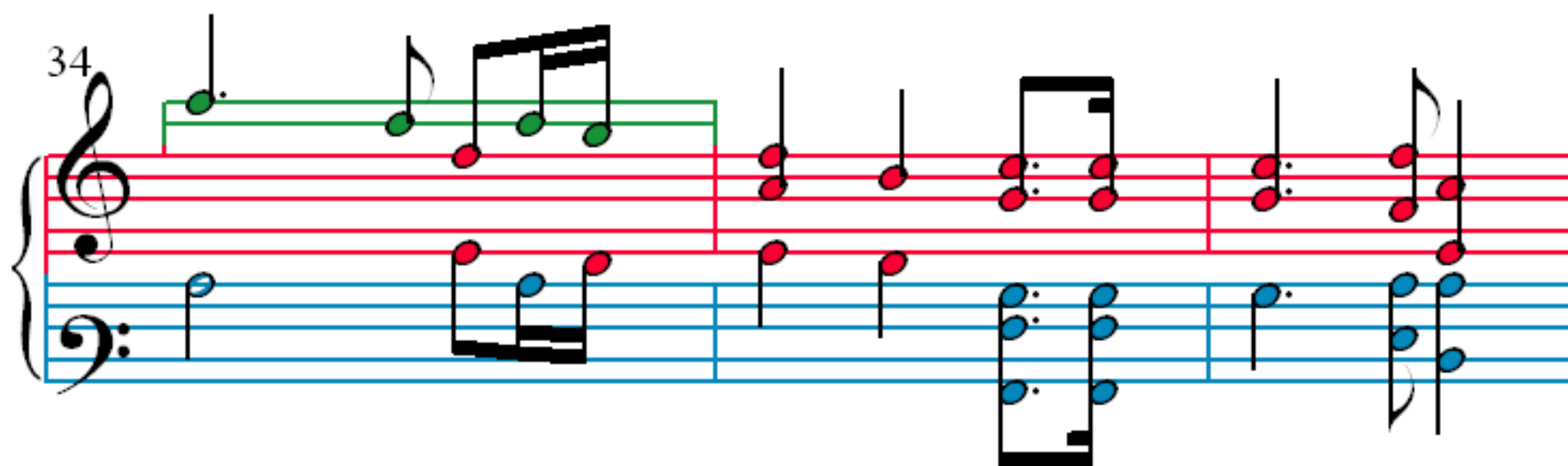
28



31



34



37

Measures 37-39 of the piece. The notation is for a piano accompaniment, featuring a treble and bass staff. The treble staff has a green line above it. The bass staff has a blue line below it. The notes are colored red and blue. A purple bracket highlights a measure in the treble staff.

40

Measures 40-42 of the piece. The notation is for a piano accompaniment, featuring a treble and bass staff. The treble staff has a green line above it. The bass staff has a blue line below it. The notes are colored red and blue. An orange bracket highlights a measure in the bass staff.

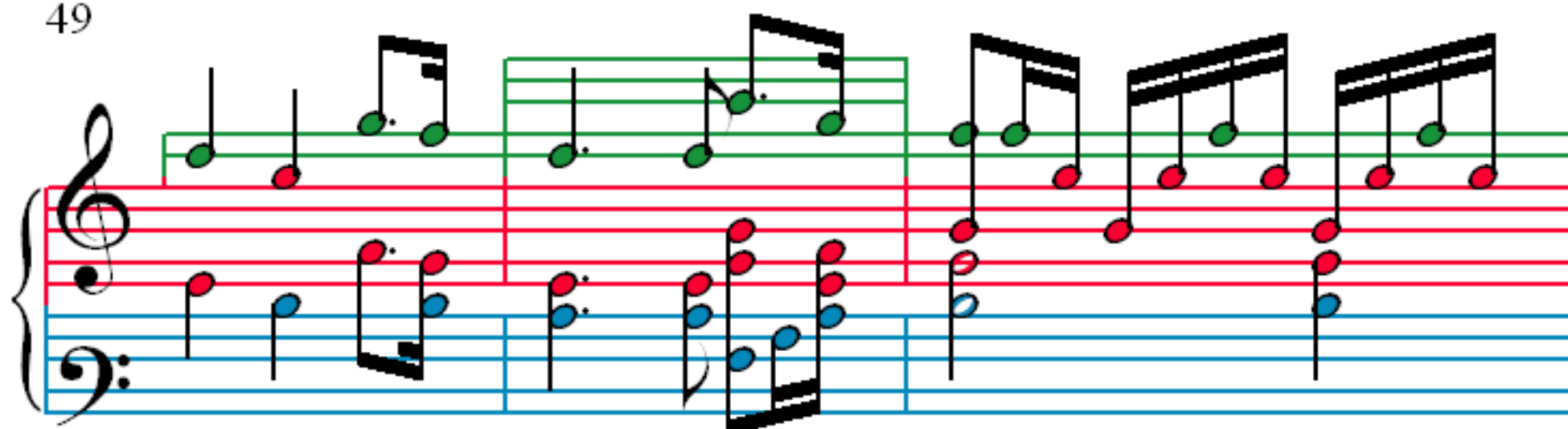
43

Measures 43-45 of the piece. The notation is for a piano accompaniment, featuring a treble and bass staff. The treble staff has a green line above it. The bass staff has a blue line below it. The notes are colored red and blue. An orange bracket highlights a measure in the bass staff.

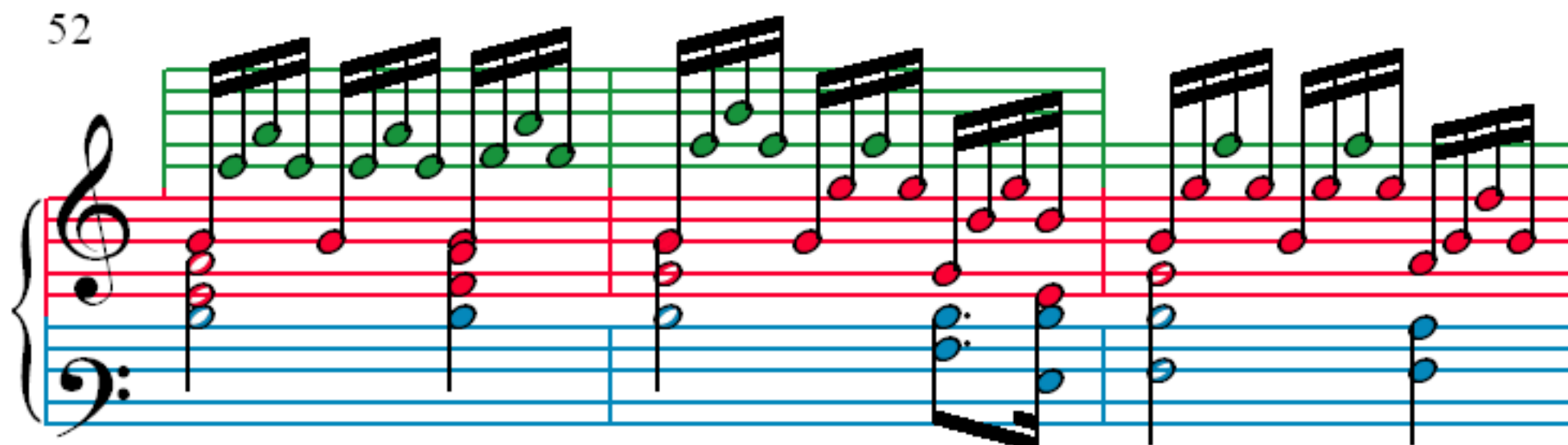
46

Measures 46-48 of the piece. The notation is for a piano accompaniment, featuring a treble and bass staff. The treble staff has a green line above it. The bass staff has a blue line below it. The notes are colored red and blue.

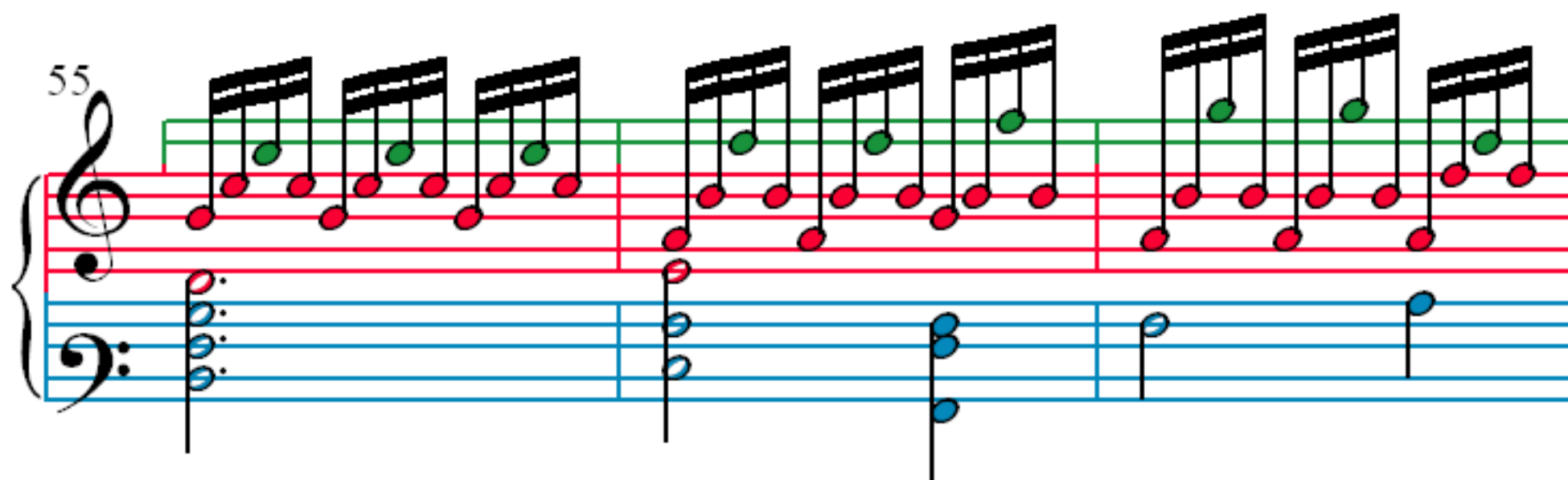
49



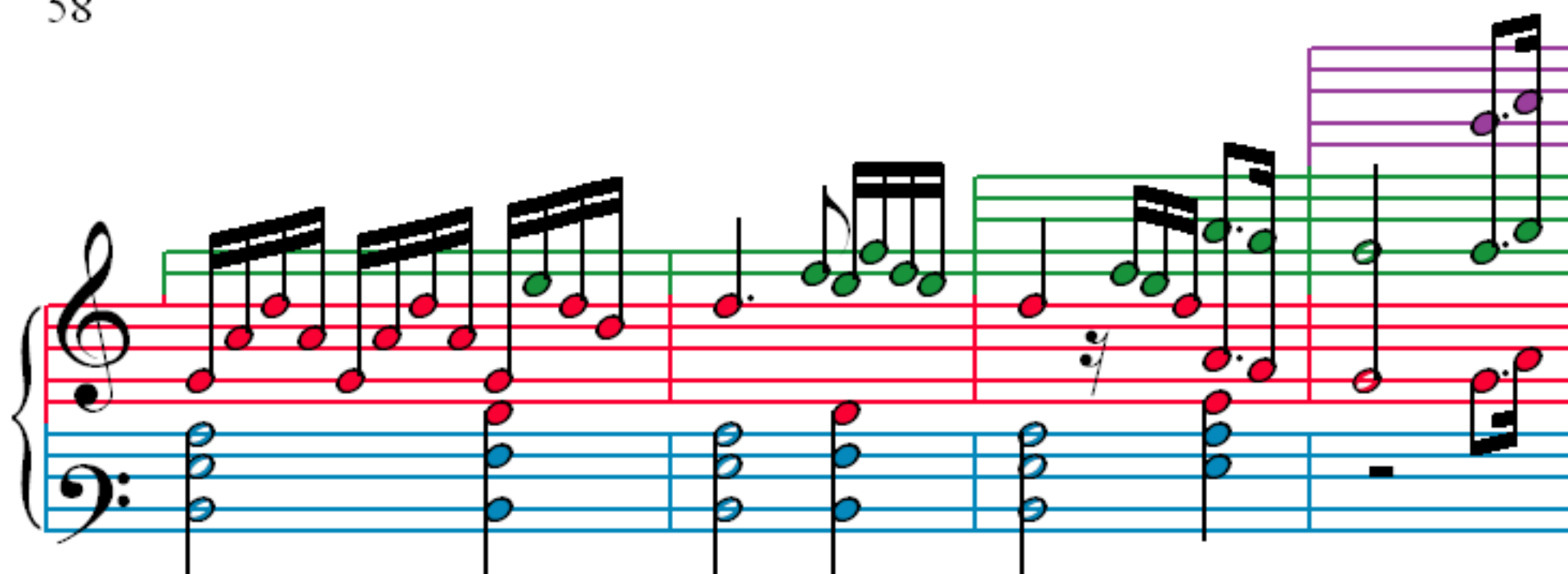
52



55



58



62

Measures 62-65 of the piece. The notation is for a piano accompaniment, featuring a treble and bass staff. The treble staff has a purple key signature and a green treble clef. The bass staff has a blue key signature and a blue bass clef. The music is written in a 4/4 time signature. The notes are color-coded: purple for the treble staff and blue for the bass staff. The melody in the treble staff consists of eighth and sixteenth notes, while the bass staff provides a harmonic accompaniment with chords and single notes.

66

Measures 66-69 of the piece. The notation continues from the previous system. The treble staff features a green treble clef and a purple key signature. The bass staff has a blue key signature and a blue bass clef. The music is written in a 4/4 time signature. The notes are color-coded: purple for the treble staff and blue for the bass staff. The melody in the treble staff consists of eighth and sixteenth notes, while the bass staff provides a harmonic accompaniment with chords and single notes.

70

Measures 70-73 of the piece. The notation continues from the previous system. The treble staff features a green treble clef and a purple key signature. The bass staff has a blue key signature and a blue bass clef. The music is written in a 4/4 time signature. The notes are color-coded: purple for the treble staff and blue for the bass staff. The melody in the treble staff consists of eighth and sixteenth notes, while the bass staff provides a harmonic accompaniment with chords and single notes.

74

Measures 74-77 of the piece. The notation continues from the previous system. The treble staff features a green treble clef and a purple key signature. The bass staff has a blue key signature and a blue bass clef. The music is written in a 4/4 time signature. The notes are color-coded: purple for the treble staff and blue for the bass staff. The melody in the treble staff consists of eighth and sixteenth notes, while the bass staff provides a harmonic accompaniment with chords and single notes.