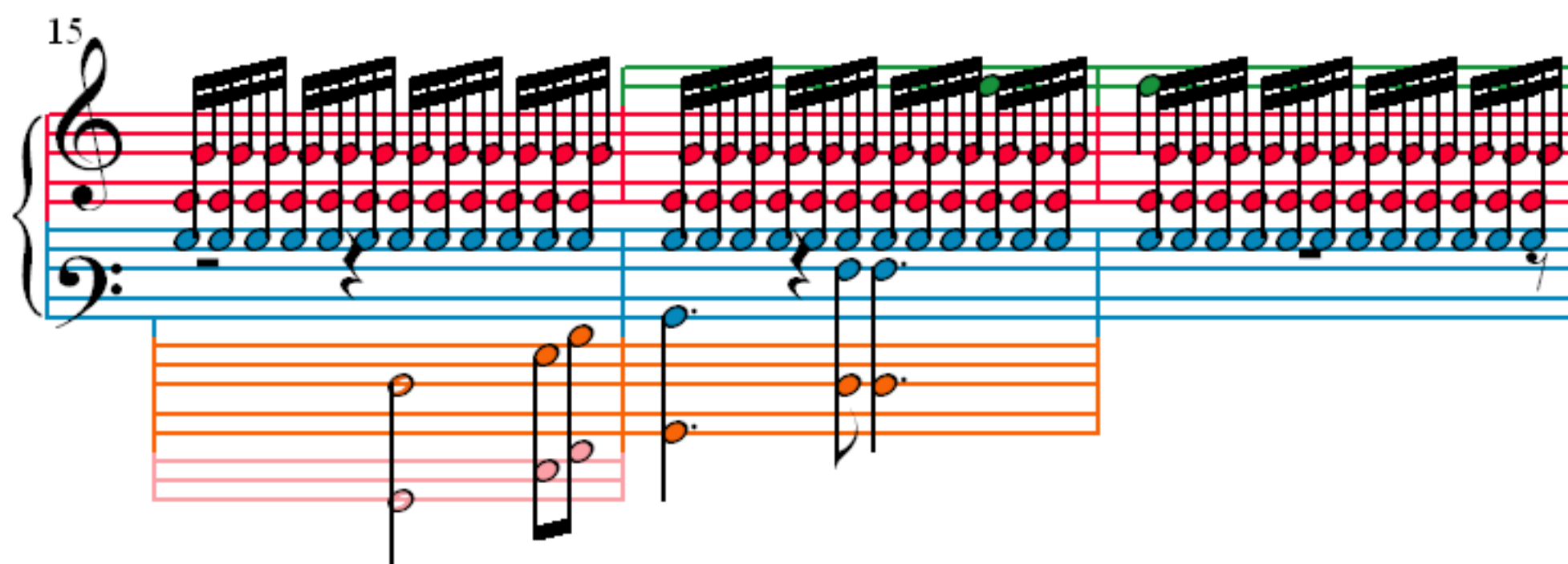
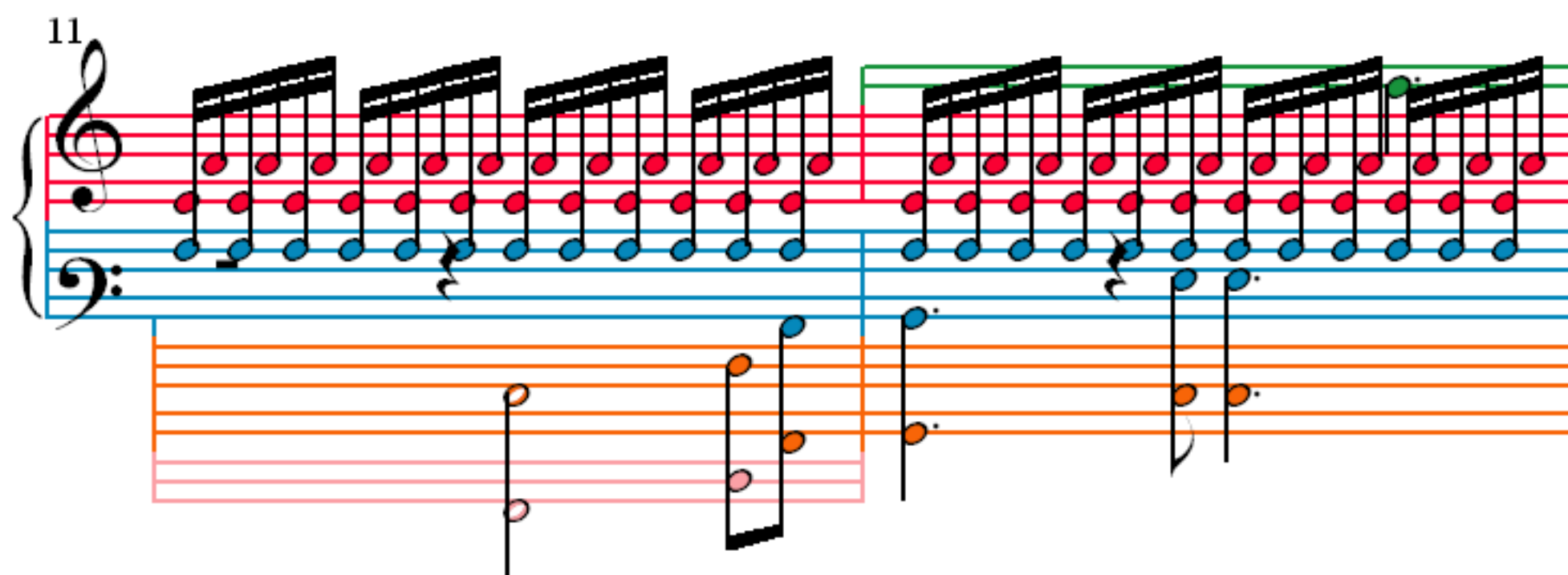


Die Junge Nonne

F. Schubert (1797–1828)

The musical score for 'Die Junge Nonne' is presented in a multi-colored notation format. It consists of four systems, each containing a piano accompaniment and a vocal line. The piano part is written in 12/8 time, with the right hand playing a continuous eighth-note pattern and the left hand providing a steady bass line. The vocal line is written in a single staff, with notes colored in various shades of red, blue, orange, and green. The score is divided into measures by vertical bar lines, and the systems are numbered 1, 2, 4, and 6. The notation is highly detailed, with many notes and rests visible across the staves.



18

Measures 18-19. The right hand plays a continuous sixteenth-note arpeggiated pattern. The left hand has a whole rest in measure 18 and a half note in measure 19. A separate staff shows a half note and a quarter note.

20

Measures 20-21. The right hand continues the sixteenth-note arpeggiated pattern. The left hand has a half note in measure 20 and a half note in measure 21. A separate staff shows a half note and a quarter note.

22

Measures 22-23. The right hand continues the sixteenth-note arpeggiated pattern. The left hand has a whole rest in measure 22 and a half note in measure 23. A separate staff shows a half note and a quarter note.

24

Measures 24-25. The right hand continues the sixteenth-note arpeggiated pattern. The left hand has a whole rest in measure 24 and a half note in measure 25. A separate staff shows a half note and a quarter note.

27

29

31

33

36

Measures 36-37. The system includes a grand staff with treble and bass clefs, and a lower staff with three empty staves. The treble staff has a green box highlighting the first measure. The bass staff has blue notes. The lower staff has orange and pink notes.

38

Measures 38-39. The system includes a grand staff with treble and bass clefs, and a lower staff with three empty staves. The treble staff has a green box highlighting the first measure. The bass staff has blue notes. The lower staff has orange and pink notes.

40

Measures 40-41. The system includes a grand staff with treble and bass clefs, and a lower staff with three empty staves. The treble staff has a green box highlighting the first measure. The bass staff has blue notes. The lower staff has orange and pink notes.

42

Measures 42-43. The system includes a grand staff with treble and bass clefs, and a lower staff with three empty staves. The treble staff has a green box highlighting the first measure. The bass staff has blue notes. The lower staff has orange and pink notes.

45

47

49

51

54

56

58

60

63

Measures 63-64. Treble clef: continuous sixteenth-note arpeggiated pattern. Bass clef: simple harmonic accompaniment. Third staff: empty.

65

Measures 65-66. Treble clef: continuous sixteenth-note arpeggiated pattern. Bass clef: simple harmonic accompaniment. Third staff: contains notes in measures 65 and 66.

67

Measures 67-68. Treble clef: continuous sixteenth-note arpeggiated pattern. Bass clef: simple harmonic accompaniment. Third staff: contains notes in measures 67 and 68.

69

Measures 69-71. Treble clef: continuous sixteenth-note arpeggiated pattern. Bass clef: simple harmonic accompaniment. Third staff: contains notes in measures 69 and 70.

72

Measures 72 and 73 of the musical score. The right hand (treble clef) features a complex, rapid sixteenth-note pattern. The left hand (bass clef) has a simple accompaniment of two notes per measure. The notation is color-coded: red for the right hand, blue for the left hand, and orange for the bass line. A green box highlights the first measure of each system.

74

Measures 74 and 75 of the musical score. The right hand continues with the rapid sixteenth-note pattern. The left hand accompaniment remains simple. The notation is color-coded: red for the right hand, blue for the left hand, and orange for the bass line. A green box highlights the first measure of each system.

76

Measures 76, 77, and 78 of the musical score. The right hand continues with the rapid sixteenth-note pattern. The left hand accompaniment remains simple. The notation is color-coded: red for the right hand, blue for the left hand, and orange for the bass line. A green box highlights the first measure of each system.

79

Measures 79, 80, and 81 of the musical score. The right hand continues with the rapid sixteenth-note pattern. The left hand accompaniment remains simple. The notation is color-coded: red for the right hand, blue for the left hand, and orange for the bass line. A green box highlights the first measure of each system.

82

85

88

91