

Einsamkeit

F. Schubert (1797–1828)

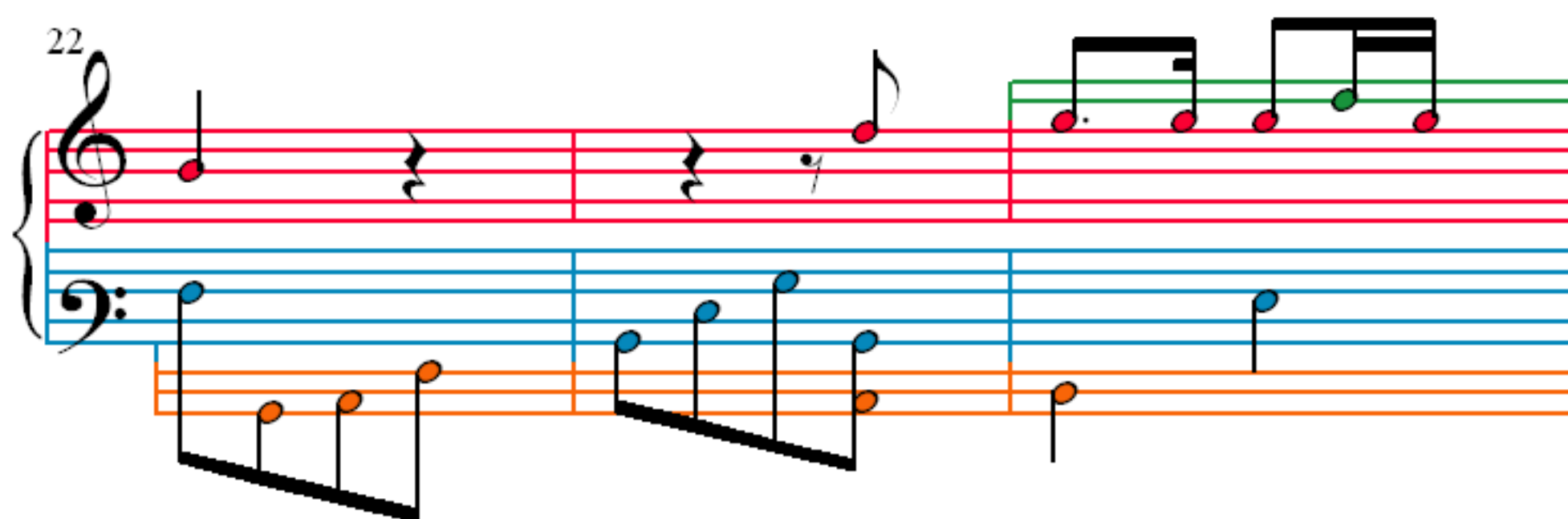
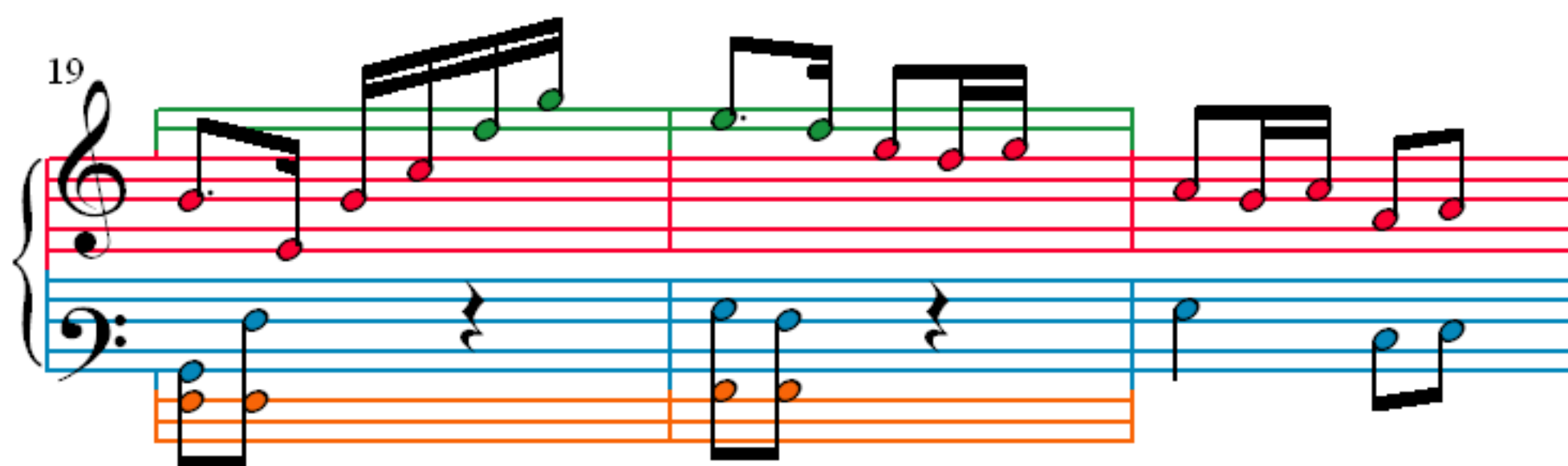
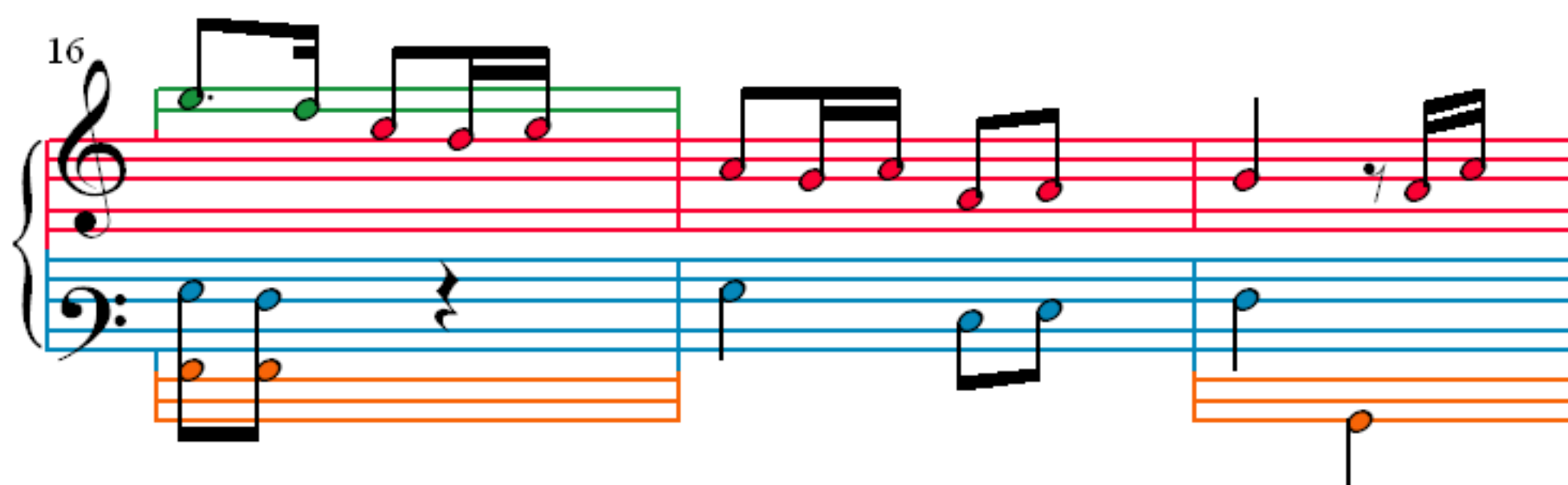
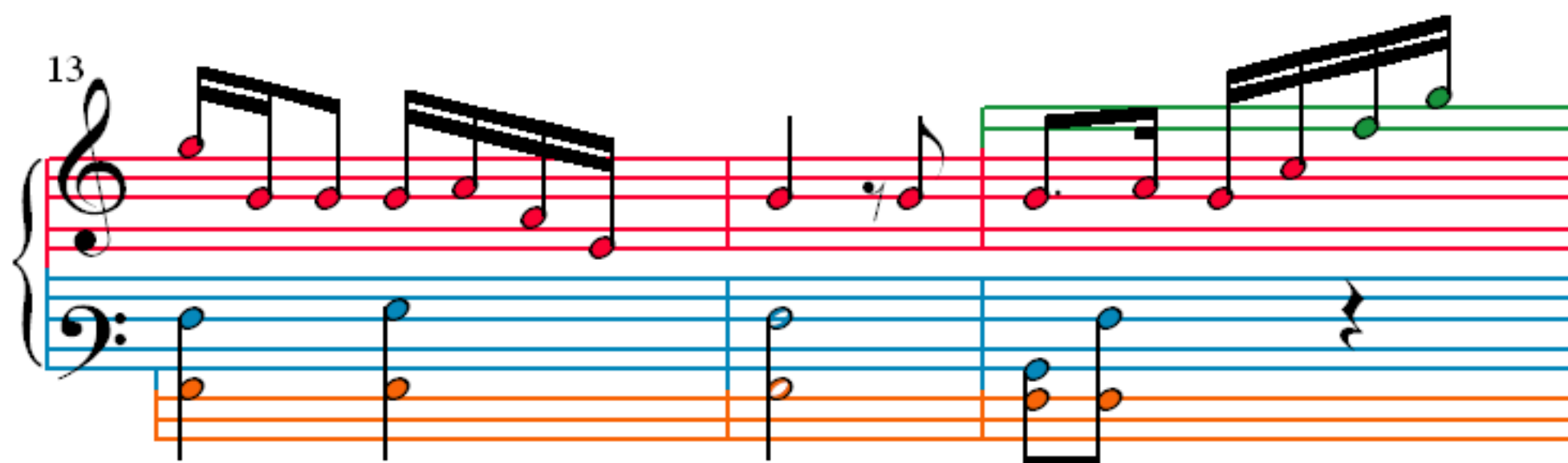
1 F. Schubert (1797–1828)

The image shows the first measure of a musical score for 'Die Forelle' by Franz Schubert. It is written for piano in 2/4 time. The treble clef staff is empty, with a red line indicating the melody. The bass clef staff contains a continuous eighth-note accompaniment pattern: a blue eighth note followed by an orange eighth note, repeated. The first measure is marked with a '1' at the beginning.

[illegible]

10

Musical score for 'The Rose Tree' in G major, 3/4 time. The score is written for three parts: Treble (red staves), Bass (blue staves), and a lower part (orange staves). The Treble part features a melody with a double bar line and a repeat sign. The Bass part provides a harmonic accompaniment. The lower part (orange staves) is a simplified version of the melody, likely for a child's part.



25

28

31

34

37

40

43

46