

11. Sicilienne

Album pour la jeunesse

R. Schumann (1810–1856)

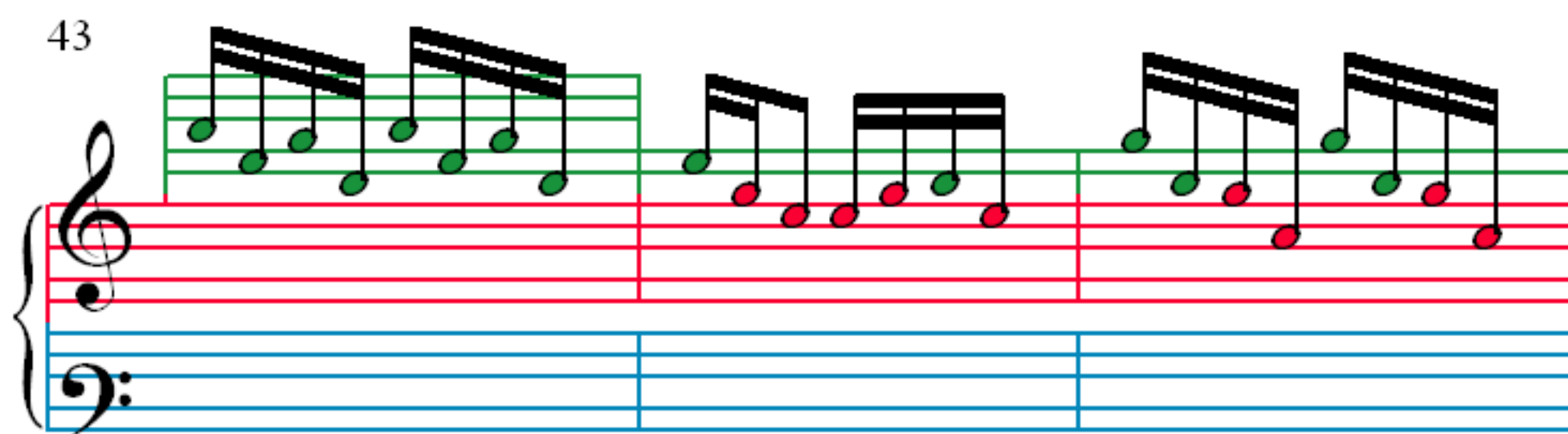
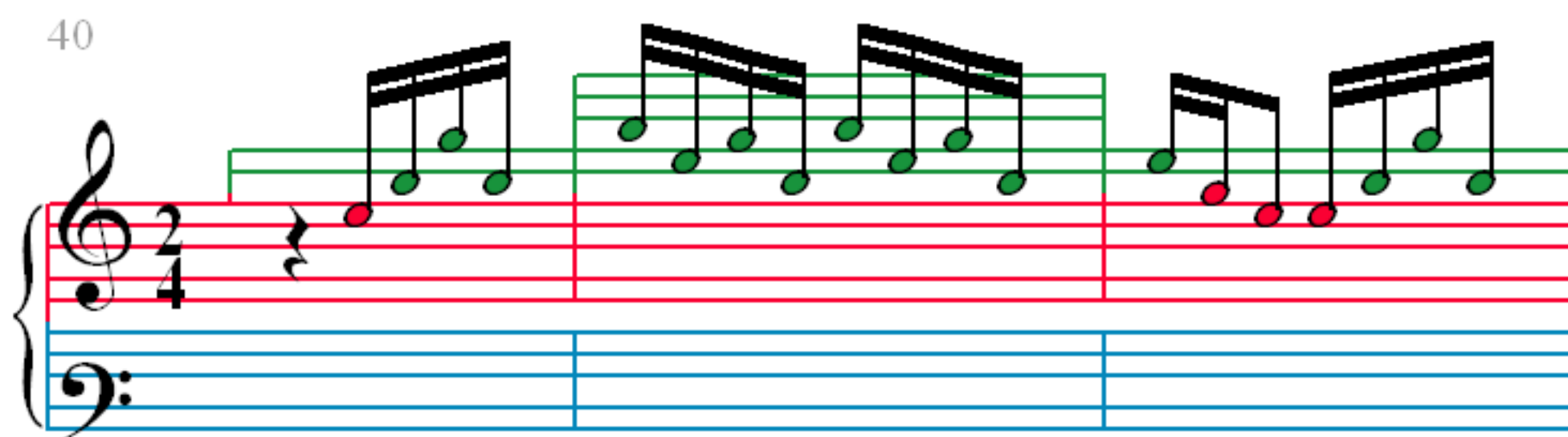
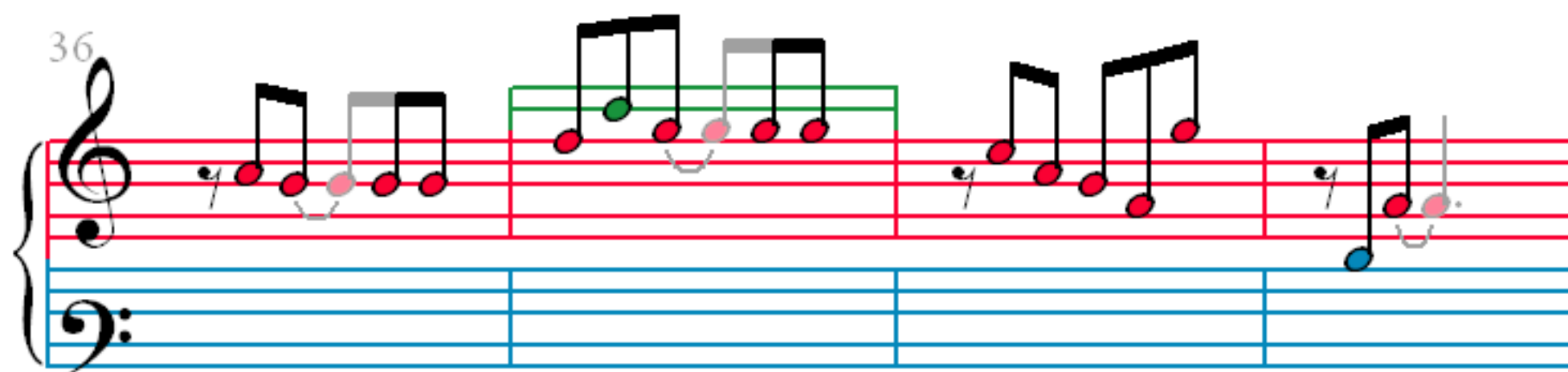
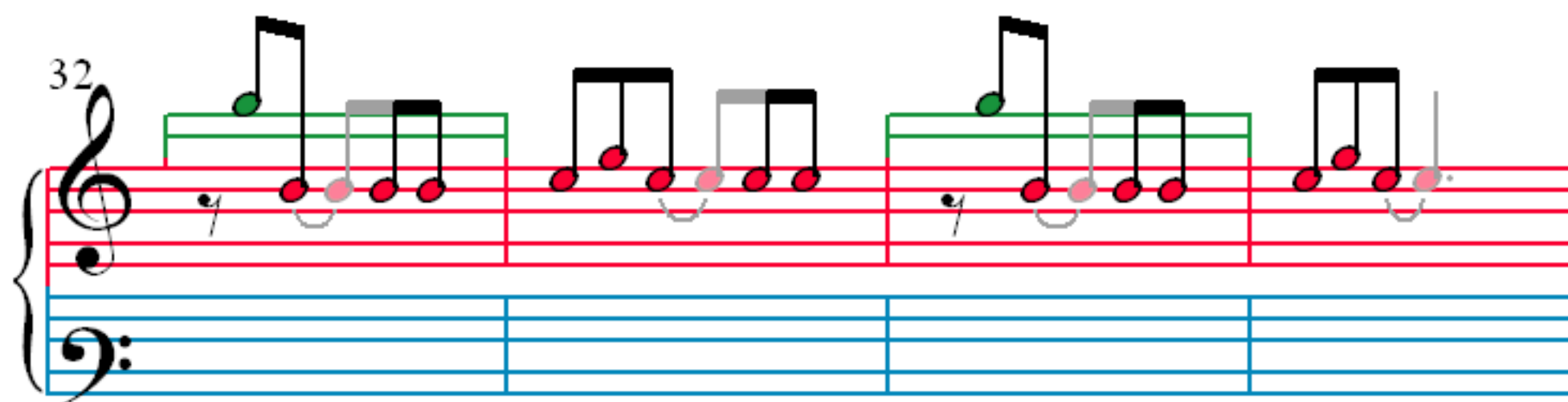
A musical score for the song 'The Rose Tree'. The score is written for a piano, with a treble clef and a bass clef. The key signature is one flat (B-flat), and the time signature is 4/4. The melody is in the treble clef, and the accompaniment is in the bass clef. The score is divided into four measures. The first measure contains a treble clef, a key signature of one flat, and a time signature of 4/4. The melody begins with a quarter note G4, followed by a quarter note A4, a quarter note Bb4, and a quarter note C5. The bass line consists of a half note G3 and a half note F3. The second measure contains a quarter note D5, a quarter note C5, a quarter note Bb4, and a quarter note A4. The bass line consists of a half note E3 and a half note D3. The third measure contains a quarter note G4, a quarter note A4, a quarter note Bb4, and a quarter note C5. The bass line consists of a half note G3 and a half note F3. The fourth measure contains a quarter note D5, a quarter note C5, a quarter note Bb4, and a quarter note A4. The bass line consists of a half note E3 and a half note D3. The score ends with a double bar line.

16

20

24

28



46

49

52

56

60

Measures 60-63: Treble clef staff with a key signature of one flat. Measures 60-63 show a sequence of eighth and sixteenth notes, with some notes highlighted in green and others in red. The bass clef staff is empty.

64

Measures 64-67: Treble clef staff continues the sequence of eighth and sixteenth notes, with some notes highlighted in green and others in red. The bass clef staff is empty.

68

Measures 68-71: Treble clef staff continues the sequence of eighth and sixteenth notes, with some notes highlighted in green and others in red. The bass clef staff is empty.

72

Measures 72-75: Treble clef staff continues the sequence of eighth and sixteenth notes, with some notes highlighted in green and others in red. The bass clef staff is empty.