

12. Le Père Fouettard

Album pour la jeunesse

R. Schumann (1810–1856)

1

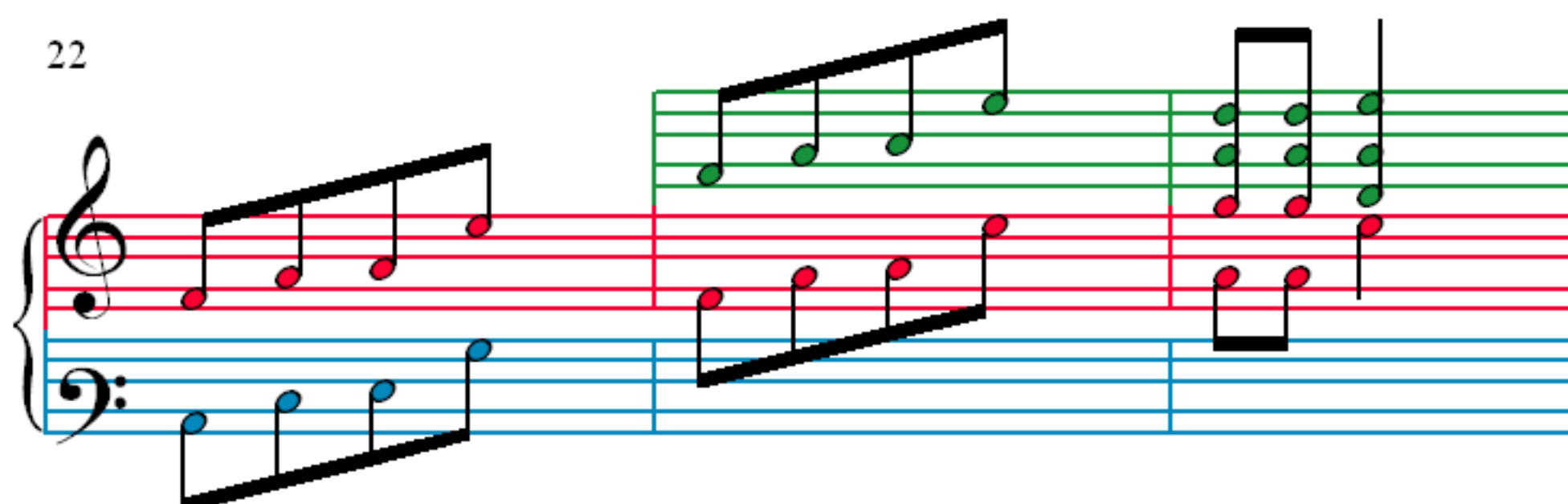
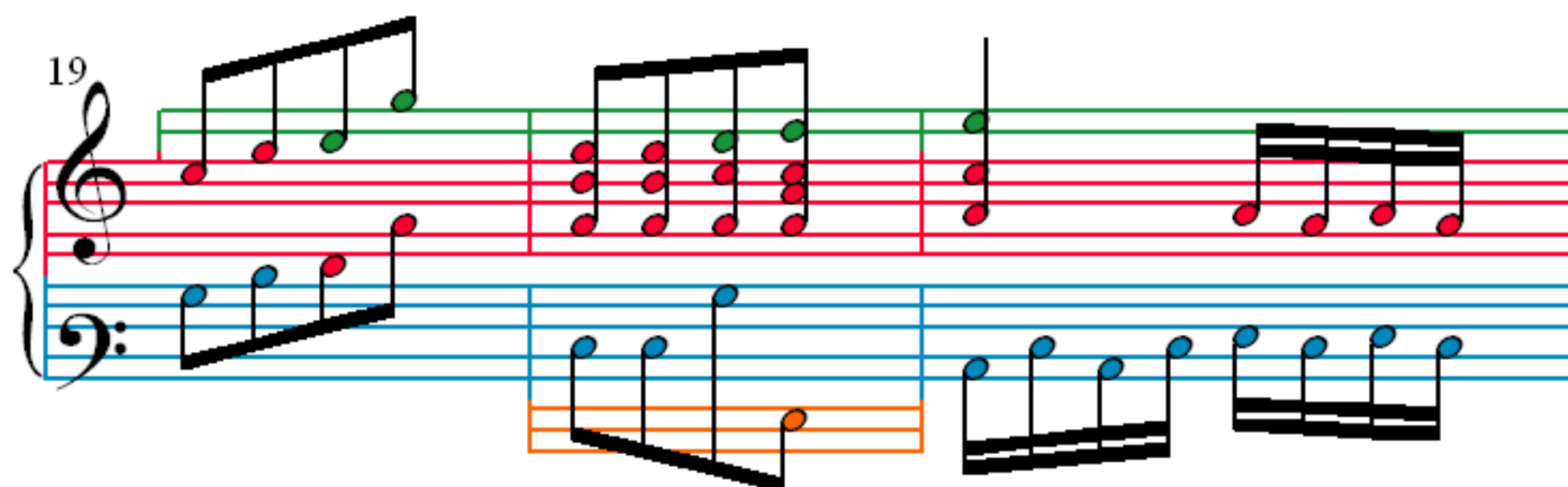
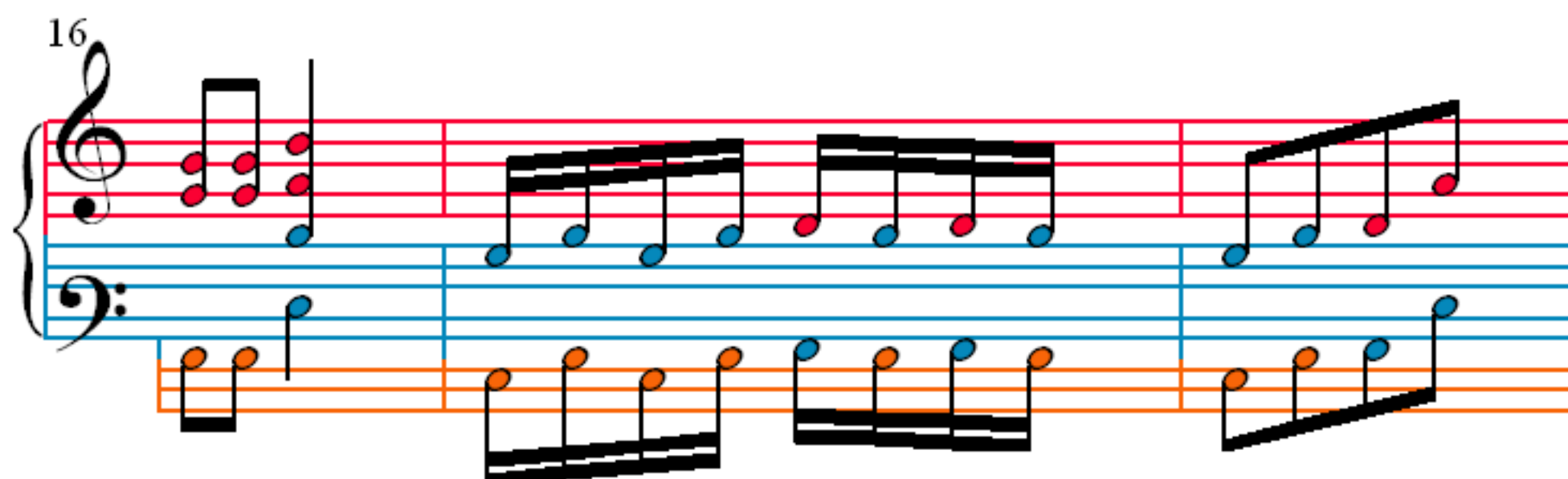
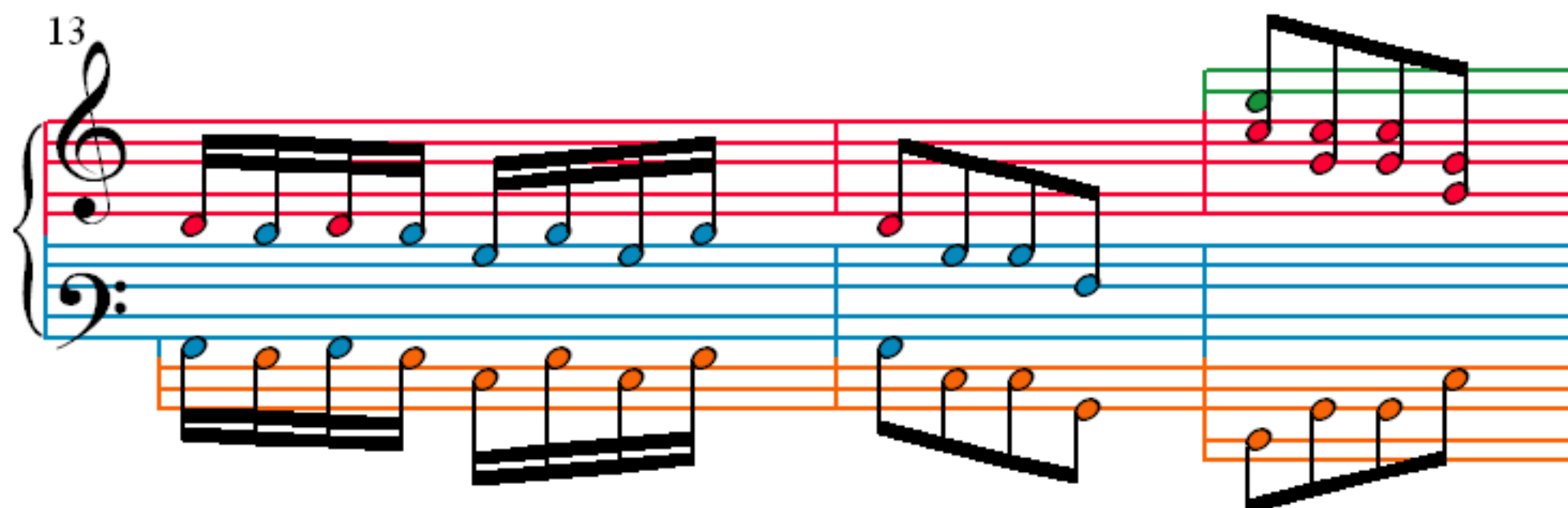
4

7

10

Notation Format © 2012, R. Ambrose.

This image displays the first ten measures of the piano piece 'Le Père Fouettard' from Robert Schumann's 'Album pour la jeunesse'. The score is written for piano in 2/4 time, featuring a treble and bass staff joined by a brace. The notation includes various musical symbols such as treble and bass clefs, a 2/4 time signature, and a key signature of one sharp (F#). The notes are color-coded: blue for the right hand and orange for the left hand. The first measure is marked with a '1', the fourth measure with a '4', the seventh measure with a '7', and the tenth measure with a '10'. The score is presented on a white background with red and blue horizontal lines for the staves. The notes are connected by stems, and some are grouped with beams. The piece is in a simple, child-friendly style, characteristic of Schumann's 'Album pour la jeunesse'.



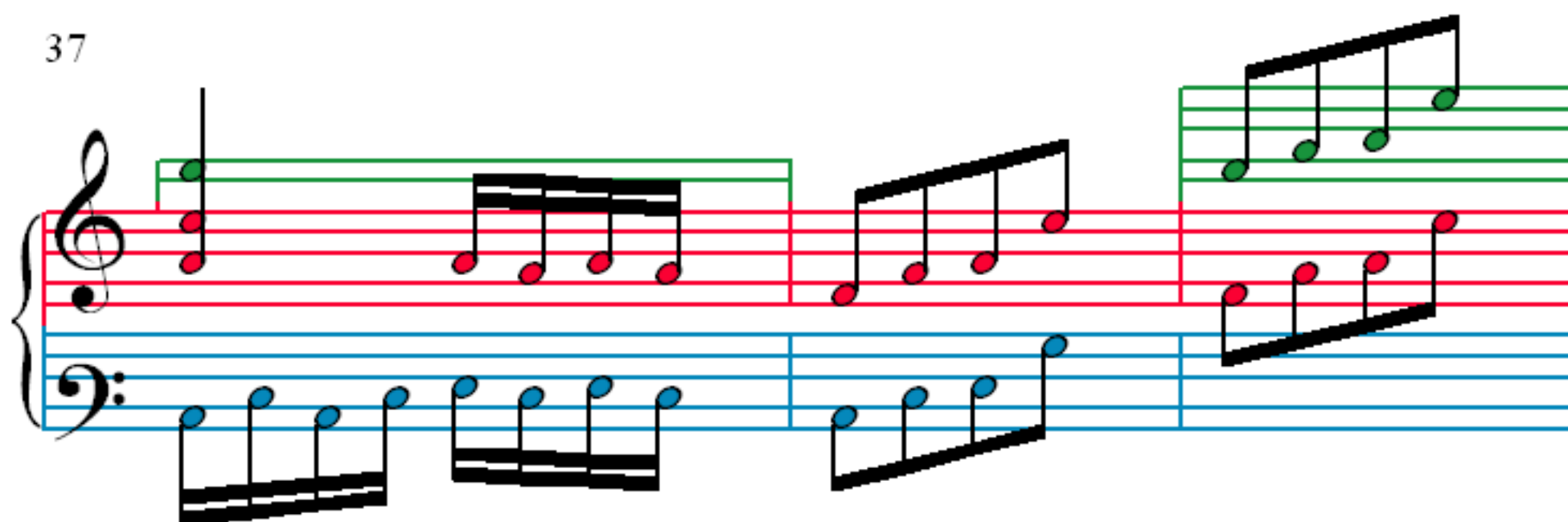
25

28

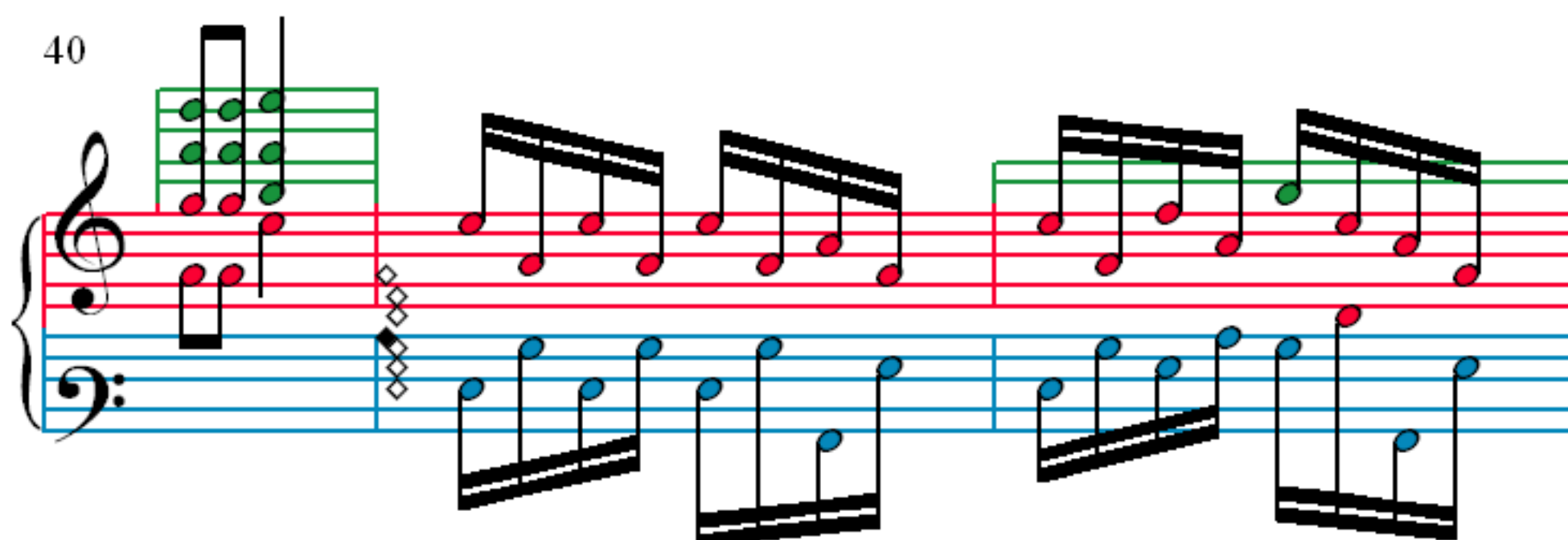
31

34

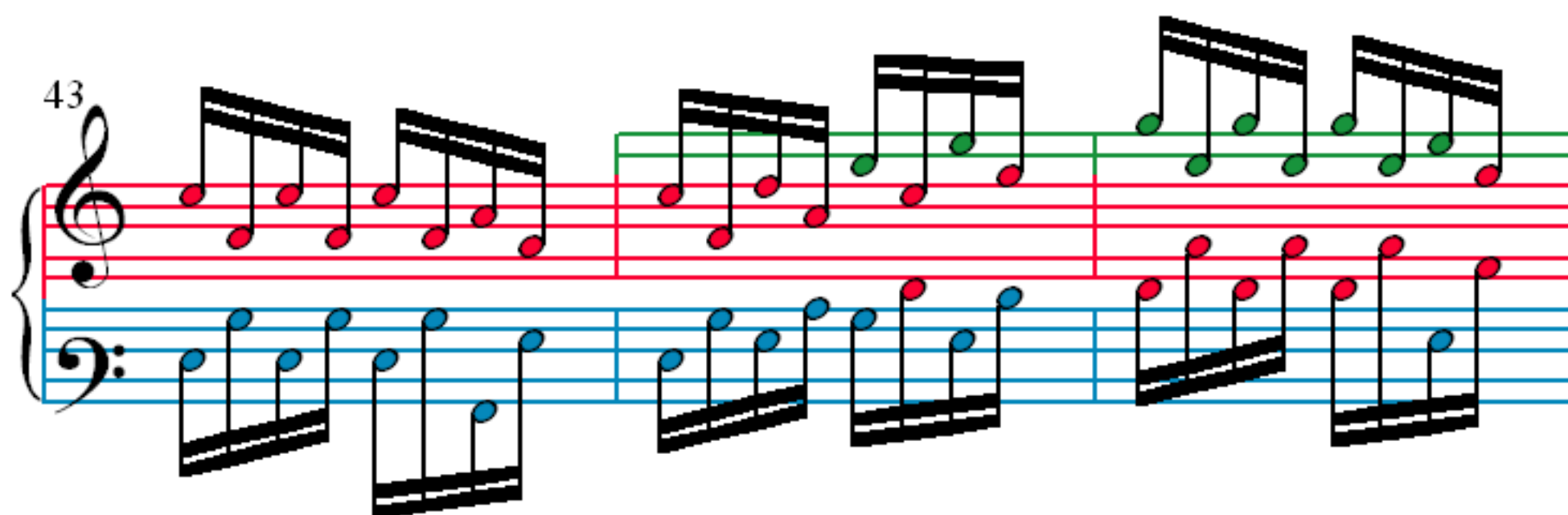
37



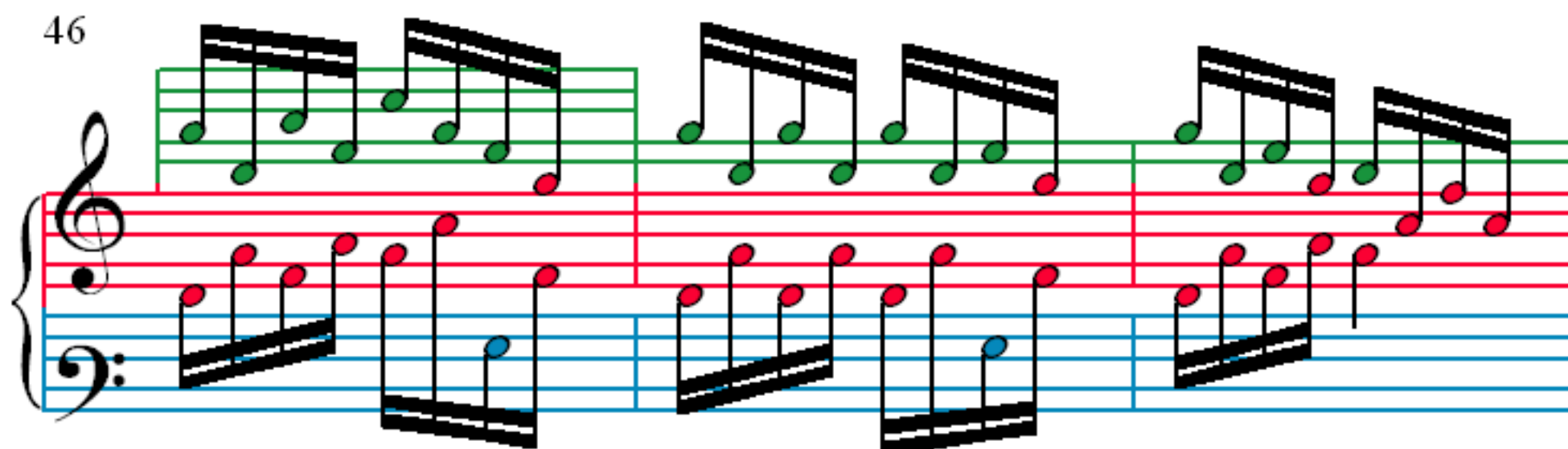
40



43



46



49

52

55

58

61

Measures 61-63. Treble clef has red notes, bass clef has blue notes. Measure 61 has an orange staff below the bass line.

64

Measures 64-66. Treble clef has red notes, bass clef has blue notes. Measure 64 has a green staff above the treble line.

67

Measures 67-69. Treble clef has red notes, bass clef has blue notes. Measure 67 has a green staff above the treble line.

70

Measures 70-72. Treble clef has red notes, bass clef has blue notes. Measure 70 has a green staff above the treble line.

73

Measures 73-75. Treble clef: Red eighth-note chords. Bass clef: Orange half notes.

76

Measures 76-78. Treble clef: Red eighth-note chords. Bass clef: Blue half notes.

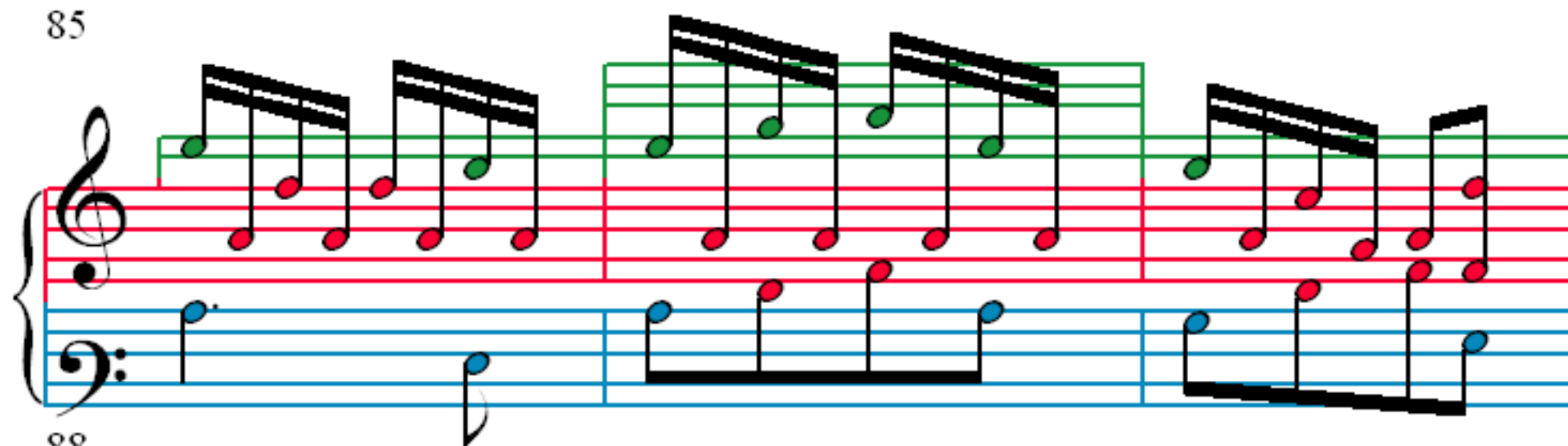
79

Measures 79-81. Treble clef: Red eighth-note chords. Bass clef: Blue half notes.

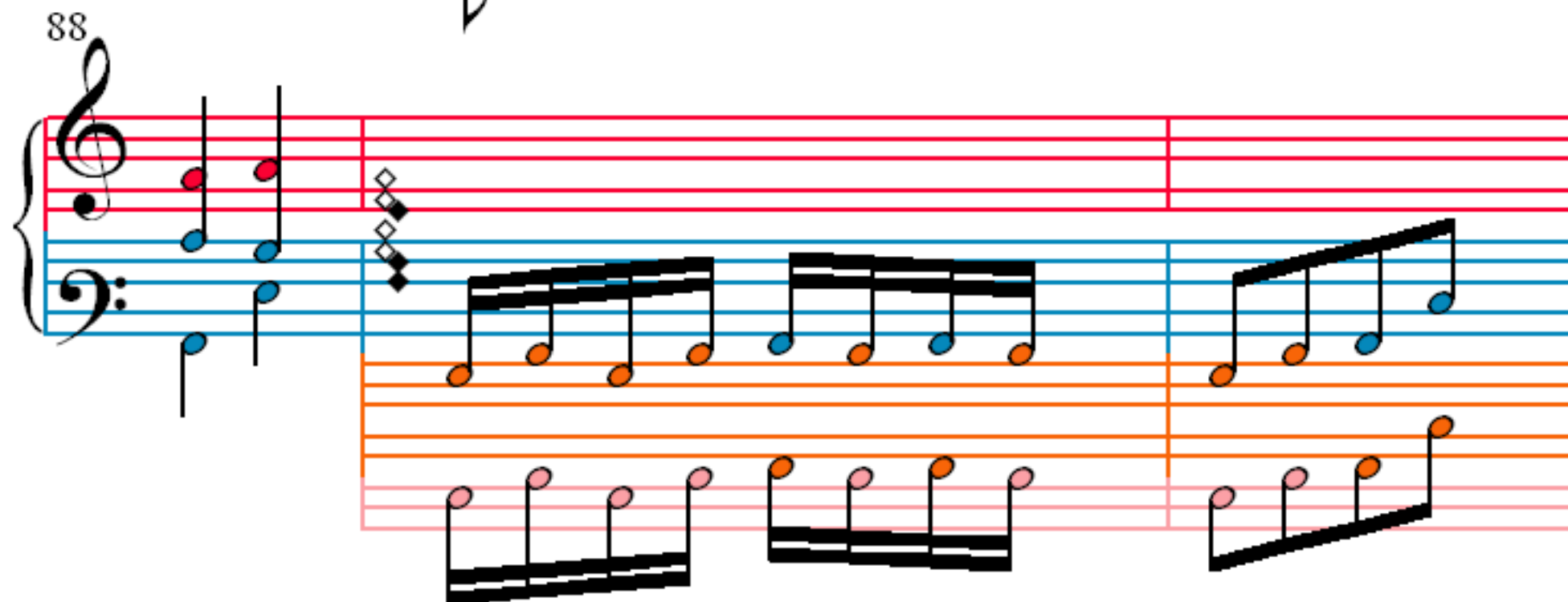
82

Measures 82-84. Treble clef: Red eighth-note chords. Bass clef: Blue half notes.

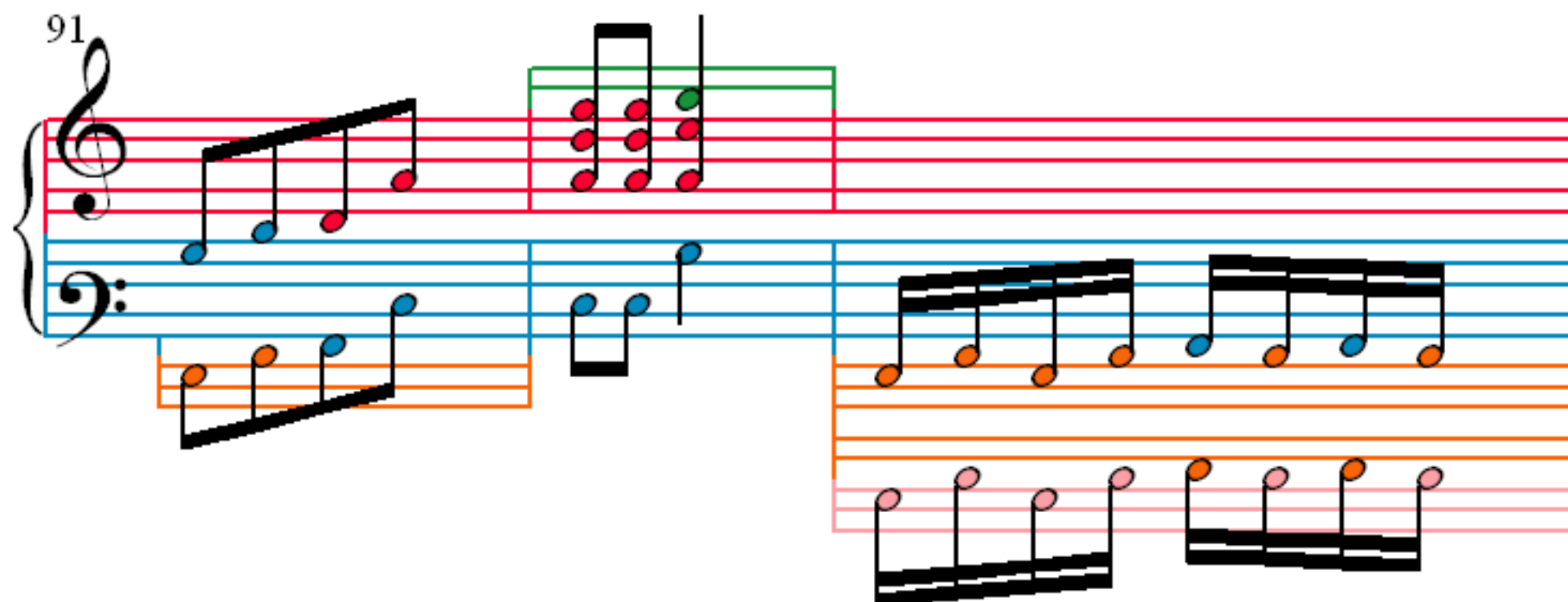
85



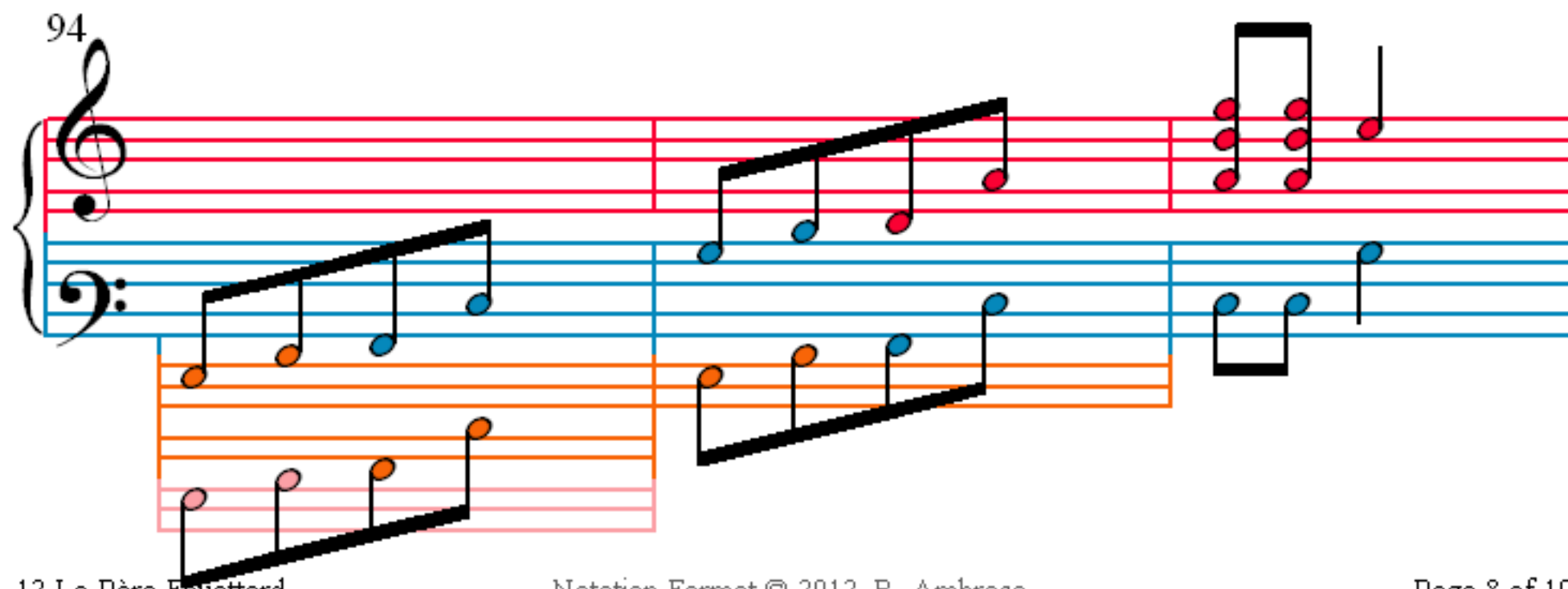
88



91



94



97

99

101

103

105

Measures 105-106. Treble clef: Measure 105 has a melodic line with blue notes (F4, G4, A4, B4) and red notes (C5, B4, A4, G4). Measure 106 continues with blue notes (F4, E4, D4, C4) and red notes (B3, A3, G3, F3). Bass clef: Measure 105 has a supporting line with orange notes (C3, D3, E3, F3) and blue notes (G3, A3, B3, C4). Measure 106 continues with orange notes (B2, A2, G2, F2) and blue notes (E2, D2, C2, B1).

107

Measures 107-108. Treble clef: Measure 107 has a melodic line with green notes (F4, G4, A4, B4) and red notes (C5, B4, A4, G4). Measure 108 continues with green notes (F4, E4, D4, C4) and red notes (B3, A3, G3, F3). Bass clef: Measure 107 has a supporting line with blue notes (C3, D3, E3, F3) and orange notes (G3, A3, B3, C4). Measure 108 continues with blue notes (B2, A2, G2, F2) and orange notes (E2, D2, C2, B1).

109

Measures 109-110. Treble clef: Measure 109 has a melodic line with green notes (F4, G4, A4, B4) and red notes (C5, B4, A4, G4). Measure 110 continues with green notes (F4, E4, D4, C4) and red notes (B3, A3, G3, F3). Bass clef: Measure 109 has a supporting line with blue notes (C3, D3, E3, F3) and orange notes (G3, A3, B3, C4). Measure 110 continues with blue notes (B2, A2, G2, F2) and orange notes (E2, D2, C2, B1).

111

Measures 111-112. Treble clef: Measure 111 has a melodic line with green notes (F4, G4, A4, B4) and red notes (C5, B4, A4, G4). Measure 112 continues with green notes (F4, E4, D4, C4) and red notes (B3, A3, G3, F3). Bass clef: Measure 111 has a supporting line with blue notes (C3, D3, E3, F3) and orange notes (G3, A3, B3, C4). Measure 112 continues with blue notes (B2, A2, G2, F2) and orange notes (E2, D2, C2, B1).