

13. Mai, cher Mai

Album pour la jeunesse

R. Schumann (1810–1856)

1

Measures 1-3 of the piece. The treble clef staff is in 2/4 time, with a key signature of one sharp (F#). The melody consists of eighth and sixteenth notes, with a repeat sign over measures 1 and 2. The bass clef staff is empty. A dashed circle highlights the first two notes of measure 3 in the treble staff.

4

Measures 4-6 of the piece. The treble clef staff continues the melody with eighth and sixteenth notes, with a repeat sign over measures 5 and 6. The bass clef staff is empty. A dashed circle highlights the first two notes of measure 4 in the treble staff.

7

Measures 7-9 of the piece. The treble clef staff continues the melody with eighth and sixteenth notes, with a repeat sign over measures 8 and 9. The bass clef staff is empty.

10

Measures 10-12 of the piece. The treble clef staff continues the melody with eighth and sixteenth notes, with a repeat sign over measures 11 and 12. The bass clef staff is empty. A dashed circle highlights the first two notes of measure 10 in the treble staff.

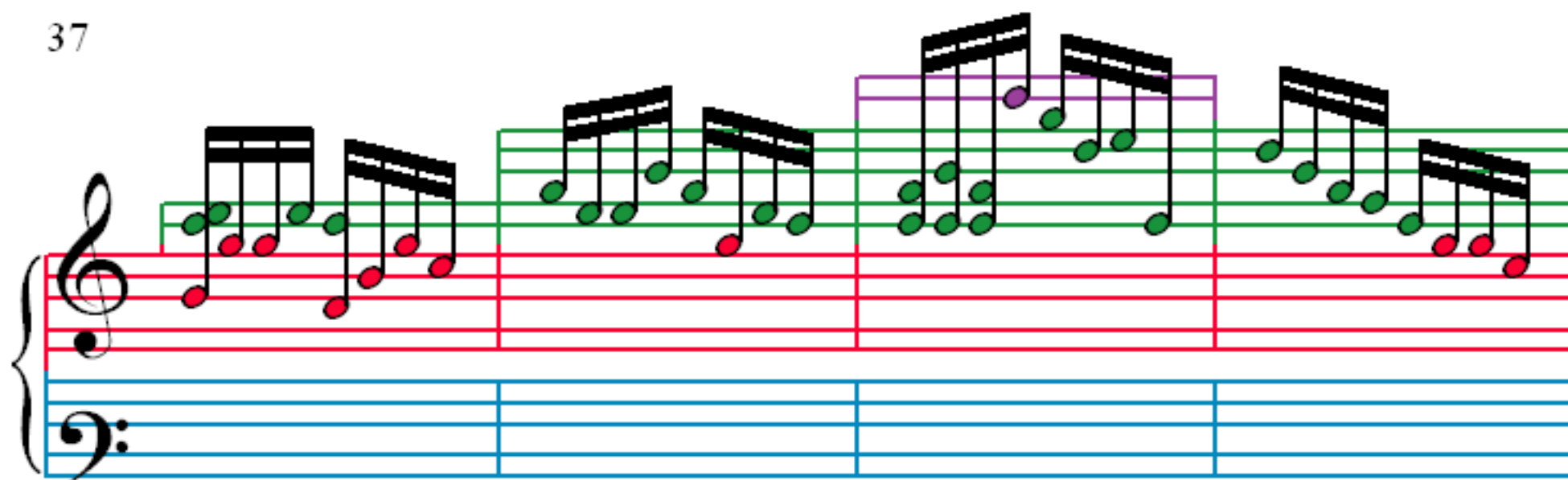
13

16

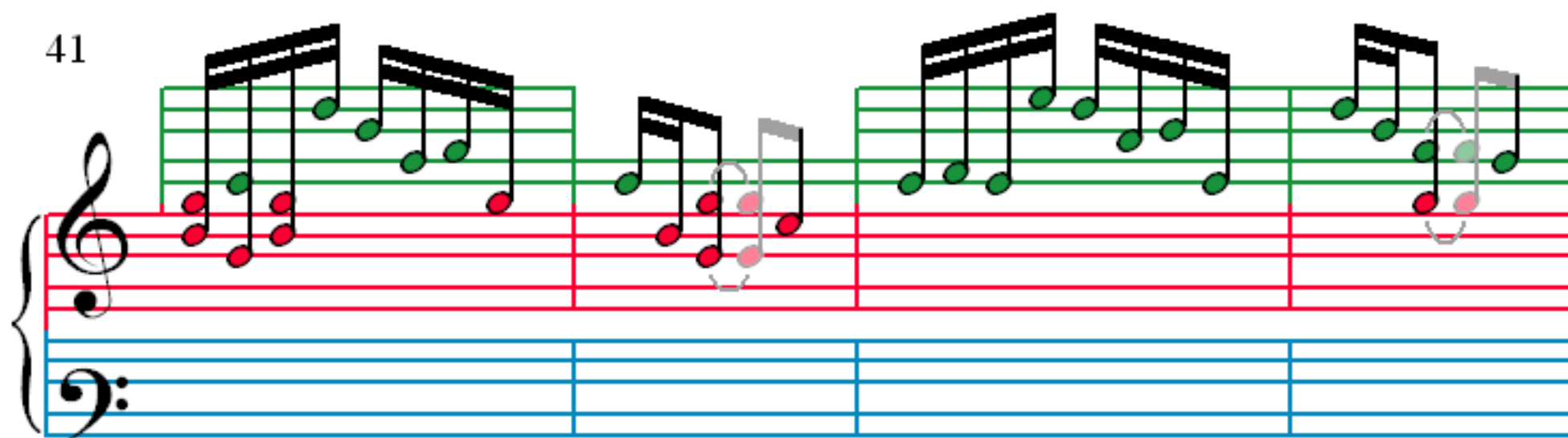
19

22

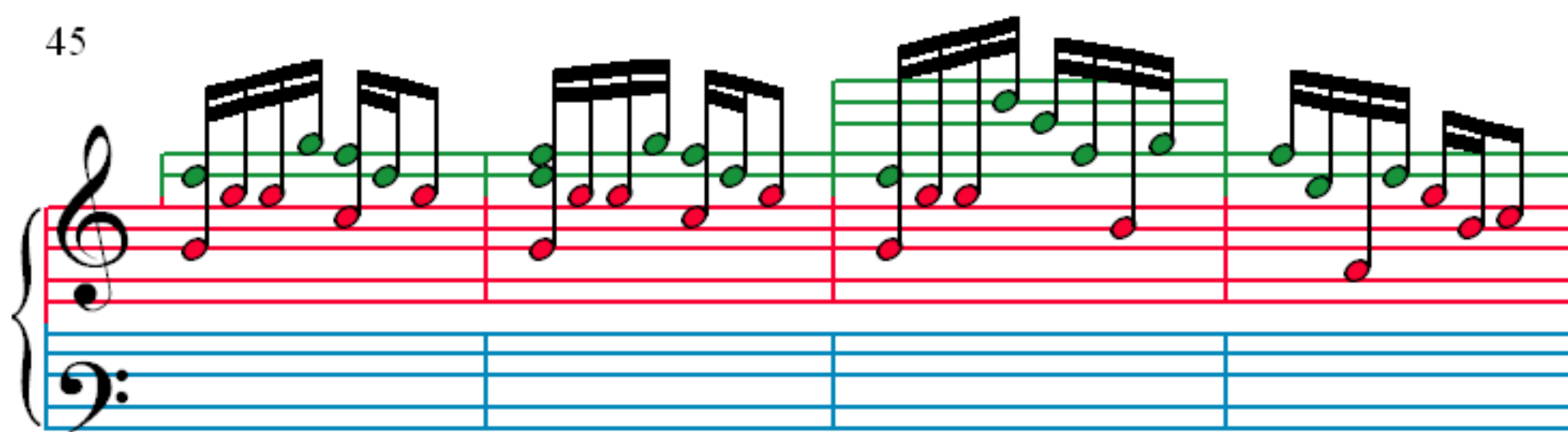
37



41



45



49

