

# El Capitan

J. P. Sousa (1854–1932)

1

3

6

9

The image displays the first eight measures of the piano introduction to the march 'El Capitan' by John Philip Sousa. The music is written for piano in 2/4 time, with a key signature of one flat (B-flat major or D minor). The notation is presented in four systems, each containing a grand staff (treble and bass clefs). The notes are color-coded: green for the right hand (treble clef), blue for the left hand (bass clef), and orange for the bass line (bottom staff). The first system (measures 1-2) features a treble melody with eighth and quarter notes and a bass line with quarter notes. The second system (measures 3-4) continues the melody and bass line. The third system (measures 5-6) shows a change in the treble melody, with the bass line continuing. The fourth system (measures 7-8) concludes the first phrase with a final treble melody and a bass line ending on a half note.

12

15

18

21

24

Measures 24-26 of the piece. Measure 24 features a treble staff with a green line and a bass staff with a blue line. Measure 25 features a treble staff with a red line and a bass staff with a blue line. Measure 26 features a treble staff with a green line and a bass staff with a blue line. The notation includes various note values and rests.

27

Measures 27-29 of the piece. Measure 27 features a treble staff with a green line and a bass staff with a blue line. Measure 28 features a treble staff with a red line and a bass staff with a blue line. Measure 29 features a treble staff with a green line and a bass staff with a blue line. The notation includes various note values and rests.

30

Measures 30-32 of the piece. Measure 30 features a treble staff with a purple line and a bass staff with a blue line. Measure 31 features a treble staff with a green line and a bass staff with a blue line. Measure 32 features a treble staff with a green line and a bass staff with a blue line. The notation includes various note values and rests.

33

Measures 33-35 of the piece. Measure 33 features a treble staff with a green line and a bass staff with a blue line. Measure 34 features a treble staff with a green line and a bass staff with a blue line. Measure 35 features a treble staff with a green line and a bass staff with a blue line. The notation includes various note values and rests.

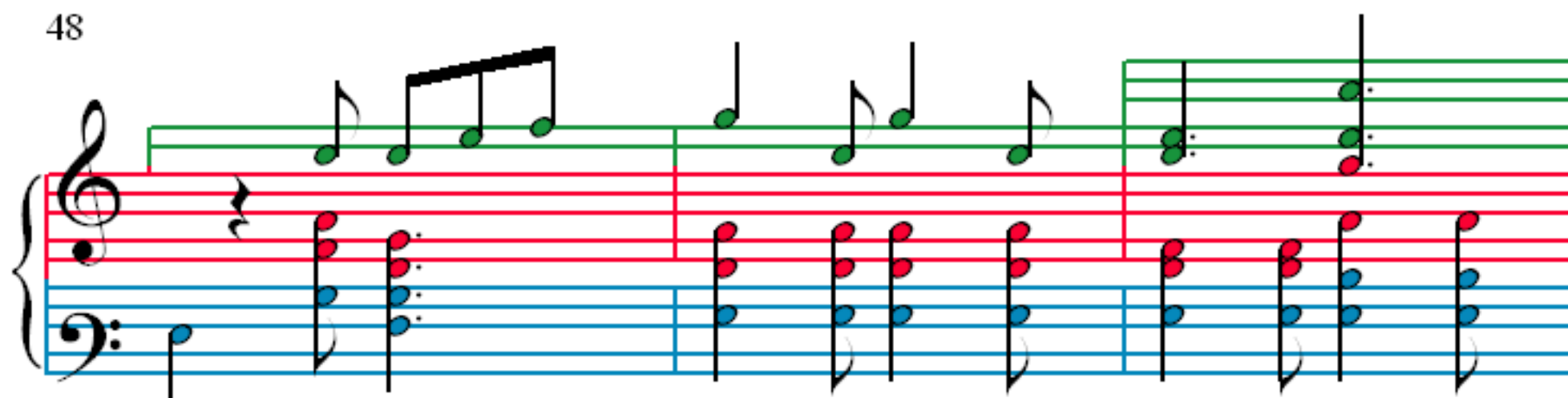
36

39

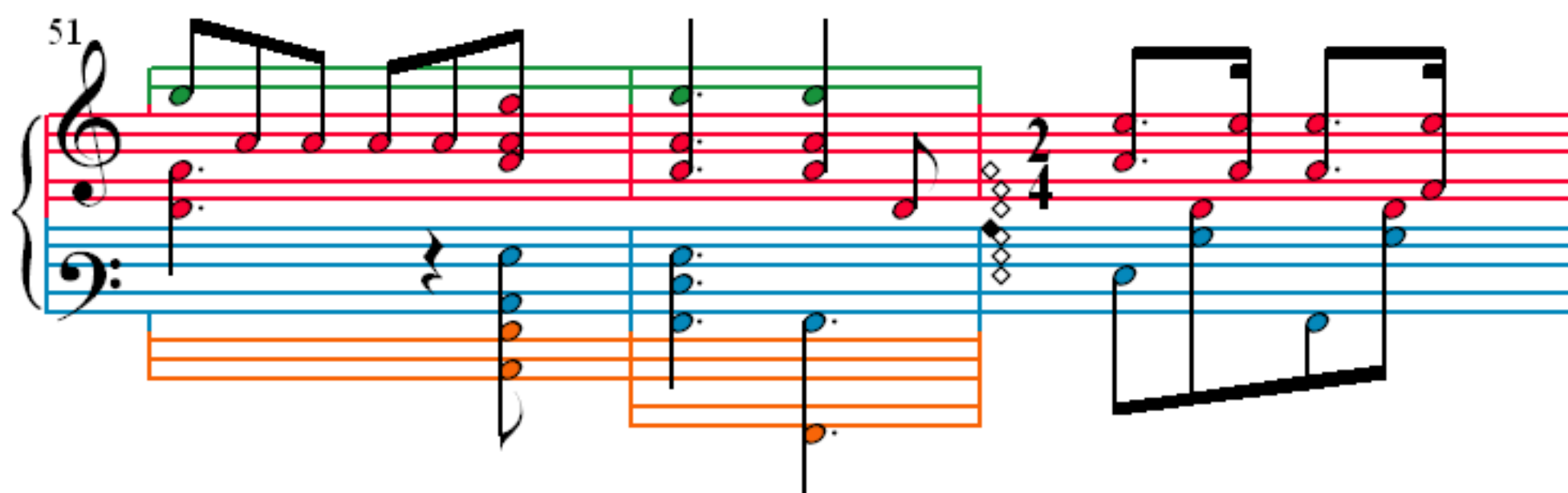
42

45

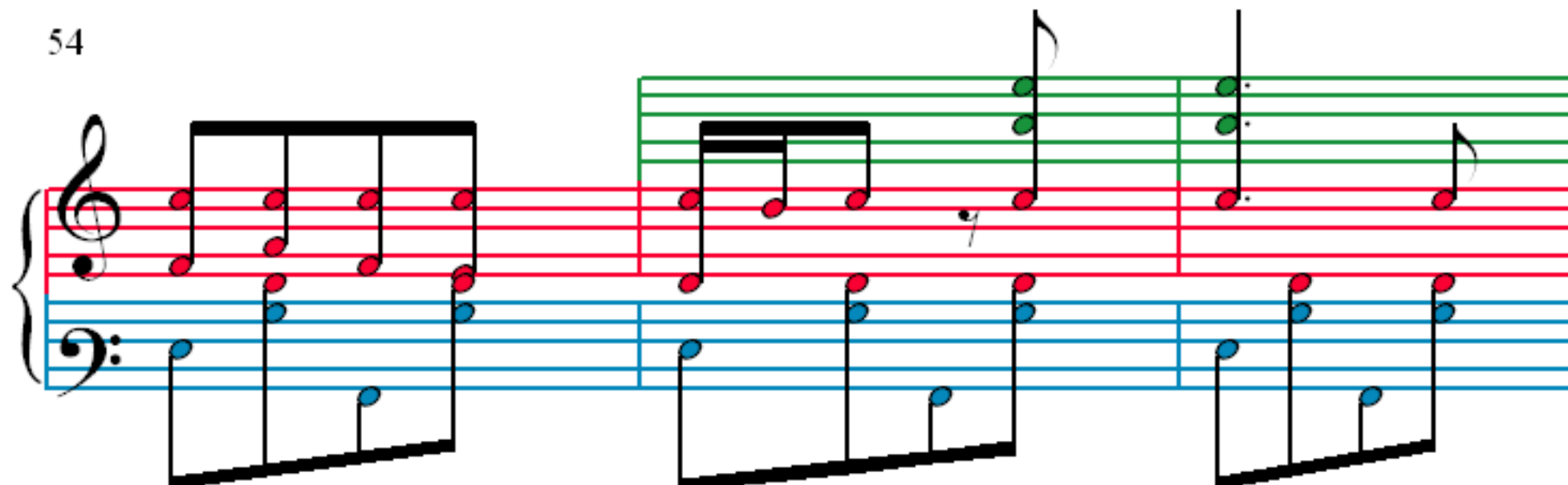
48



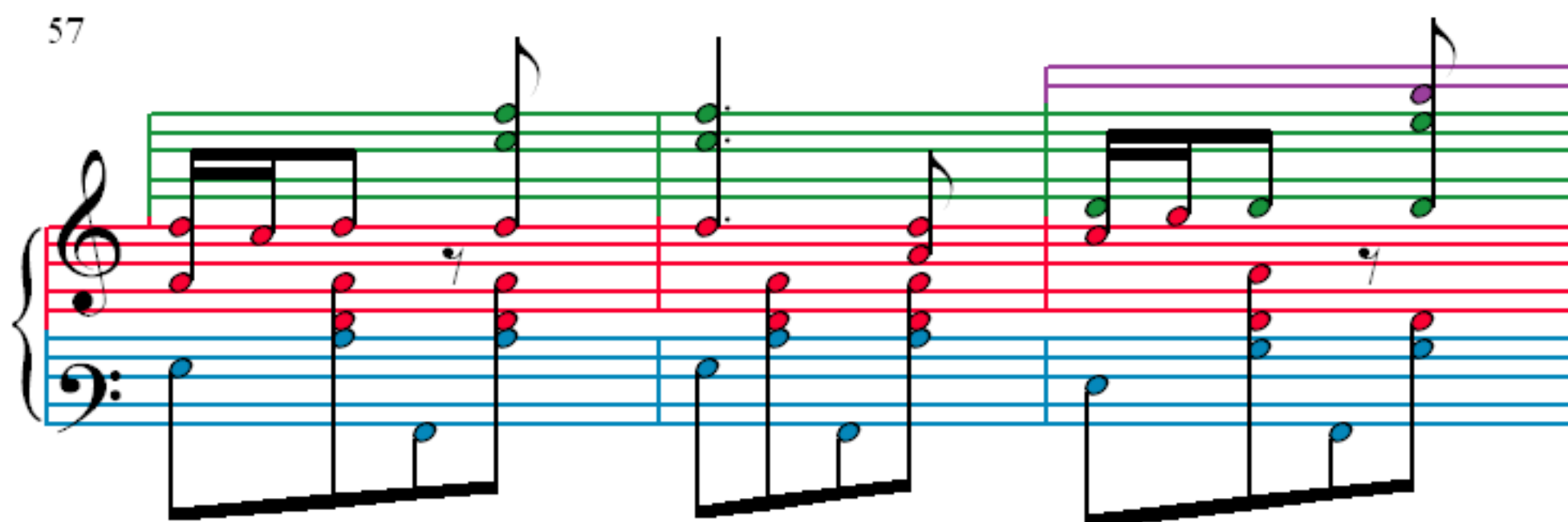
51



54



57



60

63

66

69

72

75

78

81

84

87

91

Measures 96-98 of the piece. The notation is for a piano accompaniment in treble and bass clefs. The treble staff has a green background, and the bass staff has a blue background. The notes are colored: red for the right hand and blue for the left hand. Measure 96 shows a sequence of eighth notes in the right hand and quarter notes in the left hand. Measure 97 continues this pattern. Measure 98 features a half note in the right hand and a quarter note in the left hand.

Measures 99-101 of the piece. The notation is for a piano accompaniment in treble and bass clefs. The treble staff has a green background, and the bass staff has a blue background. The notes are colored: red for the right hand and blue for the left hand. Measure 99 shows a sequence of eighth notes in the right hand and quarter notes in the left hand. Measure 100 continues this pattern. Measure 101 features a half note in the right hand and a quarter note in the left hand.

Measures 102-104 of the piece. The notation is for a piano accompaniment in treble and bass clefs. The treble staff has a green background, and the bass staff has a blue background. The notes are colored: red for the right hand and blue for the left hand. Measure 102 shows a sequence of eighth notes in the right hand and quarter notes in the left hand. Measure 103 continues this pattern. Measure 104 features a half note in the right hand and a quarter note in the left hand.

Measures 105-107 of the piece. The notation is for a piano accompaniment in treble and bass clefs. The treble staff has a green background, and the bass staff has a blue background. The notes are colored: red for the right hand and blue for the left hand. Measure 105 shows a sequence of eighth notes in the right hand and quarter notes in the left hand. Measure 106 continues this pattern. Measure 107 features a half note in the right hand and a quarter note in the left hand.

108

113

118