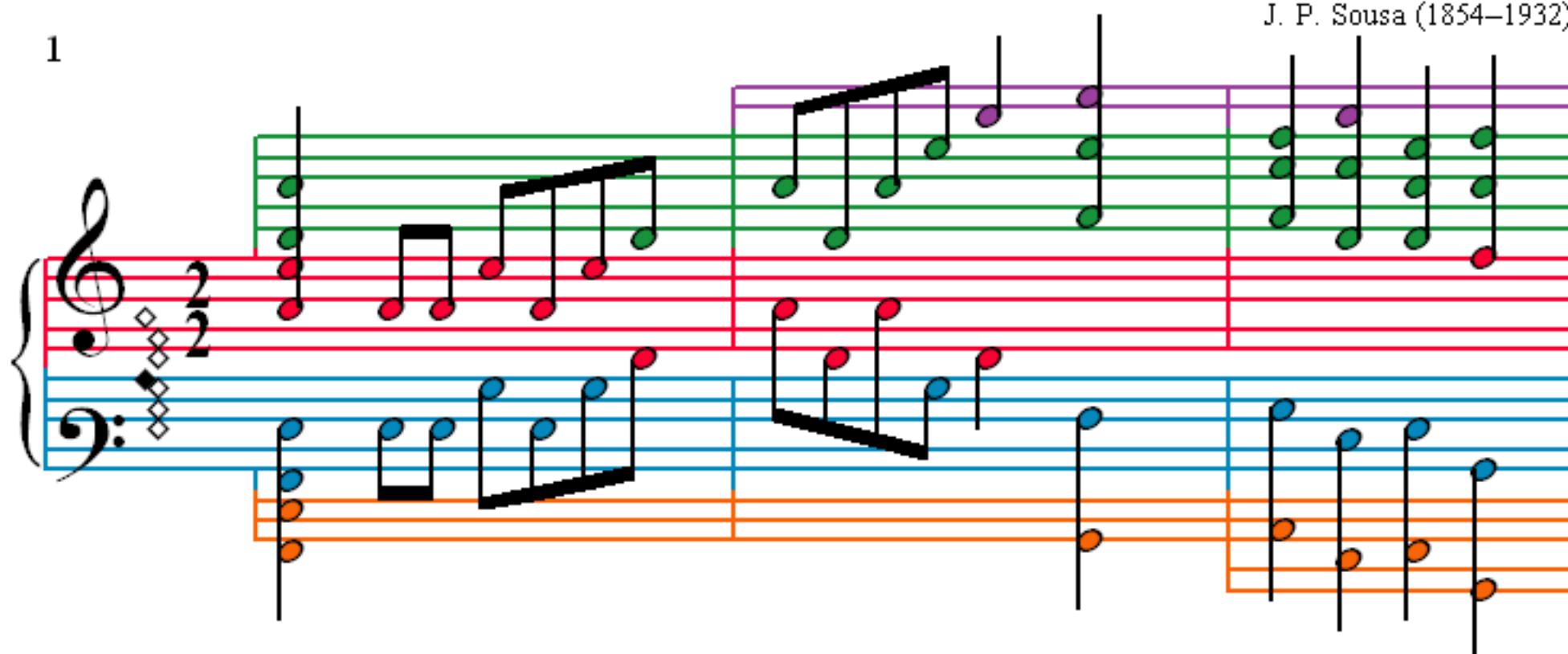


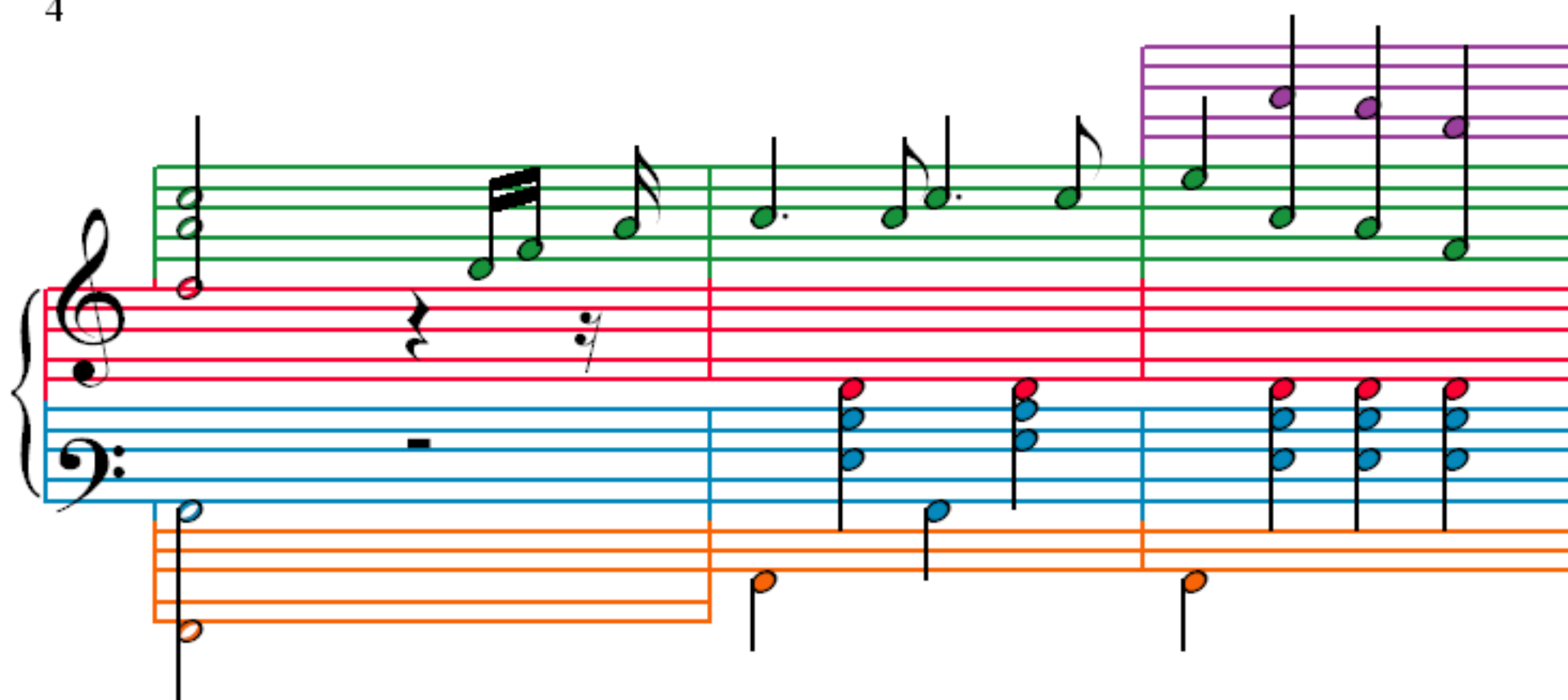
Hail to the Spirit of Liberty

J. P. Sousa (1854–1932)

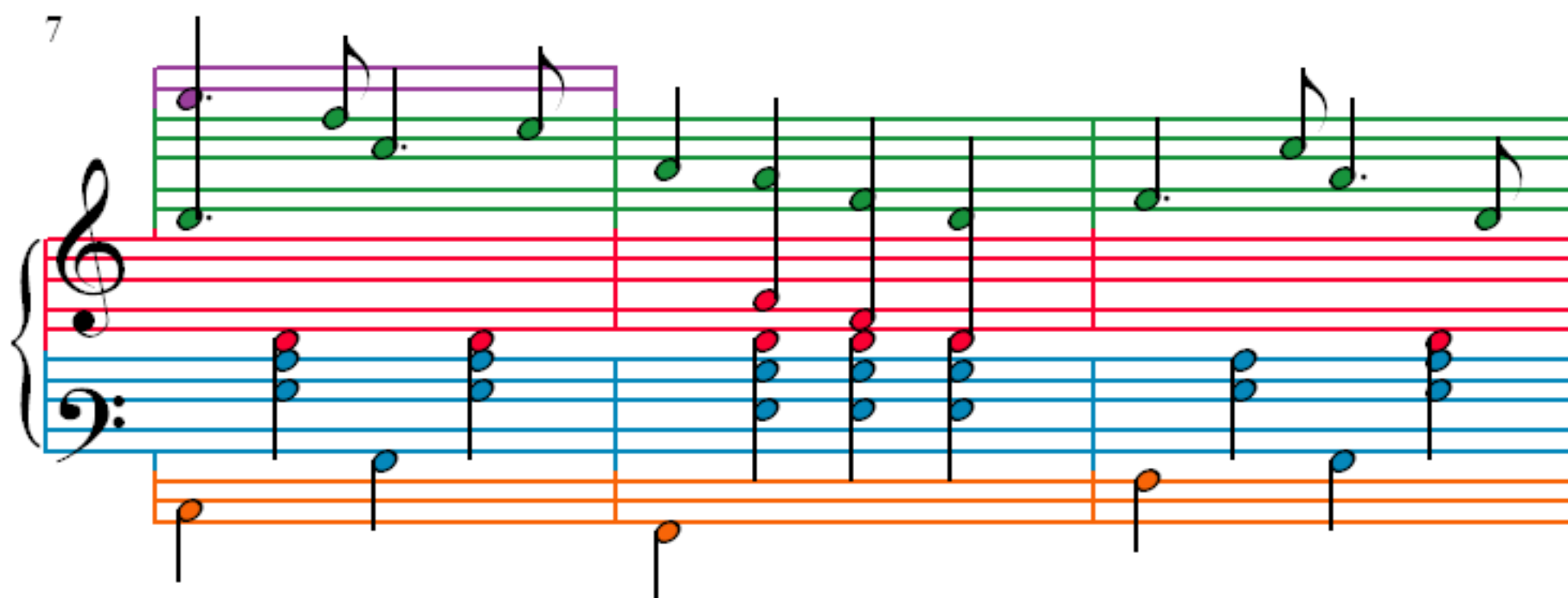
1



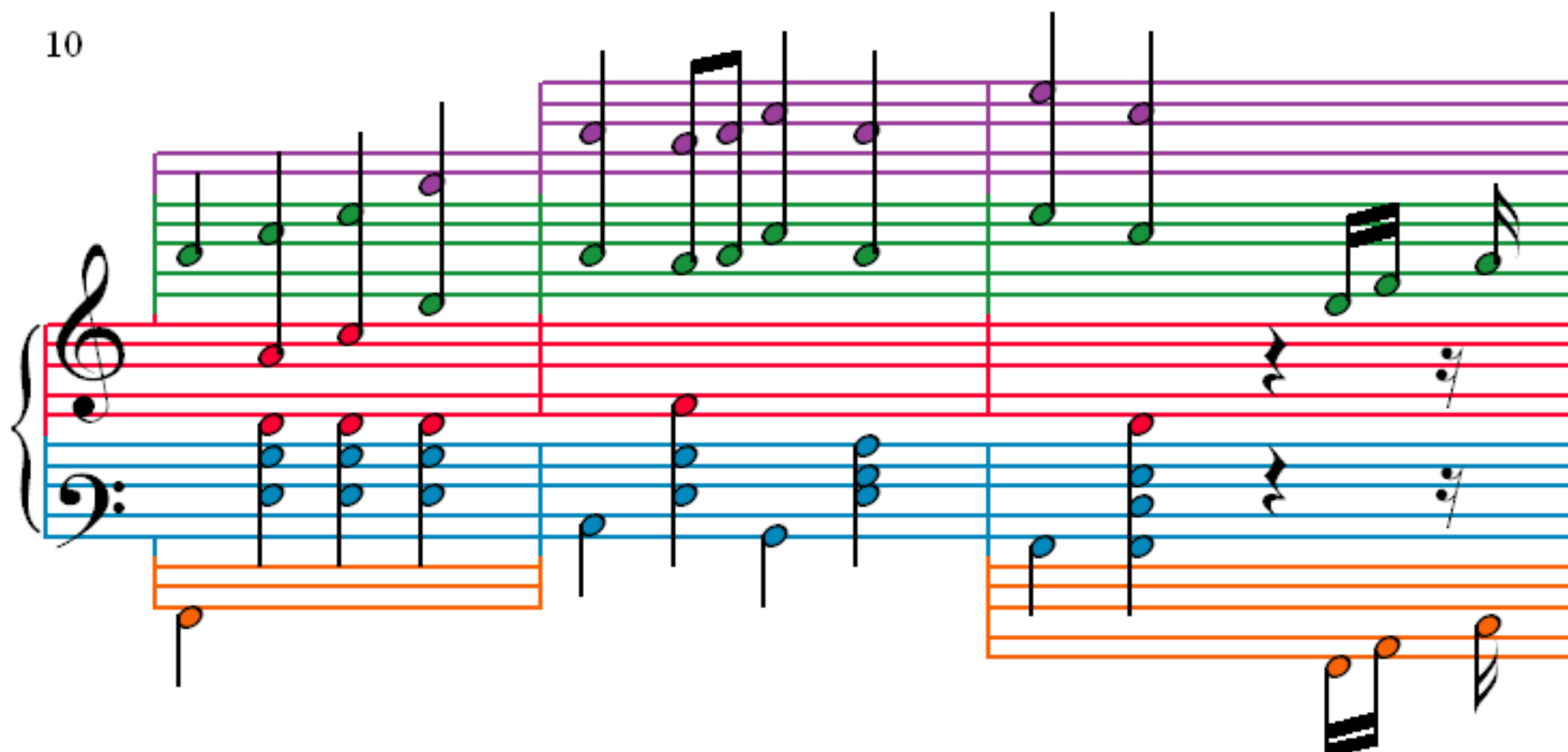
4



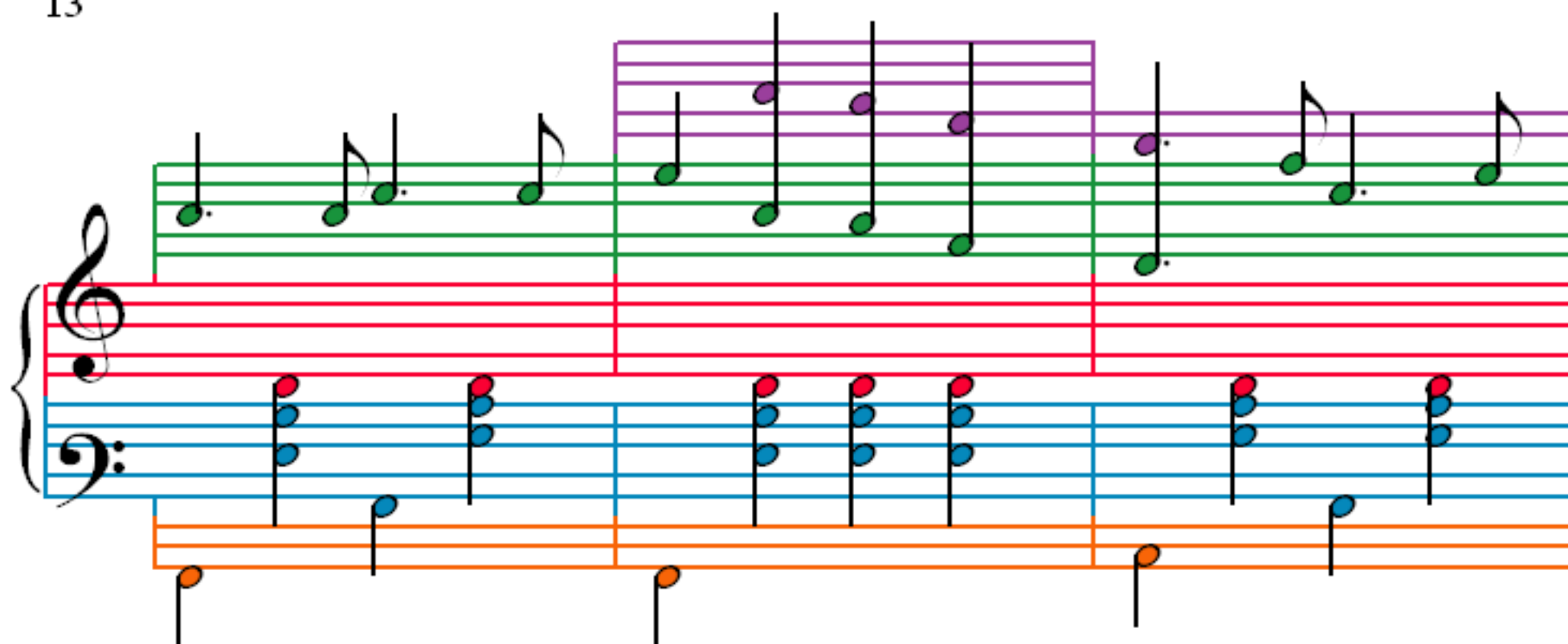
7



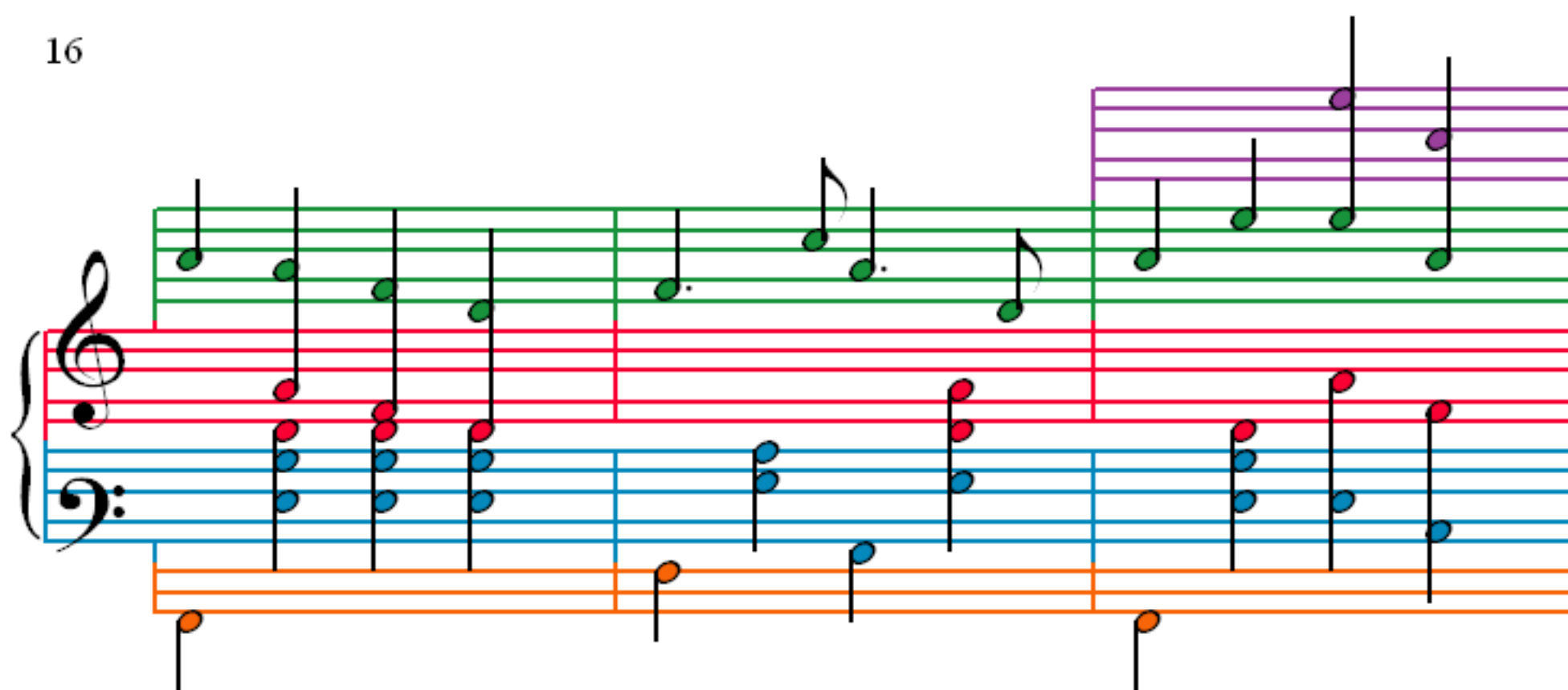
10



13



16



19

23

27

31

Measures 31-34 of the piece. The notation is for a piano accompaniment. The right hand (treble clef) features a melody with eighth and sixteenth notes, some of which are highlighted in green. The left hand (bass clef) provides a harmonic foundation with chords and single notes, some of which are highlighted in blue and orange. The measures are grouped by vertical bar lines.

35

Measures 35-38 of the piece. The notation continues the piano accompaniment. The right hand (treble clef) features a melody with eighth and sixteenth notes, some of which are highlighted in green. The left hand (bass clef) provides a harmonic foundation with chords and single notes, some of which are highlighted in blue and orange. The measures are grouped by vertical bar lines.

39

Measures 39-42 of the piece. The notation continues the piano accompaniment. The right hand (treble clef) features a melody with eighth and sixteenth notes, some of which are highlighted in green. The left hand (bass clef) provides a harmonic foundation with chords and single notes, some of which are highlighted in blue and orange. The measures are grouped by vertical bar lines.

43

Measures 43-46 of the piece. The notation continues the piano accompaniment. The right hand (treble clef) features a melody with eighth and sixteenth notes, some of which are highlighted in green. The left hand (bass clef) provides a harmonic foundation with chords and single notes, some of which are highlighted in blue and orange. The measures are grouped by vertical bar lines.

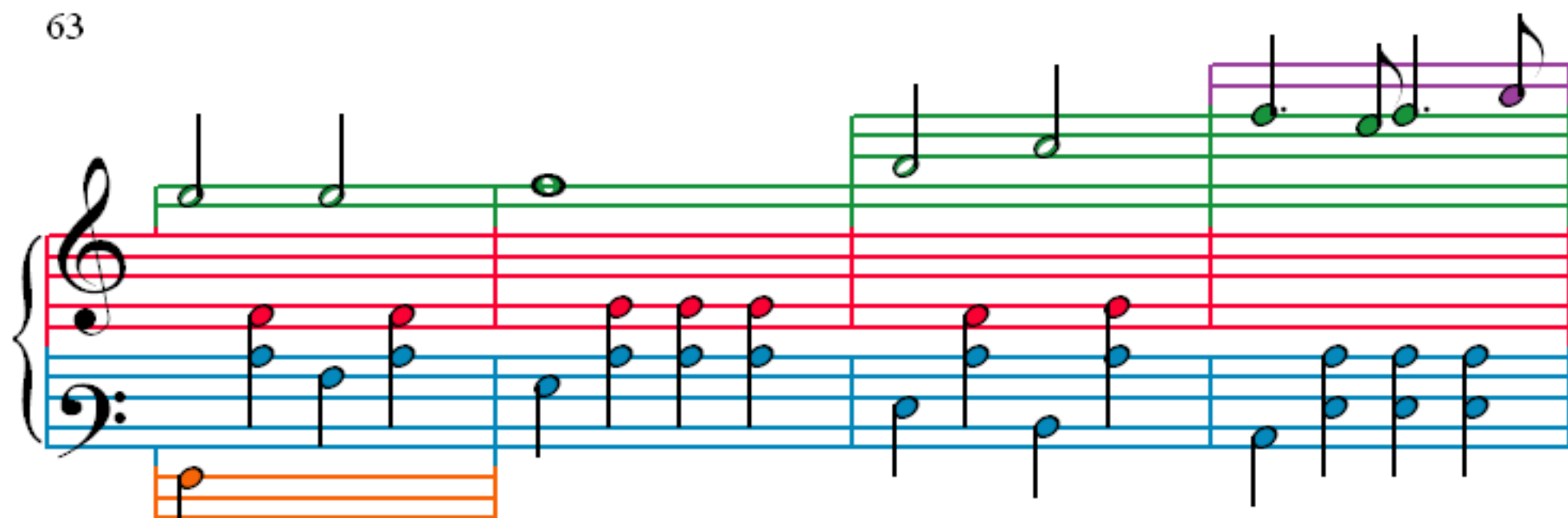
47

51

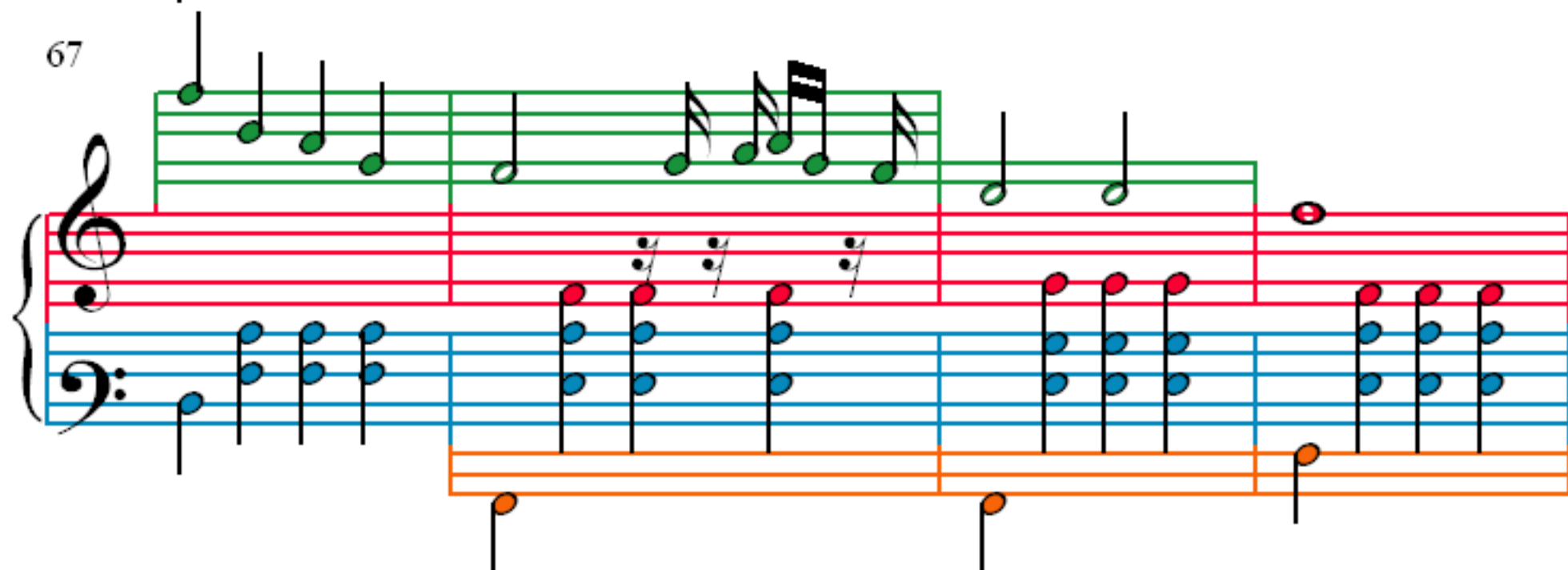
55

59

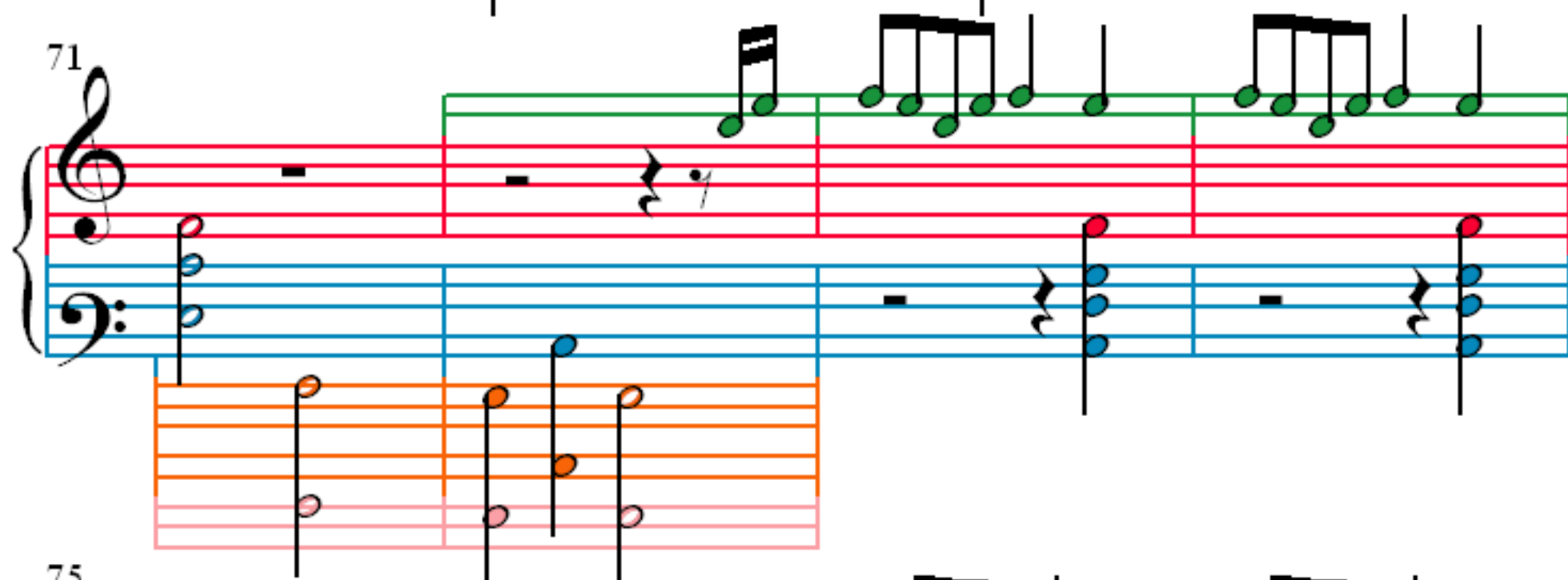
63



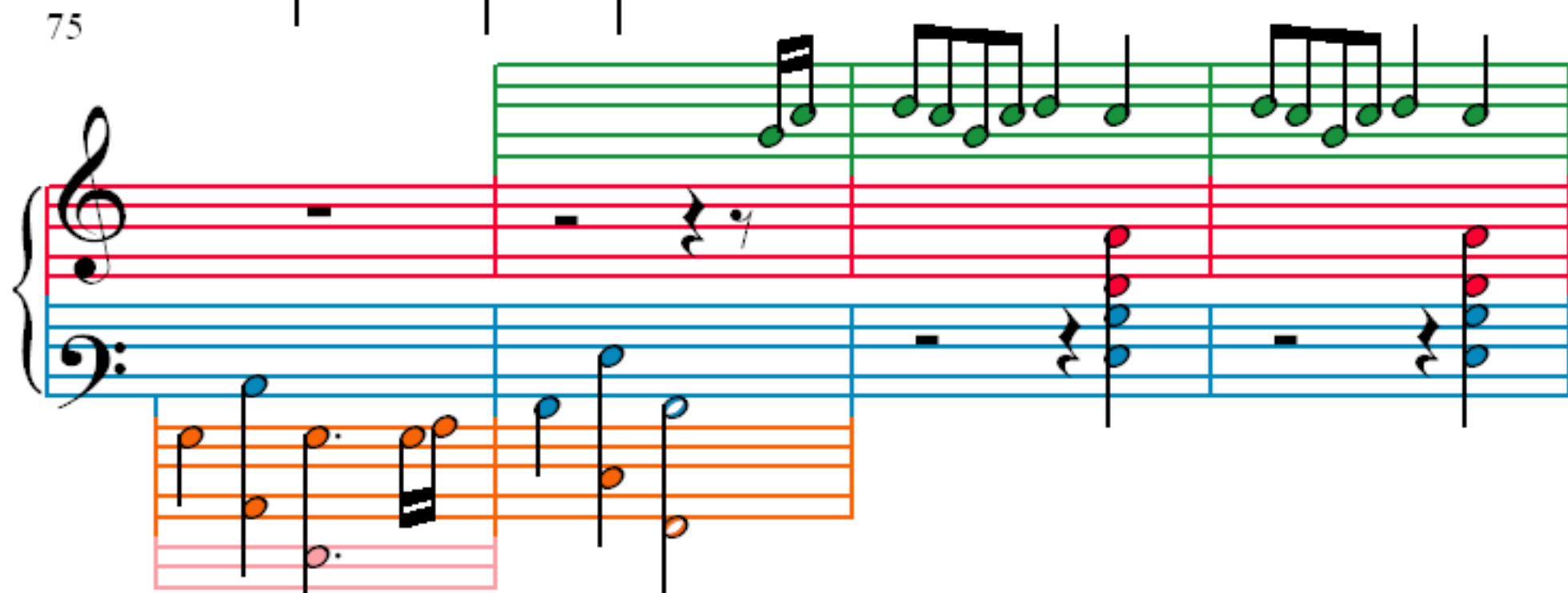
67



71



75



79

Measures 79-82 of the musical score. The notation is presented in three systems, each with a grand staff (treble and bass clefs) and a separate staff below. The notes are color-coded: green for the treble staff, blue for the bass staff, and orange for the lower staff. Measure 79 features a treble staff with a half note G4, a bass staff with a half note F3, and a lower staff with a half note E2. Measure 80 features a treble staff with a half note A4, a bass staff with a half note G3, and a lower staff with a half note F2. Measure 81 features a treble staff with a half note B4, a bass staff with a half note A3, and a lower staff with a half note G2. Measure 82 features a treble staff with a half note C5, a bass staff with a half note B3, and a lower staff with a half note A2.

83

Measures 83-86 of the musical score. The notation is presented in three systems, each with a grand staff (treble and bass clefs) and a separate staff below. The notes are color-coded: green for the treble staff, blue for the bass staff, and orange for the lower staff. Measure 83 features a treble staff with a half note D5, a bass staff with a half note C4, and a lower staff with a half note B1. Measure 84 features a treble staff with a half note E5, a bass staff with a half note D4, and a lower staff with a half note C2. Measure 85 features a treble staff with a half note F5, a bass staff with a half note E4, and a lower staff with a half note D2. Measure 86 features a treble staff with a half note G5, a bass staff with a half note F4, and a lower staff with a half note E2.

87

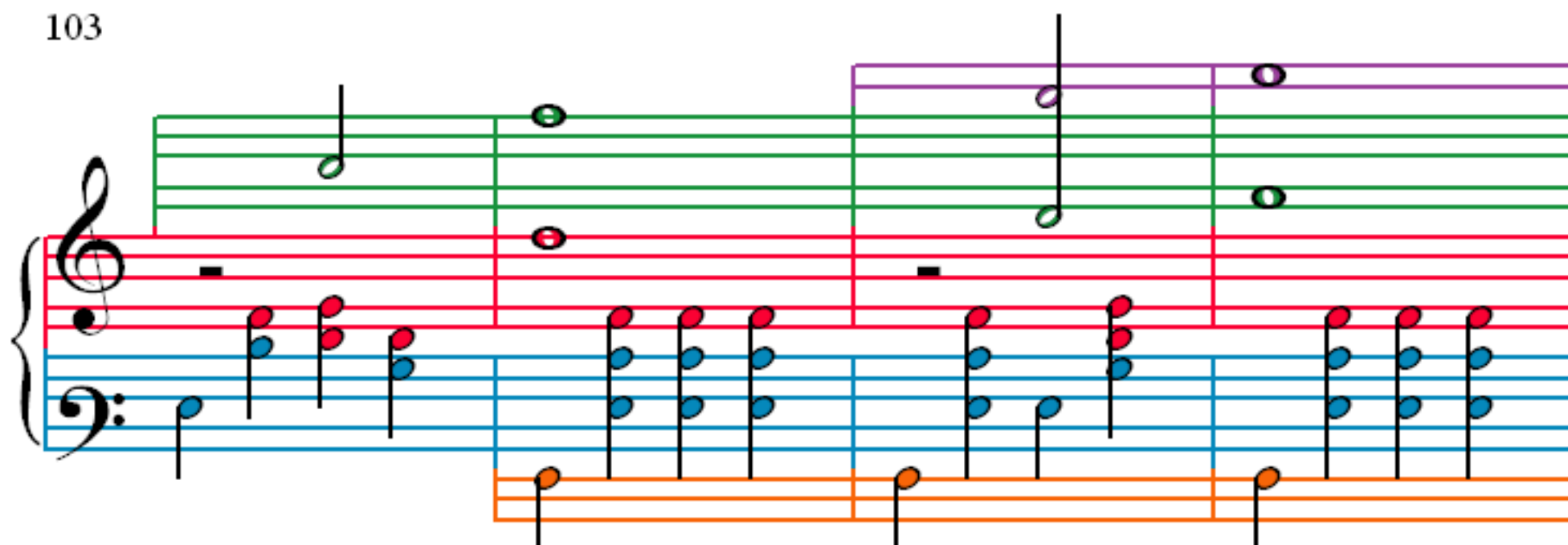
Measures 87-90 of the musical score. The notation is presented in three systems, each with a grand staff (treble and bass clefs) and a separate staff below. The notes are color-coded: green for the treble staff, blue for the bass staff, and orange for the lower staff. Measure 87 features a treble staff with a half note A5, a bass staff with a half note G4, and a lower staff with a half note F2. Measure 88 features a treble staff with a half note B5, a bass staff with a half note A4, and a lower staff with a half note G2. Measure 89 features a treble staff with a half note C6, a bass staff with a half note B4, and a lower staff with a half note A2. Measure 90 features a treble staff with a half note D6, a bass staff with a half note C4, and a lower staff with a half note B1.

91

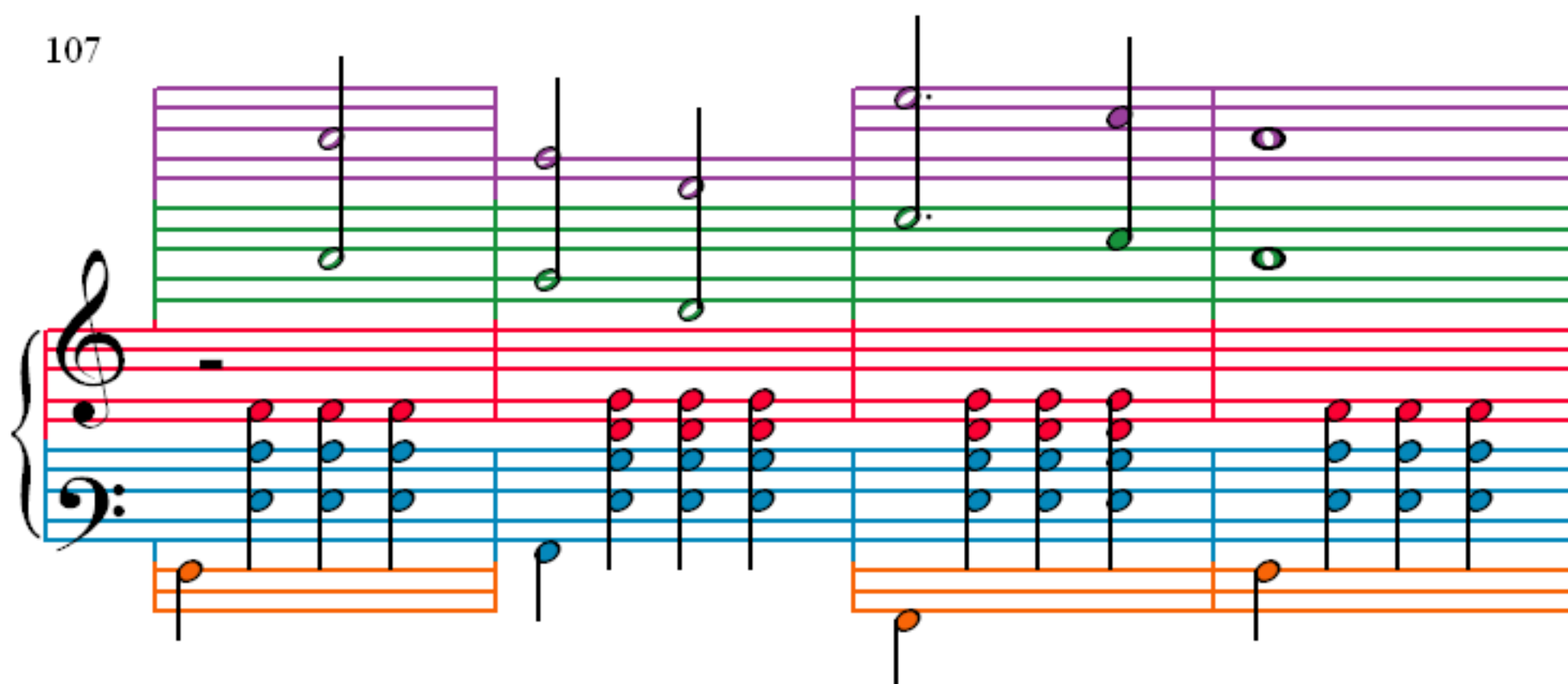
95

99

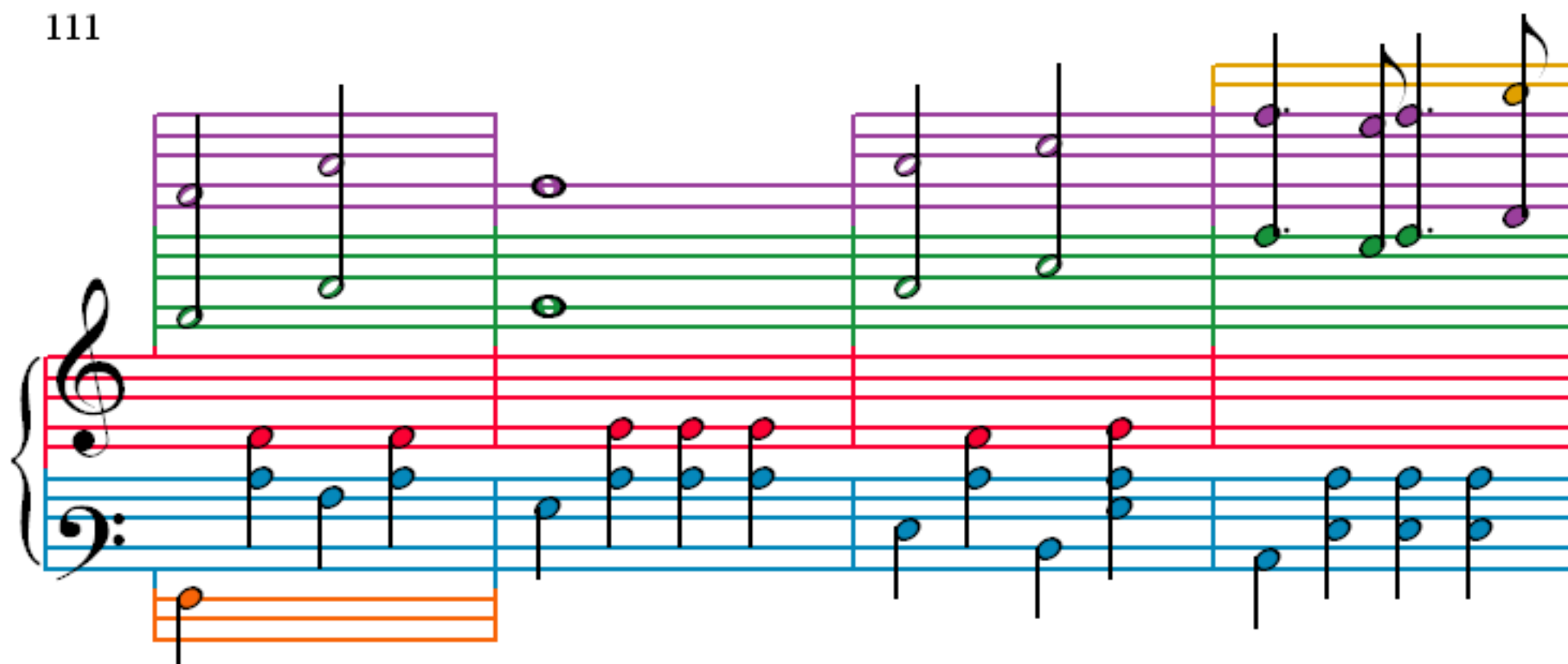
103



107



111



115

117

120